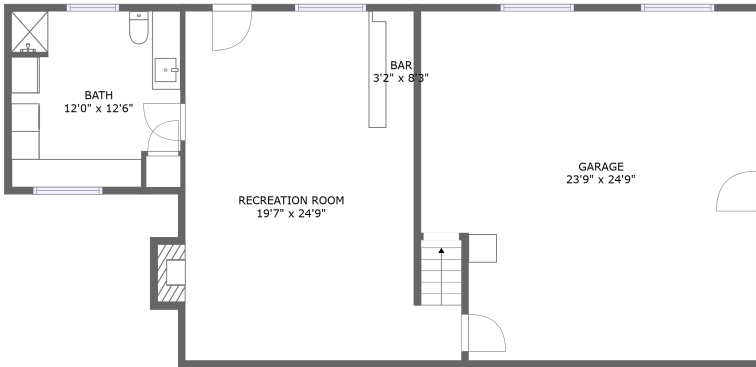
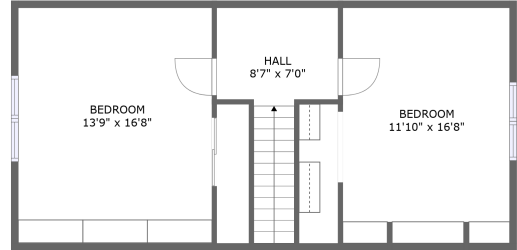
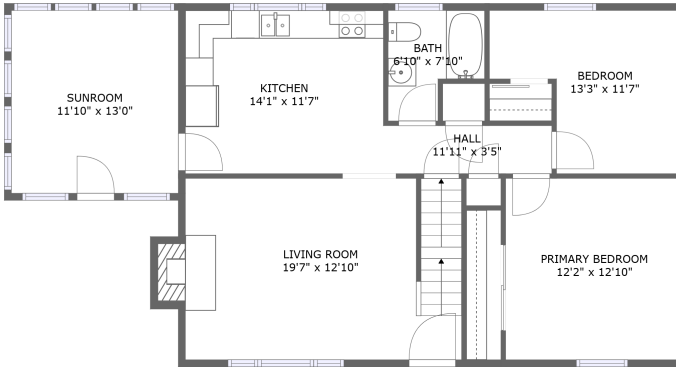


29 Mechanic Street, Upton, Worcester County, Massachusetts, United States, 01568




Property Summary


 **1** garages

 **4** bedrooms

 **2** bathrooms

 **0** half baths

 **3** floors

 **2,201** Gross Living Area sqft

 **2,987** total sqft

29 Mechanic Street, Upton, Worcester County, Massachusetts, United States, 01568



Room Dimensions

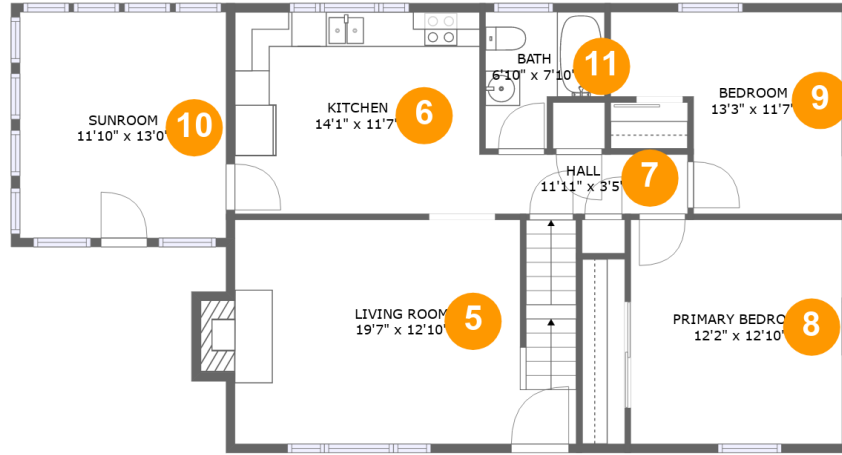
Floor 1

Total sqft: 1246

Living area: 642

#	Room name	Dimensions	Area (sqft)	Counted as Living Area
1	Recreation Room	19'7" x 24'9"	412 sq. ft	Yes
2	Garage	23'9" x 24'9"	559 sq. ft	No
3	Bath	12'0" x 12'6"	142 sq. ft	Yes
4	Bar	3'2" x 8'3"	26 sq. ft	Yes

29 Mechanic Street, Upton, Worcester County, Massachusetts, United States, 01568



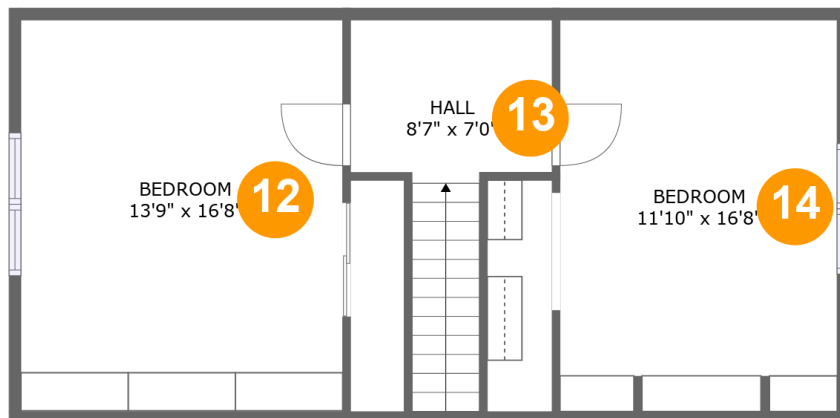
Room Dimensions

Floor 2

Total sqft: 1106

Living area: 1096

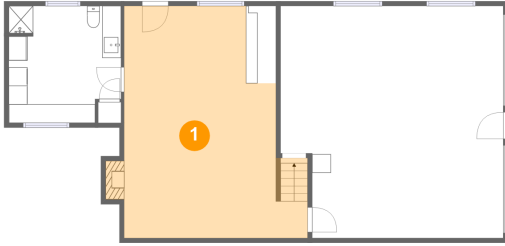
#	Room name	Dimensions	Area (sqft)	Counted as Living Area
5	Living Room	19'7" x 12'10"	258 sq. ft	Yes
6	Kitchen	14'1" x 11'7"	163 sq. ft	Yes
7	Hall	11'11" x 3'5"	41 sq. ft	Yes
8	Primary Bedroom	12'2" x 12'10"	156 sq. ft	Yes
9	Bedroom	13'3" x 11'7"	122 sq. ft	Yes
10	Sunroom	11'10" x 13'0"	153 sq. ft	Yes
11	Bath	6'10" x 7'10"	44 sq. ft	Yes

**29 Mechanic Street, Upton, Worcester County,
Massachusetts, United States, 01568****Room Dimensions****Floor 3****Total sqft: 635****Living area: 463**

#	Room name	Dimensions	Area (sqft)	Counted as Living Area
12	Bedroom	13'9" x 16'8"	174 sq. ft	Yes
13	Hall	8'7" x 7'0"	69 sq. ft	Yes
14	Bedroom	11'10" x 16'8"	150 sq. ft	Yes

29 Mechanic Street, Upton, Worcester County, Massachusetts, United States, 01568

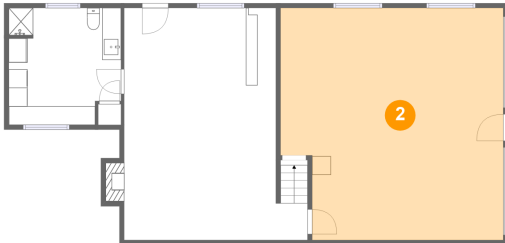
1 Floor 1 - Recreation Room



Dimensions: 19'7" x 24'9"
Area: 412 sq. ft
Counted as Living Area:
Yes

Heated: Yes
Finished: Yes
Enclosed: Yes
Contiguous:
Yes
Permitted: Yes
Wet Space: No
Addition: No
Conversion: No

2 Floor 1 - Garage

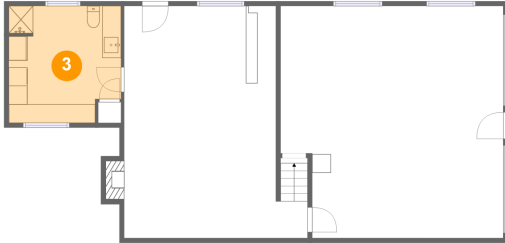


Dimensions: 23'9" x 24'9"
Area: 559 sq. ft
Counted as Living Area: No

Heated: No
Finished: No
Enclosed: Yes
Contiguous: Yes
Permitted: Yes
Wet Space: No
Addition: No
Conversion: No

29 Mechanic Street, Upton, Worcester County, Massachusetts, United States, 01568

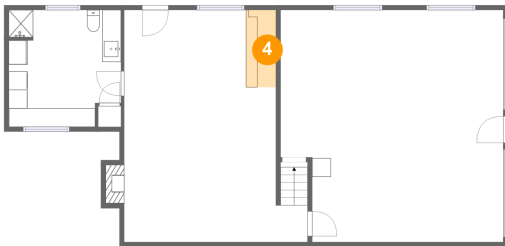
3 Floor 1 - Bath



Dimensions: 12'0" x 12'6"
Area: 142 sq. ft
Counted as Living Area:
Yes

Heated: Yes
Finished: Yes
Enclosed: Yes
Contiguous:
Yes
Permitted: Yes
Wet Space: Yes
Addition: No
Conversion: No

4 Floor 1 - Bar



Dimensions: 3'2" x 8'3"
Area: 26 sq. ft
Counted as Living Area:
Yes

Heated: Yes
Finished: Yes
Enclosed: Yes
Contiguous:
Yes
Permitted: Yes
Wet Space: No
Addition: No
Conversion: No

5 Floor 2 - Living Room



Dimensions: 19'7" x 12'10"
Area: 258 sq. ft
Counted as Living Area:
Yes

Heated: Yes
Finished: Yes
Enclosed: Yes
Contiguous:
Yes
Permitted: Yes
Wet Space: No
Addition: No
Conversion: No

29 Mechanic Street, Upton, Worcester County, Massachusetts, United States, 01568

6 Floor 2 - Kitchen



Dimensions: 14'1" x 11'7"
Area: 163 sq. ft
Counted as Living Area:
Yes

Heated: Yes
Finished: Yes
Enclosed: Yes
Contiguous:
Yes
Permitted: Yes
Wet Space: No
Addition: No
Conversion: No

7 Floor 2 - Hall



Dimensions: 11'11" x 3'5"
Area: 41 sq. ft
Counted as Living Area:
Yes

Heated: Yes
Finished: Yes
Enclosed: Yes
Contiguous:
Yes
Permitted: Yes
Wet Space: No
Addition: No
Conversion: No

8 Floor 2 - Primary Bedroom



Dimensions: 12'2" x 12'10"
Area: 156 sq. ft
Counted as Living Area:
Yes

Heated: Yes
Finished: Yes
Enclosed: Yes
Contiguous:
Yes
Permitted: Yes
Wet Space: No
Addition: No
Conversion: No

**29 Mechanic Street, Upton, Worcester County,
Massachusetts, United States, 01568****9 Floor 2 - Bedroom**

Dimensions: 13'3" x 11'7"
Area: 122 sq. ft
Counted as Living Area:
Yes

Heated: Yes
Finished: Yes
Enclosed: Yes
Contiguous:
Yes
Permitted: Yes
Wet Space: No
Addition: No
Conversion: No

10 Floor 2 - Sunroom

Dimensions: 11'10" x 13'0"
Area: 153 sq. ft
Counted as Living Area:
Yes

Heated: Yes
Finished: Yes
Enclosed: Yes
Contiguous:
Yes
Permitted: Yes
Wet Space: No
Addition: No
Conversion: No

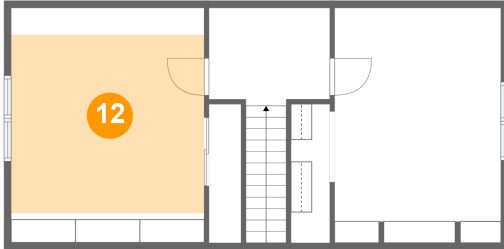
11 Floor 2 - Bath

Dimensions: 6'10" x 7'10"
Area: 44 sq. ft
Counted as Living Area:
Yes

Heated: Yes
Finished: Yes
Enclosed: Yes
Contiguous:
Yes
Permitted: Yes
Wet Space: Yes
Addition: No
Conversion: No

29 Mechanic Street, Upton, Worcester County, Massachusetts, United States, 01568

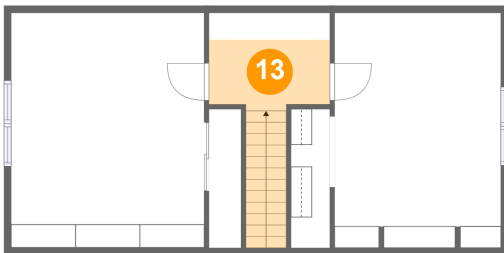
12 Floor 3 - Bedroom



Dimensions: 13'9" x 16'8"
Area: 174 sq. ft
Counted as Living Area:
Yes

Heated: Yes
Finished: Yes
Enclosed: Yes
Contiguous:
Yes
Permitted: Yes
Wet Space: No
Addition: No
Conversion: No

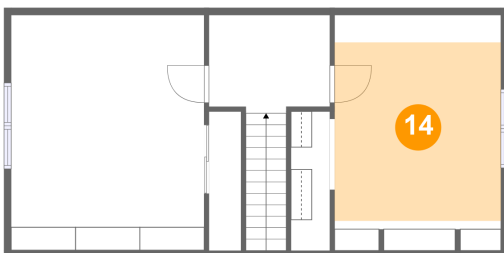
13 Floor 3 - Hall



Dimensions: 8'7" x 7'0"
Area: 69 sq. ft
Counted as Living Area:
Yes

Heated: Yes
Finished: Yes
Enclosed: Yes
Contiguous:
Yes
Permitted: Yes
Wet Space: No
Addition: No
Conversion: No

14 Floor 3 - Bedroom



Dimensions: 11'10" x 16'8"
Area: 150 sq. ft
Counted as Living Area:
Yes

Heated: Yes
Finished: Yes
Enclosed: Yes
Contiguous:
Yes
Permitted: Yes
Wet Space: No
Addition: No
Conversion: No