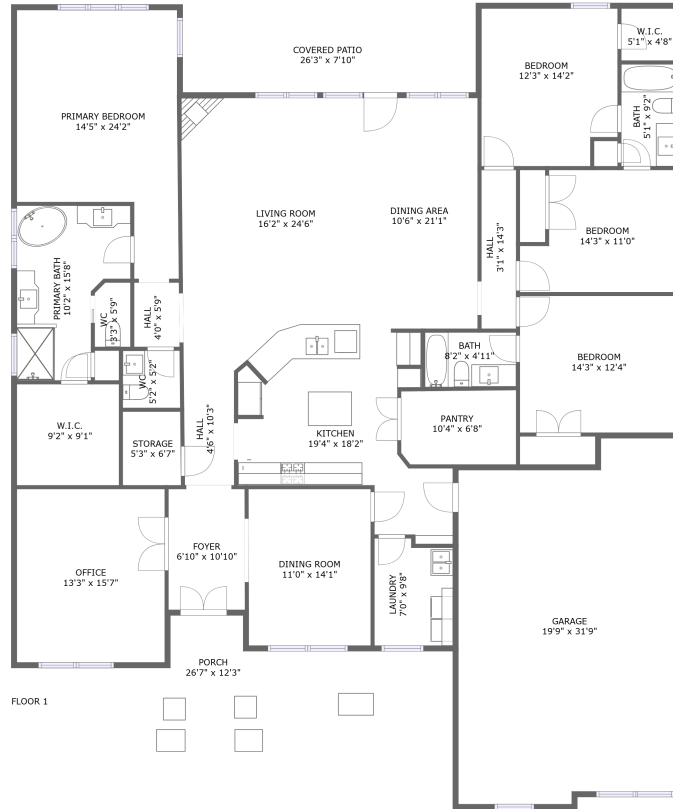



# 417 Sage Creek Boulevard Southwest, Huntsville, Madison County, Alabama, United States, 35824



## Property summary

 **1** Garages

 **4** Bedrooms

 **3** Bathrooms

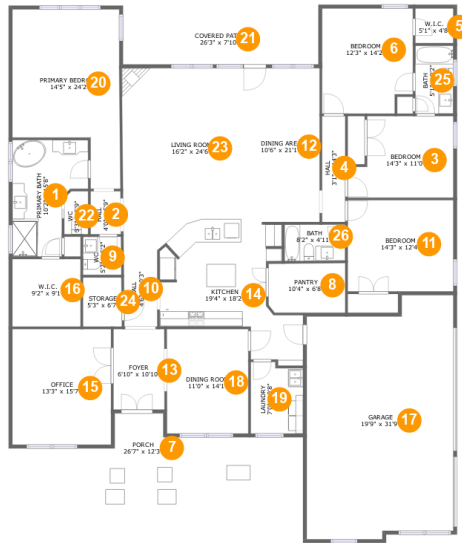
 **1** Half baths

 **1** Floors

 **3,051** Gross living area sqft

 **4,003** Total sqft

# 417 Sage Creek Boulevard Southwest, Huntsville, Madison County, Alabama, United States, 35824



## Room dimensions

Floor 1

Total sqft: 4003 Living area: 3051

#		Dimensions	sqft	Counted as living area
1	Primary Bath	10'2" x 15'8"	129 sq. ft	Yes
2	Hall	4'0" x 5'9"	23 sq. ft	Yes
3	Bedroom	14'3" x 11'0"	138 sq. ft	Yes
4	Hall	3'1" x 14'3"	45 sq. ft	Yes
5	W.I.C.	5'1" x 4'8"	24 sq. ft	Yes
6	Bedroom	12'3" x 14'2"	167 sq. ft	Yes
7	Porch	26'7" x 12'3"	205 sq. ft	No
8	Pantry	10'4" x 6'8"	68 sq. ft	Yes
9	WC	5'2" x 5'2"	26 sq. ft	Yes
10	Hall	4'6" x 10'3"	46 sq. ft	Yes
11	Bedroom	14'3" x 12'4"	175 sq. ft	Yes

**417 Sage Creek Boulevard Southwest, Huntsville,  
Madison County, Alabama, United States, 35824**

#		Dimensions	sqft	Counted as living area
12	Dining Area	10'6" x 21'1"	218 sq. ft	Yes
13	Foyer	6'10" x 10'10"	75 sq. ft	Yes
14	Kitchen	19'4" x 18'2"	241 sq. ft	Yes
15	Office	13'3" x 15'7"	207 sq. ft	Yes
16	W.I.C.	9'2" x 9'1"	83 sq. ft	Yes
17	Garage	19'9" x 31'9"	602 sq. ft	No
18	Dining Room	11'0" x 14'1"	154 sq. ft	Yes
19	Laundry	7'0" x 9'8"	65 sq. ft	Yes
20	Primary Bedroom	14'5" x 24'2"	276 sq. ft	Yes
21	Covered Patio	26'3" x 7'10"	208 sq. ft	No
22	WC	3'3" x 5'9"	18 sq. ft	Yes
23	Living Room	16'2" x 24'6"	361 sq. ft	Yes
24	Storage	5'3" x 6'7"	35 sq. ft	No
25	Bath	5'1" x 9'2"	47 sq. ft	Yes
26	Bath	8'2" x 4'11"	40 sq. ft	Yes

# 417 Sage Creek Boulevard Southwest, Huntsville, Madison County, Alabama, United States, 35824

## 1 Floor 1 - Primary Bath



**Dimensions:** 10'2" x 15'8"  
**Area:** 129 sq. ft  
**Counted as living area:** Yes

**Heated:** Yes  
**Finished:** Yes  
**Enclosed:** Yes  
**Contiguous:** Yes  
**Permitted:** Yes  
**Wet space:** Yes  
**Addition:** No  
**Conversion:** No

## 2 Floor 1 - Hall



**Dimensions:** 4'0" x 5'9"  
**Area:** 23 sq. ft  
**Counted as living area:** Yes

**Heated:** Yes  
**Finished:** Yes  
**Enclosed:** Yes  
**Contiguous:** Yes  
**Permitted:** Yes  
**Wet space:** No  
**Addition:** No  
**Conversion:** No

# 417 Sage Creek Boulevard Southwest, Huntsville, Madison County, Alabama, United States, 35824

## 3 Floor 1 - Bedroom



Dimensions: 14'3" x 11'0"  
Area: 138 sq. ft  
Counted as living area: Yes

Heated: Yes  
Finished: Yes  
Enclosed: Yes  
Contiguous: Yes  
Permitted: Yes  
Wet space: No  
Addition: No  
Conversion: No

## 4 Floor 1 - Hall



Dimensions: 3'1" x 14'3"  
Area: 45 sq. ft  
Counted as living area: Yes

Heated: Yes  
Finished: Yes  
Enclosed: Yes  
Contiguous: Yes  
Permitted: Yes  
Wet space: No  
Addition: No  
Conversion: No

## 5 Floor 1 - W.I.C.



Dimensions: 5'1" x 4'8"  
Area: 24 sq. ft  
Counted as living area: Yes

Heated: Yes  
Finished: Yes  
Enclosed: Yes  
Contiguous: Yes  
Permitted: Yes  
Wet space: No  
Addition: No  
Conversion: No

# 417 Sage Creek Boulevard Southwest, Huntsville, Madison County, Alabama, United States, 35824

## 6 Floor 1 - Bedroom



Dimensions: 12'3" x 14'2"  
Area: 167 sq. ft  
Counted as living area: Yes

Heated: Yes  
Finished: Yes  
Enclosed: Yes  
Contiguous: Yes  
Permitted: Yes  
Wet space: No  
Addition: No  
Conversion: No

## 7 Floor 1 - Porch



Dimensions: 26'7" x 12'3"  
Area: 205 sq. ft  
Counted as living area: No

Heated: No  
Finished: Yes  
Enclosed: No  
Contiguous: Yes  
Permitted: Yes  
Wet space: No  
Addition: No  
Conversion: No

## 8 Floor 1 - Pantry



Dimensions: 10'4" x 6'8"  
Area: 68 sq. ft  
Counted as living area: Yes

Heated: Yes  
Finished: Yes  
Enclosed: Yes  
Contiguous: Yes  
Permitted: Yes  
Wet space: No  
Addition: No  
Conversion: No

# 417 Sage Creek Boulevard Southwest, Huntsville, Madison County, Alabama, United States, 35824

## 9 Floor 1 - WC



Dimensions: 5'2" x 5'2"  
Area: 26 sq. ft  
Counted as living area: Yes

Heated: Yes  
Finished: Yes  
Enclosed: Yes  
Contiguous: Yes  
Permitted: Yes  
Wet space: Yes  
Addition: No  
Conversion: No

## 10 Floor 1 - Hall



Dimensions: 4'6" x 10'3"  
Area: 46 sq. ft  
Counted as living area: Yes

Heated: Yes  
Finished: Yes  
Enclosed: Yes  
Contiguous: Yes  
Permitted: Yes  
Wet space: No  
Addition: No  
Conversion: No

## 11 Floor 1 - Bedroom

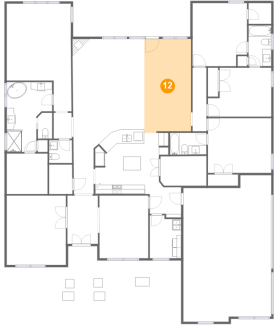


Dimensions: 14'3" x 12'4"  
Area: 175 sq. ft  
Counted as living area: Yes

Heated: Yes  
Finished: Yes  
Enclosed: Yes  
Contiguous: Yes  
Permitted: Yes  
Wet space: No  
Addition: No  
Conversion: No

# 417 Sage Creek Boulevard Southwest, Huntsville, Madison County, Alabama, United States, 35824

## 12 Floor 1 - Dining Area



Dimensions: 10'6" x 21'1"  
Area: 218 sq. ft  
Counted as living area: Yes

Heated: Yes  
Finished: Yes  
Enclosed: Yes  
Contiguous: Yes  
Permitted: Yes  
Wet space: No  
Addition: No  
Conversion: No

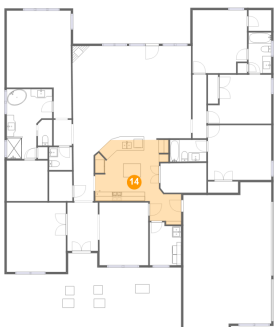
## 13 Floor 1 - Foyer



Dimensions: 6'10" x 10'10"  
Area: 75 sq. ft  
Counted as living area: Yes

Heated: Yes  
Finished: Yes  
Enclosed: Yes  
Contiguous: Yes  
Permitted: Yes  
Wet space: No  
Addition: No  
Conversion: No

## 14 Floor 1 - Kitchen



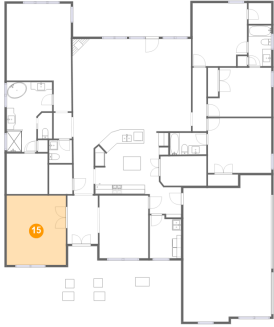
Dimensions: 19'4" x 18'2"  
Area: 241 sq. ft  
Counted as living area: Yes

Heated: Yes  
Finished: Yes  
Enclosed: Yes  
Contiguous: Yes  
Permitted: Yes  
Wet space: No  
Addition: No  
Conversion: No



# 417 Sage Creek Boulevard Southwest, Huntsville, Madison County, Alabama, United States, 35824

## 15 Floor 1 - Office



Dimensions: 13'3" x 15'7"  
Area: 207 sq. ft  
Counted as living area: Yes

Heated: Yes  
Finished: Yes  
Enclosed: Yes  
Contiguous: Yes  
Permitted: Yes  
Wet space: No  
Addition: No  
Conversion: No

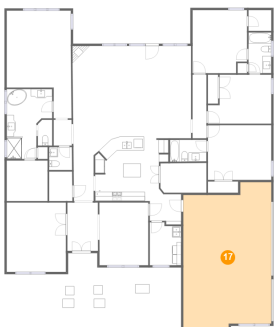
## 16 Floor 1 - W.I.C.



Dimensions: 9'2" x 9'1"  
Area: 83 sq. ft  
Counted as living area: Yes

Heated: Yes  
Finished: Yes  
Enclosed: Yes  
Contiguous: Yes  
Permitted: Yes  
Wet space: No  
Addition: No  
Conversion: No

## 17 Floor 1 - Garage



Dimensions: 19'9" x 31'9"  
Area: 602 sq. ft  
Counted as living area: No

Heated: No  
Finished: No  
Enclosed: Yes  
Contiguous: Yes  
Permitted: Yes  
Wet space: No  
Addition: No  
Conversion: No

# 417 Sage Creek Boulevard Southwest, Huntsville, Madison County, Alabama, United States, 35824

## 18 Floor 1 - Dining Room



Dimensions: 11'0" x 14'1"  
Area: 154 sq. ft  
Counted as living area: Yes

Heated: Yes  
Finished: Yes  
Enclosed: Yes  
Contiguous: Yes  
Permitted: Yes  
Wet space: No  
Addition: No  
Conversion: No

## 19 Floor 1 - Laundry



Dimensions: 7'0" x 9'8"  
Area: 65 sq. ft  
Counted as living area: Yes

Heated: Yes  
Finished: Yes  
Enclosed: Yes  
Contiguous: Yes  
Permitted: Yes  
Wet space: No  
Addition: No  
Conversion: No

## 20 Floor 1 - Primary Bedroom

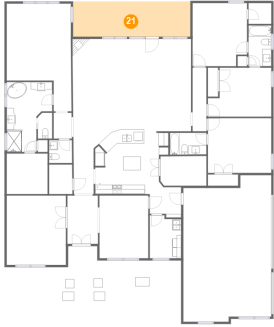


Dimensions: 14'5" x 24'2"  
Area: 276 sq. ft  
Counted as living area: Yes

Heated: Yes  
Finished: Yes  
Enclosed: Yes  
Contiguous: Yes  
Permitted: Yes  
Wet space: No  
Addition: No  
Conversion: No

# 417 Sage Creek Boulevard Southwest, Huntsville, Madison County, Alabama, United States, 35824

## 21 Floor 1 - Covered Patio



Dimensions: 26'3" x 7'10"  
Area: 208 sq. ft  
Counted as living area: No

Heated: No  
Finished: Yes  
Enclosed: No  
Contiguous: Yes  
Permitted: Yes  
Wet space: No  
Addition: No  
Conversion: No

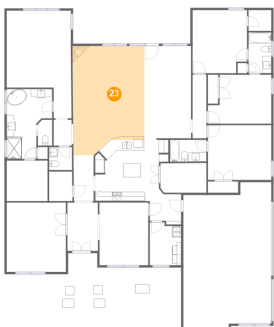
## 22 Floor 1 - WC



Dimensions: 3'3" x 5'9"  
Area: 18 sq. ft  
Counted as living area: Yes

Heated: Yes  
Finished: Yes  
Enclosed: Yes  
Contiguous: Yes  
Permitted: Yes  
Wet space: No  
Addition: No  
Conversion: No

## 23 Floor 1 - Living Room



Dimensions: 16'2" x 24'6"  
Area: 361 sq. ft  
Counted as living area: Yes

Heated: Yes  
Finished: Yes  
Enclosed: Yes  
Contiguous: Yes  
Permitted: Yes  
Wet space: No  
Addition: No  
Conversion: No

# 417 Sage Creek Boulevard Southwest, Huntsville, Madison County, Alabama, United States, 35824

## 24 Floor 1 - Storage



Dimensions: 5'3" x 6'7"  
Area: 35 sq. ft  
Counted as living area: No

Heated: Yes  
Finished: Yes  
Enclosed: No  
Contiguous: Yes  
Permitted: Yes  
Wet space: No  
Addition: No  
Conversion: No

## 25 Floor 1 - Bath



Dimensions: 5'1" x 9'2"  
Area: 47 sq. ft  
Counted as living area: Yes

Heated: Yes  
Finished: Yes  
Enclosed: Yes  
Contiguous: Yes  
Permitted: Yes  
Wet space: Yes  
Addition: No  
Conversion: No

## 26 Floor 1 - Bath



Dimensions: 8'2" x 4'11"  
Area: 40 sq. ft  
Counted as living area: Yes

Heated: Yes  
Finished: Yes  
Enclosed: Yes  
Contiguous: Yes  
Permitted: Yes  
Wet space: Yes  
Addition: No  
Conversion: No