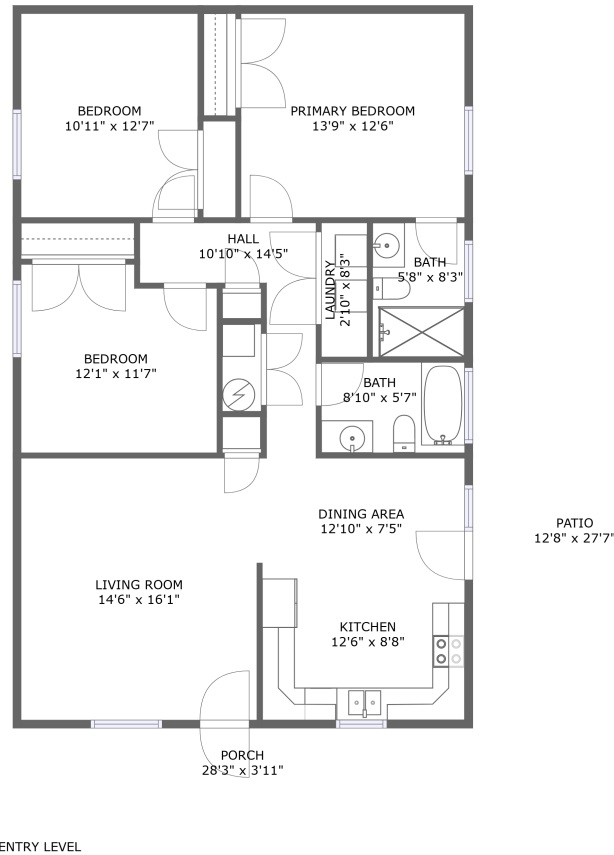



332 East Augusta Avenue, Timberidge Acres, Vinton, Roanoke County, Virginia, United States, 24179



Property summary

 **0** Garages

 **3** Bedrooms

 **2** Bathrooms

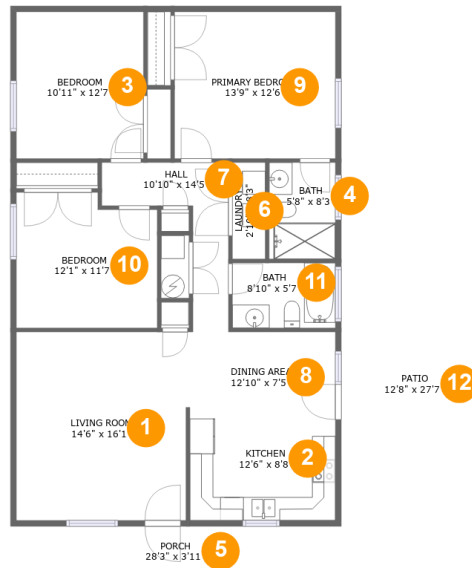
 **0** Half baths

 **1** Floors

 **1,262**
Gross living
area sqft

 **1,725**
Total sqft

332 East Augusta Avenue, Timberidge Acres, Vinton, Roanoke County, Virginia, United States, 24179



Room dimensions

Floor 1

Total sqft: 1725 Living area: 1262

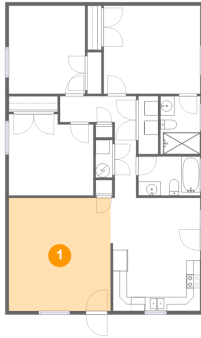
#		Dimensions	sqft	Counted as living area
1	Living Room	14'6" x 16'1"	234 sq. ft	Yes
2	Kitchen	12'6" x 8'8"	108 sq. ft	Yes
3	Bedroom	10'11" x 12'7"	137 sq. ft	Yes
4	Bath	5'8" x 8'3"	47 sq. ft	Yes
5	Porch	28'3" x 3'11"	111 sq. ft	No
6	Laundry	2'10" x 8'3"	23 sq. ft	Yes
7	Hall	10'10" x 14'5"	73 sq. ft	Yes
8	Dining Area	12'10" x 7'5"	95 sq. ft	Yes
9	Primary Bedroom	13'9" x 12'6"	173 sq. ft	Yes
10	Bedroom	12'1" x 11'7"	133 sq. ft	Yes
11	Bath	8'10" x 5'7"	49 sq. ft	Yes

**332 East Augusta Avenue, Timberidge Acres, Vinton,
Roanoke County, Virginia, United States, 24179**

#		Dimensions	sqft	Counted as living area
12	Patio	12'8" x 27'7"	352 sq. ft	No

**332 East Augusta Avenue, Timberidge Acres, Vinton,
Roanoke County, Virginia, United States, 24179**

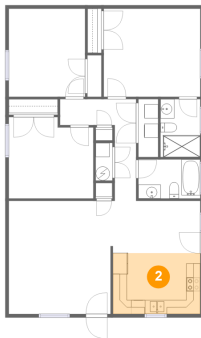
1 Floor 1 - Living Room



Dimensions: 14'6" x 16'1"
Area: 234 sq. ft
Counted as living area: Yes

Heated: Yes
Finished: Yes
Enclosed: Yes
Contiguous: Yes
Permitted: Yes
Wet space: No
Addition: No
Conversion: No

2 Floor 1 - Kitchen

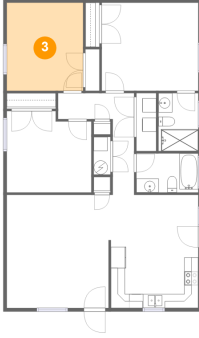


Dimensions: 12'6" x 8'8"
Area: 108 sq. ft
Counted as living area: Yes

Heated: Yes
Finished: Yes
Enclosed: Yes
Contiguous: Yes
Permitted: Yes
Wet space: No
Addition: No
Conversion: No

**332 East Augusta Avenue, Timberidge Acres, Vinton,
Roanoke County, Virginia, United States, 24179**

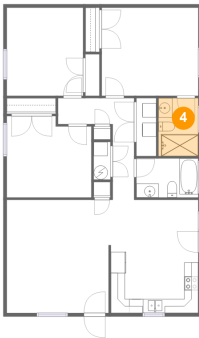
3 Floor 1 - Bedroom



Dimensions: 10'11" x 12'7"
Area: 137 sq. ft
Counted as living area: Yes

Heated: Yes
Finished: Yes
Enclosed: Yes
Contiguous: Yes
Permitted: Yes
Wet space: No
Addition: No
Conversion: No

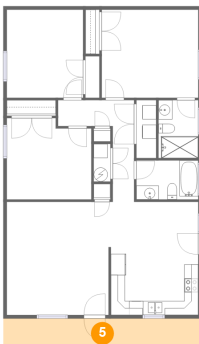
4 Floor 1 - Bath



Dimensions: 5'8" x 8'3"
Area: 47 sq. ft
Counted as living area: Yes

Heated: Yes
Finished: Yes
Enclosed: Yes
Contiguous: Yes
Permitted: Yes
Wet space: Yes
Addition: No
Conversion: No

5 Floor 1 - Porch

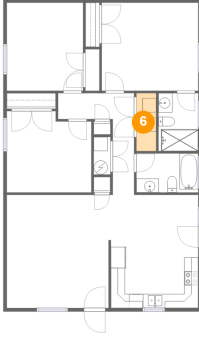


Dimensions: 28'3" x 3'11"
Area: 111 sq. ft
Counted as living area: No

Heated: No
Finished: Yes
Enclosed: No
Contiguous: Yes
Permitted: Yes
Wet space: No
Addition: No
Conversion: No

**332 East Augusta Avenue, Timberidge Acres, Vinton,
Roanoke County, Virginia, United States, 24179**

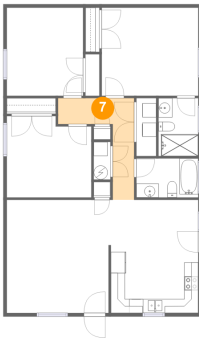
6 Floor 1 - Laundry



Dimensions: 2'10" x 8'3"
Area: 23 sq. ft
Counted as living area: Yes

Heated: Yes
Finished: Yes
Enclosed: Yes
Contiguous: Yes
Permitted: Yes
Wet space: No
Addition: No
Conversion: No

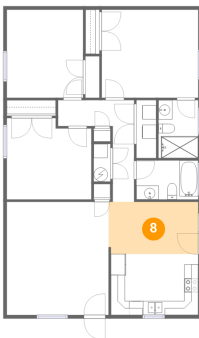
7 Floor 1 - Hall



Dimensions: 10'10" x 14'5"
Area: 73 sq. ft
Counted as living area: Yes

Heated: Yes
Finished: Yes
Enclosed: Yes
Contiguous: Yes
Permitted: Yes
Wet space: No
Addition: No
Conversion: No

8 Floor 1 - Dining Area

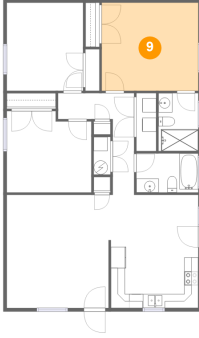


Dimensions: 12'10" x 7'5"
Area: 95 sq. ft
Counted as living area: Yes

Heated: Yes
Finished: Yes
Enclosed: Yes
Contiguous: Yes
Permitted: Yes
Wet space: No
Addition: No
Conversion: No

**332 East Augusta Avenue, Timberidge Acres, Vinton,
Roanoke County, Virginia, United States, 24179**

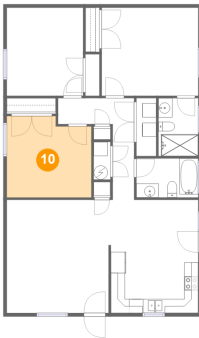
9 Floor 1 - Primary Bedroom



Dimensions: 13'9" x 12'6"
Area: 173 sq. ft
Counted as living area: Yes

Heated: Yes
Finished: Yes
Enclosed: Yes
Contiguous: Yes
Permitted: Yes
Wet space: No
Addition: No
Conversion: No

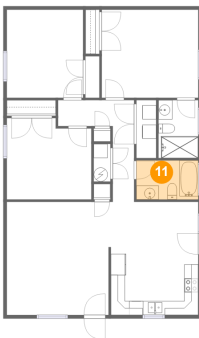
10 Floor 1 - Bedroom



Dimensions: 12'1" x 11'7"
Area: 133 sq. ft
Counted as living area: Yes

Heated: Yes
Finished: Yes
Enclosed: Yes
Contiguous: Yes
Permitted: Yes
Wet space: No
Addition: No
Conversion: No

11 Floor 1 - Bath

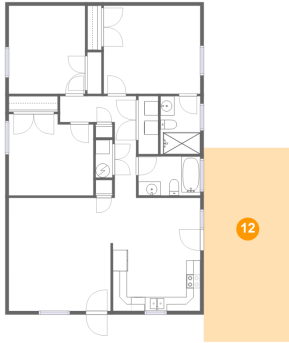


Dimensions: 8'10" x 5'7"
Area: 49 sq. ft
Counted as living area: Yes

Heated: Yes
Finished: Yes
Enclosed: Yes
Contiguous: Yes
Permitted: Yes
Wet space: Yes
Addition: No
Conversion: No

**332 East Augusta Avenue, Timberidge Acres, Vinton,
Roanoke County, Virginia, United States, 24179**

12 Floor 1 - Patio



Dimensions: 12'8" x 27'7"
Area: 352 sq. ft
Counted as living area: No

Heated: No
Finished: Yes
Enclosed: No
Contiguous: Yes
Permitted: Yes
Wet space: No
Addition: No
Conversion: No