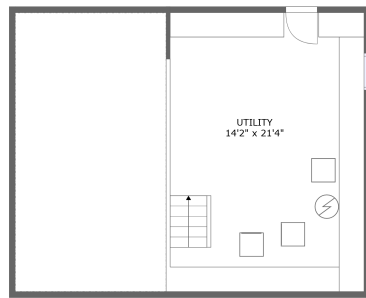
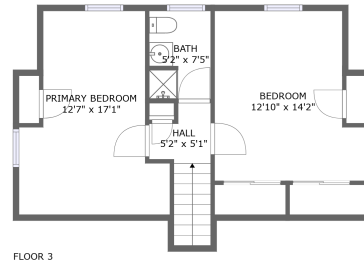
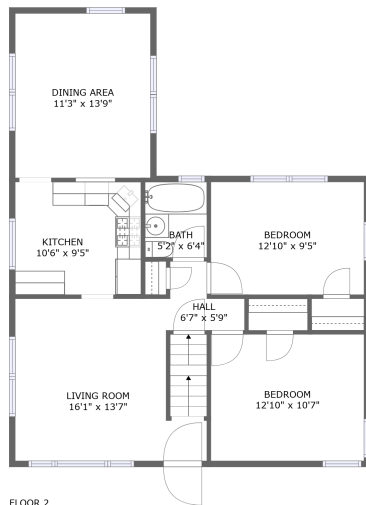



26a Linden Lane, Shirley, Suffolk County, New York, United States, 11967



Property summary

 **0** Garages

 **4** Bedrooms

 **2** Bathrooms

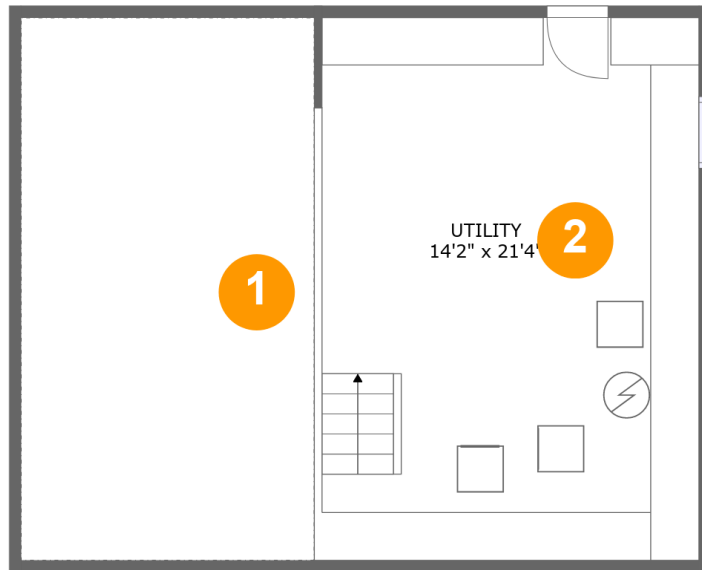
 **0** Half baths

 **3** Floors

 **1,339**
Gross living
area sqft

 **2,179**
Total sqft

**26a Linden Lane, Shirley, Suffolk County, New York,
United States, 11967**



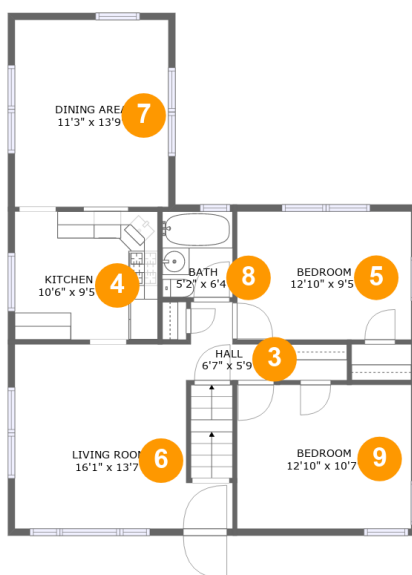
Room dimensions

Floor 1

Total sqft: 736 Living area: 0

#		Dimensions	sqft	Counted as living area
1	Crawl Space	12'7" x 23'4"	295 sq. ft	No
2	Utility	14'2" x 21'4"	386 sq. ft	No

26a Linden Lane, Shirley, Suffolk County, New York, United States, 11967



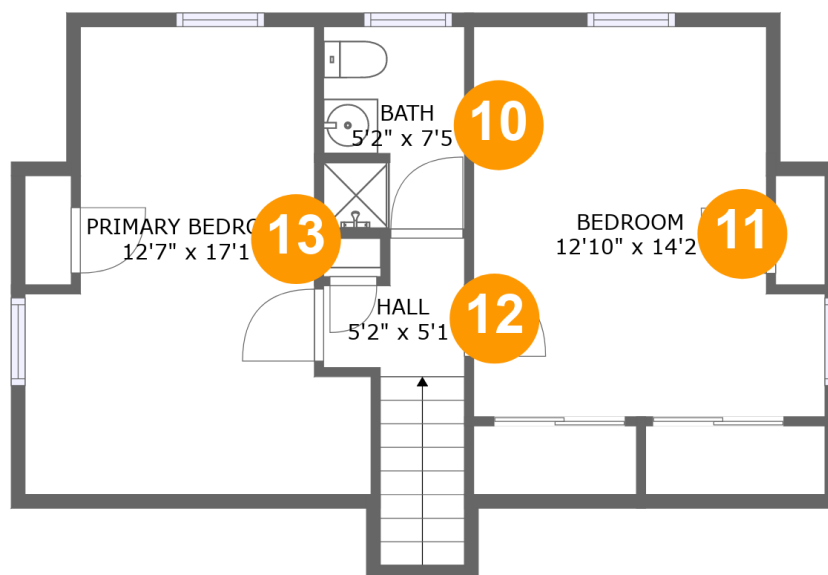
Room dimensions

Floor 2

Total sqft: 909 Living area: 909

#		Dimensions	sqft	Counted as living area
3	Hall	6'7" x 5'9"	27 sq. ft	Yes
4	Kitchen	10'6" x 9'5"	99 sq. ft	Yes
5	Bedroom	12'10" x 9'5"	121 sq. ft	Yes
6	Living Room	16'1" x 13'7"	183 sq. ft	Yes
7	Dining Area	11'3" x 13'9"	157 sq. ft	Yes
8	Bath	5'2" x 6'4"	33 sq. ft	Yes
9	Bedroom	12'10" x 10'7"	136 sq. ft	Yes

26a Linden Lane, Shirley, Suffolk County, New York, United States, 11967



Room dimensions

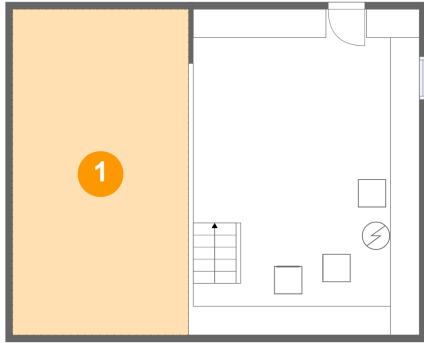
Floor 3

Total sqft: 534 Living area: 430

#		Dimensions	sqft	Counted as living area
10	Bath	5'2" x 7'5"	37 sq. ft	Yes
11	Bedroom	12'10" x 14'2"	162 sq. ft	Yes
12	Hall	5'2" x 5'1"	42 sq. ft	Yes
13	Primary Bedroom	12'7" x 17'1"	134 sq. ft	Yes

26a Linden Lane, Shirley, Suffolk County, New York, United States, 11967

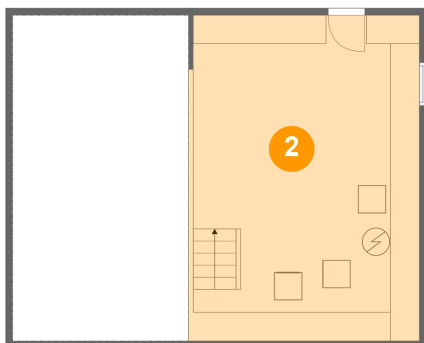
1 Floor 1 - Crawl Space



Dimensions: 12'7" x 23'4"
Area: 295 sq. ft
Counted as living area: No

Heated: No
Finished: No
Enclosed: No
Contiguous: Yes
Permitted: No
Wet space: No
Addition: No
Conversion: No

2 Floor 1 - Utility

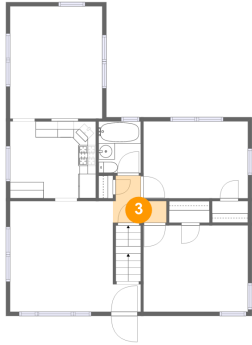


Dimensions: 14'2" x 21'4"
Area: 386 sq. ft
Counted as living area: No

Heated: Yes
Finished: No
Enclosed: Yes
Contiguous: Yes
Permitted: Yes
Wet space: No
Addition: No
Conversion: No

26a Linden Lane, Shirley, Suffolk County, New York, United States, 11967

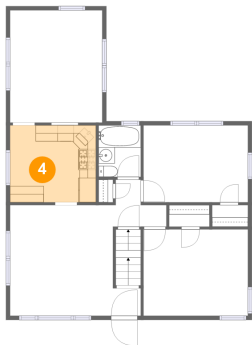
3 Floor 2 - Hall



Dimensions: 6'7" x 5'9"
Area: 27 sq. ft
Counted as living area: Yes

Heated: Yes
Finished: Yes
Enclosed: Yes
Contiguous: Yes
Permitted: Yes
Wet space: No
Addition: No
Conversion: No

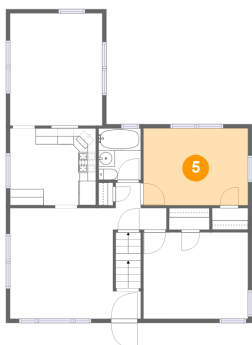
4 Floor 2 - Kitchen



Dimensions: 10'6" x 9'5"
Area: 99 sq. ft
Counted as living area: Yes

Heated: Yes
Finished: Yes
Enclosed: Yes
Contiguous: Yes
Permitted: Yes
Wet space: No
Addition: No
Conversion: No

5 Floor 2 - Bedroom

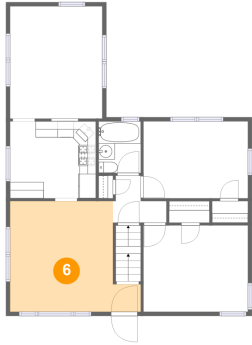


Dimensions: 12'10" x 9'5"
Area: 121 sq. ft
Counted as living area: Yes

Heated: Yes
Finished: Yes
Enclosed: Yes
Contiguous: Yes
Permitted: Yes
Wet space: No
Addition: No
Conversion: No

26a Linden Lane, Shirley, Suffolk County, New York, United States, 11967

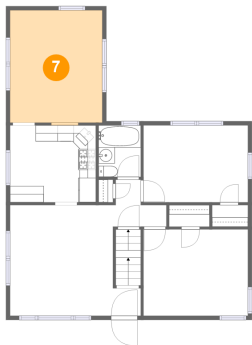
6 Floor 2 - Living Room



Dimensions: 16'1" x 13'7"
Area: 183 sq. ft
Counted as living area: Yes

Heated: Yes
Finished: Yes
Enclosed: Yes
Contiguous: Yes
Permitted: Yes
Wet space: No
Addition: No
Conversion: No

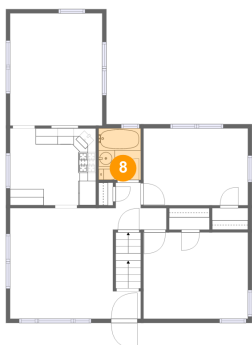
7 Floor 2 - Dining Area



Dimensions: 11'3" x 13'9"
Area: 157 sq. ft
Counted as living area: Yes

Heated: Yes
Finished: Yes
Enclosed: Yes
Contiguous: Yes
Permitted: Yes
Wet space: No
Addition: No
Conversion: No

8 Floor 2 - Bath

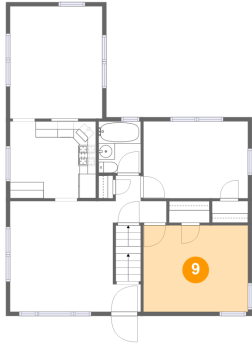


Dimensions: 5'2" x 6'4"
Area: 33 sq. ft
Counted as living area: Yes

Heated: Yes
Finished: Yes
Enclosed: Yes
Contiguous: Yes
Permitted: Yes
Wet space: Yes
Addition: No
Conversion: No

26a Linden Lane, Shirley, Suffolk County, New York, United States, 11967

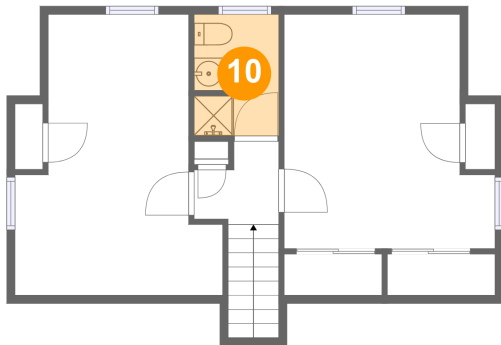
9 Floor 2 - Bedroom



Dimensions: 12'10" x 10'7"
Area: 136 sq. ft
Counted as living area: Yes

Heated: Yes
Finished: Yes
Enclosed: Yes
Contiguous: Yes
Permitted: Yes
Wet space: No
Addition: No
Conversion: No

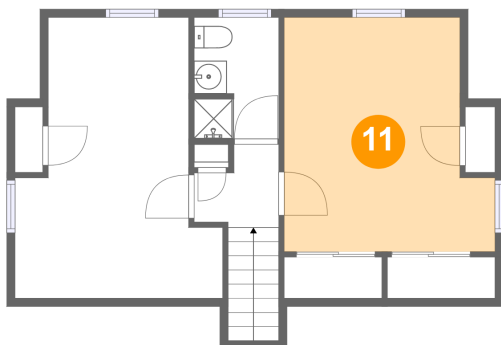
10 Floor 3 - Bath



Dimensions: 5'2" x 7'5"
Area: 37 sq. ft
Counted as living area: Yes

Heated: Yes
Finished: Yes
Enclosed: Yes
Contiguous: Yes
Permitted: Yes
Wet space: Yes
Addition: No
Conversion: No

11 Floor 3 - Bedroom

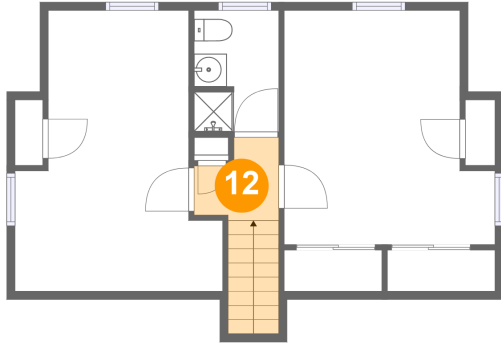


Dimensions: 12'10" x 14'2"
Area: 162 sq. ft
Counted as living area: Yes

Heated: Yes
Finished: Yes
Enclosed: Yes
Contiguous: Yes
Permitted: Yes
Wet space: No
Addition: No
Conversion: No

26a Linden Lane, Shirley, Suffolk County, New York,
United States, 11967

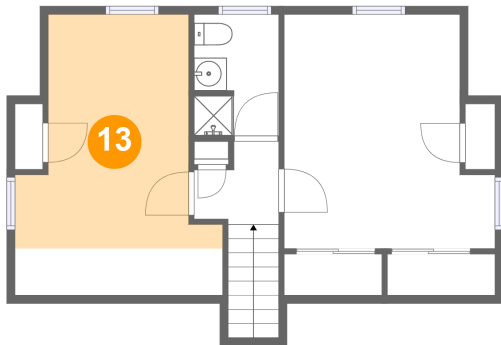
12 Floor 3 - Hall



Dimensions: 5'2" x 5'1"
Area: 42 sq. ft
Counted as living area: Yes

Heated: Yes
Finished: Yes
Enclosed: Yes
Contiguous: Yes
Permitted: Yes
Wet space: No
Addition: No
Conversion: No

13 Floor 3 - Primary Bedroom



Dimensions: 12'7" x 17'1"
Area: 134 sq. ft
Counted as living area: Yes

Heated: Yes
Finished: Yes
Enclosed: Yes
Contiguous: Yes
Permitted: Yes
Wet space: No
Addition: No
Conversion: No