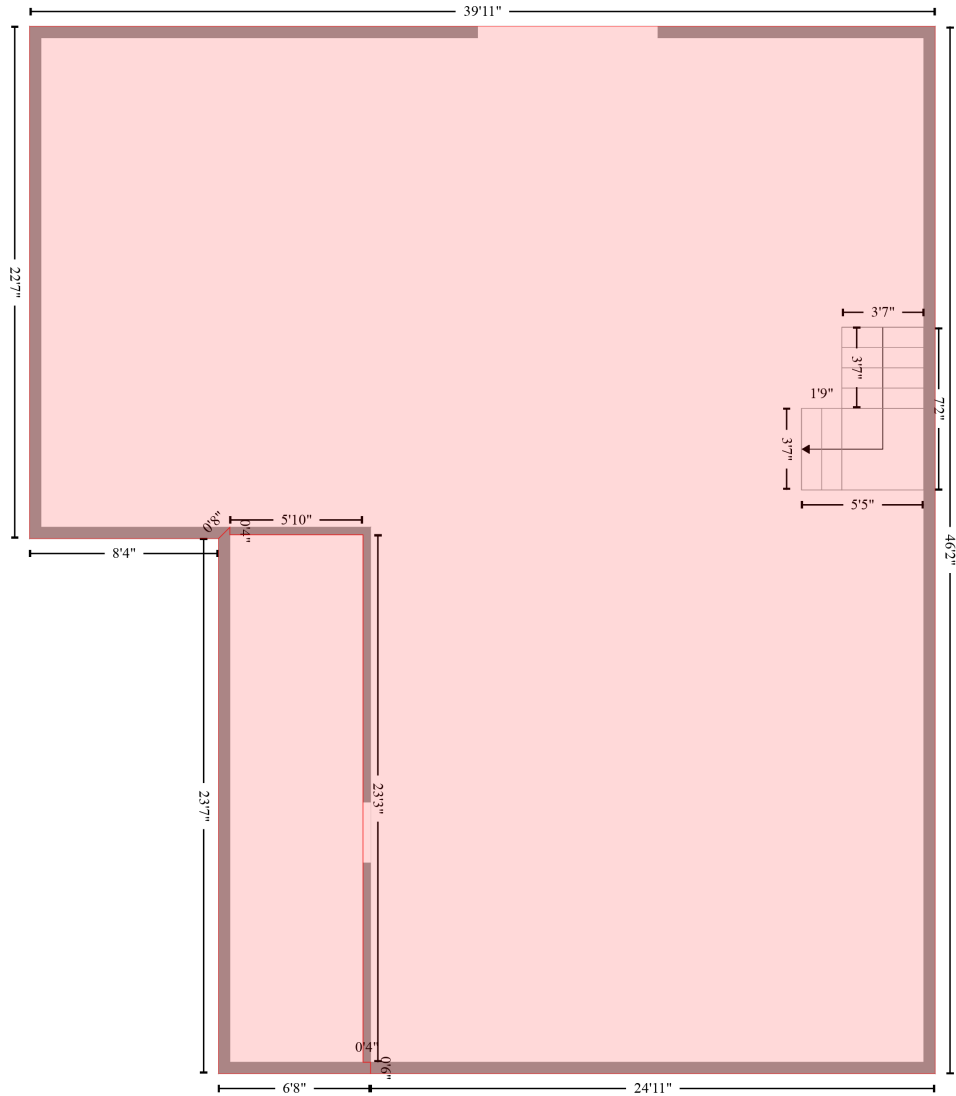


351 County Road 1583, Cullman, Cullman County, Alabama, United States, 35058

Gross Living Area: 1468 sq. ft

BASEMENT (1)
[AREA: 1496]



OTHER ROOM (2)
[AREA: 152]

Space	Area (sq. ft)	Calculation <small>Coordinate Polygon Area Algorithm using inches</small>
BASEMENT (Non-living area)	1496	$-((578.8 + 578.8) * (-63.8 - 490.3) + (578.8 + 280) * (490.3 - 490.3) + (280 + 280) * (490.3 - 484.3) + (280 + 276) * (484.3 - 484.3) + (276 + 276) * (484.3 - 205.2) + (276 + 205.5) * (205.2 - 205.2) + (205.5 + 205.5) * (205.2 - 201.2) + (205.5 + 199.5) * (201.2 - 207.2) + (199.5 + 99.5) * (207.2 - 207.2) + (99.5 + 99.5) * (207.2 - -63.8) + (99.5 + 578.8) * (-63.8 - -63.8)) * 0.5 * 0.00694$
OTHER ROOM (Non-living area)	152	$-((205.5 + 205.5) * (201.2 - 205.2) + (205.5 + 276) * (205.2 - 205.2) + (276 + 276) * (205.2 - 484.3) + (276 + 280) * (484.3 - 484.3) + (280 + 280) * (484.3 - 490.3) + (280 + 199.5) * (490.3 -$

351 County Road 1583, Cullman, Cullman County, Alabama, United States, 35058

Gross Living Area: 1468 sq. ft

Space	Area (sq. ft)	Calculation <small>Coordinate Polygon Area Algorithm using inches</small>
		$490.3 + (199.5 + 199.5) * (490.3 - 207.2) + (199.5 + 205.5) * (207.2 - 201.2) * 0.5 * 0.00694$

351 County Road 1583, Cullman, Cullman County, Alabama, United States, 35058

Gross Living Area: 1468 sq. ft

Space	Area (sq. ft)	Calculation <small>Coordinate Polygon Area Algorithm using inches</small>
GARAGE (Non-living area)	745	$-\left((282.3 + 282.3) * (449.1 - 455.1) + (282.3 + 348) * (455.1 - 455.1) + (348 + 348) * (455.1 - 487.1) + (348 + 448.6) * (487.1 - 487.1) + (448.6 + 448.6) * (487.1 - 455.1) + (448.6 + 591.9) * (455.1 - 455.1) + (591.9 + 591.9) * (455.1 - 741.8) + (591.9 + 207.8) * (741.8 - 741.8) + (207.8 + 207.8) * (741.8 - 449.1) + (207.8 + 282.3) * (449.1 - 449.1)\right) * 0.5 * 0.00694$
DECK (Non-living area)	296	$-\left((737.6 + 737.6) * (293.7 - 586.5) + (737.6 + 591.9) * (586.5 - 586.5) + (591.9 + 591.9) * (586.5 - 293.7) + (591.9 + 737.6) * (293.7 - 293.7)\right) * 0.5 * 0.00694$
PORCH (Non-living area)	132	$-\left((276.3 + 276.3) * (172.1 - 449.1) + (276.3 + 207.8) * (449.1 - 449.1) + (207.8 + 207.8) * (449.1 - 172.1) + (207.8 + 276.3) * (172.1 - 172.1)\right) * 0.5 * 0.00694$
FIREPLACE (Non-living area)	22	$-\left((448.6 + 448.6) * (455.1 - 487.1) + (448.6 + 348) * (487.1 - 487.1) + (348 + 348) * (487.1 - 455.1) + (348 + 448.6) * (455.1 - 455.1)\right) * 0.5 * 0.00694$