

2908 Hadley Close Ln, Thompson's Station, TN

Gross Living Area: 3240 sq. ft



Space

Area (sq. ft)

Calculation Coordinate Polygon Area Algorithm using inches

FLOOR 1
(Living area)

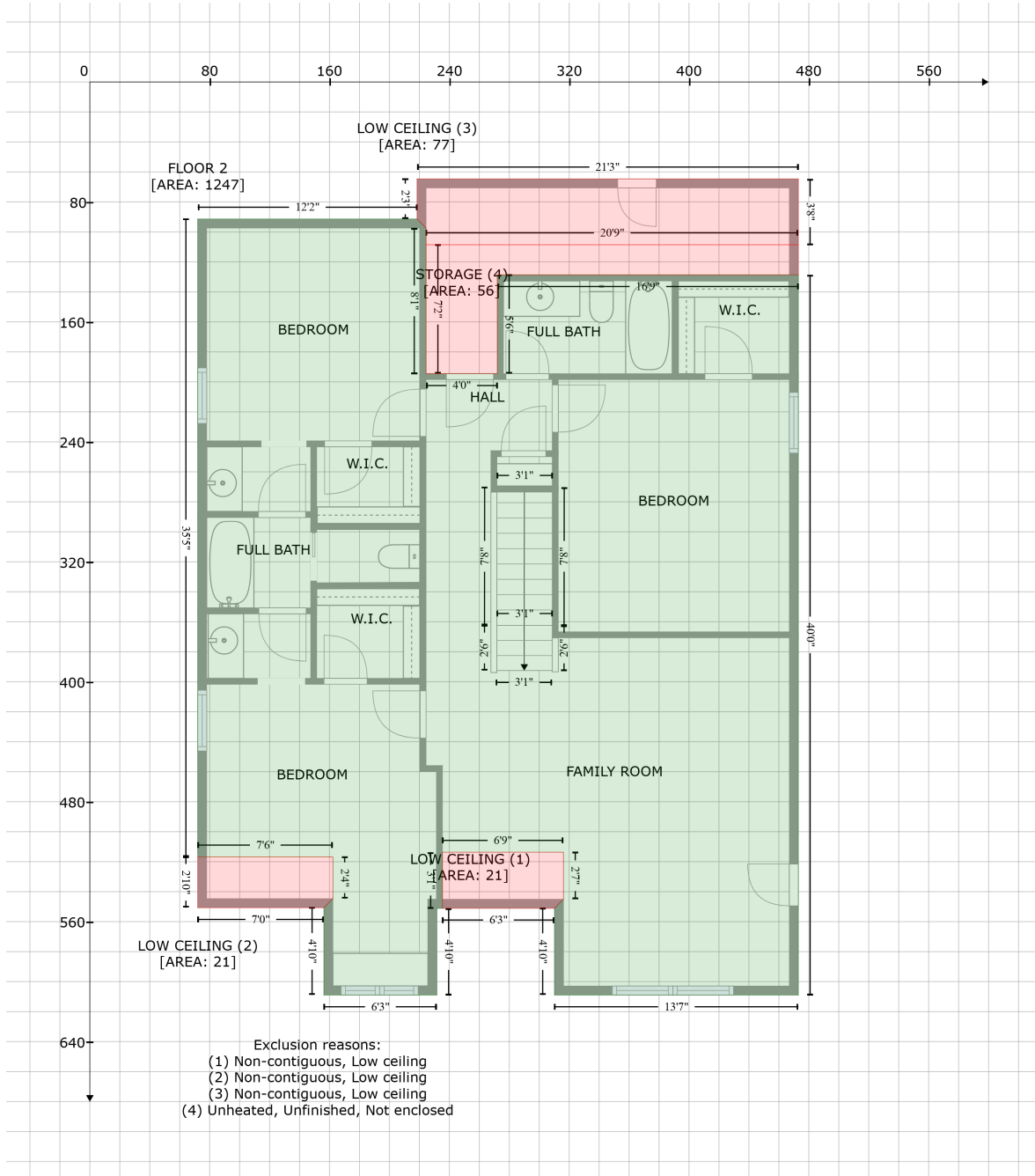
1993

$$\begin{aligned}
 & -((456.8 + 456.8) * (117.3 - 377.8) + (456.8 + 694.3) * (377.8 - 377.8) + (694.3 + 694.3) * (377.8 - 781.2) \\
 & + (694.3 + 543.5) * (781.2 - 781.2) + (543.5 + 543.5) * (781.2 - 737.5) + (543.5 + 452.1) * \\
 & (737.5 - 737.5) + (452.1 + 452.1) * (737.5 - 781.2) + (452.1 + 299.8) * (781.2 - 781.2) + (299.8 + \\
 & 299.8) * (781.2 - 538.5) + (299.8 + 119.1) * (538.5 - 538.5) + (119.1 + 119.1) * (538.5 - 397.3) + \\
 & (119.1 + 66.2) * (397.3 - 397.3) + (66.2 + 66.2) * (397.3 - 117.3) + (66.2 + 456.8) * (117.3 - \\
 & 117.3)) * 0.5 * 0.00694
 \end{aligned}$$

2908 Hadley Close Ln, Thompson's Station, TN
 Gross Living Area: 3240 sq. ft

Space	Area (sq. ft)	Calculation <small>Coordinate Polygon Area Algorithm using inches</small>
GARAGE (Non-living area)	486	$-\left((119.1 + 119.1) * (397.3 - 538.5) + (119.1 + 299.8) * (538.5 - 538.5) + (299.8 + 299.8) * (538.5 - 781.2) + (299.8 + 305.8) * (781.2 - 781.2) + (305.8 + 305.8) * (781.2 - 805.3) + (305.8 + 66.2) * (805.3 - 805.3) + (66.2 + 66.2) * (805.3 - 397.3) + (66.2 + 119.1) * (397.3 - 397.3)\right) * 0.5 * 0.00694$
PORCH (Non-living area)	155	$-\left((543.5 + 543.5) * (737.5 - 781.2) + (543.5 + 694.3) * (781.2 - 781.2) + (694.3 + 694.5) * (781.2 - 852) + (694.5 + 435.7) * (852 - 852) + (435.7 + 435.9) * (852 - 781.2) + (435.9 + 452.1) * (781.2 - 781.2) + (452.1 + 452.1) * (781.2 - 737.5) + (452.1 + 543.5) * (737.5 - 737.5)\right) * 0.5 * 0.00694$
COVERED PATIO (Non-living area)	160	$-\left((694.3 + 694.3) * (281.1 - 377.8) + (694.3 + 456.8) * (377.8 - 377.8) + (456.8 + 456.8) * (377.8 - 281.1) + (456.8 + 694.3) * (281.1 - 281.1)\right) * 0.5 * 0.00694$
PATIO (Non-living area)	359	$-\left((710.9 + 710.9) * (71.4 - 182.4) + (710.9 + 694.3) * (182.4 - 182.4) + (694.3 + 694.3) * (182.4 - 281.1) + (694.3 + 456.8) * (281.1 - 281.1) + (456.8 + 456.8) * (281.1 - 233.3) + (456.8 + 456.8) * (233.3 - 71.4) + (456.8 + 710.9) * (71.4 - 71.4)\right) * 0.5 * 0.00694$

2908 Hadley Close Ln, Thompson's Station, TN
 Gross Living Area: 3240 sq. ft



Space	Area (sq. ft)	Calculation
FLOOR 2 (Living area)	1247	Coordinate Polygon Area Algorithm using inches $-((218.5 + 224.5) * (91.4 - 97.4) + (224.5 + 224.5) * (97.4 - 194.6) + (224.5 + 272.1) * (194.6 - 194.6) + (272.1 + 272.1) * (194.6 - 128.6) + (272.1 + 473) * (128.6 - 128.6) + (473 + 473) * (128.6 - 608.9) + (473 + 310.2) * (608.9 - 608.9) + (310.2 + 310.2) * (608.9 - 551) + (310.2 + 316.2) * (551 - 545) + (316.2 + 316.2) * (545 - 513.7) + (316.2 + 235.4) * (513.7 - 513.7) + (235.4 + 235.4) * (513.7 - 551) + (235.4 + 231.6) * (551 - 551) + (231.6 + 231.6) * (551 - 608.9) + (231.6 + 156.3) * (608.9 - 608.9) + (156.3 + 156.3) * (608.9 - 550.6) + (156.3 + 162.3) * (550.6 - 544.6) + (162.3 + 162.3) * (544.6 - 516.8) + (162.3 + 72) * (516.8 - 516.8) + (72 + 72) * (516.8 - 91.4) +$

2908 Hadley Close Ln, Thompson's Station, TN
 Gross Living Area: 3240 sq. ft

Space	Area (sq. ft)	Calculation <small>Coordinate Polygon Area Algorithm using inches</small>
		$(72 + 218.5) * (91.4 - 91.4) * 0.5 * 0.00694$
LOW CEILING (Non-living area)	21	$-((316.2 + 316.2) * (513.7 - 545) + (316.2 + 310.2) * (545 - 551) + (310.2 + 235.4) * (551 - 551) + (235.4 + 235.4) * (551 - 513.7) + (235.4 + 316.2) * (513.7 - 513.7)) * 0.5 * 0.00694$
LOW CEILING (Non-living area)	21	$-((162.3 + 162.3) * (516.8 - 544.6) + (162.3 + 156.3) * (544.6 - 550.6) + (156.3 + 72) * (550.6 - 550.6) + (72 + 72) * (550.6 - 516.8) + (72 + 162.3) * (516.8 - 516.8)) * 0.5 * 0.00694$
LOW CEILING (Non-living area)	77	$-((473 + 473) * (64.6 - 108.5) + (473 + 224.5) * (108.5 - 108.5) + (224.5 + 224.5) * (108.5 - 97.4) + (224.5 + 218.5) * (97.4 - 91.4) + (218.5 + 218.5) * (91.4 - 64.6) + (218.5 + 473) * (64.6 - 64.6)) * 0.5 * 0.00694$
STORAGE (Non-living area)	56	$-((473 + 473) * (108.5 - 128.6) + (473 + 272.1) * (128.6 - 128.6) + (272.1 + 272.1) * (128.6 - 194.6) + (272.1 + 224.5) * (194.6 - 194.6) + (224.5 + 224.5) * (194.6 - 108.5) + (224.5 + 473) * (108.5 - 108.5)) * 0.5 * 0.00694$