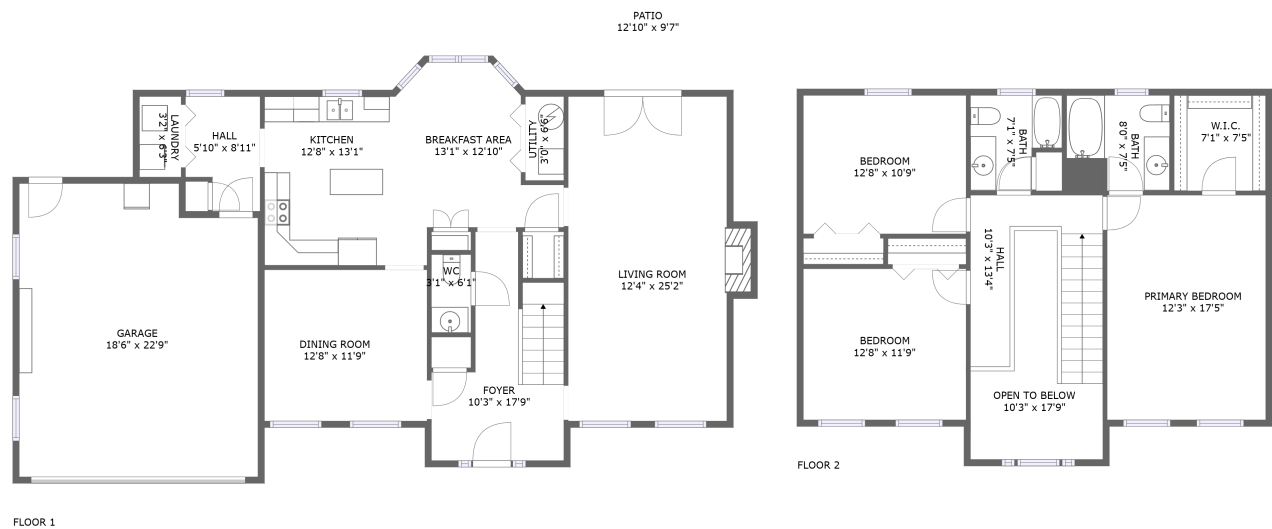


Home report

5032 Orchard Park Drive, Roanoke, Virginia 24019, United States




Total Area: 1868 sq. ft

Floor 1: 1035 sq. ft, Floor 2: 833 sq. ft

Excluded: Garage 406 sq. ft, Patio 124 sq. ft, Fireplace 11 sq. ft, Open to below 103 sq. ft, Walls: 166 sq. ft

Property summary

 2 Floors

 3 Bedrooms

 2 Bathrooms

Home report

**5032 Orchard Park Drive, Roanoke, Virginia 24019, United States**



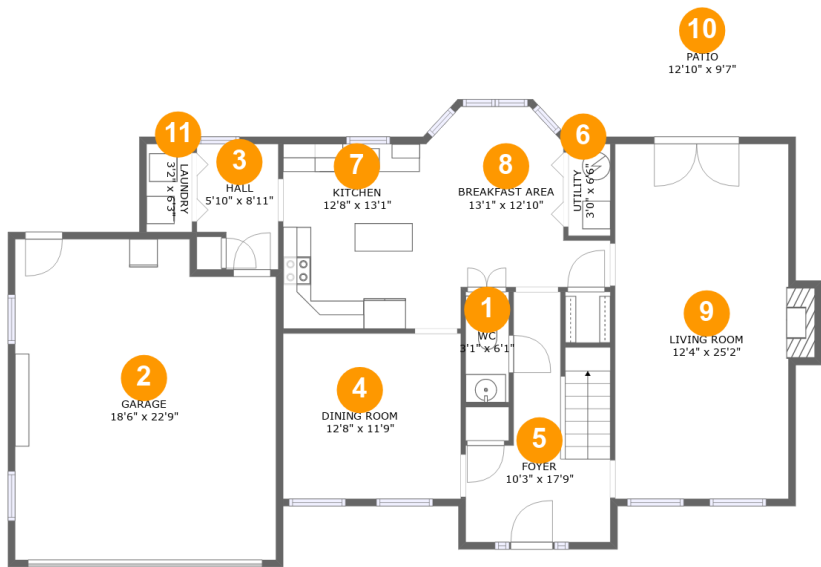
**1**  
Half baths



**1**  
Garages

Home report

5032 Orchard Park Drive, Roanoke, Virginia 24019, United States



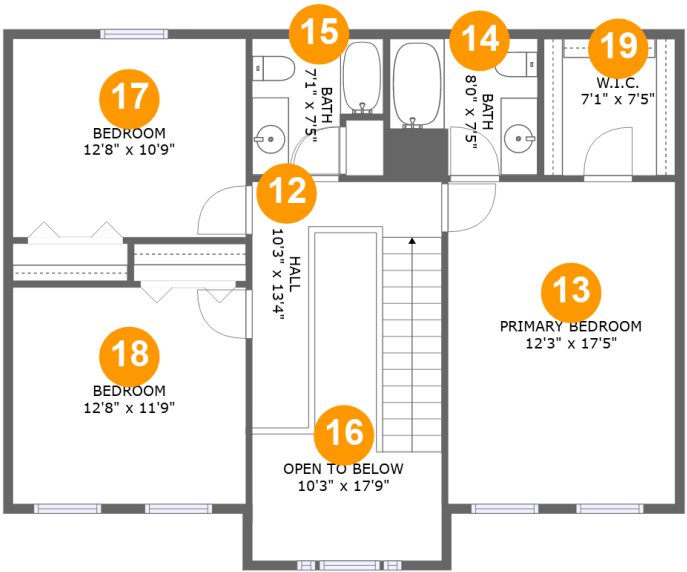
Room dimensions

Floor 1 Total:1035sqft    Excluded: 541sqft

#		Max Dimensions	sqft	Included
1	WC	3'1" x 6'1"	19 sq. ft	Yes
2	Garage	18'6" x 22'9"	406 sq. ft	No
3	Hall	5'10" x 8'11"	46 sq. ft	Yes
4	Dining Room	12'8" x 11'9"	148 sq. ft	Yes
5	Foyer	10'3" x 17'9"	131 sq. ft	Yes
6	Utility	3'0" x 6'6"	20 sq. ft	Yes
7	Kitchen	12'8" x 13'1"	141 sq. ft	Yes
8	Breakfast Area	13'1" x 12'10"	130 sq. ft	Yes
9	Living Room	12'4" x 25'2"	320 sq. ft	Yes
10	Patio	12'10" x 9'7"	124 sq. ft	No
11	Laundry	3'2" x 6'3"	20 sq. ft	Yes

Home report

5032 Orchard Park Drive, Roanoke, Virginia 24019, United States



Room dimensions

Floor 2 Total:833sqft Excluded: 103sqft

#		Max Dimensions	sqft	Included
12	Hall	10'3" x 13'4"	107 sq. ft	Yes
13	Primary Bedroom	12'3" x 17'5"	215 sq. ft	Yes
14	Bath	8'0" x 7'5"	51 sq. ft	Yes
15	Bath	7'1" x 7'5"	45 sq. ft	Yes
16	Open To Below	10'3" x 17'9"	103 sq. ft	No
17	Bedroom	12'8" x 10'9"	136 sq. ft	Yes
18	Bedroom	12'8" x 11'9"	148 sq. ft	Yes
19	W.I.C.	7'1" x 7'5"	53 sq. ft	Yes

1 Floor 1 - WC



Max Dimensions: 3'1" x 6'1"  
Calculated Area: 19 sq. ft  
Included: Yes

Heated: Yes  
Finished: Yes  
Enclosed: Yes  
Contiguous: Yes  
Permitted: Yes  
Wet space: Yes  
Addition: No  
Conversion: No

2 Floor 1 - Garage



Max Dimensions: 18'6" x 22'9"  
Calculated Area: 406 sq. ft  
Included: No

Heated: No  
Finished: No  
Enclosed: Yes  
Contiguous: Yes  
Permitted: Yes  
Wet space: No  
Addition: No  
Conversion: No

5032 Orchard Park Drive, Roanoke, Virginia 24019, United States

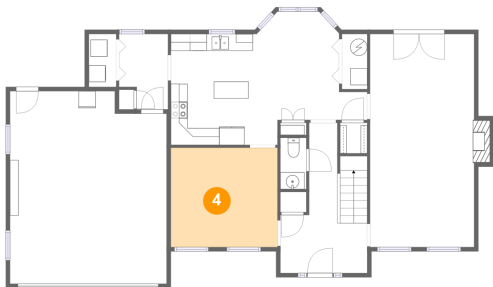
3 Floor 1 - Hall



Max Dimensions: 5'10" x 8'11"  
Calculated Area: 46 sq. ft  
Included: Yes

Heated: Yes  
Finished: Yes  
Enclosed: Yes  
Contiguous: Yes  
Permitted: Yes  
Wet space: No  
Addition: No  
Conversion: No

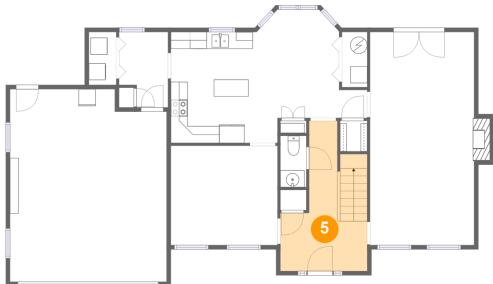
4 Floor 1 - Dining Room



Max Dimensions: 12'8" x 11'9"  
Calculated Area: 148 sq. ft  
Included: Yes

Heated: Yes  
Finished: Yes  
Enclosed: Yes  
Contiguous: Yes  
Permitted: Yes  
Wet space: No  
Addition: No  
Conversion: No

5 Floor 1 - Foyer



Max Dimensions: 10'3" x 17'9"  
Calculated Area: 131 sq. ft  
Included: Yes

Heated: Yes  
Finished: Yes  
Enclosed: Yes  
Contiguous: Yes  
Permitted: Yes  
Wet space: No  
Addition: No  
Conversion: No

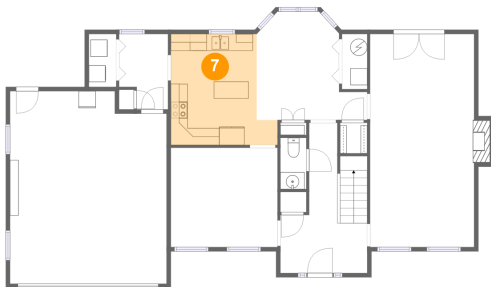
## 6 Floor 1 - Utility



Max Dimensions: 3'0" x 6'6"  
Calculated Area: 20 sq. ft  
Included: Yes

Heated: Yes  
Finished: Yes  
Enclosed: Yes  
Contiguous: Yes  
Permitted: Yes  
Wet space: No  
Addition: No  
Conversion: No

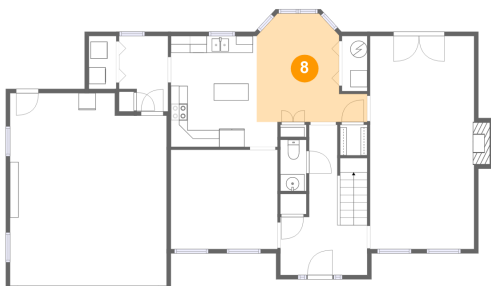
## 7 Floor 1 - Kitchen



Max Dimensions: 12'8" x 13'1"  
Calculated Area: 141 sq. ft  
Included: Yes

Heated: Yes  
Finished: Yes  
Enclosed: Yes  
Contiguous: Yes  
Permitted: Yes  
Wet space: No  
Addition: No  
Conversion: No

## 8 Floor 1 - Breakfast Area



Max Dimensions: 13'1" x 12'10"  
Calculated Area: 130 sq. ft  
Included: Yes

Heated: Yes  
Finished: Yes  
Enclosed: Yes  
Contiguous: Yes  
Permitted: Yes  
Wet space: No  
Addition: No  
Conversion: No

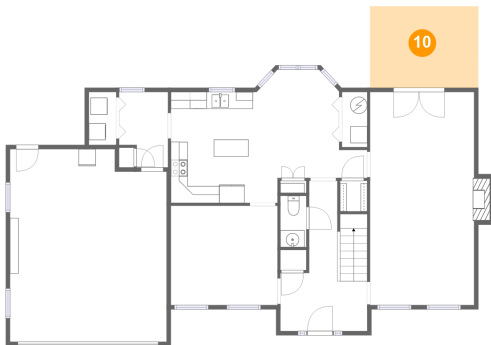
## 9 Floor 1 - Living Room



Max Dimensions: 12'4" x 25'2"  
Calculated Area: 320 sq. ft  
Included: Yes

Heated: Yes  
Finished: Yes  
Enclosed: Yes  
Contiguous: Yes  
Permitted: Yes  
Wet space: No  
Addition: No  
Conversion: No

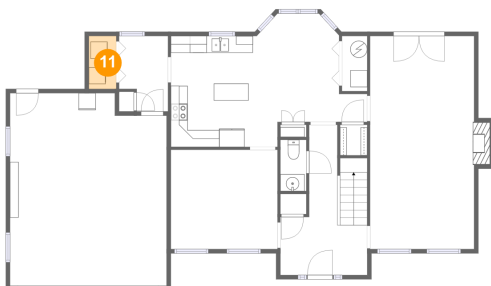
## 10 Floor 1 - Patio



Max Dimensions: 12'10" x 9'7"  
Calculated Area: 124 sq. ft  
Included: No

Heated: No  
Finished: Yes  
Enclosed: No  
Contiguous: Yes  
Permitted: Yes  
Wet space: No  
Addition: No  
Conversion: No

## 11 Floor 1 - Laundry

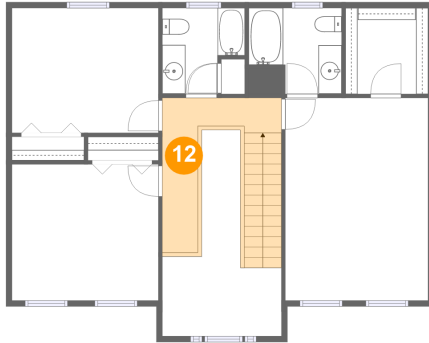


Max Dimensions: 3'2" x 6'3"  
Calculated Area: 20 sq. ft  
Included: Yes

Heated: Yes  
Finished: Yes  
Enclosed: Yes  
Contiguous: Yes  
Permitted: Yes  
Wet space: No  
Addition: No  
Conversion: No



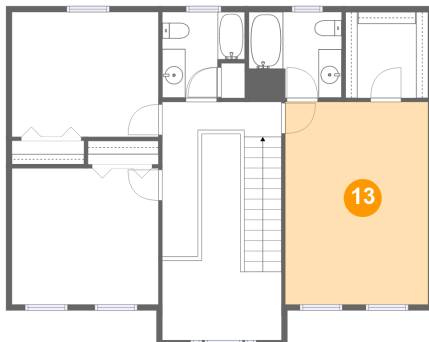
## 12 Floor 2 - Hall



Max Dimensions: 10'3" x 13'4"  
Calculated Area: 107 sq. ft  
Included: Yes

Heated: Yes  
Finished: Yes  
Enclosed: Yes  
Contiguous: Yes  
Permitted: Yes  
Wet space: No  
Addition: No  
Conversion: No

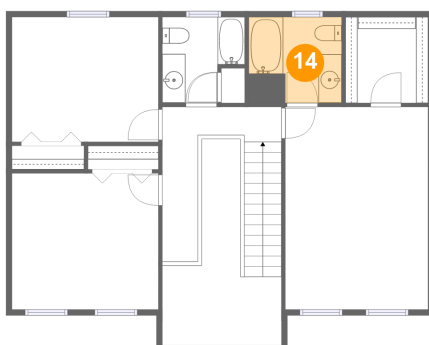
## 13 Floor 2 - Primary Bedroom



Max Dimensions: 12'3" x 17'5"  
Calculated Area: 215 sq. ft  
Included: Yes

Heated: Yes  
Finished: Yes  
Enclosed: Yes  
Contiguous: Yes  
Permitted: Yes  
Wet space: No  
Addition: No  
Conversion: No

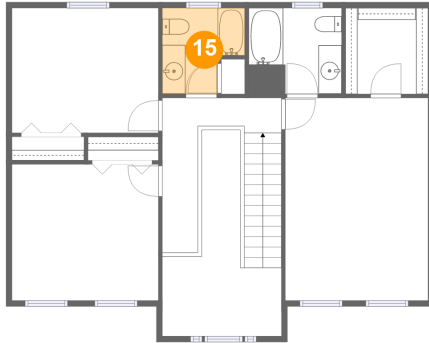
## 14 Floor 2 - Bath



Max Dimensions: 8'0" x 7'5"  
Calculated Area: 51 sq. ft  
Included: Yes

Heated: Yes  
Finished: Yes  
Enclosed: Yes  
Contiguous: Yes  
Permitted: Yes  
Wet space: Yes  
Addition: No  
Conversion: No

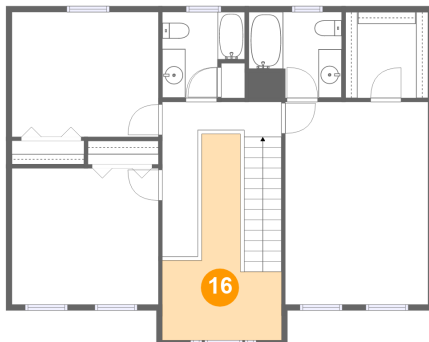
## 15 Floor 2 - Bath



Max Dimensions: 7'1" x 7'5"  
Calculated Area: 45 sq. ft  
Included: Yes

Heated: Yes  
Finished: Yes  
Enclosed: Yes  
Contiguous: Yes  
Permitted: Yes  
Wet space: Yes  
Addition: No  
Conversion: No

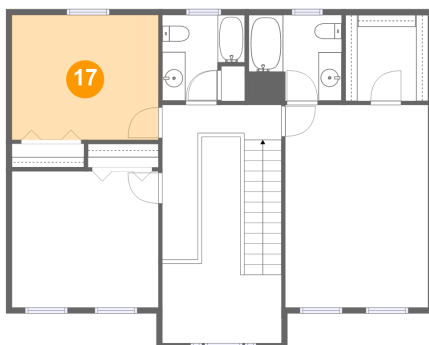
## 16 Floor 2 - Open To Below



Max Dimensions: 10'3" x 17'9"  
Calculated Area: 103 sq. ft  
Included: No

Heated: No  
Finished: No  
Enclosed: No  
Contiguous: Yes  
Permitted: No  
Wet space: No  
Addition: No  
Conversion: No

## 17 Floor 2 - Bedroom

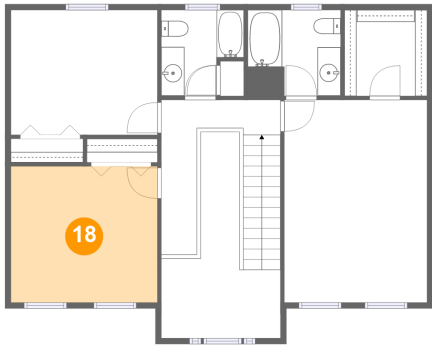


Max Dimensions: 12'8" x 10'9"  
Calculated Area: 136 sq. ft  
Included: Yes

Heated: Yes  
Finished: Yes  
Enclosed: Yes  
Contiguous: Yes  
Permitted: Yes  
Wet space: No  
Addition: No  
Conversion: No

5032 Orchard Park Drive, Roanoke, Virginia 24019, United States

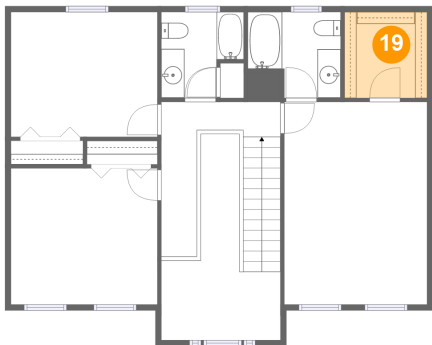
18 Floor 2 - Bedroom



Max Dimensions: 12'8" x 11'9"  
Calculated Area: 148 sq. ft  
Included: Yes

Heated: Yes  
Finished: Yes  
Enclosed: Yes  
Contiguous: Yes  
Permitted: Yes  
Wet space: No  
Addition: No  
Conversion: No

19 Floor 2 - W.I.C.



Max Dimensions: 7'1" x 7'5"  
Calculated Area: 53 sq. ft  
Included: Yes

Heated: Yes  
Finished: Yes  
Enclosed: Yes  
Contiguous: Yes  
Permitted: Yes  
Wet space: No  
Addition: No  
Conversion: No