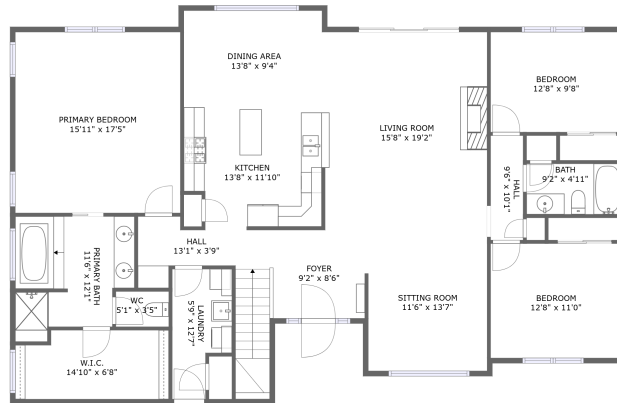
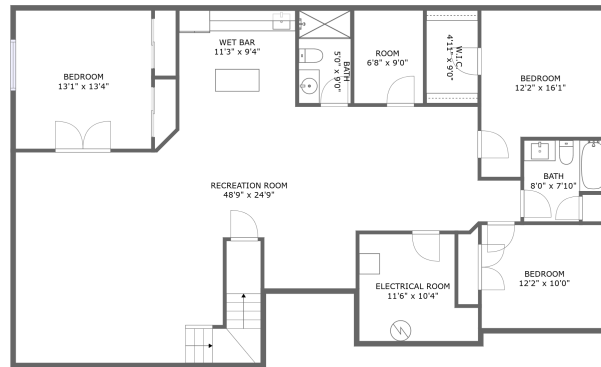


7706 Shadow Mountain Cir, Cheyenne, WY, US



FLOOR 2




FLOOR 1

Property Summary

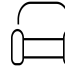
 **0** garages

 **6** bedrooms

 **4** bathrooms

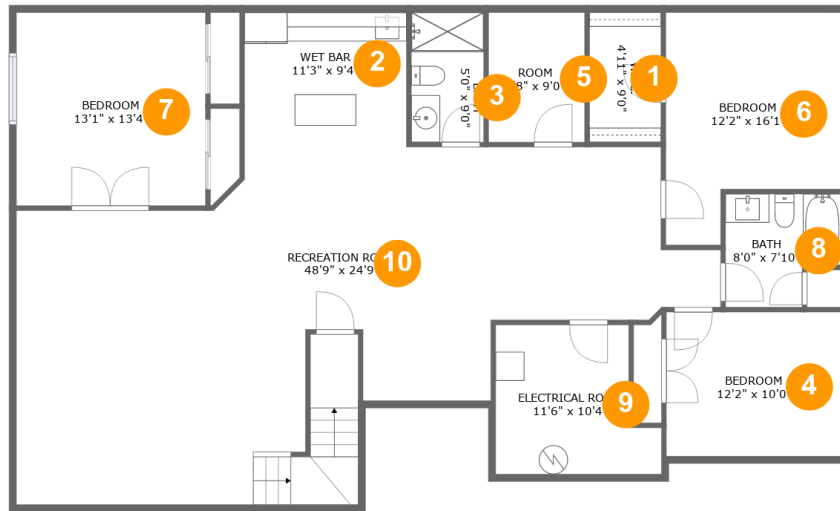
 **0** half baths

 **2** floors

 **3,846** Gross Living Area sqft

 **3,957** total sqft

7706 Shadow Mountain Cir, Cheyenne, WY, US



Room Dimensions

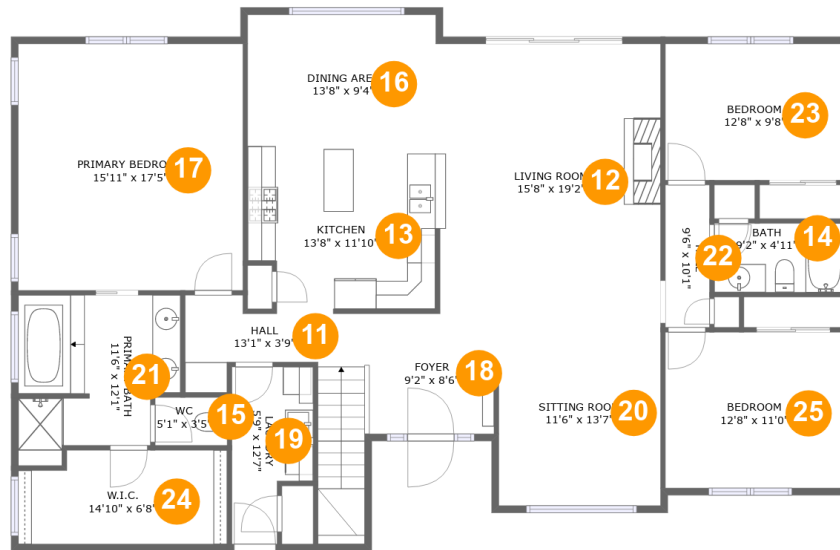
Floor 1

Total sqft: 1908

Living area: 1797

#	Room name	Dimensions	Area (sqft)	Counted as Living Area
1	W.i.c.	4'11" x 9'0"	44 sq. ft	Yes
2	Wet Bar	11'3" x 9'4"	104 sq. ft	Yes
3	Bath	5'0" x 9'0"	45 sq. ft	Yes
4	Bedroom	12'2" x 10'0"	121 sq. ft	Yes
5	Room	6'8" x 9'0"	60 sq. ft	Yes
6	Bedroom	12'2" x 16'1"	163 sq. ft	Yes
7	Bedroom	13'1" x 13'4"	175 sq. ft	Yes
8	Bath	8'0" x 7'10"	55 sq. ft	Yes
9	Electrical Room	11'6" x 10'4"	103 sq. ft	No
10	Recreation Room	48'9" x 24'9"	830 sq. ft	Yes

7706 Shadow Mountain Cir, Cheyenne, WY, US



Room Dimensions

Floor 2

Total sqft: 2049

Living area: 2049

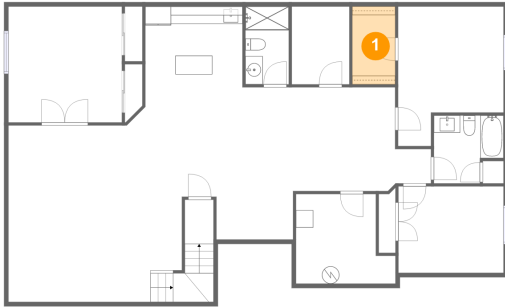
#	Room name	Dimensions	Area (sqft)	Counted as Living Area
11	Hall	13'1" x 3'9"	101 sq. ft	Yes
12	Living Room	15'8" x 19'2"	299 sq. ft	Yes
13	Kitchen	13'8" x 11'10"	154 sq. ft	Yes
14	Bath	9'2" x 4'11"	45 sq. ft	Yes
15	Wc	5'1" x 3'5"	17 sq. ft	Yes
16	Dining Area	13'8" x 9'4"	127 sq. ft	Yes
17	Primary Bedroom	15'11" x 17'5"	279 sq. ft	Yes
18	Foyer	9'2" x 8'6"	77 sq. ft	Yes
19	Laundry	5'9" x 12'7"	61 sq. ft	Yes
20	Sitting Room	11'6" x 13'7"	156 sq. ft	Yes
21	Primary Bath	11'6" x 12'1"	117 sq. ft	Yes

7706 Shadow Mountain Cir, Cheyenne, WY, US

#	Room name	Dimensions	Area (sqft)	Counted as Living Area
22	Hall	9'6" x 10'1"	32 sq. ft	Yes
23	Bedroom	12'8" x 9'8"	122 sq. ft	Yes
24	W.i.c.	14'10" x 6'8"	94 sq. ft	Yes
25	Bedroom	12'8" x 11'0"	140 sq. ft	Yes

7706 Shadow Mountain Cir, Cheyenne, WY, US

1 Floor 1 - W.i.c.



Dimensions: 4'11" x 9'0"
Area: 44 sq. ft
Counted as Living Area:
Yes

Heated: Yes
Finished: Yes
Enclosed: Yes
Contiguous:
Yes
Permitted: Yes
Wet Space: No
Addition: No
Conversion: No

2 Floor 1 - Wet Bar

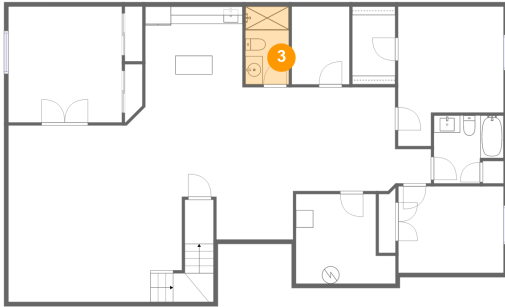


Dimensions: 11'3" x 9'4"
Area: 104 sq. ft
Counted as Living Area:
Yes

Heated: Yes
Finished: Yes
Enclosed: Yes
Contiguous:
Yes
Permitted: Yes
Wet Space: No
Addition: No
Conversion: No

7706 Shadow Mountain Cir, Cheyenne, WY, US

3 Floor 1 - Bath



Dimensions: 5'0" x 9'0"
Area: 45 sq. ft
Counted as Living Area:
Yes

Heated: Yes
Finished: Yes
Enclosed: Yes
Contiguous:
Yes
Permitted: Yes
Wet Space: Yes
Addition: No
Conversion: No

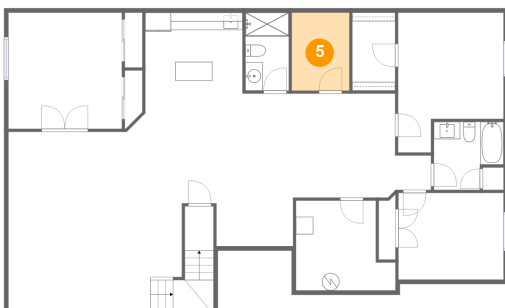
4 Floor 1 - Bedroom



Dimensions: 12'2" x 10'0"
Area: 121 sq. ft
Counted as Living Area:
Yes

Heated: Yes
Finished: Yes
Enclosed: Yes
Contiguous:
Yes
Permitted: Yes
Wet Space: No
Addition: No
Conversion: No

5 Floor 1 - Room



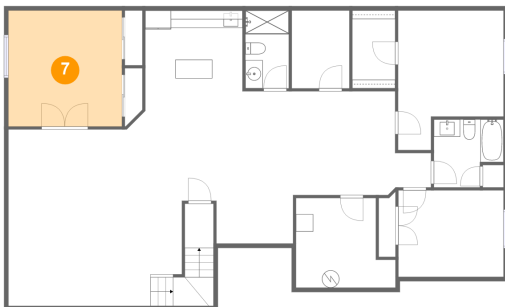
Dimensions: 6'8" x 9'0"
Area: 60 sq. ft
Counted as Living Area:
Yes

Heated: Yes
Finished: Yes
Enclosed: Yes
Contiguous:
Yes
Permitted: Yes
Wet Space: No
Addition: No
Conversion: No

7706 Shadow Mountain Cir, Cheyenne, WY, US**6 Floor 1 - Bedroom**

Dimensions: 12'2" x 16'1"
Area: 163 sq. ft
Counted as Living Area:
Yes

Heated: Yes
Finished: Yes
Enclosed: Yes
Contiguous:
Yes
Permitted: Yes
Wet Space: No
Addition: No
Conversion: No

7 Floor 1 - Bedroom

Dimensions: 13'1" x 13'4"
Area: 175 sq. ft
Counted as Living Area:
Yes

Heated: Yes
Finished: Yes
Enclosed: Yes
Contiguous:
Yes
Permitted: Yes
Wet Space: No
Addition: No
Conversion: No

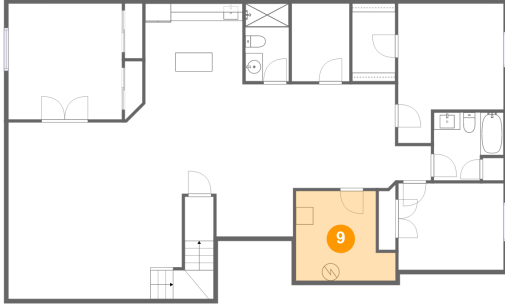
8 Floor 1 - Bath

Dimensions: 8'0" x 7'10"
Area: 55 sq. ft
Counted as Living Area:
Yes

Heated: Yes
Finished: Yes
Enclosed: Yes
Contiguous:
Yes
Permitted: Yes
Wet Space: Yes
Addition: No
Conversion: No

7706 Shadow Mountain Cir, Cheyenne, WY, US

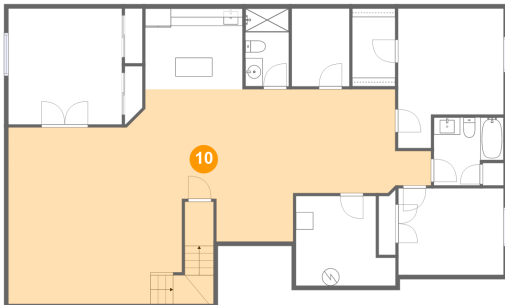
9 Floor 1 - Electrical Room



Dimensions: 11'6" x 10'4"
Area: 103 sq. ft
Counted as Living Area: No

Heated: No
Finished: No
Enclosed: Yes
Contiguous: Yes
Permitted: Yes
Wet Space: No
Addition: No
Conversion: No

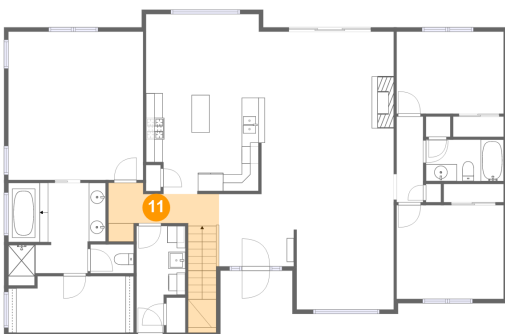
10 Floor 1 - Recreation Room



Dimensions: 48'9" x 24'9"
Area: 830 sq. ft
Counted as Living Area: Yes

Heated: Yes
Finished: Yes
Enclosed: Yes
Contiguous: Yes
Permitted: Yes
Wet Space: No
Addition: No
Conversion: No

11 Floor 2 - Hall

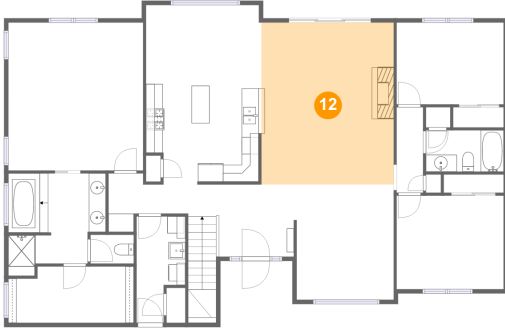


Dimensions: 13'1" x 3'9"
Area: 101 sq. ft
Counted as Living Area: Yes

Heated: Yes
Finished: Yes
Enclosed: Yes
Contiguous: Yes
Permitted: Yes
Wet Space: No
Addition: No
Conversion: No

7706 Shadow Mountain Cir, Cheyenne, WY, US

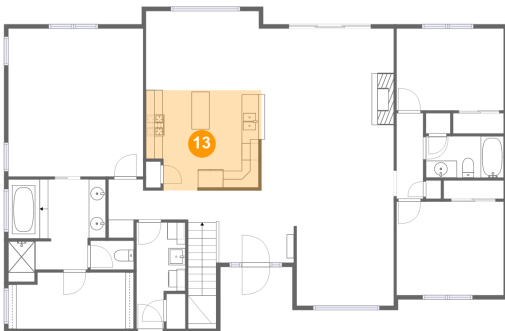
12 Floor 2 - Living Room



Dimensions: 15'8" x 19'2"
Area: 299 sq. ft
Counted as Living Area:
Yes

Heated: Yes
Finished: Yes
Enclosed: Yes
Contiguous:
Yes
Permitted: Yes
Wet Space: No
Addition: No
Conversion: No

13 Floor 2 - Kitchen



Dimensions: 13'8" x 11'10"
Area: 154 sq. ft
Counted as Living Area:
Yes

Heated: Yes
Finished: Yes
Enclosed: Yes
Contiguous:
Yes
Permitted: Yes
Wet Space: No
Addition: No
Conversion: No

14 Floor 2 - Bath

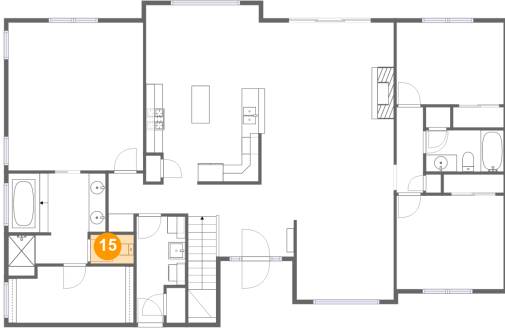


Dimensions: 9'2" x 4'11"
Area: 45 sq. ft
Counted as Living Area:
Yes

Heated: Yes
Finished: Yes
Enclosed: Yes
Contiguous:
Yes
Permitted: Yes
Wet Space: Yes
Addition: No
Conversion: No

7706 Shadow Mountain Cir, Cheyenne, WY, US

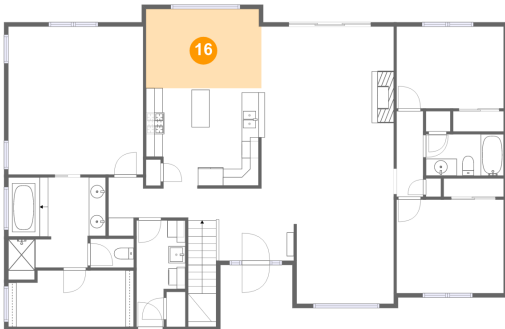
15 Floor 2 - Wc



Dimensions: 5'1" x 3'5"
Area: 17 sq. ft
Counted as Living Area:
Yes

Heated: Yes
Finished: Yes
Enclosed: Yes
Contiguous:
Yes
Permitted: Yes
Wet Space: Yes
Addition: No
Conversion: No

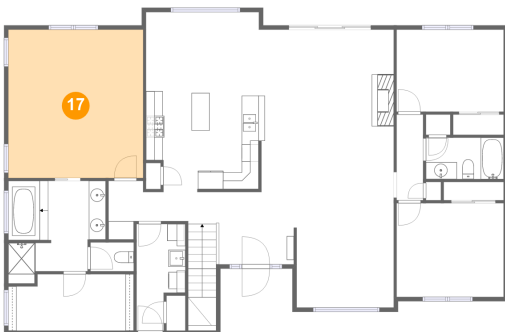
16 Floor 2 - Dining Area



Dimensions: 13'8" x 9'4"
Area: 127 sq. ft
Counted as Living Area:
Yes

Heated: Yes
Finished: Yes
Enclosed: Yes
Contiguous:
Yes
Permitted: Yes
Wet Space: No
Addition: No
Conversion: No

17 Floor 2 - Primary Bedroom

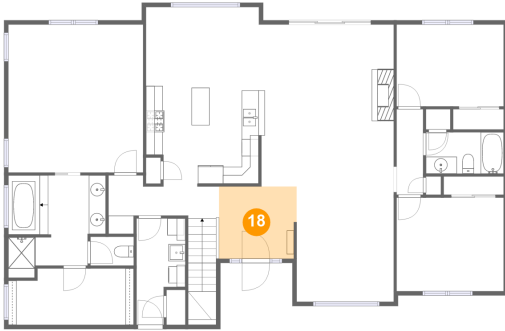


Dimensions: 15'11" x 17'5"
Area: 279 sq. ft
Counted as Living Area:
Yes

Heated: Yes
Finished: Yes
Enclosed: Yes
Contiguous:
Yes
Permitted: Yes
Wet Space: No
Addition: No
Conversion: No

7706 Shadow Mountain Cir, Cheyenne, WY, US

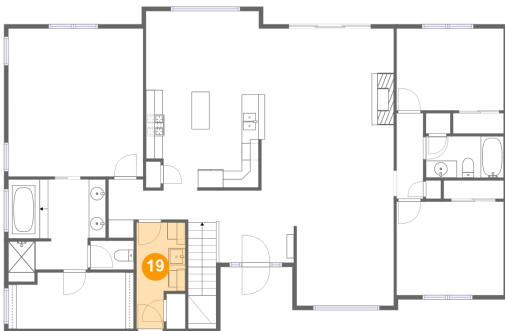
18 Floor 2 - Foyer



Dimensions: 9'2" x 8'6"
Area: 77 sq. ft
Counted as Living Area:
Yes

Heated: Yes
Finished: Yes
Enclosed: Yes
Contiguous:
Yes
Permitted: Yes
Wet Space: No
Addition: No
Conversion: No

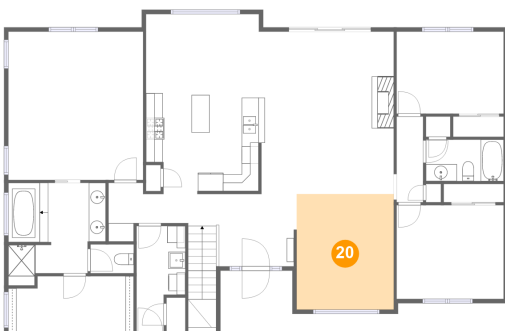
19 Floor 2 - Laundry



Dimensions: 5'9" x 12'7"
Area: 61 sq. ft
Counted as Living Area:
Yes

Heated: Yes
Finished: Yes
Enclosed: Yes
Contiguous:
Yes
Permitted: Yes
Wet Space: No
Addition: No
Conversion: No

20 Floor 2 - Sitting Room



Dimensions: 11'6" x 13'7"
Area: 156 sq. ft
Counted as Living Area:
Yes

Heated: Yes
Finished: Yes
Enclosed: Yes
Contiguous:
Yes
Permitted: Yes
Wet Space: No
Addition: No
Conversion: No

7706 Shadow Mountain Cir, Cheyenne, WY, US

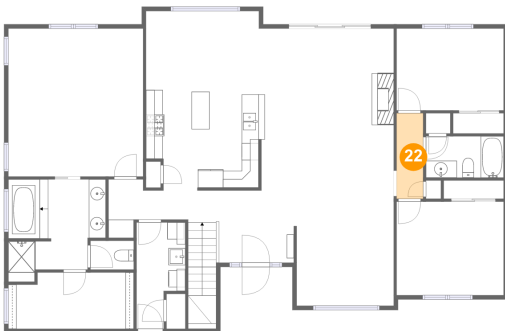
21 Floor 2 - Primary Bath



Dimensions: 11'6" x 12'1"
Area: 117 sq. ft
Counted as Living Area:
Yes

Heated: Yes
Finished: Yes
Enclosed: Yes
Contiguous:
Yes
Permitted: Yes
Wet Space: Yes
Addition: No
Conversion: No

22 Floor 2 - Hall



Dimensions: 9'6" x 10'1"
Area: 32 sq. ft
Counted as Living Area:
Yes

Heated: Yes
Finished: Yes
Enclosed: Yes
Contiguous:
Yes
Permitted: Yes
Wet Space: No
Addition: No
Conversion: No

23 Floor 2 - Bedroom

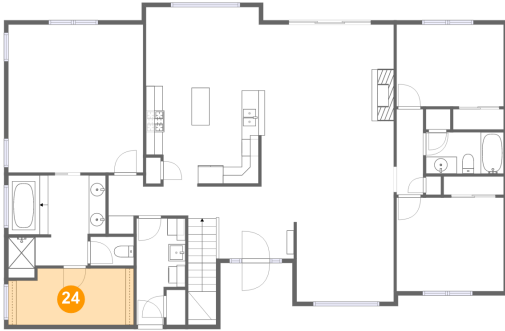


Dimensions: 12'8" x 9'8"
Area: 122 sq. ft
Counted as Living Area:
Yes

Heated: Yes
Finished: Yes
Enclosed: Yes
Contiguous:
Yes
Permitted: Yes
Wet Space: No
Addition: No
Conversion: No

7706 Shadow Mountain Cir, Cheyenne, WY, US

24 Floor 2 - W.i.c.



Dimensions: 14'10" x 6'8"
Area: 94 sq. ft
Counted as Living Area:
Yes

Heated: Yes
Finished: Yes
Enclosed: Yes
Contiguous:
Yes
Permitted: Yes
Wet Space: No
Addition: No
Conversion: No

25 Floor 2 - Bedroom



Dimensions: 12'8" x 11'0"
Area: 140 sq. ft
Counted as Living Area:
Yes

Heated: Yes
Finished: Yes
Enclosed: Yes
Contiguous:
Yes
Permitted: Yes
Wet Space: No
Addition: No
Conversion: No