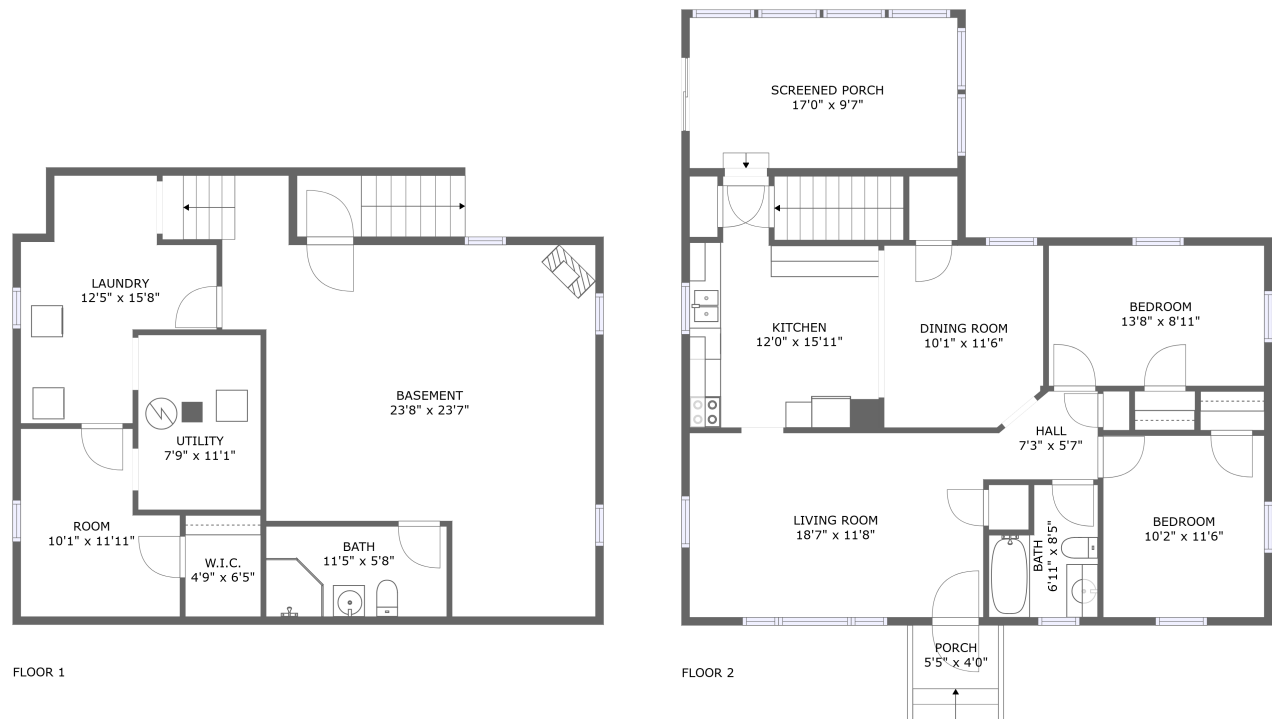


Home report

4915 Pomeroy Road Northwest, Ridgewood Park, Roanoke,
Roanoke city, Virginia, United States, 24017




Total Area: 1769 sq. ft

Below Ground: 837 sq. ft, Floor 2: 932 sq. ft

Excluded: Utility 86 sq. ft, Screened porch 162 sq. ft, Porch 22 sq. ft, Walls: 149 sq. ft

Property summary

 2 Floors

 2 Bedrooms

 2 Bathrooms

Home report

4915 Pomeroy Road Northwest, Ridgewood Park, Roanoke,
Roanoke city, Virginia, United States, 24017



Room dimensions

Floor 1 Below ground Total:837sqft Excluded: 86sqft

#		Max Dimensions	sqft	Included
1	Room	10'1" x 11'11"	104 sq. ft	Yes
2	Basement	23'8" x 23'7"	469 sq. ft	Yes
3	Utility	7'9" x 11'1"	86 sq. ft	No
4	Outdoor	4'1" x 3'11"	16 sq. ft	No
5	Laundry	12'5" x 15'8"	138 sq. ft	Yes
6	Bath	11'5" x 5'8"	65 sq. ft	Yes
7	W.I.C.	4'9" x 6'5"	31 sq. ft	Yes

4915 Pomeroy Road Northwest, Ridgewood Park, Roanoke,
Roanoke city, Virginia, United States, 24017



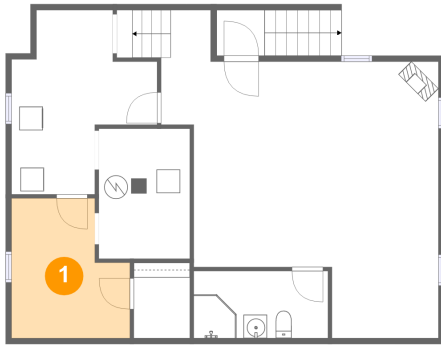
Room dimensions

Floor 2 Total:932sqft Excluded: 184sqft

#		Max Dimensions	sqft	Included
8	Kitchen	12'0" x 15'11"	152 sq. ft	Yes
9	Bedroom	10'2" x 11'6"	117 sq. ft	Yes
10	Bedroom	13'8" x 8'11"	122 sq. ft	Yes
11	Dining Room	10'1" x 11'6"	113 sq. ft	Yes
12	Living Room	18'7" x 11'8"	217 sq. ft	Yes
13	Screened Porch	17'0" x 9'7"	162 sq. ft	No
14	Hall	7'3" x 5'7"	34 sq. ft	Yes
15	Porch	5'5" x 4'0"	22 sq. ft	No
16	Bath	6'11" x 8'5"	49 sq. ft	Yes

4915 Pomeroy Road Northwest, Ridgewood Park, Roanoke,
Roanoke city, Virginia, United States, 24017

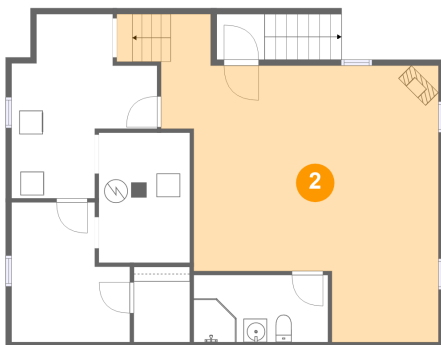
1 Floor 1 - Room



Max Dimensions: 10'1" x
11'11"
Calculated Area: 104 sq. ft
Included: Yes

Heated: Yes
Finished: Yes
Enclosed: Yes
Contiguous:
Yes
Permitted: Yes
Wet space: No
Addition: No
Conversion: No

2 Floor 1 - Basement

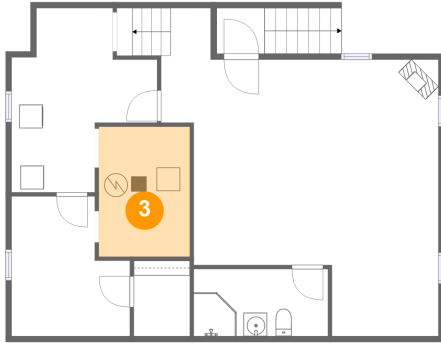


Max Dimensions: 23'8" x
23'7"
Calculated Area: 469 sq. ft
Included: Yes

Heated: Yes
Finished: Yes
Enclosed: Yes
Contiguous:
Yes
Permitted: Yes
Wet space: No
Addition: No
Conversion: No

4915 Pomeroy Road Northwest, Ridgewood Park, Roanoke,
Roanoke city, Virginia, United States, 24017

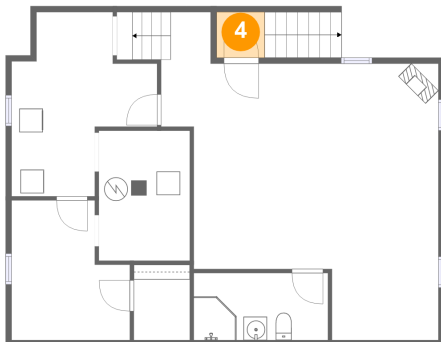
3 Floor 1 - Utility



Max Dimensions: 7'9" x 11'1"
Calculated Area: 86 sq. ft
Included: No

Heated: Yes
Finished: No
Enclosed: Yes
Contiguous: Yes
Permitted: Yes
Wet space: No
Addition: No
Conversion: No

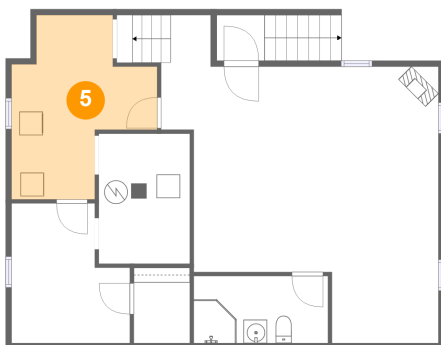
4 Floor 1 - Outdoor



Max Dimensions: 4'1" x 3'11"
Calculated Area: 16 sq. ft
Included: No

Heated: No
Finished: No
Enclosed: No
Contiguous: Yes
Permitted: No
Wet space: No
Addition: No
Conversion: No

5 Floor 1 - Laundry



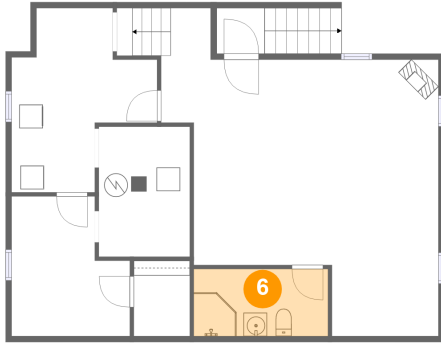
Max Dimensions: 12'5" x 15'8"
Calculated Area: 138 sq. ft
Included: Yes

Heated: Yes
Finished: Yes
Enclosed: Yes
Contiguous: Yes
Permitted: Yes
Wet space: No
Addition: No
Conversion: No

Home report

4915 Pomeroy Road Northwest, Ridgewood Park, Roanoke,
Roanoke city, Virginia, United States, 24017

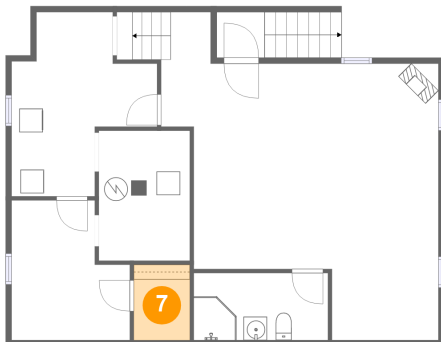
6 Floor 1 - Bath



Max Dimensions: 11'5" x 5'8"
Calculated Area: 65 sq. ft
Included: Yes

Heated: Yes
Finished: Yes
Enclosed: Yes
Contiguous: Yes
Permitted: Yes
Wet space: Yes
Addition: No
Conversion: No

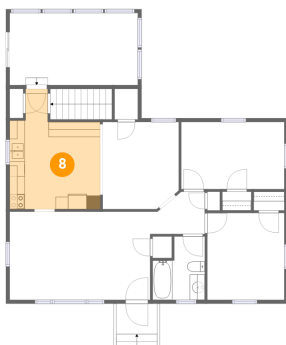
7 Floor 1 - W.I.C.



Max Dimensions: 4'9" x 6'5"
Calculated Area: 31 sq. ft
Included: Yes

Heated: Yes
Finished: Yes
Enclosed: Yes
Contiguous: Yes
Permitted: Yes
Wet space: No
Addition: No
Conversion: No

8 Floor 2 - Kitchen

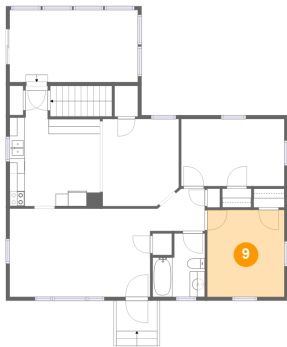


Max Dimensions: 12'0" x 15'11"
Calculated Area: 152 sq. ft
Included: Yes

Heated: Yes
Finished: Yes
Enclosed: Yes
Contiguous: Yes
Permitted: Yes
Wet space: No
Addition: No
Conversion: No

4915 Pomeroy Road Northwest, Ridgewood Park, Roanoke,
Roanoke city, Virginia, United States, 24017

9 Floor 2 - Bedroom



Max Dimensions: 10'2" x 11'6"
Calculated Area: 117 sq. ft
Included: Yes

Heated: Yes
Finished: Yes
Enclosed: Yes
Contiguous: Yes
Permitted: Yes
Wet space: No
Addition: No
Conversion: No

10 Floor 2 - Bedroom



Max Dimensions: 13'8" x 8'11"
Calculated Area: 122 sq. ft
Included: Yes

Heated: Yes
Finished: Yes
Enclosed: Yes
Contiguous: Yes
Permitted: Yes
Wet space: No
Addition: No
Conversion: No

11 Floor 2 - Dining Room

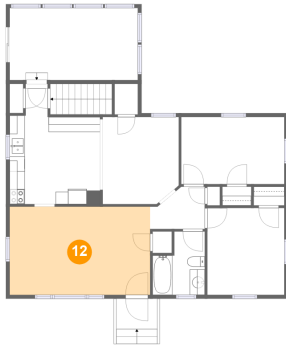


Max Dimensions: 10'1" x 11'6"
Calculated Area: 113 sq. ft
Included: Yes

Heated: Yes
Finished: Yes
Enclosed: Yes
Contiguous: Yes
Permitted: Yes
Wet space: No
Addition: No
Conversion: No

4915 Pomeroy Road Northwest, Ridgewood Park, Roanoke,
Roanoke city, Virginia, United States, 24017

12 Floor 2 - Living Room



Max Dimensions: 18'7" x 11'8"
Calculated Area: 217 sq. ft
Included: Yes

Heated: Yes
Finished: Yes
Enclosed: Yes
Contiguous: Yes
Permitted: Yes
Wet space: No
Addition: No
Conversion: No

13 Floor 2 - Screened Porch



Max Dimensions: 17'0" x 9'7"
Calculated Area: 162 sq. ft
Included: No

Heated: No
Finished: Yes
Enclosed: No
Contiguous: Yes
Permitted: Yes
Wet space: No
Addition: No
Conversion: No

14 Floor 2 - Hall



Max Dimensions: 7'3" x 5'7"
Calculated Area: 34 sq. ft
Included: Yes

Heated: Yes
Finished: Yes
Enclosed: Yes
Contiguous: Yes
Permitted: Yes
Wet space: No
Addition: No
Conversion: No

4915 Pomeroy Road Northwest, Ridgewood Park, Roanoke,
Roanoke city, Virginia, United States, 24017

15 Floor 2 - Porch



Max Dimensions: 5'5" x 4'0"
Calculated Area: 22 sq. ft
Included: No

Heated: No
Finished: Yes
Enclosed: No
Contiguous: Yes
Permitted: Yes
Wet space: No
Addition: No
Conversion: No

16 Floor 2 - Bath



Max Dimensions: 6'11" x 8'5"
Calculated Area: 49 sq. ft
Included: Yes

Heated: Yes
Finished: Yes
Enclosed: Yes
Contiguous: Yes
Permitted: Yes
Wet space: Yes
Addition: No
Conversion: No