

TOTAL: 1219 sq. ft

BELOW GROUND: 0 sq. ft, FLOOR 2: 1219 sq. ft, FLOOR 3: 0 sq. ft

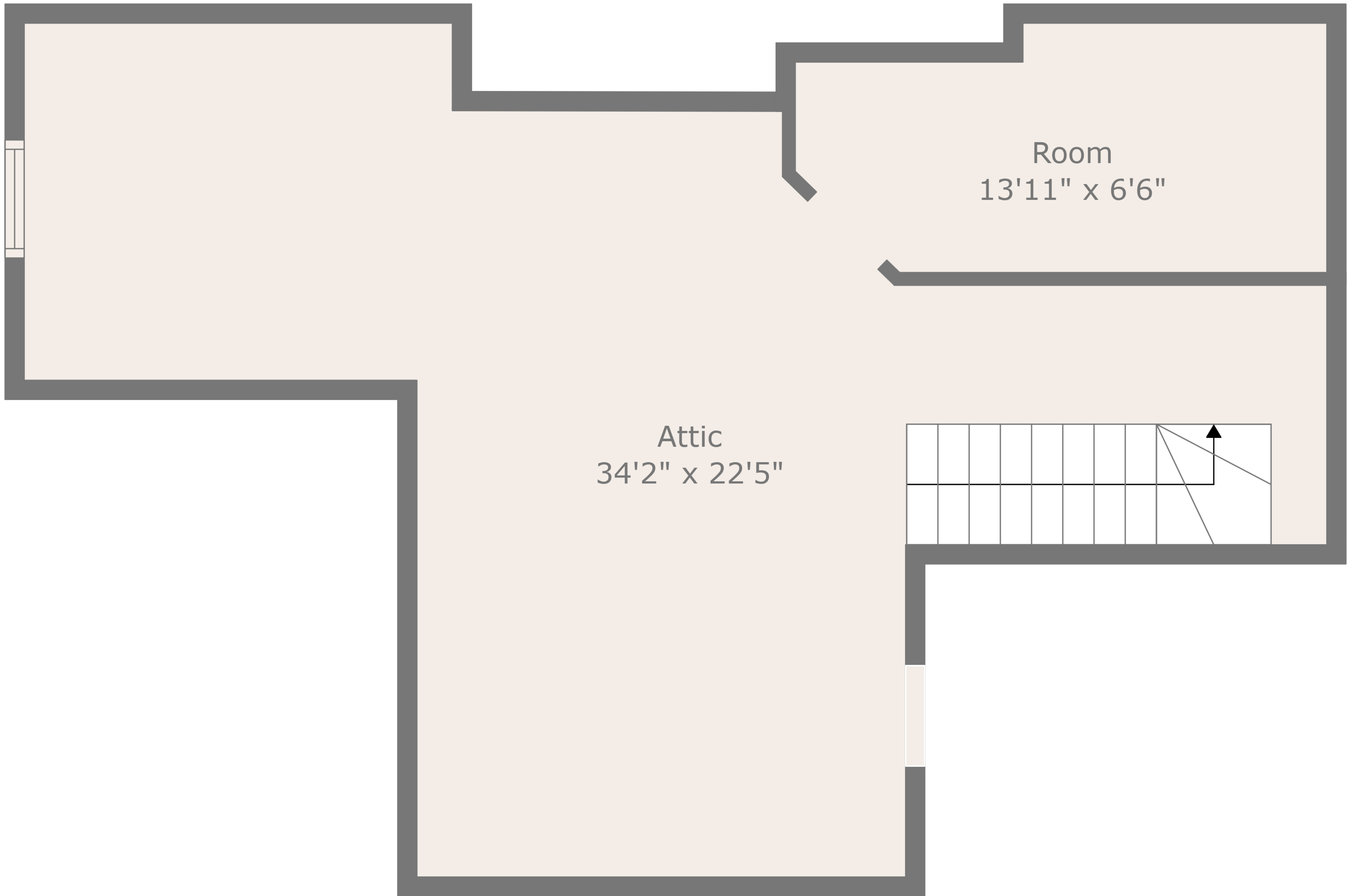
EXCLUDED AREAS: ROOM: 354 sq. ft, BASEMENT: 920 sq. ft, FIREPLACE: 13 sq. ft,
LOW CEILING: 59 sq. ft, ATTIC: 377 sq. ft



TOTAL: 1219 sq. ft

BELOW GROUND: 0 sq. ft, FLOOR 2: 1219 sq. ft, FLOOR 3: 0 sq. ft

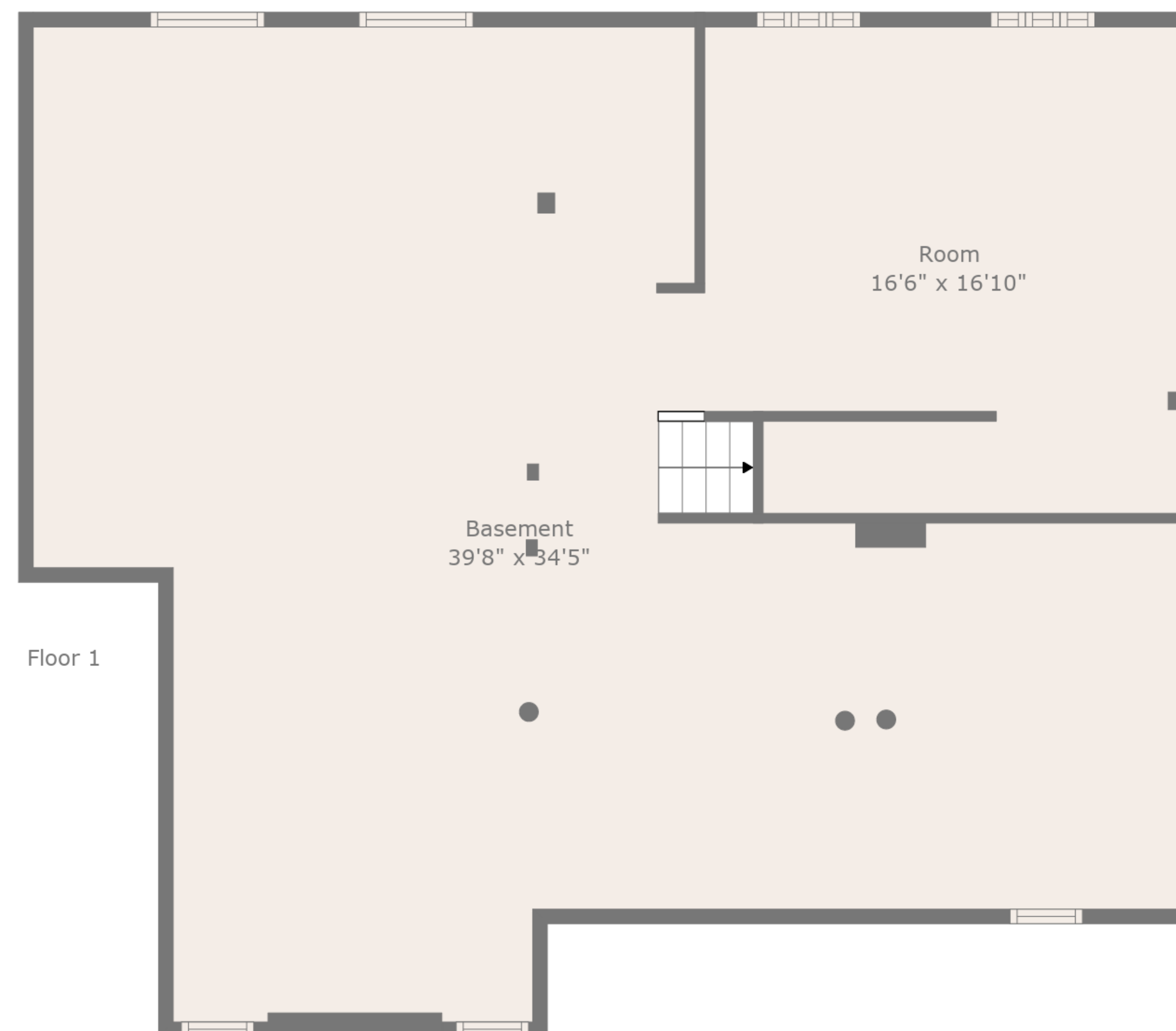
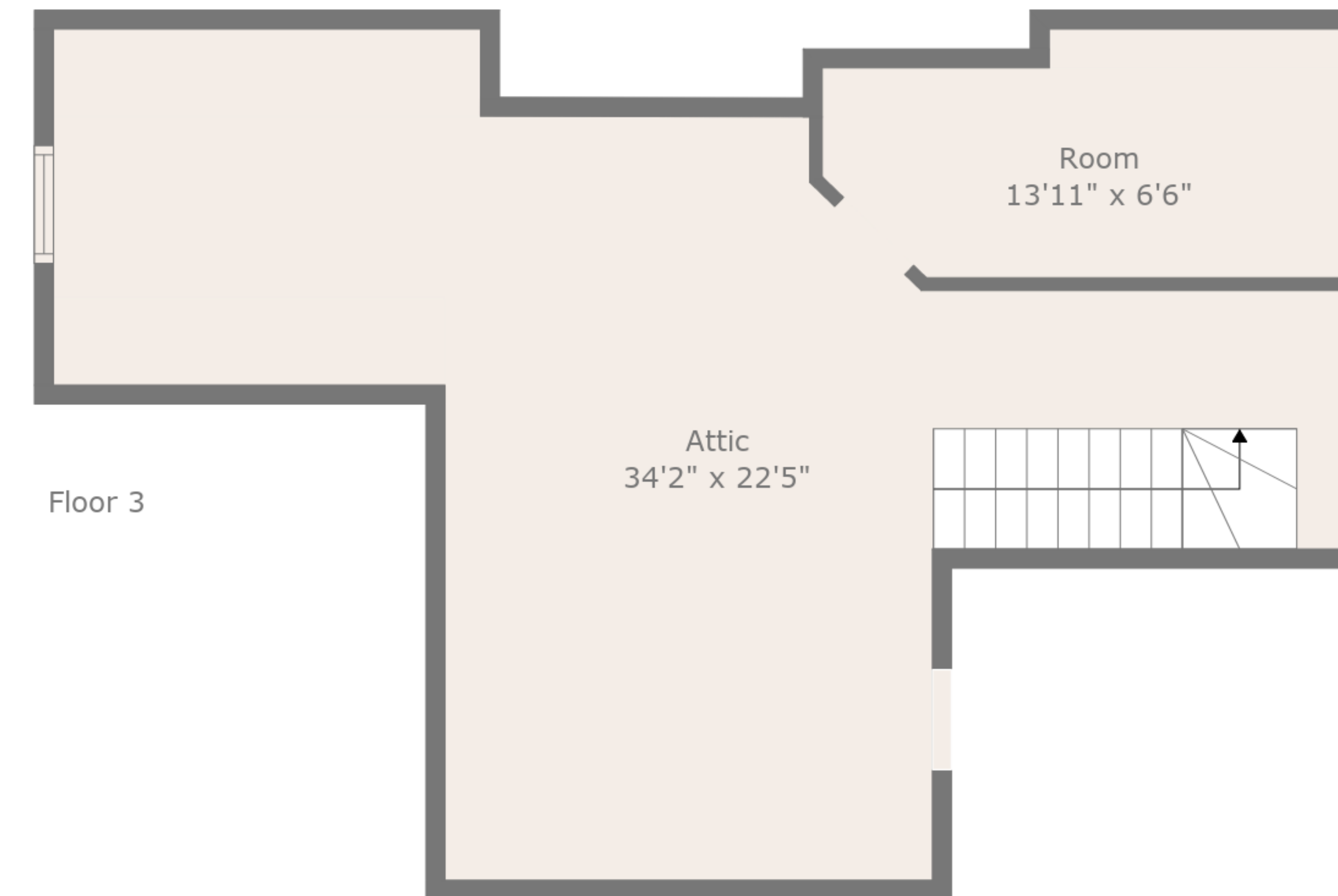
EXCLUDED AREAS: ROOM: 354 sq. ft, BASEMENT: 920 sq. ft, FIREPLACE: 13 sq. ft,
LOW CEILING: 59 sq. ft, ATTIC: 377 sq. ft



TOTAL: 1219 sq. ft

BELOW GROUND: 0 sq. ft, FLOOR 2: 1219 sq. ft, FLOOR 3: 0 sq. ft

EXCLUDED AREAS: ROOM: 354 sq. ft, BASEMENT: 920 sq. ft, FIREPLACE: 13 sq. ft,
LOW CEILING: 59 sq. ft, ATTIC: 377 sq. ft



TOTAL: 1219 sq. ft

BELOW GROUND: 0 sq. ft, FLOOR 2: 1219 sq. ft, FLOOR 3: 0 sq. ft

EXCLUDED AREAS: ROOM: 354 sq. ft, BASEMENT: 920 sq. ft, FIREPLACE: 13 sq. ft,
LOW CEILING: 59 sq. ft, ATTIC: 377 sq. ft