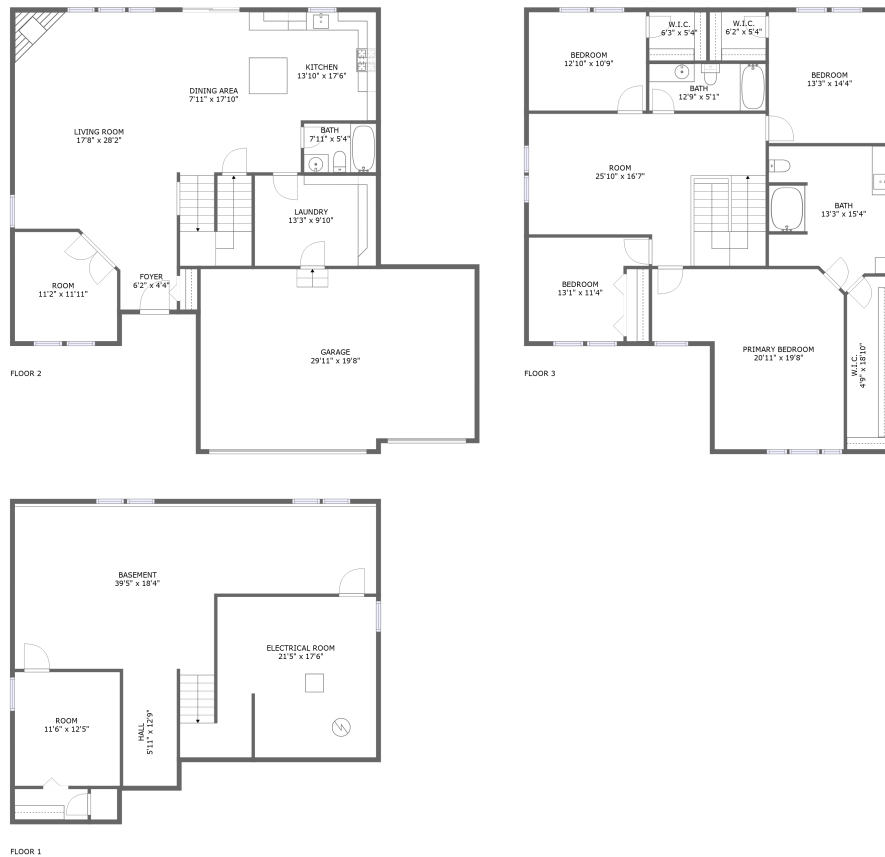



3201 Kenilworth Lane, Montgomery, Kane County, Illinois, United States, 60538



Property summary


 **1** Garages


 **4** Bedrooms

 **3** Bathrooms

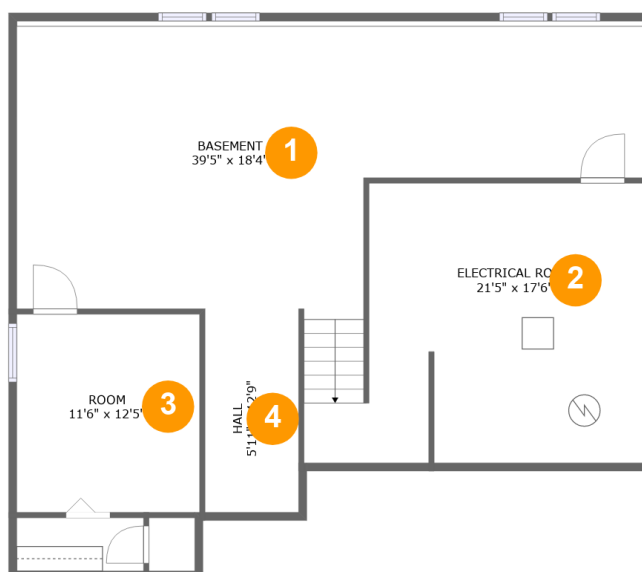
 **0** Half baths

 **3** Floors

 **3,952** Gross living area sqft

 **4,905** Total sqft

3201 Kenilworth Lane, Montgomery, Kane County, Illinois, United States, 60538



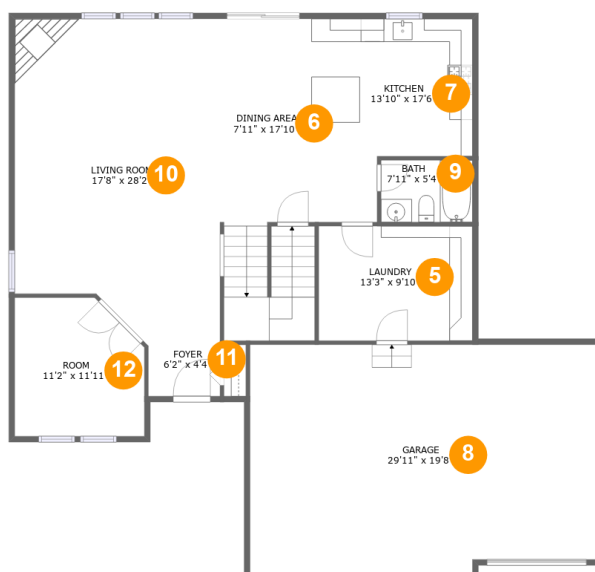
Room dimensions

Floor 1

Total sqft: 1263 Living area: 924

#		Dimensions	sqft	Counted as living area
1	Basement	39'5" x 18'4"	588 sq. ft	Yes
2	Electrical Room	21'5" x 17'6"	317 sq. ft	No
3	Room	11'6" x 12'5"	143 sq. ft	Yes
4	Hall	5'11" x 12'9"	75 sq. ft	Yes

3201 Kenilworth Lane, Montgomery, Kane County, Illinois, United States, 60538



Room dimensions

Floor 2

Total sqft: 1912 Living area: 1298

#		Dimensions	sqft	Counted as living area
5	Laundry	13'3" x 9'10"	131 sq. ft	Yes
6	Dining Area	7'11" x 17'10"	216 sq. ft	Yes
7	Kitchen	13'10" x 17'6"	196 sq. ft	Yes
8	Garage	29'11" x 19'8"	576 sq. ft	No
9	Bath	7'11" x 5'4"	42 sq. ft	Yes
10	Living Room	17'8" x 28'2"	456 sq. ft	Yes
11	Foyer	6'2" x 4'4"	27 sq. ft	Yes
12	Room	11'2" x 11'11"	124 sq. ft	Yes

3201 Kenilworth Lane, Montgomery, Kane County, Illinois, United States, 60538



Room dimensions

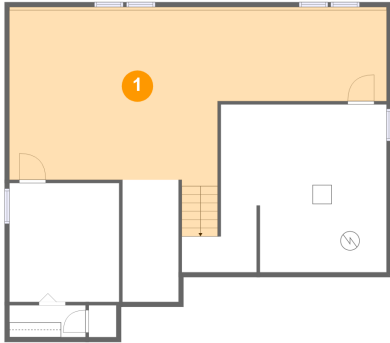
Floor 3

Total sqft: 1730 Living area: 1730

#		Dimensions	sqft	Counted as living area
13	Bedroom	13'1" x 11'4"	126 sq. ft	Yes
14	W.I.C.	6'3" x 5'4"	33 sq. ft	Yes
15	Primary Bedroom	20'11" x 19'8"	327 sq. ft	Yes
16	Bedroom	12'10" x 10'9"	138 sq. ft	Yes
17	W.I.C.	4'9" x 18'10"	87 sq. ft	Yes
18	Room	25'10" x 16'7"	383 sq. ft	Yes
19	W.I.C.	6'2" x 5'4"	33 sq. ft	Yes
20	Bath	13'3" x 15'4"	181 sq. ft	Yes
21	Bath	12'9" x 5'1"	65 sq. ft	Yes
22	Bedroom	13'3" x 14'4"	189 sq. ft	Yes

3201 Kenilworth Lane, Montgomery, Kane County, Illinois, United States, 60538

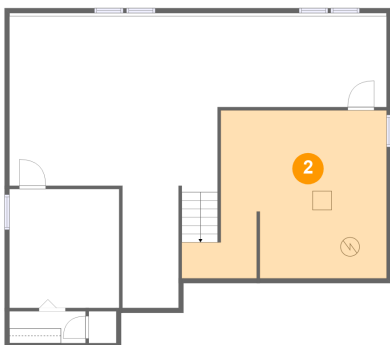
1 Floor 1 - Basement



Dimensions: 39'5" x 18'4"
Area: 588 sq. ft
Counted as living area: Yes

Heated: Yes
Finished: Yes
Enclosed: Yes
Contiguous: Yes
Permitted: Yes
Wet space: No
Addition: No
Conversion: No

2 Floor 1 - Electrical Room

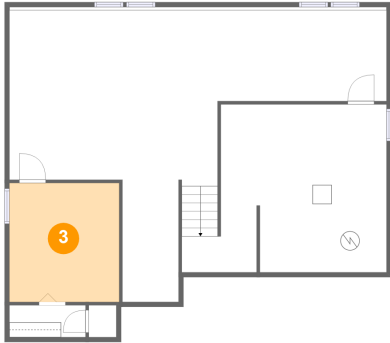


Dimensions: 21'5" x 17'6"
Area: 317 sq. ft
Counted as living area: No

Heated: No
Finished: No
Enclosed: Yes
Contiguous: Yes
Permitted: Yes
Wet space: No
Addition: No
Conversion: No

3201 Kenilworth Lane, Montgomery, Kane County, Illinois, United States, 60538

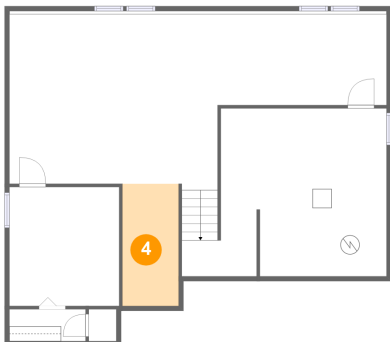
3 Floor 1 - Room



Dimensions: 11'6" x 12'5"
Area: 143 sq. ft
Counted as living area: Yes

Heated: Yes
Finished: Yes
Enclosed: Yes
Contiguous: Yes
Permitted: Yes
Wet space: No
Addition: No
Conversion: No

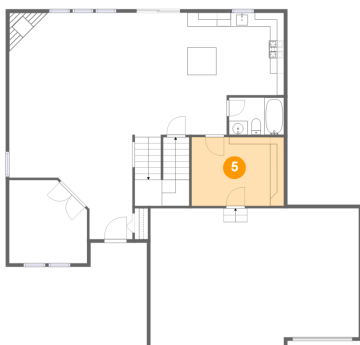
4 Floor 1 - Hall



Dimensions: 5'11" x 12'9"
Area: 75 sq. ft
Counted as living area: Yes

Heated: Yes
Finished: Yes
Enclosed: Yes
Contiguous: Yes
Permitted: Yes
Wet space: No
Addition: No
Conversion: No

5 Floor 2 - Laundry

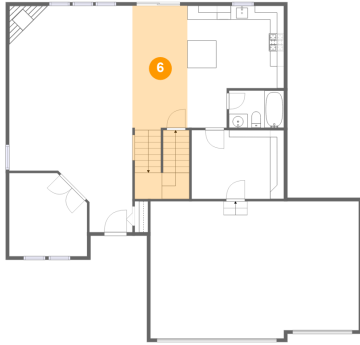


Dimensions: 13'3" x 9'10"
Area: 131 sq. ft
Counted as living area: Yes

Heated: Yes
Finished: Yes
Enclosed: Yes
Contiguous: Yes
Permitted: Yes
Wet space: No
Addition: No
Conversion: No

**3201 Kenilworth Lane, Montgomery, Kane County,
Illinois, United States, 60538**

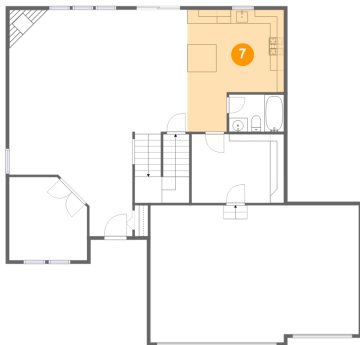
6 Floor 2 - Dining Area



Dimensions: 7'11" x 17'10"
Area: 216 sq. ft
Counted as living area: Yes

Heated: Yes
Finished: Yes
Enclosed: Yes
Contiguous: Yes
Permitted: Yes
Wet space: No
Addition: No
Conversion: No

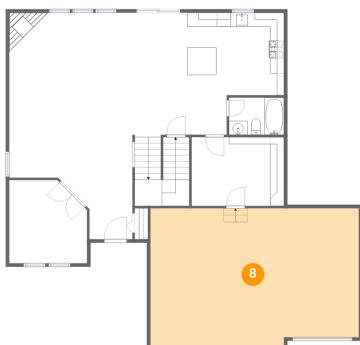
7 Floor 2 - Kitchen



Dimensions: 13'10" x 17'6"
Area: 196 sq. ft
Counted as living area: Yes

Heated: Yes
Finished: Yes
Enclosed: Yes
Contiguous: Yes
Permitted: Yes
Wet space: No
Addition: No
Conversion: No

8 Floor 2 - Garage



Dimensions: 29'11" x 19'8"
Area: 576 sq. ft
Counted as living area: No

Heated: No
Finished: No
Enclosed: Yes
Contiguous: Yes
Permitted: Yes
Wet space: No
Addition: No
Conversion: No

3201 Kenilworth Lane, Montgomery, Kane County, Illinois, United States, 60538

9 Floor 2 - Bath



Dimensions: 7'11" x 5'4"
Area: 42 sq. ft
Counted as living area: Yes

Heated: Yes
Finished: Yes
Enclosed: Yes
Contiguous: Yes
Permitted: Yes
Wet space: Yes
Addition: No
Conversion: No

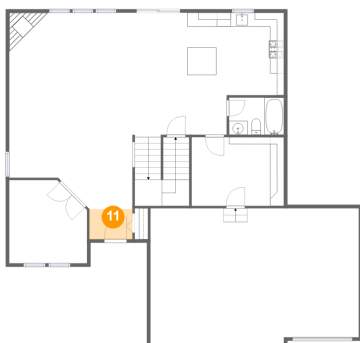
10 Floor 2 - Living Room



Dimensions: 17'8" x 28'2"
Area: 456 sq. ft
Counted as living area: Yes

Heated: Yes
Finished: Yes
Enclosed: Yes
Contiguous: Yes
Permitted: Yes
Wet space: No
Addition: No
Conversion: No

11 Floor 2 - Foyer

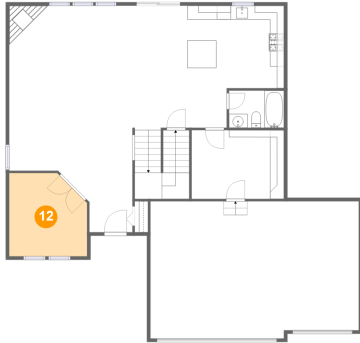


Dimensions: 6'2" x 4'4"
Area: 27 sq. ft
Counted as living area: Yes

Heated: Yes
Finished: Yes
Enclosed: Yes
Contiguous: Yes
Permitted: Yes
Wet space: No
Addition: No
Conversion: No

**3201 Kenilworth Lane, Montgomery, Kane County,
Illinois, United States, 60538**

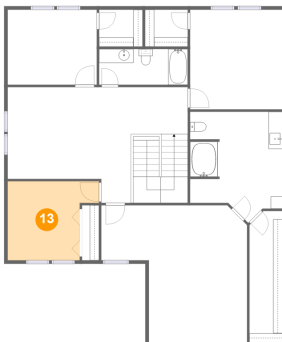
12 Floor 2 - Room



Dimensions: 11'2" x 11'11"
Area: 124 sq. ft
Counted as living area: Yes

Heated: Yes
Finished: Yes
Enclosed: Yes
Contiguous: Yes
Permitted: Yes
Wet space: No
Addition: No
Conversion: No

13 Floor 3 - Bedroom



Dimensions: 13'1" x 11'4"
Area: 126 sq. ft
Counted as living area: Yes

Heated: Yes
Finished: Yes
Enclosed: Yes
Contiguous: Yes
Permitted: Yes
Wet space: No
Addition: No
Conversion: No

14 Floor 3 - W.I.C.

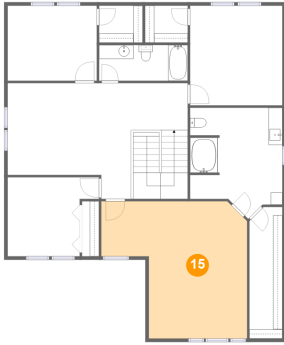


Dimensions: 6'3" x 5'4"
Area: 33 sq. ft
Counted as living area: Yes

Heated: Yes
Finished: Yes
Enclosed: Yes
Contiguous: Yes
Permitted: Yes
Wet space: No
Addition: No
Conversion: No

3201 Kenilworth Lane, Montgomery, Kane County, Illinois, United States, 60538

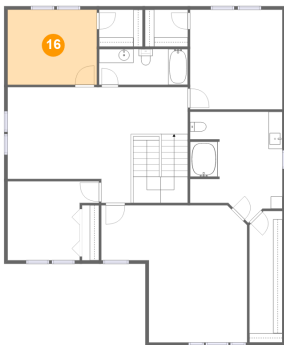
15 Floor 3 - Primary Bedroom



Dimensions: 20'11" x 19'8"
Area: 327 sq. ft
Counted as living area: Yes

Heated: Yes
Finished: Yes
Enclosed: Yes
Contiguous: Yes
Permitted: Yes
Wet space: No
Addition: No
Conversion: No

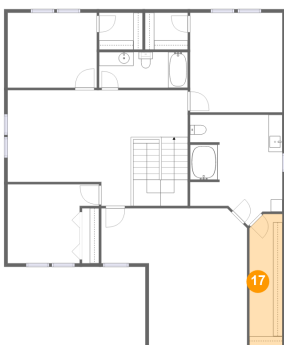
16 Floor 3 - Bedroom



Dimensions: 12'10" x 10'9"
Area: 138 sq. ft
Counted as living area: Yes

Heated: Yes
Finished: Yes
Enclosed: Yes
Contiguous: Yes
Permitted: Yes
Wet space: No
Addition: No
Conversion: No

17 Floor 3 - W.I.C.

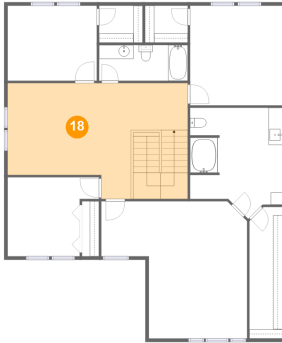


Dimensions: 4'9" x 18'10"
Area: 87 sq. ft
Counted as living area: Yes

Heated: Yes
Finished: Yes
Enclosed: Yes
Contiguous: Yes
Permitted: Yes
Wet space: No
Addition: No
Conversion: No

**3201 Kenilworth Lane, Montgomery, Kane County,
Illinois, United States, 60538**

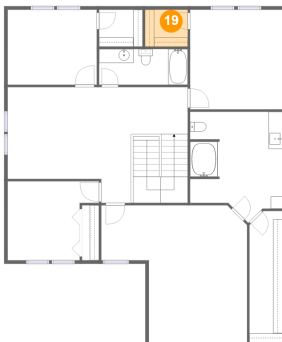
18 Floor 3 - Room



Dimensions: 25'10" x 16'7"
Area: 383 sq. ft
Counted as living area: Yes

Heated: Yes
Finished: Yes
Enclosed: Yes
Contiguous: Yes
Permitted: Yes
Wet space: No
Addition: No
Conversion: No

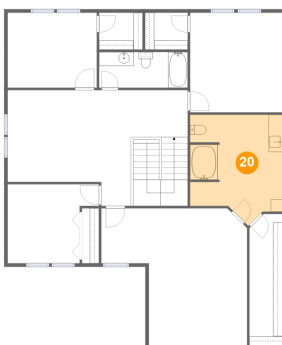
19 Floor 3 - W.I.C.



Dimensions: 6'2" x 5'4"
Area: 33 sq. ft
Counted as living area: Yes

Heated: Yes
Finished: Yes
Enclosed: Yes
Contiguous: Yes
Permitted: Yes
Wet space: No
Addition: No
Conversion: No

20 Floor 3 - Bath

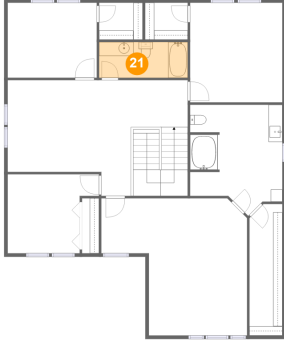


Dimensions: 13'3" x 15'4"
Area: 181 sq. ft
Counted as living area: Yes

Heated: Yes
Finished: Yes
Enclosed: Yes
Contiguous: Yes
Permitted: Yes
Wet space: Yes
Addition: No
Conversion: No

**3201 Kenilworth Lane, Montgomery, Kane County,
Illinois, United States, 60538**

21 Floor 3 - Bath



Dimensions: 12'9" x 5'1"
Area: 65 sq. ft
Counted as living area: Yes

Heated: Yes
Finished: Yes
Enclosed: Yes
Contiguous: Yes
Permitted: Yes
Wet space: Yes
Addition: No
Conversion: No

22 Floor 3 - Bedroom



Dimensions: 13'3" x 14'4"
Area: 189 sq. ft
Counted as living area: Yes

Heated: Yes
Finished: Yes
Enclosed: Yes
Contiguous: Yes
Permitted: Yes
Wet space: No
Addition: No
Conversion: No