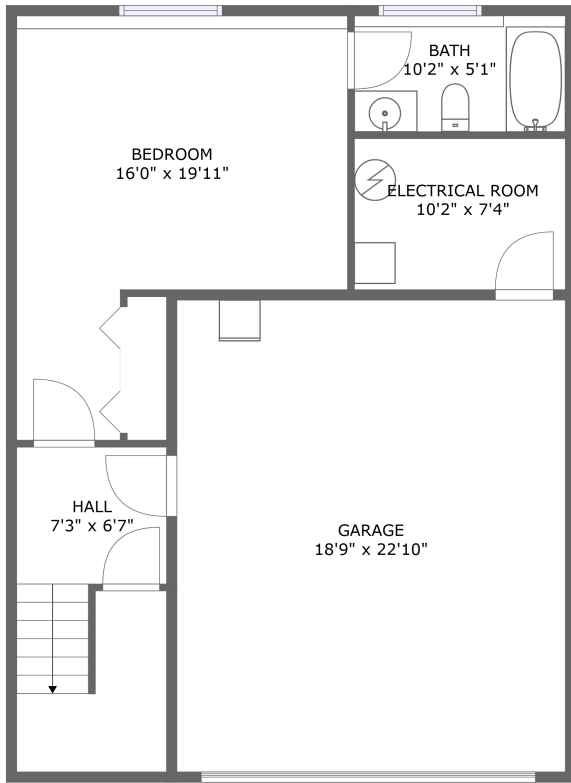
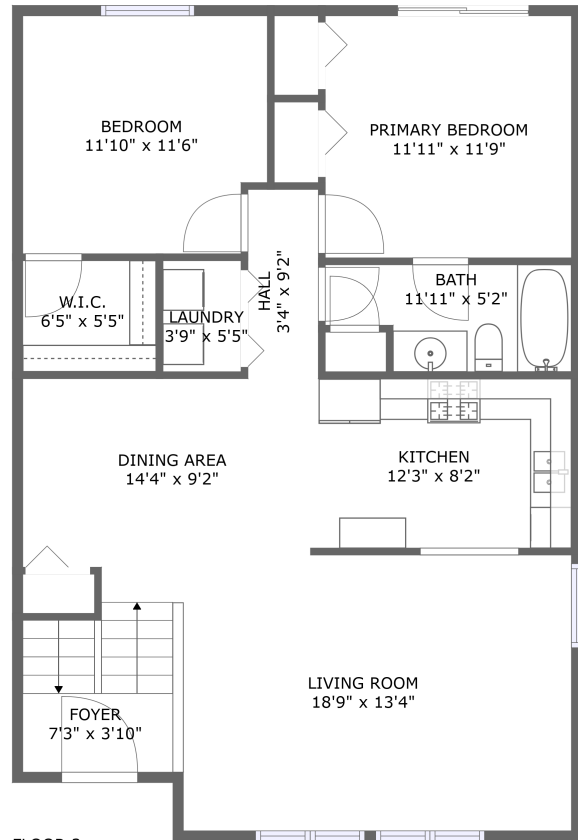


318 Summit St, Belle Fourche, SD, US




FLOOR 1



FLOOR 2

Property summary

 **1** Garages

 **3** Bedrooms

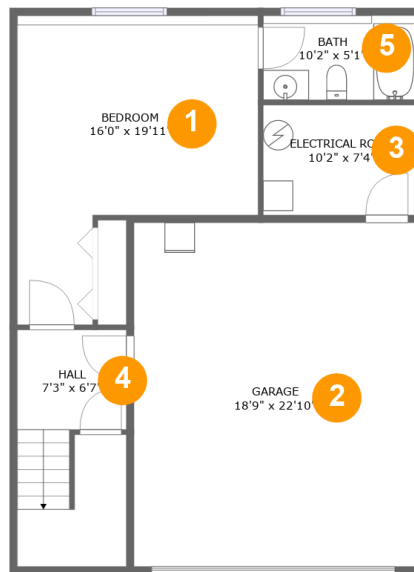
 **2** Bathrooms

 **0** Half baths

 **2** Floors

 **1,593** Gross living area sqft

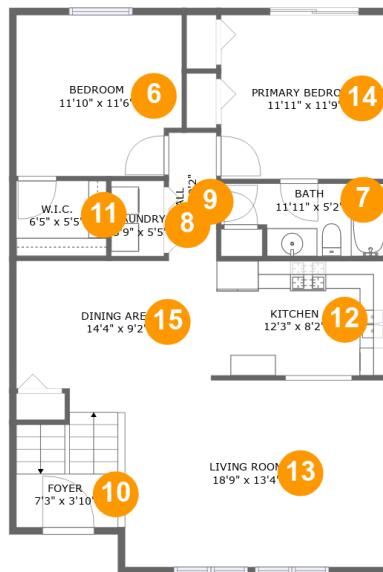
 **2,126** Total sqft

318 Summit St,Belle Fourche,SD,US**Room dimensions**

Floor 1

Total sqft: 1034 Living area: 501

| # | | Dimensions | sqft | Counted as living area |
|---|-----------------|----------------|------------|------------------------|
| 1 | Bedroom | 16'0" x 19'11" | 249 sq. ft | Yes |
| 2 | Garage | 18'9" x 22'10" | 429 sq. ft | No |
| 3 | Electrical Room | 10'2" x 7'4" | 75 sq. ft | No |
| 4 | Hall | 7'3" x 6'7" | 111 sq. ft | Yes |
| 5 | Bath | 10'2" x 5'1" | 57 sq. ft | Yes |

318 Summit St, Belle Fourche, SD, US**Room dimensions**

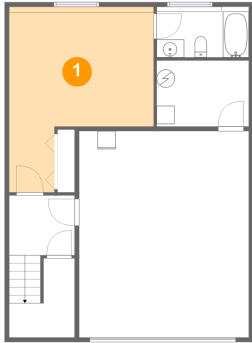
Floor 2

Total sqft: 1092 Living area: 1092

| # | | Dimensions | sqft | Counted as living area |
|----|-----------------|----------------|------------|------------------------|
| 6 | Bedroom | 11'10" x 11'6" | 132 sq. ft | Yes |
| 7 | Bath | 11'11" x 5'2" | 54 sq. ft | Yes |
| 8 | Laundry | 3'9" x 5'5" | 20 sq. ft | Yes |
| 9 | Hall | 3'4" x 9'2" | 31 sq. ft | Yes |
| 10 | Foyer | 7'3" x 3'10" | 67 sq. ft | Yes |
| 11 | W.I.C. | 6'5" x 5'5" | 35 sq. ft | Yes |
| 12 | Kitchen | 12'3" x 8'2" | 104 sq. ft | Yes |
| 13 | Living Room | 18'9" x 13'4" | 247 sq. ft | Yes |
| 14 | Primary Bedroom | 11'11" x 11'9" | 139 sq. ft | Yes |
| 15 | Dining Area | 14'4" x 9'2" | 130 sq. ft | Yes |

318 Summit St, Belle Fourche, SD, US

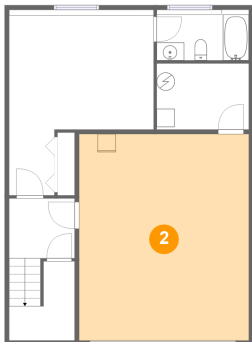
1 Floor 1 - Bedroom



Dimensions: 16'0" x 19'11"
Area: 249 sq. ft
Counted as living area: Yes

Heated: Yes
Finished: Yes
Enclosed: Yes
Contiguous: Yes
Permitted: Yes
Wet space: No
Addition: No
Conversion: No

2 Floor 1 - Garage

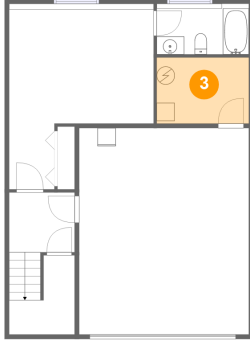


Dimensions: 18'9" x 22'10"
Area: 429 sq. ft
Counted as living area: No

Heated: No
Finished: No
Enclosed: Yes
Contiguous: Yes
Permitted: Yes
Wet space: No
Addition: No
Conversion: No

318 Summit St, Belle Fourche, SD, US

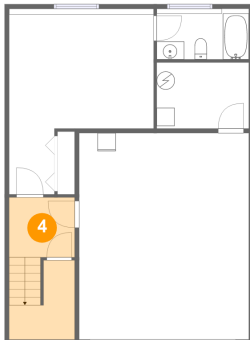
3 Floor 1 - Electrical Room



Dimensions: 10'2" x 7'4"
Area: 75 sq. ft
Counted as living area: No

Heated: No
Finished: No
Enclosed: Yes
Contiguous: Yes
Permitted: Yes
Wet space: No
Addition: No
Conversion: No

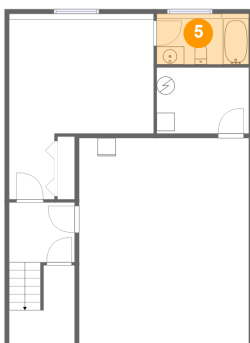
4 Floor 1 - Hall



Dimensions: 7'3" x 6'7"
Area: 111 sq. ft
Counted as living area: Yes

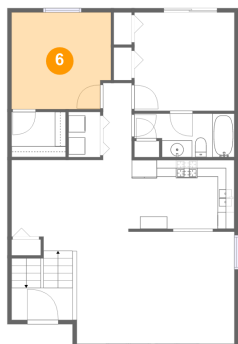
Heated: Yes
Finished: Yes
Enclosed: Yes
Contiguous: Yes
Permitted: Yes
Wet space: No
Addition: No
Conversion: No

5 Floor 1 - Bath



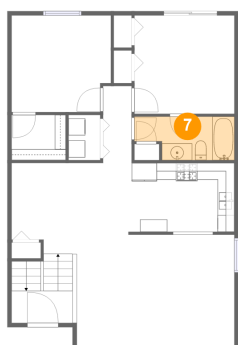
Dimensions: 10'2" x 5'1"
Area: 57 sq. ft
Counted as living area: Yes

Heated: Yes
Finished: Yes
Enclosed: Yes
Contiguous: Yes
Permitted: Yes
Wet space: Yes
Addition: No
Conversion: No

318 Summit St, Belle Fourche, SD, US**6 Floor 2 - Bedroom**

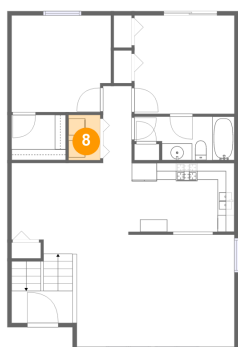
Dimensions: 11'10" x 11'6"
Area: 132 sq. ft
Counted as living area: Yes

Heated: Yes
Finished: Yes
Enclosed: Yes
Contiguous: Yes
Permitted: Yes
Wet space: No
Addition: No
Conversion: No

7 Floor 2 - Bath

Dimensions: 11'11" x 5'2"
Area: 54 sq. ft
Counted as living area: Yes

Heated: Yes
Finished: Yes
Enclosed: Yes
Contiguous: Yes
Permitted: Yes
Wet space: Yes
Addition: No
Conversion: No

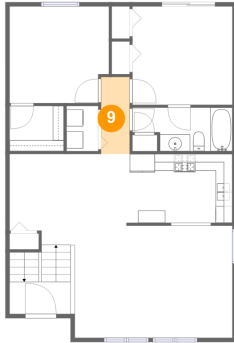
8 Floor 2 - Laundry

Dimensions: 3'9" x 5'5"
Area: 20 sq. ft
Counted as living area: Yes

Heated: Yes
Finished: Yes
Enclosed: Yes
Contiguous: Yes
Permitted: Yes
Wet space: No
Addition: No
Conversion: No

318 Summit St, Belle Fourche, SD, US

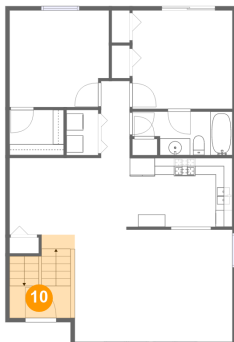
9 Floor 2 - Hall



Dimensions: 3'4" x 9'2"
Area: 31 sq. ft
Counted as living area: Yes

Heated: Yes
Finished: Yes
Enclosed: Yes
Contiguous: Yes
Permitted: Yes
Wet space: No
Addition: No
Conversion: No

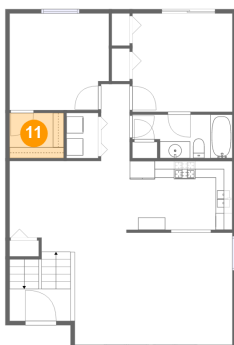
10 Floor 2 - Foyer



Dimensions: 7'3" x 3'10"
Area: 67 sq. ft
Counted as living area: Yes

Heated: Yes
Finished: Yes
Enclosed: Yes
Contiguous: Yes
Permitted: Yes
Wet space: No
Addition: No
Conversion: No

11 Floor 2 - W.I.C.

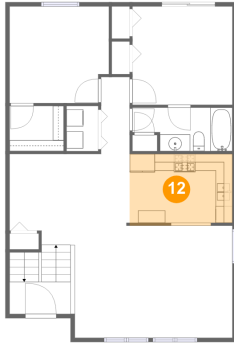


Dimensions: 6'5" x 5'5"
Area: 35 sq. ft
Counted as living area: Yes

Heated: Yes
Finished: Yes
Enclosed: Yes
Contiguous: Yes
Permitted: Yes
Wet space: No
Addition: No
Conversion: No

318 Summit St, Belle Fourche, SD, US

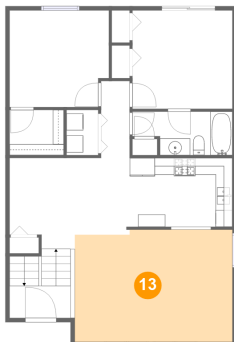
12 Floor 2 - Kitchen



Dimensions: 12'3" x 8'2"
Area: 104 sq. ft
Counted as living area: Yes

Heated: Yes
Finished: Yes
Enclosed: Yes
Contiguous: Yes
Permitted: Yes
Wet space: No
Addition: No
Conversion: No

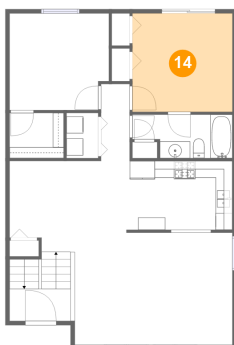
13 Floor 2 - Living Room



Dimensions: 18'9" x 13'4"
Area: 247 sq. ft
Counted as living area: Yes

Heated: Yes
Finished: Yes
Enclosed: Yes
Contiguous: Yes
Permitted: Yes
Wet space: No
Addition: No
Conversion: No

14 Floor 2 - Primary Bedroom

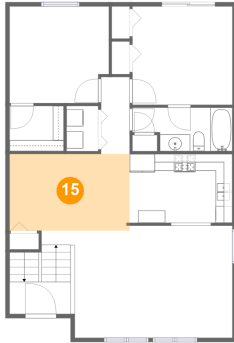


Dimensions: 11'11" x 11'9"
Area: 139 sq. ft
Counted as living area: Yes

Heated: Yes
Finished: Yes
Enclosed: Yes
Contiguous: Yes
Permitted: Yes
Wet space: No
Addition: No
Conversion: No

318 Summit St, Belle Fourche, SD, US

15 Floor 2 - Dining Area



Dimensions: 14'4" x 9'2"
Area: 130 sq. ft
Counted as living area: Yes

Heated: Yes
Finished: Yes
Enclosed: Yes
Contiguous: Yes
Permitted: Yes
Wet space: No
Addition: No
Conversion: No