

Home report

15 Culham Street, College Park, Oakville, Halton County,
Ontario, Canada, L6H 1G3



Total Area: 2201 sq. ft

Below Ground: 0 sq. ft, Floor 2: 1042 sq. ft, Floor 3: 1159 sq. ft

Excluded: Basement 1027 sq. ft, Garage 357 sq. ft

Property summary

 **3** Floors

 **4** Bedrooms

 **2** Bathrooms

Home report

**15 Culham Street, College Park, Oakville, Halton County,
Ontario, Canada, L6H 1G3**



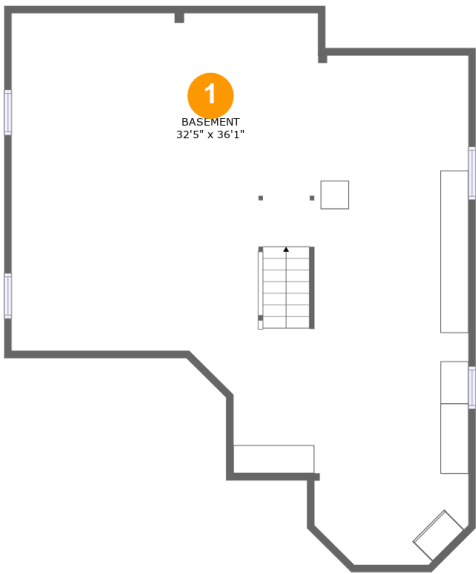
1
Half baths



1
Garages

Home report

15 Culham Street, College Park, Oakville, Halton County,
Ontario, Canada, L6H 1G3



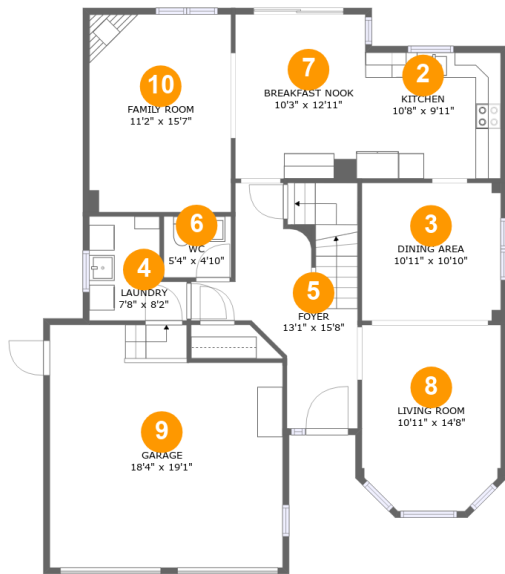
Room dimensions

Floor 1 Below ground Total:0sqft Excluded: 1027sqft

#		Max Dimensions	sqft	Included
1	Basement	32'5" x 36'1"	957 sq. ft	No

Home report

15 Culham Street, College Park, Oakville, Halton County,
Ontario, Canada, L6H 1G3



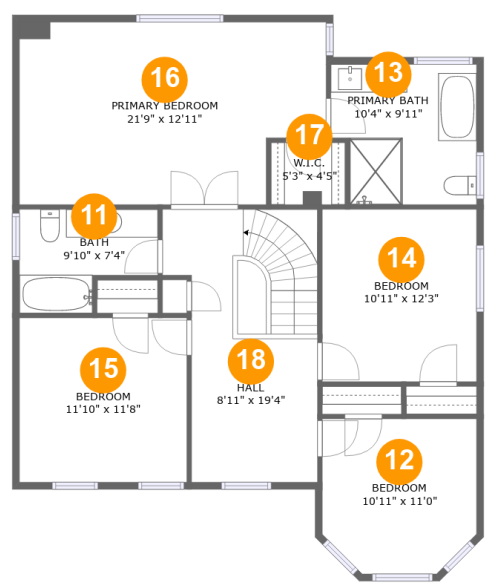
Room dimensions

Floor 2 Total:1042sqft Excluded: 357sqft

#		Max Dimensions	sqft	Included
2	Kitchen	10'8" x 9'11"	106 sq. ft	Yes
3	Dining Area	10'11" x 10'10"	119 sq. ft	Yes
4	Laundry	7'8" x 8'2"	52 sq. ft	Yes
5	Foyer	13'1" x 15'8"	163 sq. ft	Yes
6	WC	5'4" x 4'10"	25 sq. ft	Yes
7	Breakfast Nook	10'3" x 12'11"	133 sq. ft	Yes
8	Living Room	10'11" x 14'8"	152 sq. ft	Yes
9	Garage	18'4" x 19'1"	328 sq. ft	No
10	Family Room	11'2" x 15'7"	174 sq. ft	Yes

Home report

15 Culham Street, College Park, Oakville, Halton County,
Ontario, Canada, L6H 1G3



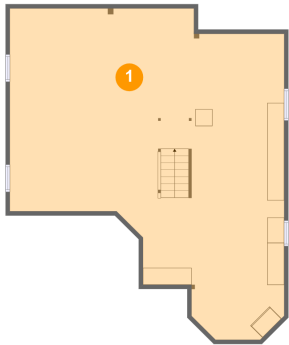
Room dimensions

Floor 3 Total:1159sqft Excluded: 0sqft

#		Max Dimensions	sqft	Included
11	Bath	9'10" x 7'4"	60 sq. ft	Yes
12	Bedroom	10'11" x 11'0"	112 sq. ft	Yes
13	Primary Bath	10'4" x 9'11"	96 sq. ft	Yes
14	Bedroom	10'11" x 12'3"	134 sq. ft	Yes
15	Bedroom	11'10" x 11'8"	138 sq. ft	Yes
16	Primary Bedroom	21'9" x 12'11"	261 sq. ft	Yes
17	W.I.C.	5'3" x 4'5"	23 sq. ft	Yes
18	Hall	8'11" x 19'4"	182 sq. ft	Yes

15 Culham Street, College Park, Oakville, Halton County,
Ontario, Canada, L6H 1G3

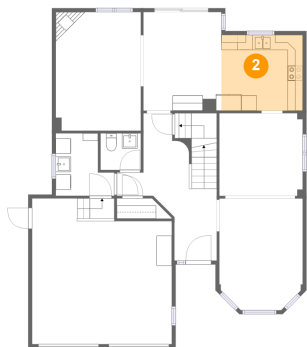
1 Floor 1 - Basement



Max Dimensions: 32'5" x 36'1"
Calculated Area: 957 sq. ft
Included: No

Heated: Yes
Finished: No
Enclosed: Yes
Contiguous: Yes
Permitted: Yes
Wet space: No
Addition: No
Conversion: No

2 Floor 2 - Kitchen



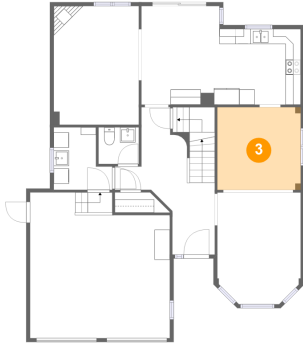
Max Dimensions: 10'8" x 9'11"
Calculated Area: 106 sq. ft
Included: Yes

Heated: Yes
Finished: Yes
Enclosed: Yes
Contiguous: Yes
Permitted: Yes
Wet space: No
Addition: No
Conversion: No

Home report

15 Culham Street, College Park, Oakville, Halton County,
Ontario, Canada, L6H 1G3

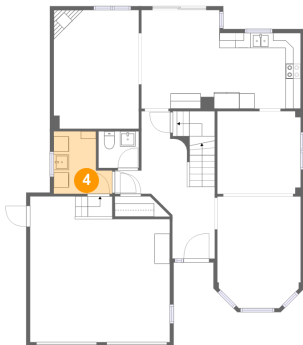
3 Floor 2 - Dining Area



Max Dimensions: 10'11" x 10'10"
Calculated Area: 119 sq. ft
Included: Yes

Heated: Yes
Finished: Yes
Enclosed: Yes
Contiguous: Yes
Permitted: Yes
Wet space: No
Addition: No
Conversion: No

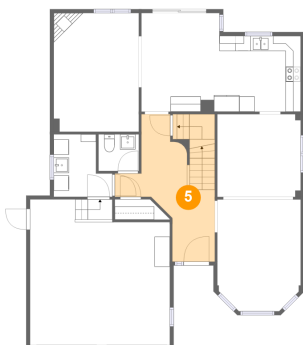
4 Floor 2 - Laundry



Max Dimensions: 7'8" x 8'2"
Calculated Area: 52 sq. ft
Included: Yes

Heated: Yes
Finished: Yes
Enclosed: Yes
Contiguous: Yes
Permitted: Yes
Wet space: No
Addition: No
Conversion: No

5 Floor 2 - Foyer

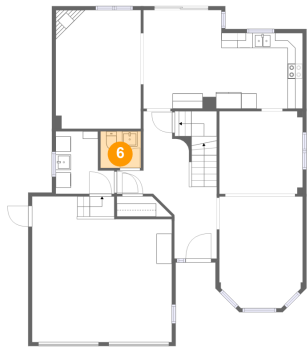


Max Dimensions: 13'1" x 15'8"
Calculated Area: 163 sq. ft
Included: Yes

Heated: Yes
Finished: Yes
Enclosed: Yes
Contiguous: Yes
Permitted: Yes
Wet space: No
Addition: No
Conversion: No

15 Culham Street, College Park, Oakville, Halton County,
Ontario, Canada, L6H 1G3

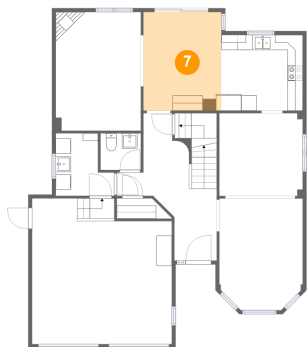
6 Floor 2 - WC



Max Dimensions: 5'4" x 4'10"
Calculated Area: 25 sq. ft
Included: Yes

Heated: Yes
Finished: Yes
Enclosed: Yes
Contiguous: Yes
Permitted: Yes
Wet space: Yes
Addition: No
Conversion: No

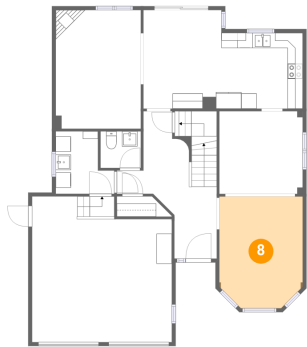
7 Floor 2 - Breakfast Nook



Max Dimensions: 10'3" x 12'11"
Calculated Area: 133 sq. ft
Included: Yes

Heated: Yes
Finished: Yes
Enclosed: Yes
Contiguous: Yes
Permitted: Yes
Wet space: No
Addition: No
Conversion: No

8 Floor 2 - Living Room

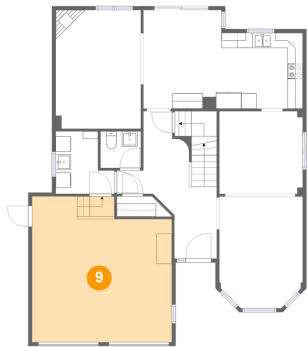


Max Dimensions: 10'11" x 14'8"
Calculated Area: 152 sq. ft
Included: Yes

Heated: Yes
Finished: Yes
Enclosed: Yes
Contiguous: Yes
Permitted: Yes
Wet space: No
Addition: No
Conversion: No

15 Culham Street, College Park, Oakville, Halton County,
Ontario, Canada, L6H 1G3

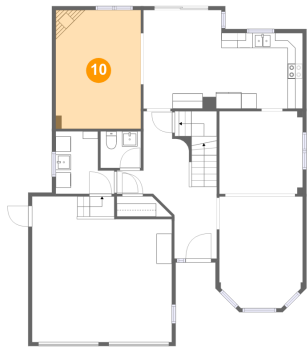
9 Floor 2 - Garage



Max Dimensions: 18'4" x 19'1"
Calculated Area: 328 sq. ft
Included: No

Heated: No
Finished: No
Enclosed: Yes
Contiguous: Yes
Permitted: Yes
Wet space: No
Addition: No
Conversion: No

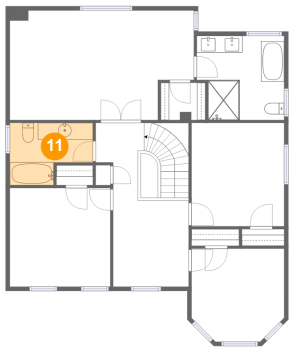
10 Floor 2 - Family Room



Max Dimensions: 11'2" x 15'7"
Calculated Area: 174 sq. ft
Included: Yes

Heated: Yes
Finished: Yes
Enclosed: Yes
Contiguous: Yes
Permitted: Yes
Wet space: No
Addition: No
Conversion: No

11 Floor 3 - Bath



Max Dimensions: 9'10" x 7'4"
Calculated Area: 60 sq. ft
Included: Yes

Heated: Yes
Finished: Yes
Enclosed: Yes
Contiguous: Yes
Permitted: Yes
Wet space: Yes
Addition: No
Conversion: No

15 Culham Street, College Park, Oakville, Halton County,
Ontario, Canada, L6H 1G3

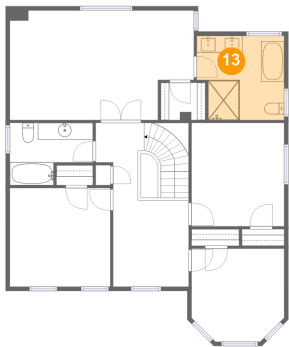
12 Floor 3 - Bedroom



Max Dimensions: 10'11" x 11'0"
Calculated Area: 112 sq. ft
Included: Yes

Heated: Yes
Finished: Yes
Enclosed: Yes
Contiguous: Yes
Permitted: Yes
Wet space: No
Addition: No
Conversion: No

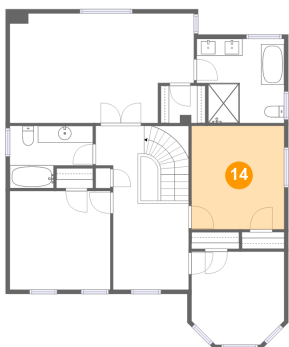
13 Floor 3 - Primary Bath



Max Dimensions: 10'4" x 9'11"
Calculated Area: 96 sq. ft
Included: Yes

Heated: Yes
Finished: Yes
Enclosed: Yes
Contiguous: Yes
Permitted: Yes
Wet space: Yes
Addition: No
Conversion: No

14 Floor 3 - Bedroom

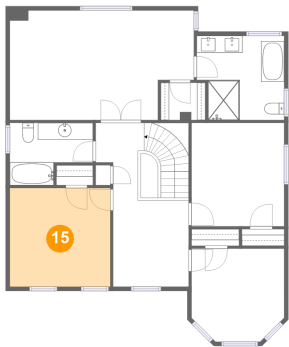


Max Dimensions: 10'11" x 12'3"
Calculated Area: 134 sq. ft
Included: Yes

Heated: Yes
Finished: Yes
Enclosed: Yes
Contiguous: Yes
Permitted: Yes
Wet space: No
Addition: No
Conversion: No

15 Culham Street, College Park, Oakville, Halton County,
Ontario, Canada, L6H 1G3

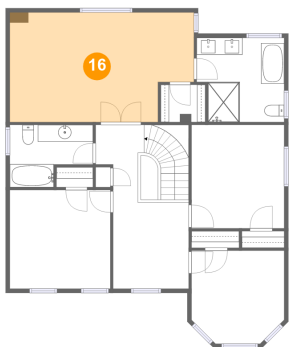
15 Floor 3 - Bedroom



Max Dimensions: 11'10" x 11'8"
Calculated Area: 138 sq. ft
Included: Yes

Heated: Yes
Finished: Yes
Enclosed: Yes
Contiguous: Yes
Permitted: Yes
Wet space: No
Addition: No
Conversion: No

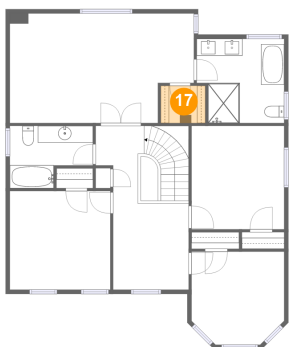
16 Floor 3 - Primary Bedroom



Max Dimensions: 21'9" x 12'11"
Calculated Area: 261 sq. ft
Included: Yes

Heated: Yes
Finished: Yes
Enclosed: Yes
Contiguous: Yes
Permitted: Yes
Wet space: No
Addition: No
Conversion: No

17 Floor 3 - W.I.C.

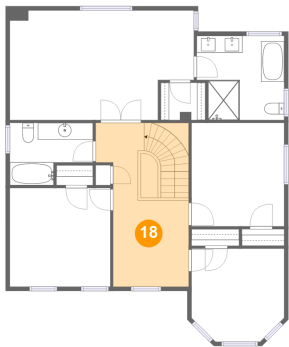


Max Dimensions: 5'3" x 4'5"
Calculated Area: 23 sq. ft
Included: Yes

Heated: Yes
Finished: Yes
Enclosed: Yes
Contiguous: Yes
Permitted: Yes
Wet space: No
Addition: No
Conversion: No

15 Culham Street, College Park, Oakville, Halton County,
Ontario, Canada, L6H 1G3

18 Floor 3 - Hall



Max Dimensions: 8'11" x 19'4"
Calculated Area: 182 sq. ft
Included: Yes

Heated: Yes
Finished: Yes
Enclosed: Yes
Contiguous: Yes
Permitted: Yes
Wet space: No
Addition: No
Conversion: No