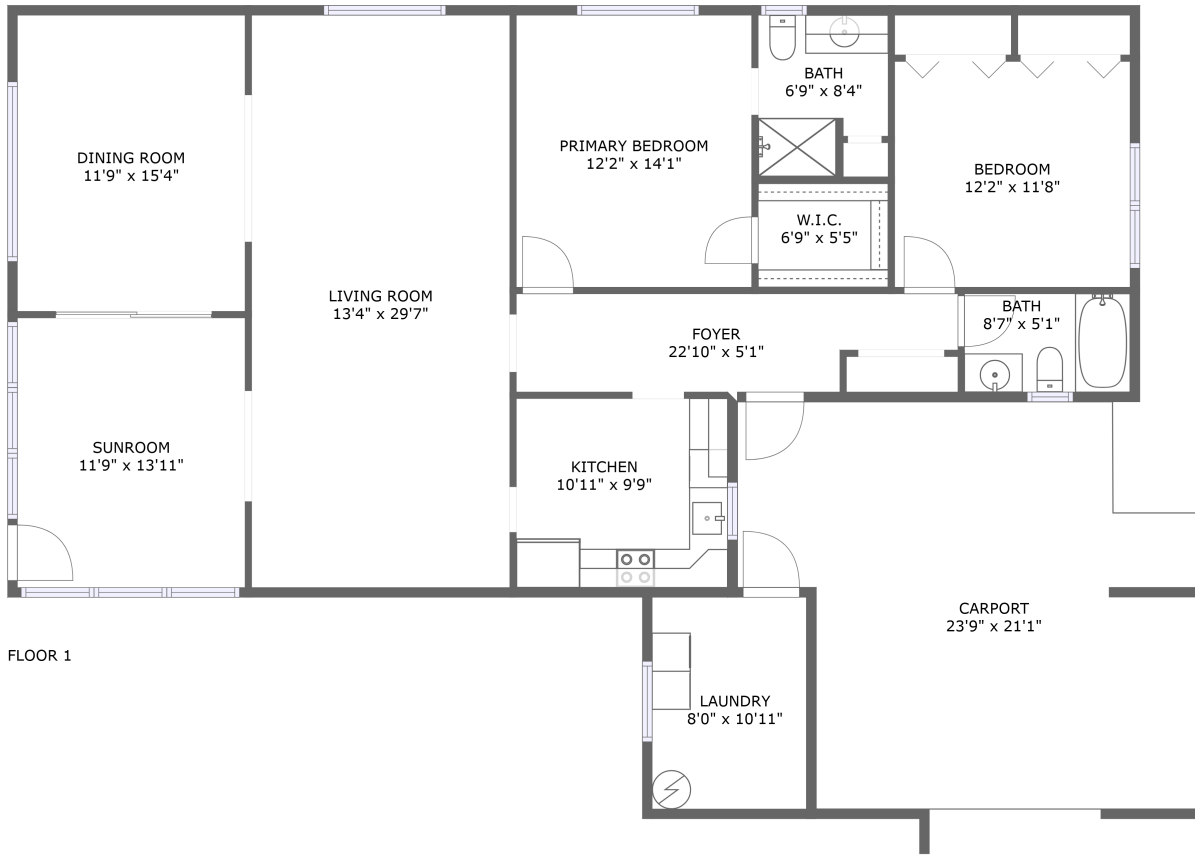


3904 Ashwood Lane, Central Sarasota, Sarasota, Sarasota County, Florida, United States, 34232

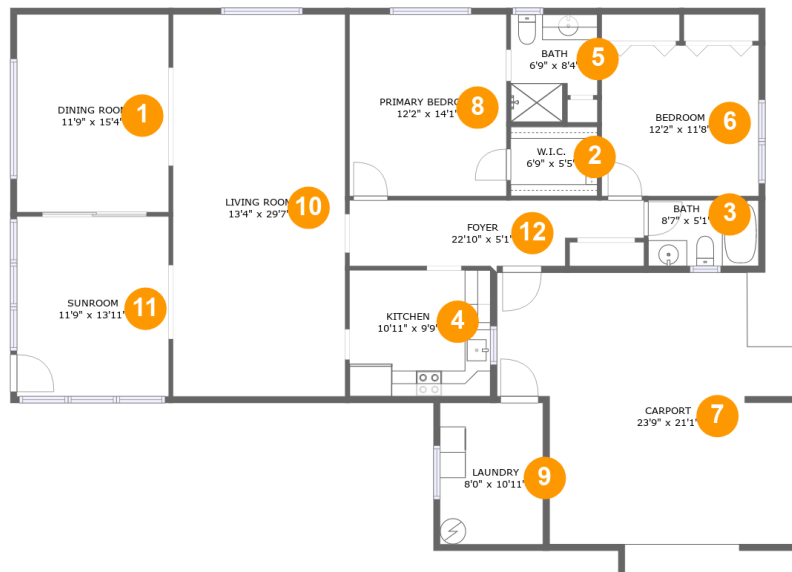


Property Summary

0 garages **2** bedrooms **2** bathrooms **0** half baths

1 floors **1,580** Gross Living Area sqft **2,119** total sqft

3904 Ashwood Lane, Central Sarasota, Sarasota, Sarasota County, Florida, United States, 34232



Room Dimensions

Floor 1

Total sqft: 2119

Living area: 1580

#	Room name	Dimensions	Area (sqft)	Counted as Living Area
1	Dining Room	11'9" x 15'4"	180 sq. ft	Yes
2	W.i.c.	6'9" x 5'5"	36 sq. ft	Yes
3	Bath	8'7" x 5'1"	44 sq. ft	Yes
4	Kitchen	10'11" x 9'9"	107 sq. ft	Yes
5	Bath	6'9" x 8'4"	50 sq. ft	Yes
6	Bedroom	12'2" x 11'8"	142 sq. ft	Yes
7	Carport	23'9" x 21'1"	429 sq. ft	No
8	Primary Bedroom	12'2" x 14'1"	171 sq. ft	Yes
9	Laundry	8'0" x 10'11"	87 sq. ft	No
10	Living Room	13'4" x 29'7"	395 sq. ft	Yes
11	Sunroom	11'9" x 13'11"	164 sq. ft	Yes

Scan captured on Sat, 19 Oct 2024 17:20:54 GMT

Information is calculated by CubiCasa technology; deemed highly reliable but not guaranteed.

**3904 Ashwood Lane, Central Sarasota, Sarasota,
Sarasota County, Florida, United States, 34232**

#	Room name	Dimensions	Area (sqft)	Counted as Living Area
12	Foyer	22'10" x 5'1"	103 sq. ft	Yes

3904 Ashwood Lane, Central Sarasota, Sarasota, Sarasota County, Florida, United States, 34232

1 Floor 1 - Dining Room



Dimensions: 11'9" x 15'4"
Area: 180 sq. ft
Counted as Living Area:
Yes

Heated: Yes
Finished: Yes
Enclosed: Yes
Contiguous:
Yes
Permitted: Yes
Wet Space: No
Addition: No
Conversion: No

2 Floor 1 - W.i.c.



Dimensions: 6'9" x 5'5"
Area: 36 sq. ft
Counted as Living Area:
Yes

Heated: Yes
Finished: Yes
Enclosed: Yes
Contiguous:
Yes
Permitted: Yes
Wet Space: No
Addition: No
Conversion: No

3904 Ashwood Lane, Central Sarasota, Sarasota, Sarasota County, Florida, United States, 34232

3 Floor 1 - Bath



Dimensions: 8'7" x 5'1"
Area: 44 sq. ft
Counted as Living Area:
Yes

Heated: Yes
Finished: Yes
Enclosed: Yes
Contiguous:
Yes
Permitted: Yes
Wet Space: Yes
Addition: No
Conversion: No

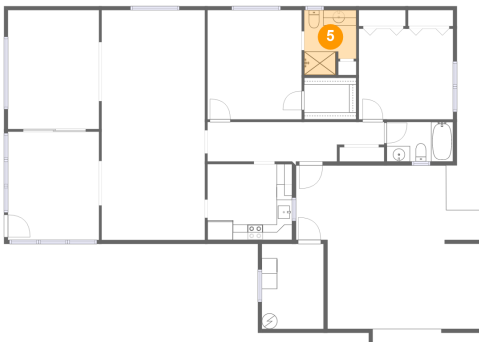
4 Floor 1 - Kitchen



Dimensions: 10'11" x 9'9"
Area: 107 sq. ft
Counted as Living Area:
Yes

Heated: Yes
Finished: Yes
Enclosed: Yes
Contiguous:
Yes
Permitted: Yes
Wet Space: No
Addition: No
Conversion: No

5 Floor 1 - Bath



Dimensions: 6'9" x 8'4"
Area: 50 sq. ft
Counted as Living Area:
Yes

Heated: Yes
Finished: Yes
Enclosed: Yes
Contiguous:
Yes
Permitted: Yes
Wet Space: Yes
Addition: No
Conversion: No

3904 Ashwood Lane, Central Sarasota, Sarasota, Sarasota County, Florida, United States, 34232

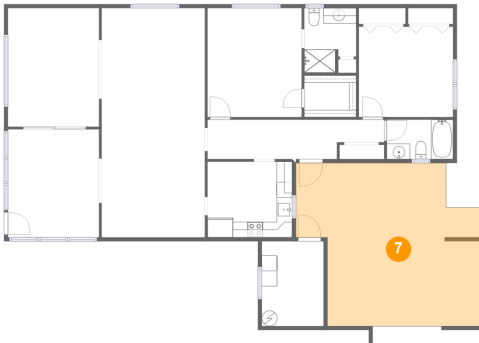
6 Floor 1 - Bedroom



Dimensions: 12'2" x 11'8"
Area: 142 sq. ft
Counted as Living Area:
Yes

Heated: Yes
Finished: Yes
Enclosed: Yes
Contiguous:
Yes
Permitted: Yes
Wet Space: No
Addition: No
Conversion: No

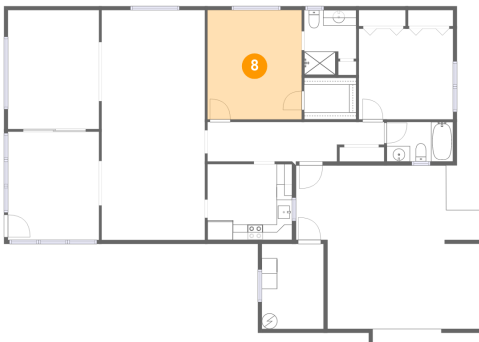
7 Floor 1 - Carport



Dimensions: 23'9" x 21'1"
Area: 429 sq. ft
Counted as Living Area: No

Heated: No
Finished: Yes
Enclosed: No
Contiguous: Yes
Permitted: Yes
Wet Space: No
Addition: No
Conversion: No

8 Floor 1 - Primary Bedroom

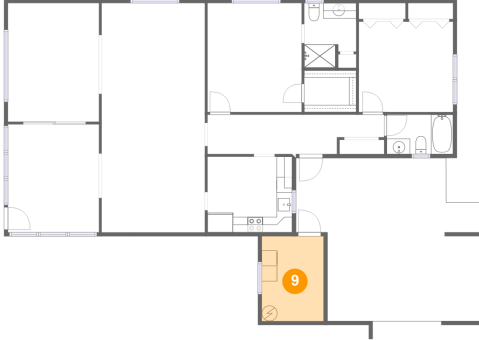


Dimensions: 12'2" x 14'1"
Area: 171 sq. ft
Counted as Living Area:
Yes

Heated: Yes
Finished: Yes
Enclosed: Yes
Contiguous:
Yes
Permitted: Yes
Wet Space: No
Addition: No
Conversion: No

3904 Ashwood Lane, Central Sarasota, Sarasota, Sarasota County, Florida, United States, 34232

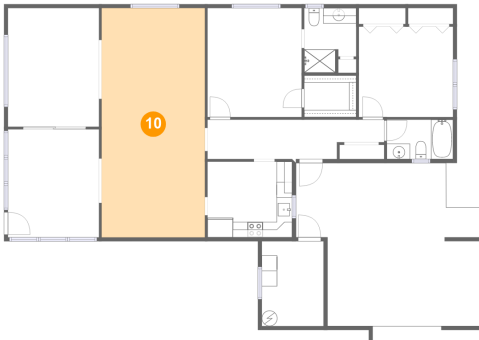
9 Floor 1 - Laundry



Dimensions: 8'0" x 10'11"
Area: 87 sq. ft
Counted as Living Area: No

Heated: Yes
Finished: Yes
Enclosed: Yes
Contiguous: No
Permitted: Yes
Wet Space: No
Addition: No
Conversion: No

10 Floor 1 - Living Room



Dimensions: 13'4" x 29'7"
Area: 395 sq. ft
Counted as Living Area:
Yes

Heated: Yes
Finished: Yes
Enclosed: Yes
Contiguous:
Yes
Permitted: Yes
Wet Space: No
Addition: No
Conversion: No

11 Floor 1 - Sunroom

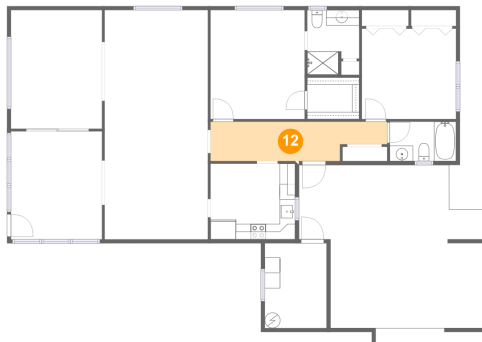


Dimensions: 11'9" x 13'11"
Area: 164 sq. ft
Counted as Living Area:
Yes

Heated: Yes
Finished: Yes
Enclosed: Yes
Contiguous:
Yes
Permitted: Yes
Wet Space: No
Addition: No
Conversion: No

3904 Ashwood Lane, Central Sarasota, Sarasota, Sarasota County, Florida, United States, 34232

12 Floor 1 - Foyer



Dimensions: 22'10" x 5'1"
Area: 103 sq. ft
Counted as Living Area:
Yes

Heated: Yes
Finished: Yes
Enclosed: Yes
Contiguous:
Yes
Permitted: Yes
Wet Space: No
Addition: No
Conversion: No