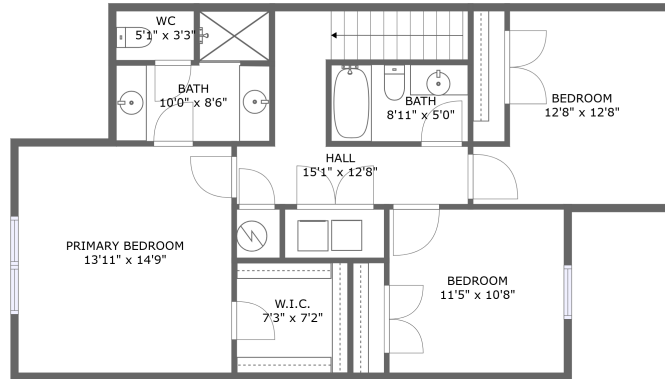
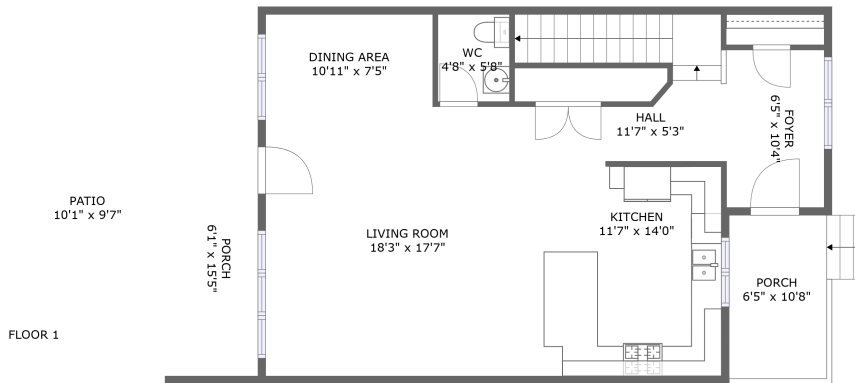


1032 Danby Trace Drive, Thompsons Station, Williamson County, Tennessee, United States,



FLOOR 2



FLOOR 1

Property Summary



2 floors



3 bedrooms



2 bathrooms



2,022 total sqft

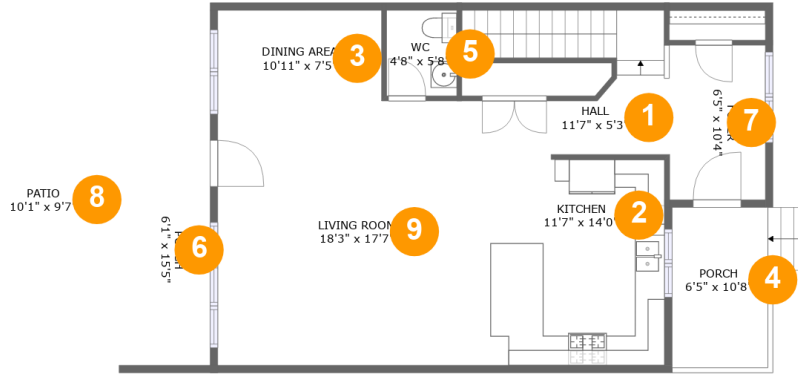


0 garages



1,762 Gross Living Area sqft

**1032 Danby Trace Drive, Thompsons Station,
Williamson County, Tennessee, United States,**



Room Dimensions

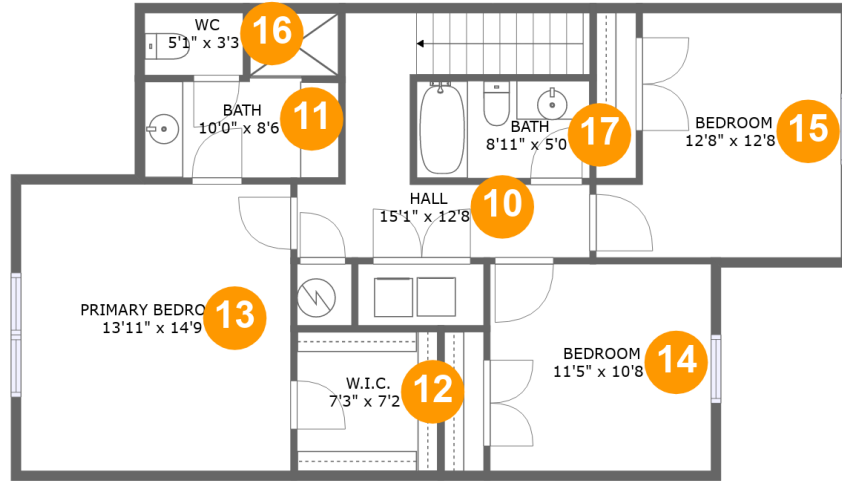
Floor 1

Total sqft: 1101

Living area: 841

#	Room name	Dimensions	Area (sqft)	Counted as Living Area
1	Hall	11'7" x 5'3"	97 sq. ft	Yes
2	Kitchen	11'7" x 14'0"	160 sq. ft	Yes
3	Dining Area	10'11" x 7'5"	81 sq. ft	Yes
4	Porch	6'5" x 10'8"	68 sq. ft	No
5	Wc	4'8" x 5'8"	27 sq. ft	Yes
6	Porch	6'1" x 15'5"	94 sq. ft	No
7	Foyer	6'5" x 10'4"	66 sq. ft	Yes
8	Patio	10'1" x 9'7"	98 sq. ft	Yes
9	Living Room	18'3" x 17'7"	306 sq. ft	Yes

**1032 Danby Trace Drive, Thompsons Station,
Williamson County, Tennessee, United States,**



Room Dimensions

Floor 2

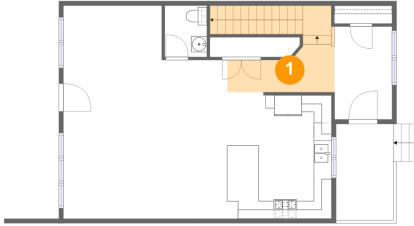
Total sqft: 921

Living area: 921

#	Room name	Dimensions	Area (sqft)	Counted as Living Area
10	Hall	15'1" x 12'8"	116 sq. ft	Yes
11	Bath	10'0" x 8'6"	66 sq. ft	Yes
12	W.i.c.	7'3" x 7'2"	52 sq. ft	Yes
13	Primary Bedroom	13'11" x 14'9"	206 sq. ft	Yes
14	Bedroom	11'5" x 10'8"	122 sq. ft	Yes
15	Bedroom	12'8" x 12'8"	139 sq. ft	Yes
16	Wc	5'1" x 3'3"	16 sq. ft	Yes
17	Bath	8'11" x 5'0"	45 sq. ft	Yes

1032 Danby Trace Drive, Thompsons Station, Williamson County, Tennessee, United States,

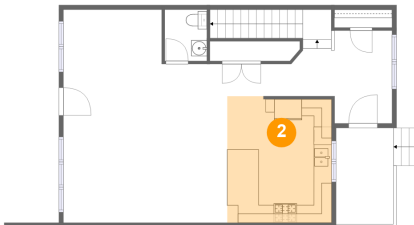
1 Floor 1 - Hall



Dimensions: 11'7" x 5'3"
Area: 97 sq. ft
Counted as Living Area:
Yes

Heated: Yes
Finished: Yes
Enclosed: Yes
Contiguous:
Yes
Permitted: Yes
Wet Space: No
Addition: No
Conversion: No

2 Floor 1 - Kitchen

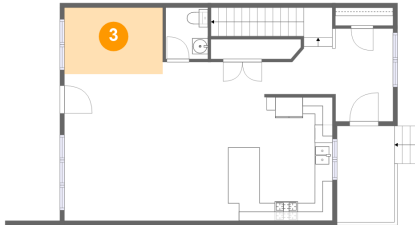


Dimensions: 11'7" x 14'0"
Area: 160 sq. ft
Counted as Living Area:
Yes

Heated: Yes
Finished: Yes
Enclosed: Yes
Contiguous:
Yes
Permitted: Yes
Wet Space: No
Addition: No
Conversion: No

1032 Danby Trace Drive, Thompsons Station, Williamson County, Tennessee, United States,

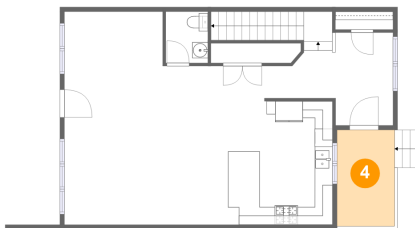
3 Floor 1 - Dining Area



Dimensions: 10'11" x 7'5"
Area: 81 sq. ft
Counted as Living Area:
Yes

Heated: Yes
Finished: Yes
Enclosed: Yes
Contiguous:
Yes
Permitted: Yes
Wet Space: No
Addition: No
Conversion: No

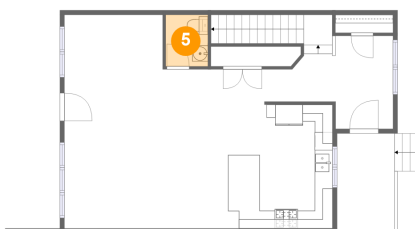
4 Floor 1 - Porch



Dimensions: 6'5" x 10'8"
Area: 68 sq. ft
Counted as Living Area: No

Heated: No
Finished: Yes
Enclosed: No
Contiguous: Yes
Permitted: Yes
Wet Space: No
Addition: No
Conversion: No

5 Floor 1 - Wc

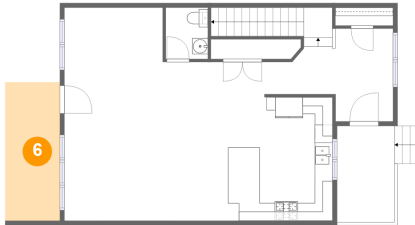


Dimensions: 4'8" x 5'8"
Area: 27 sq. ft
Counted as Living Area:
Yes

Heated: Yes
Finished: Yes
Enclosed: Yes
Contiguous:
Yes
Permitted: Yes
Wet Space: Yes
Addition: No
Conversion: No

1032 Danby Trace Drive, Thompsons Station, Williamson County, Tennessee, United States,

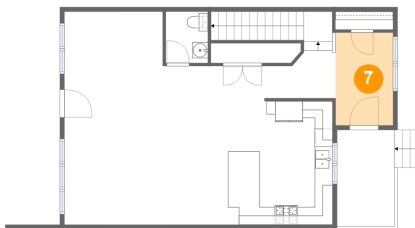
6 Floor 1 - Porch



Dimensions: 6'1" x 15'5"
Area: 94 sq. ft
Counted as Living Area: No

Heated: No
Finished: Yes
Enclosed: No
Contiguous: Yes
Permitted: Yes
Wet Space: No
Addition: No
Conversion: No

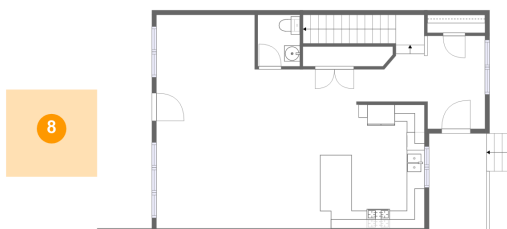
7 Floor 1 - Foyer



Dimensions: 6'5" x 10'4"
Area: 66 sq. ft
Counted as Living Area:
Yes

Heated: Yes
Finished: Yes
Enclosed: Yes
Contiguous:
Yes
Permitted: Yes
Wet Space: No
Addition: No
Conversion: No

8 Floor 1 - Patio

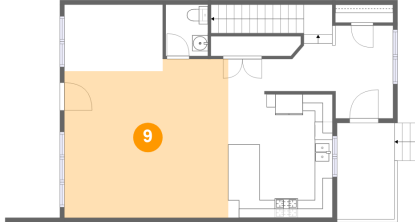


Dimensions: 10'1" x 9'7"
Area: 98 sq. ft
Counted as Living Area:
Yes

Heated: No
Finished: Yes
Enclosed: No
Contiguous:
Yes
Permitted: Yes
Wet Space: No
Addition: No
Conversion: No

1032 Danby Trace Drive, Thompsons Station, Williamson County, Tennessee, United States,

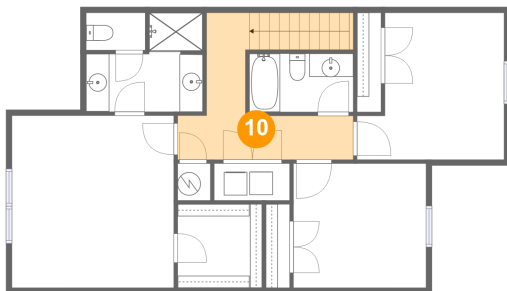
9 Floor 1 - Living Room



Dimensions: 18'3" x 17'7"
Area: 306 sq. ft
Counted as Living Area:
Yes

Heated: Yes
Finished: Yes
Enclosed: Yes
Contiguous:
Yes
Permitted: Yes
Wet Space: No
Addition: No
Conversion: No

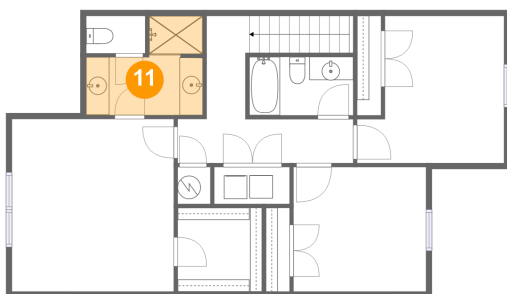
10 Floor 2 - Hall



Dimensions: 15'1" x 12'8"
Area: 116 sq. ft
Counted as Living Area:
Yes

Heated: Yes
Finished: Yes
Enclosed: Yes
Contiguous:
Yes
Permitted: Yes
Wet Space: No
Addition: No
Conversion: No

11 Floor 2 - Bath

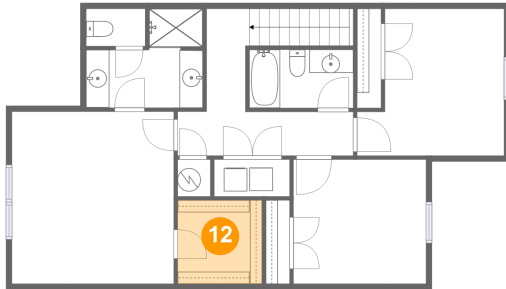


Dimensions: 10'0" x 8'6"
Area: 66 sq. ft
Counted as Living Area:
Yes

Heated: Yes
Finished: Yes
Enclosed: Yes
Contiguous:
Yes
Permitted: Yes
Wet Space: Yes
Addition: No
Conversion: No

1032 Danby Trace Drive, Thompsons Station, Williamson County, Tennessee, United States,

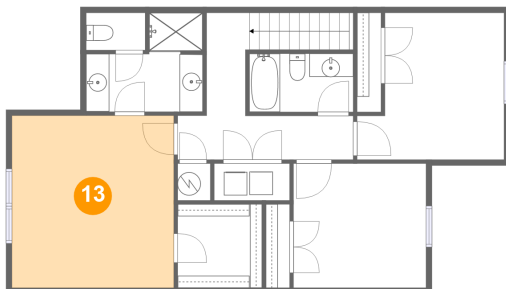
12 Floor 2 - W.i.c.



Dimensions: 7'3" x 7'2"
Area: 52 sq. ft
Counted as Living Area:
Yes

Heated: Yes
Finished: Yes
Enclosed: Yes
Contiguous:
Yes
Permitted: Yes
Wet Space: No
Addition: No
Conversion: No

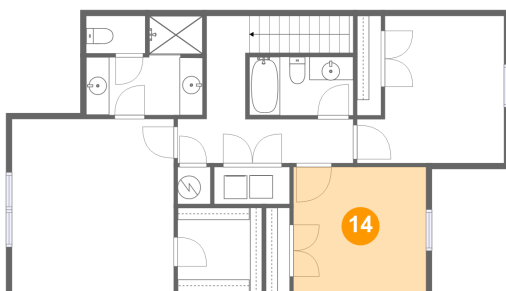
13 Floor 2 - Primary Bedroom



Dimensions: 13'11" x 14'9"
Area: 206 sq. ft
Counted as Living Area:
Yes

Heated: Yes
Finished: Yes
Enclosed: Yes
Contiguous:
Yes
Permitted: Yes
Wet Space: No
Addition: No
Conversion: No

14 Floor 2 - Bedroom

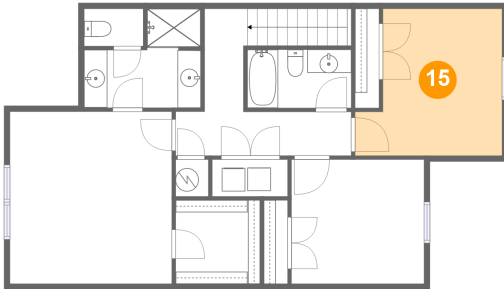


Dimensions: 11'5" x 10'8"
Area: 122 sq. ft
Counted as Living Area:
Yes

Heated: Yes
Finished: Yes
Enclosed: Yes
Contiguous:
Yes
Permitted: Yes
Wet Space: No
Addition: No
Conversion: No

1032 Danby Trace Drive, Thompsons Station, Williamson County, Tennessee, United States,

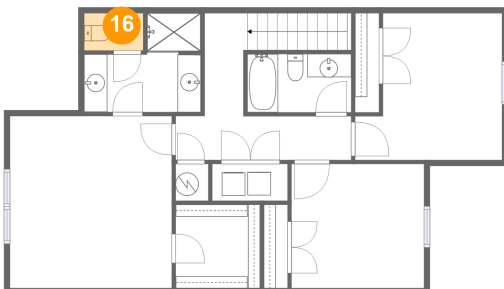
15 Floor 2 - Bedroom



Dimensions: 12'8" x 12'8"
Area: 139 sq. ft
Counted as Living Area:
Yes

Heated: Yes
Finished: Yes
Enclosed: Yes
Contiguous:
Yes
Permitted: Yes
Wet Space: No
Addition: No
Conversion: No

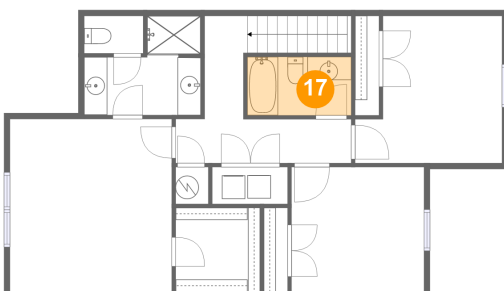
16 Floor 2 - Wc



Dimensions: 5'1" x 3'3"
Area: 16 sq. ft
Counted as Living Area:
Yes

Heated: Yes
Finished: Yes
Enclosed: Yes
Contiguous:
Yes
Permitted: Yes
Wet Space: Yes
Addition: No
Conversion: No

17 Floor 2 - Bath



Dimensions: 8'11" x 5'0"
Area: 45 sq. ft
Counted as Living Area:
Yes

Heated: Yes
Finished: Yes
Enclosed: Yes
Contiguous:
Yes
Permitted: Yes
Wet Space: Yes
Addition: No
Conversion: No