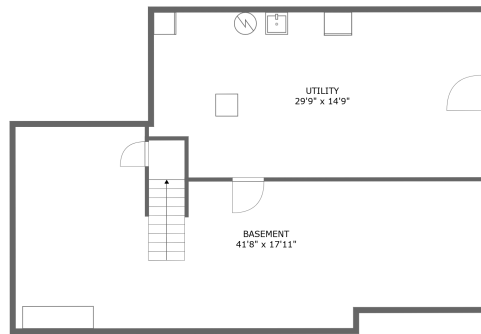
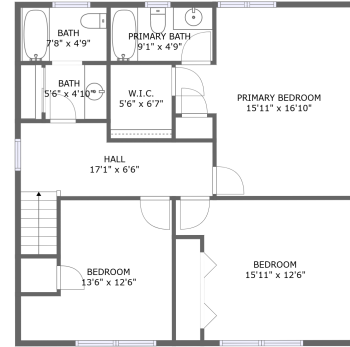
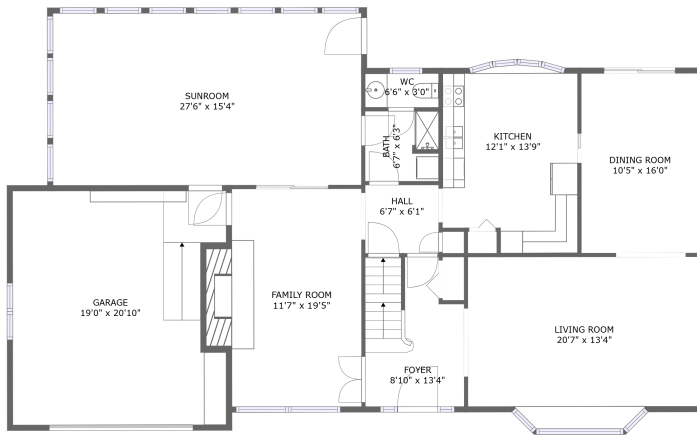


# 429 Eagle St, Woodstock, VA, US



## Property summary

 **1** Garages

 **3** Bedrooms

 **3** Bathrooms

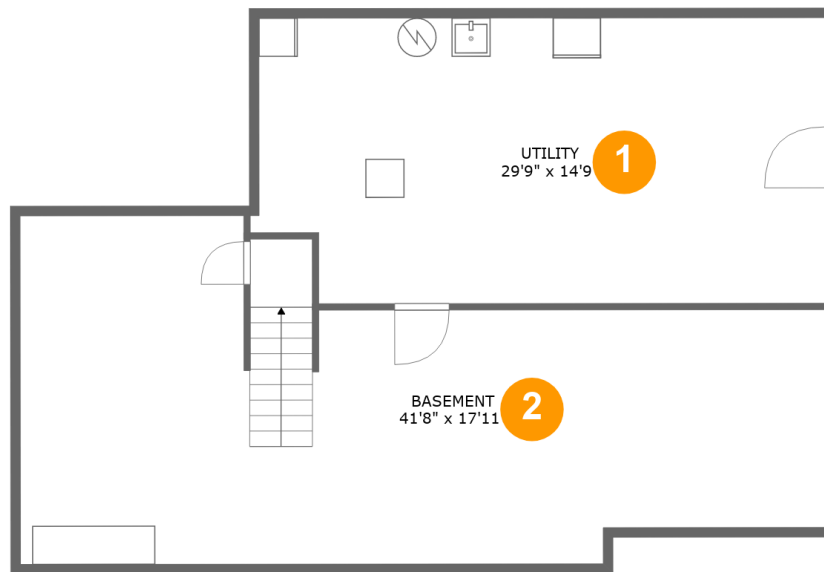
 **0** Half baths

 **3** Floors

 **2,631** Gross living area sqft

 **4,128** Total sqft

# 429 Eagle St, Woodstock, VA, US



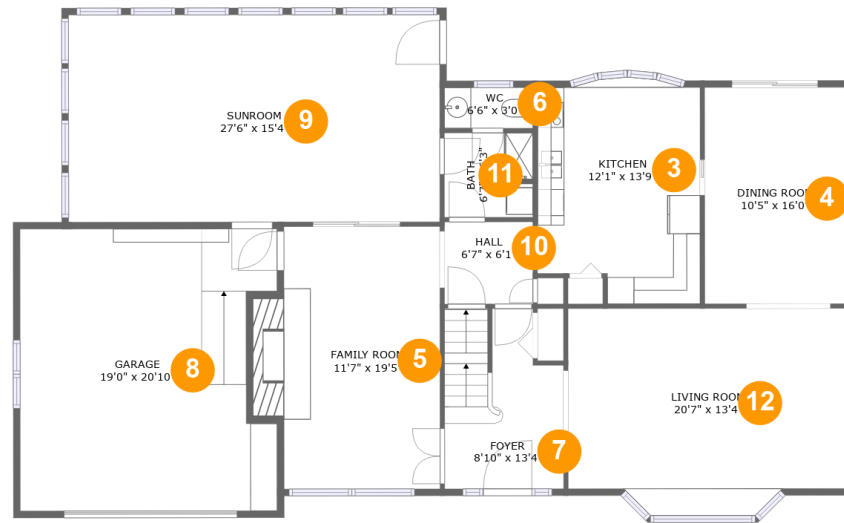
## Room dimensions

Floor 1

Total sqft: 1099

Living area: 0

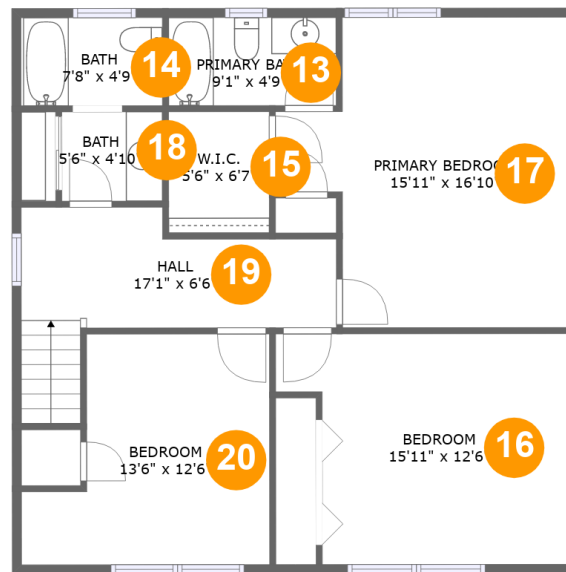
#		Dimensions	sqft	Counted as living area
1	Utility	29'9" x 14'9"	421 sq. ft	No
2	Basement	41'8" x 17'11"	591 sq. ft	No

**429 Eagle St, Woodstock, VA, US****Room dimensions**

Floor 2

Total sqft: 2084 Living area: 1686

#		Dimensions	sqft	Counted as living area
3	Kitchen	12'1" x 13'9"	186 sq. ft	Yes
4	Dining Room	10'5" x 16'0"	168 sq. ft	Yes
5	Family Room	11'7" x 19'5"	245 sq. ft	Yes
6	WC	6'6" x 3'0"	20 sq. ft	Yes
7	Foyer	8'10" x 13'4"	107 sq. ft	Yes
8	Garage	19'0" x 20'10"	376 sq. ft	No
9	Sunroom	27'6" x 15'4"	423 sq. ft	Yes
10	Hall	6'7" x 6'1"	40 sq. ft	Yes
11	Bath	6'7" x 6'3"	40 sq. ft	Yes
12	Living Room	20'7" x 13'4"	295 sq. ft	Yes

**429 Eagle St, Woodstock, VA, US****Room dimensions**

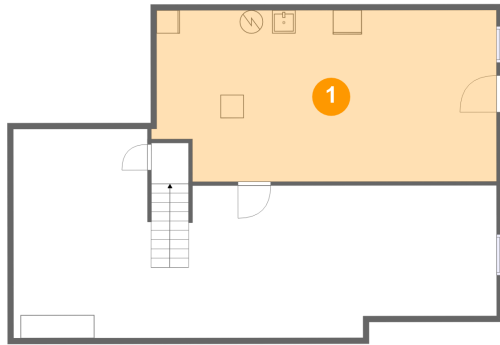
Floor 3

Total sqft: 945 Living area: 945

#		Dimensions	sqft	Counted as living area
13	Primary Bath	9'1" x 4'9"	44 sq. ft	Yes
14	Bath	7'8" x 4'9"	37 sq. ft	Yes
15	W.I.C.	5'6" x 6'7"	36 sq. ft	Yes
16	Bedroom	15'11" x 12'6"	176 sq. ft	Yes
17	Primary Bedroom	15'11" x 16'10"	223 sq. ft	Yes
18	Bath	5'6" x 4'10"	27 sq. ft	Yes
19	Hall	17'1" x 6'6"	112 sq. ft	Yes
20	Bedroom	13'6" x 12'6"	139 sq. ft	Yes

# 429 Eagle St, Woodstock, VA, US

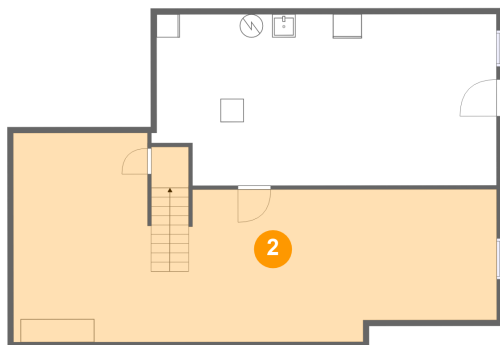
## 1 Floor 1 - Utility



Dimensions: 29'9" x 14'9"  
Area: 421 sq. ft  
Counted as living area: No

Heated: Yes  
Finished: No  
Enclosed: Yes  
Contiguous: Yes  
Permitted: Yes  
Wet space: No  
Addition: No  
Conversion: No

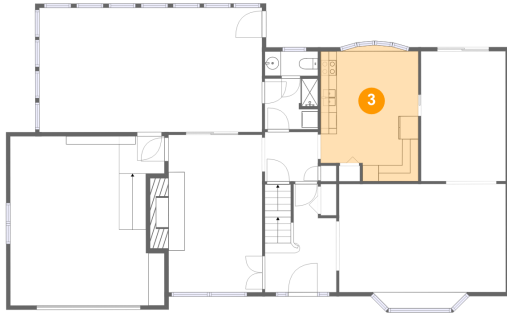
## 2 Floor 1 - Basement



Dimensions: 41'8" x 17'11"  
Area: 591 sq. ft  
Counted as living area: No

Heated: Yes  
Finished: Yes  
Enclosed: Yes  
Contiguous: No  
Permitted: Yes  
Wet space: No  
Addition: No  
Conversion: No

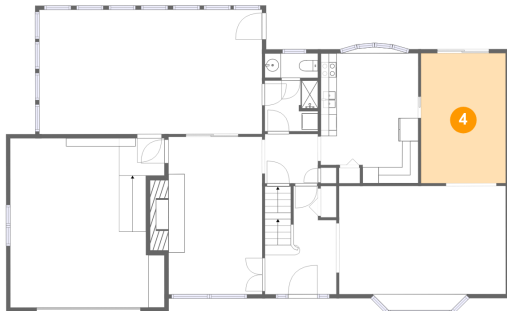
### 3 Floor 2 - Kitchen



Dimensions: 12'1" x 13'9"  
Area: 186 sq. ft  
Counted as living area: Yes

Heated: Yes  
Finished: Yes  
Enclosed: Yes  
Contiguous: Yes  
Permitted: Yes  
Wet space: No  
Addition: No  
Conversion: No

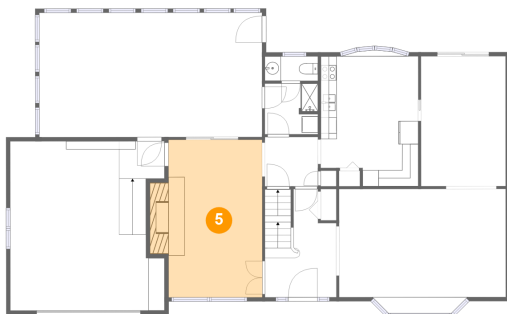
### 4 Floor 2 - Dining Room



Dimensions: 10'5" x 16'0"  
Area: 168 sq. ft  
Counted as living area: Yes

Heated: Yes  
Finished: Yes  
Enclosed: Yes  
Contiguous: Yes  
Permitted: Yes  
Wet space: No  
Addition: No  
Conversion: No

### 5 Floor 2 - Family Room

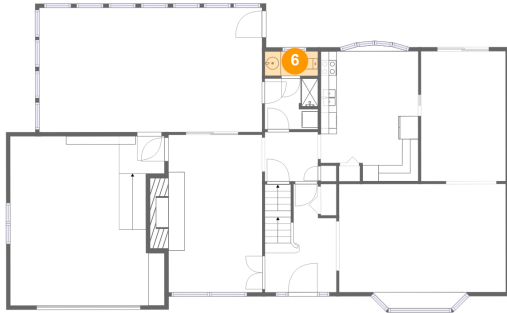


Dimensions: 11'7" x 19'5"  
Area: 245 sq. ft  
Counted as living area: Yes

Heated: Yes  
Finished: Yes  
Enclosed: Yes  
Contiguous: Yes  
Permitted: Yes  
Wet space: No  
Addition: No  
Conversion: No

# 429 Eagle St, Woodstock, VA, US

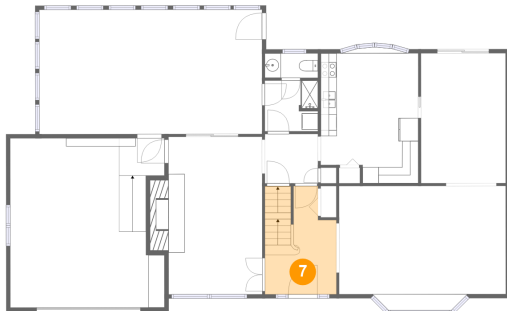
## 6 Floor 2 - WC



Dimensions: 6'6" x 3'0"  
Area: 20 sq. ft  
Counted as living area: Yes

Heated: Yes  
Finished: Yes  
Enclosed: Yes  
Contiguous: Yes  
Permitted: Yes  
Wet space: Yes  
Addition: No  
Conversion: No

## 7 Floor 2 - Foyer



Dimensions: 8'10" x 13'4"  
Area: 107 sq. ft  
Counted as living area: Yes

Heated: Yes  
Finished: Yes  
Enclosed: Yes  
Contiguous: Yes  
Permitted: Yes  
Wet space: No  
Addition: No  
Conversion: No

## 8 Floor 2 - Garage

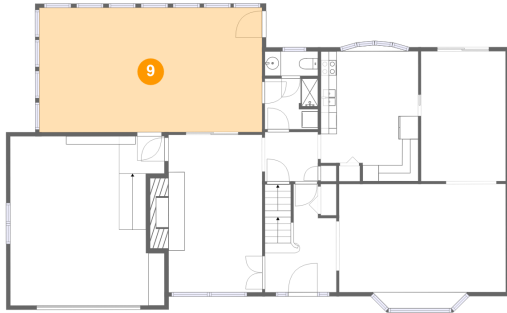


Dimensions: 19'0" x 20'10"  
Area: 376 sq. ft  
Counted as living area: No

Heated: No  
Finished: No  
Enclosed: Yes  
Contiguous: Yes  
Permitted: Yes  
Wet space: No  
Addition: No  
Conversion: No

# 429 Eagle St, Woodstock, VA, US

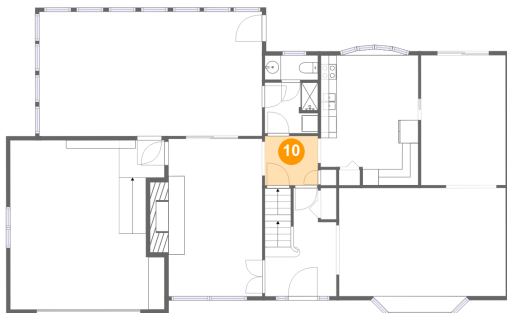
## 9 Floor 2 - Sunroom



Dimensions: 27'6" x 15'4"  
Area: 423 sq. ft  
Counted as living area: Yes

Heated: Yes  
Finished: Yes  
Enclosed: Yes  
Contiguous: Yes  
Permitted: Yes  
Wet space: No  
Addition: No  
Conversion: No

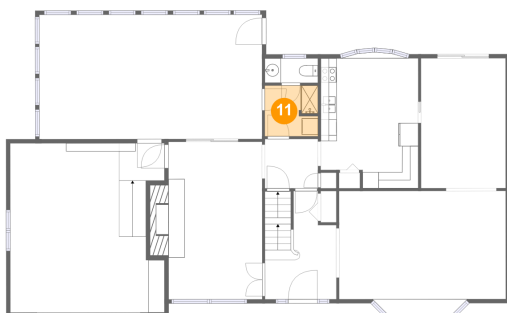
## 10 Floor 2 - Hall



Dimensions: 6'7" x 6'1"  
Area: 40 sq. ft  
Counted as living area: Yes

Heated: Yes  
Finished: Yes  
Enclosed: Yes  
Contiguous: Yes  
Permitted: Yes  
Wet space: No  
Addition: No  
Conversion: No

## 11 Floor 2 - Bath



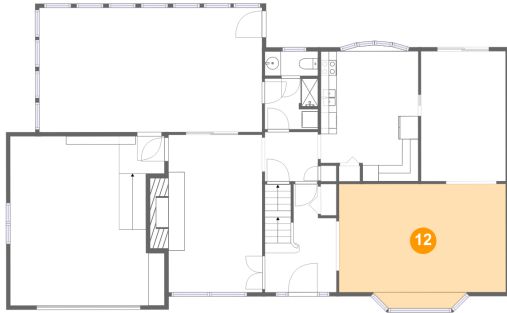
Dimensions: 6'7" x 6'3"  
Area: 40 sq. ft  
Counted as living area: Yes

Heated: Yes  
Finished: Yes  
Enclosed: Yes  
Contiguous: Yes  
Permitted: Yes  
Wet space: Yes  
Addition: No  
Conversion: No



# 429 Eagle St, Woodstock, VA, US

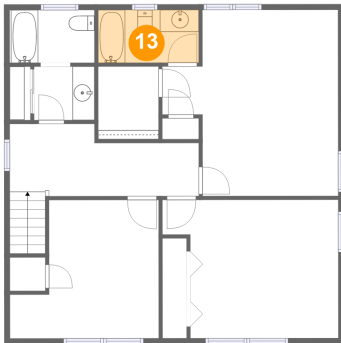
## 12 Floor 2 - Living Room



Dimensions: 20'7" x 13'4"  
Area: 295 sq. ft  
Counted as living area: Yes

Heated: Yes  
Finished: Yes  
Enclosed: Yes  
Contiguous: Yes  
Permitted: Yes  
Wet space: No  
Addition: No  
Conversion: No

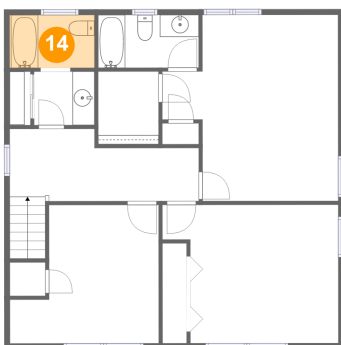
## 13 Floor 3 - Primary Bath



Dimensions: 9'1" x 4'9"  
Area: 44 sq. ft  
Counted as living area: Yes

Heated: Yes  
Finished: Yes  
Enclosed: Yes  
Contiguous: Yes  
Permitted: Yes  
Wet space: Yes  
Addition: No  
Conversion: No

## 14 Floor 3 - Bath

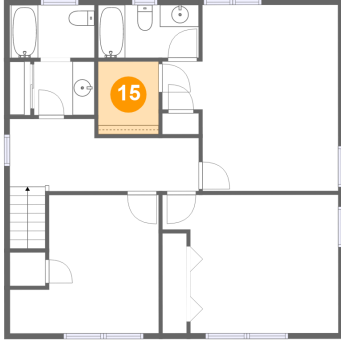


Dimensions: 7'8" x 4'9"  
Area: 37 sq. ft  
Counted as living area: Yes

Heated: Yes  
Finished: Yes  
Enclosed: Yes  
Contiguous: Yes  
Permitted: Yes  
Wet space: Yes  
Addition: No  
Conversion: No

# 429 Eagle St, Woodstock, VA, US

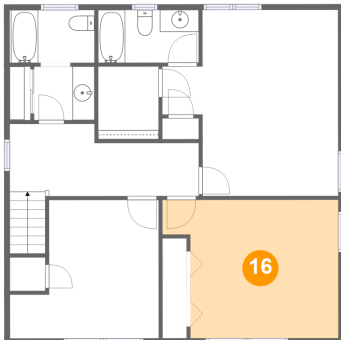
## 15 Floor 3 - W.I.C.



Dimensions: 5'6" x 6'7"  
Area: 36 sq. ft  
Counted as living area: Yes

Heated: Yes  
Finished: Yes  
Enclosed: Yes  
Contiguous: Yes  
Permitted: Yes  
Wet space: No  
Addition: No  
Conversion: No

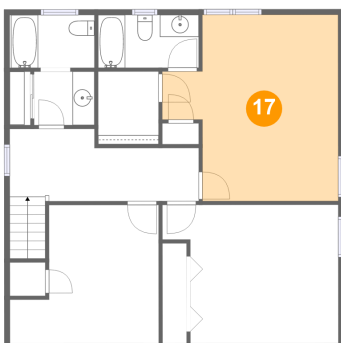
## 16 Floor 3 - Bedroom



Dimensions: 15'11" x 12'6"  
Area: 176 sq. ft  
Counted as living area: Yes

Heated: Yes  
Finished: Yes  
Enclosed: Yes  
Contiguous: Yes  
Permitted: Yes  
Wet space: No  
Addition: No  
Conversion: No

## 17 Floor 3 - Primary Bedroom

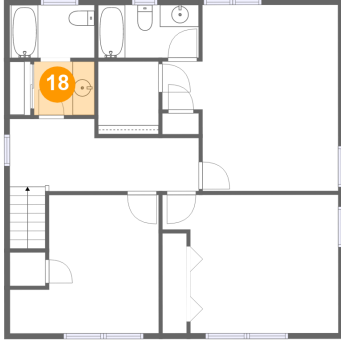


Dimensions: 15'11" x 16'10"  
Area: 223 sq. ft  
Counted as living area: Yes

Heated: Yes  
Finished: Yes  
Enclosed: Yes  
Contiguous: Yes  
Permitted: Yes  
Wet space: No  
Addition: No  
Conversion: No

# 429 Eagle St, Woodstock, VA, US

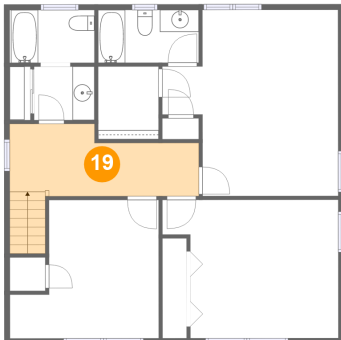
## 18 Floor 3 - Bath



Dimensions: 5'6" x 4'10"  
Area: 27 sq. ft  
Counted as living area: Yes

Heated: Yes  
Finished: Yes  
Enclosed: Yes  
Contiguous: Yes  
Permitted: Yes  
Wet space: Yes  
Addition: No  
Conversion: No

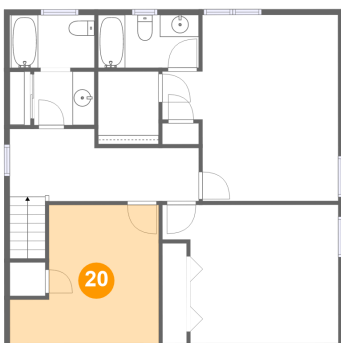
## 19 Floor 3 - Hall



Dimensions: 17'1" x 6'6"  
Area: 112 sq. ft  
Counted as living area: Yes

Heated: Yes  
Finished: Yes  
Enclosed: Yes  
Contiguous: Yes  
Permitted: Yes  
Wet space: No  
Addition: No  
Conversion: No

## 20 Floor 3 - Bedroom



Dimensions: 13'6" x 12'6"  
Area: 139 sq. ft  
Counted as living area: Yes

Heated: Yes  
Finished: Yes  
Enclosed: Yes  
Contiguous: Yes  
Permitted: Yes  
Wet space: No  
Addition: No  
Conversion: No