

6467 Poages Mill Drive, Poages Mill Estates, Roanoke, Roanoke County, Virginia, United States,

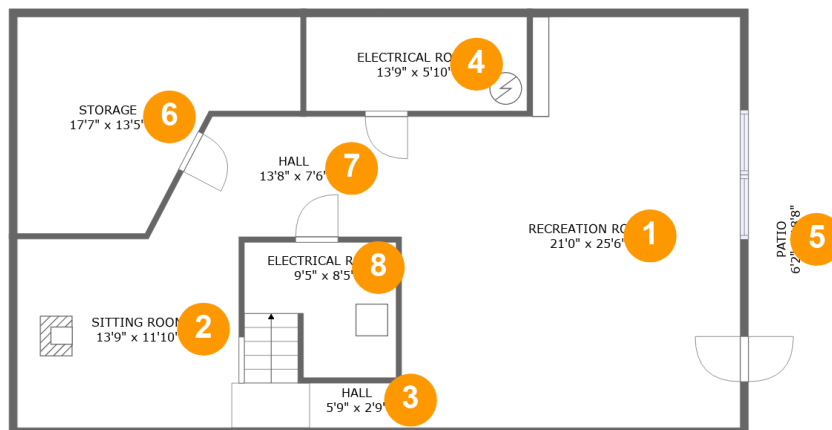


Property summary

1 Garages
 4 Bedrooms
 2 Bathrooms
 1 Half baths

3 Floors
 3,763 Gross living area sqft
 5,713 Total sqft

6467 Poages Mill Drive, Poages Mill Estates, Roanoke, Roanoke County, Virginia, United States,



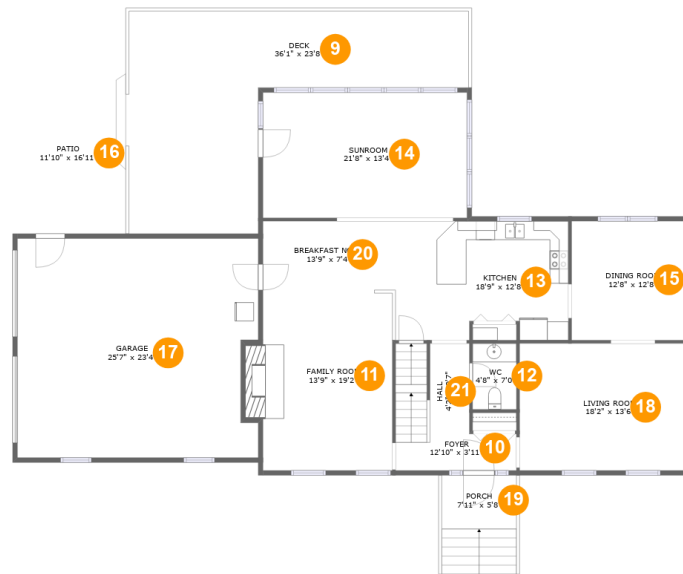
Room dimensions

Floor 1

Total sqft: 1333 Living area: 868

#		Dimensions	sqft	Counted as living area
1	Recreation Room	21'0" x 25'6"	486 sq. ft	Yes
2	Living Room	13'9" x 11'10"	162 sq. ft	Yes
3	Hall	5'9" x 2'9"	43 sq. ft	Yes
4	Room	13'9" x 5'10"	80 sq. ft	No
5	Outdoor	6'2" x 18'8"	117 sq. ft	No
6	Storage	17'7" x 13'5"	178 sq. ft	No
7	Hall	13'8" x 7'6"	102 sq. ft	Yes
8	Room	9'5" x 8'5"	65 sq. ft	No

6467 Poages Mill Drive, Poages Mill Estates, Roanoke, Roanoke County, Virginia, United States,



Room dimensions

Floor 2

Total sqft: 3058 Living area: 1589

#		Dimensions	sqft	Counted as living area
9	Outdoor	36'1" x 23'8"	531 sq. ft	No
10	Entry	12'10" x 3'11"	50 sq. ft	Yes
11	Living Room	13'9" x 19'2"	279 sq. ft	Yes
12	Bath	4'8" x 7'0"	33 sq. ft	Yes
13	Kitchen	18'9" x 12'8"	226 sq. ft	Yes
14	Room	21'8" x 13'4"	290 sq. ft	Yes
15	Dining Room	12'8" x 12'8"	160 sq. ft	Yes
16	Outdoor	11'10" x 16'11"	214 sq. ft	No
17	Garage	25'7" x 23'4"	581 sq. ft	No
18	Living Room	18'2" x 13'6"	246 sq. ft	Yes
19	Outdoor	7'11" x 5'8"	90 sq. ft	No

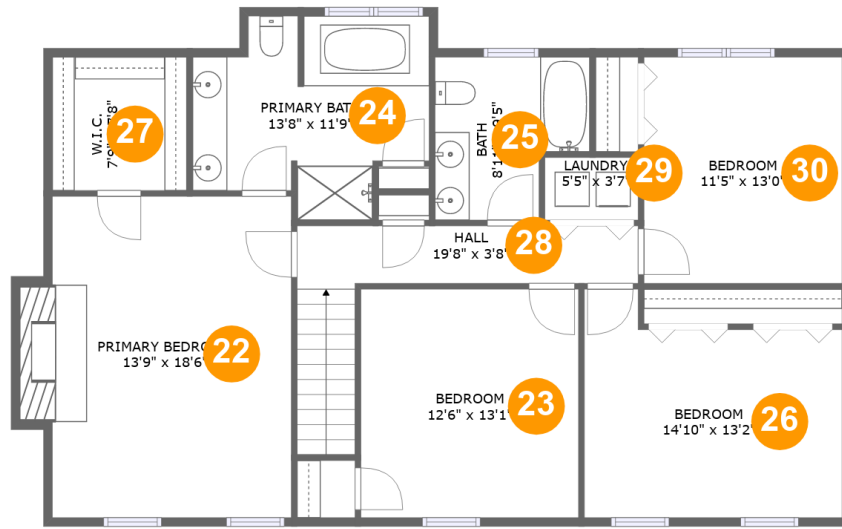
Scan captured on Fri, 03 Jan 2025 19:34:19 GMT

Information is calculated by Cubicasa technology deemed highly reliable but not guaranteed.

**6467 Poages Mill Drive, Poages Mill Estates,
Roanoke, Roanoke County, Virginia, United States,**

#		Dimensions	sqft	Counted as living area
20	Nook	13'9" x 7'4"	101 sq. ft	Yes
21	Hall	4'2" x 9'7"	74 sq. ft	Yes

**6467 Poages Mill Drive, Poages Mill Estates,
Roanoke, Roanoke County, Virginia, United States,**



Room dimensions

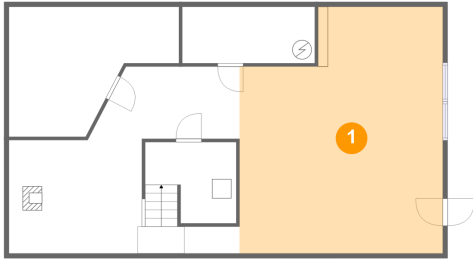
Floor 3

Total sqft: 1322 Living area: 1306

#		Dimensions	sqft	Counted as living area
22	Bedroom	13'9" x 18'6"	269 sq. ft	Yes
23	Bedroom	12'6" x 13'1"	165 sq. ft	Yes
24	Bath	13'8" x 11'9"	129 sq. ft	Yes
25	Bath	8'11" x 9'5"	72 sq. ft	Yes
26	Bedroom	14'10" x 13'2"	168 sq. ft	Yes
27	Cl	7'9" x 7'8"	59 sq. ft	Yes
28	Hall	19'8" x 3'8"	98 sq. ft	Yes
29	Utility	5'5" x 3'7"	19 sq. ft	Yes
30	Bedroom	11'5" x 13'0"	149 sq. ft	Yes

6467 Poages Mill Drive, Poages Mill Estates, Roanoke, Roanoke County, Virginia, United States,

1 Floor 1 - Recreation Room



Dimensions: 21'0" x 25'6"
Area: 486 sq. ft
Counted as living area: Yes

Heated: Yes
Finished: Yes
Enclosed: Yes
Contiguous: Yes
Permitted: Yes
Wet space: No
Addition: No
Conversion: No

2 Floor 1 - Living Room

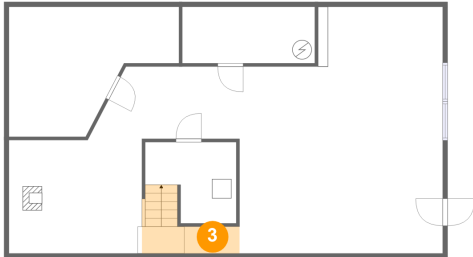


Dimensions: 13'9" x 11'10"
Area: 162 sq. ft
Counted as living area: Yes

Heated: Yes
Finished: Yes
Enclosed: Yes
Contiguous: Yes
Permitted: Yes
Wet space: No
Addition: No
Conversion: No

6467 Poages Mill Drive, Poages Mill Estates, Roanoke, Roanoke County, Virginia, United States,

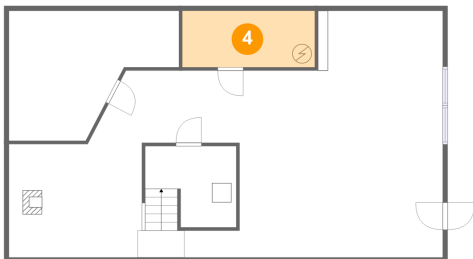
3 Floor 1 - Hall



Dimensions: 5'9" x 2'9"
Area: 43 sq. ft
Counted as living area: Yes

Heated: Yes
Finished: Yes
Enclosed: Yes
Contiguous: Yes
Permitted: Yes
Wet space: No
Addition: No
Conversion: No

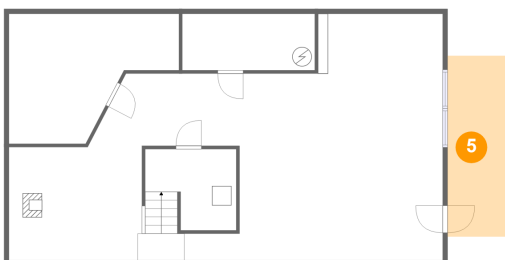
4 Floor 1 - Room



Dimensions: 13'9" x 5'10"
Area: 80 sq. ft
Counted as living area: No

Heated: No
Finished: No
Enclosed: Yes
Contiguous: Yes
Permitted: Yes
Wet space: No
Addition: No
Conversion: No

5 Floor 1 - Outdoor



Dimensions: 6'2" x 18'8"
Area: 117 sq. ft
Counted as living area: No

Heated: No
Finished: Yes
Enclosed: No
Contiguous: Yes
Permitted: Yes
Wet space: No
Addition: No
Conversion: No

6467 Poages Mill Drive, Poages Mill Estates, Roanoke, Roanoke County, Virginia, United States,

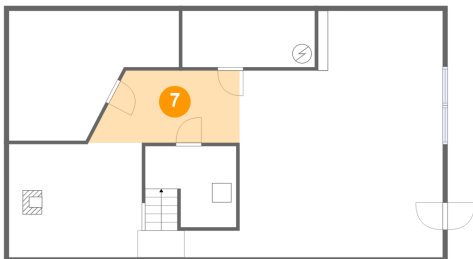
6 Floor 1 - Storage



Dimensions: 17'7" x 13'5"
Area: 178 sq. ft
Counted as living area: No

Heated: No
Finished: No
Enclosed: No
Contiguous: Yes
Permitted: Yes
Wet space: No
Addition: No
Conversion: No

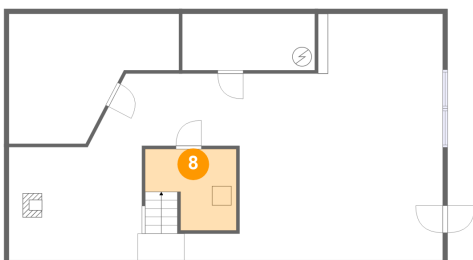
7 Floor 1 - Hall



Dimensions: 13'8" x 7'6"
Area: 102 sq. ft
Counted as living area: Yes

Heated: Yes
Finished: Yes
Enclosed: Yes
Contiguous: Yes
Permitted: Yes
Wet space: No
Addition: No
Conversion: No

8 Floor 1 - Room



Dimensions: 9'5" x 8'5"
Area: 65 sq. ft
Counted as living area: No

Heated: No
Finished: No
Enclosed: Yes
Contiguous: Yes
Permitted: Yes
Wet space: No
Addition: No
Conversion: No

6467 Poages Mill Drive, Poages Mill Estates, Roanoke, Roanoke County, Virginia, United States,

9 Floor 2 - Outdoor



Dimensions: 36'1" x 23'8"
Area: 531 sq. ft
Counted as living area: No

Heated: No
Finished: Yes
Enclosed: No
Contiguous: Yes
Permitted: Yes
Wet space: No
Addition: No
Conversion: No

10 Floor 2 - Entry



Dimensions: 12'10" x 3'11"
Area: 50 sq. ft
Counted as living area: Yes

Heated: Yes
Finished: Yes
Enclosed: Yes
Contiguous: Yes
Permitted: Yes
Wet space: No
Addition: No
Conversion: No

11 Floor 2 - Living Room



Dimensions: 13'9" x 19'2"
Area: 279 sq. ft
Counted as living area: Yes

Heated: Yes
Finished: Yes
Enclosed: Yes
Contiguous: Yes
Permitted: Yes
Wet space: No
Addition: No
Conversion: No

6467 Poages Mill Drive, Poages Mill Estates, Roanoke, Roanoke County, Virginia, United States,

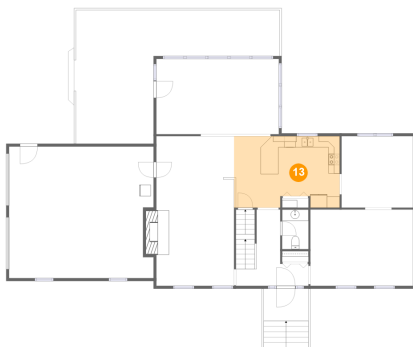
12 Floor 2 - Bath



Dimensions: 4'8" x 7'0"
Area: 33 sq. ft
Counted as living area: Yes

Heated: Yes
Finished: Yes
Enclosed: Yes
Contiguous: Yes
Permitted: Yes
Wet space: Yes
Addition: No
Conversion: No

13 Floor 2 - Kitchen



Dimensions: 18'9" x 12'8"
Area: 226 sq. ft
Counted as living area: Yes

Heated: Yes
Finished: Yes
Enclosed: Yes
Contiguous: Yes
Permitted: Yes
Wet space: No
Addition: No
Conversion: No

14 Floor 2 - Room



Dimensions: 21'8" x 13'4"
Area: 290 sq. ft
Counted as living area: Yes

Heated: Yes
Finished: Yes
Enclosed: Yes
Contiguous: Yes
Permitted: Yes
Wet space: No
Addition: No
Conversion: No

6467 Poages Mill Drive, Poages Mill Estates, Roanoke, Roanoke County, Virginia, United States,

15 Floor 2 - Dining Room



Dimensions: 12'8" x 12'8"
Area: 160 sq. ft
Counted as living area: Yes

Heated: Yes
Finished: Yes
Enclosed: Yes
Contiguous: Yes
Permitted: Yes
Wet space: No
Addition: No
Conversion: No

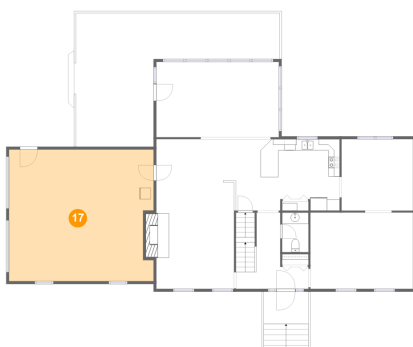
16 Floor 2 - Outdoor



Dimensions: 11'10" x 16'11"
Area: 214 sq. ft
Counted as living area: No

Heated: No
Finished: Yes
Enclosed: No
Contiguous: Yes
Permitted: Yes
Wet space: No
Addition: No
Conversion: No

17 Floor 2 - Garage



Dimensions: 25'7" x 23'4"
Area: 581 sq. ft
Counted as living area: No

Heated: No
Finished: No
Enclosed: Yes
Contiguous: Yes
Permitted: Yes
Wet space: No
Addition: No
Conversion: No

**6467 Poages Mill Drive, Poages Mill Estates,
Roanoke, Roanoke County, Virginia, United States,****18 Floor 2 - Living Room**

Dimensions: 18'2" x 13'6"
Area: 246 sq. ft
Counted as living area: Yes

Heated: Yes
Finished: Yes
Enclosed: Yes
Contiguous: Yes
Permitted: Yes
Wet space: No
Addition: No
Conversion: No

19 Floor 2 - Outdoor

Dimensions: 7'11" x 5'8"
Area: 90 sq. ft
Counted as living area: No

Heated: No
Finished: Yes
Enclosed: No
Contiguous: Yes
Permitted: Yes
Wet space: No
Addition: No
Conversion: No

20 Floor 2 - Nook

Dimensions: 13'9" x 7'4"
Area: 101 sq. ft
Counted as living area: Yes

Heated: Yes
Finished: Yes
Enclosed: Yes
Contiguous: Yes
Permitted: Yes
Wet space: No
Addition: No
Conversion: No

6467 Poages Mill Drive, Poages Mill Estates, Roanoke, Roanoke County, Virginia, United States,

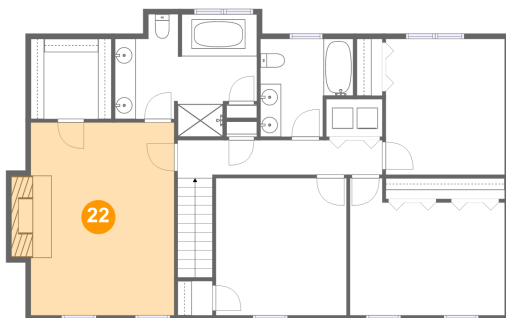
21 Floor 2 - Hall



Dimensions: 4'2" x 9'7"
Area: 74 sq. ft
Counted as living area: Yes

Heated: Yes
Finished: Yes
Enclosed: Yes
Contiguous: Yes
Permitted: Yes
Wet space: No
Addition: No
Conversion: No

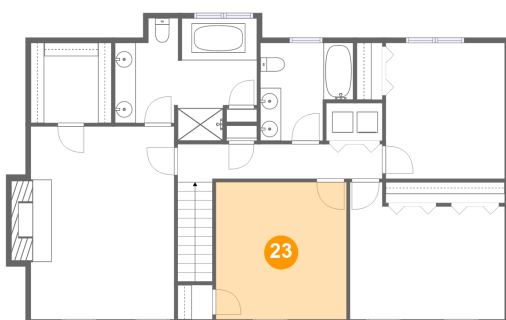
22 Floor 3 - Bedroom



Dimensions: 13'9" x 18'6"
Area: 269 sq. ft
Counted as living area: Yes

Heated: Yes
Finished: Yes
Enclosed: Yes
Contiguous: Yes
Permitted: Yes
Wet space: No
Addition: No
Conversion: No

23 Floor 3 - Bedroom

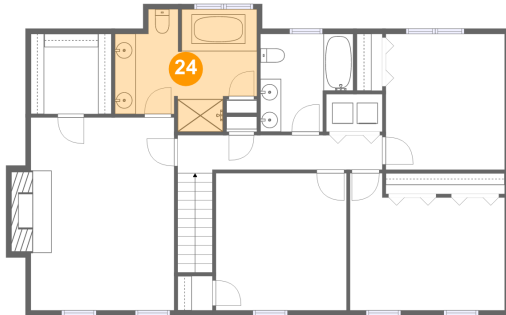


Dimensions: 12'6" x 13'1"
Area: 165 sq. ft
Counted as living area: Yes

Heated: Yes
Finished: Yes
Enclosed: Yes
Contiguous: Yes
Permitted: Yes
Wet space: No
Addition: No
Conversion: No

**6467 Poages Mill Drive, Poages Mill Estates,
Roanoke, Roanoke County, Virginia, United States,**

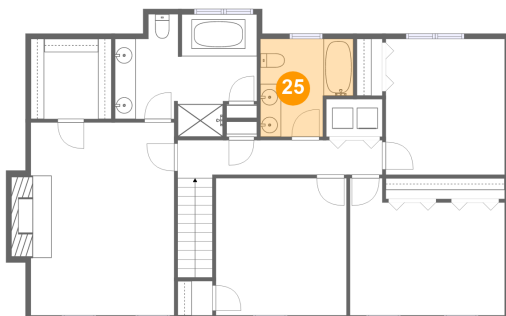
24 Floor 3 - Bath



Dimensions: 13'8" x 11'9"
Area: 129 sq. ft
Counted as living area: Yes

Heated: Yes
Finished: Yes
Enclosed: Yes
Contiguous: Yes
Permitted: Yes
Wet space: Yes
Addition: No
Conversion: No

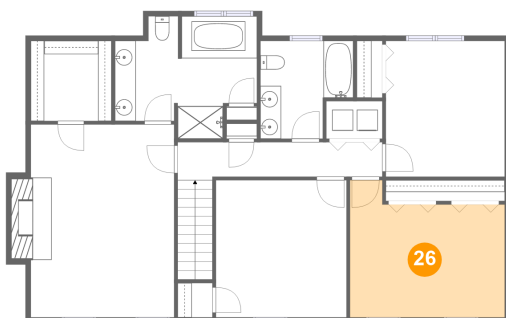
25 Floor 3 - Bath



Dimensions: 8'11" x 9'5"
Area: 72 sq. ft
Counted as living area: Yes

Heated: Yes
Finished: Yes
Enclosed: Yes
Contiguous: Yes
Permitted: Yes
Wet space: Yes
Addition: No
Conversion: No

26 Floor 3 - Bedroom

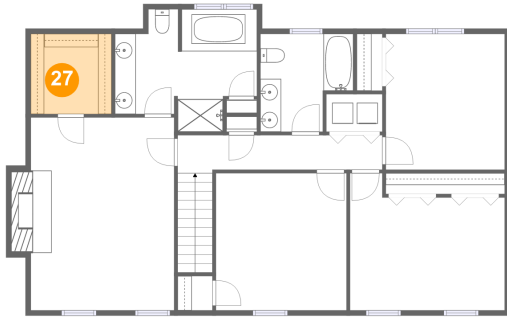


Dimensions: 14'10" x 13'2"
Area: 168 sq. ft
Counted as living area: Yes

Heated: Yes
Finished: Yes
Enclosed: Yes
Contiguous: Yes
Permitted: Yes
Wet space: No
Addition: No
Conversion: No

6467 Poages Mill Drive, Poages Mill Estates, Roanoke, Roanoke County, Virginia, United States,

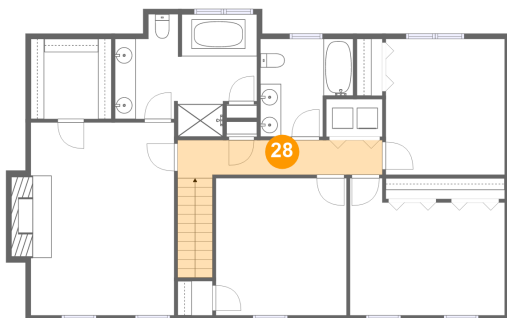
27 Floor 3 - Cl



Dimensions: 7'9" x 7'8"
Area: 59 sq. ft
Counted as living area: Yes

Heated: Yes
Finished: Yes
Enclosed: Yes
Contiguous: Yes
Permitted: Yes
Wet space: No
Addition: No
Conversion: No

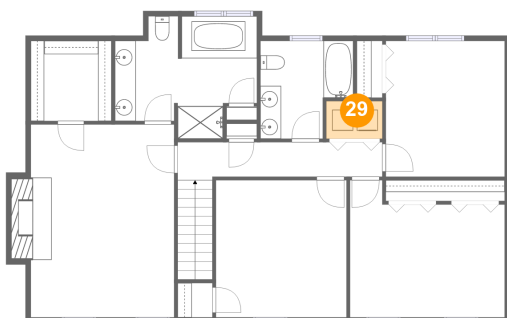
28 Floor 3 - Hall



Dimensions: 19'8" x 3'8"
Area: 98 sq. ft
Counted as living area: Yes

Heated: Yes
Finished: Yes
Enclosed: Yes
Contiguous: Yes
Permitted: Yes
Wet space: No
Addition: No
Conversion: No

29 Floor 3 - Utility

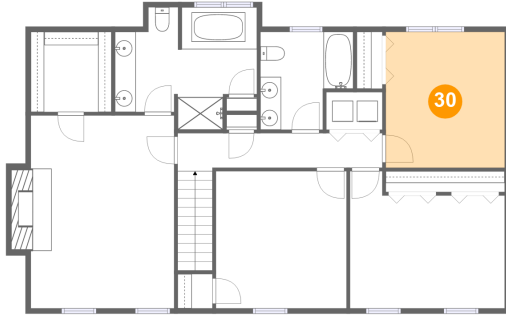


Dimensions: 5'5" x 3'7"
Area: 19 sq. ft
Counted as living area: Yes

Heated: Yes
Finished: Yes
Enclosed: Yes
Contiguous: Yes
Permitted: Yes
Wet space: No
Addition: No
Conversion: No

**6467 Poages Mill Drive, Poages Mill Estates,
Roanoke, Roanoke County, Virginia, United States,**

30 Floor 3 - Bedroom



Dimensions: 11'5" x 13'0"
Area: 149 sq. ft
Counted as living area: Yes

Heated: Yes
Finished: Yes
Enclosed: Yes
Contiguous: Yes
Permitted: Yes
Wet space: No
Addition: No
Conversion: No