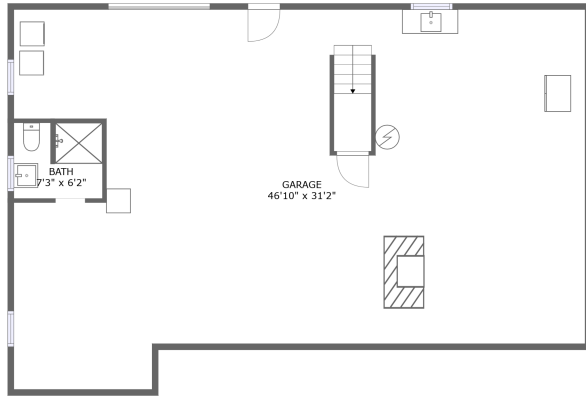
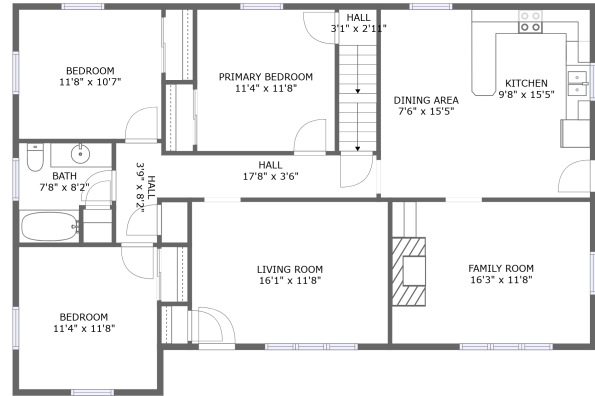


750 Byrds Mill Road, Glade Hill, Franklin County, Virginia, United States, 24092




LOWER LEVEL



ENTRY LEVEL

Property summary

 **1** Garages

 **3** Bedrooms

 **2** Bathrooms

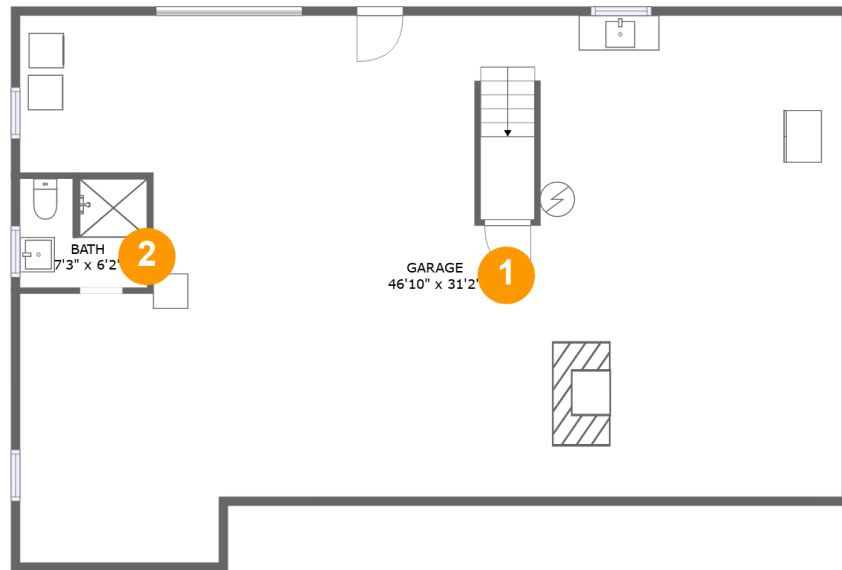
 **0** Half baths

 **2** Floors

 **1,409** Gross living area sqft

 **2,819** Total sqft

**750 Byrds Mill Road, Glade Hill, Franklin County,
Virginia, United States, 24092**



Room dimensions

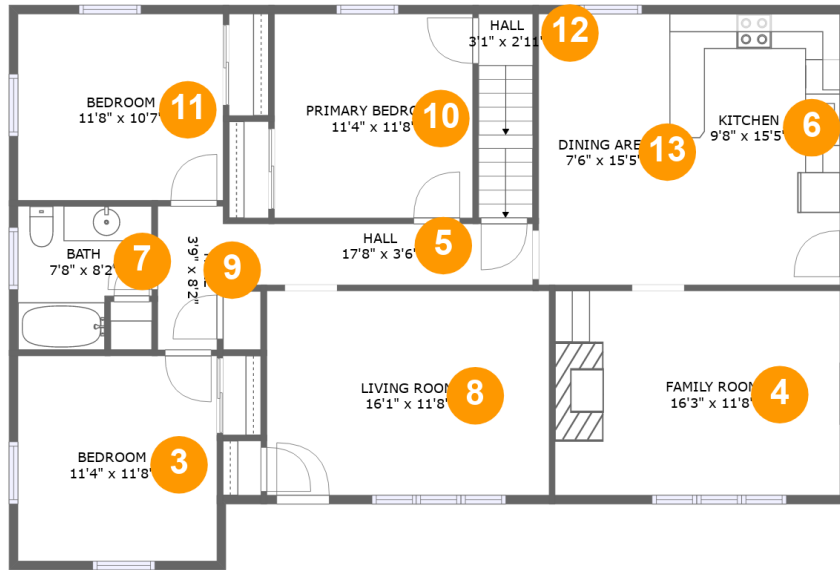
Floor 1

Total sqft: 1410

Living area: 0

#		Dimensions	sqft	Counted as living area
1	Garage	46'10" x 31'2"	1278 sq. ft	No
2	Bath	7'3" x 6'2"	44 sq. ft	No

750 Byrds Mill Road, Glade Hill, Franklin County, Virginia, United States, 24092



Room dimensions

Floor 2

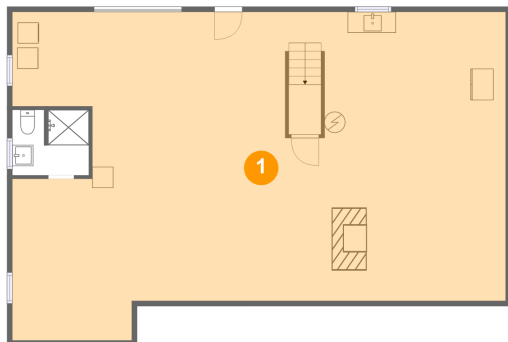
Total sqft: 1409

Living area: 1409

#		Dimensions	sqft	Counted as living area
3	Bedroom	11'4" x 11'8"	133 sq. ft	Yes
4	Living Room	16'3" x 11'8"	190 sq. ft	Yes
5	Hall	17'8" x 3'6"	62 sq. ft	Yes
6	Kitchen	9'8" x 15'5"	150 sq. ft	Yes
7	Bath	7'8" x 8'2"	54 sq. ft	Yes
8	Living Room	16'1" x 11'8"	188 sq. ft	Yes
9	Hall	3'9" x 8'2"	29 sq. ft	Yes
10	Bedroom	11'4" x 11'8"	132 sq. ft	Yes
11	Bedroom	11'8" x 10'7"	124 sq. ft	Yes
12	Hall	3'1" x 2'11"	36 sq. ft	Yes
13	Dining Room	7'6" x 15'5"	116 sq. ft	Yes

750 Byrds Mill Road, Glade Hill, Franklin County, Virginia, United States, 24092

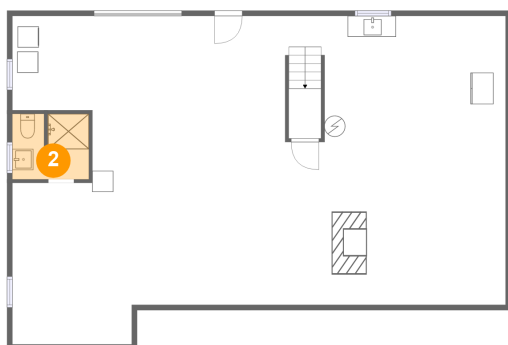
1 Floor 1 - Garage



Dimensions: 46'10" x 31'2"
Area: 1278 sq. ft
Counted as living area: No

Heated: No
Finished: No
Enclosed: Yes
Contiguous: Yes
Permitted: Yes
Wet space: No
Addition: No
Conversion: No

2 Floor 1 - Bath

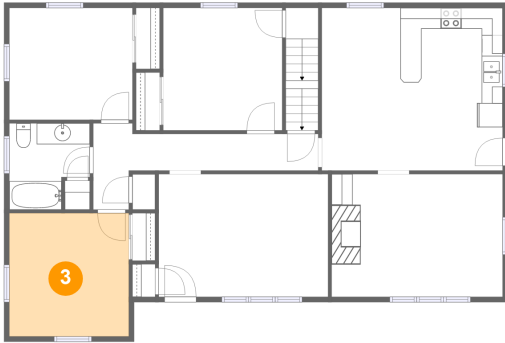


Dimensions: 7'3" x 6'2"
Area: 44 sq. ft
Counted as living area: No

Heated: No
Finished: No
Enclosed: Yes
Contiguous: Yes
Permitted: Yes
Wet space: Yes
Addition: No
Conversion: No

750 Byrds Mill Road, Glade Hill, Franklin County,
Virginia, United States, 24092

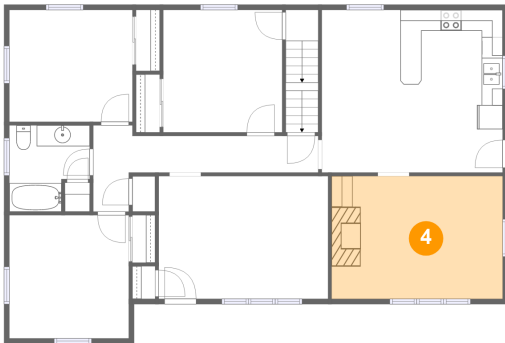
3 Floor 2 - Bedroom



Dimensions: 11'4" x 11'8"
Area: 133 sq. ft
Counted as living area: Yes

Heated: Yes
Finished: Yes
Enclosed: Yes
Contiguous: Yes
Permitted: Yes
Wet space: No
Addition: No
Conversion: No

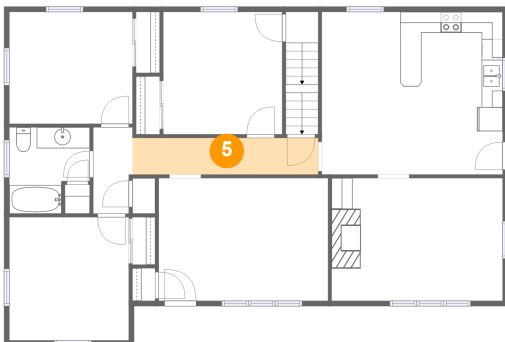
4 Floor 2 - Living Room



Dimensions: 16'3" x 11'8"
Area: 190 sq. ft
Counted as living area: Yes

Heated: Yes
Finished: Yes
Enclosed: Yes
Contiguous: Yes
Permitted: Yes
Wet space: No
Addition: No
Conversion: No

5 Floor 2 - Hall

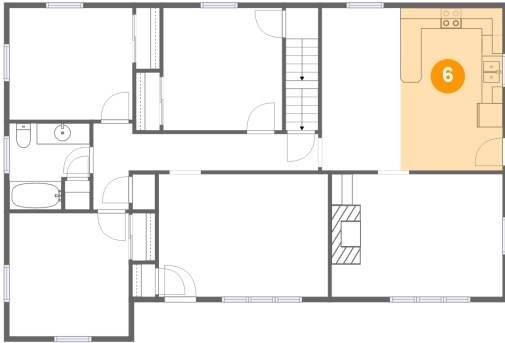


Dimensions: 17'8" x 3'6"
Area: 62 sq. ft
Counted as living area: Yes

Heated: Yes
Finished: Yes
Enclosed: Yes
Contiguous: Yes
Permitted: Yes
Wet space: No
Addition: No
Conversion: No

**750 Byrds Mill Road, Glade Hill, Franklin County,
Virginia, United States, 24092**

6 Floor 2 - Kitchen



Dimensions: 9'8" x 15'5"
Area: 150 sq. ft
Counted as living area: Yes

Heated: Yes
Finished: Yes
Enclosed: Yes
Contiguous: Yes
Permitted: Yes
Wet space: No
Addition: No
Conversion: No

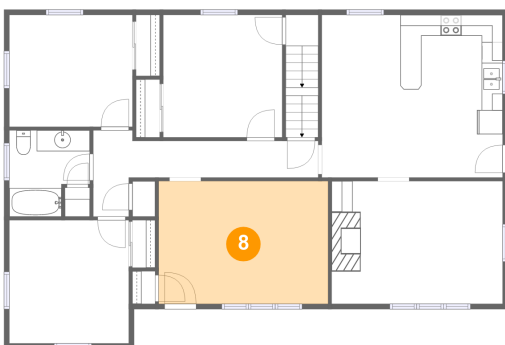
7 Floor 2 - Bath



Dimensions: 7'8" x 8'2"
Area: 54 sq. ft
Counted as living area: Yes

Heated: Yes
Finished: Yes
Enclosed: Yes
Contiguous: Yes
Permitted: Yes
Wet space: Yes
Addition: No
Conversion: No

8 Floor 2 - Living Room

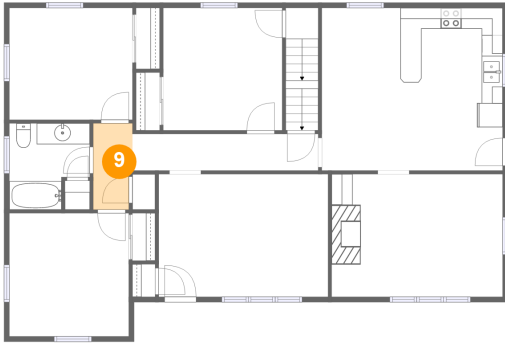


Dimensions: 16'1" x 11'8"
Area: 188 sq. ft
Counted as living area: Yes

Heated: Yes
Finished: Yes
Enclosed: Yes
Contiguous: Yes
Permitted: Yes
Wet space: No
Addition: No
Conversion: No

**750 Byrds Mill Road, Glade Hill, Franklin County,
Virginia, United States, 24092**

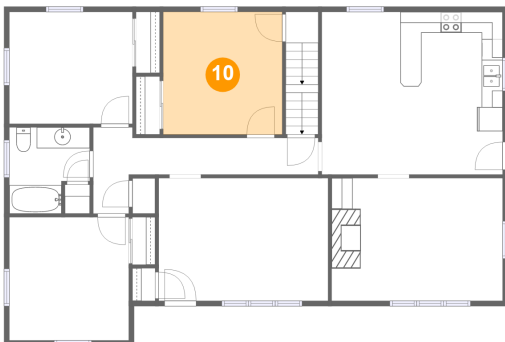
9 Floor 2 - Hall



Dimensions: 3'9" x 8'2"
Area: 29 sq. ft
Counted as living area: Yes

Heated: Yes
Finished: Yes
Enclosed: Yes
Contiguous: Yes
Permitted: Yes
Wet space: No
Addition: No
Conversion: No

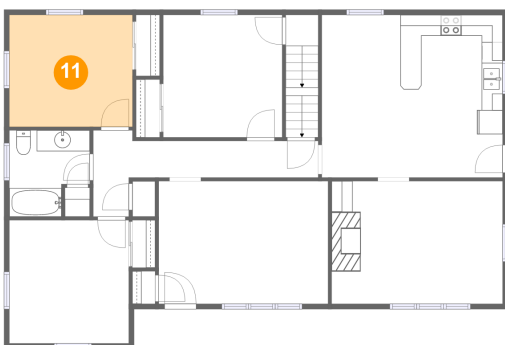
10 Floor 2 - Bedroom



Dimensions: 11'4" x 11'8"
Area: 132 sq. ft
Counted as living area: Yes

Heated: Yes
Finished: Yes
Enclosed: Yes
Contiguous: Yes
Permitted: Yes
Wet space: No
Addition: No
Conversion: No

11 Floor 2 - Bedroom

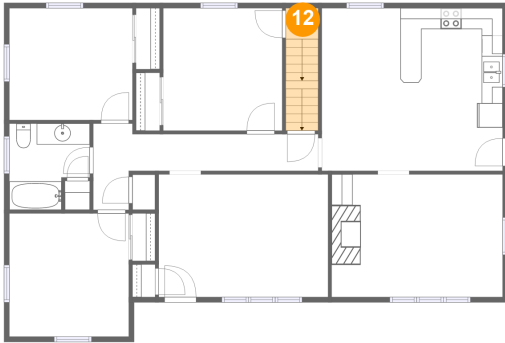


Dimensions: 11'8" x 10'7"
Area: 124 sq. ft
Counted as living area: Yes

Heated: Yes
Finished: Yes
Enclosed: Yes
Contiguous: Yes
Permitted: Yes
Wet space: No
Addition: No
Conversion: No

750 Byrds Mill Road, Glade Hill, Franklin County,
Virginia, United States, 24092

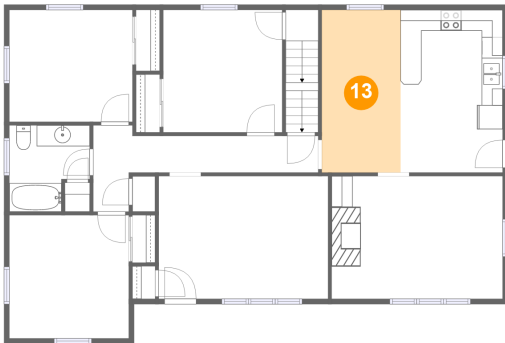
12 Floor 2 - Hall



Dimensions: 3'1" x 2'11"
Area: 36 sq. ft
Counted as living area: Yes

Heated: Yes
Finished: Yes
Enclosed: Yes
Contiguous: Yes
Permitted: Yes
Wet space: No
Addition: No
Conversion: No

13 Floor 2 - Dining Room



Dimensions: 7'6" x 15'5"
Area: 116 sq. ft
Counted as living area: Yes

Heated: Yes
Finished: Yes
Enclosed: Yes
Contiguous: Yes
Permitted: Yes
Wet space: No
Addition: No
Conversion: No