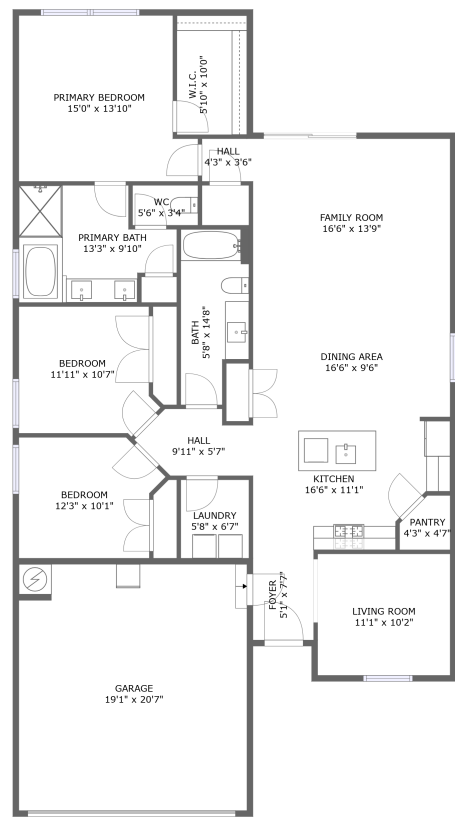


Home report

15015 Demarie Lane, Athens, Limestone County, Alabama,
United States, 35613



FLOOR 1


Total Area: 1731 sq. ft

Floor 1: 1731 sq. ft

Excluded: Garage 392 sq. ft

Property summary

 1 Floors

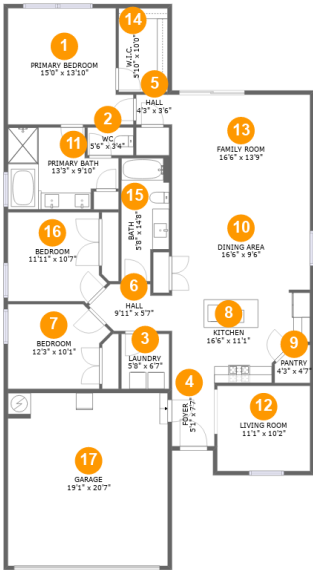
 3 Bedrooms

 2 Bathrooms

 1 Garages

Home report

15015 Demarie Lane, Athens, Limestone County, Alabama,
United States, 35613



Room dimensions

Floor 1 Total:1731sqft Excluded: 392sqft

#		Max Dimensions	sqft	Included
1	Primary Bedroom	15'0" x 13'10"	187 sq. ft	Yes
2	WC	5'6" x 3'4"	18 sq. ft	Yes
3	Laundry	5'8" x 6'7"	37 sq. ft	Yes
4	Foyer	5'1" x 7'7"	38 sq. ft	Yes
5	Hall	4'3" x 3'6"	15 sq. ft	Yes
6	Hall	9'11" x 5'7"	44 sq. ft	Yes
7	Bedroom	12'3" x 10'1"	111 sq. ft	Yes
8	Kitchen	16'6" x 11'1"	164 sq. ft	Yes
9	Pantry	4'3" x 4'7"	17 sq. ft	Yes
10	Dining Area	16'6" x 9'6"	157 sq. ft	Yes
11	Primary Bath	13'3" x 9'10"	107 sq. ft	Yes

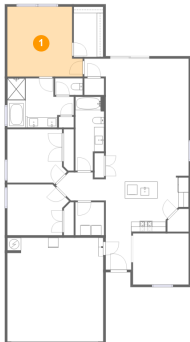
Home report

**15015 Demarie Lane, Athens, Limestone County, Alabama,
United States, 35613**

#		Max Dimensions	sqft	Included
12	Living Room	11'1" x 10'2"	113 sq. ft	Yes
13	Family Room	16'6" x 13'9"	227 sq. ft	Yes
14	W.I.C.	5'10" x 10'0"	59 sq. ft	Yes
15	Bath	5'8" x 14'8"	75 sq. ft	Yes
16	Bedroom	11'11" x 10'7"	116 sq. ft	Yes
17	Garage	19'1" x 20'7"	392 sq. ft	No

15015 Demarie Lane, Athens, Limestone County, Alabama,
United States, 35613

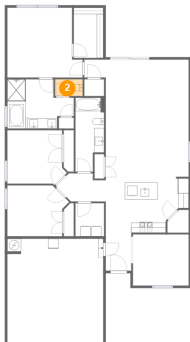
1 Floor 1 - Primary Bedroom



Max Dimensions: 15'0" x 13'10"
Calculated Area: 187 sq. ft
Included: Yes

Heated: Yes
Finished: Yes
Enclosed: Yes
Contiguous: Yes
Permitted: Yes
Wet space: No
Addition: No
Conversion: No

2 Floor 1 - WC



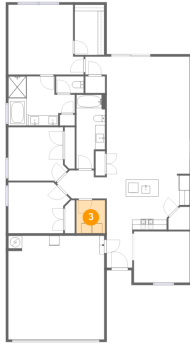
Max Dimensions: 5'6" x 3'4"
Calculated Area: 18 sq. ft
Included: Yes

Heated: Yes
Finished: Yes
Enclosed: Yes
Contiguous: Yes
Permitted: Yes
Wet space: Yes
Addition: No
Conversion: No

Home report

15015 Demarie Lane, Athens, Limestone County, Alabama,
United States, 35613

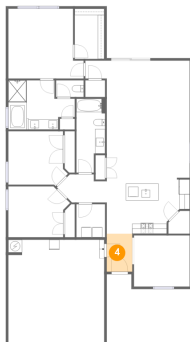
3 Floor 1 - Laundry



Max Dimensions: 5'8" x 6'7"
Calculated Area: 37 sq. ft
Included: Yes

Heated: Yes
Finished: Yes
Enclosed: Yes
Contiguous: Yes
Permitted: Yes
Wet space: No
Addition: No
Conversion: No

4 Floor 1 - Foyer



Max Dimensions: 5'1" x 7'7"
Calculated Area: 38 sq. ft
Included: Yes

Heated: Yes
Finished: Yes
Enclosed: Yes
Contiguous: Yes
Permitted: Yes
Wet space: No
Addition: No
Conversion: No

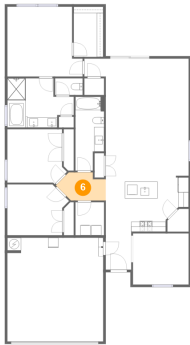
5 Floor 1 - Hall



Max Dimensions: 4'3" x 3'6"
Calculated Area: 15 sq. ft
Included: Yes

Heated: Yes
Finished: Yes
Enclosed: Yes
Contiguous: Yes
Permitted: Yes
Wet space: No
Addition: No
Conversion: No

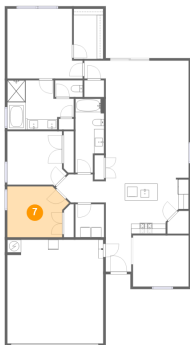
6 Floor 1 - Hall



Max Dimensions: 9'11" x 5'7"
Calculated Area: 44 sq. ft
Included: Yes

Heated: Yes
Finished: Yes
Enclosed: Yes
Contiguous: Yes
Permitted: Yes
Wet space: No
Addition: No
Conversion: No

7 Floor 1 - Bedroom



Max Dimensions: 12'3" x 10'1"
Calculated Area: 111 sq. ft
Included: Yes

Heated: Yes
Finished: Yes
Enclosed: Yes
Contiguous: Yes
Permitted: Yes
Wet space: No
Addition: No
Conversion: No

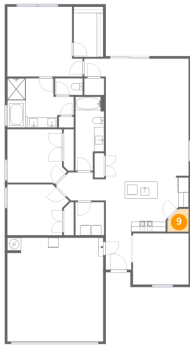
8 Floor 1 - Kitchen



Max Dimensions: 16'6" x 11'1"
Calculated Area: 164 sq. ft
Included: Yes

Heated: Yes
Finished: Yes
Enclosed: Yes
Contiguous: Yes
Permitted: Yes
Wet space: No
Addition: No
Conversion: No

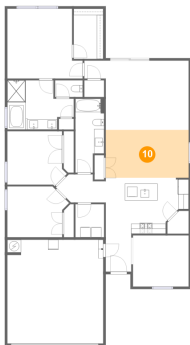
9 Floor 1 - Pantry



Max Dimensions: 4'3" x 4'7"
Calculated Area: 17 sq. ft
Included: Yes

Heated: Yes
Finished: Yes
Enclosed: Yes
Contiguous: Yes
Permitted: Yes
Wet space: No
Addition: No
Conversion: No

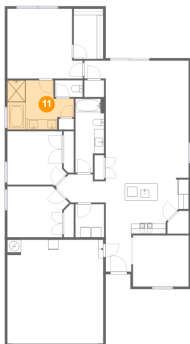
10 Floor 1 - Dining Area



Max Dimensions: 16'6" x 9'6"
Calculated Area: 157 sq. ft
Included: Yes

Heated: Yes
Finished: Yes
Enclosed: Yes
Contiguous: Yes
Permitted: Yes
Wet space: No
Addition: No
Conversion: No

11 Floor 1 - Primary Bath

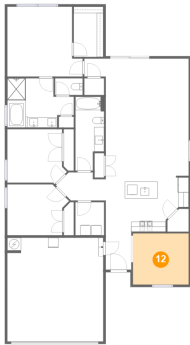


Max Dimensions: 13'3" x 9'10"
Calculated Area: 107 sq. ft
Included: Yes

Heated: Yes
Finished: Yes
Enclosed: Yes
Contiguous: Yes
Permitted: Yes
Wet space: Yes
Addition: No
Conversion: No

15015 Demarie Lane, Athens, Limestone County, Alabama,
United States, 35613

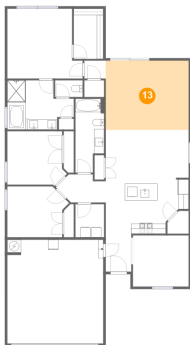
12 Floor 1 - Living Room



Max Dimensions: 11'1" x 10'2"
Calculated Area: 113 sq. ft
Included: Yes

Heated: Yes
Finished: Yes
Enclosed: Yes
Contiguous: Yes
Permitted: Yes
Wet space: No
Addition: No
Conversion: No

13 Floor 1 - Family Room



Max Dimensions: 16'6" x 13'9"
Calculated Area: 227 sq. ft
Included: Yes

Heated: Yes
Finished: Yes
Enclosed: Yes
Contiguous: Yes
Permitted: Yes
Wet space: No
Addition: No
Conversion: No

14 Floor 1 - W.I.C.



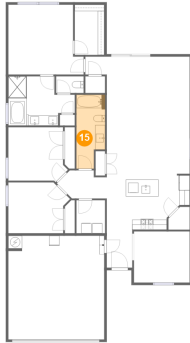
Max Dimensions: 5'10" x 10'0"
Calculated Area: 59 sq. ft
Included: Yes

Heated: Yes
Finished: Yes
Enclosed: Yes
Contiguous: Yes
Permitted: Yes
Wet space: No
Addition: No
Conversion: No

Home report

15015 Demarie Lane, Athens, Limestone County, Alabama,
United States, 35613

15 Floor 1 - Bath



Max Dimensions: 5'8" x 14'8"
Calculated Area: 75 sq. ft
Included: Yes

Heated: Yes
Finished: Yes
Enclosed: Yes
Contiguous: Yes
Permitted: Yes
Wet space: Yes
Addition: No
Conversion: No

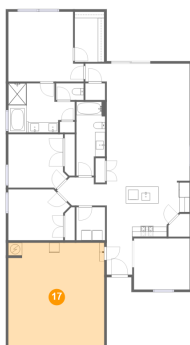
16 Floor 1 - Bedroom



Max Dimensions: 11'11" x 10'7"
Calculated Area: 116 sq. ft
Included: Yes

Heated: Yes
Finished: Yes
Enclosed: Yes
Contiguous: Yes
Permitted: Yes
Wet space: No
Addition: No
Conversion: No

17 Floor 1 - Garage



Max Dimensions: 19'1" x 20'7"
Calculated Area: 392 sq. ft
Included: No

Heated: No
Finished: No
Enclosed: Yes
Contiguous: Yes
Permitted: Yes
Wet space: No
Addition: No
Conversion: No