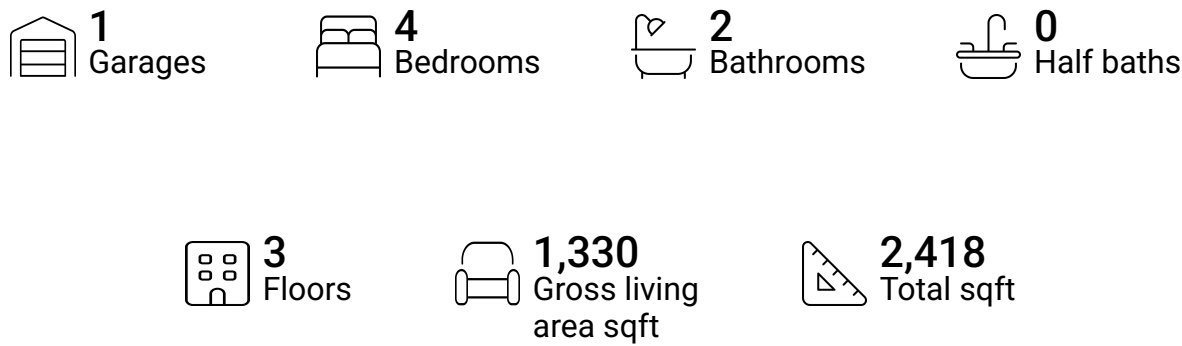


Home report

240 Crescent Pine Drive ,Verona,PA,US

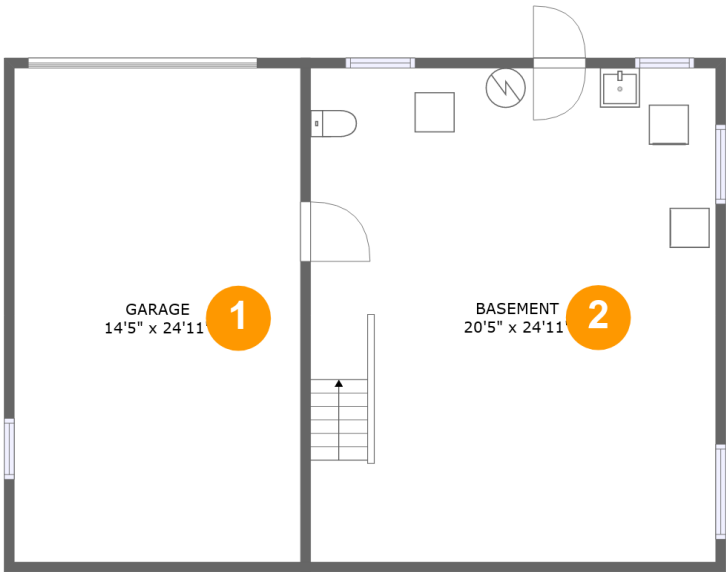


Property summary



Home report

240 Crescent Pine Drive ,Verona,PA,US



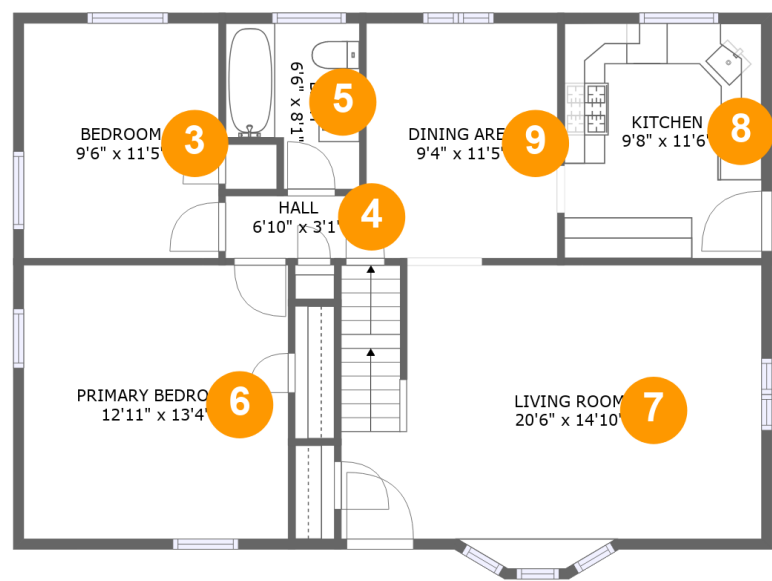
Room dimensions

Floor 1 Total sqft: 943 Living area: 0

#		Dimensions	sqft	Counted as living area
1	Garage	14'5" x 24'11"	360 sq. ft	No
2	Basement	20'5" x 24'11"	509 sq. ft	No

Home report

240 Crescent Pine Drive ,Verona,PA,US



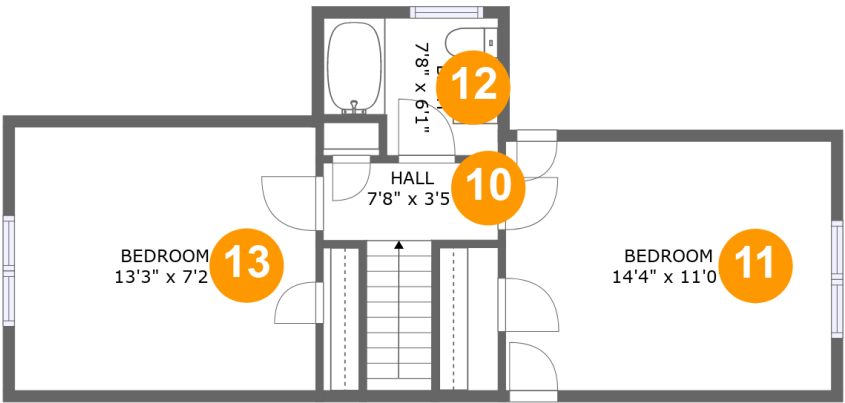
Room dimensions

Floor 2 Total sqft: 976 Living area: 976

#		Dimensions	sqft	Counted as living area
3	Bedroom	9'6" x 11'5"	109 sq. ft	Yes
4	Hall	6'10" x 3'1"	21 sq. ft	Yes
5	Bath	6'6" x 8'1"	46 sq. ft	Yes
6	Primary Bedroom	12'11" x 13'4"	172 sq. ft	Yes
7	Living Room	20'6" x 14'10"	275 sq. ft	Yes
8	Kitchen	9'8" x 11'6"	110 sq. ft	Yes
9	Dining Area	9'4" x 11'5"	107 sq. ft	Yes

Home report

240 Crescent Pine Drive ,Verona,PA,US

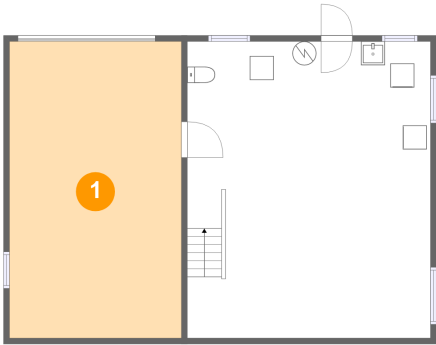


Room dimensions

Floor 3 Total sqft: 499 Living area: 354

#		Dimensions	sqft	Counted as living area
10	Hall	7'8" x 3'5"	45 sq. ft	Yes
11	Bedroom	14'4" x 11'0"	104 sq. ft	Yes
12	Bath	7'8" x 6'1"	42 sq. ft	Yes
13	Bedroom	13'3" x 7'2"	95 sq. ft	Yes

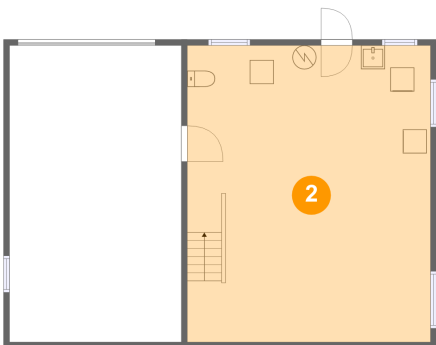
1 Floor 1 - Garage



Dimensions: 14'5" x 24'11"
Area: 360 sq. ft
Counted as living area: No

Heated: No
Finished: No
Enclosed: Yes
Contiguous: Yes
Permitted: Yes
Wet space: No
Addition: No
Conversion: No

2 Floor 1 - Basement



Dimensions: 20'5" x 24'11"
Area: 509 sq. ft
Counted as living area: No

Heated: Yes
Finished: Yes
Enclosed: Yes
Contiguous: No
Permitted: Yes
Wet space: No
Addition: No
Conversion: No

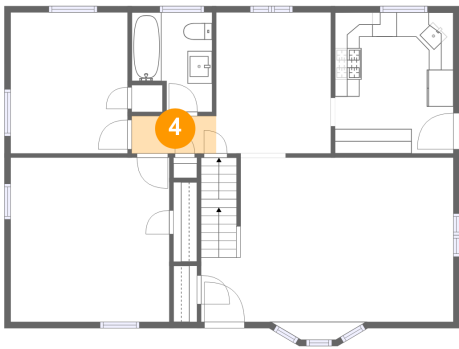
3 Floor 2 - Bedroom



Dimensions: 9'6" x 11'5"
Area: 109 sq. ft
Counted as living area: Yes

Heated: Yes
Finished: Yes
Enclosed: Yes
Contiguous: Yes
Permitted: Yes
Wet space: No
Addition: No
Conversion: No

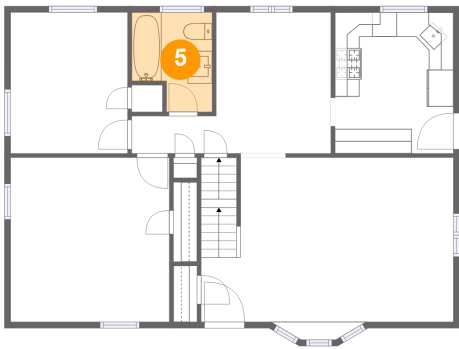
4 Floor 2 - Hall



Dimensions: 6'10" x 3'1"
Area: 21 sq. ft
Counted as living area: Yes

Heated: Yes
Finished: Yes
Enclosed: Yes
Contiguous: Yes
Permitted: Yes
Wet space: No
Addition: No
Conversion: No

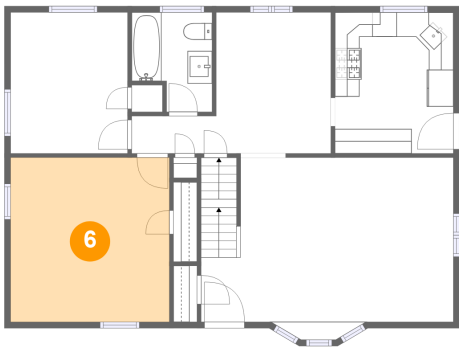
5 Floor 2 - Bath



Dimensions: 6'6" x 8'1"
Area: 46 sq. ft
Counted as living area: Yes

Heated: Yes
Finished: Yes
Enclosed: Yes
Contiguous: Yes
Permitted: Yes
Wet space: Yes
Addition: No
Conversion: No

6 Floor 2 - Primary Bedroom



Dimensions: 12'11" x 13'4"
Area: 172 sq. ft
Counted as living area: Yes

Heated: Yes
Finished: Yes
Enclosed: Yes
Contiguous: Yes
Permitted: Yes
Wet space: No
Addition: No
Conversion: No

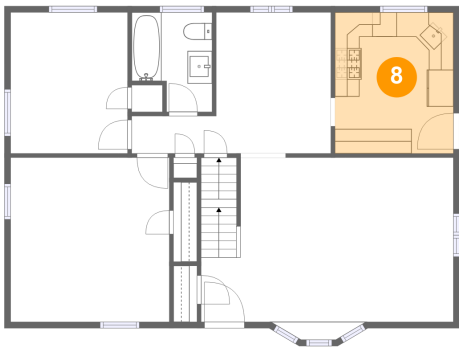
7 Floor 2 - Living Room



Dimensions: 20'6" x 14'10"
Area: 275 sq. ft
Counted as living area: Yes

Heated: Yes
Finished: Yes
Enclosed: Yes
Contiguous: Yes
Permitted: Yes
Wet space: No
Addition: No
Conversion: No

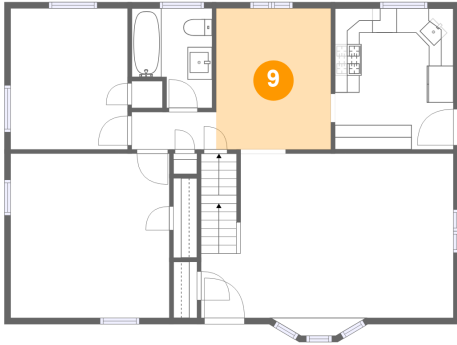
8 Floor 2 - Kitchen



Dimensions: 9'8" x 11'6"
Area: 110 sq. ft
Counted as living area: Yes

Heated: Yes
Finished: Yes
Enclosed: Yes
Contiguous: Yes
Permitted: Yes
Wet space: No
Addition: No
Conversion: No

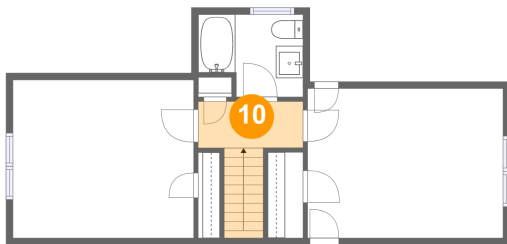
9 Floor 2 - Dining Area



Dimensions: 9'4" x 11'5"
Area: 107 sq. ft
Counted as living area: Yes

Heated: Yes
Finished: Yes
Enclosed: Yes
Contiguous: Yes
Permitted: Yes
Wet space: No
Addition: No
Conversion: No

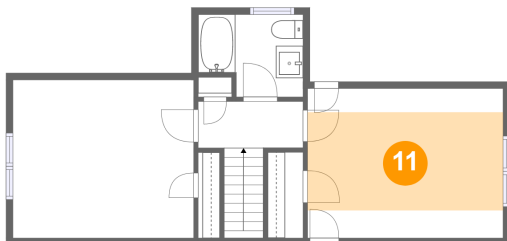
10 Floor 3 - Hall



Dimensions: 7'8" x 3'5"
Area: 45 sq. ft
Counted as living area: Yes

Heated: Yes
Finished: Yes
Enclosed: Yes
Contiguous: Yes
Permitted: Yes
Wet space: No
Addition: No
Conversion: No

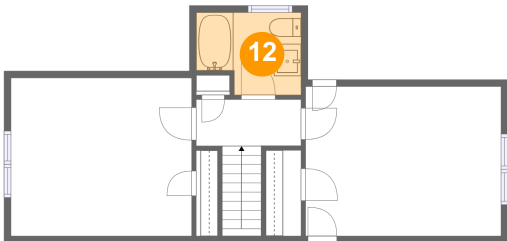
11 Floor 3 - Bedroom



Dimensions: 14'4" x 11'0"
Area: 104 sq. ft
Counted as living area: Yes

Heated: Yes
Finished: Yes
Enclosed: Yes
Contiguous: Yes
Permitted: Yes
Wet space: No
Addition: No
Conversion: No

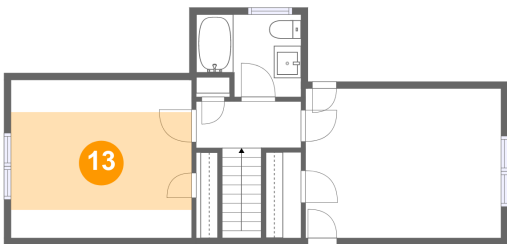
12 Floor 3 - Bath



Dimensions: 7'8" x 6'1"
Area: 42 sq. ft
Counted as living area: Yes

Heated: Yes
Finished: Yes
Enclosed: Yes
Contiguous: Yes
Permitted: Yes
Wet space: Yes
Addition: No
Conversion: No

13 Floor 3 - Bedroom



Dimensions: 13'3" x 7'2"
Area: 95 sq. ft
Counted as living area: Yes

Heated: Yes
Finished: Yes
Enclosed: Yes
Contiguous: Yes
Permitted: Yes
Wet space: No
Addition: No
Conversion: No