



Home report


24608 Savannah Trail, Athens, Limestone County, Alabama,  
United States, 35613




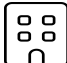
Property summary


 **1** Garages


 **5** Bedrooms

 **4** Bathrooms

 **1** Half baths

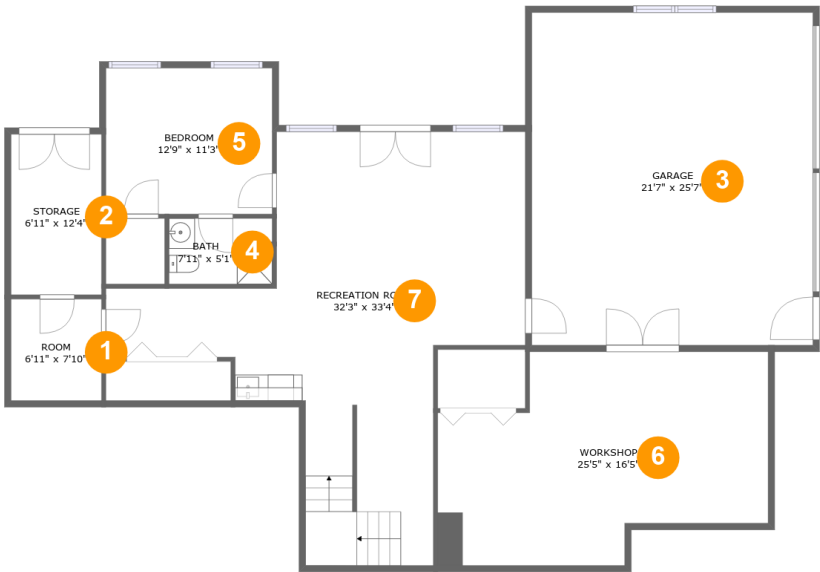
 **3** Floors

 **4,545** Gross living area sqft

 **6,251** Total sqft

Home report

24608 Savannah Trail, Athens, Limestone County, Alabama,  
United States, 35613



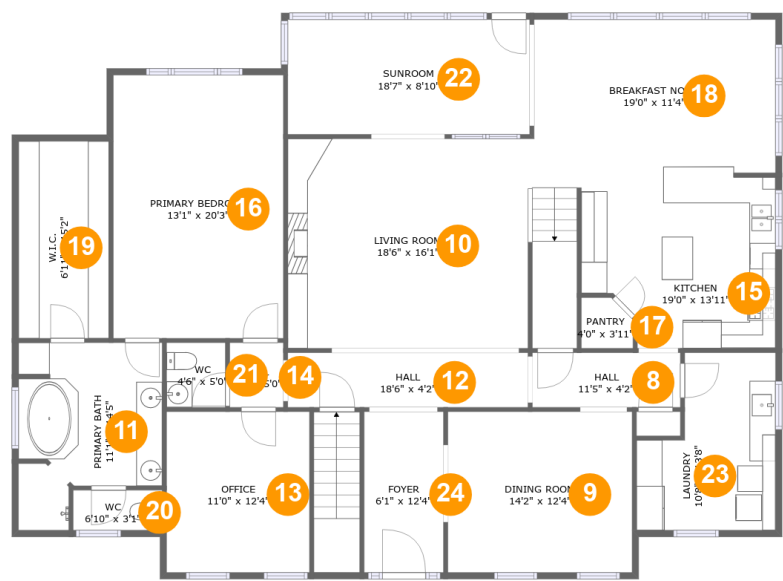
Room dimensions

Floor 1 Total sqft: 2043    Living area: 887

#		Max Dimensions	sqft	Included
1	Room	6'11" x 7'10"	54 sq. ft	No
2	Storage	6'11" x 12'4"	86 sq. ft	No
3	Garage	21'7" x 25'7"	552 sq. ft	No
4	Bath	7'11" x 5'1"	40 sq. ft	Yes
5	Bedroom	12'9" x 11'3"	143 sq. ft	Yes
6	Workshop	25'5" x 16'5"	348 sq. ft	No
7	Recreation Room	32'3" x 33'4"	569 sq. ft	Yes

Home report

24608 Savannah Trail, Athens, Limestone County, Alabama,  
United States, 35613



Room dimensions

Floor 2Total sqft: 2376    Living area: 2376

#		Max Dimensions	sqft	Included
8	Hall	11'5" x 4'2"	48 sq. ft	Yes
9	Dining Room	14'2" x 12'4"	175 sq. ft	Yes
10	Living Room	18'6" x 16'1"	297 sq. ft	Yes
11	Primary Bath	11'1" x 14'5"	133 sq. ft	Yes
12	Hall	18'6" x 4'2"	77 sq. ft	Yes
13	Office	11'0" x 12'4"	136 sq. ft	Yes
14	Hall	4'2" x 5'0"	20 sq. ft	Yes
15	Kitchen	19'0" x 13'11"	241 sq. ft	Yes
16	Primary Bedroom	13'1" x 20'3"	264 sq. ft	Yes
17	Pantry	4'0" x 3'11"	14 sq. ft	Yes
18	Breakfast Nook	19'0" x 11'4"	211 sq. ft	Yes

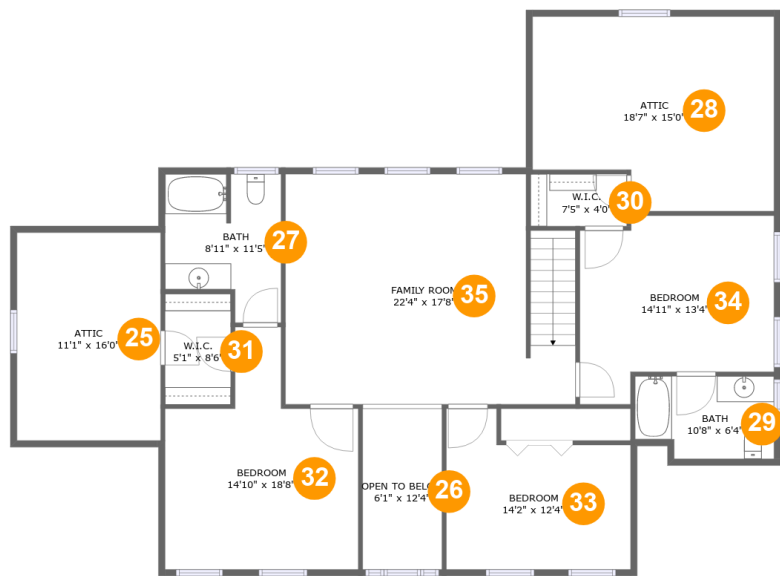
## Home report

**24608 Savannah Trail, Athens, Limestone County, Alabama,  
United States, 35613**

#		Max Dimensions	sqft	Included
19	W.I.C.	6'11" x 15'2"	105 sq. ft	Yes
20	WC	6'10" x 3'1"	21 sq. ft	Yes
21	WC	4'6" x 5'0"	22 sq. ft	Yes
22	Sunroom	18'7" x 8'10"	164 sq. ft	Yes
23	Laundry	10'8" x 13'8"	121 sq. ft	Yes
24	Foyer	6'1" x 12'4"	75 sq. ft	Yes

Home report

24608 Savannah Trail, Athens, Limestone County, Alabama,  
United States, 35613



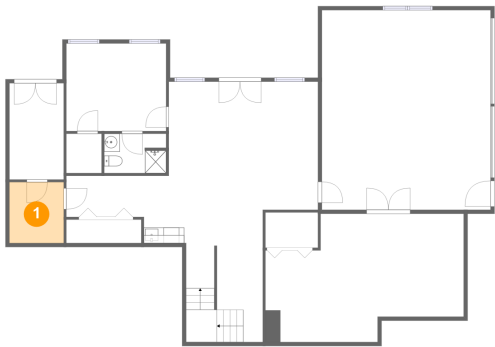
Room dimensions

Floor 3 Total sqft: 1832    Living area: 1282

#		Max Dimensions	sqft	Included
25	Attic	11'1" x 16'0"	177 sq. ft	No
26	Open To Below	6'1" x 12'4"	75 sq. ft	No
27	Bath	8'11" x 11'5"	87 sq. ft	Yes
28	Attic	18'7" x 15'0"	122 sq. ft	No
29	Bath	10'8" x 6'4"	63 sq. ft	Yes
30	W.I.C.	7'5" x 4'0"	30 sq. ft	Yes
31	W.I.C.	5'1" x 8'6"	43 sq. ft	Yes
32	Bedroom	14'10" x 18'8"	206 sq. ft	Yes
33	Bedroom	14'2" x 12'4"	146 sq. ft	Yes
34	Bedroom	14'11" x 13'4"	184 sq. ft	Yes
35	Family Room	22'4" x 17'8"	377 sq. ft	Yes

24608 Savannah Trail, Athens, Limestone County, Alabama,  
United States, 35613

1 Floor 1 - Room



Max Dimensions: 6'11" x 7'10"  
Calculated Area: 54 sq. ft  
Included: No

Heated: No  
Finished: No  
Enclosed: Yes  
Contiguous: Yes  
Permitted: Yes  
Wet space: No  
Addition: No  
Conversion: No

2 Floor 1 - Storage

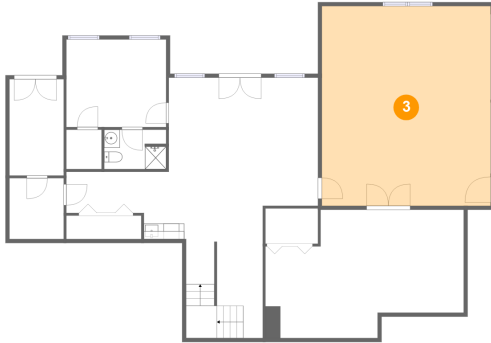


Max Dimensions: 6'11" x 12'4"  
Calculated Area: 86 sq. ft  
Included: No

Heated: No  
Finished: No  
Enclosed: No  
Contiguous: Yes  
Permitted: Yes  
Wet space: No  
Addition: No  
Conversion: No

24608 Savannah Trail, Athens, Limestone County, Alabama,  
United States, 35613

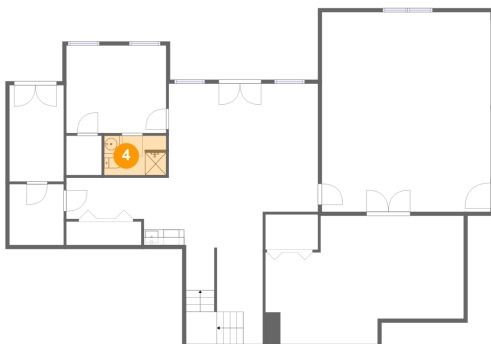
### 3 Floor 1 - Garage



Max Dimensions: 21'7" x 25'7"  
Calculated Area: 552 sq. ft  
Included: No

Heated: No  
Finished: No  
Enclosed: Yes  
Contiguous: Yes  
Permitted: Yes  
Wet space: No  
Addition: No  
Conversion: No

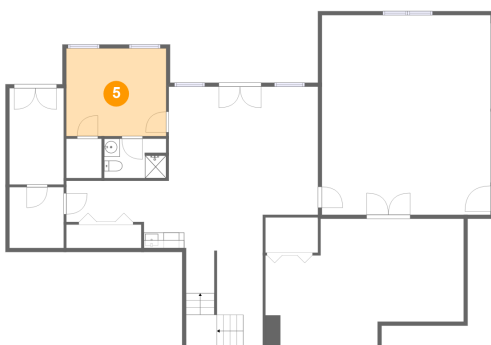
### 4 Floor 1 - Bath



Max Dimensions: 7'11" x 5'1"  
Calculated Area: 40 sq. ft  
Included: Yes

Heated: Yes  
Finished: Yes  
Enclosed: Yes  
Contiguous: Yes  
Permitted: Yes  
Wet space: Yes  
Addition: No  
Conversion: No

### 5 Floor 1 - Bedroom



Max Dimensions: 12'9" x 11'3"  
Calculated Area: 143 sq. ft  
Included: Yes

Heated: Yes  
Finished: Yes  
Enclosed: Yes  
Contiguous: Yes  
Permitted: Yes  
Wet space: No  
Addition: No  
Conversion: No

24608 Savannah Trail, Athens, Limestone County, Alabama,  
United States, 35613

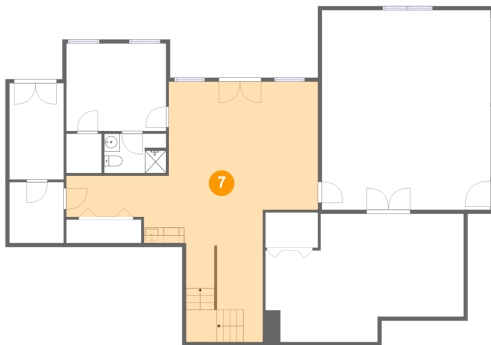
## 6 Floor 1 - Workshop



Max Dimensions: 25'5" x 16'5"  
Calculated Area: 348 sq. ft  
Included: No

Heated: No  
Finished: No  
Enclosed: Yes  
Contiguous: Yes  
Permitted: Yes  
Wet space: No  
Addition: No  
Conversion: No

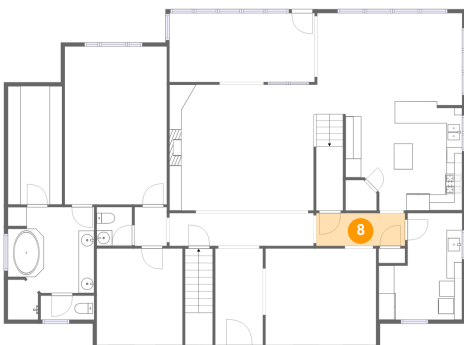
## 7 Floor 1 - Recreation Room



Max Dimensions: 32'3" x 33'4"  
Calculated Area: 569 sq. ft  
Included: Yes

Heated: Yes  
Finished: Yes  
Enclosed: Yes  
Contiguous: Yes  
Permitted: Yes  
Wet space: No  
Addition: No  
Conversion: No

## 8 Floor 2 - Hall



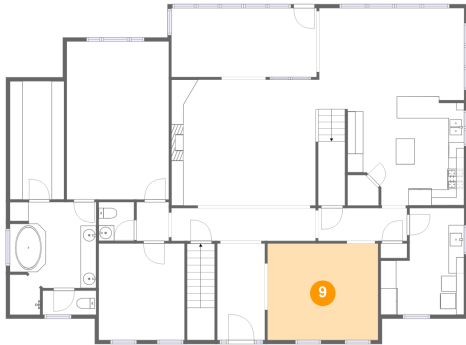
Max Dimensions: 11'5" x 4'2"  
Calculated Area: 48 sq. ft  
Included: Yes

Heated: Yes  
Finished: Yes  
Enclosed: Yes  
Contiguous: Yes  
Permitted: Yes  
Wet space: No  
Addition: No  
Conversion: No



24608 Savannah Trail, Athens, Limestone County, Alabama,  
United States, 35613

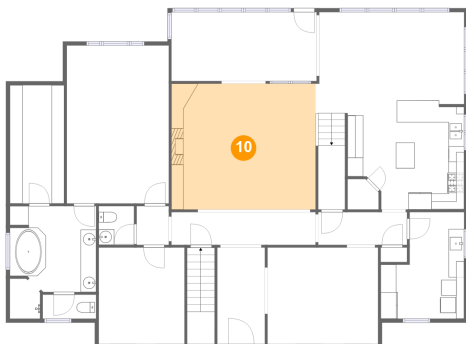
## 9 Floor 2 - Dining Room



Max Dimensions: 14'2" x 12'4"  
Calculated Area: 175 sq. ft  
Included: Yes

Heated: Yes  
Finished: Yes  
Enclosed: Yes  
Contiguous: Yes  
Permitted: Yes  
Wet space: No  
Addition: No  
Conversion: No

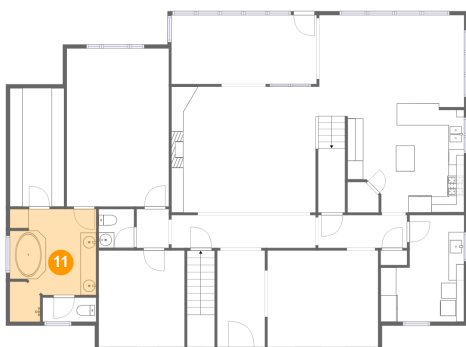
## 10 Floor 2 - Living Room



Max Dimensions: 18'6" x 16'1"  
Calculated Area: 297 sq. ft  
Included: Yes

Heated: Yes  
Finished: Yes  
Enclosed: Yes  
Contiguous: Yes  
Permitted: Yes  
Wet space: No  
Addition: No  
Conversion: No

## 11 Floor 2 - Primary Bath

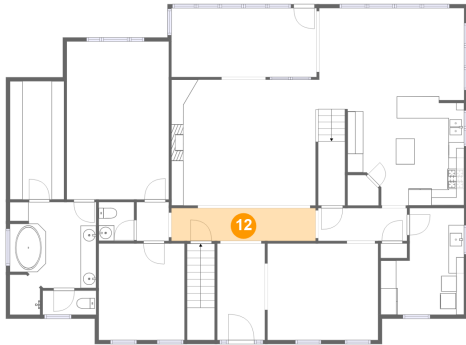


Max Dimensions: 11'1" x 14'5"  
Calculated Area: 133 sq. ft  
Included: Yes

Heated: Yes  
Finished: Yes  
Enclosed: Yes  
Contiguous: Yes  
Permitted: Yes  
Wet space: Yes  
Addition: No  
Conversion: No

24608 Savannah Trail, Athens, Limestone County, Alabama,  
United States, 35613

## 12 Floor 2 - Hall



Max Dimensions: 18'6" x 4'2"  
Calculated Area: 77 sq. ft  
Included: Yes

Heated: Yes  
Finished: Yes  
Enclosed: Yes  
Contiguous: Yes  
Permitted: Yes  
Wet space: No  
Addition: No  
Conversion: No

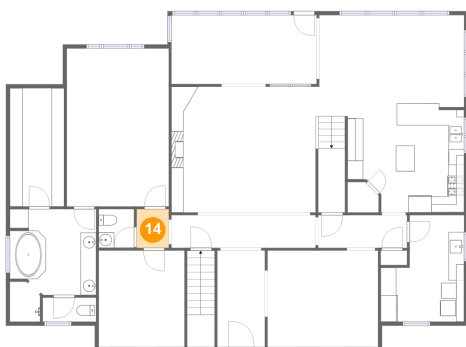
## 13 Floor 2 - Office



Max Dimensions: 11'0" x 12'4"  
Calculated Area: 136 sq. ft  
Included: Yes

Heated: Yes  
Finished: Yes  
Enclosed: Yes  
Contiguous: Yes  
Permitted: Yes  
Wet space: No  
Addition: No  
Conversion: No

## 14 Floor 2 - Hall

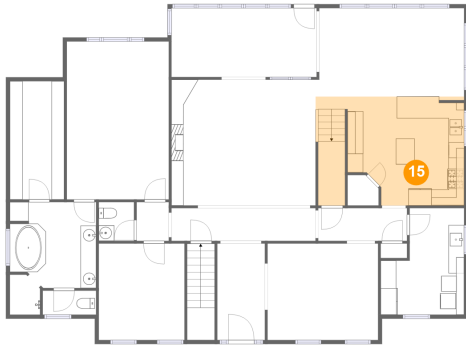


Max Dimensions: 4'2" x 5'0"  
Calculated Area: 20 sq. ft  
Included: Yes

Heated: Yes  
Finished: Yes  
Enclosed: Yes  
Contiguous: Yes  
Permitted: Yes  
Wet space: No  
Addition: No  
Conversion: No

24608 Savannah Trail, Athens, Limestone County, Alabama,  
United States, 35613

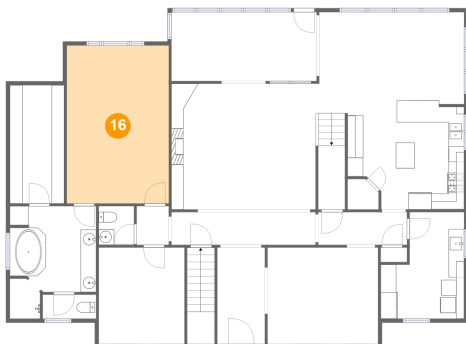
## 15 Floor 2 - Kitchen



Max Dimensions: 19'0" x 13'11"  
Calculated Area: 241 sq. ft  
Included: Yes

Heated: Yes  
Finished: Yes  
Enclosed: Yes  
Contiguous: Yes  
Permitted: Yes  
Wet space: No  
Addition: No  
Conversion: No

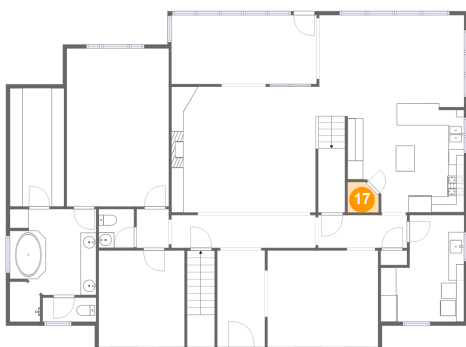
## 16 Floor 2 - Primary Bedroom



Max Dimensions: 13'1" x 20'3"  
Calculated Area: 264 sq. ft  
Included: Yes

Heated: Yes  
Finished: Yes  
Enclosed: Yes  
Contiguous: Yes  
Permitted: Yes  
Wet space: No  
Addition: No  
Conversion: No

## 17 Floor 2 - Pantry



Max Dimensions: 4'0" x 3'11"  
Calculated Area: 14 sq. ft  
Included: Yes

Heated: Yes  
Finished: Yes  
Enclosed: Yes  
Contiguous: Yes  
Permitted: Yes  
Wet space: No  
Addition: No  
Conversion: No

24608 Savannah Trail, Athens, Limestone County, Alabama,  
United States, 35613

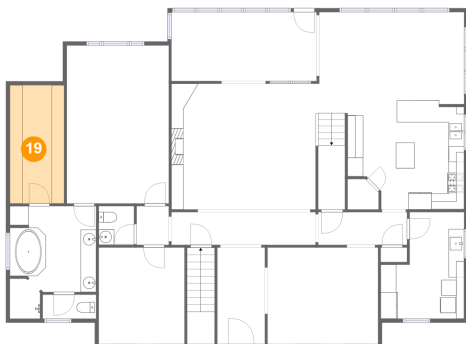
## 18 Floor 2 - Breakfast Nook



Max Dimensions: 19'0" x 11'4"  
Calculated Area: 211 sq. ft  
Included: Yes

Heated: Yes  
Finished: Yes  
Enclosed: Yes  
Contiguous: Yes  
Permitted: Yes  
Wet space: No  
Addition: No  
Conversion: No

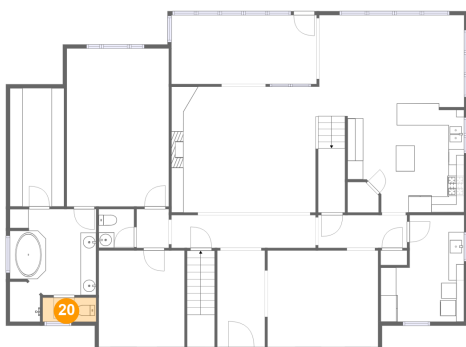
## 19 Floor 2 - W.I.C.



Max Dimensions: 6'11" x 15'2"  
Calculated Area: 105 sq. ft  
Included: Yes

Heated: Yes  
Finished: Yes  
Enclosed: Yes  
Contiguous: Yes  
Permitted: Yes  
Wet space: No  
Addition: No  
Conversion: No

## 20 Floor 2 - WC



Max Dimensions: 6'10" x 3'1"  
Calculated Area: 21 sq. ft  
Included: Yes

Heated: Yes  
Finished: Yes  
Enclosed: Yes  
Contiguous: Yes  
Permitted: Yes  
Wet space: Yes  
Addition: No  
Conversion: No

24608 Savannah Trail, Athens, Limestone County, Alabama,  
United States, 35613

## 21 Floor 2 - WC



Max Dimensions: 4'6" x 5'0"  
Calculated Area: 22 sq. ft  
Included: Yes

Heated: Yes  
Finished: Yes  
Enclosed: Yes  
Contiguous: Yes  
Permitted: Yes  
Wet space: Yes  
Addition: No  
Conversion: No

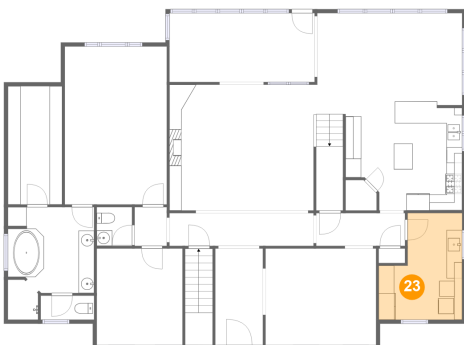
## 22 Floor 2 - Sunroom



Max Dimensions: 18'7" x 8'10"  
Calculated Area: 164 sq. ft  
Included: Yes

Heated: Yes  
Finished: Yes  
Enclosed: Yes  
Contiguous: Yes  
Permitted: Yes  
Wet space: No  
Addition: No  
Conversion: No

## 23 Floor 2 - Laundry

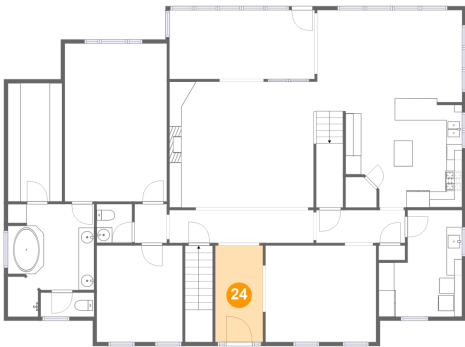


Max Dimensions: 10'8" x 13'8"  
Calculated Area: 121 sq. ft  
Included: Yes

Heated: Yes  
Finished: Yes  
Enclosed: Yes  
Contiguous: Yes  
Permitted: Yes  
Wet space: No  
Addition: No  
Conversion: No

24608 Savannah Trail, Athens, Limestone County, Alabama,  
United States, 35613

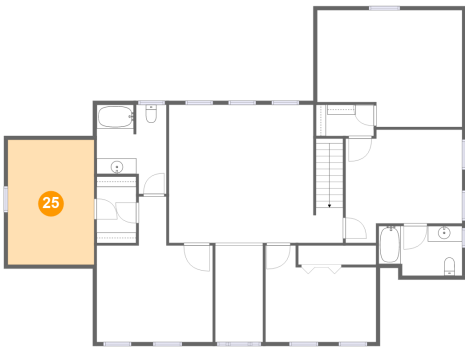
24 Floor 2 - Foyer



Max Dimensions: 6'1" x 12'4"  
Calculated Area: 75 sq. ft  
Included: Yes

Heated: Yes  
Finished: Yes  
Enclosed: Yes  
Contiguous: Yes  
Permitted: Yes  
Wet space: No  
Addition: No  
Conversion: No

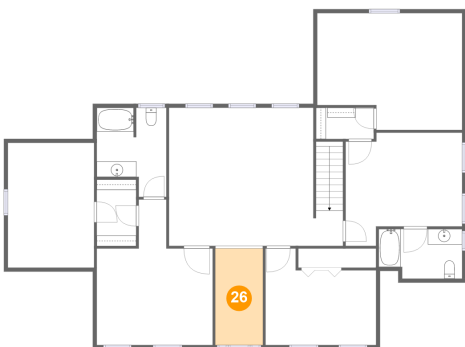
25 Floor 3 - Attic



Max Dimensions: 11'1" x 16'0"  
Calculated Area: 177 sq. ft  
Included: No

Heated: No  
Finished: No  
Enclosed: Yes  
Contiguous: Yes  
Permitted: Yes  
Wet space: No  
Addition: No  
Conversion: No

26 Floor 3 - Open To Below

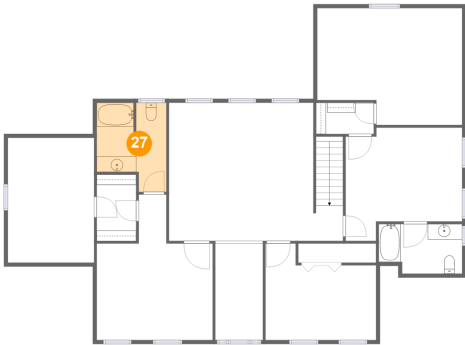


Max Dimensions: 6'1" x 12'4"  
Calculated Area: 75 sq. ft  
Included: No

Heated: No  
Finished: No  
Enclosed: No  
Contiguous: Yes  
Permitted: No  
Wet space: No  
Addition: No  
Conversion: No

24608 Savannah Trail, Athens, Limestone County, Alabama,  
United States, 35613

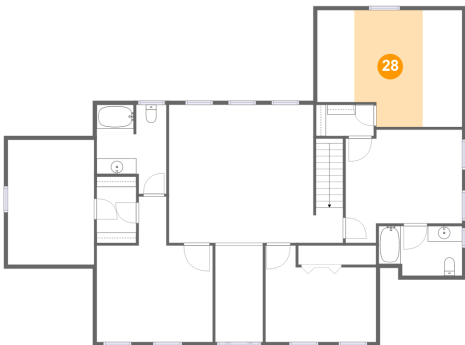
27 Floor 3 - Bath



Max Dimensions: 8'11" x 11'5"  
Calculated Area: 87 sq. ft  
Included: Yes

Heated: Yes  
Finished: Yes  
Enclosed: Yes  
Contiguous: Yes  
Permitted: Yes  
Wet space: Yes  
Addition: No  
Conversion: No

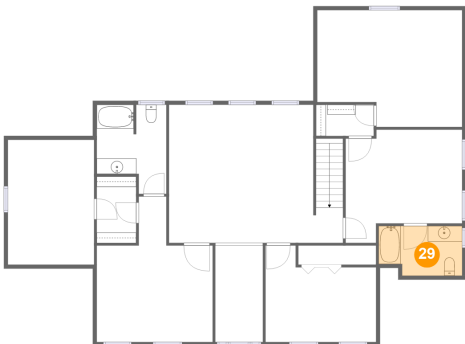
28 Floor 3 - Attic



Max Dimensions: 18'7" x 15'0"  
Calculated Area: 122 sq. ft  
Included: No

Heated: No  
Finished: No  
Enclosed: Yes  
Contiguous: Yes  
Permitted: Yes  
Wet space: No  
Addition: No  
Conversion: No

29 Floor 3 - Bath



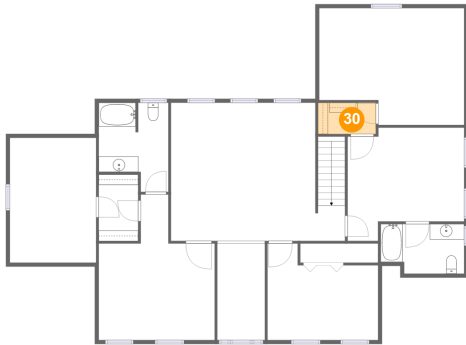
Max Dimensions: 10'8" x 6'4"  
Calculated Area: 63 sq. ft  
Included: Yes

Heated: Yes  
Finished: Yes  
Enclosed: Yes  
Contiguous: Yes  
Permitted: Yes  
Wet space: Yes  
Addition: No  
Conversion: No

## Home report

24608 Savannah Trail, Athens, Limestone County, Alabama,  
United States, 35613

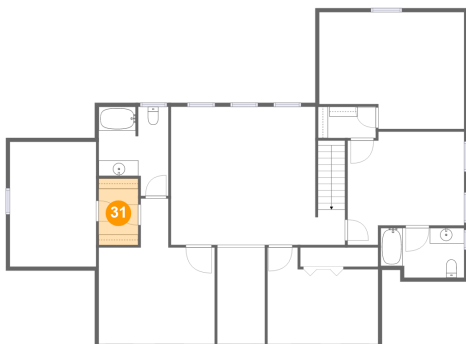
### 30 Floor 3 - W.I.C.



Max Dimensions: 7'5" x 4'0"  
Calculated Area: 30 sq. ft  
Included: Yes

Heated: Yes  
Finished: Yes  
Enclosed: Yes  
Contiguous: Yes  
Permitted: Yes  
Wet space: No  
Addition: No  
Conversion: No

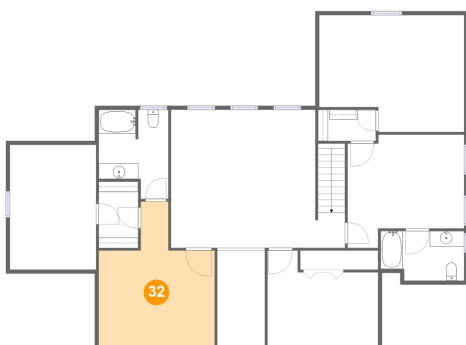
### 31 Floor 3 - W.I.C.



Max Dimensions: 5'1" x 8'6"  
Calculated Area: 43 sq. ft  
Included: Yes

Heated: Yes  
Finished: Yes  
Enclosed: Yes  
Contiguous: Yes  
Permitted: Yes  
Wet space: No  
Addition: No  
Conversion: No

### 32 Floor 3 - Bedroom



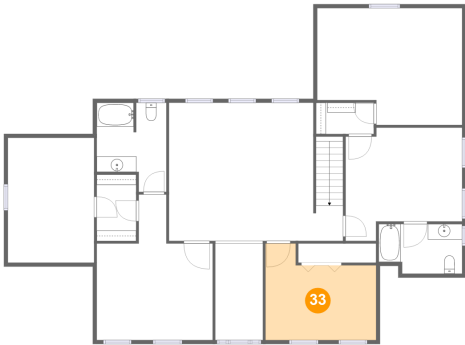
Max Dimensions: 14'10" x 18'8"  
Calculated Area: 206 sq. ft  
Included: Yes

Heated: Yes  
Finished: Yes  
Enclosed: Yes  
Contiguous: Yes  
Permitted: Yes  
Wet space: No  
Addition: No  
Conversion: No



24608 Savannah Trail, Athens, Limestone County, Alabama,  
United States, 35613

33 Floor 3 - Bedroom



Max Dimensions: 14'2" x 12'4"  
Calculated Area: 146 sq. ft  
Included: Yes

Heated: Yes  
Finished: Yes  
Enclosed: Yes  
Contiguous: Yes  
Permitted: Yes  
Wet space: No  
Addition: No  
Conversion: No

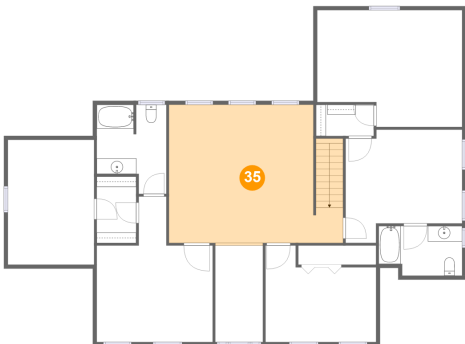
34 Floor 3 - Bedroom



Max Dimensions: 14'11" x 13'4"  
Calculated Area: 184 sq. ft  
Included: Yes

Heated: Yes  
Finished: Yes  
Enclosed: Yes  
Contiguous: Yes  
Permitted: Yes  
Wet space: No  
Addition: No  
Conversion: No

35 Floor 3 - Family Room



Max Dimensions: 22'4" x 17'8"  
Calculated Area: 377 sq. ft  
Included: Yes

Heated: Yes  
Finished: Yes  
Enclosed: Yes  
Contiguous: Yes  
Permitted: Yes  
Wet space: No  
Addition: No  
Conversion: No