

Home report

823 Harding St,Belle Fourche,SD,US



**Total Area: 890 sq. ft**  
Below Ground: 0 sq. ft, Floor 2: 890 sq. ft  
Excluded: Undefined 13 sq. ft, Basement 885 sq. ft, Screened porch 130 sq. ft, Walls: 147 sq. ft

Property summary

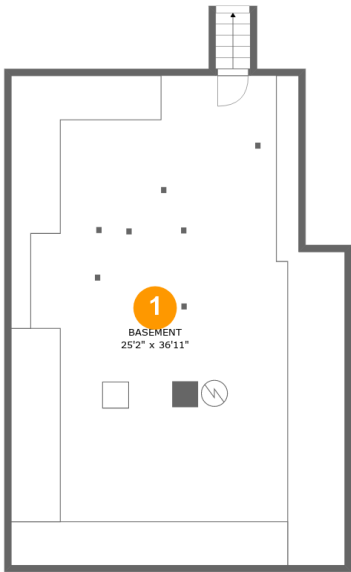
 **2** Floors

 **1** Bedrooms

 **1** Bathrooms

Home report

823 Harding St,Belle Fourche,SD,US



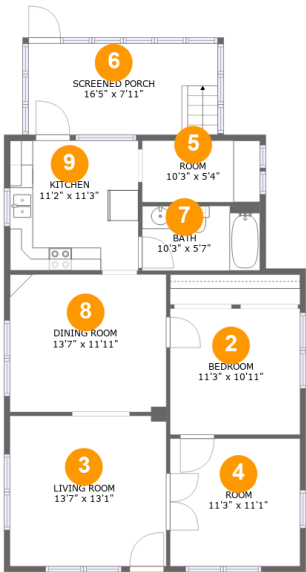
Room dimensions

Floor 1 Below ground Total:0sqft Excluded: 898sqft

#		Max Dimensions	sqft	Included
1	Basement	25'2" x 36'11"	885 sq. ft	No

Home report

823 Harding St,Belle Fourche,SD,US

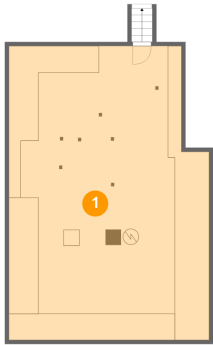


Room dimensions

Floor 2 Total:890sqft    Excluded: 130sqft

#		Max Dimensions	sqft	Included
2	Bedroom	11'3" x 10'11"	124 sq. ft	Yes
3	Living Room	13'7" x 13'1"	177 sq. ft	Yes
4	Room	11'3" x 11'1"	125 sq. ft	Yes
5	Room	10'3" x 5'4"	55 sq. ft	Yes
6	Screened Porch	16'5" x 7'11"	130 sq. ft	No
7	Bath	10'3" x 5'7"	57 sq. ft	Yes
8	Dining Room	13'7" x 11'11"	162 sq. ft	Yes
9	Kitchen	11'2" x 11'3"	126 sq. ft	Yes

1 Floor 1 - Basement



Max Dimensions: 25'2" x 36'11"  
Calculated Area: 885 sq. ft  
Included: No

Heated: Yes  
Finished: No  
Enclosed: Yes  
Contiguous: Yes  
Permitted: Yes  
Wet space: No  
Addition: No  
Conversion: No

2 Floor 2 - Bedroom



Max Dimensions: 11'3" x 10'11"  
Calculated Area: 124 sq. ft  
Included: Yes

Heated: Yes  
Finished: Yes  
Enclosed: Yes  
Contiguous: Yes  
Permitted: Yes  
Wet space: No  
Addition: No  
Conversion: No

3 Floor 2 - Living Room



Max Dimensions: 13'7" x 13'1"  
Calculated Area: 177 sq. ft  
Included: Yes

Heated: Yes  
Finished: Yes  
Enclosed: Yes  
Contiguous: Yes  
Permitted: Yes  
Wet space: No  
Addition: No  
Conversion: No

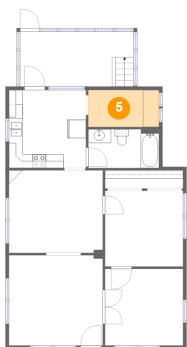
4 Floor 2 - Room



Max Dimensions: 11'3" x 11'1"  
Calculated Area: 125 sq. ft  
Included: Yes

Heated: Yes  
Finished: Yes  
Enclosed: Yes  
Contiguous: Yes  
Permitted: Yes  
Wet space: No  
Addition: No  
Conversion: No

5 Floor 2 - Room



Max Dimensions: 10'3" x 5'4"  
Calculated Area: 55 sq. ft  
Included: Yes

Heated: Yes  
Finished: Yes  
Enclosed: Yes  
Contiguous: Yes  
Permitted: Yes  
Wet space: No  
Addition: No  
Conversion: No

6 Floor 2 - Screened Porch



Max Dimensions: 16'5" x 7'11"  
Calculated Area: 130 sq. ft  
Included: No

Heated: No  
Finished: Yes  
Enclosed: No  
Contiguous: Yes  
Permitted: Yes  
Wet space: No  
Addition: No  
Conversion: No

7 Floor 2 - Bath



Max Dimensions: 10'3" x 5'7"  
Calculated Area: 57 sq. ft  
Included: Yes

Heated: Yes  
Finished: Yes  
Enclosed: Yes  
Contiguous: Yes  
Permitted: Yes  
Wet space: Yes  
Addition: No  
Conversion: No

8 Floor 2 - Dining Room



Max Dimensions: 13'7" x 11'11"  
Calculated Area: 162 sq. ft  
Included: Yes

Heated: Yes  
Finished: Yes  
Enclosed: Yes  
Contiguous: Yes  
Permitted: Yes  
Wet space: No  
Addition: No  
Conversion: No

9 Floor 2 - Kitchen



Max Dimensions: 11'2" x 11'3"  
Calculated Area: 126 sq. ft  
Included: Yes

Heated: Yes  
Finished: Yes  
Enclosed: Yes  
Contiguous: Yes  
Permitted: Yes  
Wet space: No  
Addition: No  
Conversion: No