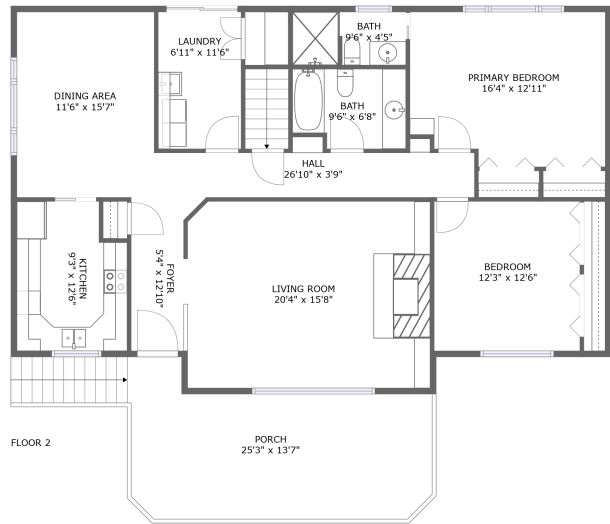
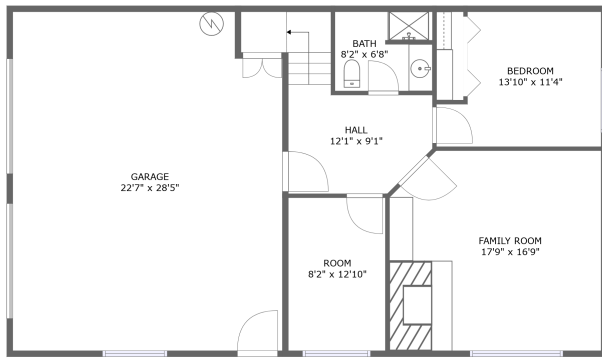



1836 Schutzwohl Lane, Grants Pass, Oregon 97527, United States



Property summary

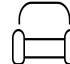
 **1** Garages

 **3** Bedrooms

 **3** Bathrooms

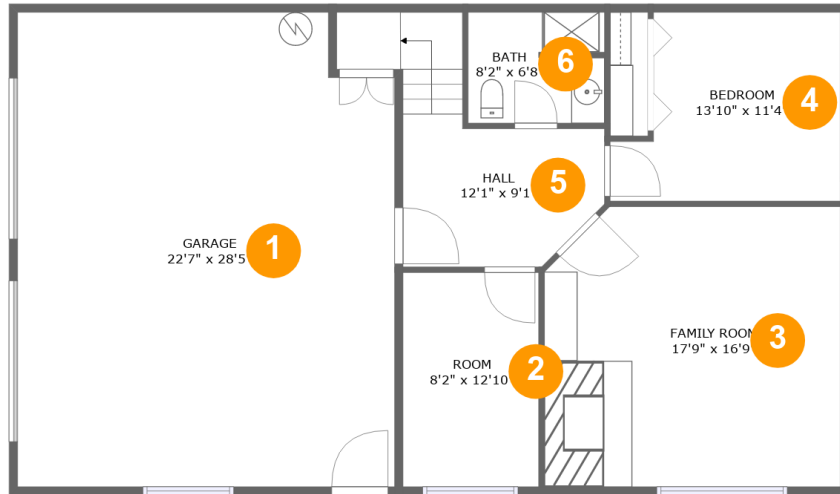
 **0** Half baths

 **2** Floors

 **2,364**
Gross living
area sqft

 **3,339**
Total sqft

1836 Schutzwohl Lane, Grants Pass, Oregon 97527, United States



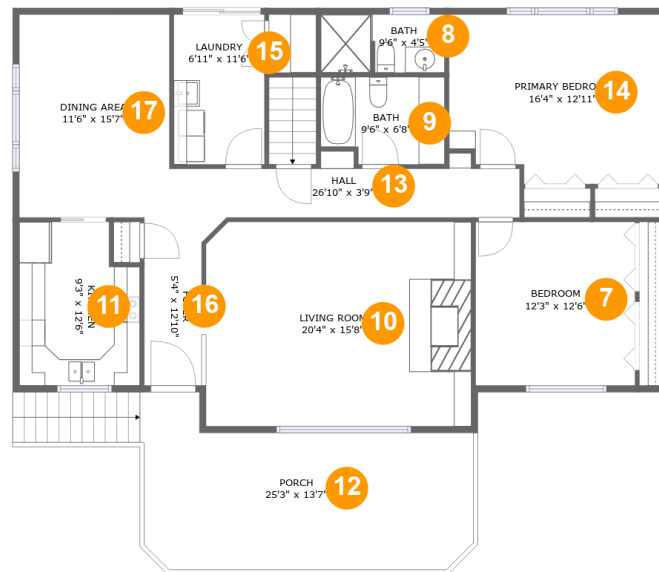
Room dimensions

Floor 1

Total sqft: 1480 Living area: 818

#		Dimensions	sqft	Counted as living area
1	Garage	22'7" x 28'5"	626 sq. ft	No
2	Room	8'2" x 12'10"	104 sq. ft	Yes
3	Family Room	17'9" x 16'9"	290 sq. ft	Yes
4	Bedroom	13'10" x 11'4"	136 sq. ft	Yes
5	Hall	12'1" x 9'1"	131 sq. ft	Yes
6	Bath	8'2" x 6'8"	53 sq. ft	Yes

1836 Schutzwohl Lane, Grants Pass, Oregon 97527, United States



Room dimensions

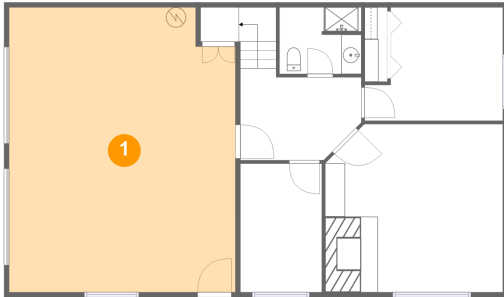
Floor 2

Total sqft: 1859 Living area: 1546

#		Dimensions	sqft	Counted as living area
7	Bedroom	12'3" x 12'6"	153 sq. ft	Yes
8	Bath	9'6" x 4'5"	42 sq. ft	Yes
9	Bath	9'6" x 6'8"	60 sq. ft	Yes
10	Living Room	20'4" x 15'8"	319 sq. ft	Yes
11	Kitchen	9'3" x 12'6"	108 sq. ft	Yes
12	Porch	25'3" x 13'7"	313 sq. ft	No
13	Hall	26'10" x 3'9"	106 sq. ft	Yes
14	Primary Bedroom	16'4" x 12'11"	202 sq. ft	Yes
15	Laundry	6'11" x 11'6"	80 sq. ft	Yes
16	Foyer	5'4" x 12'10"	58 sq. ft	Yes
17	Dining Area	11'6" x 15'7"	179 sq. ft	Yes

1836 Schutzwohl Lane, Grants Pass, Oregon 97527, United States

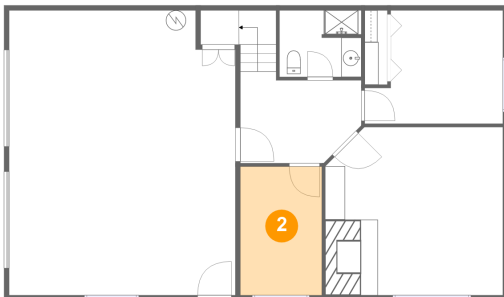
1 Floor 1 - Garage



Dimensions: 22'7" x 28'5"
Area: 626 sq. ft
Counted as living area: No

Heated: No
Finished: No
Enclosed: Yes
Contiguous: Yes
Permitted: Yes
Wet space: No
Addition: No
Conversion: No

2 Floor 1 - Room

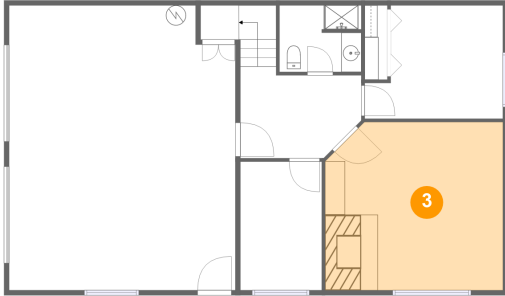


Dimensions: 8'2" x 12'10"
Area: 104 sq. ft
Counted as living area: Yes

Heated: Yes
Finished: Yes
Enclosed: Yes
Contiguous: Yes
Permitted: Yes
Wet space: No
Addition: No
Conversion: No

1836 Schutzwohl Lane, Grants Pass, Oregon 97527, United States

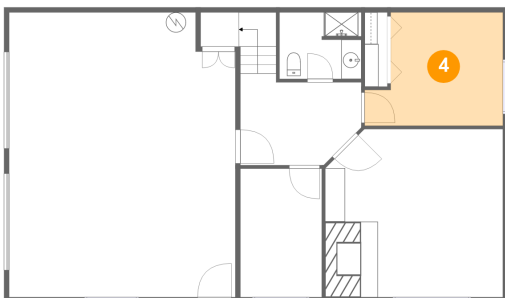
3 Floor 1 - Family Room



Dimensions: 17'9" x 16'9"
Area: 290 sq. ft
Counted as living area: Yes

Heated: Yes
Finished: Yes
Enclosed: Yes
Contiguous: Yes
Permitted: Yes
Wet space: No
Addition: No
Conversion: No

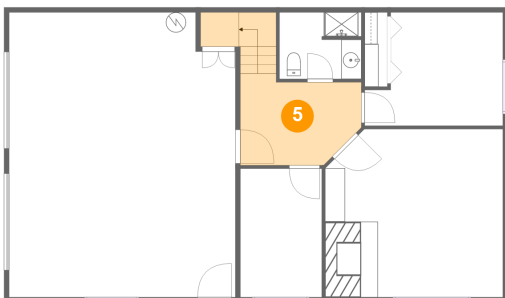
4 Floor 1 - Bedroom



Dimensions: 13'10" x 11'4"
Area: 136 sq. ft
Counted as living area: Yes

Heated: Yes
Finished: Yes
Enclosed: Yes
Contiguous: Yes
Permitted: Yes
Wet space: No
Addition: No
Conversion: No

5 Floor 1 - Hall

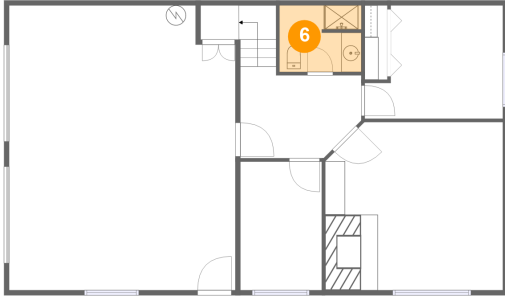


Dimensions: 12'1" x 9'1"
Area: 131 sq. ft
Counted as living area: Yes

Heated: Yes
Finished: Yes
Enclosed: Yes
Contiguous: Yes
Permitted: Yes
Wet space: No
Addition: No
Conversion: No

1836 Schutzwohl Lane, Grants Pass, Oregon 97527, United States

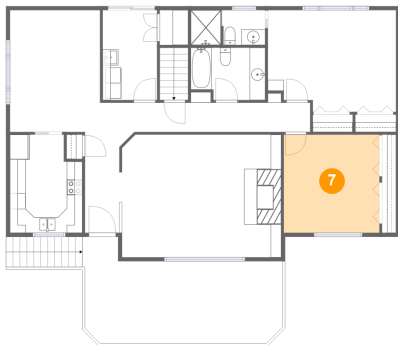
6 Floor 1 - Bath



Dimensions: 8'2" x 6'8"
Area: 53 sq. ft
Counted as living area: Yes

Heated: Yes
Finished: Yes
Enclosed: Yes
Contiguous: Yes
Permitted: Yes
Wet space: Yes
Addition: No
Conversion: No

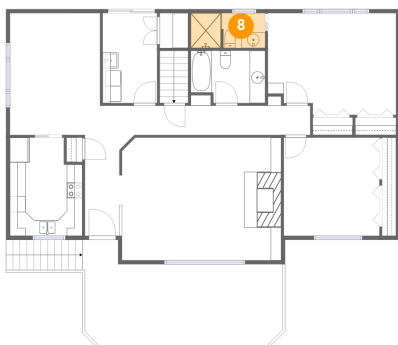
7 Floor 2 - Bedroom



Dimensions: 12'3" x 12'6"
Area: 153 sq. ft
Counted as living area: Yes

Heated: Yes
Finished: Yes
Enclosed: Yes
Contiguous: Yes
Permitted: Yes
Wet space: No
Addition: No
Conversion: No

8 Floor 2 - Bath

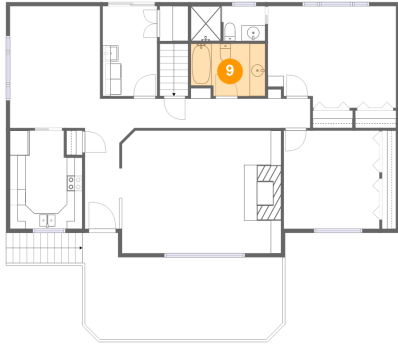


Dimensions: 9'6" x 4'5"
Area: 42 sq. ft
Counted as living area: Yes

Heated: Yes
Finished: Yes
Enclosed: Yes
Contiguous: Yes
Permitted: Yes
Wet space: Yes
Addition: No
Conversion: No

1836 Schutzwohl Lane, Grants Pass, Oregon 97527, United States

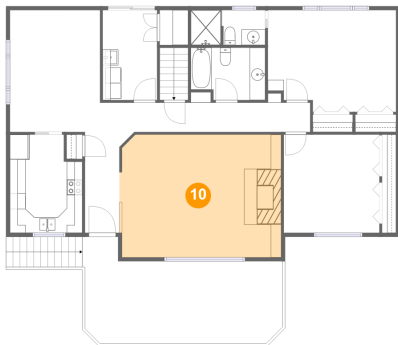
9 Floor 2 - Bath



Dimensions: 9'6" x 6'8"
Area: 60 sq. ft
Counted as living area: Yes

Heated: Yes
Finished: Yes
Enclosed: Yes
Contiguous: Yes
Permitted: Yes
Wet space: Yes
Addition: No
Conversion: No

10 Floor 2 - Living Room



Dimensions: 20'4" x 15'8"
Area: 319 sq. ft
Counted as living area: Yes

Heated: Yes
Finished: Yes
Enclosed: Yes
Contiguous: Yes
Permitted: Yes
Wet space: No
Addition: No
Conversion: No

11 Floor 2 - Kitchen

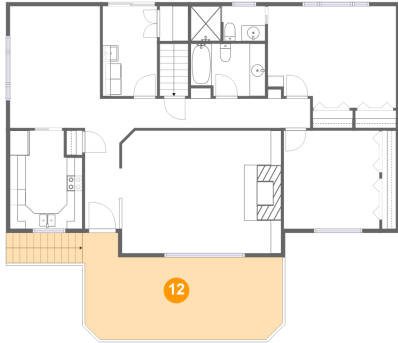


Dimensions: 9'3" x 12'6"
Area: 108 sq. ft
Counted as living area: Yes

Heated: Yes
Finished: Yes
Enclosed: Yes
Contiguous: Yes
Permitted: Yes
Wet space: No
Addition: No
Conversion: No

1836 Schutzwohl Lane, Grants Pass, Oregon 97527, United States

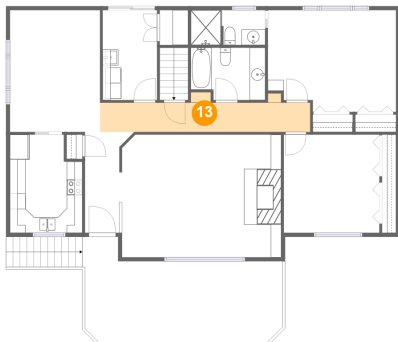
12 Floor 2 - Porch



Dimensions: 25'3" x 13'7"
Area: 313 sq. ft
Counted as living area: No

Heated: No
Finished: Yes
Enclosed: No
Contiguous: Yes
Permitted: Yes
Wet space: No
Addition: No
Conversion: No

13 Floor 2 - Hall



Dimensions: 26'10" x 3'9"
Area: 106 sq. ft
Counted as living area: Yes

Heated: Yes
Finished: Yes
Enclosed: Yes
Contiguous: Yes
Permitted: Yes
Wet space: No
Addition: No
Conversion: No

14 Floor 2 - Primary Bedroom

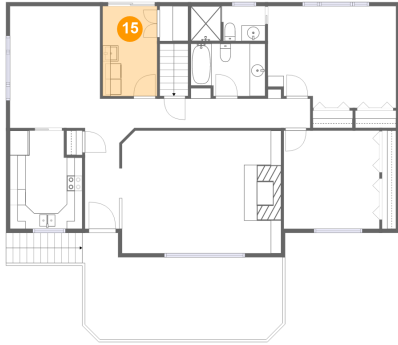


Dimensions: 16'4" x 12'11"
Area: 202 sq. ft
Counted as living area: Yes

Heated: Yes
Finished: Yes
Enclosed: Yes
Contiguous: Yes
Permitted: Yes
Wet space: No
Addition: No
Conversion: No

1836 Schutzwohl Lane, Grants Pass, Oregon 97527, United States

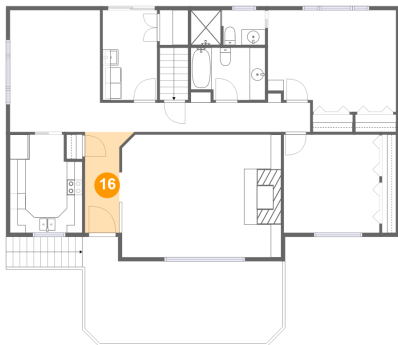
15 Floor 2 - Laundry



Dimensions: 6'11" x 11'6"
Area: 80 sq. ft
Counted as living area: Yes

Heated: Yes
Finished: Yes
Enclosed: Yes
Contiguous: Yes
Permitted: Yes
Wet space: No
Addition: No
Conversion: No

16 Floor 2 - Foyer



Dimensions: 5'4" x 12'10"
Area: 58 sq. ft
Counted as living area: Yes

Heated: Yes
Finished: Yes
Enclosed: Yes
Contiguous: Yes
Permitted: Yes
Wet space: No
Addition: No
Conversion: No

17 Floor 2 - Dining Area



Dimensions: 11'6" x 15'7"
Area: 179 sq. ft
Counted as living area: Yes

Heated: Yes
Finished: Yes
Enclosed: Yes
Contiguous: Yes
Permitted: Yes
Wet space: No
Addition: No
Conversion: No