


# Home data report


1745 Kleber Street, Brighton Heights, Pittsburgh,  
Allegheny County, Pennsylvania, United States, 15212



## Property summary

 **0** Garages

 **4** Bedrooms

 **1** Bathrooms

 **1** Half baths

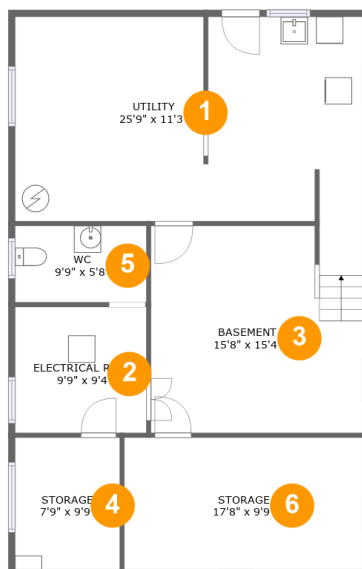
 **4** Floors

 **1,793** Gross living area sqft

 **3,976** Total sqft

Scan captured on Thu, 09 Jan 2025 21:27:53 GMT

Information is calculated by **LIDAR** technology deemed highly reliable but not guaranteed.



## Room dimensions

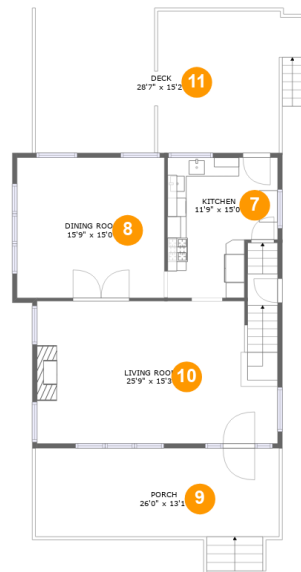
Floor 1

Total sqft: 1118 Living area: 0

#		Dimensions	sqft	Counted as living area
1	Utility	25'9" x 11'3"	409 sq. ft	No
2	Room	9'9" x 9'4"	91 sq. ft	No
3	Basement	15'8" x 15'4"	216 sq. ft	No
4	Storage	7'9" x 9'9"	75 sq. ft	No
5	Bath	9'9" x 5'8"	55 sq. ft	No
6	Storage	17'8" x 9'9"	172 sq. ft	No

## Home data report

1745 Kleber Street, Brighton Heights, Pittsburgh,  
Allegheny County, Pennsylvania, United States, 15212



## Room dimensions

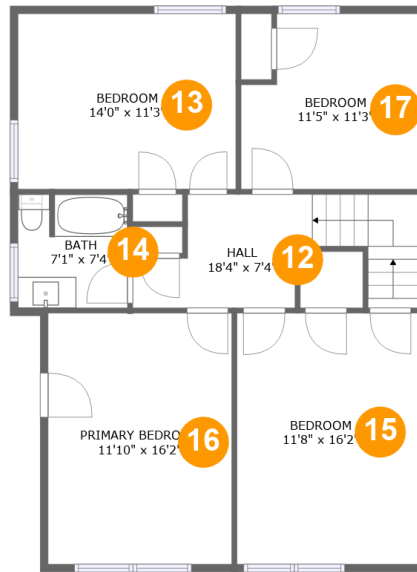
Floor 2

Total sqft: 1560 Living area: 877

#		Dimensions	sqft	Counted as living area
7	Kitchen	11'9" x 15'0"	154 sq. ft	Yes
8	Dining Room	15'9" x 15'0"	236 sq. ft	Yes
9	Outdoor	26'0" x 13'1"	268 sq. ft	No
10	Living Room	25'9" x 15'3"	411 sq. ft	Yes
11	Outdoor	28'7" x 15'2"	415 sq. ft	No

Scan captured on Thu, 09 Jan 2025 21:27:53 GMT

Information is calculated by **LIDAR** technology deemed highly reliable but not guaranteed.



## Room dimensions

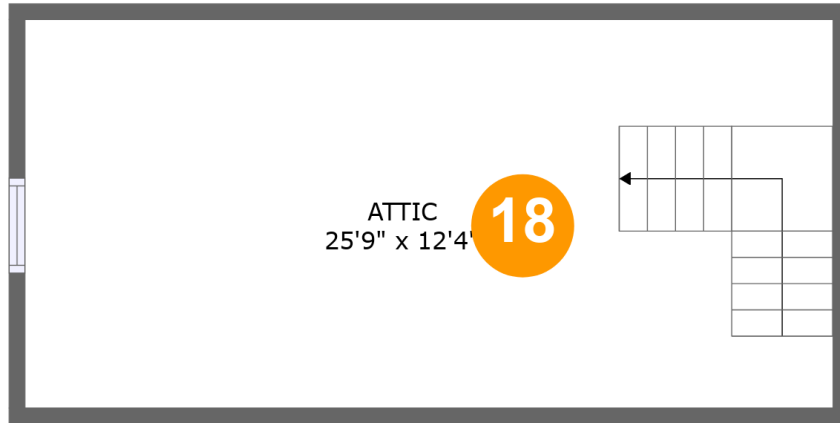
Floor 3

Total sqft: 940 Living area: 916

#		Dimensions	sqft	Counted as living area
12	Hall	18'4" x 7'4"	101 sq. ft	Yes
13	Bedroom	14'0" x 11'3"	158 sq. ft	Yes
14	Bath	7'1" x 7'4"	50 sq. ft	Yes
15	Bedroom	11'8" x 16'2"	169 sq. ft	Yes
16	Bedroom	11'10" x 16'2"	191 sq. ft	Yes
17	Bedroom	11'5" x 11'3"	118 sq. ft	Yes

Home data report

1745 Kleber Street, Brighton Heights, Pittsburgh,  
Allegheny County, Pennsylvania, United States, 15212



## Room dimensions

Floor 4

Total sqft: 358

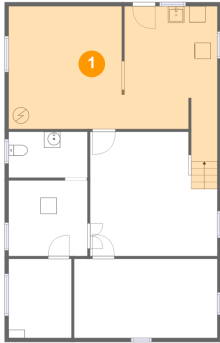
Living area: 0

#		Dimensions	sqft	Counted as living area
18	Attic	25'9" x 12'4"	263 sq. ft	No

Scan captured on Thu, 09 Jan 2025 21:27:53 GMT

Information is calculated by **LIDAR** technology deemed highly reliable but not guaranteed.

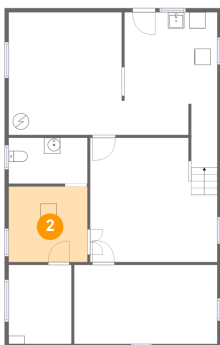
## 1 Floor 1 - Utility



Dimensions: 25'9" x 11'3"  
Area: 409 sq. ft  
Counted as living area: No

Heated: Yes  
Finished: Yes  
Enclosed: Yes  
Contiguous: No  
Permitted: Yes  
Wet space: No  
Addition: No  
Conversion: No

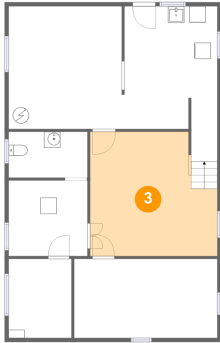
## 2 Floor 1 - Room



Dimensions: 9'9" x 9'4"  
Area: 91 sq. ft  
Counted as living area: No

Heated: No  
Finished: No  
Enclosed: Yes  
Contiguous: Yes  
Permitted: Yes  
Wet space: No  
Addition: No  
Conversion: No

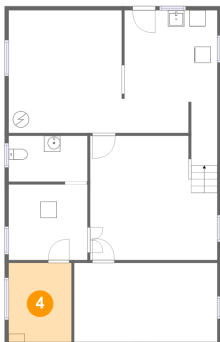
### 3 Floor 1 - Basement



Dimensions: 15'8" x 15'4"  
Area: 216 sq. ft  
Counted as living area: No

Heated: Yes  
Finished: No  
Enclosed: Yes  
Contiguous: Yes  
Permitted: Yes  
Wet space: No  
Addition: No  
Conversion: No

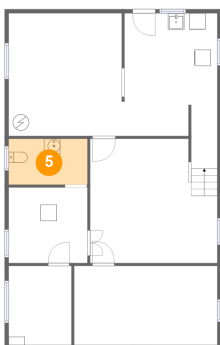
### 4 Floor 1 - Storage



Dimensions: 7'9" x 9'9"  
Area: 75 sq. ft  
Counted as living area: No

Heated: No  
Finished: No  
Enclosed: No  
Contiguous: Yes  
Permitted: Yes  
Wet space: No  
Addition: No  
Conversion: No

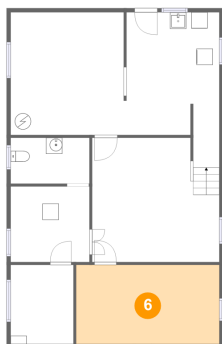
### 5 Floor 1 - Bath



Dimensions: 9'9" x 5'8"  
Area: 55 sq. ft  
Counted as living area: No

Heated: Yes  
Finished: Yes  
Enclosed: Yes  
Contiguous: No  
Permitted: Yes  
Wet space: No  
Addition: No  
Conversion: No

## 6 Floor 1 - Storage



Dimensions: 17'8" x 9'9"  
Area: 172 sq. ft  
Counted as living area: No

Heated: No  
Finished: No  
Enclosed: No  
Contiguous: Yes  
Permitted: Yes  
Wet space: No  
Addition: No  
Conversion: No

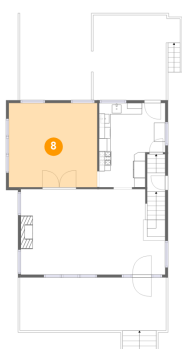
## 7 Floor 2 - Kitchen



Dimensions: 11'9" x 15'0"  
Area: 154 sq. ft  
Counted as living area: Yes

Heated: Yes  
Finished: Yes  
Enclosed: Yes  
Contiguous: Yes  
Permitted: Yes  
Wet space: No  
Addition: No  
Conversion: No

## 8 Floor 2 - Dining Room



Dimensions: 15'9" x 15'0"  
Area: 236 sq. ft  
Counted as living area: Yes

Heated: Yes  
Finished: Yes  
Enclosed: Yes  
Contiguous: Yes  
Permitted: Yes  
Wet space: No  
Addition: No  
Conversion: No



## 9 Floor 2 - Outdoor



Dimensions: 26'0" x 13'1"  
Area: 268 sq. ft  
Counted as living area: No

Heated: No  
Finished: Yes  
Enclosed: No  
Contiguous: Yes  
Permitted: Yes  
Wet space: No  
Addition: No  
Conversion: No

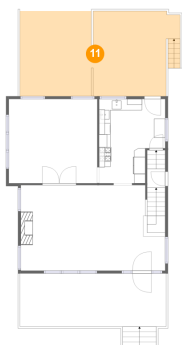
## 10 Floor 2 - Living Room



Dimensions: 25'9" x 15'3"  
Area: 411 sq. ft  
Counted as living area: Yes

Heated: Yes  
Finished: Yes  
Enclosed: Yes  
Contiguous: Yes  
Permitted: Yes  
Wet space: No  
Addition: No  
Conversion: No

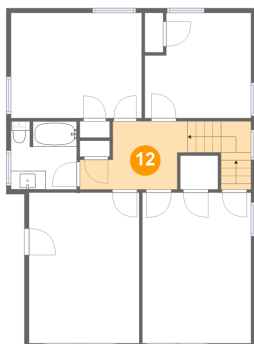
## 11 Floor 2 - Outdoor



Dimensions: 28'7" x 15'2"  
Area: 415 sq. ft  
Counted as living area: No

Heated: No  
Finished: Yes  
Enclosed: No  
Contiguous: Yes  
Permitted: Yes  
Wet space: No  
Addition: No  
Conversion: No

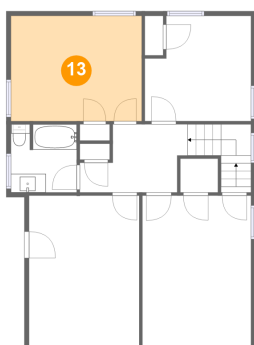
### 12 Floor 3 - Hall



Dimensions: 18'4" x 7'4"  
Area: 101 sq. ft  
Counted as living area: Yes

Heated: Yes  
Finished: Yes  
Enclosed: Yes  
Contiguous: Yes  
Permitted: Yes  
Wet space: No  
Addition: No  
Conversion: No

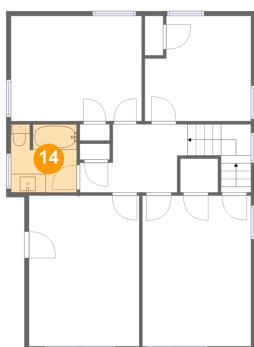
### 13 Floor 3 - Bedroom



Dimensions: 14'0" x 11'3"  
Area: 158 sq. ft  
Counted as living area: Yes

Heated: Yes  
Finished: Yes  
Enclosed: Yes  
Contiguous: Yes  
Permitted: Yes  
Wet space: No  
Addition: No  
Conversion: No

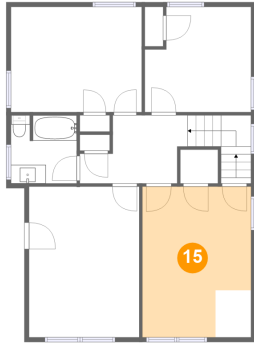
### 14 Floor 3 - Bath



Dimensions: 7'1" x 7'4"  
Area: 50 sq. ft  
Counted as living area: Yes

Heated: Yes  
Finished: Yes  
Enclosed: Yes  
Contiguous: Yes  
Permitted: Yes  
Wet space: Yes  
Addition: No  
Conversion: No

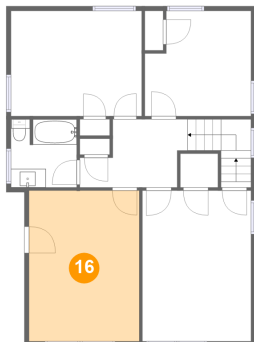
**15** Floor 3 - Bedroom



Dimensions: 11'8" x 16'2"  
Area: 169 sq. ft  
Counted as living area: Yes

Heated: Yes  
Finished: Yes  
Enclosed: Yes  
Contiguous: Yes  
Permitted: Yes  
Wet space: No  
Addition: No  
Conversion: No

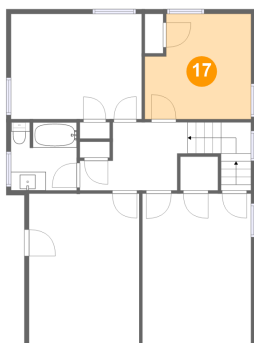
**16** Floor 3 - Bedroom



Dimensions: 11'10" x 16'2"  
Area: 191 sq. ft  
Counted as living area: Yes

Heated: Yes  
Finished: Yes  
Enclosed: Yes  
Contiguous: Yes  
Permitted: Yes  
Wet space: No  
Addition: No  
Conversion: No

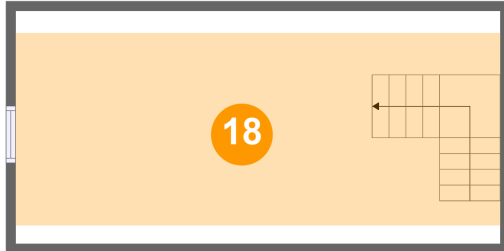
**17** Floor 3 - Bedroom



Dimensions: 11'5" x 11'3"  
Area: 118 sq. ft  
Counted as living area: Yes

Heated: Yes  
Finished: Yes  
Enclosed: Yes  
Contiguous: Yes  
Permitted: Yes  
Wet space: No  
Addition: No  
Conversion: No

**18** Floor 4 - Attic



Dimensions: 25'9" x 12'4"  
Area: 263 sq. ft  
Counted as living area: No

Heated: No  
Finished: No  
Enclosed: Yes  
Contiguous: Yes  
Permitted: Yes  
Wet space: No  
Addition: No  
Conversion: No