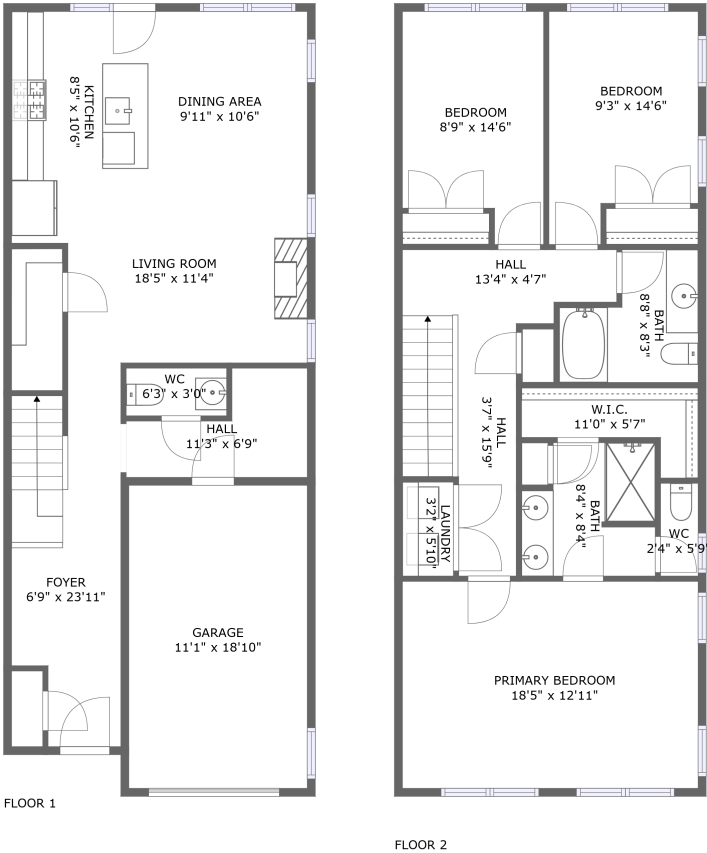



319 Canary Grass Court, Lexington, South Carolina
29072, United States



Property summary

 **1** Garages

 **3** Bedrooms

 **2** Bathrooms

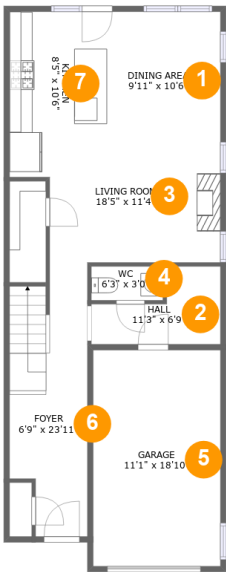
 **1** Half baths

 **2** Floors

 **1,646**
Gross living
area sqft

 **1,872**
Total sqft

319 Canary Grass Court, Lexington, South Carolina
29072, United States



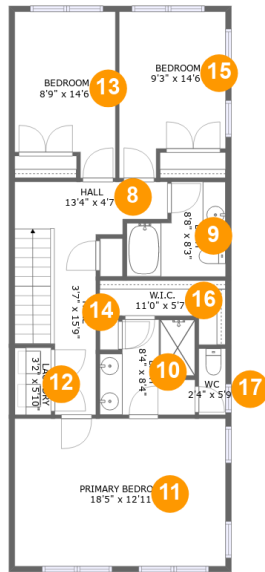
Room dimensions

Floor 1

Total sqft: 927 Living area: 701

#		Dimensions	sqft	Counted as living area
1	Dining Area	9'11" x 10'6"	104 sq. ft	Yes
2	Hall	11'3" x 6'9"	55 sq. ft	Yes
3	Living Room	18'5" x 11'4"	182 sq. ft	Yes
4	WC	6'3" x 3'0"	18 sq. ft	Yes
5	Garage	11'1" x 18'10"	209 sq. ft	No
6	Foyer	6'9" x 23'11"	143 sq. ft	Yes
7	Kitchen	8'5" x 10'6"	89 sq. ft	Yes

319 Canary Grass Court, Lexington, South Carolina 29072, United States



Room dimensions

Floor 2

Total sqft: 945 Living area: 945

#		Dimensions	sqft	Counted as living area
8	Hall	13'4" x 4'7"	54 sq. ft	Yes
9	Bath	8'8" x 8'3"	57 sq. ft	Yes
10	Bath	8'4" x 8'4"	62 sq. ft	Yes
11	Primary Bedroom	18'5" x 12'11"	237 sq. ft	Yes
12	Laundry	3'2" x 5'10"	19 sq. ft	Yes
13	Bedroom	8'9" x 14'6"	114 sq. ft	Yes
14	Hall	3'7" x 15'9"	91 sq. ft	Yes
15	Bedroom	9'3" x 14'6"	119 sq. ft	Yes
16	W.I.C.	11'0" x 5'7"	40 sq. ft	Yes
17	WC	2'4" x 5'9"	13 sq. ft	Yes

319 Canary Grass Court, Lexington, South Carolina
29072, United States

1 Floor 1 - Dining Area



Dimensions: 9'11" x 10'6"
Area: 104 sq. ft
Counted as living area: Yes

Heated: Yes
Finished: Yes
Enclosed: Yes
Contiguous: Yes
Permitted: Yes
Wet space: No
Addition: No
Conversion: No

2 Floor 1 - Hall



Dimensions: 11'3" x 6'9"
Area: 55 sq. ft
Counted as living area: Yes

Heated: Yes
Finished: Yes
Enclosed: Yes
Contiguous: Yes
Permitted: Yes
Wet space: No
Addition: No
Conversion: No

**319 Canary Grass Court, Lexington, South Carolina
29072, United States**

3 Floor 1 - Living Room



Dimensions: 18'5" x 11'4"
Area: 182 sq. ft
Counted as living area: Yes

Heated: Yes
Finished: Yes
Enclosed: Yes
Contiguous: Yes
Permitted: Yes
Wet space: No
Addition: No
Conversion: No

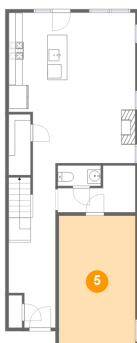
4 Floor 1 - WC



Dimensions: 6'3" x 3'0"
Area: 18 sq. ft
Counted as living area: Yes

Heated: Yes
Finished: Yes
Enclosed: Yes
Contiguous: Yes
Permitted: Yes
Wet space: Yes
Addition: No
Conversion: No

5 Floor 1 - Garage



Dimensions: 11'1" x 18'10"
Area: 209 sq. ft
Counted as living area: No

Heated: No
Finished: No
Enclosed: Yes
Contiguous: Yes
Permitted: Yes
Wet space: No
Addition: No
Conversion: No

319 Canary Grass Court, Lexington, South Carolina 29072, United States

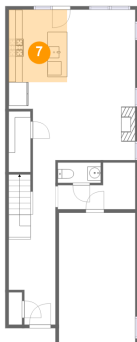
6 Floor 1 - Foyer



Dimensions: 6'9" x 23'11"
Area: 143 sq. ft
Counted as living area: Yes

Heated: Yes
Finished: Yes
Enclosed: Yes
Contiguous: Yes
Permitted: Yes
Wet space: No
Addition: No
Conversion: No

7 Floor 1 - Kitchen



Dimensions: 8'5" x 10'6"
Area: 89 sq. ft
Counted as living area: Yes

Heated: Yes
Finished: Yes
Enclosed: Yes
Contiguous: Yes
Permitted: Yes
Wet space: No
Addition: No
Conversion: No

8 Floor 2 - Hall



Dimensions: 13'4" x 4'7"
Area: 54 sq. ft
Counted as living area: Yes

Heated: Yes
Finished: Yes
Enclosed: Yes
Contiguous: Yes
Permitted: Yes
Wet space: No
Addition: No
Conversion: No

319 Canary Grass Court, Lexington, South Carolina
29072, United States

9 Floor 2 - Bath



Dimensions: 8'8" x 8'3"
Area: 57 sq. ft
Counted as living area: Yes

Heated: Yes
Finished: Yes
Enclosed: Yes
Contiguous: Yes
Permitted: Yes
Wet space: Yes
Addition: No
Conversion: No

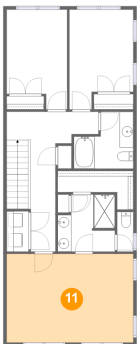
10 Floor 2 - Bath



Dimensions: 8'4" x 8'4"
Area: 62 sq. ft
Counted as living area: Yes

Heated: Yes
Finished: Yes
Enclosed: Yes
Contiguous: Yes
Permitted: Yes
Wet space: Yes
Addition: No
Conversion: No

11 Floor 2 - Primary Bedroom

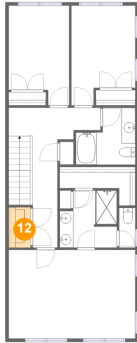


Dimensions: 18'5" x 12'11"
Area: 237 sq. ft
Counted as living area: Yes

Heated: Yes
Finished: Yes
Enclosed: Yes
Contiguous: Yes
Permitted: Yes
Wet space: No
Addition: No
Conversion: No

**319 Canary Grass Court, Lexington, South Carolina
29072, United States**

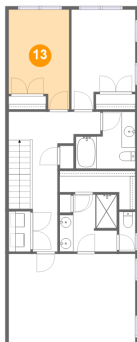
12 Floor 2 - Laundry



Dimensions: 3'2" x 5'10"
Area: 19 sq. ft
Counted as living area: Yes

Heated: Yes
Finished: Yes
Enclosed: Yes
Contiguous: Yes
Permitted: Yes
Wet space: No
Addition: No
Conversion: No

13 Floor 2 - Bedroom



Dimensions: 8'9" x 14'6"
Area: 114 sq. ft
Counted as living area: Yes

Heated: Yes
Finished: Yes
Enclosed: Yes
Contiguous: Yes
Permitted: Yes
Wet space: No
Addition: No
Conversion: No

14 Floor 2 - Hall

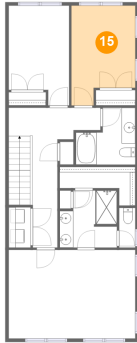


Dimensions: 3'7" x 15'9"
Area: 91 sq. ft
Counted as living area: Yes

Heated: Yes
Finished: Yes
Enclosed: Yes
Contiguous: Yes
Permitted: Yes
Wet space: No
Addition: No
Conversion: No

319 Canary Grass Court, Lexington, South Carolina 29072, United States

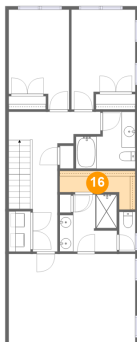
15 Floor 2 - Bedroom



Dimensions: 9'3" x 14'6"
Area: 119 sq. ft
Counted as living area: Yes

Heated: Yes
Finished: Yes
Enclosed: Yes
Contiguous: Yes
Permitted: Yes
Wet space: No
Addition: No
Conversion: No

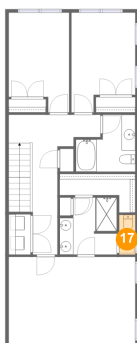
16 Floor 2 - W.I.C.



Dimensions: 11'0" x 5'7"
Area: 40 sq. ft
Counted as living area: Yes

Heated: Yes
Finished: Yes
Enclosed: Yes
Contiguous: Yes
Permitted: Yes
Wet space: No
Addition: No
Conversion: No

17 Floor 2 - WC



Dimensions: 2'4" x 5'9"
Area: 13 sq. ft
Counted as living area: Yes

Heated: Yes
Finished: Yes
Enclosed: Yes
Contiguous: Yes
Permitted: Yes
Wet space: Yes
Addition: No
Conversion: No