

Home report

746 Hawks Ridge Road, Port Orange, Volusia County, Florida,
United States, 32127



Total Area: 1584 sq. ft

Floor 1: 1584 sq. ft

Excluded: Garage 413 sq. ft, Outdoor Porch Screen 183 sq. ft, Outdoor Patio 220 sq. ft, Fireplace 8 sq. ft, Walls: 145 sq. ft

Property summary

1 Floors

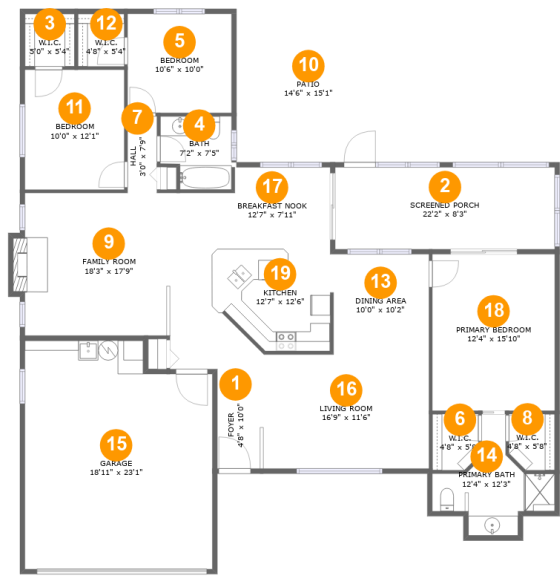
3 Bedrooms

2 Bathrooms

1 Garages

Home report

746 Hawks Ridge Road, Port Orange, Volusia County, Florida,
United States, 32127



Room dimensions

Floor 1 Total:1584sqft Excluded: 824sqft

#		Max Dimensions	sqft	Included
1	Foyer	4'8" x 10'0"	47 sq. ft	Yes
2	Screened Porch	22'2" x 8'3"	183 sq. ft	No
3	W.I.C.	5'0" x 5'4"	27 sq. ft	Yes
4	Bath	7'2" x 7'5"	48 sq. ft	Yes
5	Bedroom	10'6" x 10'0"	105 sq. ft	Yes
6	W.I.C.	4'8" x 5'8"	25 sq. ft	Yes
7	Hall	3'0" x 7'9"	23 sq. ft	Yes
8	W.I.C.	4'8" x 5'8"	25 sq. ft	Yes
9	Family Room	18'3" x 17'9"	282 sq. ft	Yes
10	Patio	14'6" x 15'1"	220 sq. ft	No
11	Bedroom	10'0" x 12'1"	121 sq. ft	Yes

Home report

**746 Hawks Ridge Road, Port Orange, Volusia County, Florida,
United States, 32127**

#		Max Dimensions	sqft	Included
12	W.I.C.	4'8" x 5'4"	25 sq. ft	Yes
13	Dining Area	10'0" x 10'2"	99 sq. ft	Yes
14	Primary Bath	12'4" x 12'3"	77 sq. ft	Yes
15	Garage	18'11" x 23'1"	413 sq. ft	No
16	Living Room	16'9" x 11'6"	192 sq. ft	Yes
17	Breakfast Nook	12'7" x 7'11"	92 sq. ft	Yes
18	Primary Bedroom	12'4" x 15'10"	195 sq. ft	Yes
19	Kitchen	12'7" x 12'6"	142 sq. ft	Yes

746 Hawks Ridge Road, Port Orange, Volusia County, Florida,
United States, 32127

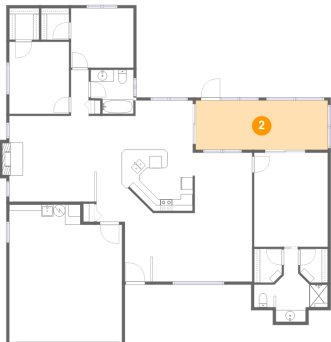
1 Floor 1 - Foyer



Max Dimensions: 4'8" x
10'0"
Calculated Area: 47 sq. ft
Included: Yes

Heated: Yes
Finished: Yes
Enclosed: Yes
Contiguous:
Yes
Permitted: Yes
Wet space: No
Addition: No
Conversion: No

2 Floor 1 - Screened Porch

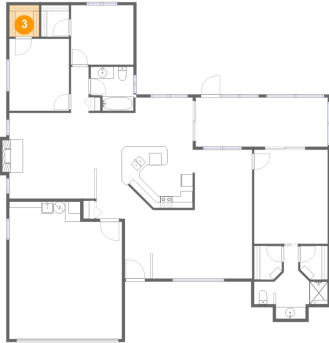


Max Dimensions: 22'2" x
8'3"
Calculated Area: 183 sq. ft
Included: No

Heated: No
Finished: Yes
Enclosed: No
Contiguous:
Yes
Permitted: Yes
Wet space: No
Addition: No
Conversion: No

746 Hawks Ridge Road, Port Orange, Volusia County, Florida,
United States, 32127

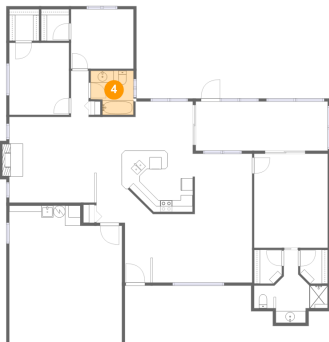
3 Floor 1 - W.I.C.



Max Dimensions: 5'0" x 5'4"
Calculated Area: 27 sq. ft
Included: Yes

Heated: Yes
Finished: Yes
Enclosed: Yes
Contiguous: Yes
Permitted: Yes
Wet space: No
Addition: No
Conversion: No

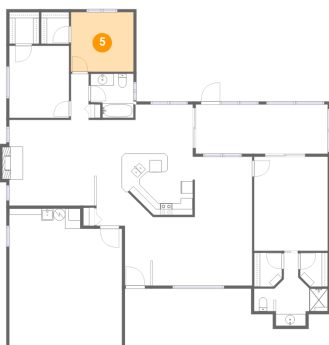
4 Floor 1 - Bath



Max Dimensions: 7'2" x 7'5"
Calculated Area: 48 sq. ft
Included: Yes

Heated: Yes
Finished: Yes
Enclosed: Yes
Contiguous: Yes
Permitted: Yes
Wet space: Yes
Addition: No
Conversion: No

5 Floor 1 - Bedroom

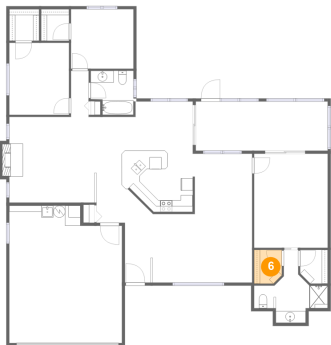


Max Dimensions: 10'6" x
10'0"
Calculated Area: 105 sq. ft
Included: Yes

Heated: Yes
Finished: Yes
Enclosed: Yes
Contiguous:
Yes
Permitted: Yes
Wet space: No
Addition: No
Conversion: No

746 Hawks Ridge Road, Port Orange, Volusia County, Florida,
United States, 32127

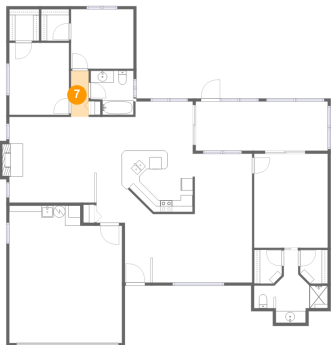
6 Floor 1 - W.I.C.



Max Dimensions: 4'8" x 5'8"
Calculated Area: 25 sq. ft
Included: Yes

Heated: Yes
Finished: Yes
Enclosed: Yes
Contiguous: Yes
Permitted: Yes
Wet space: No
Addition: No
Conversion: No

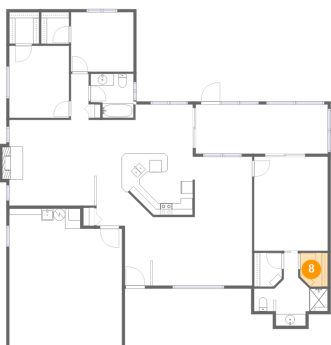
7 Floor 1 - Hall



Max Dimensions: 3'0" x 7'9"
Calculated Area: 23 sq. ft
Included: Yes

Heated: Yes
Finished: Yes
Enclosed: Yes
Contiguous: Yes
Permitted: Yes
Wet space: No
Addition: No
Conversion: No

8 Floor 1 - W.I.C.

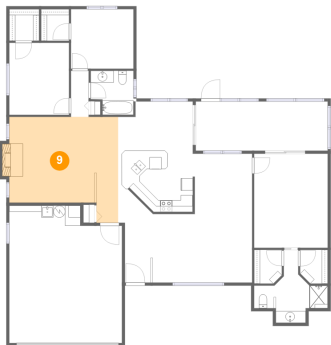


Max Dimensions: 4'8" x 5'8"
Calculated Area: 25 sq. ft
Included: Yes

Heated: Yes
Finished: Yes
Enclosed: Yes
Contiguous: Yes
Permitted: Yes
Wet space: No
Addition: No
Conversion: No

746 Hawks Ridge Road, Port Orange, Volusia County, Florida,
United States, 32127

9 Floor 1 - Family Room



Max Dimensions: 18'3" x 17'9"
Calculated Area: 282 sq. ft
Included: Yes

Heated: Yes
Finished: Yes
Enclosed: Yes
Contiguous: Yes
Permitted: Yes
Wet space: No
Addition: No
Conversion: No

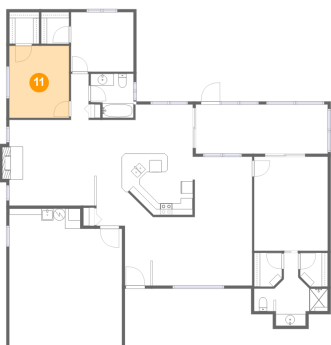
10 Floor 1 - Patio



Max Dimensions: 14'6" x 15'1"
Calculated Area: 220 sq. ft
Included: No

Heated: No
Finished: Yes
Enclosed: No
Contiguous: Yes
Permitted: Yes
Wet space: No
Addition: No
Conversion: No

11 Floor 1 - Bedroom

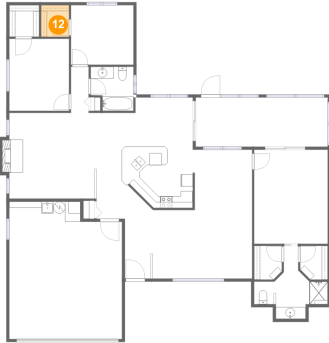


Max Dimensions: 10'0" x 12'1"
Calculated Area: 121 sq. ft
Included: Yes

Heated: Yes
Finished: Yes
Enclosed: Yes
Contiguous: Yes
Permitted: Yes
Wet space: No
Addition: No
Conversion: No

746 Hawks Ridge Road, Port Orange, Volusia County, Florida,
United States, 32127

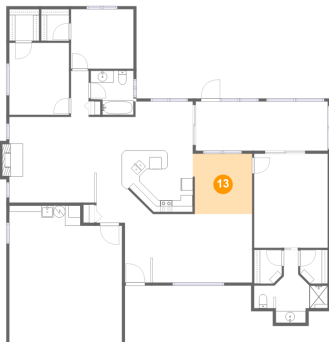
12 Floor 1 - W.I.C.



Max Dimensions: 4'8" x 5'4"
Calculated Area: 25 sq. ft
Included: Yes

Heated: Yes
Finished: Yes
Enclosed: Yes
Contiguous: Yes
Permitted: Yes
Wet space: No
Addition: No
Conversion: No

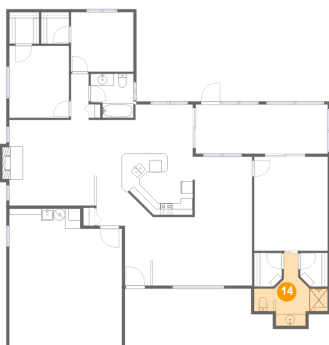
13 Floor 1 - Dining Area



Max Dimensions: 10'0" x 10'2"
Calculated Area: 99 sq. ft
Included: Yes

Heated: Yes
Finished: Yes
Enclosed: Yes
Contiguous: Yes
Permitted: Yes
Wet space: No
Addition: No
Conversion: No

14 Floor 1 - Primary Bath

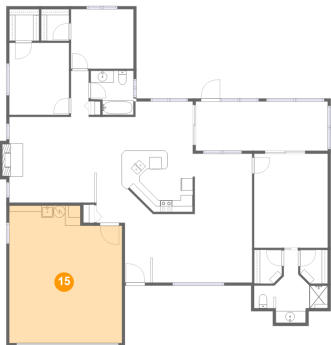


Max Dimensions: 12'4" x 12'3"
Calculated Area: 77 sq. ft
Included: Yes

Heated: Yes
Finished: Yes
Enclosed: Yes
Contiguous: Yes
Permitted: Yes
Wet space: Yes
Addition: No
Conversion: No

746 Hawks Ridge Road, Port Orange, Volusia County, Florida,
United States, 32127

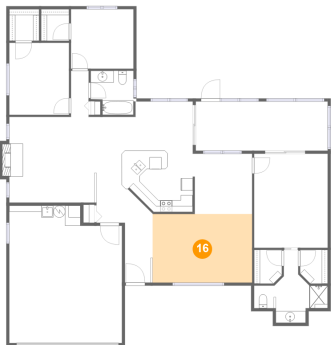
15 Floor 1 - Garage



Max Dimensions: 18'11" x 23'1"
Calculated Area: 413 sq. ft
Included: No

Heated: No
Finished: No
Enclosed: Yes
Contiguous: Yes
Permitted: Yes
Wet space: No
Addition: No
Conversion: No

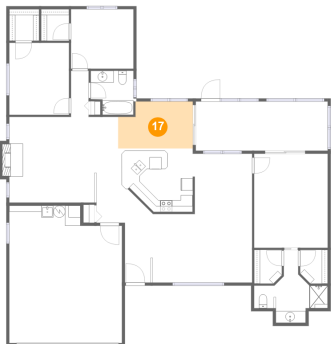
16 Floor 1 - Living Room



Max Dimensions: 16'9" x 11'6"
Calculated Area: 192 sq. ft
Included: Yes

Heated: Yes
Finished: Yes
Enclosed: Yes
Contiguous: Yes
Permitted: Yes
Wet space: No
Addition: No
Conversion: No

17 Floor 1 - Breakfast Nook

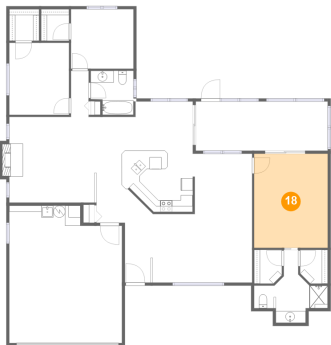


Max Dimensions: 12'7" x 7'11"
Calculated Area: 92 sq. ft
Included: Yes

Heated: Yes
Finished: Yes
Enclosed: Yes
Contiguous: Yes
Permitted: Yes
Wet space: No
Addition: No
Conversion: No

746 Hawks Ridge Road, Port Orange, Volusia County, Florida,
United States, 32127

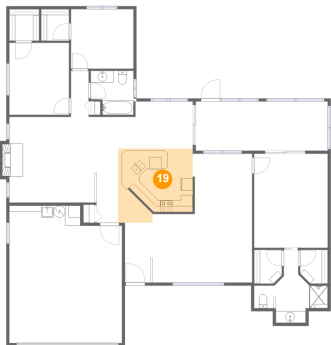
18 Floor 1 - Primary Bedroom



Max Dimensions: 12'4" x 15'10"
Calculated Area: 195 sq. ft
Included: Yes

Heated: Yes
Finished: Yes
Enclosed: Yes
Contiguous: Yes
Permitted: Yes
Wet space: No
Addition: No
Conversion: No

19 Floor 1 - Kitchen



Max Dimensions: 12'7" x 12'6"
Calculated Area: 142 sq. ft
Included: Yes

Heated: Yes
Finished: Yes
Enclosed: Yes
Contiguous: Yes
Permitted: Yes
Wet space: No
Addition: No
Conversion: No