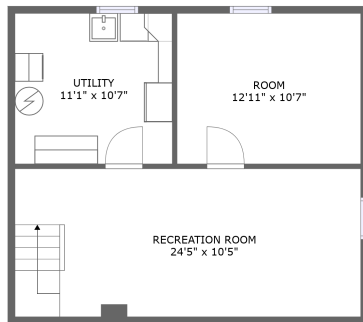
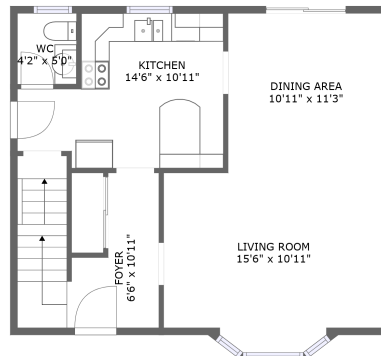


Home report

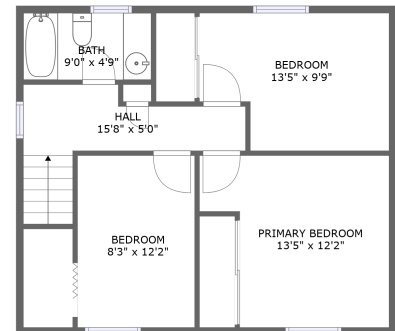
518 Oxford Street East, Kemptville, United Counties of Leeds and Grenville, Ontario, Canada, K0G 1J0



FLOOR 1



FLOOR 2



FLOOR 3

Total Area: 1548 sq. ft

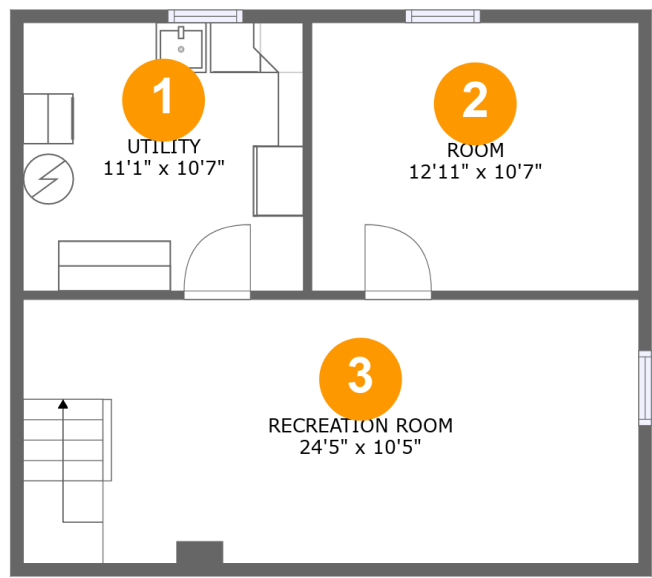
Below Ground: 404 sq. ft, Floor 2: 572 sq. ft, Floor 3: 572 sq. ft

Excluded: Utility 118 sq. ft, Embedded window 12 sq. ft, Walls: 145 sq. ft

Property summary



518 Oxford Street East, Kemptville, United Counties of Leeds and Grenville, Ontario, Canada, K0G 1J0

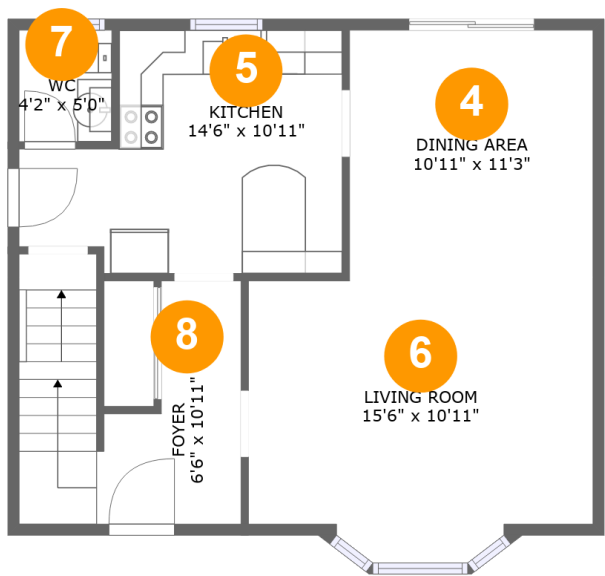


Room dimensions

Floor 1 Below ground Total:404sqft Excluded: 118sqft

#		Max Dimensions	sqft	Included
1	Utility	11'1" x 10'7"	118 sq. ft	No
2	Room	12'11" x 10'7"	138 sq. ft	Yes
3	Recreation Room	24'5" x 10'5"	255 sq. ft	Yes

518 Oxford Street East, Kemptville, United Counties of Leeds and Grenville, Ontario, Canada, K0G 1J0

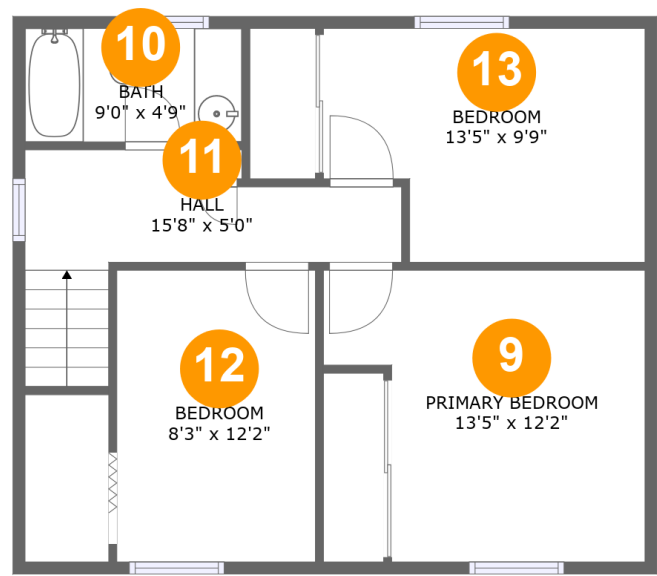


Room dimensions

Floor 2 Total:572sqft Excluded: 12sqft

#		Max Dimensions	sqft	Included
4	Dining Area	10'11" x 11'3"	123 sq. ft	Yes
5	Kitchen	14'6" x 10'11"	130 sq. ft	Yes
6	Living Room	15'6" x 10'11"	169 sq. ft	Yes
7	WC	4'2" x 5'0"	21 sq. ft	Yes
8	Foyer	6'6" x 10'11"	95 sq. ft	Yes

518 Oxford Street East, Kemptville, United Counties of Leeds and Grenville, Ontario, Canada, K0G 1J0



Room dimensions

Floor 3 Total:572sqft Excluded: 0sqft

#		Max Dimensions	sqft	Included
9	Primary Bedroom	13'5" x 12'2"	139 sq. ft	Yes
10	Bath	9'0" x 4'9"	43 sq. ft	Yes
11	Hall	15'8" x 5'0"	77 sq. ft	Yes
12	Bedroom	8'3" x 12'2"	100 sq. ft	Yes
13	Bedroom	13'5" x 9'9"	118 sq. ft	Yes

518 Oxford Street East, Kemptville, United Counties of Leeds and Grenville, Ontario, Canada, K0G 1J0

1 Floor 1 - Utility



Max Dimensions: 11'1" x 10'7"
Calculated Area: 118 sq. ft
Included: No

Heated: Yes
Finished: No
Enclosed: Yes
Contiguous: Yes
Permitted: Yes
Wet space: No
Addition: No
Conversion: No

2 Floor 1 - Room



Max Dimensions: 12'11" x 10'7"
Calculated Area: 138 sq. ft
Included: Yes

Heated: Yes
Finished: Yes
Enclosed: Yes
Contiguous: Yes
Permitted: Yes
Wet space: No
Addition: No
Conversion: No

518 Oxford Street East, Kemptville, United Counties of Leeds and Grenville, Ontario, Canada, K0G 1J0

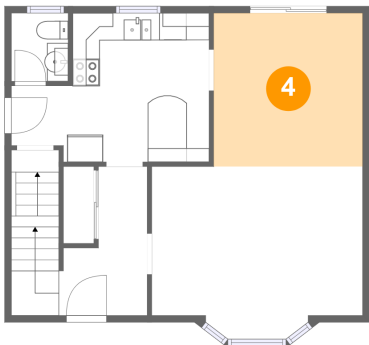
3 Floor 1 - Recreation Room



Max Dimensions: 24'5" x 10'5"
Calculated Area: 255 sq. ft
Included: Yes

Heated: Yes
Finished: Yes
Enclosed: Yes
Contiguous: Yes
Permitted: Yes
Wet space: No
Addition: No
Conversion: No

4 Floor 2 - Dining Area



Max Dimensions: 10'11" x 11'3"
Calculated Area: 123 sq. ft
Included: Yes

Heated: Yes
Finished: Yes
Enclosed: Yes
Contiguous: Yes
Permitted: Yes
Wet space: No
Addition: No
Conversion: No

5 Floor 2 - Kitchen

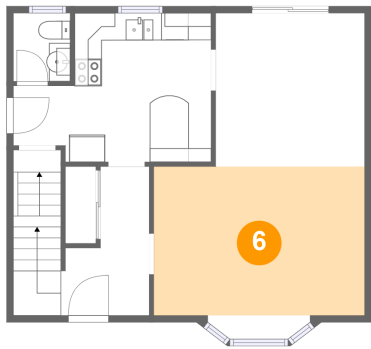


Max Dimensions: 14'6" x 10'11"
Calculated Area: 130 sq. ft
Included: Yes

Heated: Yes
Finished: Yes
Enclosed: Yes
Contiguous: Yes
Permitted: Yes
Wet space: No
Addition: No
Conversion: No

518 Oxford Street East, Kemptville, United Counties of Leeds and Grenville, Ontario, Canada, K0G 1J0

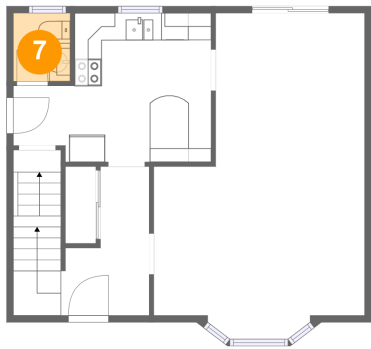
6 Floor 2 - Living Room



Max Dimensions: 15'6" x 10'11"
Calculated Area: 169 sq. ft
Included: Yes

Heated: Yes
Finished: Yes
Enclosed: Yes
Contiguous: Yes
Permitted: Yes
Wet space: No
Addition: No
Conversion: No

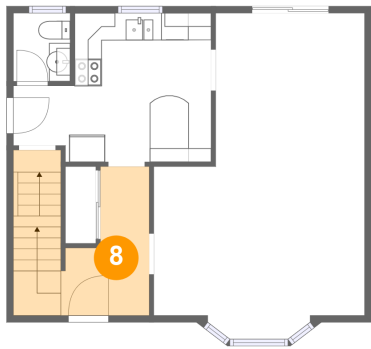
7 Floor 2 - WC



Max Dimensions: 4'2" x 5'0"
Calculated Area: 21 sq. ft
Included: Yes

Heated: Yes
Finished: Yes
Enclosed: Yes
Contiguous: Yes
Permitted: Yes
Wet space: Yes
Addition: No
Conversion: No

8 Floor 2 - Foyer

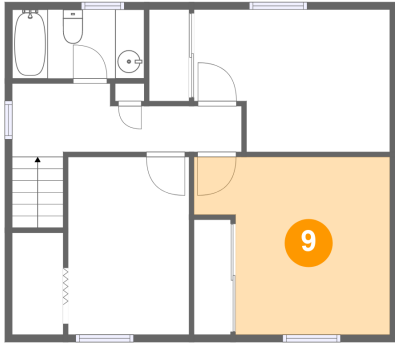


Max Dimensions: 6'6" x 10'11"
Calculated Area: 95 sq. ft
Included: Yes

Heated: Yes
Finished: Yes
Enclosed: Yes
Contiguous: Yes
Permitted: Yes
Wet space: No
Addition: No
Conversion: No

518 Oxford Street East, Kemptville, United Counties of Leeds and Grenville, Ontario, Canada, K0G 1J0

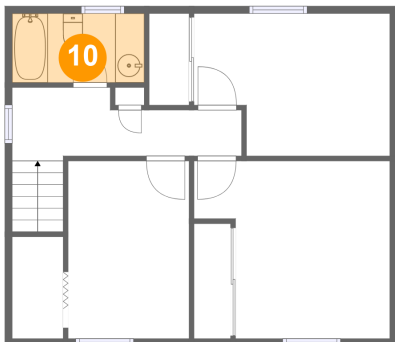
9 Floor 3 - Primary Bedroom



Max Dimensions: 13'5" x 12'2"
Calculated Area: 139 sq. ft
Included: Yes

Heated: Yes
Finished: Yes
Enclosed: Yes
Contiguous: Yes
Permitted: Yes
Wet space: No
Addition: No
Conversion: No

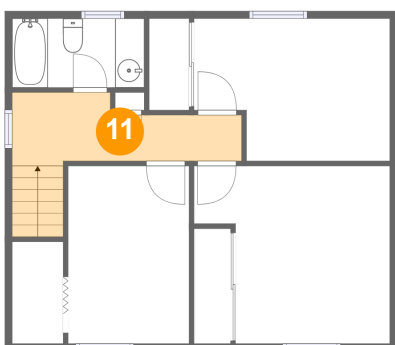
10 Floor 3 - Bath



Max Dimensions: 9'0" x 4'9"
Calculated Area: 43 sq. ft
Included: Yes

Heated: Yes
Finished: Yes
Enclosed: Yes
Contiguous: Yes
Permitted: Yes
Wet space: Yes
Addition: No
Conversion: No

11 Floor 3 - Hall

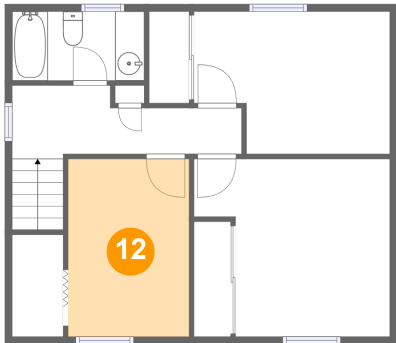


Max Dimensions: 15'8" x 5'0"
Calculated Area: 77 sq. ft
Included: Yes

Heated: Yes
Finished: Yes
Enclosed: Yes
Contiguous: Yes
Permitted: Yes
Wet space: No
Addition: No
Conversion: No

518 Oxford Street East, Kemptville, United Counties of Leeds and Grenville, Ontario, Canada, K0G 1J0

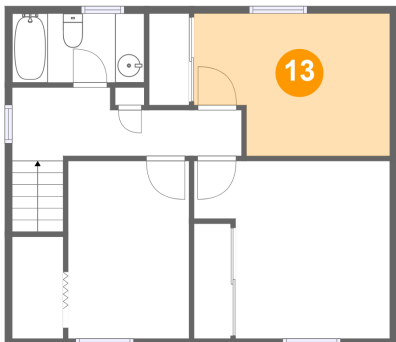
12 Floor 3 - Bedroom



Max Dimensions: 8'3" x 12'2"
Calculated Area: 100 sq. ft
Included: Yes

Heated: Yes
Finished: Yes
Enclosed: Yes
Contiguous: Yes
Permitted: Yes
Wet space: No
Addition: No
Conversion: No

13 Floor 3 - Bedroom



Max Dimensions: 13'5" x 9'9"
Calculated Area: 118 sq. ft
Included: Yes

Heated: Yes
Finished: Yes
Enclosed: Yes
Contiguous: Yes
Permitted: Yes
Wet space: No
Addition: No
Conversion: No