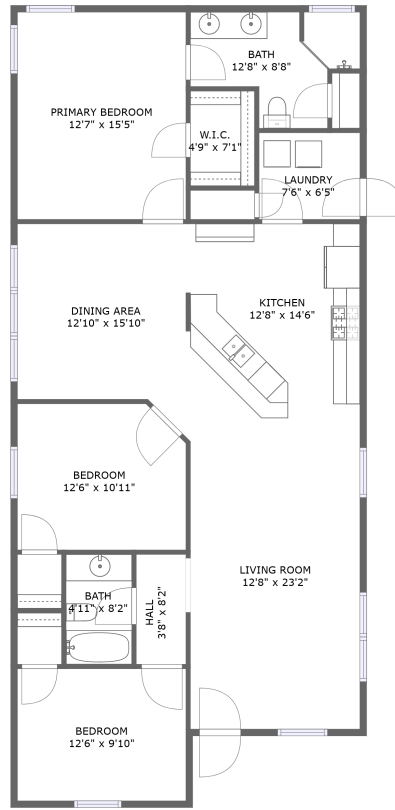



6286 Pebblebrook Lane, Williamson, Wayne County, New York, United States, 14589



Property summary


 **0** Garages

 **3** Bedrooms

 **2** Bathrooms

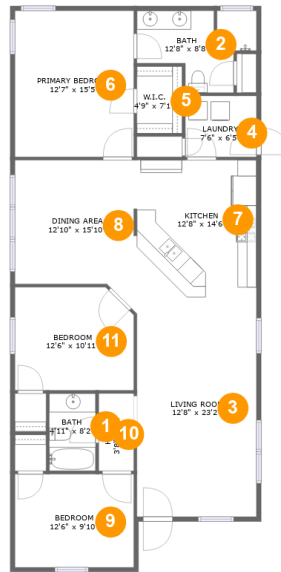
 **0** Half baths

 **1** Floors

 **1,517** Gross living area sqft

 **1,517** Total sqft

6286 Pebblebrook Lane, Williamson, Wayne County, New York, United States, 14589



Room dimensions

Floor 1

Total sqft: 1517 Living area: 1517

#		Dimensions	sqft	Counted as living area
1	Bath	4'11" x 8'2"	40 sq. ft	Yes
2	Bath	12'8" x 8'8"	82 sq. ft	Yes
3	Living Room	12'8" x 23'2"	293 sq. ft	Yes
4	Utility	7'6" x 6'5"	49 sq. ft	Yes
5	Cl	4'9" x 7'1"	34 sq. ft	Yes
6	Primary Bedroom	12'7" x 15'5"	194 sq. ft	Yes
7	Kitchen	12'8" x 14'6"	183 sq. ft	Yes
8	Dining Room	12'10" x 15'10"	174 sq. ft	Yes
9	Bedroom	12'6" x 9'10"	124 sq. ft	Yes
10	Hall	3'8" x 8'2"	30 sq. ft	Yes
11	Bedroom	12'6" x 10'11"	132 sq. ft	Yes

Scan captured on Wed, 30 Oct 2024 17:12:58 GMT

Information is calculated by Cubicasa technology deemed highly reliable but not guaranteed.

6286 Pebblebrook Lane, Williamson, Wayne County, New York, United States, 14589

1 Floor 1 - Bath



Dimensions: 4'11" x 8'2"
Area: 40 sq. ft
Counted as living area: Yes

Heated: Yes
Finished: Yes
Enclosed: Yes
Contiguous: Yes
Permitted: Yes
Wet space: Yes
Addition: No
Conversion: No

2 Floor 1 - Bath

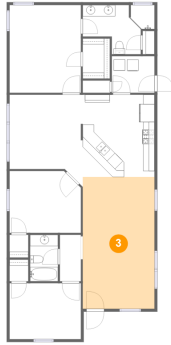


Dimensions: 12'8" x 8'8"
Area: 82 sq. ft
Counted as living area: Yes

Heated: Yes
Finished: Yes
Enclosed: Yes
Contiguous: Yes
Permitted: Yes
Wet space: Yes
Addition: No
Conversion: No

6286 Pebblebrook Lane, Williamson, Wayne County, New York, United States, 14589

3 Floor 1 - Living Room



Dimensions: 12'8" x 23'2"
Area: 293 sq. ft
Counted as living area: Yes

Heated: Yes
Finished: Yes
Enclosed: Yes
Contiguous: Yes
Permitted: Yes
Wet space: No
Addition: No
Conversion: No

4 Floor 1 - Utility



Dimensions: 7'6" x 6'5"
Area: 49 sq. ft
Counted as living area: Yes

Heated: Yes
Finished: Yes
Enclosed: Yes
Contiguous: Yes
Permitted: Yes
Wet space: No
Addition: No
Conversion: No

5 Floor 1 - Cl

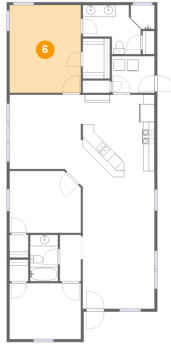


Dimensions: 4'9" x 7'1"
Area: 34 sq. ft
Counted as living area: Yes

Heated: Yes
Finished: Yes
Enclosed: Yes
Contiguous: Yes
Permitted: Yes
Wet space: No
Addition: No
Conversion: No

6286 Pebblebrook Lane, Williamson, Wayne County, New York, United States, 14589

6 Floor 1 - Primary Bedroom



Dimensions: 12'7" x 15'5"
Area: 194 sq. ft
Counted as living area: Yes

Heated: Yes
Finished: Yes
Enclosed: Yes
Contiguous: Yes
Permitted: Yes
Wet space: No
Addition: No
Conversion: No

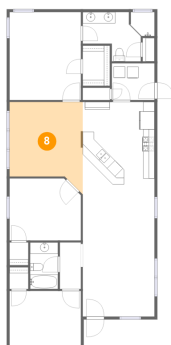
7 Floor 1 - Kitchen



Dimensions: 12'8" x 14'6"
Area: 183 sq. ft
Counted as living area: Yes

Heated: Yes
Finished: Yes
Enclosed: Yes
Contiguous: Yes
Permitted: Yes
Wet space: No
Addition: No
Conversion: No

8 Floor 1 - Dining Room



Dimensions: 12'10" x 15'10"
Area: 174 sq. ft
Counted as living area: Yes

Heated: Yes
Finished: Yes
Enclosed: Yes
Contiguous: Yes
Permitted: Yes
Wet space: No
Addition: No
Conversion: No

6286 Pebblebrook Lane, Williamson, Wayne County, New York, United States, 14589

9 Floor 1 - Bedroom



Dimensions: 12'6" x 9'10"
Area: 124 sq. ft
Counted as living area: Yes

Heated: Yes
Finished: Yes
Enclosed: Yes
Contiguous: Yes
Permitted: Yes
Wet space: No
Addition: No
Conversion: No

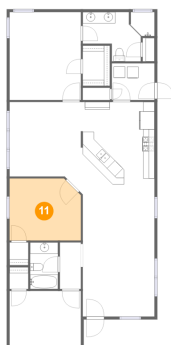
10 Floor 1 - Hall



Dimensions: 3'8" x 8'2"
Area: 30 sq. ft
Counted as living area: Yes

Heated: Yes
Finished: Yes
Enclosed: Yes
Contiguous: Yes
Permitted: Yes
Wet space: No
Addition: No
Conversion: No

11 Floor 1 - Bedroom



Dimensions: 12'6" x 10'11"
Area: 132 sq. ft
Counted as living area: Yes

Heated: Yes
Finished: Yes
Enclosed: Yes
Contiguous: Yes
Permitted: Yes
Wet space: No
Addition: No
Conversion: No