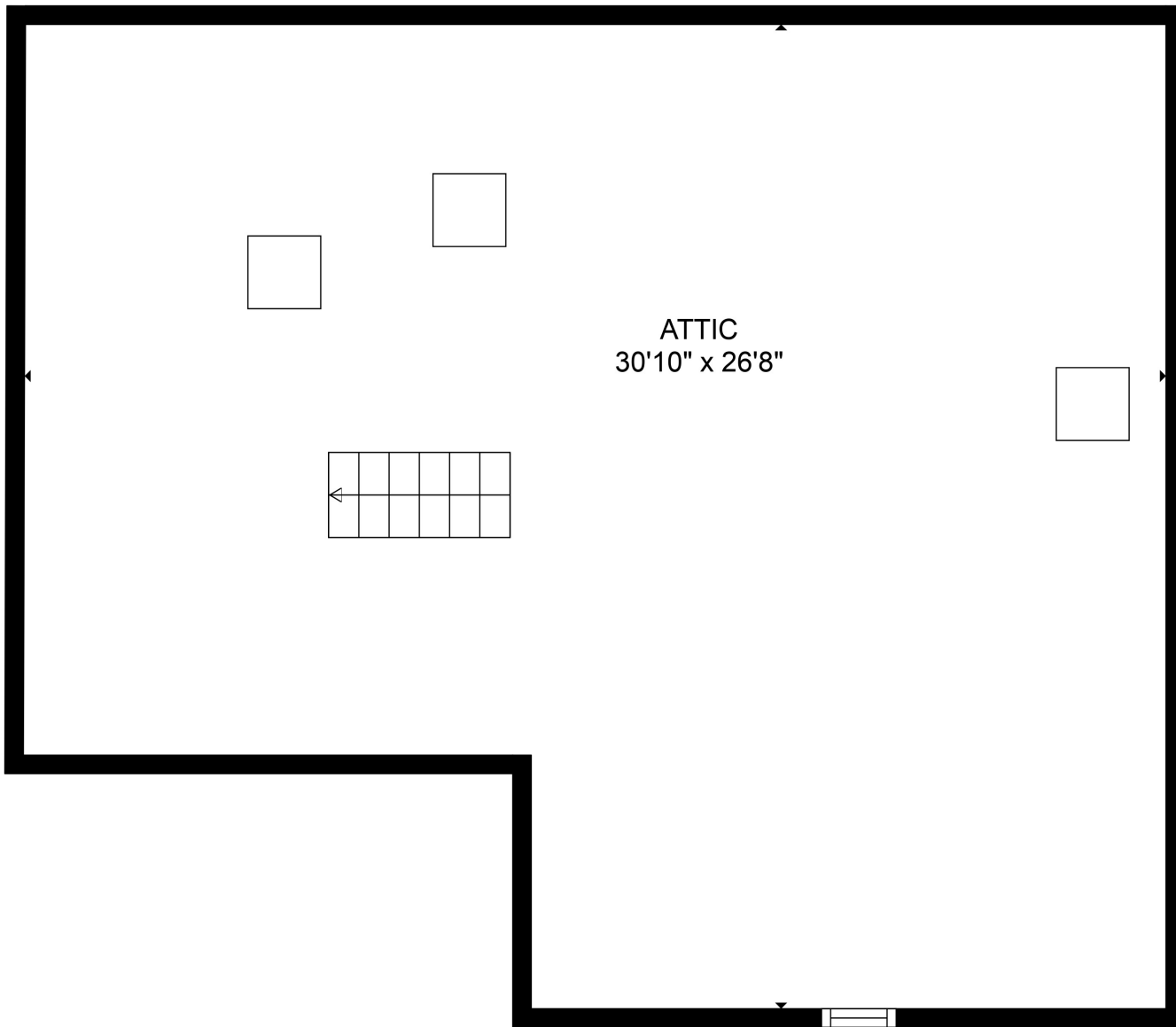


TOTAL: 3556 sq. ft
 FLOOR 1: 2202 sq. ft, FLOOR 2: 1354 sq. ft, FLOOR 3: 0 sq. ft
 EXCLUDED AREAS: GARAGE: 935 sq. ft, PORCH: 407 sq. ft, PATIO: 1535 sq. ft,
 LOW CEILING: 587 sq. ft, ELECTRICAL ROOM: 96 sq. ft, OPEN TO BELOW: 404 sq. ft,
 ATTIC: 469 sq. ft

SIZES AND DIMENSIONS ARE APPROXIMATE, ACTUAL MAY VARY.

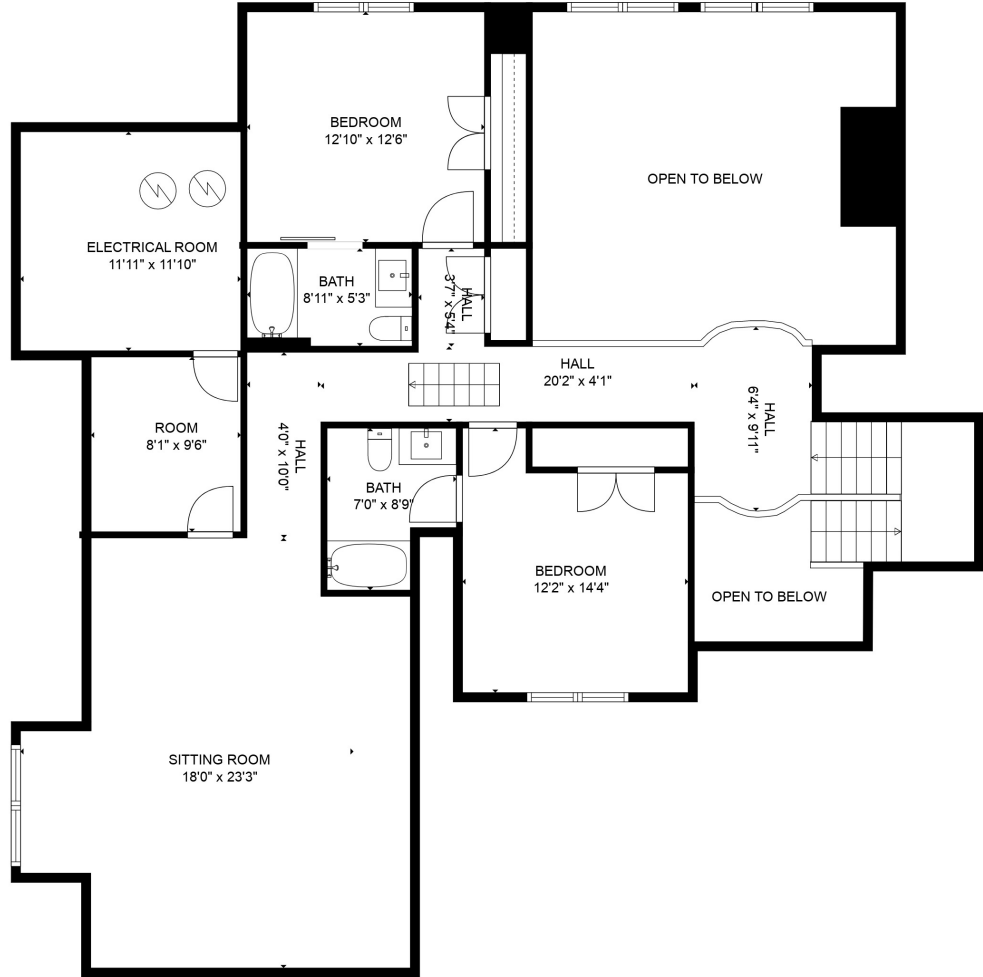
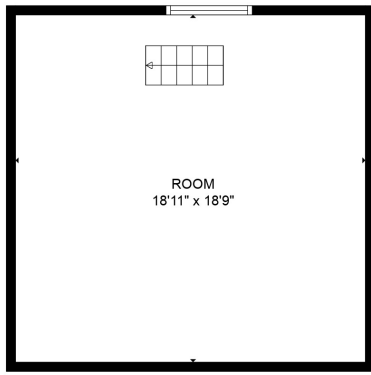


ATTIC
30'10" x 26'8"

TOTAL: 3556 sq. ft

FLOOR 1: 2202 sq. ft, FLOOR 2: 1354 sq. ft, FLOOR 3: 0 sq. ft
EXCLUDED AREAS: GARAGE: 935 sq. ft, PORCH: 407 sq. ft, PATIO: 1535 sq. ft,
LOW CEILING: 587 sq. ft, ELECTRICAL ROOM: 96 sq. ft, OPEN TO BELOW: 404 sq. ft,
ATTIC: 469 sq. ft

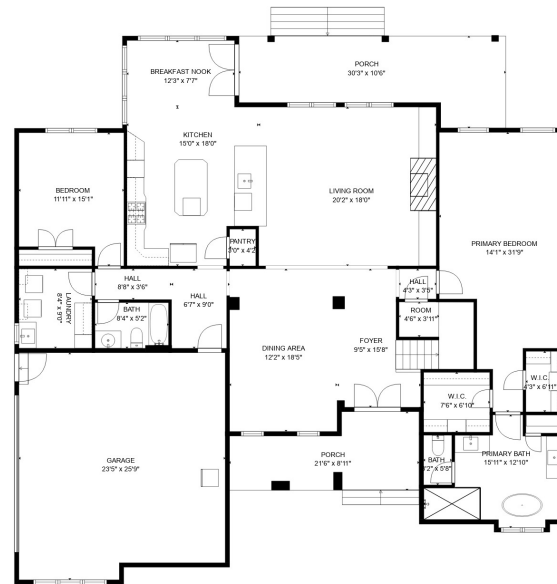
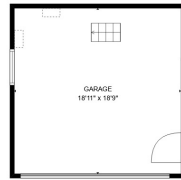
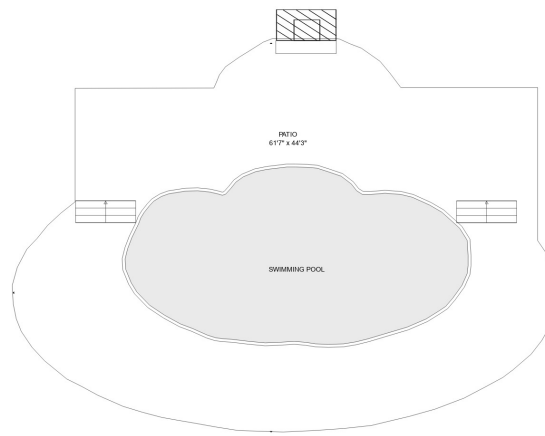
SIZES AND DIMENSIONS ARE APPROXIMATE, ACTUAL MAY VARY.



TOTAL: 3556 sq. ft

FLOOR 1: 2202 sq. ft, FLOOR 2: 1354 sq. ft, FLOOR 3: 0 sq. ft
 EXCLUDED AREAS: GARAGE: 935 sq. ft, PORCH: 407 sq. ft, PATIO: 1535 sq. ft,
 LOW CEILING: 587 sq. ft, ELECTRICAL ROOM: 96 sq. ft, OPEN TO BELOW: 404 sq. ft,
 ATTIC: 469 sq. ft

SIZES AND DIMENSIONS ARE APPROXIMATE, ACTUAL MAY VARY.



TOTAL: 3556 sq. ft

FLOOR 1: 2202 sq. ft, FLOOR 2: 1354 sq. ft, FLOOR 3: 0 sq. ft
 EXCLUDED AREAS: GARAGE: 935 sq. ft, PORCH: 407 sq. ft, PATIO: 1535 sq. ft,
 LOW CEILING: 587 sq. ft, ELECTRICAL ROOM: 96 sq. ft, OPEN TO BELOW: 404 sq. ft,
 ATTIC: 469 sq. ft

SIZES AND DIMENSIONS ARE APPROXIMATE, ACTUAL MAY VARY.