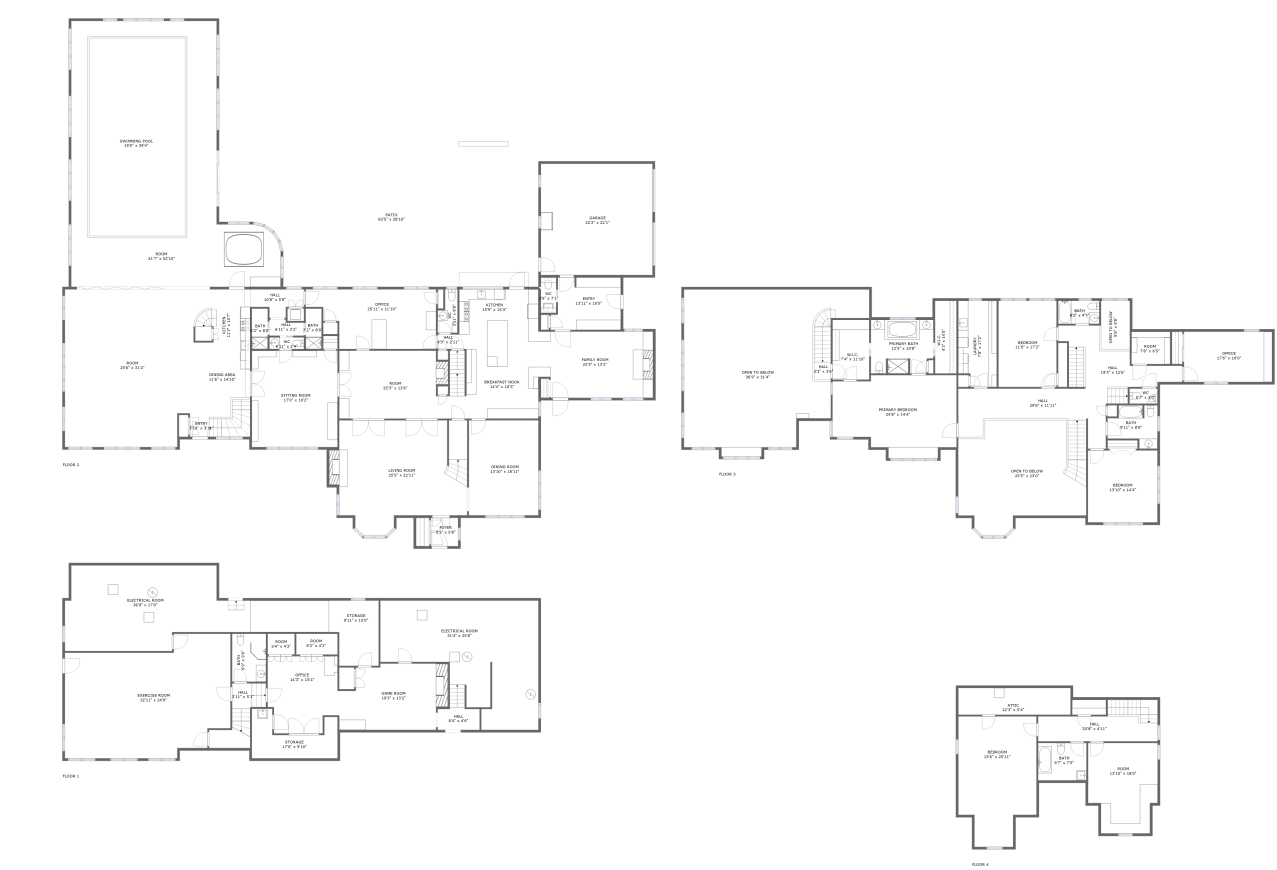



Home report


12 Old Meadow Road, Dover, Massachusetts 02030, United States




Property summary

1


Garages

4

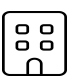
Bedrooms

5


Bathrooms

4


Half baths

4

Floors

9,719

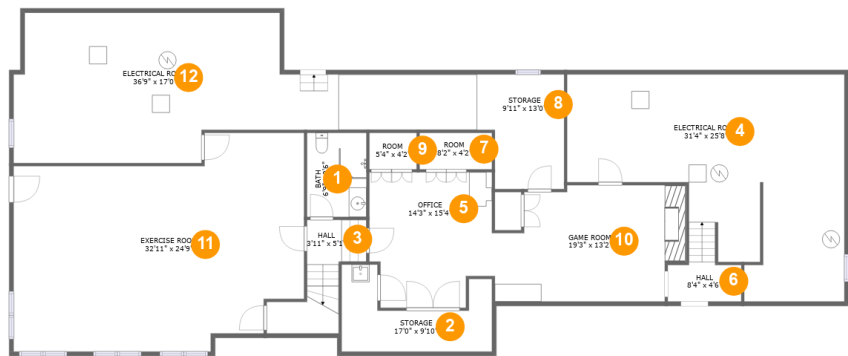
Gross living area sqft

15,195

Total sqft

Home report

12 Old Meadow Road, Dover, Massachusetts 02030, United States



Room dimensions

Floor 1 Total sqft: 3032 Living area: 1509

#		Dimensions	sqft	Counted as living area
1	Bath	6'9" x 9'6"	64 sq. ft	Yes
2	Storage	17'0" x 9'10"	109 sq. ft	No
3	Hall	3'11" x 5'1"	77 sq. ft	Yes
4	Electrical Room	31'4" x 25'8"	588 sq. ft	No
5	Office	14'3" x 15'4"	197 sq. ft	Yes
6	Hall	8'4" x 4'6"	35 sq. ft	Yes
7	Room	8'2" x 4'2"	34 sq. ft	Yes
8	Storage	9'11" x 13'0"	213 sq. ft	No
9	Room	5'4" x 4'2"	22 sq. ft	Yes
10	Game Room	19'3" x 13'2"	253 sq. ft	Yes
11	Exercise Room	32'11" x 24'9"	693 sq. ft	Yes

Home report

12 Old Meadow Road, Dover, Massachusetts 02030, United States

#		Dimensions	sqft	Counted as living area
12	Electrical Room	36'9" x 17'0"	513 sq. ft	No

12 Old Meadow Road, Dover, Massachusetts 02030, United States



Room dimensions

Floor 2 Total sqft: 7406 Living area: 5201

#		Dimensions	sqft	Counted as living area
13	Entry	3'10" x 3'11"	62 sq. ft	Yes
14	WC	3'0" x 7'1"	21 sq. ft	Yes
15	Kitchen	15'9" x 15'4"	236 sq. ft	Yes
16	Garage	22'2" x 22'1"	490 sq. ft	No
17	Dining Area	11'6" x 14'10"	157 sq. ft	Yes
18	WC	6'11" x 2'4"	16 sq. ft	Yes
19	Room	25'3" x 13'6"	325 sq. ft	Yes
20	Dining Room	13'10" x 18'11"	261 sq. ft	Yes
21	Office	25'11" x 11'10"	260 sq. ft	Yes
22	Hall	10'8" x 5'8"	45 sq. ft	Yes
23	Entry	13'11" x 10'5"	134 sq. ft	Yes

Home report

12 Old Meadow Road, Dover, Massachusetts 02030, United States

#		Dimensions	sqft	Counted as living area
24	Room	25'6" x 31'4"	775 sq. ft	Yes
25	Breakfast Nook	14'4" x 10'5"	149 sq. ft	Yes
26	Foyer	5'5" x 5'8"	31 sq. ft	Yes
27	WC	3'11" x 8'8"	28 sq. ft	Yes
28	Bath	3'2" x 8'0"	25 sq. ft	Yes
29	Room	41'7" x 52'10"	1677 sq. ft	Yes
30	Bath	3'2" x 8'0"	25 sq. ft	Yes
31	Hall	6'11" x 3'2"	20 sq. ft	Yes
32	Living Room	25'5" x 22'11"	520 sq. ft	Yes
33	Hall	4'3" x 2'11"	12 sq. ft	Yes
34	Patio	63'5" x 28'10"	1678 sq. ft	No
35	Sitting Room	17'0" x 19'2"	326 sq. ft	Yes
36	Swimming Pool	19'0" x 39'4"	751 sq. ft	No
37	Kitchen	11'3" x 10'7"	116 sq. ft	Yes
38	Family Room	22'9" x 13'2"	290 sq. ft	Yes

Home report

12 Old Meadow Road, Dover, Massachusetts 02030, United States



Room dimensions

Floor 3 Total sqft: 3711 Living area: 2245

#		Dimensions	sqft	Counted as living area
39	Bedroom	11'6" x 17'2"	197 sq. ft	Yes
40	WC	5'7" x 3'0"	17 sq. ft	Yes
41	Primary Bath	12'5" x 10'8"	127 sq. ft	Yes
42	Open To Below	36'9" x 31'4"	883 sq. ft	No
43	W.I.C.	4'3" x 14'5"	62 sq. ft	Yes
44	Bedroom	13'10" x 14'4"	197 sq. ft	Yes
45	Office	17'6" x 10'0"	175 sq. ft	Yes
46	Laundry	7'8" x 17'2"	125 sq. ft	Yes
47	Hall	19'3" x 12'6"	169 sq. ft	Yes
48	Bath	8'2" x 4'7"	37 sq. ft	Yes
49	Hall	3'3" x 3'6"	51 sq. ft	Yes

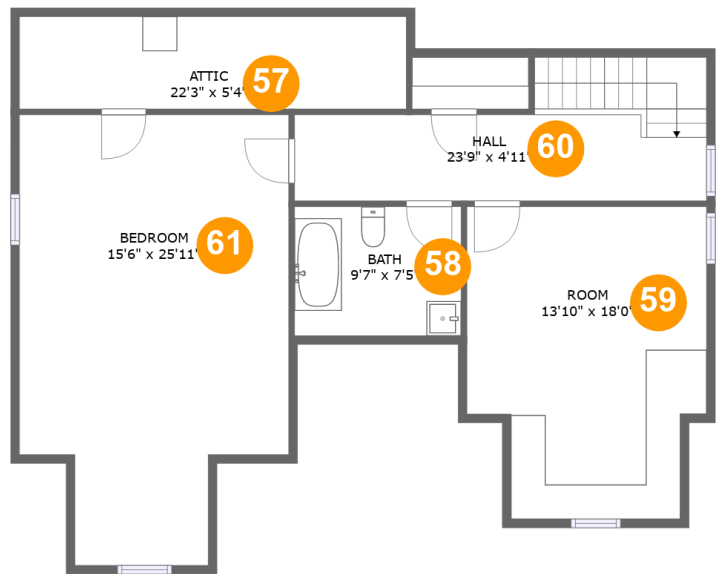
Home report

12 Old Meadow Road, Dover, Massachusetts 02030, United States

#		Dimensions	sqft	Counted as living area
50	Open To Below	25'5" x 23'0"	442 sq. ft	No
51	Open To Below	5'8" x 9'8"	55 sq. ft	No
52	W.I.C.	7'4" x 11'10"	87 sq. ft	Yes
53	Primary Bedroom	24'8" x 14'4"	350 sq. ft	Yes
54	Hall	29'8" x 11'11"	285 sq. ft	Yes
55	Room	7'8" x 6'5"	49 sq. ft	Yes
56	Bath	9'11" x 8'8"	66 sq. ft	Yes

Home report

12 Old Meadow Road, Dover, Massachusetts 02030, United States



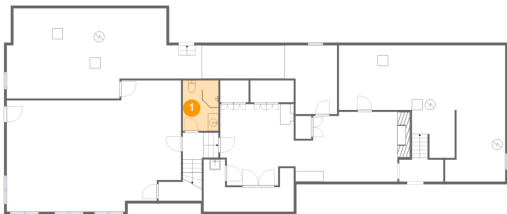
Room dimensions

Floor 4 Total sqft: 1046 Living area: 764

#		Dimensions	sqft	Counted as living area
57	Attic	22'3" x 5'4"	54 sq. ft	No
58	Bath	9'7" x 7'5"	71 sq. ft	Yes
59	Room	13'10" x 18'0"	202 sq. ft	Yes
60	Hall	23'9" x 4'11"	150 sq. ft	Yes
61	Bedroom	15'6" x 25'11"	263 sq. ft	Yes

12 Old Meadow Road, Dover, Massachusetts 02030, United States

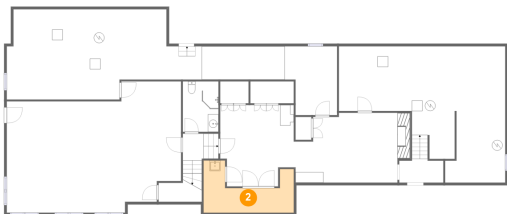
1 Floor 1 - Bath



Dimensions: 6'9" x 9'6"
Area: 64 sq. ft
Counted as living area: Yes

Heated: Yes
Finished: Yes
Enclosed: Yes
Contiguous: Yes
Permitted: Yes
Wet space: Yes
Addition: No
Conversion: No

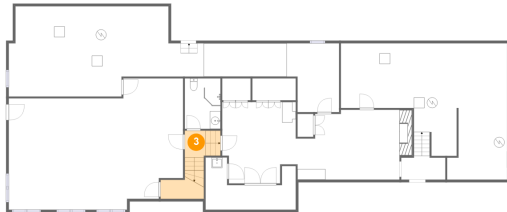
2 Floor 1 - Storage



Dimensions: 17'0" x 9'10"
Area: 109 sq. ft
Counted as living area: No

Heated: No
Finished: No
Enclosed: No
Contiguous: Yes
Permitted: Yes
Wet space: No
Addition: No
Conversion: No

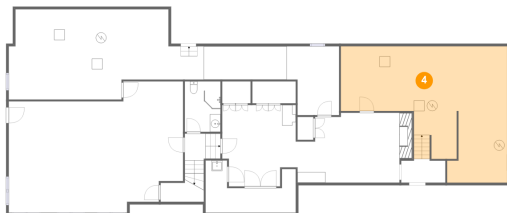
3 Floor 1 - Hall



Dimensions: 3'11" x 5'1"
Area: 77 sq. ft
Counted as living area: Yes

Heated: Yes
Finished: Yes
Enclosed: Yes
Contiguous: Yes
Permitted: Yes
Wet space: No
Addition: No
Conversion: No

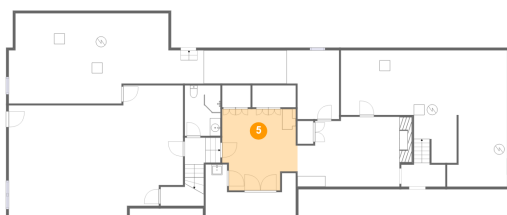
4 Floor 1 - Electrical Room



Dimensions: 31'4" x 25'8"
Area: 588 sq. ft
Counted as living area: No

Heated: No
Finished: No
Enclosed: Yes
Contiguous: Yes
Permitted: Yes
Wet space: No
Addition: No
Conversion: No

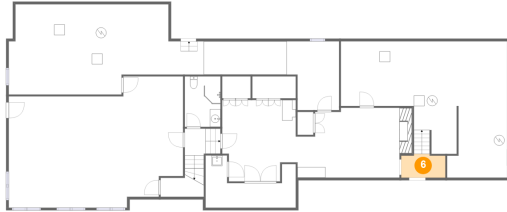
5 Floor 1 - Office



Dimensions: 14'3" x 15'4"
Area: 197 sq. ft
Counted as living area: Yes

Heated: Yes
Finished: Yes
Enclosed: Yes
Contiguous: Yes
Permitted: Yes
Wet space: No
Addition: No
Conversion: No

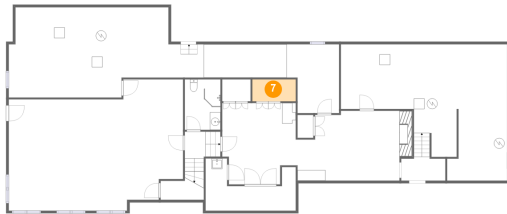
6 Floor 1 - Hall



Dimensions: 8'4" x 4'6"
Area: 35 sq. ft
Counted as living area: Yes

Heated: Yes
Finished: Yes
Enclosed: Yes
Contiguous: Yes
Permitted: Yes
Wet space: No
Addition: No
Conversion: No

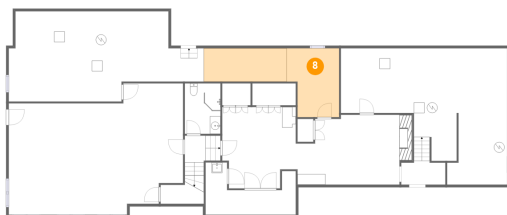
7 Floor 1 - Room



Dimensions: 8'2" x 4'2"
Area: 34 sq. ft
Counted as living area: Yes

Heated: Yes
Finished: Yes
Enclosed: Yes
Contiguous: Yes
Permitted: Yes
Wet space: No
Addition: No
Conversion: No

8 Floor 1 - Storage



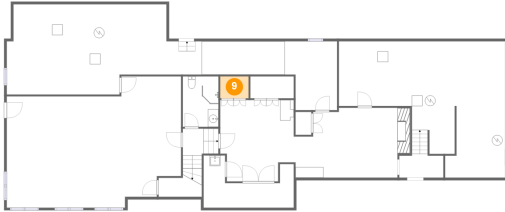
Dimensions: 9'11" x 13'0"
Area: 213 sq. ft
Counted as living area: No

Heated: No
Finished: No
Enclosed: No
Contiguous: Yes
Permitted: Yes
Wet space: No
Addition: No
Conversion: No

Home report

12 Old Meadow Road, Dover, Massachusetts 02030, United States

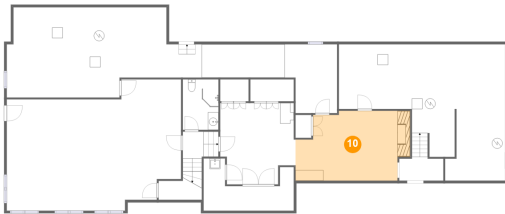
9 Floor 1 - Room



Dimensions: 5'4" x 4'2"
Area: 22 sq. ft
Counted as living area: Yes

Heated: Yes
Finished: Yes
Enclosed: Yes
Contiguous: Yes
Permitted: Yes
Wet space: No
Addition: No
Conversion: No

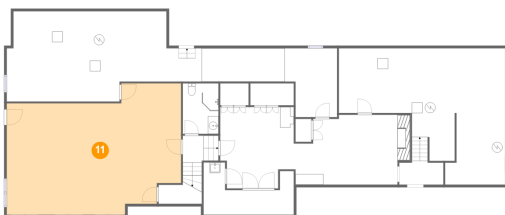
10 Floor 1 - Game Room



Dimensions: 19'3" x 13'2"
Area: 253 sq. ft
Counted as living area: Yes

Heated: Yes
Finished: Yes
Enclosed: Yes
Contiguous: Yes
Permitted: Yes
Wet space: No
Addition: No
Conversion: No

11 Floor 1 - Exercise Room

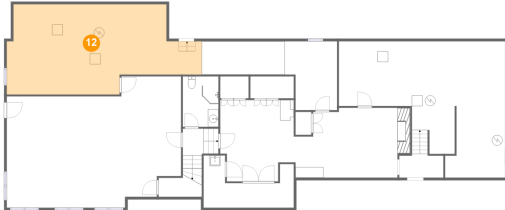


Dimensions: 32'11" x 24'9"
Area: 693 sq. ft
Counted as living area: Yes

Heated: Yes
Finished: Yes
Enclosed: Yes
Contiguous: Yes
Permitted: Yes
Wet space: No
Addition: No
Conversion: No

12 Old Meadow Road, Dover, Massachusetts 02030, United States

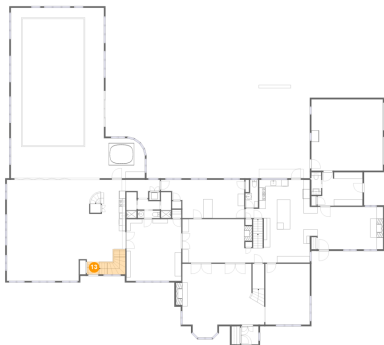
12 Floor 1 - Electrical Room



Dimensions: 36'9" x 17'0"
Area: 513 sq. ft
Counted as living area: No

Heated: No
Finished: No
Enclosed: Yes
Contiguous: Yes
Permitted: Yes
Wet space: No
Addition: No
Conversion: No

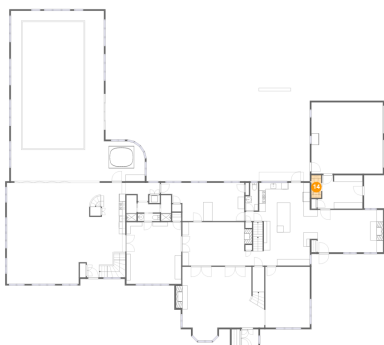
13 Floor 2 - Entry



Dimensions: 3'10" x 3'11"
Area: 62 sq. ft
Counted as living area: Yes

Heated: Yes
Finished: Yes
Enclosed: Yes
Contiguous: Yes
Permitted: Yes
Wet space: No
Addition: No
Conversion: No

14 Floor 2 - WC

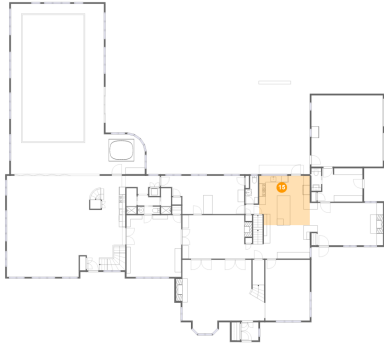


Dimensions: 3'0" x 7'1"
Area: 21 sq. ft
Counted as living area: Yes

Heated: Yes
Finished: Yes
Enclosed: Yes
Contiguous: Yes
Permitted: Yes
Wet space: Yes
Addition: No
Conversion: No

12 Old Meadow Road, Dover, Massachusetts 02030, United States

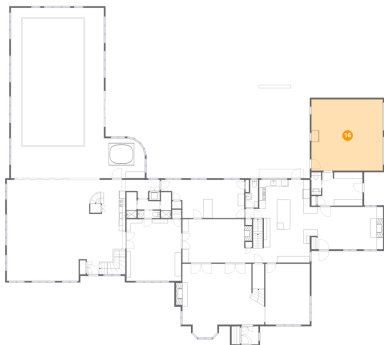
15 Floor 2 - Kitchen



Dimensions: 15'9" x 15'4"
Area: 236 sq. ft
Counted as living area: Yes

Heated: Yes
Finished: Yes
Enclosed: Yes
Contiguous: Yes
Permitted: Yes
Wet space: No
Addition: No
Conversion: No

16 Floor 2 - Garage



Dimensions: 22'2" x 22'1"
Area: 490 sq. ft
Counted as living area: No

Heated: No
Finished: No
Enclosed: Yes
Contiguous: Yes
Permitted: Yes
Wet space: No
Addition: No
Conversion: No

17 Floor 2 - Dining Area

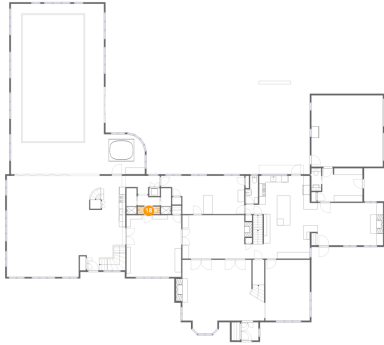


Dimensions: 11'6" x 14'10"
Area: 157 sq. ft
Counted as living area: Yes

Heated: Yes
Finished: Yes
Enclosed: Yes
Contiguous: Yes
Permitted: Yes
Wet space: No
Addition: No
Conversion: No

12 Old Meadow Road, Dover, Massachusetts 02030, United States

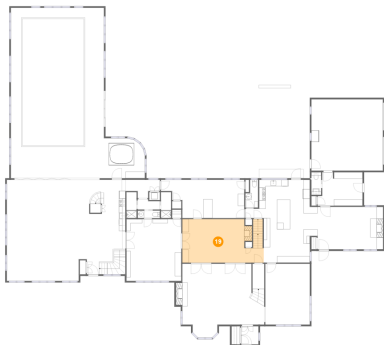
18 Floor 2 - WC



Dimensions: 6'11" x 2'4"
Area: 16 sq. ft
Counted as living area: Yes

Heated: Yes
Finished: Yes
Enclosed: Yes
Contiguous: Yes
Permitted: Yes
Wet space: No
Addition: No
Conversion: No

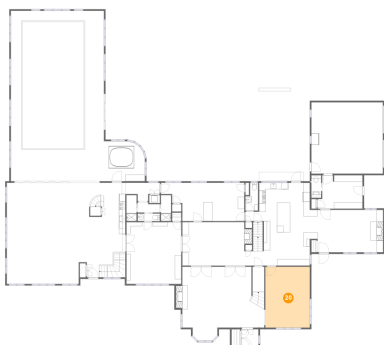
19 Floor 2 - Room



Dimensions: 25'3" x 13'6"
Area: 325 sq. ft
Counted as living area: Yes

Heated: Yes
Finished: Yes
Enclosed: Yes
Contiguous: Yes
Permitted: Yes
Wet space: No
Addition: No
Conversion: No

20 Floor 2 - Dining Room

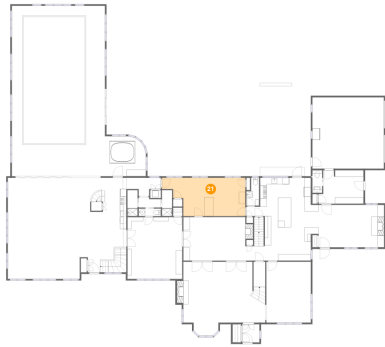


Dimensions: 13'10" x 18'11"
Area: 261 sq. ft
Counted as living area: Yes

Heated: Yes
Finished: Yes
Enclosed: Yes
Contiguous: Yes
Permitted: Yes
Wet space: No
Addition: No
Conversion: No

12 Old Meadow Road, Dover, Massachusetts 02030, United States

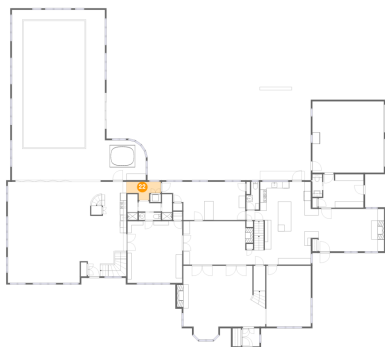
21 Floor 2 - Office



Dimensions: 25'11" x 11'10"
Area: 260 sq. ft
Counted as living area: Yes

Heated: Yes
Finished: Yes
Enclosed: Yes
Contiguous: Yes
Permitted: Yes
Wet space: No
Addition: No
Conversion: No

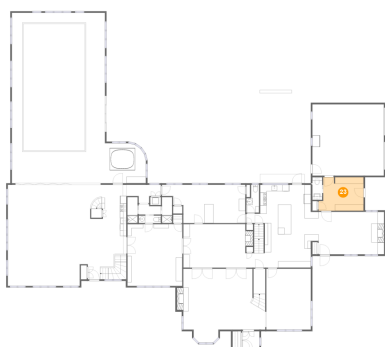
22 Floor 2 - Hall



Dimensions: 10'8" x 5'8"
Area: 45 sq. ft
Counted as living area: Yes

Heated: Yes
Finished: Yes
Enclosed: Yes
Contiguous: Yes
Permitted: Yes
Wet space: No
Addition: No
Conversion: No

23 Floor 2 - Entry

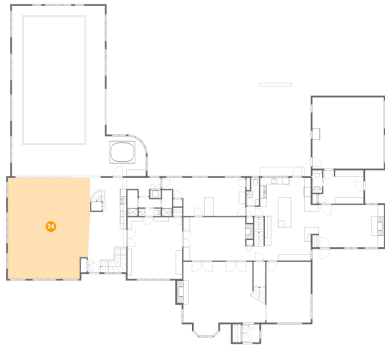


Dimensions: 13'11" x 10'5"
Area: 134 sq. ft
Counted as living area: Yes

Heated: Yes
Finished: Yes
Enclosed: Yes
Contiguous: Yes
Permitted: Yes
Wet space: No
Addition: No
Conversion: No

12 Old Meadow Road, Dover, Massachusetts 02030, United States

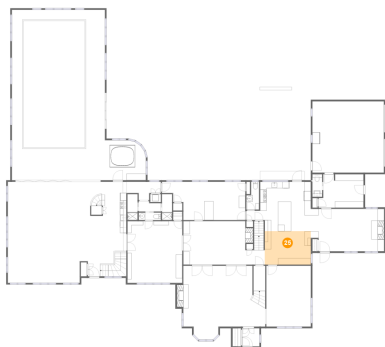
24 Floor 2 - Room



Dimensions: 25'6" x 31'4"
Area: 775 sq. ft
Counted as living area: Yes

Heated: Yes
Finished: Yes
Enclosed: Yes
Contiguous: Yes
Permitted: Yes
Wet space: No
Addition: No
Conversion: No

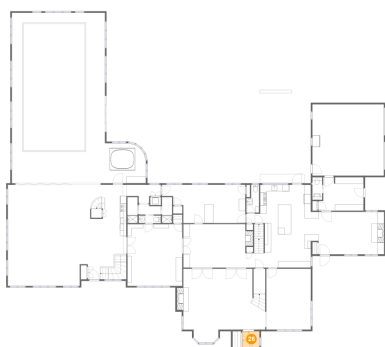
25 Floor 2 - Breakfast Nook



Dimensions: 14'4" x 10'5"
Area: 149 sq. ft
Counted as living area: Yes

Heated: Yes
Finished: Yes
Enclosed: Yes
Contiguous: Yes
Permitted: Yes
Wet space: No
Addition: No
Conversion: No

26 Floor 2 - Foyer

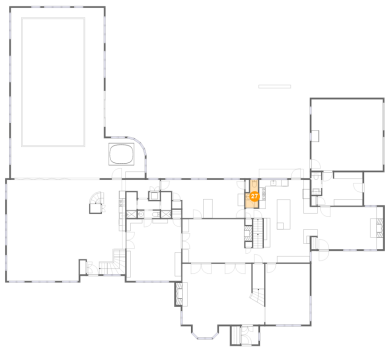


Dimensions: 5'5" x 5'8"
Area: 31 sq. ft
Counted as living area: Yes

Heated: Yes
Finished: Yes
Enclosed: Yes
Contiguous: Yes
Permitted: Yes
Wet space: No
Addition: No
Conversion: No

12 Old Meadow Road, Dover, Massachusetts 02030, United States

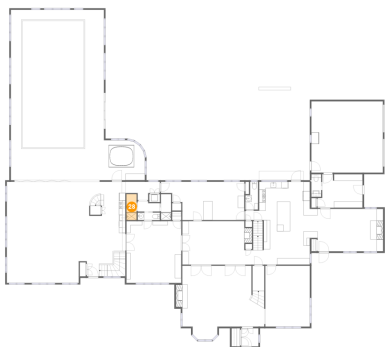
27 Floor 2 - WC



Dimensions: 3'11" x 8'8"
Area: 28 sq. ft
Counted as living area: Yes

Heated: Yes
Finished: Yes
Enclosed: Yes
Contiguous: Yes
Permitted: Yes
Wet space: No
Addition: No
Conversion: No

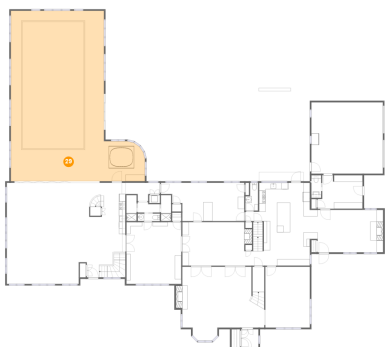
28 Floor 2 - Bath



Dimensions: 3'2" x 8'0"
Area: 25 sq. ft
Counted as living area: Yes

Heated: Yes
Finished: Yes
Enclosed: Yes
Contiguous: Yes
Permitted: Yes
Wet space: Yes
Addition: No
Conversion: No

29 Floor 2 - Room

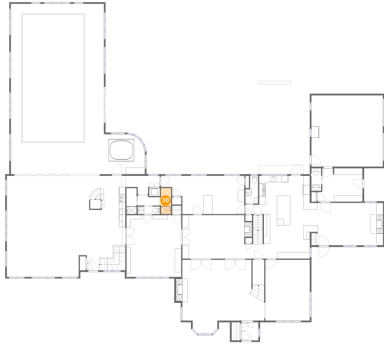


Dimensions: 41'7" x 52'10"
Area: 1677 sq. ft
Counted as living area: Yes

Heated: Yes
Finished: Yes
Enclosed: Yes
Contiguous: Yes
Permitted: Yes
Wet space: No
Addition: No
Conversion: No

12 Old Meadow Road, Dover, Massachusetts 02030, United States

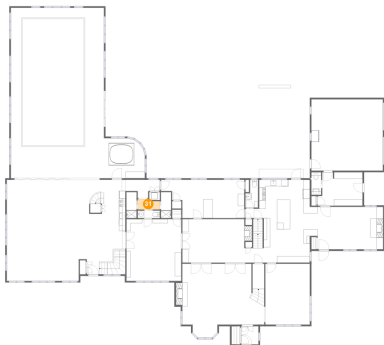
30 Floor 2 - Bath



Dimensions: 3'2" x 8'0"
Area: 25 sq. ft
Counted as living area: Yes

Heated: Yes
Finished: Yes
Enclosed: Yes
Contiguous: Yes
Permitted: Yes
Wet space: Yes
Addition: No
Conversion: No

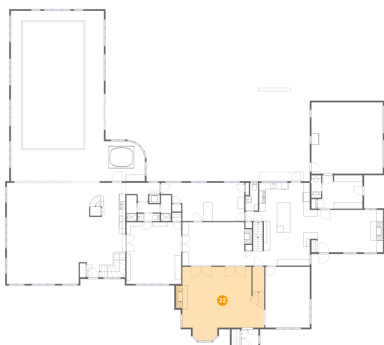
31 Floor 2 - Hall



Dimensions: 6'11" x 3'2"
Area: 20 sq. ft
Counted as living area: Yes

Heated: Yes
Finished: Yes
Enclosed: Yes
Contiguous: Yes
Permitted: Yes
Wet space: No
Addition: No
Conversion: No

32 Floor 2 - Living Room

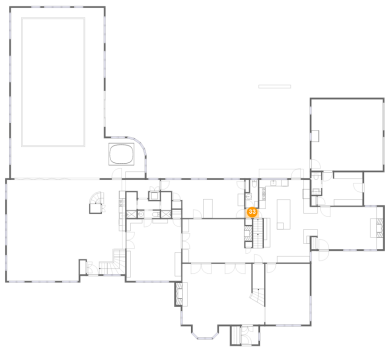


Dimensions: 25'5" x 22'11"
Area: 520 sq. ft
Counted as living area: Yes

Heated: Yes
Finished: Yes
Enclosed: Yes
Contiguous: Yes
Permitted: Yes
Wet space: No
Addition: No
Conversion: No

12 Old Meadow Road, Dover, Massachusetts 02030, United States

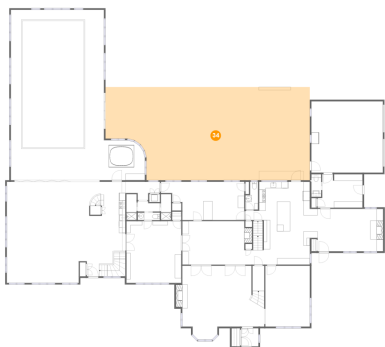
33 Floor 2 - Hall



Dimensions: 4'3" x 2'11"
Area: 12 sq. ft
Counted as living area: Yes

Heated: Yes
Finished: Yes
Enclosed: Yes
Contiguous: Yes
Permitted: Yes
Wet space: No
Addition: No
Conversion: No

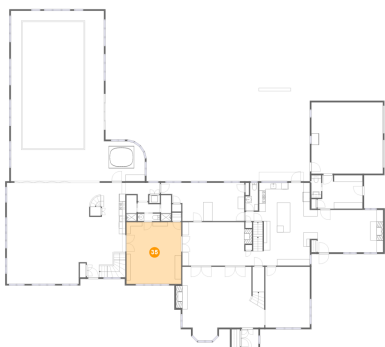
34 Floor 2 - Patio



Dimensions: 63'5" x 28'10"
Area: 1678 sq. ft
Counted as living area: No

Heated: No
Finished: Yes
Enclosed: No
Contiguous: Yes
Permitted: Yes
Wet space: No
Addition: No
Conversion: No

35 Floor 2 - Sitting Room

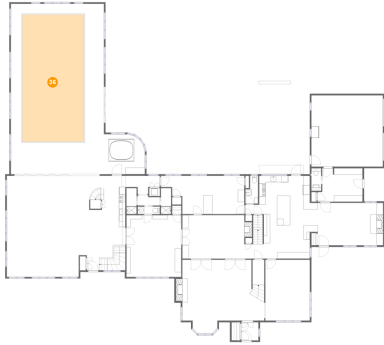


Dimensions: 17'0" x 19'2"
Area: 326 sq. ft
Counted as living area: Yes

Heated: Yes
Finished: Yes
Enclosed: Yes
Contiguous: Yes
Permitted: Yes
Wet space: No
Addition: No
Conversion: No

12 Old Meadow Road, Dover, Massachusetts 02030, United States

36 Floor 2 - Swimming Pool



Dimensions: 19'0" x 39'4"
Area: 751 sq. ft
Counted as living area: No

Heated: No
Finished: No
Enclosed: No
Contiguous: Yes
Permitted: No
Wet space: No
Addition: No
Conversion: No

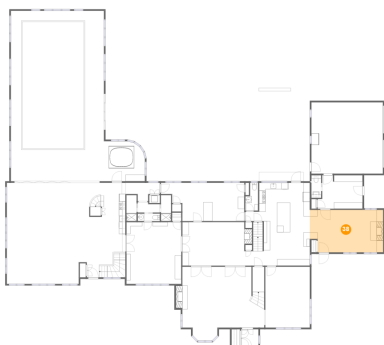
37 Floor 2 - Kitchen



Dimensions: 11'3" x 10'7"
Area: 116 sq. ft
Counted as living area: Yes

Heated: Yes
Finished: Yes
Enclosed: Yes
Contiguous: Yes
Permitted: Yes
Wet space: No
Addition: No
Conversion: No

38 Floor 2 - Family Room



Dimensions: 22'9" x 13'2"
Area: 290 sq. ft
Counted as living area: Yes

Heated: Yes
Finished: Yes
Enclosed: Yes
Contiguous: Yes
Permitted: Yes
Wet space: No
Addition: No
Conversion: No

12 Old Meadow Road, Dover, Massachusetts 02030, United States

39 Floor 3 - Bedroom



Dimensions: 11'6" x 17'2"
Area: 197 sq. ft
Counted as living area: Yes

Heated: Yes
Finished: Yes
Enclosed: Yes
Contiguous: Yes
Permitted: Yes
Wet space: No
Addition: No
Conversion: No

40 Floor 3 - WC



Dimensions: 5'7" x 3'0"
Area: 17 sq. ft
Counted as living area: Yes

Heated: Yes
Finished: Yes
Enclosed: Yes
Contiguous: Yes
Permitted: Yes
Wet space: No
Addition: No
Conversion: No

41 Floor 3 - Primary Bath



Dimensions: 12'5" x 10'8"
Area: 127 sq. ft
Counted as living area: Yes

Heated: Yes
Finished: Yes
Enclosed: Yes
Contiguous: Yes
Permitted: Yes
Wet space: Yes
Addition: No
Conversion: No

12 Old Meadow Road, Dover, Massachusetts 02030, United States

42 Floor 3 - Open To Below



Dimensions: 36'9" x 31'4"
Area: 883 sq. ft
Counted as living area: No

Heated: No
Finished: No
Enclosed: No
Contiguous: Yes
Permitted: No
Wet space: No
Addition: No
Conversion: No

43 Floor 3 - W.I.C.



Dimensions: 4'3" x 14'5"
Area: 62 sq. ft
Counted as living area: Yes

Heated: Yes
Finished: Yes
Enclosed: Yes
Contiguous: Yes
Permitted: Yes
Wet space: No
Addition: No
Conversion: No

44 Floor 3 - Bedroom



Dimensions: 13'10" x 14'4"
Area: 197 sq. ft
Counted as living area: Yes

Heated: Yes
Finished: Yes
Enclosed: Yes
Contiguous: Yes
Permitted: Yes
Wet space: No
Addition: No
Conversion: No

12 Old Meadow Road, Dover, Massachusetts 02030, United States

45 Floor 3 - Office



Dimensions: 17'6" x 10'0"
Area: 175 sq. ft
Counted as living area: Yes

Heated: Yes
Finished: Yes
Enclosed: Yes
Contiguous: Yes
Permitted: Yes
Wet space: No
Addition: No
Conversion: No

46 Floor 3 - Laundry



Dimensions: 7'8" x 17'2"
Area: 125 sq. ft
Counted as living area: Yes

Heated: Yes
Finished: Yes
Enclosed: Yes
Contiguous: Yes
Permitted: Yes
Wet space: No
Addition: No
Conversion: No

47 Floor 3 - Hall



Dimensions: 19'3" x 12'6"
Area: 169 sq. ft
Counted as living area: Yes

Heated: Yes
Finished: Yes
Enclosed: Yes
Contiguous: Yes
Permitted: Yes
Wet space: No
Addition: No
Conversion: No

12 Old Meadow Road, Dover, Massachusetts 02030, United States

48 Floor 3 - Bath



Dimensions: 8'2" x 4'7"
Area: 37 sq. ft
Counted as living area: Yes

Heated: Yes
Finished: Yes
Enclosed: Yes
Contiguous: Yes
Permitted: Yes
Wet space: Yes
Addition: No
Conversion: No

49 Floor 3 - Hall



Dimensions: 3'3" x 3'6"
Area: 51 sq. ft
Counted as living area: Yes

Heated: Yes
Finished: Yes
Enclosed: Yes
Contiguous: Yes
Permitted: Yes
Wet space: No
Addition: No
Conversion: No

50 Floor 3 - Open To Below



Dimensions: 25'5" x 23'0"
Area: 442 sq. ft
Counted as living area: No

Heated: No
Finished: No
Enclosed: No
Contiguous: Yes
Permitted: No
Wet space: No
Addition: No
Conversion: No

12 Old Meadow Road, Dover, Massachusetts 02030, United States

51 Floor 3 - Open To Below



Dimensions: 5'8" x 9'8"
Area: 55 sq. ft
Counted as living area: No

Heated: No
Finished: No
Enclosed: No
Contiguous: Yes
Permitted: No
Wet space: No
Addition: No
Conversion: No

52 Floor 3 - W.I.C.



Dimensions: 7'4" x 11'10"
Area: 87 sq. ft
Counted as living area: Yes

Heated: Yes
Finished: Yes
Enclosed: Yes
Contiguous: Yes
Permitted: Yes
Wet space: No
Addition: No
Conversion: No

53 Floor 3 - Primary Bedroom



Dimensions: 24'8" x 14'4"
Area: 350 sq. ft
Counted as living area: Yes

Heated: Yes
Finished: Yes
Enclosed: Yes
Contiguous: Yes
Permitted: Yes
Wet space: No
Addition: No
Conversion: No

12 Old Meadow Road, Dover, Massachusetts 02030, United States

54 Floor 3 - Hall



Dimensions: 29'8" x 11'11"
Area: 285 sq. ft
Counted as living area: Yes

Heated: Yes
Finished: Yes
Enclosed: Yes
Contiguous: Yes
Permitted: Yes
Wet space: No
Addition: No
Conversion: No

55 Floor 3 - Room



Dimensions: 7'8" x 6'5"
Area: 49 sq. ft
Counted as living area: Yes

Heated: Yes
Finished: Yes
Enclosed: Yes
Contiguous: Yes
Permitted: Yes
Wet space: No
Addition: No
Conversion: No

56 Floor 3 - Bath

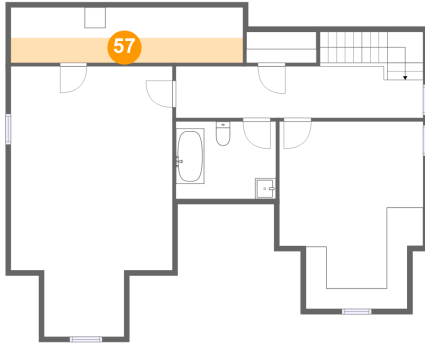


Dimensions: 9'11" x 8'8"
Area: 66 sq. ft
Counted as living area: Yes

Heated: Yes
Finished: Yes
Enclosed: Yes
Contiguous: Yes
Permitted: Yes
Wet space: Yes
Addition: No
Conversion: No

12 Old Meadow Road, Dover, Massachusetts 02030, United States

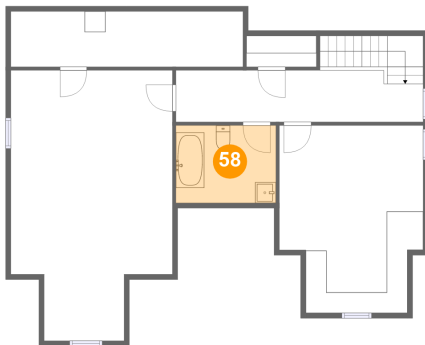
57 Floor 4 - Attic



Dimensions: 22'3" x 5'4"
Area: 54 sq. ft
Counted as living area: No

Heated: No
Finished: No
Enclosed: Yes
Contiguous: Yes
Permitted: Yes
Wet space: No
Addition: No
Conversion: No

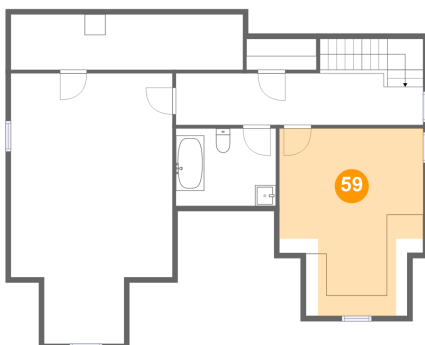
58 Floor 4 - Bath



Dimensions: 9'7" x 7'5"
Area: 71 sq. ft
Counted as living area: Yes

Heated: Yes
Finished: Yes
Enclosed: Yes
Contiguous: Yes
Permitted: Yes
Wet space: Yes
Addition: No
Conversion: No

59 Floor 4 - Room

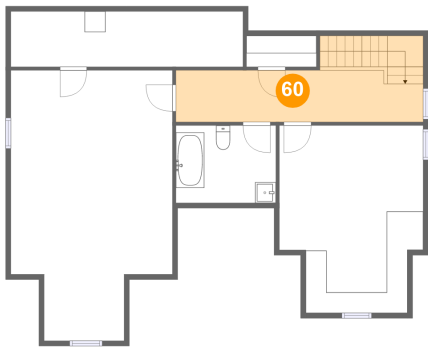


Dimensions: 13'10" x 18'0"
Area: 202 sq. ft
Counted as living area: Yes

Heated: Yes
Finished: Yes
Enclosed: Yes
Contiguous: Yes
Permitted: Yes
Wet space: No
Addition: No
Conversion: No

12 Old Meadow Road, Dover, Massachusetts 02030, United States

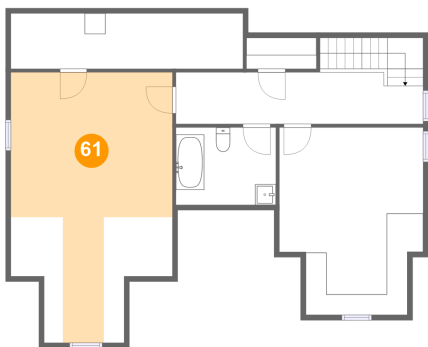
60 Floor 4 - Hall



Dimensions: 23'9" x 4'11"
Area: 150 sq. ft
Counted as living area: Yes

Heated: Yes
Finished: Yes
Enclosed: Yes
Contiguous: Yes
Permitted: Yes
Wet space: No
Addition: No
Conversion: No

61 Floor 4 - Bedroom



Dimensions: 15'6" x 25'11"
Area: 263 sq. ft
Counted as living area: Yes

Heated: Yes
Finished: Yes
Enclosed: Yes
Contiguous: Yes
Permitted: Yes
Wet space: No
Addition: No
Conversion: No