



Home report


135 Deep Woods Circle, Shepherdstown, Jefferson County,
West Virginia, United States, 25443





Property summary


 **1** Garages


 **6** Bedrooms

 **3** Bathrooms

 **1** Half baths

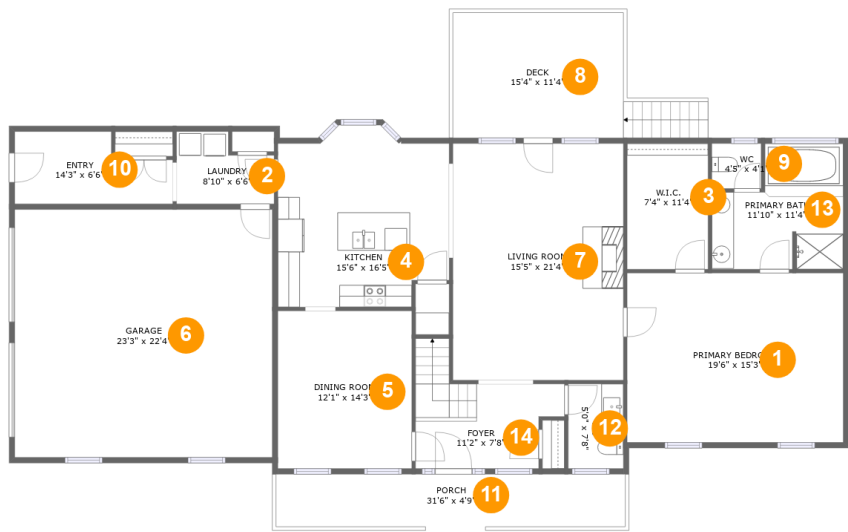
 **2** Floors

 **3,626** Gross living area sqft

 **4,541** Total sqft

Home report

135 Deep Woods Circle, Shepherdstown, Jefferson County,
West Virginia, United States, 25443



Room dimensions

Floor 1 Total sqft: 2588 Living area: 1721

#		Dimensions	sqft	Counted as living area
1	Primary Bedroom	19'6" x 15'3"	298 sq. ft	Yes
2	Laundry	8'10" x 6'6"	49 sq. ft	Yes
3	W.I.C.	7'4" x 11'4"	83 sq. ft	Yes
4	Kitchen	15'6" x 16'5"	229 sq. ft	Yes
5	Dining Room	12'1" x 14'3"	172 sq. ft	Yes
6	Garage	23'3" x 22'4"	520 sq. ft	No
7	Living Room	15'5" x 21'4"	329 sq. ft	Yes
8	Deck	15'4" x 11'4"	174 sq. ft	No
9	WC	4'5" x 4'1"	18 sq. ft	Yes
10	Entry	14'3" x 6'6"	79 sq. ft	Yes
11	Porch	31'6" x 4'9"	150 sq. ft	No

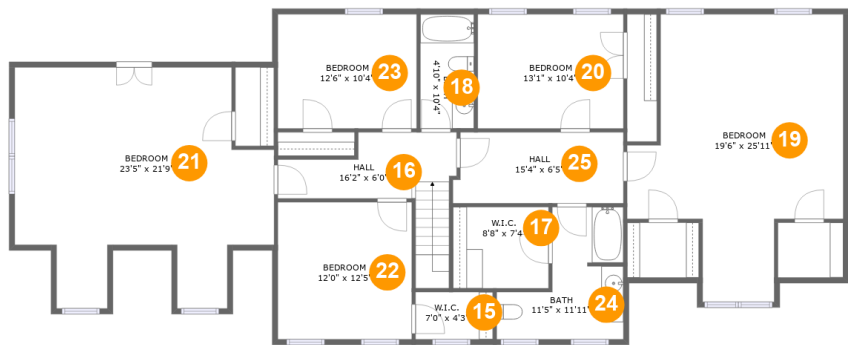
Home report

135 Deep Woods Circle, Shepherdstown, Jefferson County,
West Virginia, United States, 25443

#		Dimensions	sqft	Counted as living area
12	WC	5'0" x 7'8"	38 sq. ft	Yes
13	Primary Bath	11'10" x 11'4"	113 sq. ft	Yes
14	Foyer	11'2" x 7'8"	104 sq. ft	Yes

Home report

135 Deep Woods Circle, Shepherdstown, Jefferson County,
West Virginia, United States, 25443



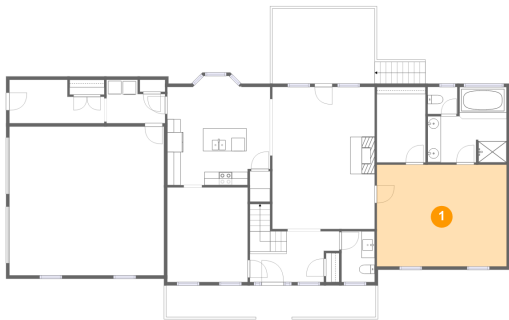
Room dimensions

Floor 2 Total sqft: 1953 Living area: 1905

#		Dimensions	sqft	Counted as living area
15	W.I.C.	7'0" x 4'3"	30 sq. ft	Yes
16	Hall	16'2" x 6'0"	102 sq. ft	Yes
17	W.I.C.	8'8" x 7'4"	63 sq. ft	Yes
18	Bath	4'10" x 10'4"	50 sq. ft	Yes
19	Bedroom	19'6" x 25'11"	373 sq. ft	Yes
20	Bedroom	13'1" x 10'4"	136 sq. ft	Yes
21	Bedroom	23'5" x 21'9"	392 sq. ft	Yes
22	Bedroom	12'0" x 12'5"	150 sq. ft	Yes
23	Bedroom	12'6" x 10'4"	129 sq. ft	Yes
24	Bath	11'5" x 11'11"	97 sq. ft	Yes
25	Hall	15'4" x 6'5"	96 sq. ft	Yes

135 Deep Woods Circle, Shepherdstown, Jefferson County,
West Virginia, United States, 25443

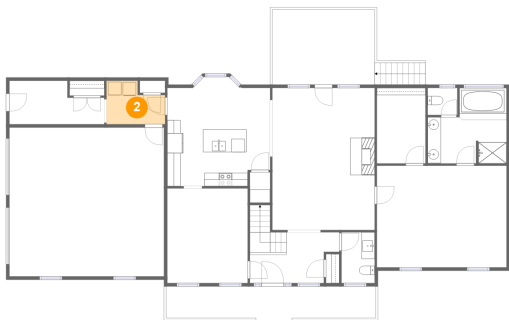
1 Floor 1 - Primary Bedroom



Dimensions: 19'6" x 15'3"
Area: 298 sq. ft
Counted as living area: Yes

Heated: Yes
Finished: Yes
Enclosed: Yes
Contiguous: Yes
Permitted: Yes
Wet space: No
Addition: No
Conversion: No

2 Floor 1 - Laundry



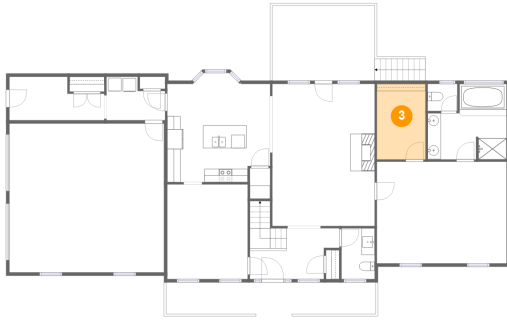
Dimensions: 8'10" x 6'6"
Area: 49 sq. ft
Counted as living area: Yes

Heated: Yes
Finished: Yes
Enclosed: Yes
Contiguous: Yes
Permitted: Yes
Wet space: No
Addition: No
Conversion: No

Home report

135 Deep Woods Circle, Shepherdstown, Jefferson County,
West Virginia, United States, 25443

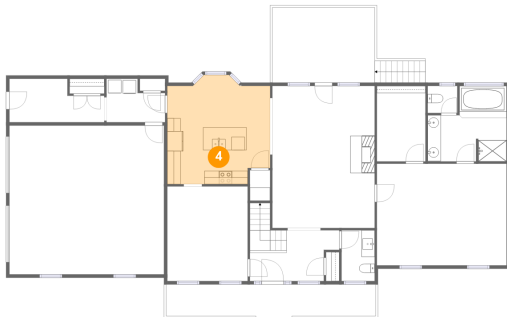
3 Floor 1 - W.I.C.



Dimensions: 7'4" x 11'4"
Area: 83 sq. ft
Counted as living area: Yes

Heated: Yes
Finished: Yes
Enclosed: Yes
Contiguous: Yes
Permitted: Yes
Wet space: No
Addition: No
Conversion: No

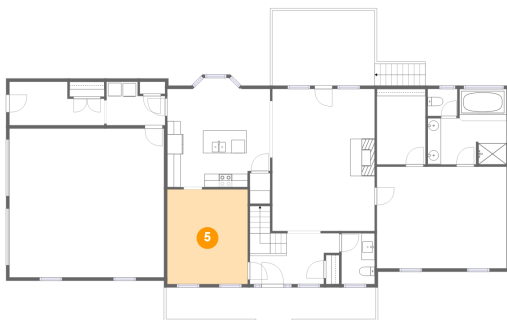
4 Floor 1 - Kitchen



Dimensions: 15'6" x 16'5"
Area: 229 sq. ft
Counted as living area: Yes

Heated: Yes
Finished: Yes
Enclosed: Yes
Contiguous: Yes
Permitted: Yes
Wet space: No
Addition: No
Conversion: No

5 Floor 1 - Dining Room

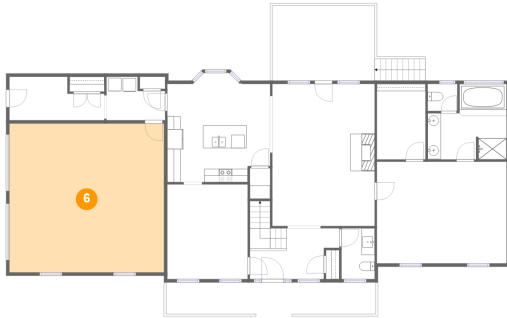


Dimensions: 12'1" x 14'3"
Area: 172 sq. ft
Counted as living area: Yes

Heated: Yes
Finished: Yes
Enclosed: Yes
Contiguous: Yes
Permitted: Yes
Wet space: No
Addition: No
Conversion: No

135 Deep Woods Circle, Shepherdstown, Jefferson County,
West Virginia, United States, 25443

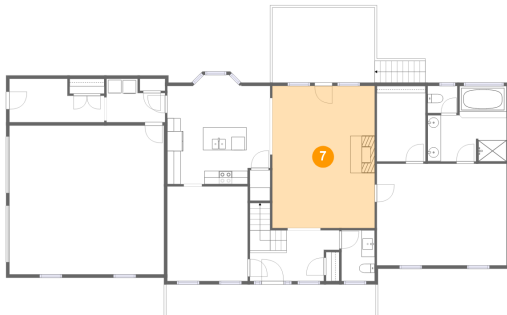
6 Floor 1 - Garage



Dimensions: 23'3" x 22'4"
Area: 520 sq. ft
Counted as living area: No

Heated: No
Finished: No
Enclosed: Yes
Contiguous: Yes
Permitted: Yes
Wet space: No
Addition: No
Conversion: No

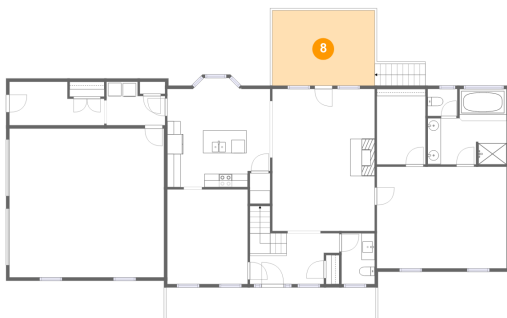
7 Floor 1 - Living Room



Dimensions: 15'5" x 21'4"
Area: 329 sq. ft
Counted as living area: Yes

Heated: Yes
Finished: Yes
Enclosed: Yes
Contiguous: Yes
Permitted: Yes
Wet space: No
Addition: No
Conversion: No

8 Floor 1 - Deck



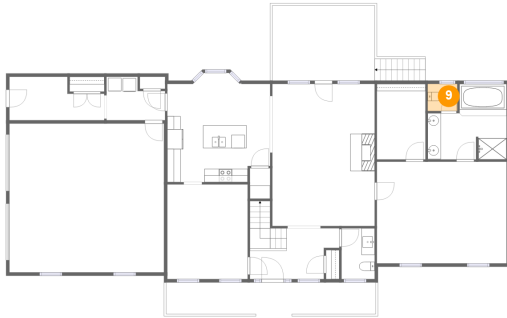
Dimensions: 15'4" x 11'4"
Area: 174 sq. ft
Counted as living area: No

Heated: No
Finished: Yes
Enclosed: No
Contiguous: Yes
Permitted: Yes
Wet space: No
Addition: No
Conversion: No

Home report

135 Deep Woods Circle, Shepherdstown, Jefferson County,
West Virginia, United States, 25443

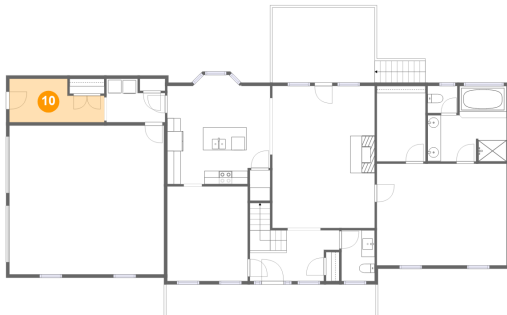
9 Floor 1 - WC



Dimensions: 4'5" x 4'1"
Area: 18 sq. ft
Counted as living area: Yes

Heated: Yes
Finished: Yes
Enclosed: Yes
Contiguous: Yes
Permitted: Yes
Wet space: Yes
Addition: No
Conversion: No

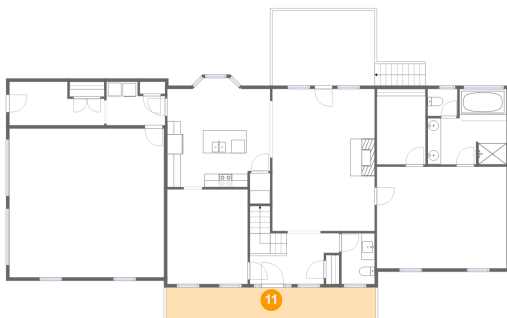
10 Floor 1 - Entry



Dimensions: 14'3" x 6'6"
Area: 79 sq. ft
Counted as living area: Yes

Heated: Yes
Finished: Yes
Enclosed: Yes
Contiguous: Yes
Permitted: Yes
Wet space: No
Addition: No
Conversion: No

11 Floor 1 - Porch



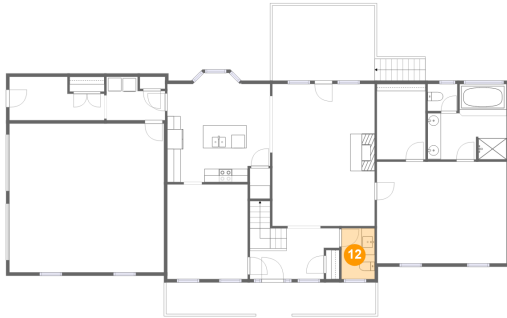
Dimensions: 31'6" x 4'9"
Area: 150 sq. ft
Counted as living area: No

Heated: No
Finished: Yes
Enclosed: No
Contiguous: Yes
Permitted: Yes
Wet space: No
Addition: No
Conversion: No

Home report

135 Deep Woods Circle, Shepherdstown, Jefferson County,
West Virginia, United States, 25443

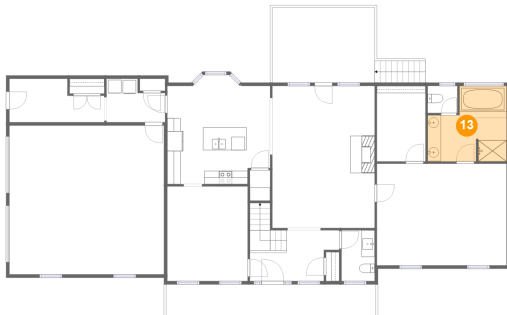
12 Floor 1 - WC



Dimensions: 5'0" x 7'8"
Area: 38 sq. ft
Counted as living area: Yes

Heated: Yes
Finished: Yes
Enclosed: Yes
Contiguous: Yes
Permitted: Yes
Wet space: Yes
Addition: No
Conversion: No

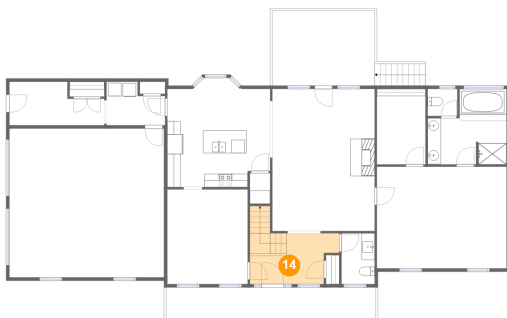
13 Floor 1 - Primary Bath



Dimensions: 11'10" x 11'4"
Area: 113 sq. ft
Counted as living area: Yes

Heated: Yes
Finished: Yes
Enclosed: Yes
Contiguous: Yes
Permitted: Yes
Wet space: Yes
Addition: No
Conversion: No

14 Floor 1 - Foyer



Dimensions: 11'2" x 7'8"
Area: 104 sq. ft
Counted as living area: Yes

Heated: Yes
Finished: Yes
Enclosed: Yes
Contiguous: Yes
Permitted: Yes
Wet space: No
Addition: No
Conversion: No

Home report

135 Deep Woods Circle, Shepherdstown, Jefferson County,
West Virginia, United States, 25443

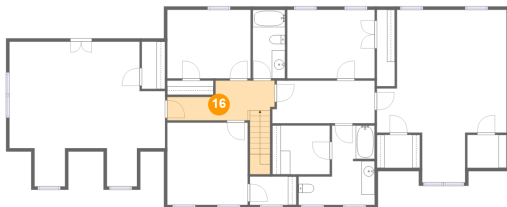
15 Floor 2 - W.I.C.



Dimensions: 7'0" x 4'3"
Area: 30 sq. ft
Counted as living area: Yes

Heated: Yes
Finished: Yes
Enclosed: Yes
Contiguous: Yes
Permitted: Yes
Wet space: No
Addition: No
Conversion: No

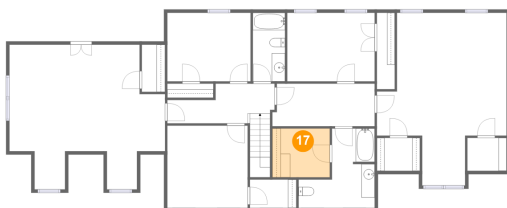
16 Floor 2 - Hall



Dimensions: 16'2" x 6'0"
Area: 102 sq. ft
Counted as living area: Yes

Heated: Yes
Finished: Yes
Enclosed: Yes
Contiguous: Yes
Permitted: Yes
Wet space: No
Addition: No
Conversion: No

17 Floor 2 - W.I.C.



Dimensions: 8'8" x 7'4"
Area: 63 sq. ft
Counted as living area: Yes

Heated: Yes
Finished: Yes
Enclosed: Yes
Contiguous: Yes
Permitted: Yes
Wet space: No
Addition: No
Conversion: No

135 Deep Woods Circle, Shepherdstown, Jefferson County,
West Virginia, United States, 25443

18 Floor 2 - Bath



Dimensions: 4'10" x 10'4"
Area: 50 sq. ft
Counted as living area: Yes

Heated: Yes
Finished: Yes
Enclosed: Yes
Contiguous: Yes
Permitted: Yes
Wet space: Yes
Addition: No
Conversion: No

19 Floor 2 - Bedroom



Dimensions: 19'6" x 25'11"
Area: 373 sq. ft
Counted as living area: Yes

Heated: Yes
Finished: Yes
Enclosed: Yes
Contiguous: Yes
Permitted: Yes
Wet space: No
Addition: No
Conversion: No

20 Floor 2 - Bedroom



Dimensions: 13'1" x 10'4"
Area: 136 sq. ft
Counted as living area: Yes

Heated: Yes
Finished: Yes
Enclosed: Yes
Contiguous: Yes
Permitted: Yes
Wet space: No
Addition: No
Conversion: No

135 Deep Woods Circle, Shepherdstown, Jefferson County,
West Virginia, United States, 25443

21 Floor 2 - Bedroom



Dimensions: 23'5" x 21'9"
Area: 392 sq. ft
Counted as living area: Yes

Heated: Yes
Finished: Yes
Enclosed: Yes
Contiguous: Yes
Permitted: Yes
Wet space: No
Addition: No
Conversion: No

22 Floor 2 - Bedroom



Dimensions: 12'0" x 12'5"
Area: 150 sq. ft
Counted as living area: Yes

Heated: Yes
Finished: Yes
Enclosed: Yes
Contiguous: Yes
Permitted: Yes
Wet space: No
Addition: No
Conversion: No

23 Floor 2 - Bedroom

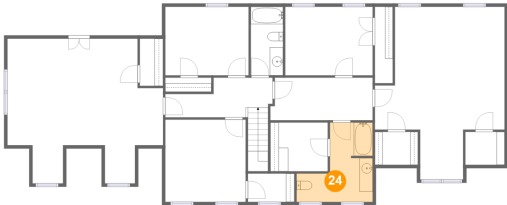


Dimensions: 12'6" x 10'4"
Area: 129 sq. ft
Counted as living area: Yes

Heated: Yes
Finished: Yes
Enclosed: Yes
Contiguous: Yes
Permitted: Yes
Wet space: No
Addition: No
Conversion: No

135 Deep Woods Circle, Shepherdstown, Jefferson County,
West Virginia, United States, 25443

24 Floor 2 - Bath



Dimensions: 11'5" x 11'11"
Area: 97 sq. ft
Counted as living area: Yes

Heated: Yes
Finished: Yes
Enclosed: Yes
Contiguous: Yes
Permitted: Yes
Wet space: Yes
Addition: No
Conversion: No

25 Floor 2 - Hall



Dimensions: 15'4" x 6'5"
Area: 96 sq. ft
Counted as living area: Yes

Heated: Yes
Finished: Yes
Enclosed: Yes
Contiguous: Yes
Permitted: Yes
Wet space: No
Addition: No
Conversion: No