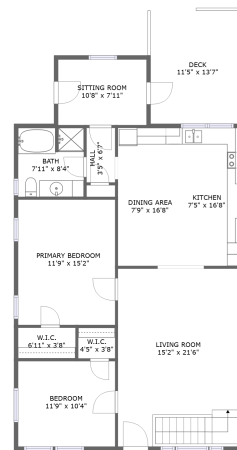
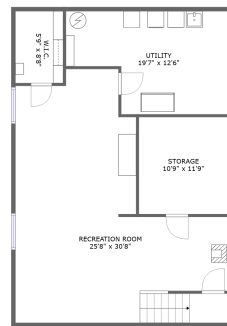
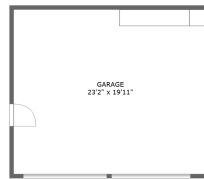



1191 Heritage Line, Keene, ON, CA



Property summary


 **1** Garages

 **2** Bedrooms

 **1** Bathrooms

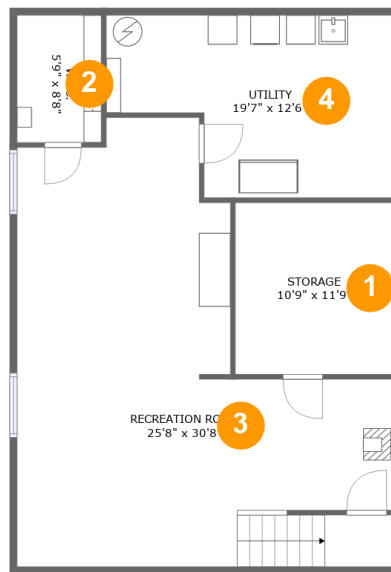
 **0** Half baths

 **2** Floors

 **1,114**
Gross living
area sqft

 **3,170**
Total sqft

1191 Heritage Line, Keene, ON, CA



Room dimensions

Floor 1

Total sqft: 1032

Living area: 0

#		Dimensions	sqft	Counted as living area
1	Storage	10'9" x 11'9"	126 sq. ft	No
2	Cl	5'9" x 8'8"	50 sq. ft	No
3	Recreation Room	25'8" x 30'8"	562 sq. ft	No
4	Utility	19'7" x 12'6"	205 sq. ft	No

1191 Heritage Line, Keene, ON, CA**Room dimensions**

Floor 2

Total sqft: 2138 Living area: 1114

#		Dimensions	sqft	Counted as living area
5	Bedroom	11'9" x 10'4"	121 sq. ft	Yes
6	Hall	3'5" x 6'7"	23 sq. ft	Yes
7	Living Room	10'8" x 7'11"	85 sq. ft	No
8	Dining Room	7'9" x 16'8"	130 sq. ft	Yes
9	Kitchen	7'5" x 16'8"	124 sq. ft	Yes
10	Cl	4'5" x 3'8"	17 sq. ft	Yes
11	Living Room	15'2" x 21'6"	327 sq. ft	Yes
12	Outdoor	11'5" x 13'7"	156 sq. ft	No
13	Bath	7'11" x 8'4"	65 sq. ft	Yes
14	Cl	6'11" x 3'8"	26 sq. ft	Yes
15	Outdoor	28'3" x 9'4"	265 sq. ft	No

Scan captured on Sat, 23 Nov 2024 20:44:51 GMT

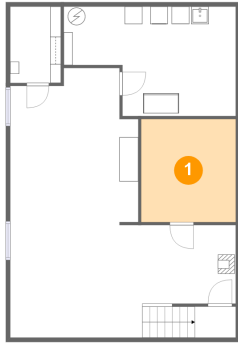
Information is calculated by Cubicasa technology deemed highly reliable but not guaranteed.

1191 Heritage Line,Keene,ON,CA

#		Dimensions	sqft	Counted as living area
16	Bedroom	11'9" x 15'2"	178 sq. ft	Yes
17	Garage	23'2" x 19'11"	461 sq. ft	No

1191 Heritage Line, Keene, ON, CA

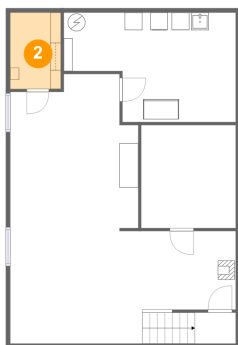
1 Floor 1 - Storage



Dimensions: 10'9" x 11'9"
Area: 126 sq. ft
Counted as living area: No

Heated: No
Finished: No
Enclosed: No
Contiguous: Yes
Permitted: Yes
Wet space: No
Addition: No
Conversion: No

2 Floor 1 - Cl

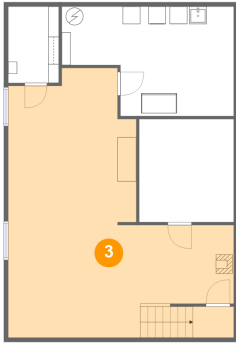


Dimensions: 5'9" x 8'8"
Area: 50 sq. ft
Counted as living area: No

Heated: Yes
Finished: Yes
Enclosed: Yes
Contiguous: No
Permitted: Yes
Wet space: No
Addition: No
Conversion: No

1191 Heritage Line, Keene, ON, CA

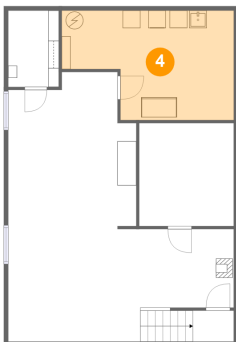
3 Floor 1 - Recreation Room



Dimensions: 25'8" x 30'8"
Area: 562 sq. ft
Counted as living area: No

Heated: Yes
Finished: Yes
Enclosed: Yes
Contiguous: No
Permitted: Yes
Wet space: No
Addition: No
Conversion: No

4 Floor 1 - Utility



Dimensions: 19'7" x 12'6"
Area: 205 sq. ft
Counted as living area: No

Heated: Yes
Finished: No
Enclosed: Yes
Contiguous: Yes
Permitted: Yes
Wet space: No
Addition: No
Conversion: No

5 Floor 2 - Bedroom



Dimensions: 11'9" x 10'4"
Area: 121 sq. ft
Counted as living area: Yes

Heated: Yes
Finished: Yes
Enclosed: Yes
Contiguous: Yes
Permitted: Yes
Wet space: No
Addition: No
Conversion: No

1191 Heritage Line, Keene, ON, CA**6 Floor 2 - Hall**

Dimensions: 3'5" x 6'7"
Area: 23 sq. ft
Counted as living area: Yes

Heated: Yes
Finished: Yes
Enclosed: Yes
Contiguous: Yes
Permitted: Yes
Wet space: No
Addition: No
Conversion: No

7 Floor 2 - Living Room

Dimensions: 10'8" x 7'11"
Area: 85 sq. ft
Counted as living area: No

Heated: Yes
Finished: Yes
Enclosed: Yes
Contiguous: Yes
Permitted: Yes
Wet space: No
Addition: No
Conversion: No

8 Floor 2 - Dining Room

Dimensions: 7'9" x 16'8"
Area: 130 sq. ft
Counted as living area: Yes

Heated: Yes
Finished: Yes
Enclosed: Yes
Contiguous: Yes
Permitted: Yes
Wet space: No
Addition: No
Conversion: No

1191 Heritage Line, Keene, ON, CA**9 Floor 2 - Kitchen**

Dimensions: 7'5" x 16'8"
Area: 124 sq. ft
Counted as living area: Yes

Heated: Yes
Finished: Yes
Enclosed: Yes
Contiguous: Yes
Permitted: Yes
Wet space: No
Addition: No
Conversion: No

10 Floor 2 - Cl

Dimensions: 4'5" x 3'8"
Area: 17 sq. ft
Counted as living area: Yes

Heated: Yes
Finished: Yes
Enclosed: Yes
Contiguous: Yes
Permitted: Yes
Wet space: No
Addition: No
Conversion: No

11 Floor 2 - Living Room

Dimensions: 15'2" x 21'6"
Area: 327 sq. ft
Counted as living area: Yes

Heated: Yes
Finished: Yes
Enclosed: Yes
Contiguous: Yes
Permitted: Yes
Wet space: No
Addition: No
Conversion: No

1191 Heritage Line, Keene, ON, CA**12 Floor 2 - Outdoor**

Dimensions: 11'5" x 13'7"
Area: 156 sq. ft
Counted as living area: No

Heated: No
Finished: Yes
Enclosed: No
Contiguous: Yes
Permitted: Yes
Wet space: No
Addition: No
Conversion: No

13 Floor 2 - Bath

Dimensions: 7'11" x 8'4"
Area: 65 sq. ft
Counted as living area: Yes

Heated: Yes
Finished: Yes
Enclosed: Yes
Contiguous: Yes
Permitted: Yes
Wet space: Yes
Addition: No
Conversion: No

14 Floor 2 - Cl

Dimensions: 6'11" x 3'8"
Area: 26 sq. ft
Counted as living area: Yes

Heated: Yes
Finished: Yes
Enclosed: Yes
Contiguous: Yes
Permitted: Yes
Wet space: No
Addition: No
Conversion: No

1191 Heritage Line, Keene, ON, CA**15 Floor 2 - Outdoor**

Dimensions: 28'3" x 9'4"
Area: 265 sq. ft
Counted as living area: No

Heated: No
Finished: Yes
Enclosed: No
Contiguous: Yes
Permitted: Yes
Wet space: No
Addition: No
Conversion: No

16 Floor 2 - Bedroom

Dimensions: 11'9" x 15'2"
Area: 178 sq. ft
Counted as living area: Yes

Heated: Yes
Finished: Yes
Enclosed: Yes
Contiguous: Yes
Permitted: Yes
Wet space: No
Addition: No
Conversion: No

17 Floor 2 - Garage

Dimensions: 23'2" x 19'11"
Area: 461 sq. ft
Counted as living area: No

Heated: No
Finished: No
Enclosed: Yes
Contiguous: Yes
Permitted: Yes
Wet space: No
Addition: No
Conversion: No