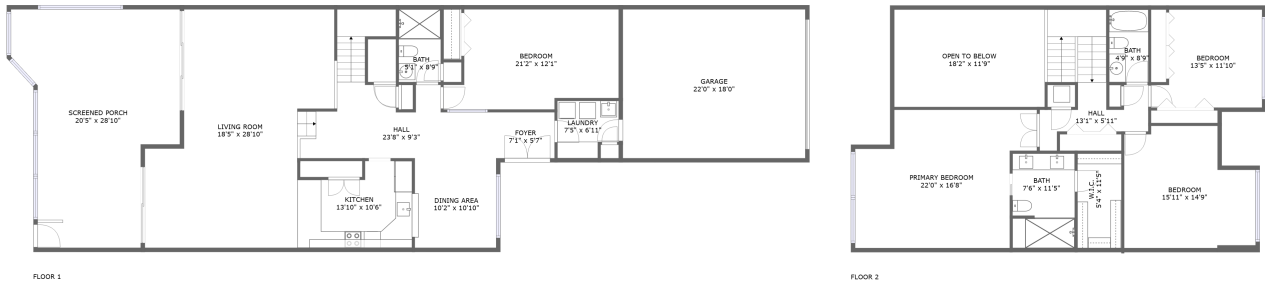


4205 Fairway Run, Carrollwood, Tampa, Hillsborough County, Florida, United States,



Property Summary



2 floors



4 bedrooms



3 bathrooms



3,763 total sqft

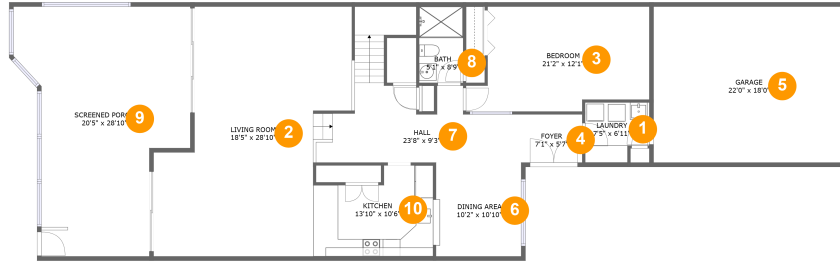


1 garages



2,290 Gross Living Area sqft

4205 Fairway Run, Carrollwood, Tampa, Hillsborough County, Florida, United States,



Room Dimensions

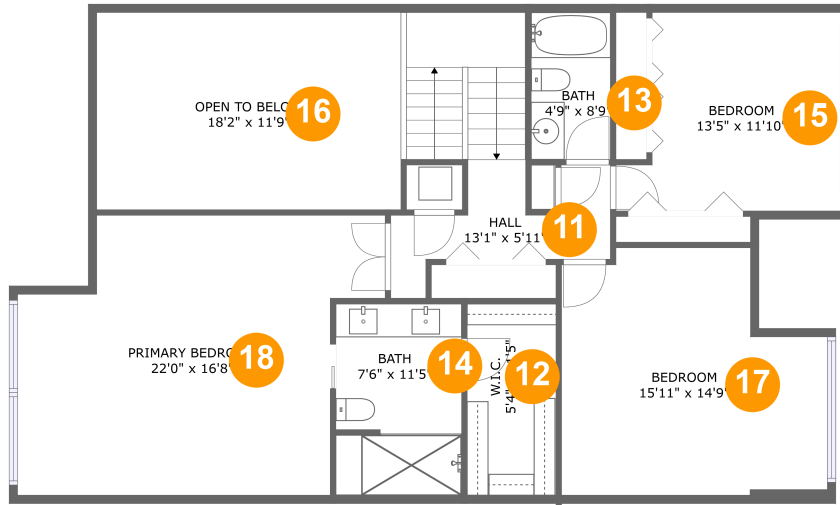
Floor 1

Total sqft: 2402

Living area: 1485

#	Room name	Dimensions	Area (sqft)	Counted as Living Area
1	Laundry	7'5" x 6'11"	46 sq. ft	Yes
2	Living Room	18'5" x 28'10"	505 sq. ft	Yes
3	Bedroom	21'2" x 12'1"	223 sq. ft	Yes
4	Foyer	7'1" x 5'7"	39 sq. ft	Yes
5	Garage	22'0" x 18'0"	396 sq. ft	No
6	Dining Area	10'2" x 10'10"	108 sq. ft	Yes
7	Hall	23'8" x 9'3"	212 sq. ft	Yes
8	Bath	5'1" x 8'9"	45 sq. ft	Yes
9	Screened Porch	20'5" x 28'10"	460 sq. ft	No
10	Kitchen	13'10" x 10'6"	127 sq. ft	Yes

4205 Fairway Run, Carrollwood, Tampa, Hillsborough County, Florida, United States,



Room Dimensions

Floor 2

Total sqft: 1361

Living area: 805

#	Room name	Dimensions	Area (sqft)	Counted as Living Area
11	Hall	13'1" x 5'11"	125 sq. ft	Yes
12	W.i.c.	5'4" x 11'5"	61 sq. ft	Yes
13	Bath	4'9" x 8'9"	41 sq. ft	Yes
14	Bath	7'6" x 11'5"	85 sq. ft	Yes
15	Bedroom	13'5" x 11'10"	139 sq. ft	Yes
16	Open To Below	18'2" x 11'9"	214 sq. ft	No
17	Bedroom	15'11" x 14'9"	205 sq. ft	Yes
18	Primary Bedroom	22'0" x 16'8"	306 sq. ft	No

4205 Fairway Run, Carrollwood, Tampa, Hillsborough County, Florida, United States,

1 Floor 1 - Laundry



Dimensions: 7'5" x 6'11"
Area: 46 sq. ft
Counted as Living Area:
Yes

Heated: Yes
Finished: Yes
Enclosed: Yes
Contiguous:
Yes
Permitted: Yes
Wet Space: No
Addition: No
Conversion: No

2 Floor 1 - Living Room



Dimensions: 18'5" x 28'10"
Area: 505 sq. ft
Counted as Living Area:
Yes

Heated: Yes
Finished: Yes
Enclosed: Yes
Contiguous:
Yes
Permitted: Yes
Wet Space: No
Addition: No
Conversion: No

4205 Fairway Run, Carrollwood, Tampa, Hillsborough County, Florida, United States,

3 Floor 1 - Bedroom



Dimensions: 21'2" x 12'1"
Area: 223 sq. ft
Counted as Living Area:
Yes

Heated: Yes
Finished: Yes
Enclosed: Yes
Contiguous:
Yes
Permitted: Yes
Wet Space: No
Addition: No
Conversion: No

4 Floor 1 - Foyer



Dimensions: 7'1" x 5'7"
Area: 39 sq. ft
Counted as Living Area:
Yes

Heated: Yes
Finished: Yes
Enclosed: Yes
Contiguous:
Yes
Permitted: Yes
Wet Space: No
Addition: No
Conversion: No

5 Floor 1 - Garage



Dimensions: 22'0" x 18'0"
Area: 396 sq. ft
Counted as Living Area: No

Heated: No
Finished: No
Enclosed: Yes
Contiguous: Yes
Permitted: Yes
Wet Space: No
Addition: No
Conversion: No

4205 Fairway Run, Carrollwood, Tampa, Hillsborough County, Florida, United States,

6 Floor 1 - Dining Area



Dimensions: 10'2" x 10'10"
Area: 108 sq. ft
Counted as Living Area:
Yes

Heated: Yes
Finished: Yes
Enclosed: Yes
Contiguous:
Yes
Permitted: Yes
Wet Space: No
Addition: No
Conversion: No

7 Floor 1 - Hall



Dimensions: 23'8" x 9'3"
Area: 212 sq. ft
Counted as Living Area:
Yes

Heated: Yes
Finished: Yes
Enclosed: Yes
Contiguous:
Yes
Permitted: Yes
Wet Space: No
Addition: No
Conversion: No

8 Floor 1 - Bath



Dimensions: 5'1" x 8'9"
Area: 45 sq. ft
Counted as Living Area:
Yes

Heated: Yes
Finished: Yes
Enclosed: Yes
Contiguous:
Yes
Permitted: Yes
Wet Space: Yes
Addition: No
Conversion: No

4205 Fairway Run, Carrollwood, Tampa, Hillsborough County, Florida, United States,

9 Floor 1 - Screened Porch



Dimensions: 20'5" x 28'10"
Area: 460 sq. ft
Counted as Living Area: No

Heated: No
Finished: Yes
Enclosed: No
Contiguous: Yes
Permitted: Yes
Wet Space: No
Addition: No
Conversion: No

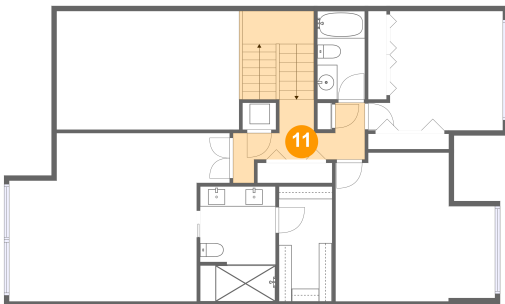
10 Floor 1 - Kitchen



Dimensions: 13'10" x 10'6"
Area: 127 sq. ft
Counted as Living Area:
Yes

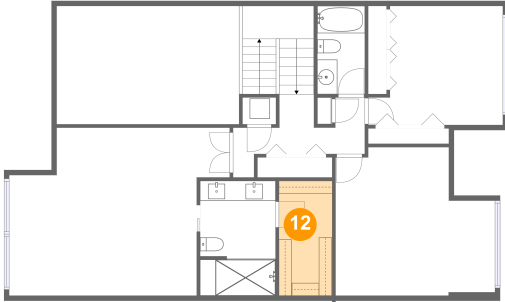
Heated: Yes
Finished: Yes
Enclosed: Yes
Contiguous:
Yes
Permitted: Yes
Wet Space: No
Addition: No
Conversion: No

11 Floor 2 - Hall



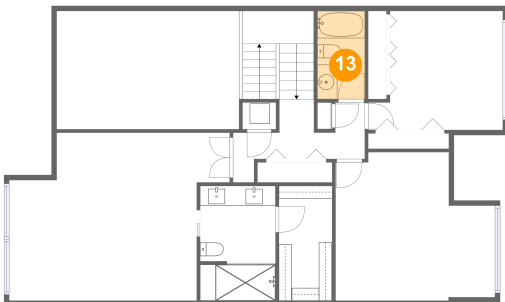
Dimensions: 13'1" x 5'11"
Area: 125 sq. ft
Counted as Living Area:
Yes

Heated: Yes
Finished: Yes
Enclosed: Yes
Contiguous:
Yes
Permitted: Yes
Wet Space: No
Addition: No
Conversion: No

**4205 Fairway Run, Carrollwood, Tampa,
Hillsborough County, Florida, United States,****12 Floor 2 - W.i.c.**

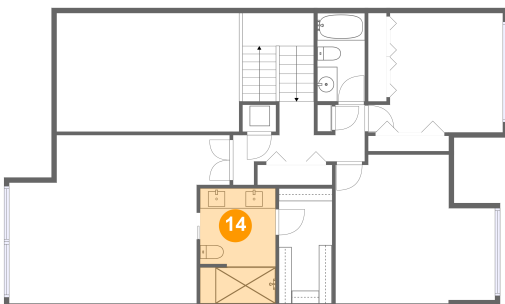
Dimensions: 5'4" x 11'5"
Area: 61 sq. ft
Counted as Living Area:
Yes

Heated: Yes
Finished: Yes
Enclosed: Yes
Contiguous:
Yes
Permitted: Yes
Wet Space: No
Addition: No
Conversion: No

13 Floor 2 - Bath

Dimensions: 4'9" x 8'9"
Area: 41 sq. ft
Counted as Living Area:
Yes

Heated: Yes
Finished: Yes
Enclosed: Yes
Contiguous:
Yes
Permitted: Yes
Wet Space: Yes
Addition: No
Conversion: No

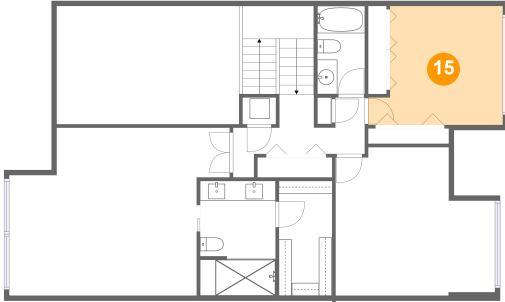
14 Floor 2 - Bath

Dimensions: 7'6" x 11'5"
Area: 85 sq. ft
Counted as Living Area:
Yes

Heated: Yes
Finished: Yes
Enclosed: Yes
Contiguous:
Yes
Permitted: Yes
Wet Space: Yes
Addition: No
Conversion: No

4205 Fairway Run, Carrollwood, Tampa, Hillsborough County, Florida, United States,

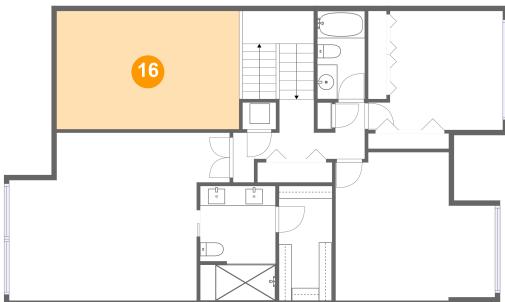
15 Floor 2 - Bedroom



Dimensions: 13'5" x 11'10"
Area: 139 sq. ft
Counted as Living Area:
Yes

Heated: Yes
Finished: Yes
Enclosed: Yes
Contiguous:
Yes
Permitted: Yes
Wet Space: No
Addition: No
Conversion: No

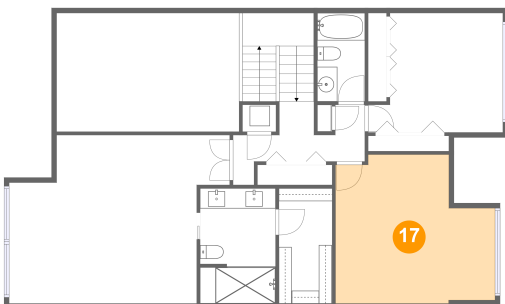
16 Floor 2 - Open To Below



Dimensions: 18'2" x 11'9"
Area: 214 sq. ft
Counted as Living Area: No

Heated: No
Finished: No
Enclosed: No
Contiguous: Yes
Permitted: No
Wet Space: No
Addition: No
Conversion: No

17 Floor 2 - Bedroom

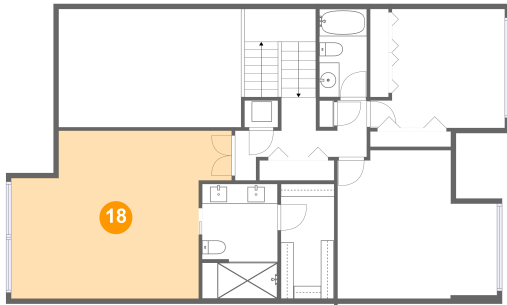


Dimensions: 15'11" x 14'9"
Area: 205 sq. ft
Counted as Living Area:
Yes

Heated: Yes
Finished: Yes
Enclosed: Yes
Contiguous:
Yes
Permitted: Yes
Wet Space: No
Addition: No
Conversion: No

**4205 Fairway Run, Carrollwood, Tampa,
Hillsborough County, Florida, United States,**

18 Floor 2 - Primary Bedroom



Dimensions: 22'0" x 16'8"
Area: 306 sq. ft
Counted as Living Area: No

Heated: Yes
Finished: Yes
Enclosed: Yes
Contiguous: Yes
Permitted: Yes
Wet Space: No
Addition: No
Conversion: No