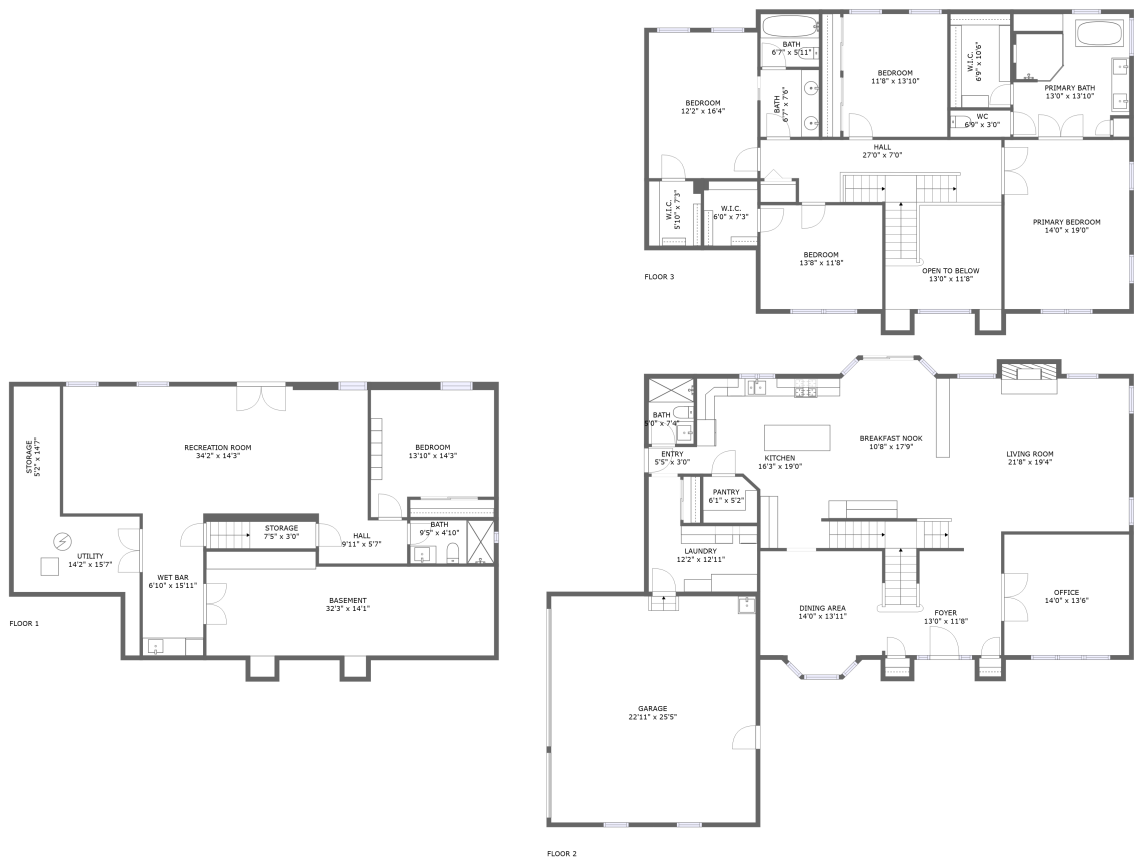


Home report

8203 Gage Lane, Cary, McHenry County, Illinois, United States, 60013



Total Area: 4118 sq. ft
Below Ground: 939 sq. ft, Floor 2: 1633 sq. ft, Floor 3: 1546 sq. ft
Excluded: Basement 360 sq. ft, Storage 113 sq. ft, Utility 131 sq. ft, Garage 583 sq. ft, Fireplace 12 sq. ft, Opentobelow 138 sq. ft, Walls: 316 sq. ft

Property summary

**3**
Floors

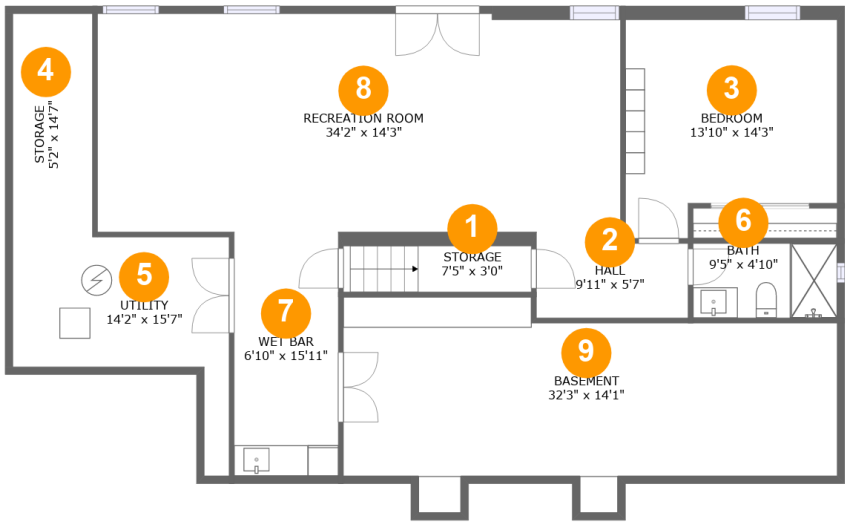
**5**
Bedrooms

**4**
Bathrooms

**1**
Garages

Home report

8203 Gage Lane, Cary, McHenry County, Illinois, United States, 60013



Room dimensions

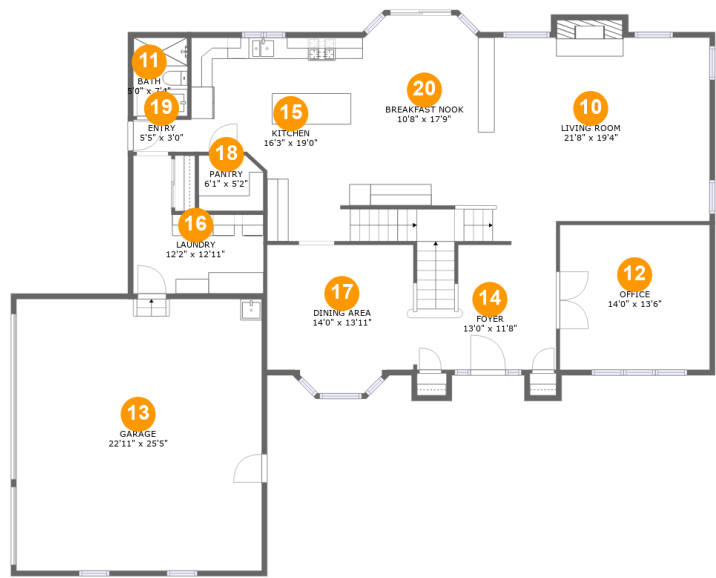
Floor 1 Below ground

Total:939sqft Excluded: 604sqft

#		Max Dimensions	sqft	Included
1	Storage	7'5" x 3'0"	37 sq. ft	No
2	Hall	9'11" x 5'7"	52 sq. ft	Yes
3	Bedroom	13'10" x 14'3"	175 sq. ft	Yes
4	Storage	5'2" x 14'7"	76 sq. ft	No
5	Utility	14'2" x 15'7"	131 sq. ft	No
6	Bath	9'5" x 4'10"	46 sq. ft	Yes
7	Wet Bar	6'10" x 15'11"	108 sq. ft	Yes
8	Recreation Room	34'2" x 14'3"	484 sq. ft	Yes
9	Basement	32'3" x 14'1"	356 sq. ft	No

Home report

8203 Gage Lane, Cary, McHenry County, Illinois, United States, 60013



Room dimensions

Floor 2

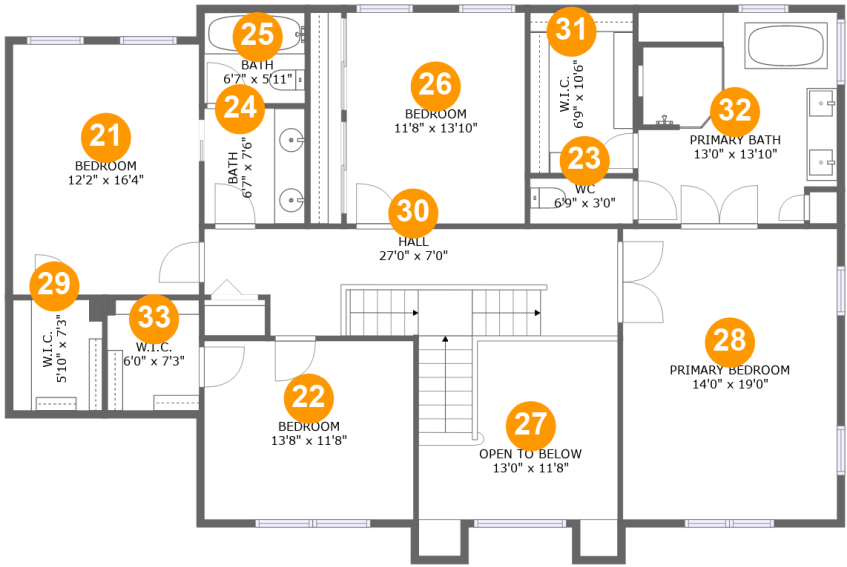
Total:1633sqft

Excluded: 595sqft

#		Max Dimensions	sqft	Included
10	Living Room	21'8" x 19'4"	398 sq. ft	Yes
11	Bath	5'0" x 7'4"	37 sq. ft	Yes
12	Office	14'0" x 13'6"	190 sq. ft	Yes
13	Garage	22'11" x 25'5"	583 sq. ft	No
14	Foyer	13'0" x 11'8"	152 sq. ft	Yes
15	Kitchen	16'3" x 19'0"	251 sq. ft	Yes
16	Laundry	12'2" x 12'11"	110 sq. ft	Yes
17	Dining Area	14'0" x 13'11"	177 sq. ft	Yes
18	Pantry	6'1" x 5'2"	30 sq. ft	Yes
19	Entry	5'5" x 3'0"	16 sq. ft	Yes
20	Breakfast Nook	10'8" x 17'9"	222 sq. ft	Yes

Home report

8203 Gage Lane, Cary, McHenry County, Illinois, United States, 60013



Room dimensions

Floor 3 Total:1546sqft Excluded: 138sqft

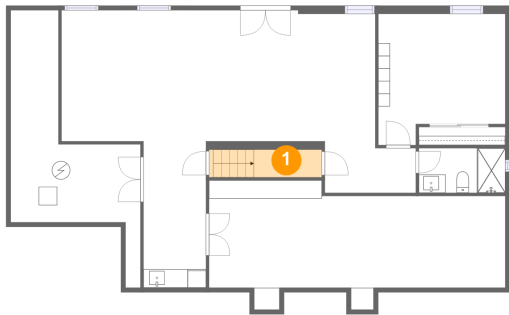
#		Max Dimensions	sqft	Included
21	Bedroom	12'2" x 16'4"	199 sq. ft	Yes
22	Bedroom	13'8" x 11'8"	160 sq. ft	Yes
23	WC	6'9" x 3'0"	20 sq. ft	Yes
24	Bath	6'7" x 7'6"	50 sq. ft	Yes
25	Bath	6'7" x 5'11"	39 sq. ft	Yes
26	Bedroom	11'8" x 13'10"	161 sq. ft	Yes
27	Open To Below	13'0" x 11'8"	138 sq. ft	No
28	Primary Bedroom	14'0" x 19'0"	266 sq. ft	Yes
29	W.I.C.	5'10" x 7'3"	42 sq. ft	Yes
30	Hall	27'0" x 7'0"	208 sq. ft	Yes
31	W.I.C.	6'9" x 10'6"	71 sq. ft	Yes

Home report

8203 Gage Lane, Cary, McHenry County, Illinois, United States,
60013

#		Max Dimensions	sqft	Included
32	Primary Bath	13'0" x 13'10"	172 sq. ft	Yes
33	W.I.C.	6'0" x 7'3"	43 sq. ft	Yes

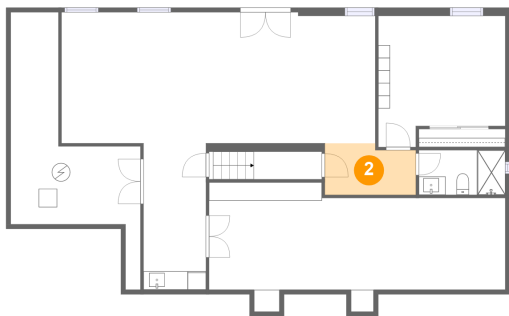
1 Floor 1 - Storage



Max Dimensions: 7'5" x 3'0"
Calculated Area: 37 sq. ft
Included: No

Heated: No
Finished: No
Enclosed: No
Contiguous: Yes
Permitted: Yes
Wet space: No
Addition: No
Conversion: No

2 Floor 1 - Hall



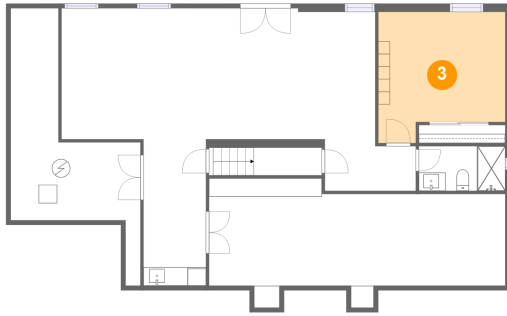
Max Dimensions: 9'11" x 5'7"
Calculated Area: 52 sq. ft
Included: Yes

Heated: Yes
Finished: Yes
Enclosed: Yes
Contiguous: Yes
Permitted: Yes
Wet space: No
Addition: No
Conversion: No

Home report

8203 Gage Lane, Cary, McHenry County, Illinois, United States, 60013

3 Floor 1 - Bedroom



Max Dimensions: 13'10" x 14'3"
Calculated Area: 175 sq. ft
Included: Yes

Heated: Yes
Finished: Yes
Enclosed: Yes
Contiguous: Yes
Permitted: Yes
Wet space: No
Addition: No
Conversion: No

4 Floor 1 - Storage



Max Dimensions: 5'2" x 14'7"
Calculated Area: 76 sq. ft
Included: No

Heated: No
Finished: No
Enclosed: No
Contiguous: Yes
Permitted: Yes
Wet space: No
Addition: No
Conversion: No

5 Floor 1 - Utility



Max Dimensions: 14'2" x 15'7"
Calculated Area: 131 sq. ft
Included: No

Heated: Yes
Finished: No
Enclosed: Yes
Contiguous: Yes
Permitted: Yes
Wet space: No
Addition: No
Conversion: No

8203 Gage Lane, Cary, McHenry County, Illinois, United States,
60013

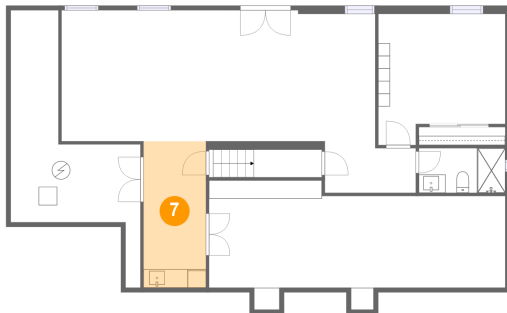
6 Floor 1 - Bath



Max Dimensions: 9'5" x 4'10"
Calculated Area: 46 sq. ft
Included: Yes

Heated: Yes
Finished: Yes
Enclosed: Yes
Contiguous: Yes
Permitted: Yes
Wet space: Yes
Addition: No
Conversion: No

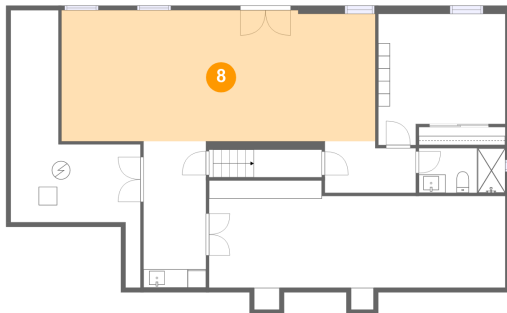
7 Floor 1 - Wet Bar



Max Dimensions: 6'10" x 15'11"
Calculated Area: 108 sq. ft
Included: Yes

Heated: Yes
Finished: Yes
Enclosed: Yes
Contiguous: Yes
Permitted: Yes
Wet space: No
Addition: No
Conversion: No

8 Floor 1 - Recreation Room



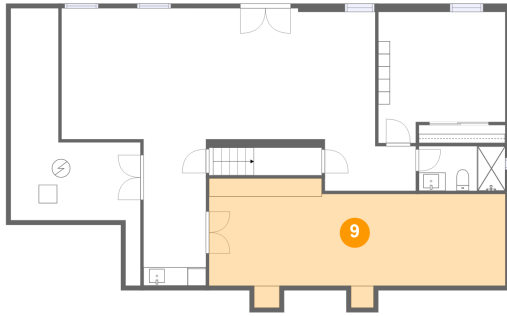
Max Dimensions: 34'2" x 14'3"
Calculated Area: 484 sq. ft
Included: Yes

Heated: Yes
Finished: Yes
Enclosed: Yes
Contiguous: Yes
Permitted: Yes
Wet space: No
Addition: No
Conversion: No

Home report

8203 Gage Lane, Cary, McHenry County, Illinois, United States, 60013

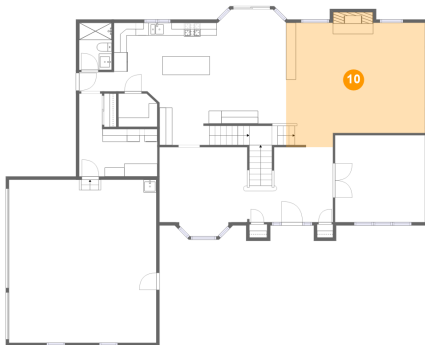
9 Floor 1 - Basement



Max Dimensions: 32'3" x 14'1"
Calculated Area: 356 sq. ft
Included: No

Heated: Yes
Finished: No
Enclosed: Yes
Contiguous: Yes
Permitted: Yes
Wet space: No
Addition: No
Conversion: No

10 Floor 2 - Living Room



Max Dimensions: 21'8" x 19'4"
Calculated Area: 398 sq. ft
Included: Yes

Heated: Yes
Finished: Yes
Enclosed: Yes
Contiguous: Yes
Permitted: Yes
Wet space: No
Addition: No
Conversion: No

11 Floor 2 - Bath



Max Dimensions: 5'0" x 7'4"
Calculated Area: 37 sq. ft
Included: Yes

Heated: Yes
Finished: Yes
Enclosed: Yes
Contiguous: Yes
Permitted: Yes
Wet space: Yes
Addition: No
Conversion: No

8203 Gage Lane, Cary, McHenry County, Illinois, United States,
60013

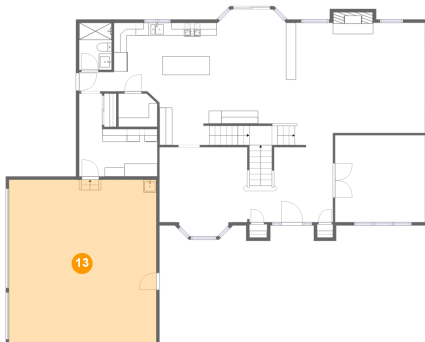
12 Floor 2 - Office



Max Dimensions: 14'0" x 13'6"
Calculated Area: 190 sq. ft
Included: Yes

Heated: Yes
Finished: Yes
Enclosed: Yes
Contiguous: Yes
Permitted: Yes
Wet space: No
Addition: No
Conversion: No

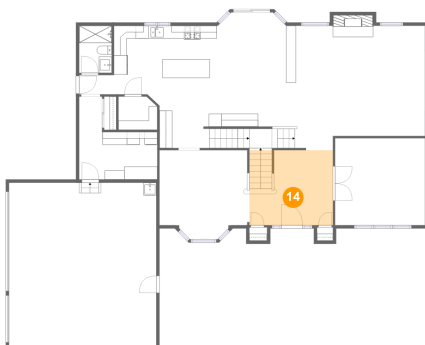
13 Floor 2 - Garage



Max Dimensions: 22'11" x 25'5"
Calculated Area: 583 sq. ft
Included: No

Heated: No
Finished: No
Enclosed: Yes
Contiguous: Yes
Permitted: Yes
Wet space: No
Addition: No
Conversion: No

14 Floor 2 - Foyer



Max Dimensions: 13'0" x 11'8"
Calculated Area: 152 sq. ft
Included: Yes

Heated: Yes
Finished: Yes
Enclosed: Yes
Contiguous: Yes
Permitted: Yes
Wet space: No
Addition: No
Conversion: No

8203 Gage Lane, Cary, McHenry County, Illinois, United States,
60013

15 Floor 2 - Kitchen



Max Dimensions: 16'3" x 19'0"
Calculated Area: 251 sq. ft
Included: Yes

Heated: Yes
Finished: Yes
Enclosed: Yes
Contiguous: Yes
Permitted: Yes
Wet space: No
Addition: No
Conversion: No

16 Floor 2 - Laundry



Max Dimensions: 12'2" x 12'11"
Calculated Area: 110 sq. ft
Included: Yes

Heated: Yes
Finished: Yes
Enclosed: Yes
Contiguous: Yes
Permitted: Yes
Wet space: No
Addition: No
Conversion: No

17 Floor 2 - Dining Area



Max Dimensions: 14'0" x 13'11"
Calculated Area: 177 sq. ft
Included: Yes

Heated: Yes
Finished: Yes
Enclosed: Yes
Contiguous: Yes
Permitted: Yes
Wet space: No
Addition: No
Conversion: No

8203 Gage Lane, Cary, McHenry County, Illinois, United States,
60013

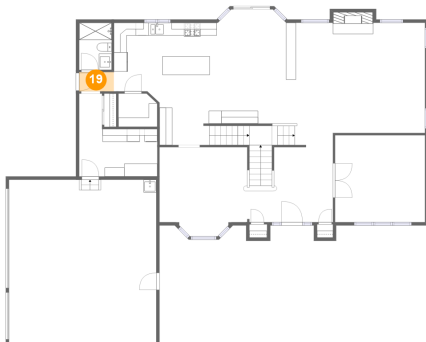
18 Floor 2 - Pantry



Max Dimensions: 6'1" x 5'2"
Calculated Area: 30 sq. ft
Included: Yes

Heated: Yes
Finished: Yes
Enclosed: Yes
Contiguous: Yes
Permitted: Yes
Wet space: No
Addition: No
Conversion: No

19 Floor 2 - Entry



Max Dimensions: 5'5" x 3'0"
Calculated Area: 16 sq. ft
Included: Yes

Heated: Yes
Finished: Yes
Enclosed: Yes
Contiguous: Yes
Permitted: Yes
Wet space: No
Addition: No
Conversion: No

20 Floor 2 - Breakfast Nook

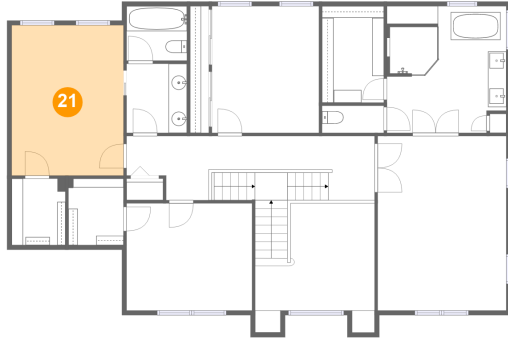


Max Dimensions: 10'8" x
17'9"
Calculated Area: 222 sq. ft
Included: Yes

Heated: Yes
Finished: Yes
Enclosed: Yes
Contiguous:
Yes
Permitted: Yes
Wet space: No
Addition: No
Conversion: No

8203 Gage Lane, Cary, McHenry County, Illinois, United States,
60013

21 Floor 3 - Bedroom



Max Dimensions: 12'2" x 16'4"
Calculated Area: 199 sq. ft
Included: Yes

Heated: Yes
Finished: Yes
Enclosed: Yes
Contiguous: Yes
Permitted: Yes
Wet space: No
Addition: No
Conversion: No

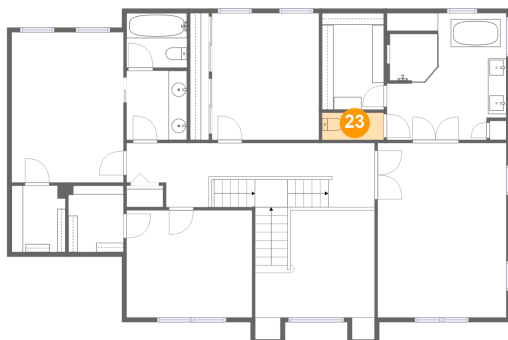
22 Floor 3 - Bedroom



Max Dimensions: 13'8" x 11'8"
Calculated Area: 160 sq. ft
Included: Yes

Heated: Yes
Finished: Yes
Enclosed: Yes
Contiguous: Yes
Permitted: Yes
Wet space: No
Addition: No
Conversion: No

23 Floor 3 - WC

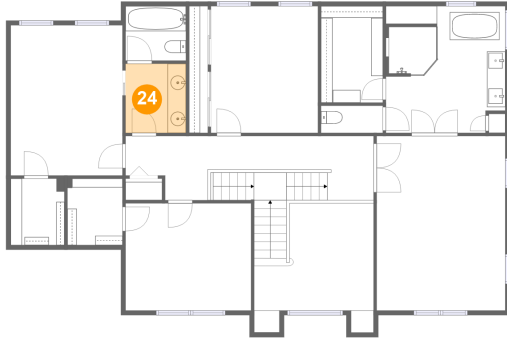


Max Dimensions: 6'9" x 3'0"
Calculated Area: 20 sq. ft
Included: Yes

Heated: Yes
Finished: Yes
Enclosed: Yes
Contiguous: Yes
Permitted: Yes
Wet space: Yes
Addition: No
Conversion: No

8203 Gage Lane, Cary, McHenry County, Illinois, United States,
60013

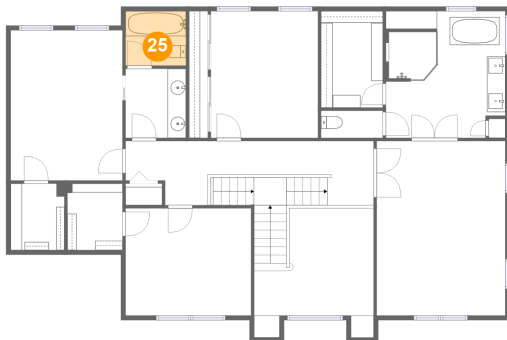
24 Floor 3 - Bath



Max Dimensions: 6'7" x 7'6"
Calculated Area: 50 sq. ft
Included: Yes

Heated: Yes
Finished: Yes
Enclosed: Yes
Contiguous: Yes
Permitted: Yes
Wet space: Yes
Addition: No
Conversion: No

25 Floor 3 - Bath



Max Dimensions: 6'7" x
5'11"
Calculated Area: 39 sq. ft
Included: Yes

Heated: Yes
Finished: Yes
Enclosed: Yes
Contiguous:
Yes
Permitted: Yes
Wet space: Yes
Addition: No
Conversion: No

26 Floor 3 - Bedroom



Max Dimensions: 11'8" x
13'10"
Calculated Area: 161 sq. ft
Included: Yes

Heated: Yes
Finished: Yes
Enclosed: Yes
Contiguous:
Yes
Permitted: Yes
Wet space: No
Addition: No
Conversion: No

8203 Gage Lane, Cary, McHenry County, Illinois, United States,
60013

27 Floor 3 - Open To Below



Max Dimensions: 13'0" x 11'8"
Calculated Area: 138 sq. ft
Included: No

Heated: No
Finished: No
Enclosed: No
Contiguous: Yes
Permitted: No
Wet space: No
Addition: No
Conversion: No

28 Floor 3 - Primary Bedroom



Max Dimensions: 14'0" x 19'0"
Calculated Area: 266 sq. ft
Included: Yes

Heated: Yes
Finished: Yes
Enclosed: Yes
Contiguous: Yes
Permitted: Yes
Wet space: No
Addition: No
Conversion: No

29 Floor 3 - W.I.C.

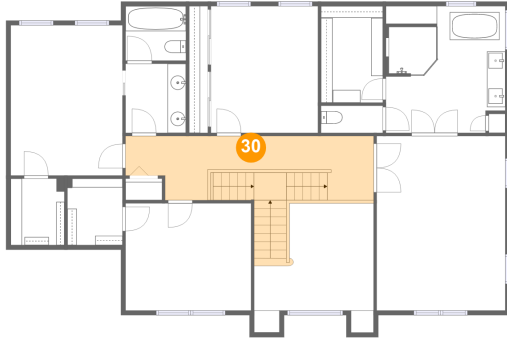


Max Dimensions: 5'10" x 7'3"
Calculated Area: 42 sq. ft
Included: Yes

Heated: Yes
Finished: Yes
Enclosed: Yes
Contiguous: Yes
Permitted: Yes
Wet space: No
Addition: No
Conversion: No

8203 Gage Lane, Cary, McHenry County, Illinois, United States,
60013

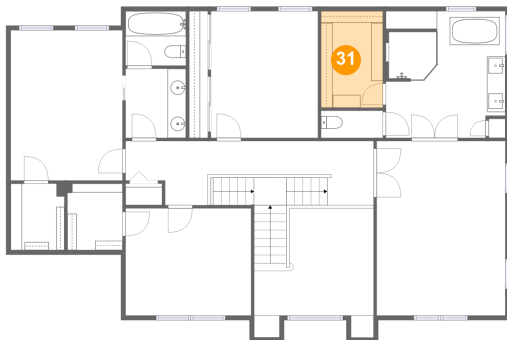
30 Floor 3 - Hall



Max Dimensions: 27'0" x 7'0"
Calculated Area: 208 sq. ft
Included: Yes

Heated: Yes
Finished: Yes
Enclosed: Yes
Contiguous: Yes
Permitted: Yes
Wet space: No
Addition: No
Conversion: No

31 Floor 3 - W.I.C.



Max Dimensions: 6'9" x 10'6"
Calculated Area: 71 sq. ft
Included: Yes

Heated: Yes
Finished: Yes
Enclosed: Yes
Contiguous: Yes
Permitted: Yes
Wet space: No
Addition: No
Conversion: No

32 Floor 3 - Primary Bath



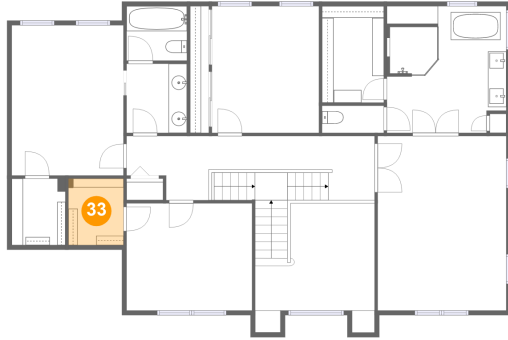
Max Dimensions: 13'0" x 13'10"
Calculated Area: 172 sq. ft
Included: Yes

Heated: Yes
Finished: Yes
Enclosed: Yes
Contiguous: Yes
Permitted: Yes
Wet space: Yes
Addition: No
Conversion: No

Home report

8203 Gage Lane, Cary, McHenry County, Illinois, United States,
60013

33 Floor 3 - W.I.C.



Max Dimensions: 6'0" x 7'3"
Calculated Area: 43 sq. ft
Included: Yes

Heated: Yes
Finished: Yes
Enclosed: Yes
Contiguous: Yes
Permitted: Yes
Wet space: No
Addition: No
Conversion: No