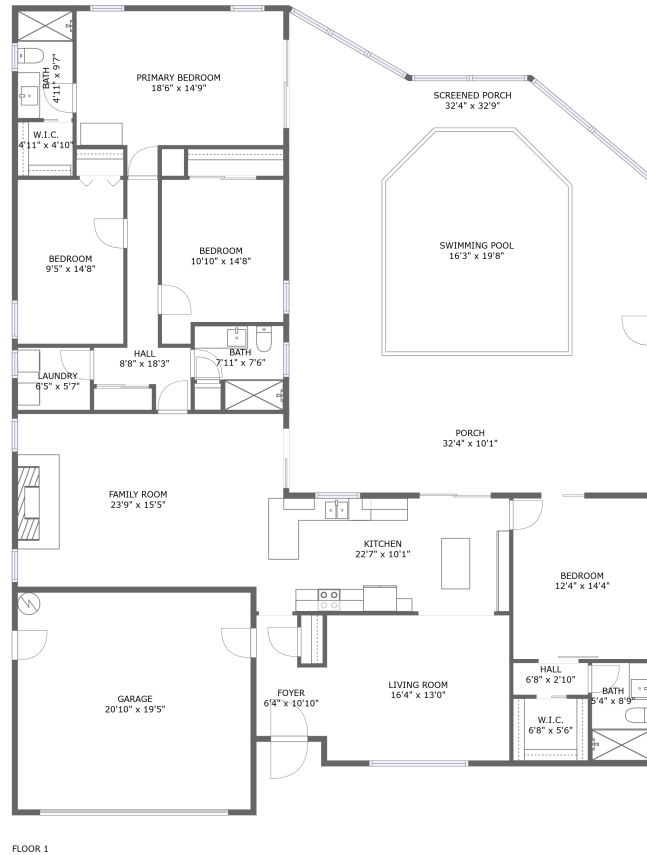




1883 Brae-Moor Drive, Lake Highlander, Dunedin, Pinellas County, Florida, United States, 34698



Property summary

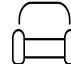
 **1** Garages

 **4** Bedrooms

 **3** Bathrooms

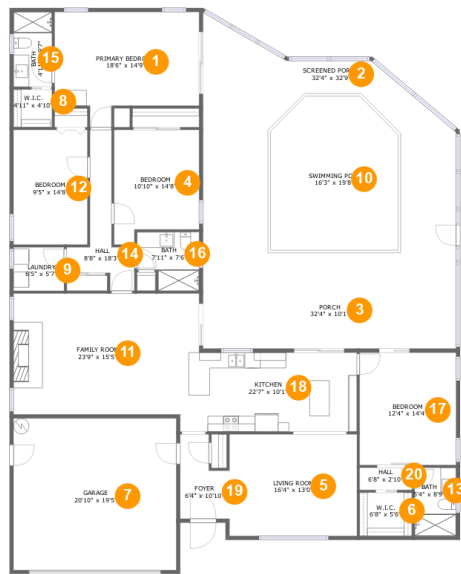
 **0** Half baths

 **1** Floors

 **2,142**
Gross living
area sqft

 **3,470**
Total sqft

1883 Brae-Moor Drive, Lake Highlander, Dunedin, Pinellas County, Florida, United States, 34698



Room dimensions

Floor 1

Total sqft: 3470 Living area: 2142

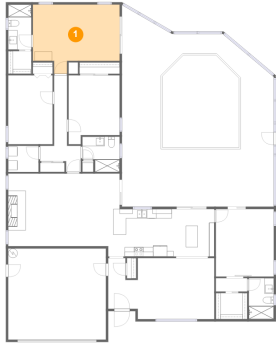
#		Dimensions	sqft	Counted as living area
1	Primary Bedroom	18'6" x 14'9"	229 sq. ft	Yes
2	Screened Porch	32'4" x 32'9"	846 sq. ft	No
3	Porch	32'4" x 10'1"	326 sq. ft	No
4	Bedroom	10'10" x 14'8"	143 sq. ft	Yes
5	Living Room	16'4" x 13'0"	212 sq. ft	Yes
6	W.I.C.	6'8" x 5'6"	37 sq. ft	Yes
7	Garage	20'10" x 19'5"	403 sq. ft	No
8	W.I.C.	4'11" x 4'10"	24 sq. ft	Yes
9	Laundry	6'5" x 5'7"	36 sq. ft	Yes
10	Swimming Pool	16'3" x 19'8"	299 sq. ft	No
11	Family Room	23'9" x 15'5"	348 sq. ft	Yes

**1883 Brae-Moor Drive, Lake Highlander, Dunedin,
Pinellas County, Florida, United States, 34698**

#		Dimensions	sqft	Counted as living area
12	Bedroom	9'5" x 14'8"	138 sq. ft	Yes
13	Bath	5'4" x 8'9"	46 sq. ft	Yes
14	Hall	8'8" x 18'3"	77 sq. ft	Yes
15	Bath	4'11" x 9'7"	47 sq. ft	Yes
16	Bath	7'11" x 7'6"	52 sq. ft	Yes
17	Bedroom	12'4" x 14'4"	177 sq. ft	Yes
18	Kitchen	22'7" x 10'1"	228 sq. ft	Yes
19	Foyer	6'4" x 10'10"	56 sq. ft	Yes
20	Hall	6'8" x 2'10"	19 sq. ft	Yes

1883 Brae-Moor Drive, Lake Highlander, Dunedin, Pinellas County, Florida, United States, 34698

1 Floor 1 - Primary Bedroom



Dimensions: 18'6" x 14'9"
Area: 229 sq. ft
Counted as living area: Yes

Heated: Yes
Finished: Yes
Enclosed: Yes
Contiguous: Yes
Permitted: Yes
Wet space: No
Addition: No
Conversion: No

2 Floor 1 - Screened Porch

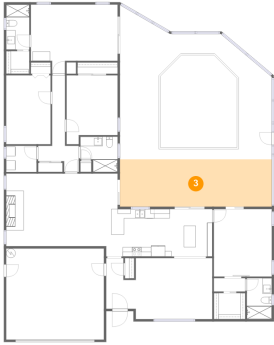


Dimensions: 32'4" x 32'9"
Area: 846 sq. ft
Counted as living area: No

Heated: No
Finished: Yes
Enclosed: No
Contiguous: Yes
Permitted: Yes
Wet space: No
Addition: No
Conversion: No

1883 Brae-Moor Drive, Lake Highlander, Dunedin, Pinellas County, Florida, United States, 34698

3 Floor 1 - Porch



Dimensions: 32'4" x 10'1"
Area: 326 sq. ft
Counted as living area: No

Heated: No
Finished: Yes
Enclosed: No
Contiguous: Yes
Permitted: Yes
Wet space: No
Addition: No
Conversion: No

4 Floor 1 - Bedroom



Dimensions: 10'10" x 14'8"
Area: 143 sq. ft
Counted as living area: Yes

Heated: Yes
Finished: Yes
Enclosed: Yes
Contiguous: Yes
Permitted: Yes
Wet space: No
Addition: No
Conversion: No

5 Floor 1 - Living Room

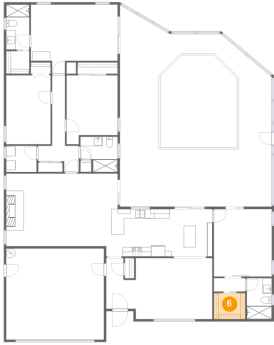


Dimensions: 16'4" x 13'0"
Area: 212 sq. ft
Counted as living area: Yes

Heated: Yes
Finished: Yes
Enclosed: Yes
Contiguous: Yes
Permitted: Yes
Wet space: No
Addition: No
Conversion: No

1883 Brae-Moor Drive, Lake Highlander, Dunedin, Pinellas County, Florida, United States, 34698

6 Floor 1 - W.I.C.



Dimensions: 6'8" x 5'6"
Area: 37 sq. ft
Counted as living area: Yes

Heated: Yes
Finished: Yes
Enclosed: Yes
Contiguous: Yes
Permitted: Yes
Wet space: No
Addition: No
Conversion: No

7 Floor 1 - Garage



Dimensions: 20'10" x 19'5"
Area: 403 sq. ft
Counted as living area: No

Heated: No
Finished: No
Enclosed: Yes
Contiguous: Yes
Permitted: Yes
Wet space: No
Addition: No
Conversion: No

8 Floor 1 - W.I.C.

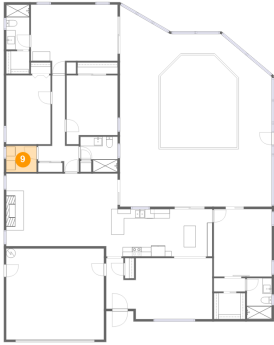


Dimensions: 4'11" x 4'10"
Area: 24 sq. ft
Counted as living area: Yes

Heated: Yes
Finished: Yes
Enclosed: Yes
Contiguous: Yes
Permitted: Yes
Wet space: No
Addition: No
Conversion: No

1883 Brae-Moor Drive, Lake Highlander, Dunedin, Pinellas County, Florida, United States, 34698

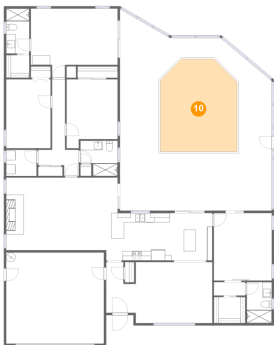
9 Floor 1 - Laundry



Dimensions: 6'5" x 5'7"
Area: 36 sq. ft
Counted as living area: Yes

Heated: Yes
Finished: Yes
Enclosed: Yes
Contiguous: Yes
Permitted: Yes
Wet space: No
Addition: No
Conversion: No

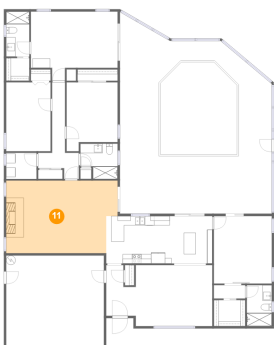
10 Floor 1 - Swimming Pool



Dimensions: 16'3" x 19'8"
Area: 299 sq. ft
Counted as living area: No

Heated: No
Finished: No
Enclosed: No
Contiguous: Yes
Permitted: No
Wet space: No
Addition: No
Conversion: No

11 Floor 1 - Family Room



Dimensions: 23'9" x 15'5"
Area: 348 sq. ft
Counted as living area: Yes

Heated: Yes
Finished: Yes
Enclosed: Yes
Contiguous: Yes
Permitted: Yes
Wet space: No
Addition: No
Conversion: No

1883 Brae-Moor Drive, Lake Highlander, Dunedin, Pinellas County, Florida, United States, 34698

12 Floor 1 - Bedroom



Dimensions: 9'5" x 14'8"
Area: 138 sq. ft
Counted as living area: Yes

Heated: Yes
Finished: Yes
Enclosed: Yes
Contiguous: Yes
Permitted: Yes
Wet space: No
Addition: No
Conversion: No

13 Floor 1 - Bath



Dimensions: 5'4" x 8'9"
Area: 46 sq. ft
Counted as living area: Yes

Heated: Yes
Finished: Yes
Enclosed: Yes
Contiguous: Yes
Permitted: Yes
Wet space: Yes
Addition: No
Conversion: No

14 Floor 1 - Hall

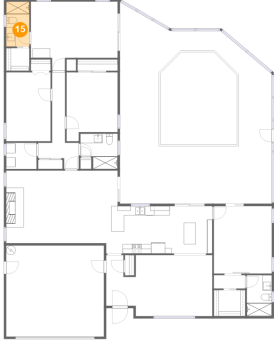


Dimensions: 8'8" x 18'3"
Area: 77 sq. ft
Counted as living area: Yes

Heated: Yes
Finished: Yes
Enclosed: Yes
Contiguous: Yes
Permitted: Yes
Wet space: No
Addition: No
Conversion: No

1883 Brae-Moor Drive, Lake Highlander, Dunedin, Pinellas County, Florida, United States, 34698

15 Floor 1 - Bath



Dimensions: 4'11" x 9'7"
Area: 47 sq. ft
Counted as living area: Yes

Heated: Yes
Finished: Yes
Enclosed: Yes
Contiguous: Yes
Permitted: Yes
Wet space: Yes
Addition: No
Conversion: No

16 Floor 1 - Bath



Dimensions: 7'11" x 7'6"
Area: 52 sq. ft
Counted as living area: Yes

Heated: Yes
Finished: Yes
Enclosed: Yes
Contiguous: Yes
Permitted: Yes
Wet space: Yes
Addition: No
Conversion: No

17 Floor 1 - Bedroom



Dimensions: 12'4" x 14'4"
Area: 177 sq. ft
Counted as living area: Yes

Heated: Yes
Finished: Yes
Enclosed: Yes
Contiguous: Yes
Permitted: Yes
Wet space: No
Addition: No
Conversion: No

1883 Brae-Moor Drive, Lake Highlander, Dunedin, Pinellas County, Florida, United States, 34698

18 Floor 1 - Kitchen



Dimensions: 22'7" x 10'1"
Area: 228 sq. ft
Counted as living area: Yes

Heated: Yes
Finished: Yes
Enclosed: Yes
Contiguous: Yes
Permitted: Yes
Wet space: No
Addition: No
Conversion: No

19 Floor 1 - Foyer



Dimensions: 6'4" x 10'10"
Area: 56 sq. ft
Counted as living area: Yes

Heated: Yes
Finished: Yes
Enclosed: Yes
Contiguous: Yes
Permitted: Yes
Wet space: No
Addition: No
Conversion: No

20 Floor 1 - Hall



Dimensions: 6'8" x 2'10"
Area: 19 sq. ft
Counted as living area: Yes

Heated: Yes
Finished: Yes
Enclosed: Yes
Contiguous: Yes
Permitted: Yes
Wet space: No
Addition: No
Conversion: No