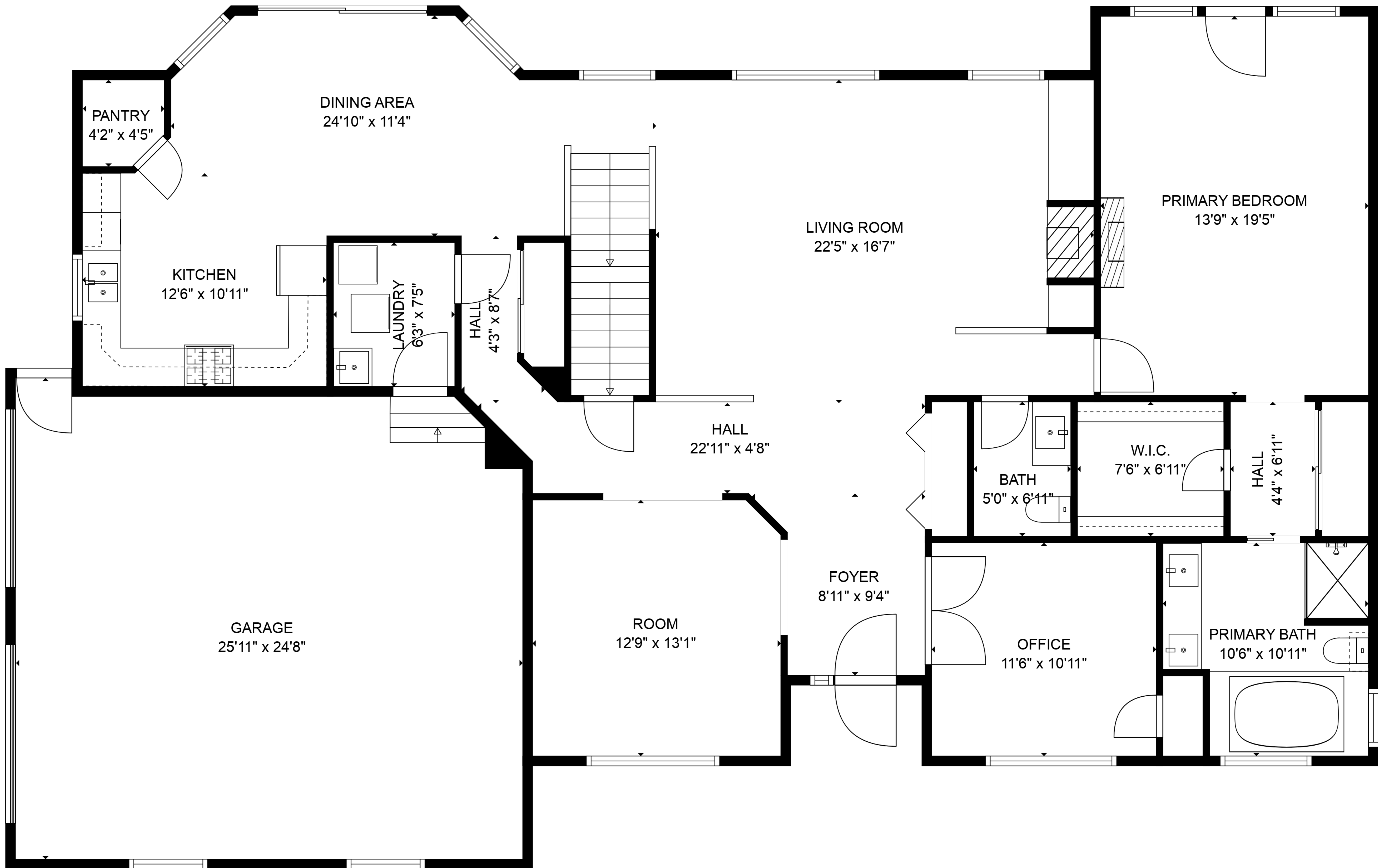


BASEMENT
28'7" x 34'7"

TOTAL: 2679 sq. ft
BELOW GROUND: 0 sq. ft, FLOOR 2: 1914 sq. ft, FLOOR 3: 765 sq. ft
EXCLUDED AREAS: BASEMENT: 958 sq. ft, GARAGE: 612 sq. ft, OPEN TO BELOW: 370 sq. ft

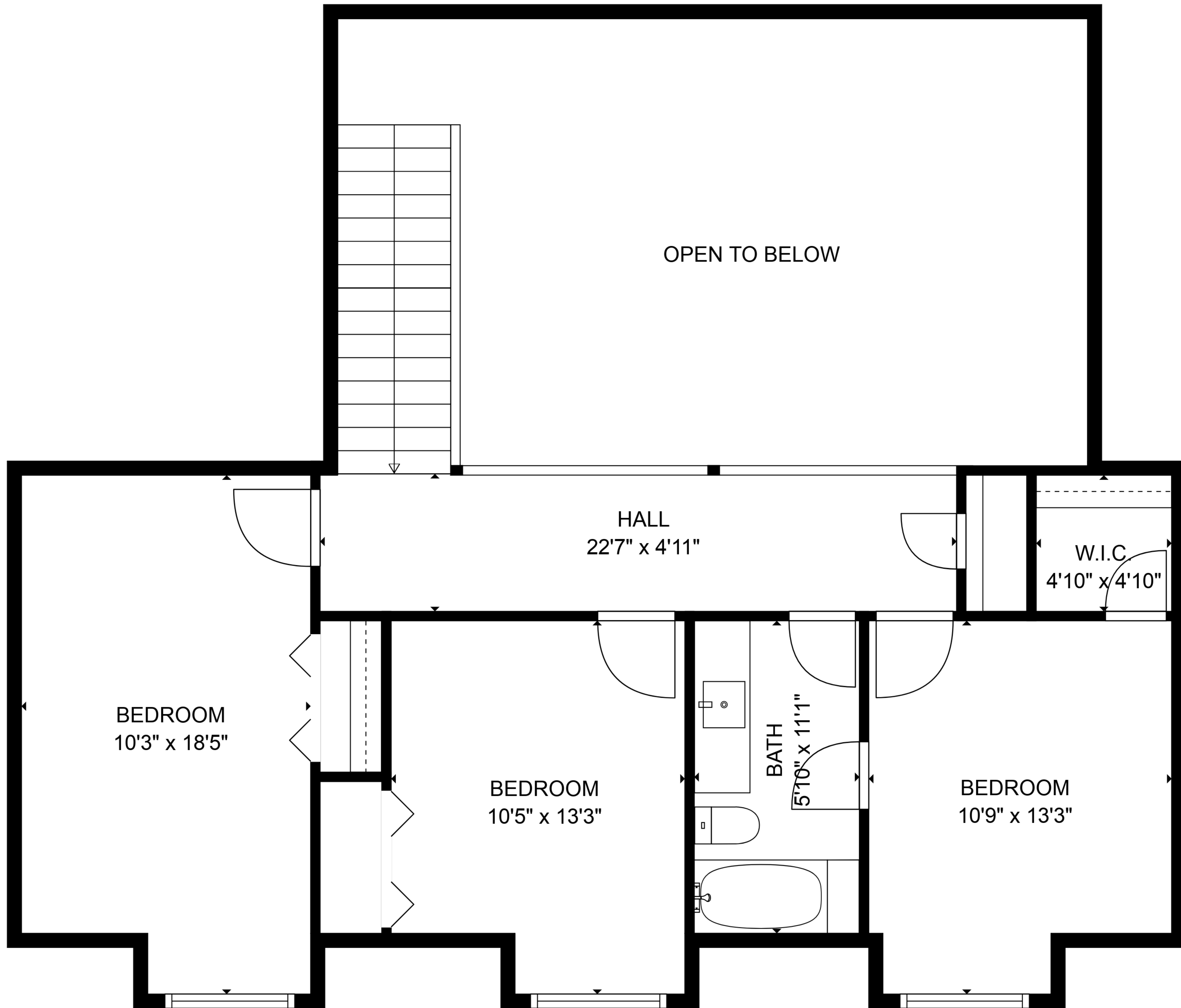
SIZES AND DIMENSIONS ARE APPROXIMATE, ACTUAL MAY VARY.



TOTAL: 2679 sq. ft

BELOW GROUND: 0 sq. ft, FLOOR 2: 1914 sq. ft, FLOOR 3: 765 sq. ft
 EXCLUDED AREAS: BASEMENT: 958 sq. ft, GARAGE: 612 sq. ft, OPEN TO BELOW: 370 sq. ft

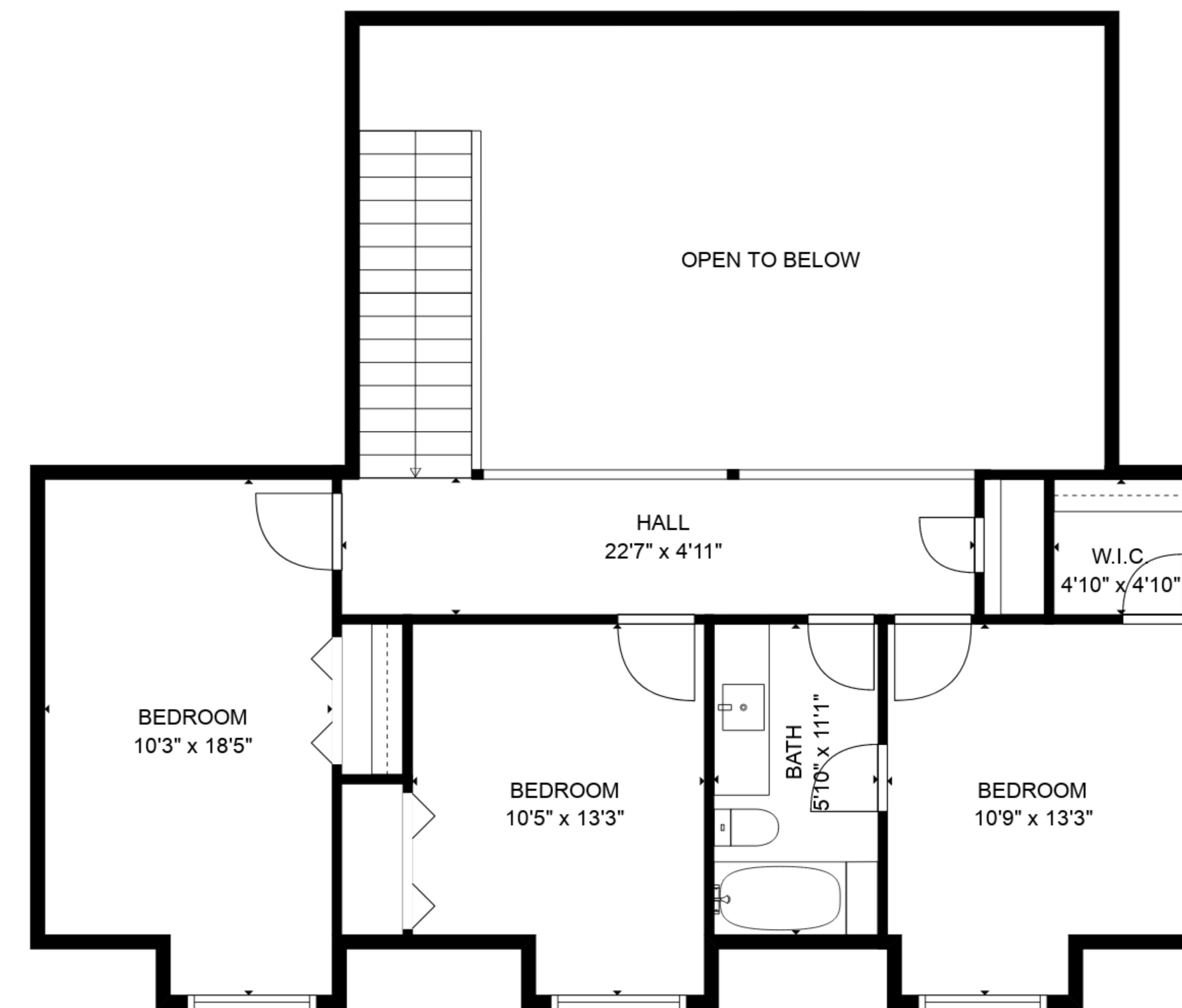
SIZES AND DIMENSIONS ARE APPROXIMATE, ACTUAL MAY VARY.



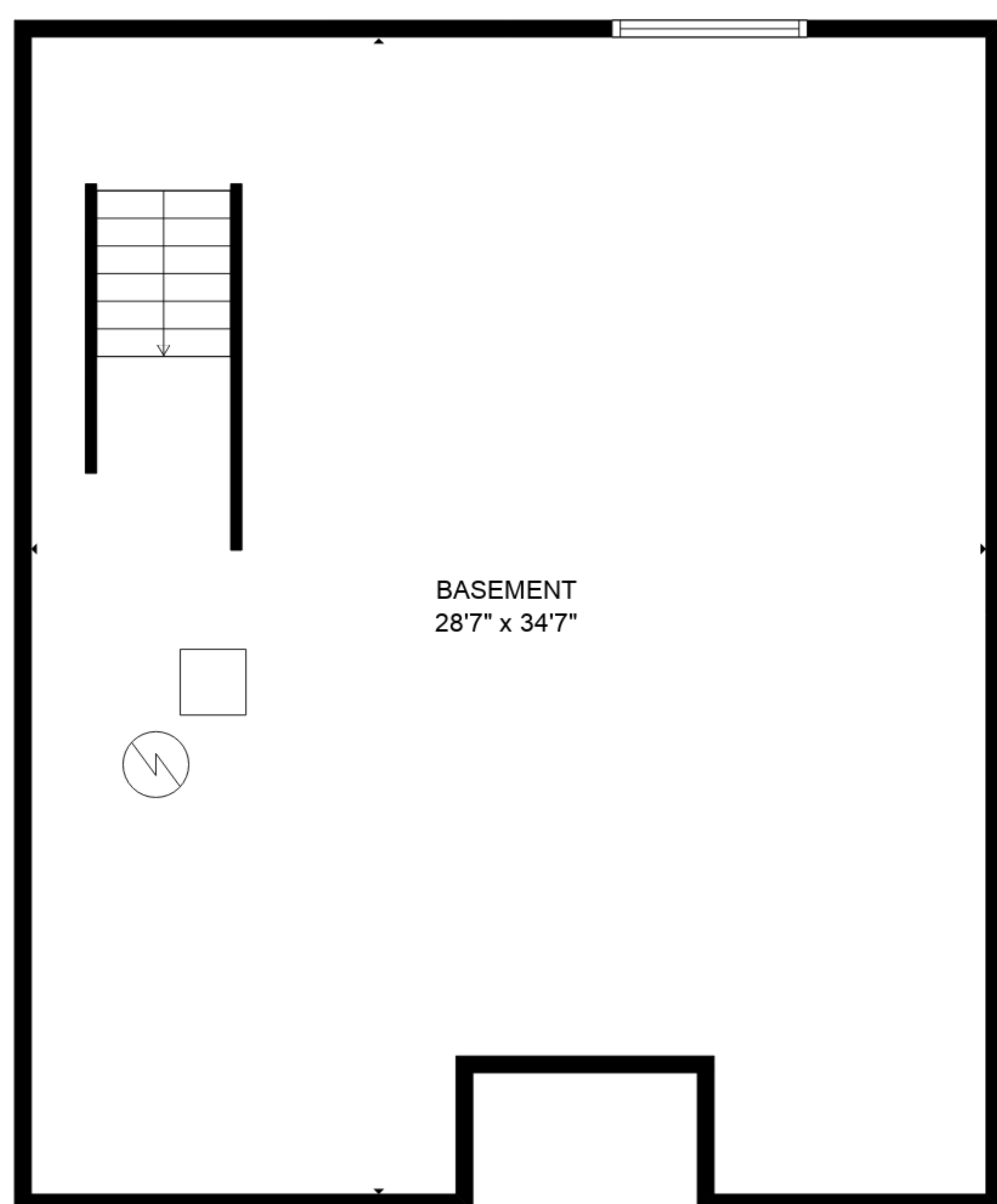
TOTAL: 2679 sq. ft

BELOW GROUND: 0 sq. ft, FLOOR 2: 1914 sq. ft, FLOOR 3: 765 sq. ft
EXCLUDED AREAS: BASEMENT: 958 sq. ft, GARAGE: 612 sq. ft, OPEN TO BELOW: 370 sq. ft

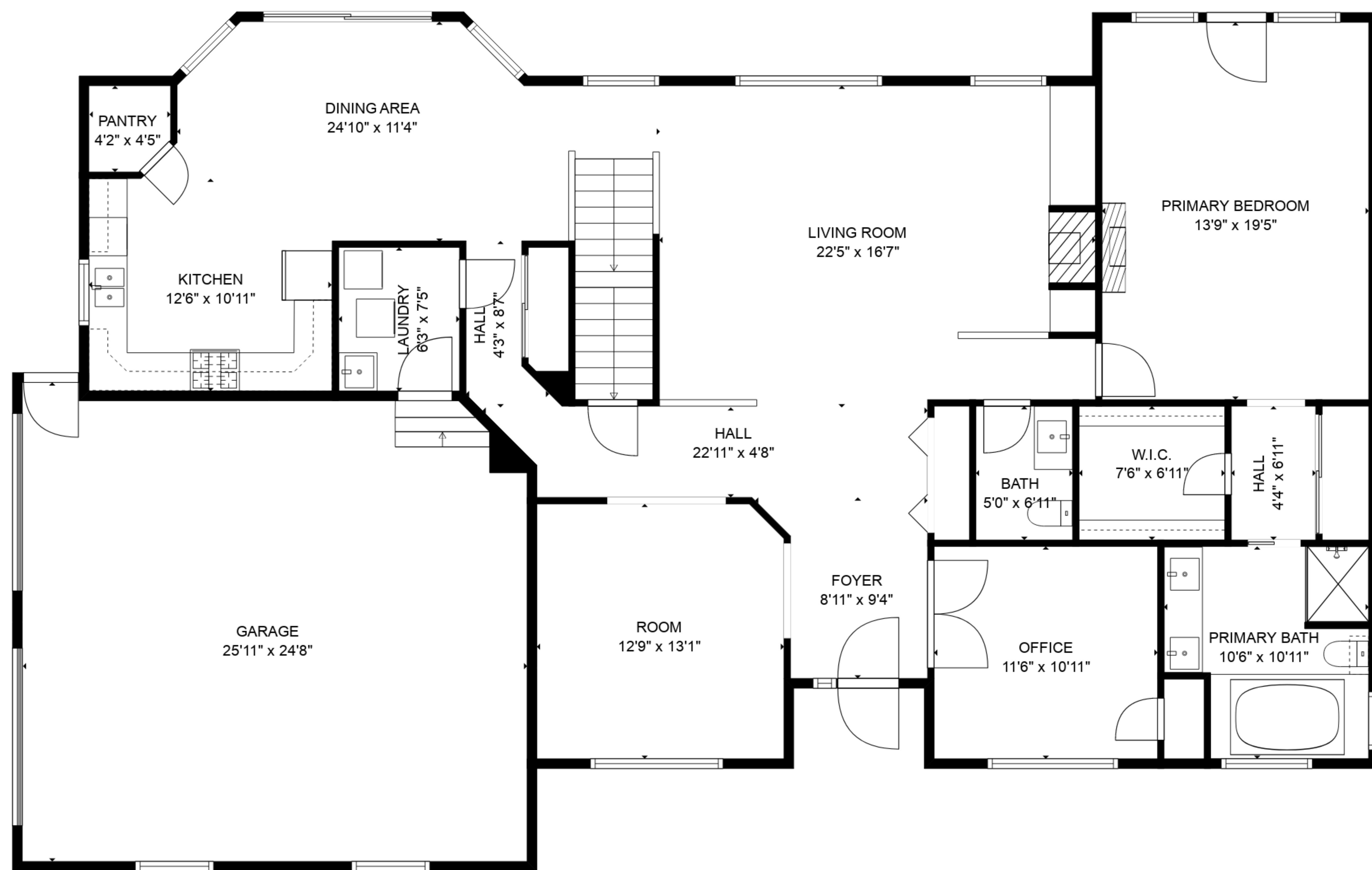
SIZES AND DIMENSIONS ARE APPROXIMATE, ACTUAL MAY VARY.



FLOOR 3



FLOOR 1



FLOOR 2

TOTAL: 2679 sq. ft
 BELOW GROUND: 0 sq. ft, FLOOR 2: 1914 sq. ft, FLOOR 3: 765 sq. ft
 EXCLUDED AREAS: BASEMENT: 958 sq. ft, GARAGE: 612 sq. ft, OPEN TO BELOW: 370 sq. ft

SIZES AND DIMENSIONS ARE APPROXIMATE, ACTUAL MAY VARY.