



Home report


1453 S 2nd St,Louisville,KY,US




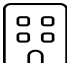
Property summary


**0** Garages


**2** Bedrooms

**1** Bathrooms

**1** Half baths

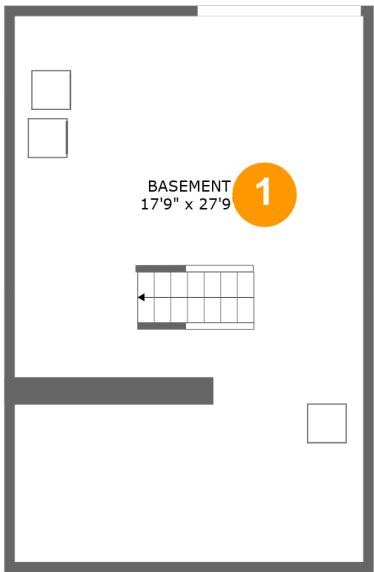
**4** Floors

**1,940** Gross living area sqft

**3,051** Total sqft

Home report

1453 S 2nd St,Louisville,KY,US



Room dimensions

Floor 1Total sqft: 539 Living area: 0

#		Max Dimensions	sqft	Included
1	Basement	17'9" x 27'9"	479 sq. ft	No

Home report

1453 S 2nd St,Louisville,KY,US



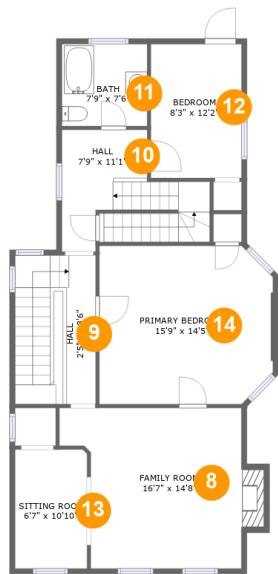
Room dimensions

Floor 2 Total sqft: 951 Living area: 933

#		Max Dimensions	sqft	Included
2	Living Room	12'3" x 14'7"	186 sq. ft	Yes
3	Hall	5'2" x 5'6"	28 sq. ft	Yes
4	WC	3'11" x 5'9"	21 sq. ft	Yes
5	Kitchen	16'4" x 16'9"	227 sq. ft	Yes
6	Dining Room	15'1" x 14'5"	209 sq. ft	Yes
7	Foyer	8'1" x 24'1"	177 sq. ft	Yes

Home report

1453 S 2nd St,Louisville,KY,US



Room dimensions

Floor 3 Total sqft: 1020 Living area: 1007

#		Max Dimensions	sqft	Included
8	Family Room	16'7" x 14'8"	222 sq. ft	Yes
9	Hall	2'5" x 13'6"	100 sq. ft	Yes
10	Hall	7'9" x 11'1"	110 sq. ft	Yes
11	Bath	7'9" x 7'6"	58 sq. ft	Yes
12	Bedroom	8'3" x 12'2"	101 sq. ft	Yes
13	Sitting Room	6'7" x 10'10"	71 sq. ft	Yes
14	Primary Bedroom	15'9" x 14'5"	220 sq. ft	Yes

Home report

1453 S 2nd St,Louisville,KY,US

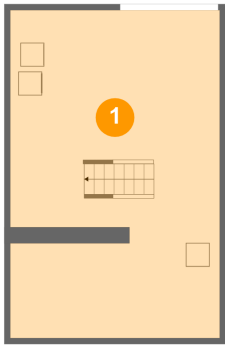


Room dimensions

Floor 4 Total sqft: 541 Living area: 0

#		Max Dimensions	sqft	Included
15	Attic	13'6" x 36'4"	304 sq. ft	No

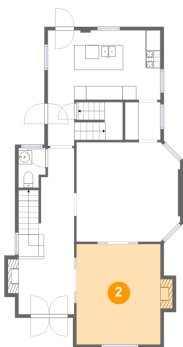
1 Floor 1 - Basement



Max Dimensions: 17'9" x 27'9"
Calculated Area: 479 sq. ft
Included: No

Heated: Yes
Finished: No
Enclosed: Yes
Contiguous: Yes
Permitted: Yes
Wet space: No
Addition: No
Conversion: No

2 Floor 2 - Living Room



Max Dimensions: 12'3" x 14'7"
Calculated Area: 186 sq. ft
Included: Yes

Heated: Yes
Finished: Yes
Enclosed: Yes
Contiguous: Yes
Permitted: Yes
Wet space: No
Addition: No
Conversion: No

3 Floor 2 - Hall



Max Dimensions: 5'2" x 5'6"
Calculated Area: 28 sq. ft
Included: Yes

Heated: Yes
Finished: Yes
Enclosed: Yes
Contiguous: Yes
Permitted: Yes
Wet space: No
Addition: No
Conversion: No

4 Floor 2 - WC



Max Dimensions: 3'11" x 5'9"
Calculated Area: 21 sq. ft
Included: Yes

Heated: Yes
Finished: Yes
Enclosed: Yes
Contiguous: Yes
Permitted: Yes
Wet space: No
Addition: No
Conversion: No

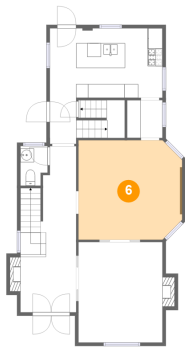
5 Floor 2 - Kitchen



Max Dimensions: 16'4" x 16'9"
Calculated Area: 227 sq. ft
Included: Yes

Heated: Yes
Finished: Yes
Enclosed: Yes
Contiguous: Yes
Permitted: Yes
Wet space: No
Addition: No
Conversion: No

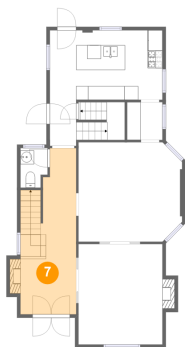
6 Floor 2 - Dining Room



Max Dimensions: 15'1" x 14'5"
Calculated Area: 209 sq. ft
Included: Yes

Heated: Yes
Finished: Yes
Enclosed: Yes
Contiguous: Yes
Permitted: Yes
Wet space: No
Addition: No
Conversion: No

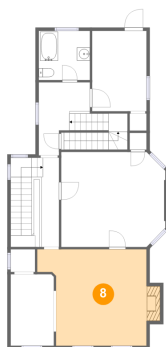
7 Floor 2 - Foyer



Max Dimensions: 8'1" x 24'1"
Calculated Area: 177 sq. ft
Included: Yes

Heated: Yes
Finished: Yes
Enclosed: Yes
Contiguous: Yes
Permitted: Yes
Wet space: No
Addition: No
Conversion: No

8 Floor 3 - Family Room



Max Dimensions: 16'7" x 14'8"
Calculated Area: 222 sq. ft
Included: Yes

Heated: Yes
Finished: Yes
Enclosed: Yes
Contiguous: Yes
Permitted: Yes
Wet space: No
Addition: No
Conversion: No

9 Floor 3 - Hall



Max Dimensions: 2'5" x 13'6"
Calculated Area: 100 sq. ft
Included: Yes

Heated: Yes
Finished: Yes
Enclosed: Yes
Contiguous: Yes
Permitted: Yes
Wet space: No
Addition: No
Conversion: No

10 Floor 3 - Hall



Max Dimensions: 7'9" x 11'1"
Calculated Area: 110 sq. ft
Included: Yes

Heated: Yes
Finished: Yes
Enclosed: Yes
Contiguous: Yes
Permitted: Yes
Wet space: No
Addition: No
Conversion: No

11 Floor 3 - Bath



Max Dimensions: 7'9" x 7'6"
Calculated Area: 58 sq. ft
Included: Yes

Heated: Yes
Finished: Yes
Enclosed: Yes
Contiguous: Yes
Permitted: Yes
Wet space: Yes
Addition: No
Conversion: No

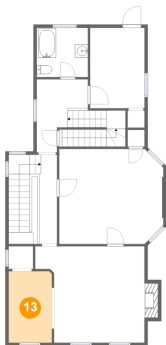
12 Floor 3 - Bedroom



Max Dimensions: 8'3" x 12'2"
Calculated Area: 101 sq. ft
Included: Yes

Heated: Yes
Finished: Yes
Enclosed: Yes
Contiguous: Yes
Permitted: Yes
Wet space: No
Addition: No
Conversion: No

13 Floor 3 - Sitting Room



Max Dimensions: 6'7" x 10'10"
Calculated Area: 71 sq. ft
Included: Yes

Heated: Yes
Finished: Yes
Enclosed: Yes
Contiguous: Yes
Permitted: Yes
Wet space: No
Addition: No
Conversion: No

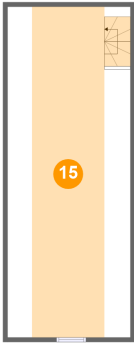
14 Floor 3 - Primary Bedroom



Max Dimensions: 15'9" x 14'5"
Calculated Area: 220 sq. ft
Included: Yes

Heated: Yes
Finished: Yes
Enclosed: Yes
Contiguous: Yes
Permitted: Yes
Wet space: No
Addition: No
Conversion: No

15 Floor 4 - Attic



Max Dimensions: 13'6" x 36'4"
Calculated Area: 304 sq. ft
Included: No

Heated: No
Finished: No
Enclosed: Yes
Contiguous: Yes
Permitted: Yes
Wet space: No
Addition: No
Conversion: No