

7 Pso De Rincon, Santa Fe, NM, US

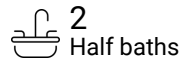
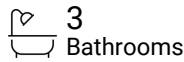


FLOOR 2



FLOOR 1

Property summary



7 Pso De Rincon,Santa Fe,NM,US



Room dimensions

Floor 1

Total sqft: 3383 Living area: 2403

#		Dimensions	sqft	Counted as living area
1	Office	14'3" x 10'7"	122 sq. ft	Yes
2	Covered Patio	5'9" x 30'11"	179 sq. ft	No
3	WC	4'0" x 7'5"	30 sq. ft	Yes
4	Laundry	7'2" x 7'1"	51 sq. ft	Yes
5	Foyer	26'5" x 13'4"	244 sq. ft	Yes
6	Breakfast Nook	10'7" x 17'0"	135 sq. ft	Yes
7	Dining Room	2'5" x 2'5"	12 sq. ft	Yes
8	Kitchen	17'5" x 20'3"	299 sq. ft	Yes
9	Garage	22'11" x 31'7"	725 sq. ft	No
10	Bedroom	12'2" x 14'7"	173 sq. ft	Yes
11	Entry	11'10" x 7'3"	86 sq. ft	Yes

Scan captured on Wed, 12 Mar 2025 23:45:34 GMT

Information is calculated by Cubicasa technology deemed highly reliable but not guaranteed.

7 Pso De Rincon,Santa Fe,NM,US

#		Dimensions	sqft	Counted as living area
12	Hall	14'4" x 13'7"	200 sq. ft	Yes
13	W.I.C.	4'5" x 7'0"	31 sq. ft	Yes
14	Dining Room	12'9" x 13'8"	164 sq. ft	Yes
15	Pantry	6'2" x 5'0"	20 sq. ft	Yes
16	Bedroom	12'4" x 14'5"	174 sq. ft	Yes
17	W.I.C.	4'4" x 7'0"	31 sq. ft	Yes
18	Bath	9'2" x 7'2"	66 sq. ft	Yes
19	Family Room	18'7" x 17'7"	315 sq. ft	Yes

7 Pso De Rincon, Santa Fe, NM, US



Room dimensions

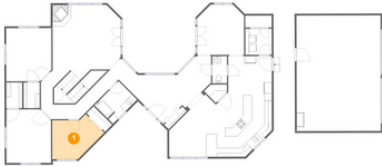
Floor 2

Total sqft: 762 Living area: 681

#		Dimensions	sqft	Counted as living area
20	Hall	12'4" x 5'7"	69 sq. ft	Yes
21	Primary Bedroom	14'7" x 17'2"	247 sq. ft	Yes
22	W.I.C.	3'6" x 9'4"	33 sq. ft	Yes
23	Primary Bath	8'10" x 9'3"	80 sq. ft	Yes
24	Balcony	7'1" x 10'11"	81 sq. ft	No
25	Hall	4'2" x 2'11"	88 sq. ft	Yes
26	W.I.C.	6'6" x 6'2"	40 sq. ft	Yes
27	W.I.C.	5'6" x 6'2"	34 sq. ft	Yes

7 Pso De Rincon,Santa Fe,NM,US

1 Floor 1 - Office



Dimensions: 14'3" x 10'7"
Area: 122 sq. ft
Counted as living area: Yes

Heated: Yes
Finished: Yes
Enclosed: Yes
Contiguous: Yes
Permitted: Yes
Wet space: No
Addition: No
Conversion: No

2 Floor 1 - Covered Patio



Dimensions: 5'9" x 30'11"
Area: 179 sq. ft
Counted as living area: No

Heated: No
Finished: Yes
Enclosed: No
Contiguous: Yes
Permitted: Yes
Wet space: No
Addition: No
Conversion: No

7 Pso De Rincon,Santa Fe,NM,US

3 Floor 1 - WC



Dimensions: 4'0" x 7'5"
Area: 30 sq. ft
Counted as living area: Yes

Heated: Yes
Finished: Yes
Enclosed: Yes
Contiguous: Yes
Permitted: Yes
Wet space: Yes
Addition: No
Conversion: No

4 Floor 1 - Laundry



Dimensions: 7'2" x 7'1"
Area: 51 sq. ft
Counted as living area: Yes

Heated: Yes
Finished: Yes
Enclosed: Yes
Contiguous: Yes
Permitted: Yes
Wet space: No
Addition: No
Conversion: No

5 Floor 1 - Foyer



Dimensions: 26'5" x 13'4"
Area: 244 sq. ft
Counted as living area: Yes

Heated: Yes
Finished: Yes
Enclosed: Yes
Contiguous: Yes
Permitted: Yes
Wet space: No
Addition: No
Conversion: No

7 Pso De Rincon,Santa Fe,NM,US

6 Floor 1 - Breakfast Nook



Dimensions: 10'7" x 17'0"
Area: 135 sq. ft
Counted as living area: Yes

Heated: Yes
Finished: Yes
Enclosed: Yes
Contiguous: Yes
Permitted: Yes
Wet space: No
Addition: No
Conversion: No

7 Floor 1 - Dining Room



Dimensions: 2'5" x 2'5"
Area: 12 sq. ft
Counted as living area: Yes

Heated: Yes
Finished: Yes
Enclosed: Yes
Contiguous: Yes
Permitted: Yes
Wet space: No
Addition: No
Conversion: No

8 Floor 1 - Kitchen



Dimensions: 17'5" x 20'3"
Area: 299 sq. ft
Counted as living area: Yes

Heated: Yes
Finished: Yes
Enclosed: Yes
Contiguous: Yes
Permitted: Yes
Wet space: No
Addition: No
Conversion: No

7 Pso De Rincon,Santa Fe,NM,US

9 Floor 1 - Garage



Dimensions: 22'11" x 31'7"
Area: 725 sq. ft
Counted as living area: No

Heated: No
Finished: No
Enclosed: Yes
Contiguous: Yes
Permitted: Yes
Wet space: No
Addition: No
Conversion: No

10 Floor 1 - Bedroom



Dimensions: 12'2" x 14'7"
Area: 173 sq. ft
Counted as living area: Yes

Heated: Yes
Finished: Yes
Enclosed: Yes
Contiguous: Yes
Permitted: Yes
Wet space: No
Addition: No
Conversion: No

11 Floor 1 - Entry



Dimensions: 11'10" x 7'3"
Area: 86 sq. ft
Counted as living area: Yes

Heated: Yes
Finished: Yes
Enclosed: Yes
Contiguous: Yes
Permitted: Yes
Wet space: No
Addition: No
Conversion: No

7 Pso De Rincon,Santa Fe,NM,US

12 Floor 1 - Hall



Dimensions: 14'4" x 13'7"
Area: 200 sq. ft
Counted as living area: Yes

Heated: Yes
Finished: Yes
Enclosed: Yes
Contiguous: Yes
Permitted: Yes
Wet space: No
Addition: No
Conversion: No

13 Floor 1 - W.I.C.



Dimensions: 4'5" x 7'0"
Area: 31 sq. ft
Counted as living area: Yes

Heated: Yes
Finished: Yes
Enclosed: Yes
Contiguous: Yes
Permitted: Yes
Wet space: No
Addition: No
Conversion: No

14 Floor 1 - Dining Room



Dimensions: 12'9" x 13'8"
Area: 164 sq. ft
Counted as living area: Yes

Heated: Yes
Finished: Yes
Enclosed: Yes
Contiguous: Yes
Permitted: Yes
Wet space: No
Addition: No
Conversion: No

7 Pso De Rincon,Santa Fe,NM,US

15 Floor 1 - Pantry



Dimensions: 6'2" x 5'0"
Area: 20 sq. ft
Counted as living area: Yes

Heated: Yes
Finished: Yes
Enclosed: Yes
Contiguous: Yes
Permitted: Yes
Wet space: No
Addition: No
Conversion: No

16 Floor 1 - Bedroom



Dimensions: 12'4" x 14'5"
Area: 174 sq. ft
Counted as living area: Yes

Heated: Yes
Finished: Yes
Enclosed: Yes
Contiguous: Yes
Permitted: Yes
Wet space: No
Addition: No
Conversion: No

17 Floor 1 - W.I.C.



Dimensions: 4'4" x 7'0"
Area: 31 sq. ft
Counted as living area: Yes

Heated: Yes
Finished: Yes
Enclosed: Yes
Contiguous: Yes
Permitted: Yes
Wet space: No
Addition: No
Conversion: No

7 Pso De Rincon,Santa Fe,NM,US

18 Floor 1 - Bath



Dimensions: 9'2" x 7'2"
Area: 66 sq. ft
Counted as living area: Yes

Heated: Yes
Finished: Yes
Enclosed: Yes
Contiguous: Yes
Permitted: Yes
Wet space: Yes
Addition: No
Conversion: No

19 Floor 1 - Family Room



Dimensions: 18'7" x 17'7"
Area: 315 sq. ft
Counted as living area: Yes

Heated: Yes
Finished: Yes
Enclosed: Yes
Contiguous: Yes
Permitted: Yes
Wet space: No
Addition: No
Conversion: No

20 Floor 2 - Hall



Dimensions: 12'4" x 5'7"
Area: 69 sq. ft
Counted as living area: Yes

Heated: Yes
Finished: Yes
Enclosed: Yes
Contiguous: Yes
Permitted: Yes
Wet space: No
Addition: No
Conversion: No

7 Pso De Rincon,Santa Fe,NM,US

21 Floor 2 - Primary Bedroom



Dimensions: 14'7" x 17'2"
Area: 247 sq. ft
Counted as living area: Yes

Heated: Yes
Finished: Yes
Enclosed: Yes
Contiguous: Yes
Permitted: Yes
Wet space: No
Addition: No
Conversion: No

22 Floor 2 - W.I.C.



Dimensions: 3'6" x 9'4"
Area: 33 sq. ft
Counted as living area: Yes

Heated: Yes
Finished: Yes
Enclosed: Yes
Contiguous: Yes
Permitted: Yes
Wet space: No
Addition: No
Conversion: No

23 Floor 2 - Primary Bath



Dimensions: 8'10" x 9'3"
Area: 80 sq. ft
Counted as living area: Yes

Heated: Yes
Finished: Yes
Enclosed: Yes
Contiguous: Yes
Permitted: Yes
Wet space: Yes
Addition: No
Conversion: No

7 Pso De Rincon,Santa Fe,NM,US

24 Floor 2 - Balcony



Dimensions: 7'1" x 10'11"
Area: 81 sq. ft
Counted as living area: No

Heated: No
Finished: Yes
Enclosed: No
Contiguous: Yes
Permitted: Yes
Wet space: No
Addition: No
Conversion: No

25 Floor 2 - Hall



Dimensions: 4'2" x 2'11"
Area: 88 sq. ft
Counted as living area: Yes

Heated: Yes
Finished: Yes
Enclosed: Yes
Contiguous: Yes
Permitted: Yes
Wet space: No
Addition: No
Conversion: No

26 Floor 2 - W.I.C.



Dimensions: 6'6" x 6'2"
Area: 40 sq. ft
Counted as living area: Yes

Heated: Yes
Finished: Yes
Enclosed: Yes
Contiguous: Yes
Permitted: Yes
Wet space: No
Addition: No
Conversion: No

7 Pso De Rincon, Santa Fe, NM, US

27 Floor 2 - W.I.C.



Dimensions: 5'6" x 6'2"
Area: 34 sq. ft
Counted as living area: Yes

Heated: Yes
Finished: Yes
Enclosed: Yes
Contiguous: Yes
Permitted: Yes
Wet space: No
Addition: No
Conversion: No