


Home data report

315 West Elm Street, Titusville, Crawford County,
Pennsylvania, United States, 16354



Property summary


 **0** Garages

 **3** Bedrooms

 **1** Bathrooms

 **1** Half baths

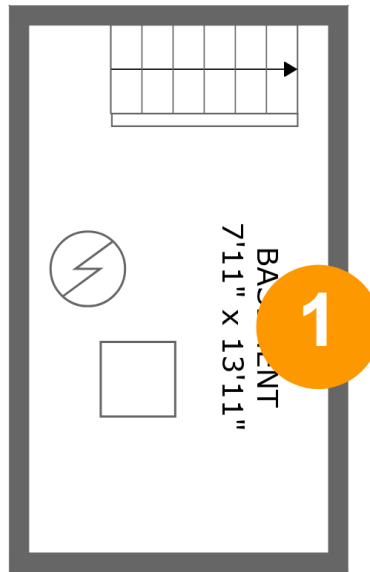
 **3** Floors

 **1,473** Gross living area sqft

 **1,724** Total sqft

Home data report

315 West Elm Street, Titusville, Crawford County,
Pennsylvania, United States, 16354



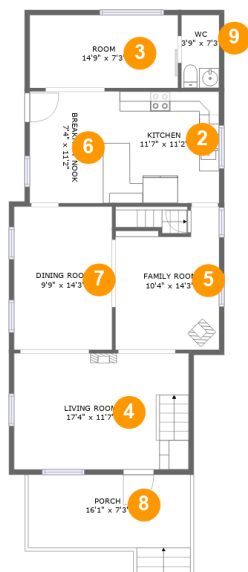
Room dimensions

Floor 1

Total sqft: 133

Living area: 0

#		Dimensions	sqft	Counted as living area
1	Basement	7'11" x 13'11"	111 sq. ft	No

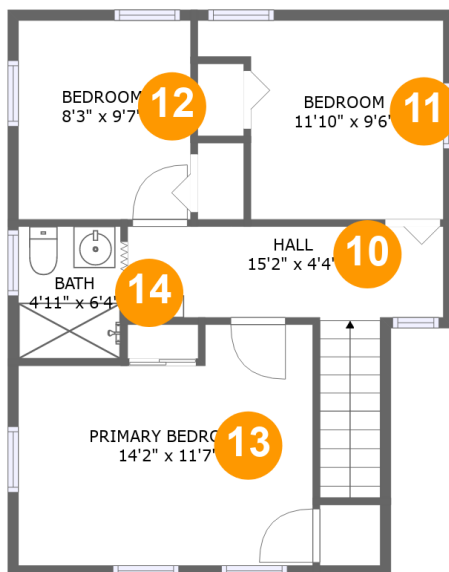


Room dimensions

Floor 2

Total sqft: 1044 Living area: 926

#		Dimensions	sqft	Counted as living area
2	Kitchen	11'7" x 11'2"	129 sq. ft	Yes
3	Room	14'9" x 7'3"	108 sq. ft	Yes
4	Living Room	17'4" x 11'7"	202 sq. ft	Yes
5	Living Room	10'4" x 14'3"	128 sq. ft	Yes
6	Nook	7'4" x 11'2"	81 sq. ft	Yes
7	Dining Room	9'9" x 14'3"	139 sq. ft	Yes
8	Outdoor	16'1" x 7'3"	118 sq. ft	No
9	Bath	3'9" x 7'3"	27 sq. ft	Yes



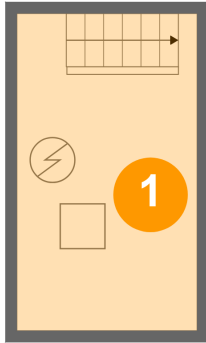
Room dimensions

Floor 3

Total sqft: 547 Living area: 547

#		Dimensions	sqft	Counted as living area
10	Hall	15'2" x 4'4"	92 sq. ft	Yes
11	Bedroom	11'10" x 9'6"	93 sq. ft	Yes
12	Bedroom	8'3" x 9'7"	79 sq. ft	Yes
13	Bedroom	14'2" x 11'7"	146 sq. ft	Yes
14	Bath	4'11" x 6'4"	31 sq. ft	Yes

1 Floor 1 - Basement



Dimensions: 7'11" x 13'11"
Area: 111 sq. ft
Counted as living area: No

Heated: No
Finished: No
Enclosed: Yes
Contiguous: Yes
Permitted: Yes
Wet space: No
Addition: No
Conversion: No

2 Floor 2 - Kitchen



Dimensions: 11'7" x 11'2"
Area: 129 sq. ft
Counted as living area: Yes

Heated: Yes
Finished: Yes
Enclosed: Yes
Contiguous: Yes
Permitted: Yes
Wet space: No
Addition: No
Conversion: No

3 Floor 2 - Room



Dimensions: 14'9" x 7'3"
Area: 108 sq. ft
Counted as living area: Yes

Heated: Yes
Finished: Yes
Enclosed: Yes
Contiguous: Yes
Permitted: Yes
Wet space: No
Addition: No
Conversion: No

4 Floor 2 - Living Room



Dimensions: 17'4" x 11'7"
Area: 202 sq. ft
Counted as living area: Yes

Heated: Yes
Finished: Yes
Enclosed: Yes
Contiguous: Yes
Permitted: Yes
Wet space: No
Addition: No
Conversion: No

5 Floor 2 - Living Room



Dimensions: 10'4" x 14'3"
Area: 128 sq. ft
Counted as living area: Yes

Heated: Yes
Finished: Yes
Enclosed: Yes
Contiguous: Yes
Permitted: Yes
Wet space: No
Addition: No
Conversion: No

6 Floor 2 - Nook



Dimensions: 7'4" x 11'2"
Area: 81 sq. ft
Counted as living area: Yes

Heated: Yes
Finished: Yes
Enclosed: Yes
Contiguous: Yes
Permitted: Yes
Wet space: No
Addition: No
Conversion: No

7 Floor 2 - Dining Room



Dimensions: 9'9" x 14'3"
Area: 139 sq. ft
Counted as living area: Yes

Heated: Yes
Finished: Yes
Enclosed: Yes
Contiguous: Yes
Permitted: Yes
Wet space: No
Addition: No
Conversion: No

8 Floor 2 - Outdoor



Dimensions: 16'1" x 7'3"
Area: 118 sq. ft
Counted as living area: No

Heated: No
Finished: Yes
Enclosed: No
Contiguous: Yes
Permitted: Yes
Wet space: No
Addition: No
Conversion: No

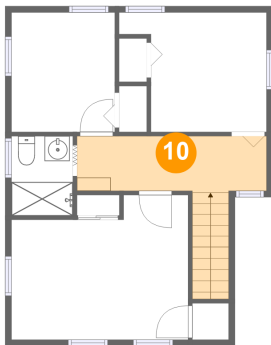
9 Floor 2 - Bath



Dimensions: 3'9" x 7'3"
Area: 27 sq. ft
Counted as living area: Yes

Heated: Yes
Finished: Yes
Enclosed: Yes
Contiguous: Yes
Permitted: Yes
Wet space: No
Addition: No
Conversion: No

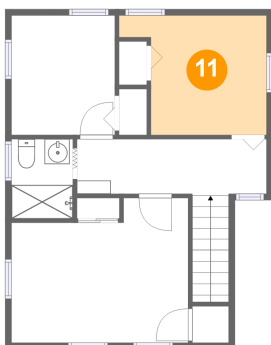
10 Floor 3 - Hall



Dimensions: 15'2" x 4'4"
Area: 92 sq. ft
Counted as living area: Yes

Heated: Yes
Finished: Yes
Enclosed: Yes
Contiguous: Yes
Permitted: Yes
Wet space: No
Addition: No
Conversion: No

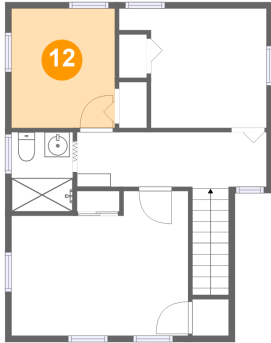
11 Floor 3 - Bedroom



Dimensions: 11'10" x 9'6"
Area: 93 sq. ft
Counted as living area: Yes

Heated: Yes
Finished: Yes
Enclosed: Yes
Contiguous: Yes
Permitted: Yes
Wet space: No
Addition: No
Conversion: No

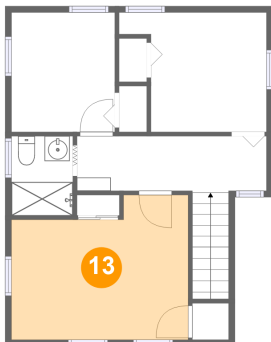
12 Floor 3 - Bedroom



Dimensions: 8'3" x 9'7"
Area: 79 sq. ft
Counted as living area: Yes

Heated: Yes
Finished: Yes
Enclosed: Yes
Contiguous: Yes
Permitted: Yes
Wet space: No
Addition: No
Conversion: No

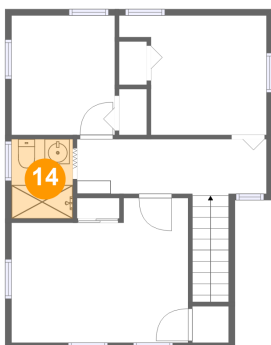
13 Floor 3 - Bedroom



Dimensions: 14'2" x 11'7"
Area: 146 sq. ft
Counted as living area: Yes

Heated: Yes
Finished: Yes
Enclosed: Yes
Contiguous: Yes
Permitted: Yes
Wet space: No
Addition: No
Conversion: No

14 Floor 3 - Bath



Dimensions: 4'11" x 6'4"
Area: 31 sq. ft
Counted as living area: Yes

Heated: Yes
Finished: Yes
Enclosed: Yes
Contiguous: Yes
Permitted: Yes
Wet space: Yes
Addition: No
Conversion: No