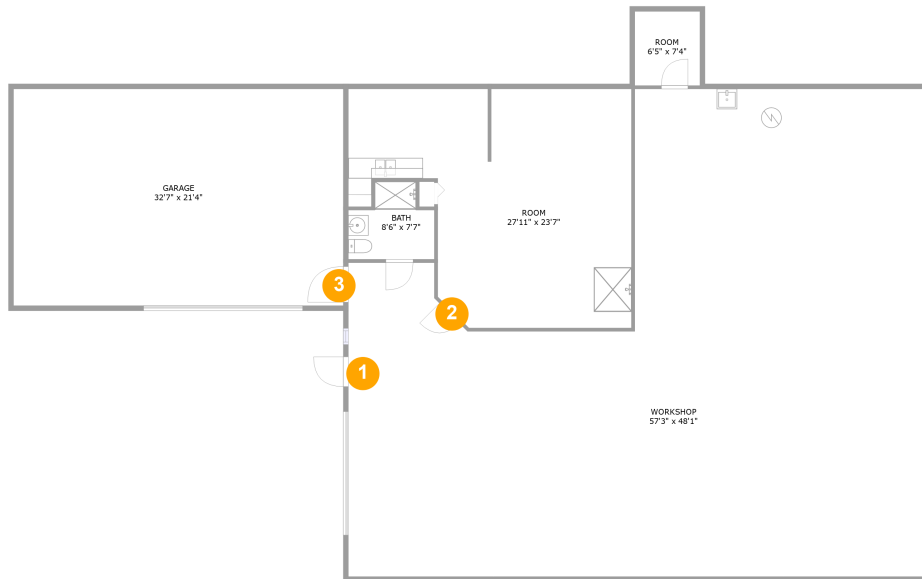


Photo Report Office Bldg 1

**7703 Perry Highway, Ross Township, Pittsburgh,
Allegheny County, Pennsylvania, United States,**



Room number	Room name	Room area	Room Dimensions
1	Workshop	2139 sq. ft	57'3" x 48'1"
2	Room	527 sq. ft	27'11" x 23'7"
3	Garage	695 sq. ft	32'7" x 21'4"

Scan captured on Thu, 20 Jun 2024 22:09:14 GMT

Information is calculated by CubiCasa technology; deemed highly reliable but not guaranteed.

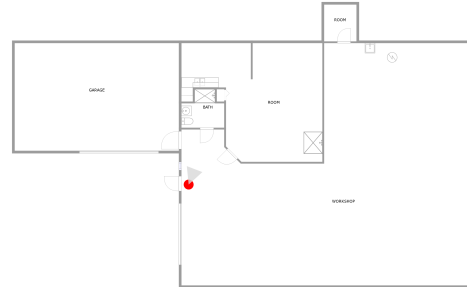
Photo Report

**7703 Perry Highway, Ross Township, Pittsburgh,
Allegheny County, Pennsylvania, United States,**



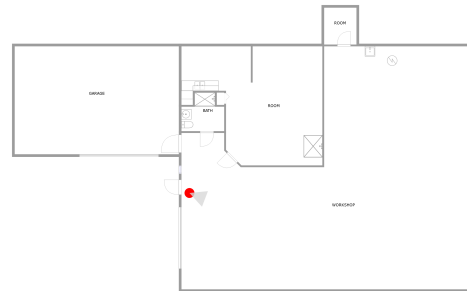
WORKSHOP (1)

Floor 1 / 2139 sq. ft



WORKSHOP (1)

Floor 1 / 2139 sq. ft



Scan captured on Thu, 20 Jun 2024 22:09:14 GMT

Information is calculated by CubiCasa technology; deemed highly reliable but not guaranteed.

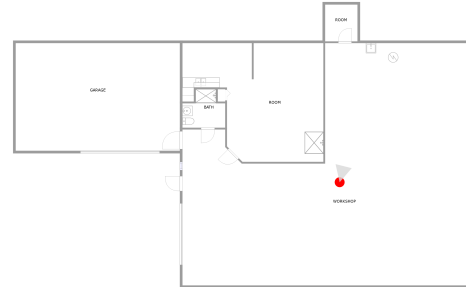
Photo Report

**7703 Perry Highway, Ross Township, Pittsburgh,
Allegheny County, Pennsylvania, United States,**



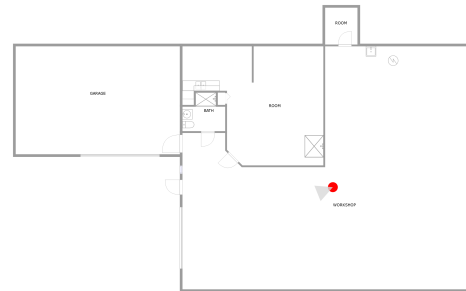
WORKSHOP (1)

Floor 1 / 2139 sq. ft



WORKSHOP (1)

Floor 1 / 2139 sq. ft



Scan captured on Thu, 20 Jun 2024 22:09:14 GMT

Information is calculated by CubiCasa technology; deemed highly reliable but not guaranteed.

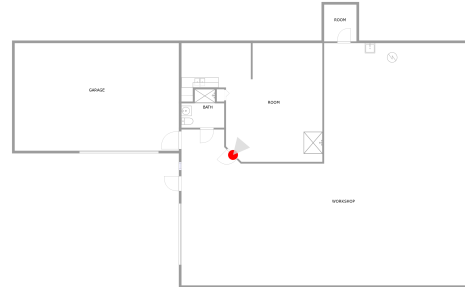
Photo Report

**7703 Perry Highway, Ross Township, Pittsburgh,
Allegheny County, Pennsylvania, United States,**



ROOM (2)

Floor 1 / 527 sq. ft



GARAGE (3)

Floor 1 / 695 sq. ft

