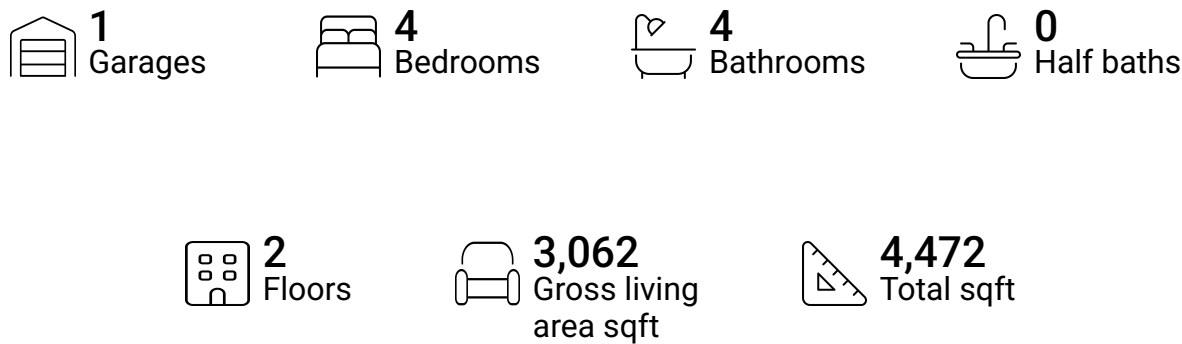


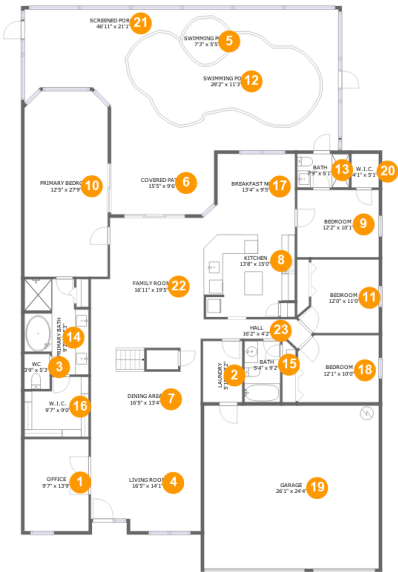
434 Arch Ridge Loop, Seffner, Hillsborough County,
Florida, United States, 33584



Property summary



434 Arch Ridge Loop, Seffner, Hillsborough County,
Florida, United States, 33584



Room dimensions

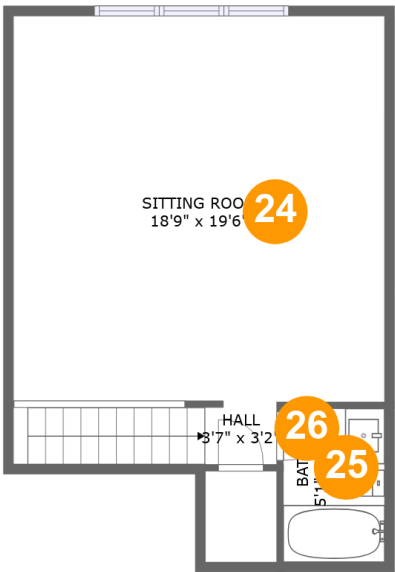
Floor 1 Total sqft: 3956 Living area: 2546

#		Dimensions	sqft	Counted as living area
1	Office	9'7" x 13'9"	132 sq. ft	Yes
2	Laundry	5'10" x 9'2"	54 sq. ft	Yes
3	WC	3'9" x 5'3"	20 sq. ft	Yes
4	Living Room	16'5" x 14'1"	220 sq. ft	Yes
5	Swimming Pool	7'3" x 5'5"	37 sq. ft	No
6	Covered Patio	15'5" x 9'6"	145 sq. ft	No
7	Dining Area	16'5" x 13'4"	200 sq. ft	Yes
8	Kitchen	13'8" x 15'0"	196 sq. ft	Yes
9	Bedroom	12'2" x 10'1"	123 sq. ft	Yes
10	Primary Bedroom	12'5" x 27'9"	340 sq. ft	Yes
11	Bedroom	12'0" x 11'0"	115 sq. ft	Yes

**434 Arch Ridge Loop, Seffner, Hillsborough County,
Florida, United States, 33584**

#		Dimensions	sqft	Counted as living area
12	Swimming Pool	28'2" x 11'3"	277 sq. ft	No
13	Bath	7'9" x 5'1"	39 sq. ft	Yes
14	Primary Bath	9'7" x 14'3"	112 sq. ft	Yes
15	Bath	5'4" x 9'2"	49 sq. ft	Yes
16	W.I.C.	9'7" x 9'0"	77 sq. ft	Yes
17	Breakfast Nook	13'4" x 9'5"	111 sq. ft	Yes
18	Bedroom	12'1" x 10'0"	118 sq. ft	Yes
19	Garage	26'1" x 24'4"	636 sq. ft	No
20	W.I.C.	4'1" x 5'1"	21 sq. ft	Yes
21	Screened Porch	46'11" x 21'1"	874 sq. ft	No
22	Family Room	16'11" x 19'5"	301 sq. ft	Yes
23	Hall	16'2" x 4'2"	47 sq. ft	Yes

434 Arch Ridge Loop, Seffner, Hillsborough County,
Florida, United States, 33584



Room dimensions

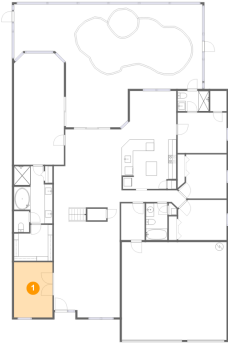
Floor 2

Total sqft: 516 Living area: 516

#		Dimensions	sqft	Counted as living area
24	Sitting Room	18'9" x 19'6"	365 sq. ft	Yes
25	Bath	5'1" x 7'9"	40 sq. ft	Yes
26	Hall	3'7" x 3'2"	42 sq. ft	Yes

**434 Arch Ridge Loop, Seffner, Hillsborough County,
Florida, United States, 33584**

1 Floor 1 - Office



Dimensions: 9'7" x 13'9"
Area: 132 sq. ft
Counted as living area: Yes

Heated: Yes
Finished: Yes
Enclosed: Yes
Contiguous: Yes
Permitted: Yes
Wet space: No
Addition: No
Conversion: No

2 Floor 1 - Laundry

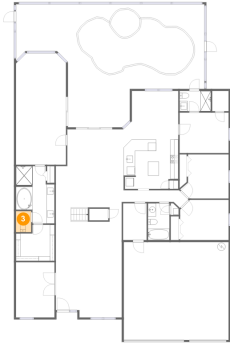


Dimensions: 5'10" x 9'2"
Area: 54 sq. ft
Counted as living area: Yes

Heated: Yes
Finished: Yes
Enclosed: Yes
Contiguous: Yes
Permitted: Yes
Wet space: No
Addition: No
Conversion: No

**434 Arch Ridge Loop, Seffner, Hillsborough County,
Florida, United States, 33584**

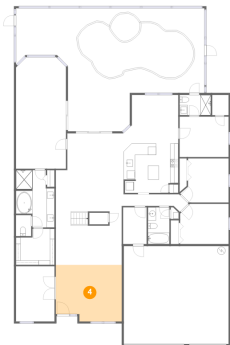
3 Floor 1 - WC



Dimensions: 3'9" x 5'3"
Area: 20 sq. ft
Counted as living area: Yes

Heated: Yes
Finished: Yes
Enclosed: Yes
Contiguous: Yes
Permitted: Yes
Wet space: Yes
Addition: No
Conversion: No

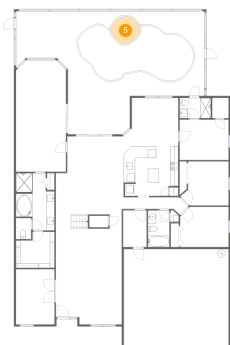
4 Floor 1 - Living Room



Dimensions: 16'5" x 14'1"
Area: 220 sq. ft
Counted as living area: Yes

Heated: Yes
Finished: Yes
Enclosed: Yes
Contiguous: Yes
Permitted: Yes
Wet space: No
Addition: No
Conversion: No

5 Floor 1 - Swimming Pool

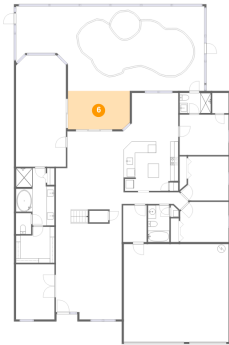


Dimensions: 7'3" x 5'5"
Area: 37 sq. ft
Counted as living area: No

Heated: No
Finished: No
Enclosed: No
Contiguous: Yes
Permitted: No
Wet space: No
Addition: No
Conversion: No

**434 Arch Ridge Loop, Seffner, Hillsborough County,
Florida, United States, 33584**

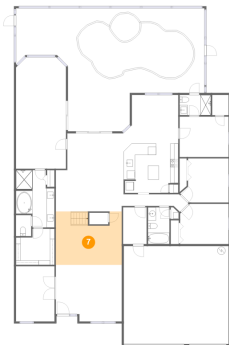
6 Floor 1 - Covered Patio



Dimensions: 15'5" x 9'6"
Area: 145 sq. ft
Counted as living area: No

Heated: No
Finished: Yes
Enclosed: No
Contiguous: Yes
Permitted: Yes
Wet space: No
Addition: No
Conversion: No

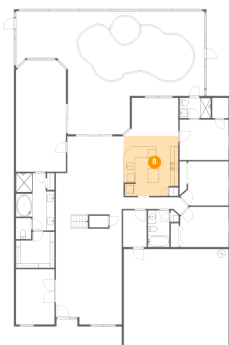
7 Floor 1 - Dining Area



Dimensions: 16'5" x 13'4"
Area: 200 sq. ft
Counted as living area: Yes

Heated: Yes
Finished: Yes
Enclosed: Yes
Contiguous: Yes
Permitted: Yes
Wet space: No
Addition: No
Conversion: No

8 Floor 1 - Kitchen

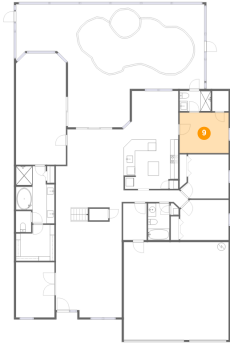


Dimensions: 13'8" x 15'0"
Area: 196 sq. ft
Counted as living area: Yes

Heated: Yes
Finished: Yes
Enclosed: Yes
Contiguous: Yes
Permitted: Yes
Wet space: No
Addition: No
Conversion: No

**434 Arch Ridge Loop, Seffner, Hillsborough County,
Florida, United States, 33584**

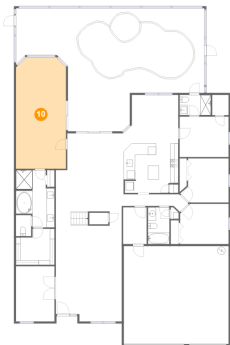
9 Floor 1 - Bedroom



Dimensions: 12'2" x 10'1"
Area: 123 sq. ft
Counted as living area: Yes

Heated: Yes
Finished: Yes
Enclosed: Yes
Contiguous: Yes
Permitted: Yes
Wet space: No
Addition: No
Conversion: No

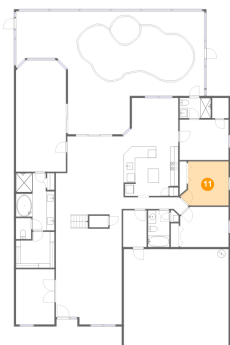
10 Floor 1 - Primary Bedroom



Dimensions: 12'5" x 27'9"
Area: 340 sq. ft
Counted as living area: Yes

Heated: Yes
Finished: Yes
Enclosed: Yes
Contiguous: Yes
Permitted: Yes
Wet space: No
Addition: No
Conversion: No

11 Floor 1 - Bedroom

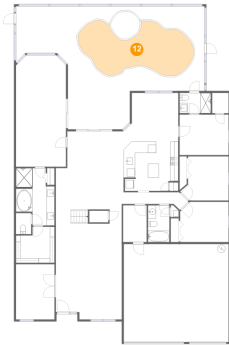


Dimensions: 12'0" x 11'0"
Area: 115 sq. ft
Counted as living area: Yes

Heated: Yes
Finished: Yes
Enclosed: Yes
Contiguous: Yes
Permitted: Yes
Wet space: No
Addition: No
Conversion: No

**434 Arch Ridge Loop, Seffner, Hillsborough County,
Florida, United States, 33584**

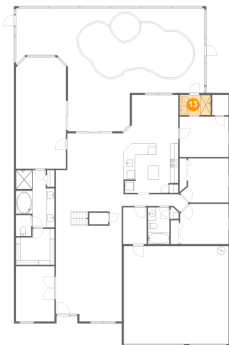
12 Floor 1 - Swimming Pool



Dimensions: 28'2" x 11'3"
Area: 277 sq. ft
Counted as living area: No

Heated: No
Finished: No
Enclosed: No
Contiguous: Yes
Permitted: No
Wet space: No
Addition: No
Conversion: No

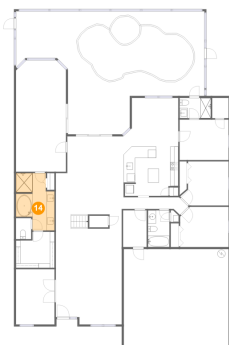
13 Floor 1 - Bath



Dimensions: 7'9" x 5'1"
Area: 39 sq. ft
Counted as living area: Yes

Heated: Yes
Finished: Yes
Enclosed: Yes
Contiguous: Yes
Permitted: Yes
Wet space: Yes
Addition: No
Conversion: No

14 Floor 1 - Primary Bath

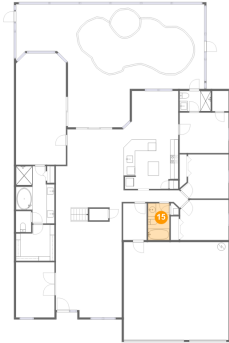


Dimensions: 9'7" x 14'3"
Area: 112 sq. ft
Counted as living area: Yes

Heated: Yes
Finished: Yes
Enclosed: Yes
Contiguous: Yes
Permitted: Yes
Wet space: Yes
Addition: No
Conversion: No

**434 Arch Ridge Loop, Seffner, Hillsborough County,
Florida, United States, 33584**

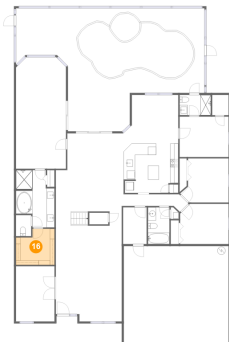
15 Floor 1 - Bath



Dimensions: 5'4" x 9'2"
Area: 49 sq. ft
Counted as living area: Yes

Heated: Yes
Finished: Yes
Enclosed: Yes
Contiguous: Yes
Permitted: Yes
Wet space: Yes
Addition: No
Conversion: No

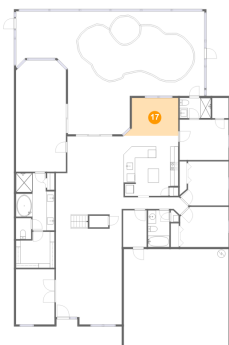
16 Floor 1 - W.I.C.



Dimensions: 9'7" x 9'0"
Area: 77 sq. ft
Counted as living area: Yes

Heated: Yes
Finished: Yes
Enclosed: Yes
Contiguous: Yes
Permitted: Yes
Wet space: No
Addition: No
Conversion: No

17 Floor 1 - Breakfast Nook



Dimensions: 13'4" x 9'5"
Area: 111 sq. ft
Counted as living area: Yes

Heated: Yes
Finished: Yes
Enclosed: Yes
Contiguous: Yes
Permitted: Yes
Wet space: No
Addition: No
Conversion: No

**434 Arch Ridge Loop, Seffner, Hillsborough County,
Florida, United States, 33584**

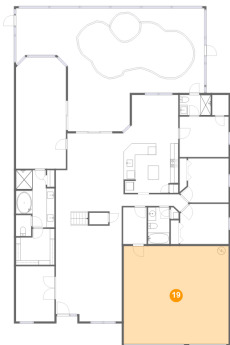
18 Floor 1 - Bedroom



Dimensions: 12'1" x 10'0"
Area: 118 sq. ft
Counted as living area: Yes

Heated: Yes
Finished: Yes
Enclosed: Yes
Contiguous: Yes
Permitted: Yes
Wet space: No
Addition: No
Conversion: No

19 Floor 1 - Garage



Dimensions: 26'1" x 24'4"
Area: 636 sq. ft
Counted as living area: No

Heated: No
Finished: No
Enclosed: Yes
Contiguous: Yes
Permitted: Yes
Wet space: No
Addition: No
Conversion: No

20 Floor 1 - W.I.C.

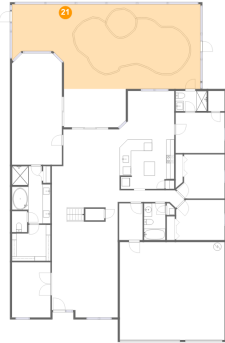


Dimensions: 4'1" x 5'1"
Area: 21 sq. ft
Counted as living area: Yes

Heated: Yes
Finished: Yes
Enclosed: Yes
Contiguous: Yes
Permitted: Yes
Wet space: No
Addition: No
Conversion: No

**434 Arch Ridge Loop, Seffner, Hillsborough County,
Florida, United States, 33584**

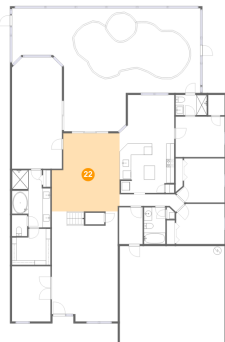
21 Floor 1 - Screened Porch



Dimensions: 46'11" x 21'1"
Area: 874 sq. ft
Counted as living area: No

Heated: No
Finished: Yes
Enclosed: No
Contiguous: Yes
Permitted: Yes
Wet space: No
Addition: No
Conversion: No

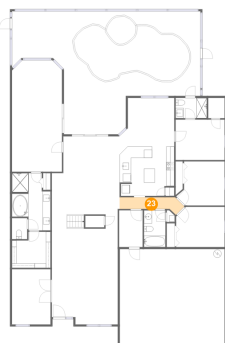
22 Floor 1 - Family Room



Dimensions: 16'11" x 19'5"
Area: 301 sq. ft
Counted as living area: Yes

Heated: Yes
Finished: Yes
Enclosed: Yes
Contiguous: Yes
Permitted: Yes
Wet space: No
Addition: No
Conversion: No

23 Floor 1 - Hall

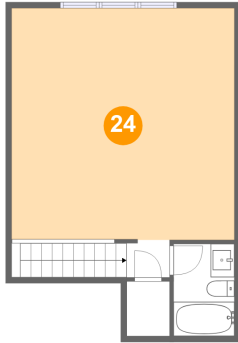


Dimensions: 16'2" x 4'2"
Area: 47 sq. ft
Counted as living area: Yes

Heated: Yes
Finished: Yes
Enclosed: Yes
Contiguous: Yes
Permitted: Yes
Wet space: No
Addition: No
Conversion: No

434 Arch Ridge Loop, Seffner, Hillsborough County,
Florida, United States, 33584

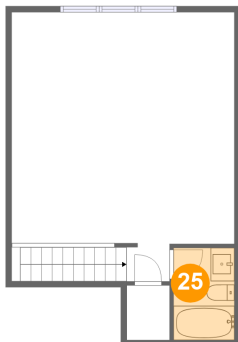
24 Floor 2 - Sitting Room



Dimensions: 18'9" x 19'6"
Area: 365 sq. ft
Counted as living area: Yes

Heated: Yes
Finished: Yes
Enclosed: Yes
Contiguous: Yes
Permitted: Yes
Wet space: No
Addition: No
Conversion: No

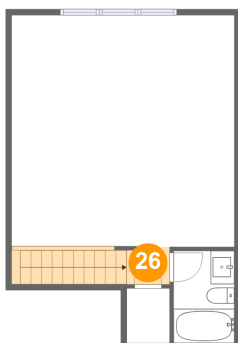
25 Floor 2 - Bath



Dimensions: 5'1" x 7'9"
Area: 40 sq. ft
Counted as living area: Yes

Heated: Yes
Finished: Yes
Enclosed: Yes
Contiguous: Yes
Permitted: Yes
Wet space: Yes
Addition: No
Conversion: No

26 Floor 2 - Hall



Dimensions: 3'7" x 3'2"
Area: 42 sq. ft
Counted as living area: Yes

Heated: Yes
Finished: Yes
Enclosed: Yes
Contiguous: Yes
Permitted: Yes
Wet space: No
Addition: No
Conversion: No