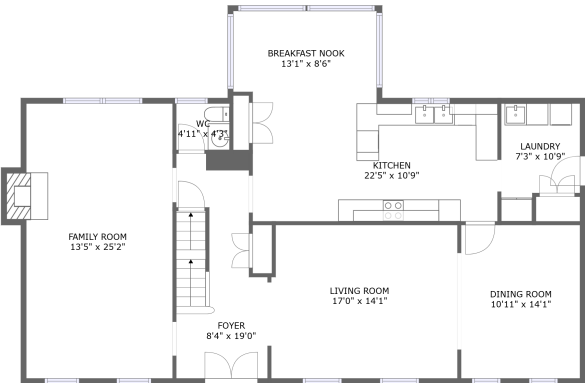
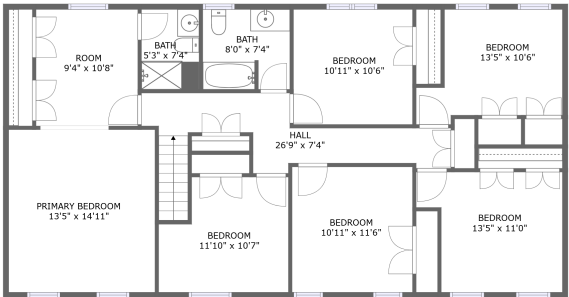


Home report

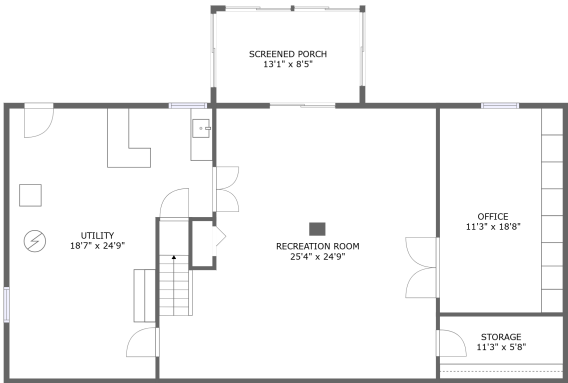
302 Notley Court, Cloverly, Silver Spring, Montgomery County, Maryland, United States, 20905



FLOOR 2



FLOOR 3



FLOOR 1

Total Area: 3508 sq. ft

Below Ground: 806 sq. ft, Floor 2: 1389 sq. ft, Floor 3: 1313 sq. ft

Excluded: Storage 64 sq. ft, Utility 383 sq. ft, Outdoor Porch Screen 110 sq. ft, Fireplace 9 sq. ft, Walls: 250 sq. ft

Property summary

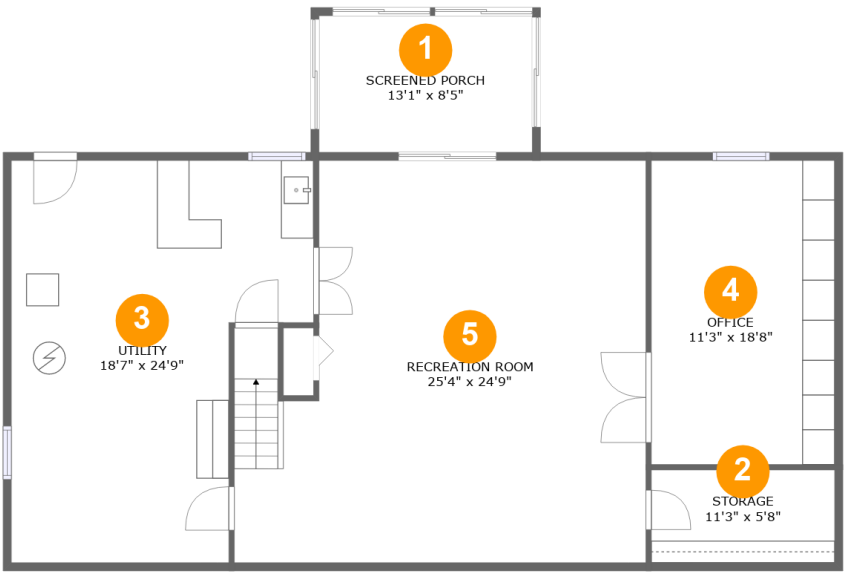
 **3** Floors

 **6** Bedrooms

 **2** Bathrooms

 **1** Half baths

302 Notley Court, Cloverly, Silver Spring, Montgomery County,  
Maryland, United States, 20905

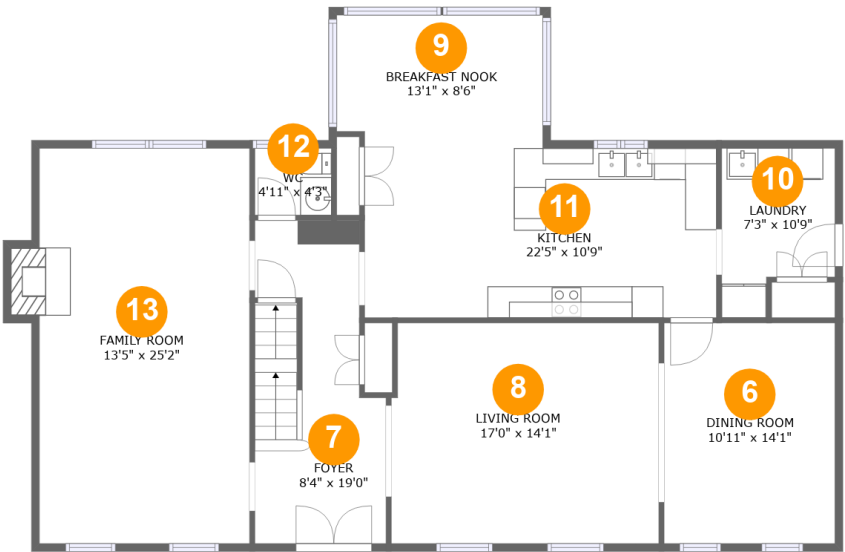


Room dimensions

Floor 1 Below ground Total:806sqft    Excluded: 557sqft

#		Max Dimensions	sqft	Included
1	Screened Porch	13'1" x 8'5"	110 sq. ft	No
2	Storage	11'3" x 5'8"	64 sq. ft	No
3	Utility	18'7" x 24'9"	383 sq. ft	No
4	Office	11'3" x 18'8"	211 sq. ft	Yes
5	Recreation Room	25'4" x 24'9"	561 sq. ft	Yes

302 Notley Court, Cloverly, Silver Spring, Montgomery County, Maryland, United States, 20905

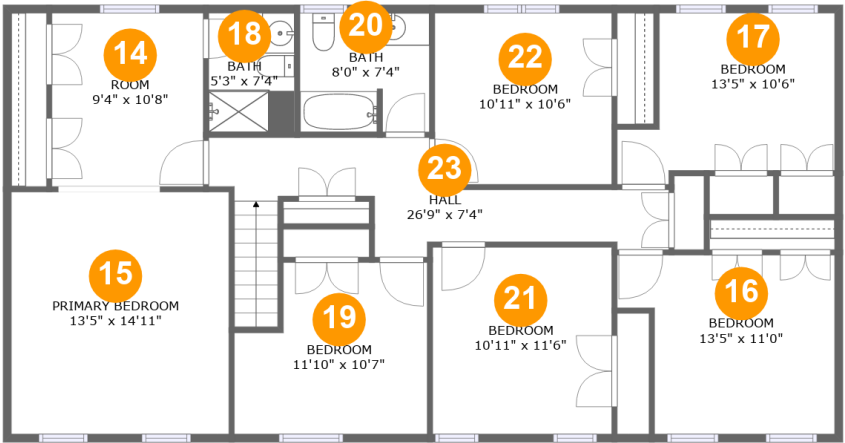


Room dimensions

Floor 2 Total:1389sqft   Excluded: 9sqft

#		Max Dimensions	sqft	Included
6	Dining Room	10'11" x 14'1"	153 sq. ft	Yes
7	Foyer	8'4" x 19'0"	150 sq. ft	Yes
8	Living Room	17'0" x 14'1"	237 sq. ft	Yes
9	Breakfast Nook	13'1" x 8'6"	109 sq. ft	Yes
10	Laundry	7'3" x 10'9"	66 sq. ft	Yes
11	Kitchen	22'5" x 10'9"	241 sq. ft	Yes
12	WC	4'11" x 4'3"	21 sq. ft	Yes
13	Family Room	13'5" x 25'2"	344 sq. ft	Yes

302 Notley Court, Cloverly, Silver Spring, Montgomery County, Maryland, United States, 20905



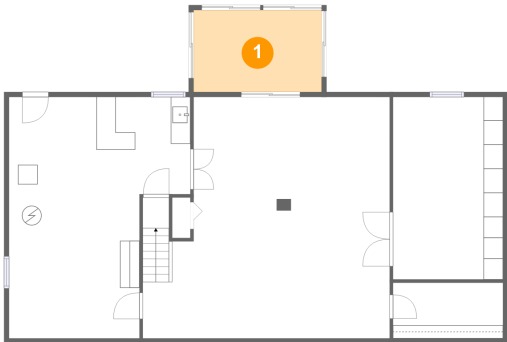
Room dimensions

Floor 3 Total:1313sqft   Excluded: 0sqft

#		Max Dimensions	sqft	Included
14	Room	9'4" x 10'8"	99 sq. ft	Yes
15	Primary Bedroom	13'5" x 14'11"	199 sq. ft	Yes
16	Bedroom	13'5" x 11'0"	129 sq. ft	Yes
17	Bedroom	13'5" x 10'6"	114 sq. ft	Yes
18	Bath	5'3" x 7'4"	39 sq. ft	Yes
19	Bedroom	11'10" x 10'7"	112 sq. ft	Yes
20	Bath	8'0" x 7'4"	57 sq. ft	Yes
21	Bedroom	10'11" x 11'6"	127 sq. ft	Yes
22	Bedroom	10'11" x 10'6"	115 sq. ft	Yes
23	Hall	26'9" x 7'4"	131 sq. ft	Yes

302 Notley Court, Cloverly, Silver Spring, Montgomery County,  
Maryland, United States, 20905

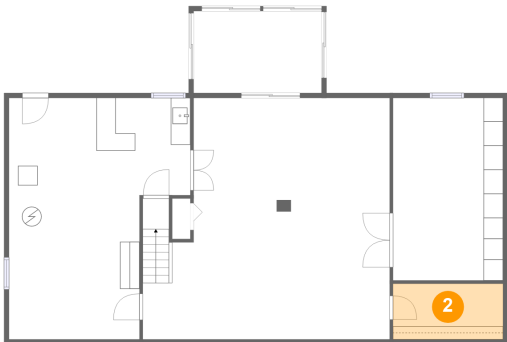
1 Floor 1 - Screened Porch



Max Dimensions: 13'1" x 8'5"  
Calculated Area: 110 sq. ft  
Included: No

Heated: No  
Finished: Yes  
Enclosed: No  
Contiguous: Yes  
Permitted: Yes  
Wet space: No  
Addition: No  
Conversion: No

2 Floor 1 - Storage

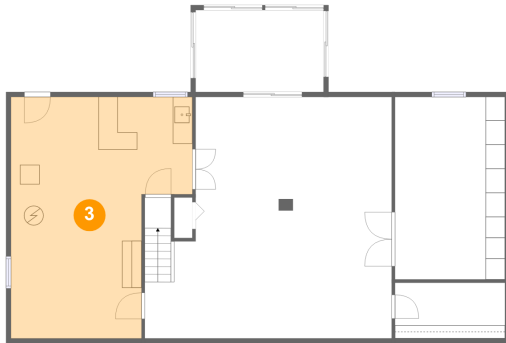


Max Dimensions: 11'3" x 5'8"  
Calculated Area: 64 sq. ft  
Included: No

Heated: No  
Finished: No  
Enclosed: No  
Contiguous: Yes  
Permitted: Yes  
Wet space: No  
Addition: No  
Conversion: No

302 Notley Court, Cloverly, Silver Spring, Montgomery County,  
Maryland, United States, 20905

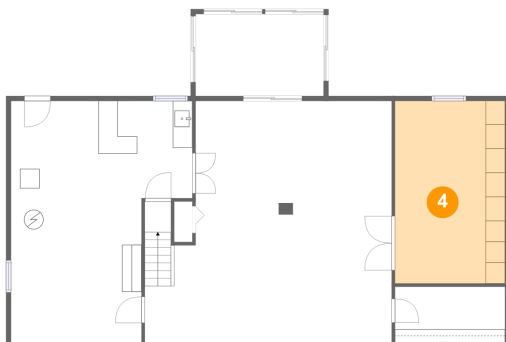
### 3 Floor 1 - Utility



Max Dimensions: 18'7" x 24'9"  
Calculated Area: 383 sq. ft  
Included: No

Heated: Yes  
Finished: No  
Enclosed: Yes  
Contiguous: Yes  
Permitted: Yes  
Wet space: No  
Addition: No  
Conversion: No

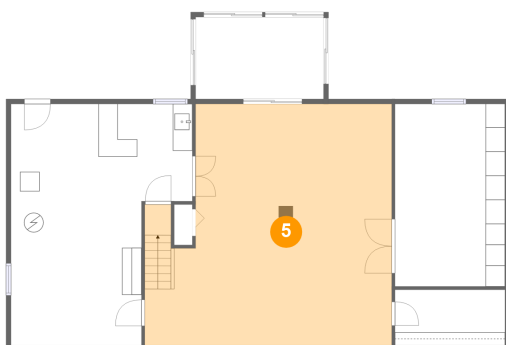
### 4 Floor 1 - Office



Max Dimensions: 11'3" x 18'8"  
Calculated Area: 211 sq. ft  
Included: Yes

Heated: Yes  
Finished: Yes  
Enclosed: Yes  
Contiguous: Yes  
Permitted: Yes  
Wet space: No  
Addition: No  
Conversion: No

### 5 Floor 1 - Recreation Room

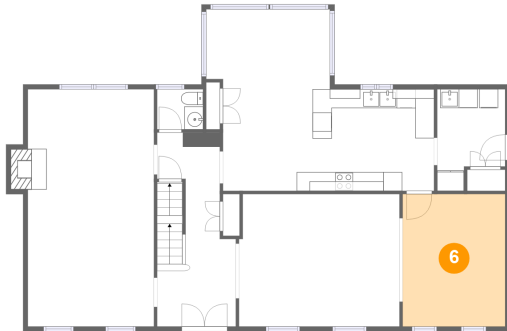


Max Dimensions: 25'4" x 24'9"  
Calculated Area: 561 sq. ft  
Included: Yes

Heated: Yes  
Finished: Yes  
Enclosed: Yes  
Contiguous: Yes  
Permitted: Yes  
Wet space: No  
Addition: No  
Conversion: No

302 Notley Court, Cloverly, Silver Spring, Montgomery County,  
Maryland, United States, 20905

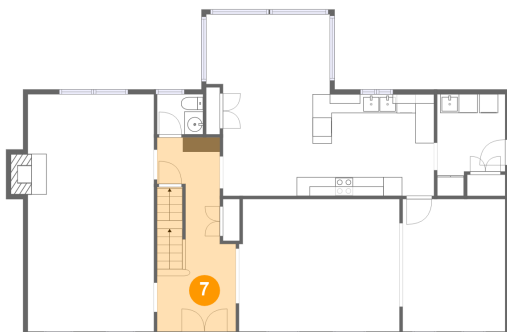
## 6 Floor 2 - Dining Room



Max Dimensions: 10'11" x 14'1"  
Calculated Area: 153 sq. ft  
Included: Yes

Heated: Yes  
Finished: Yes  
Enclosed: Yes  
Contiguous: Yes  
Permitted: Yes  
Wet space: No  
Addition: No  
Conversion: No

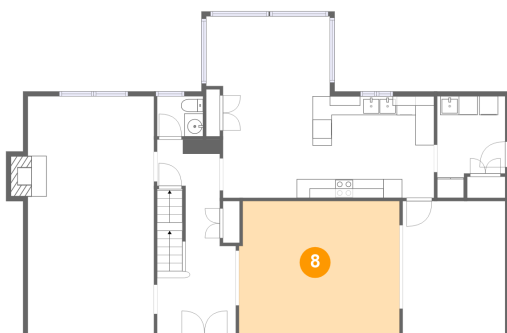
## 7 Floor 2 - Foyer



Max Dimensions: 8'4" x 19'0"  
Calculated Area: 150 sq. ft  
Included: Yes

Heated: Yes  
Finished: Yes  
Enclosed: Yes  
Contiguous: Yes  
Permitted: Yes  
Wet space: No  
Addition: No  
Conversion: No

## 8 Floor 2 - Living Room

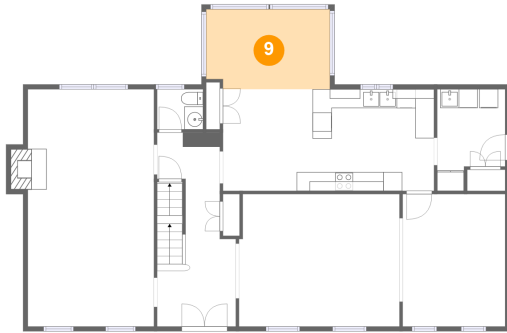


Max Dimensions: 17'0" x 14'1"  
Calculated Area: 237 sq. ft  
Included: Yes

Heated: Yes  
Finished: Yes  
Enclosed: Yes  
Contiguous: Yes  
Permitted: Yes  
Wet space: No  
Addition: No  
Conversion: No

302 Notley Court, Cloverly, Silver Spring, Montgomery County,  
Maryland, United States, 20905

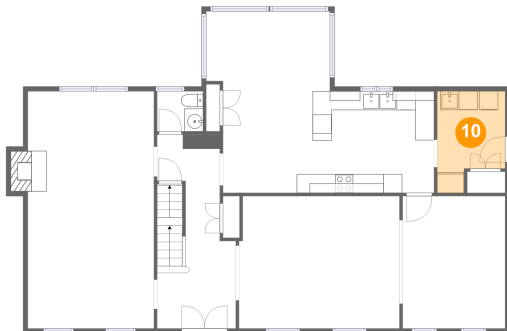
## 9 Floor 2 - Breakfast Nook



Max Dimensions: 13'1" x 8'6"  
Calculated Area: 109 sq. ft  
Included: Yes

Heated: Yes  
Finished: Yes  
Enclosed: Yes  
Contiguous: Yes  
Permitted: Yes  
Wet space: No  
Addition: No  
Conversion: No

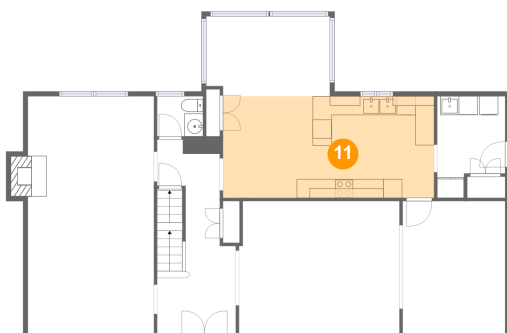
## 10 Floor 2 - Laundry



Max Dimensions: 7'3" x 10'9"  
Calculated Area: 66 sq. ft  
Included: Yes

Heated: Yes  
Finished: Yes  
Enclosed: Yes  
Contiguous: Yes  
Permitted: Yes  
Wet space: No  
Addition: No  
Conversion: No

## 11 Floor 2 - Kitchen



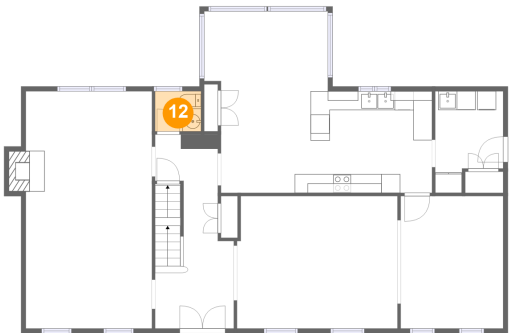
Max Dimensions: 22'5" x 10'9"  
Calculated Area: 241 sq. ft  
Included: Yes

Heated: Yes  
Finished: Yes  
Enclosed: Yes  
Contiguous: Yes  
Permitted: Yes  
Wet space: No  
Addition: No  
Conversion: No



302 Notley Court, Cloverly, Silver Spring, Montgomery County,  
Maryland, United States, 20905

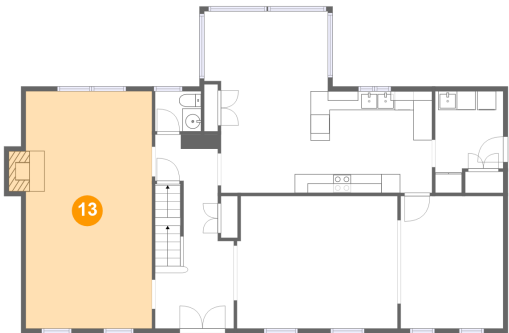
12 Floor 2 - WC



Max Dimensions: 4'11" x 4'3"  
Calculated Area: 21 sq. ft  
Included: Yes

Heated: Yes  
Finished: Yes  
Enclosed: Yes  
Contiguous: Yes  
Permitted: Yes  
Wet space: Yes  
Addition: No  
Conversion: No

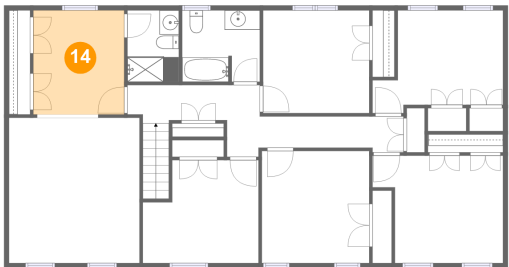
13 Floor 2 - Family Room



Max Dimensions: 13'5" x 25'2"  
Calculated Area: 344 sq. ft  
Included: Yes

Heated: Yes  
Finished: Yes  
Enclosed: Yes  
Contiguous: Yes  
Permitted: Yes  
Wet space: No  
Addition: No  
Conversion: No

14 Floor 3 - Room

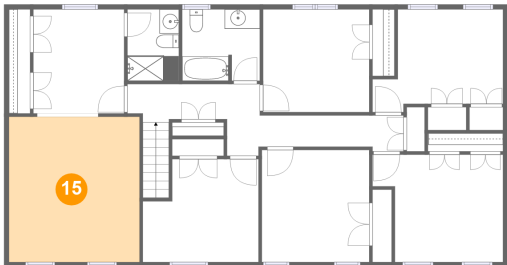


Max Dimensions: 9'4" x 10'8"  
Calculated Area: 99 sq. ft  
Included: Yes

Heated: Yes  
Finished: Yes  
Enclosed: Yes  
Contiguous: Yes  
Permitted: Yes  
Wet space: No  
Addition: No  
Conversion: No

302 Notley Court, Cloverly, Silver Spring, Montgomery County,  
Maryland, United States, 20905

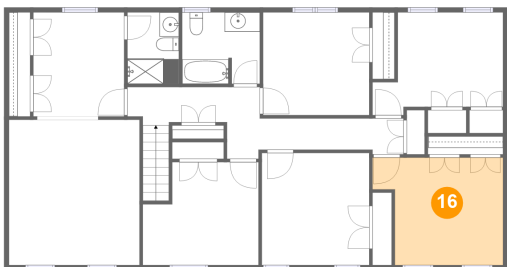
15 Floor 3 - Primary Bedroom



Max Dimensions: 13'5" x 14'11"  
Calculated Area: 199 sq. ft  
Included: Yes

Heated: Yes  
Finished: Yes  
Enclosed: Yes  
Contiguous: Yes  
Permitted: Yes  
Wet space: No  
Addition: No  
Conversion: No

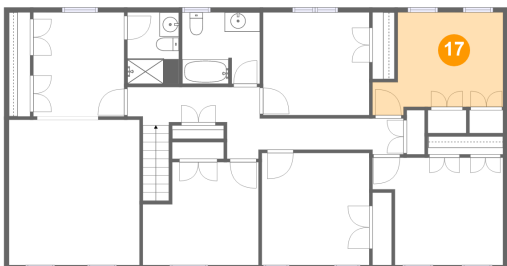
16 Floor 3 - Bedroom



Max Dimensions: 13'5" x 11'0"  
Calculated Area: 129 sq. ft  
Included: Yes

Heated: Yes  
Finished: Yes  
Enclosed: Yes  
Contiguous: Yes  
Permitted: Yes  
Wet space: No  
Addition: No  
Conversion: No

17 Floor 3 - Bedroom

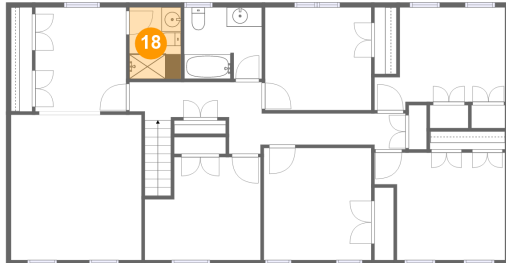


Max Dimensions: 13'5" x 10'6"  
Calculated Area: 114 sq. ft  
Included: Yes

Heated: Yes  
Finished: Yes  
Enclosed: Yes  
Contiguous: Yes  
Permitted: Yes  
Wet space: No  
Addition: No  
Conversion: No

302 Notley Court, Cloverly, Silver Spring, Montgomery County,  
Maryland, United States, 20905

### 18 Floor 3 - Bath



Max Dimensions: 5'3" x 7'4"  
Calculated Area: 39 sq. ft  
Included: Yes

Heated: Yes  
Finished: Yes  
Enclosed: Yes  
Contiguous: Yes  
Permitted: Yes  
Wet space: Yes  
Addition: No  
Conversion: No

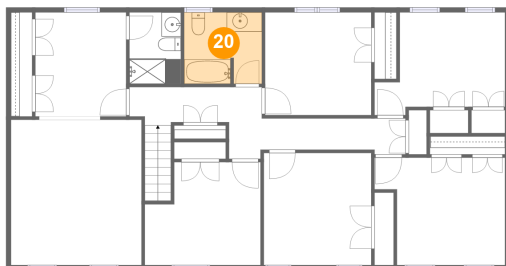
### 19 Floor 3 - Bedroom



Max Dimensions: 11'10" x 10'7"  
Calculated Area: 112 sq. ft  
Included: Yes

Heated: Yes  
Finished: Yes  
Enclosed: Yes  
Contiguous: Yes  
Permitted: Yes  
Wet space: No  
Addition: No  
Conversion: No

### 20 Floor 3 - Bath



Max Dimensions: 8'0" x 7'4"  
Calculated Area: 57 sq. ft  
Included: Yes

Heated: Yes  
Finished: Yes  
Enclosed: Yes  
Contiguous: Yes  
Permitted: Yes  
Wet space: Yes  
Addition: No  
Conversion: No

302 Notley Court, Cloverly, Silver Spring, Montgomery County,  
Maryland, United States, 20905

**21** Floor 3 - Bedroom



Max Dimensions: 10'11" x 11'6"  
Calculated Area: 127 sq. ft  
Included: Yes

Heated: Yes  
Finished: Yes  
Enclosed: Yes  
Contiguous: Yes  
Permitted: Yes  
Wet space: No  
Addition: No  
Conversion: No

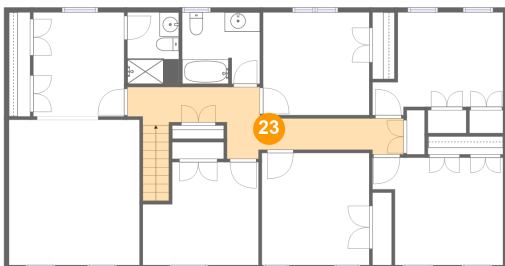
**22** Floor 3 - Bedroom



Max Dimensions: 10'11" x 10'6"  
Calculated Area: 115 sq. ft  
Included: Yes

Heated: Yes  
Finished: Yes  
Enclosed: Yes  
Contiguous: Yes  
Permitted: Yes  
Wet space: No  
Addition: No  
Conversion: No

**23** Floor 3 - Hall



Max Dimensions: 26'9" x 7'4"  
Calculated Area: 131 sq. ft  
Included: Yes

Heated: Yes  
Finished: Yes  
Enclosed: Yes  
Contiguous: Yes  
Permitted: Yes  
Wet space: No  
Addition: No  
Conversion: No