

# Home data report

## 1000 Verla Wy, Greenback, TN, US



**Total Area: 4043 sq. ft**

Below Ground: 1388 sq. ft, Floor 2: 1955 sq. ft, Floor 3: 700 sq. ft

Excluded: Utility 77 sq. ft, Deck 656 sq. ft, Fireplace 22 sq. ft, Open to below 661 sq. ft, Low ceiling 104 sq. ft, Walls: 274 sq. ft

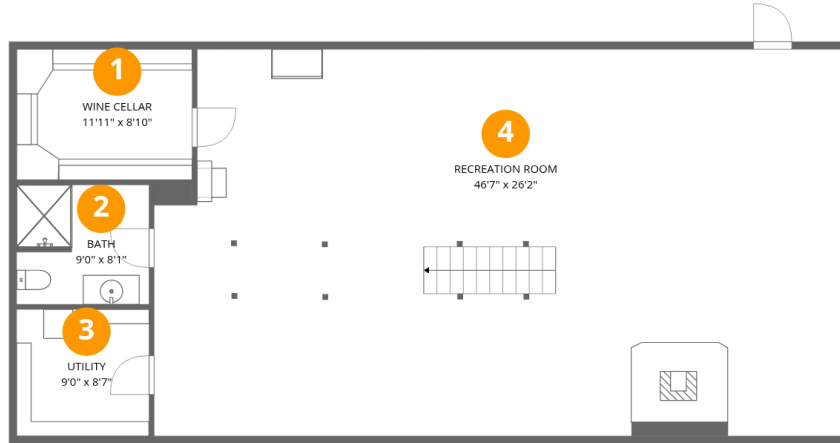
### Property summary

**3** Floors

**3** Bedrooms

**3** Bathrooms

**1** Half baths

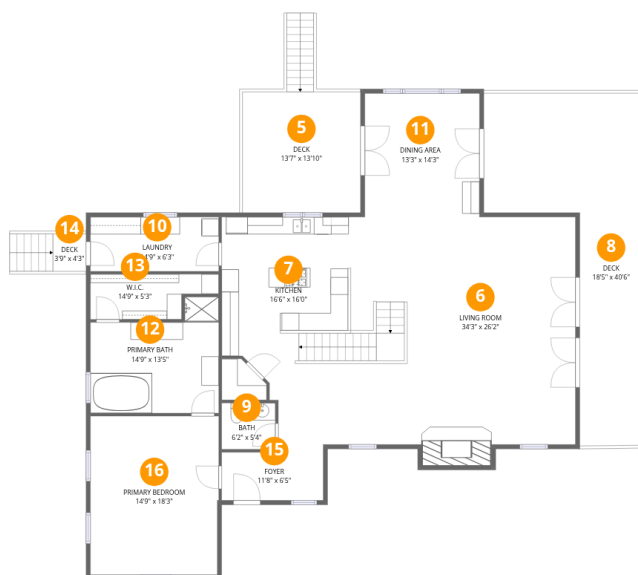


## Room dimensions

Floor 1 Below grade

Total:1388sqft Excluded: 77sqft

#		Dimensions	sqft	Counted as living area
1	Wine Cellar	11'11" x 8'10"	105 sq. ft	Yes
2	Bath	9'0" x 8'1"	72 sq. ft	Yes
3	Utility	9'0" x 8'7"	77 sq. ft	No
4	Recreation Room	46'7" x 26'2"	1190 sq. ft	Yes



## Room dimensions

Floor 2

Total: 1955 sqft

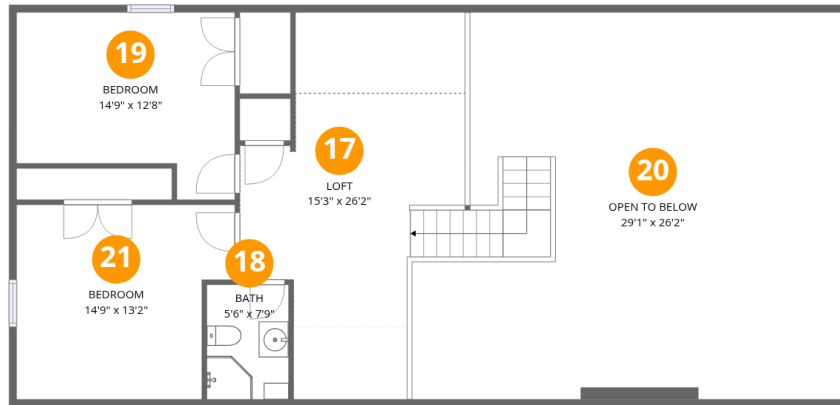
Excluded: 678 sqft

#		Dimensions	sqft	Counted as living area
5	Deck	13'7" x 13'10"	189 sq. ft	No
6	Living Room	34'3" x 26'2"	767 sq. ft	Yes
7	Kitchen	16'6" x 16'0"	264 sq. ft	Yes
8	Deck	18'5" x 40'6"	450 sq. ft	No
9	Bath	6'2" x 5'4"	33 sq. ft	Yes
10	Laundry	14'9" x 6'3"	93 sq. ft	Yes
11	Dining Area	13'3" x 14'3"	188 sq. ft	Yes
12	Primary Bath	14'9" x 13'5"	166 sq. ft	Yes
13	W.I.C.	14'9" x 5'3"	64 sq. ft	Yes
14	Deck	3'9" x 4'3"	17 sq. ft	No
15	Foyer	11'8" x 6'5"	69 sq. ft	Yes

Home data report

## 1000 Verla Wy,Greenback,TN,US

#		Dimensions	sqft	Counted as living area
16	Primary Bedroom	14'9" x 18'3"	269 sq. ft	Yes



## Room dimensions

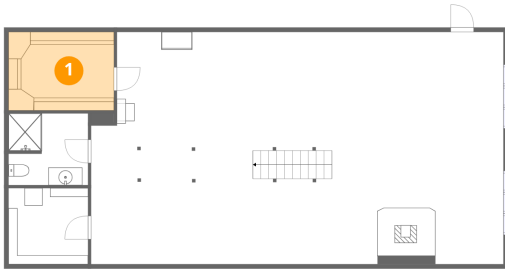
Floor 3

Total:700sqft

Excluded: 765sqft

#		Dimensions	sqft	Counted as living area
17	Loft	15'3" x 26'2"	240 sq. ft	Yes
18	Bath	5'6" x 7'9"	43 sq. ft	Yes
19	Bedroom	14'9" x 12'8"	161 sq. ft	Yes
20	Open To Below	29'1" x 26'2"	661 sq. ft	No
21	Bedroom	14'9" x 13'2"	177 sq. ft	Yes

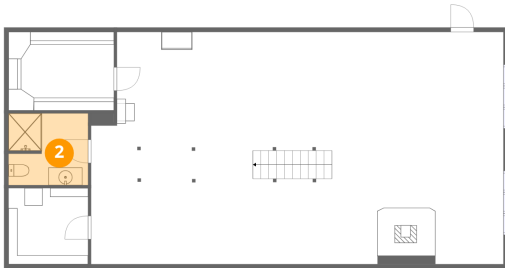
## 1 Floor 1 - Wine Cellar



Dimensions: 11'11" x 8'10"  
Area: 105 sq. ft  
Counted as living area: No

Heated: No  
Finished: Yes  
Enclosed: Yes  
Contiguous: Yes  
Permitted: Yes  
Wet space: No  
Addition: No  
Conversion: No

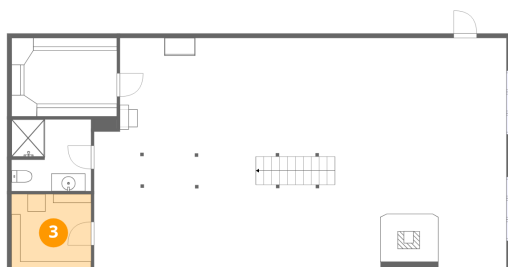
## 2 Floor 1 - Bath



Dimensions: 9'0" x 8'1"  
Area: 72 sq. ft  
Counted as living area: No

Heated: Yes  
Finished: Yes  
Enclosed: Yes  
Contiguous: No  
Permitted: Yes  
Wet space: Yes  
Addition: No  
Conversion: No

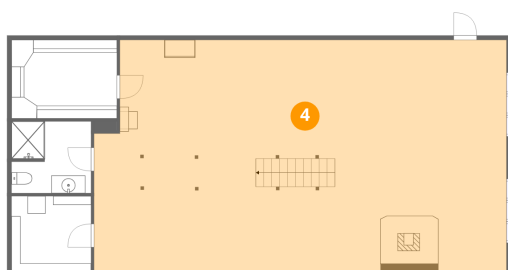
### 3 Floor 1 - Utility



Dimensions: 9'0" x 8'7"  
Area: 77 sq. ft  
Counted as living area: No

Heated: Yes  
Finished: No  
Enclosed: Yes  
Contiguous: Yes  
Permitted: Yes  
Wet space: No  
Addition: No  
Conversion: No

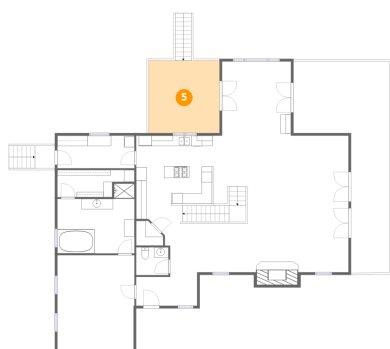
### 4 Floor 1 - Recreation Room



Dimensions: 46'7" x 26'2"  
Area: 1190 sq. ft  
Counted as living area: No

Heated: Yes  
Finished: Yes  
Enclosed: Yes  
Contiguous: No  
Permitted: Yes  
Wet space: No  
Addition: No  
Conversion: No

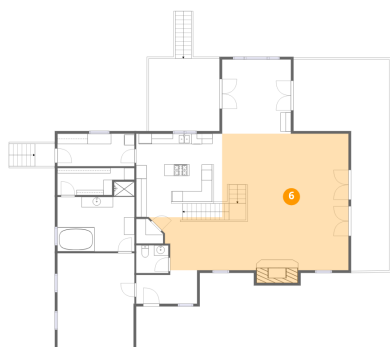
### 5 Floor 2 - Deck



Dimensions: 13'7" x 13'10"  
Area: 189 sq. ft  
Counted as living area: No

Heated: No  
Finished: No  
Enclosed: No  
Contiguous: Yes  
Permitted: Yes  
Wet space: No  
Addition: No  
Conversion: No

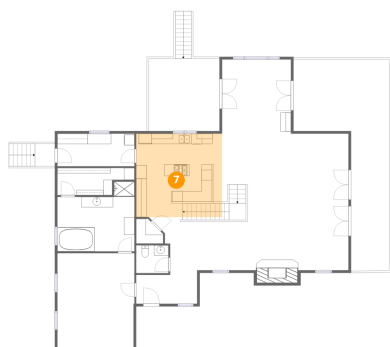
## 6 Floor 2 - Living Room



Dimensions: 34'3" x 26'2"  
Area: 767 sq. ft  
Counted as living area: Yes

Heated: Yes  
Finished: Yes  
Enclosed: Yes  
Contiguous: Yes  
Permitted: Yes  
Wet space: No  
Addition: No  
Conversion: No

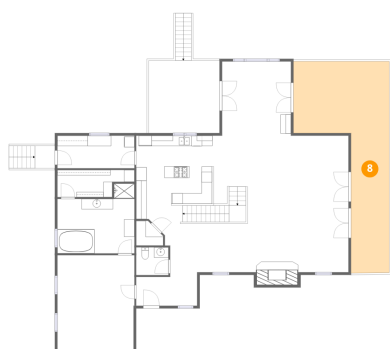
## 7 Floor 2 - Kitchen



Dimensions: 16'6" x 16'0"  
Area: 264 sq. ft  
Counted as living area: Yes

Heated: Yes  
Finished: Yes  
Enclosed: Yes  
Contiguous: Yes  
Permitted: Yes  
Wet space: No  
Addition: No  
Conversion: No

## 8 Floor 2 - Deck



Dimensions: 18'5" x 40'6"  
Area: 450 sq. ft  
Counted as living area: No

Heated: No  
Finished: No  
Enclosed: No  
Contiguous: Yes  
Permitted: Yes  
Wet space: No  
Addition: No  
Conversion: No

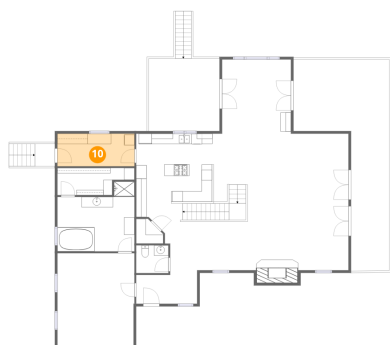
### 9 Floor 2 - Bath



Dimensions: 6'2" x 5'4"  
Area: 33 sq. ft  
Counted as living area: Yes

Heated: Yes  
Finished: Yes  
Enclosed: Yes  
Contiguous: Yes  
Permitted: Yes  
Wet space: Yes  
Addition: No  
Conversion: No

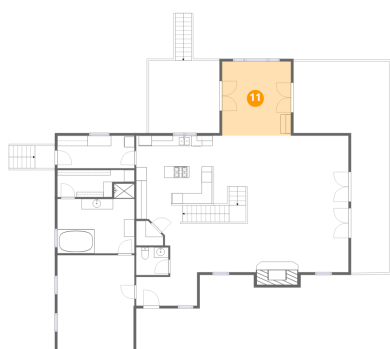
### 10 Floor 2 - Laundry



Dimensions: 14'9" x 6'3"  
Area: 93 sq. ft  
Counted as living area: Yes

Heated: Yes  
Finished: Yes  
Enclosed: Yes  
Contiguous: Yes  
Permitted: Yes  
Wet space: No  
Addition: No  
Conversion: No

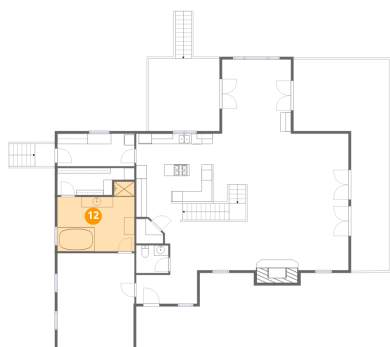
### 11 Floor 2 - Dining Area



Dimensions: 13'3" x 14'3"  
Area: 188 sq. ft  
Counted as living area: Yes

Heated: Yes  
Finished: Yes  
Enclosed: Yes  
Contiguous: Yes  
Permitted: Yes  
Wet space: No  
Addition: No  
Conversion: No

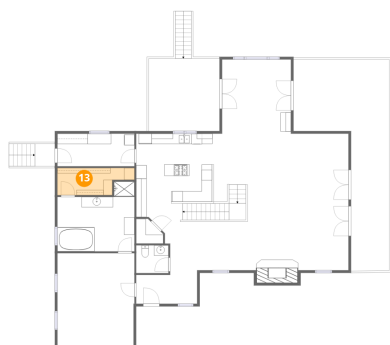
## 12 Floor 2 - Primary Bath



Dimensions: 14'9" x 13'5"  
Area: 166 sq. ft  
Counted as living area: Yes

Heated: Yes  
Finished: Yes  
Enclosed: Yes  
Contiguous: Yes  
Permitted: Yes  
Wet space: Yes  
Addition: No  
Conversion: No

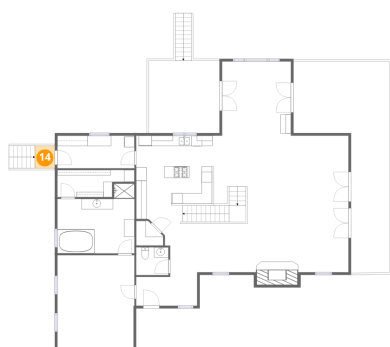
## 13 Floor 2 - W.I.C.



Dimensions: 14'9" x 5'3"  
Area: 64 sq. ft  
Counted as living area: Yes

Heated: Yes  
Finished: Yes  
Enclosed: Yes  
Contiguous: Yes  
Permitted: Yes  
Wet space: No  
Addition: No  
Conversion: No

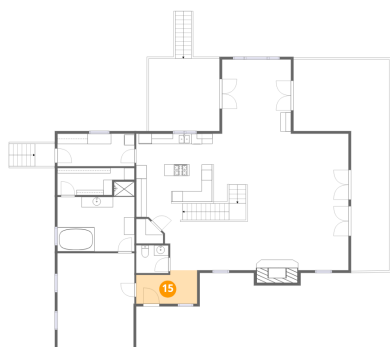
## 14 Floor 2 - Deck



Dimensions: 3'9" x 4'3"  
Area: 17 sq. ft  
Counted as living area: No

Heated: No  
Finished: No  
Enclosed: No  
Contiguous: Yes  
Permitted: Yes  
Wet space: No  
Addition: No  
Conversion: No

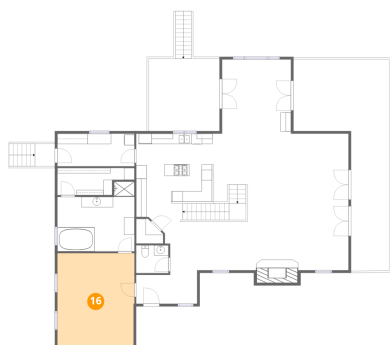
### 15 Floor 2 - Foyer



Dimensions: 11'8" x 6'5"  
Area: 69 sq. ft  
Counted as living area: Yes

Heated: Yes  
Finished: Yes  
Enclosed: Yes  
Contiguous: Yes  
Permitted: Yes  
Wet space: No  
Addition: No  
Conversion: No

### 16 Floor 2 - Primary Bedroom



Dimensions: 14'9" x 18'3"  
Area: 269 sq. ft  
Counted as living area: Yes

Heated: Yes  
Finished: Yes  
Enclosed: Yes  
Contiguous: Yes  
Permitted: Yes  
Wet space: No  
Addition: No  
Conversion: No

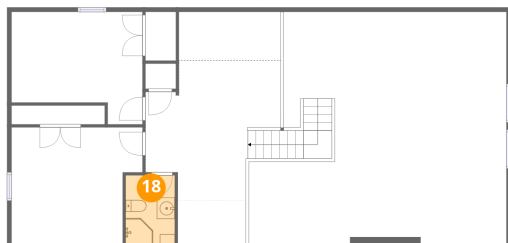
### 17 Floor 3 - Loft



Dimensions: 15'3" x 26'2"  
Area: 240 sq. ft  
Counted as living area: Yes

Heated: Yes  
Finished: Yes  
Enclosed: Yes  
Contiguous: Yes  
Permitted: Yes  
Wet space: No  
Addition: No  
Conversion: No

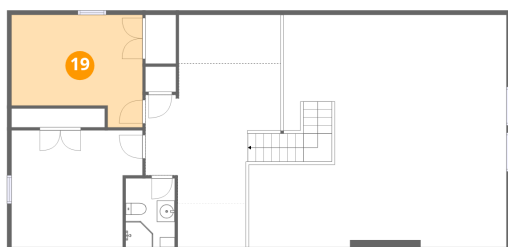
### 18 Floor 3 - Bath



Dimensions: 5'6" x 7'9"  
Area: 43 sq. ft  
Counted as living area: Yes

Heated: Yes  
Finished: Yes  
Enclosed: Yes  
Contiguous: Yes  
Permitted: Yes  
Wet space: Yes  
Addition: No  
Conversion: No

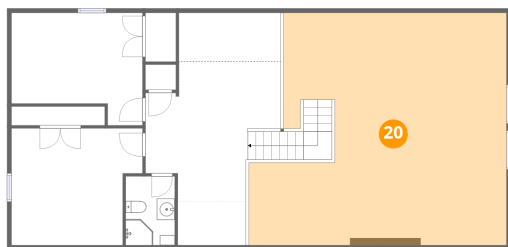
### 19 Floor 3 - Bedroom



Dimensions: 14'9" x 12'8"  
Area: 161 sq. ft  
Counted as living area: Yes

Heated: Yes  
Finished: Yes  
Enclosed: Yes  
Contiguous: Yes  
Permitted: Yes  
Wet space: No  
Addition: No  
Conversion: No

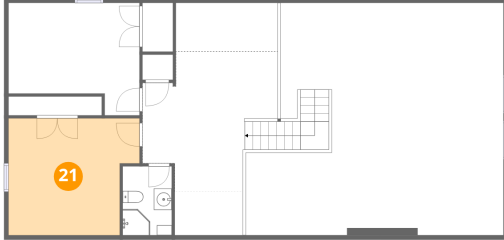
### 20 Floor 3 - Open To Below



Dimensions: 29'1" x 26'2"  
Area: 661 sq. ft  
Counted as living area: No

Heated: No  
Finished: No  
Enclosed: No  
Contiguous: Yes  
Permitted: No  
Wet space: No  
Addition: No  
Conversion: No

**21** Floor 3 - Bedroom



**Dimensions:** 14'9" x 13'2"  
**Area:** 177 sq. ft  
**Counted as living area:** Yes

**Heated:** Yes  
**Finished:** Yes  
**Enclosed:** Yes  
**Contiguous:** Yes  
**Permitted:** Yes  
**Wet space:** No  
**Addition:** No  
**Conversion:** No