

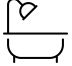

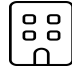




144 Primitive Acres Lane, Boones Mill, Franklin County, Virginia, United States, 24065

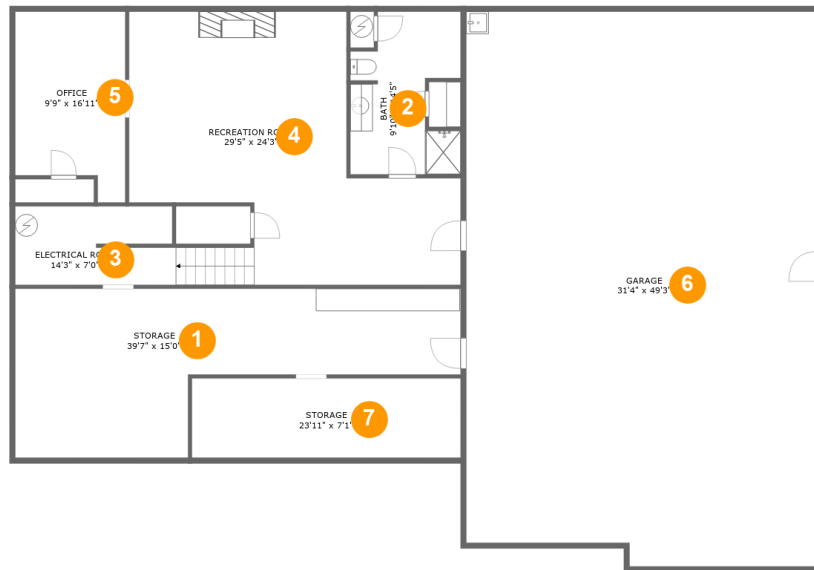


Property Summary

 **2** garages  **4** bedrooms  **3** bathrooms  **1** half baths

 **3** floors  **5,448** Gross Living Area sqft  **9,822** total sqft

144 Primitive Acres Lane, Boones Mill, Franklin County, Virginia, United States, 24065



Room Dimensions

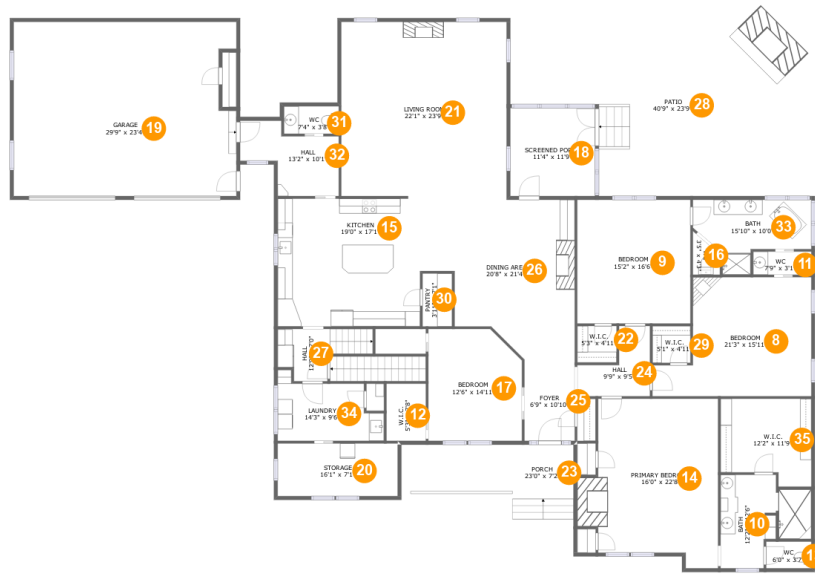
Floor 1

Total sqft: 3219

Living area: 911

#	Room name	Dimensions	Area (sqft)	Counted as Living Area
1	Storage	39'7" x 15'0"	415 sq. ft	No
2	Bath	9'10" x 14'5"	118 sq. ft	Yes
3	Electrical Room	14'3" x 7'0"	96 sq. ft	No
4	Recreation Room	29'5" x 24'3"	506 sq. ft	Yes
5	Office	9'9" x 16'11"	148 sq. ft	Yes
6	Garage	31'4" x 49'3"	1511 sq. ft	No
7	Storage	23'11" x 7'1"	168 sq. ft	No

144 Primitive Acres Lane, Boones Mill, Franklin County, Virginia, United States, 24065



Room Dimensions

Floor 2

Total sqft: 5533

Living area: 3735

#	Room name	Dimensions	Area (sqft)	Counted as Living Area
8	Bedroom	21'3" x 15'11"	274 sq. ft	Yes
9	Bedroom	15'2" x 16'6"	250 sq. ft	Yes
10	Bath	12'2" x 12'6"	116 sq. ft	Yes
11	Wc	7'9" x 3'1"	24 sq. ft	Yes
12	W.i.c.	5'3" x 7'8"	40 sq. ft	Yes
13	Wc	6'0" x 3'7"	22 sq. ft	Yes
14	Primary Bedroom	16'0" x 22'8"	357 sq. ft	Yes
15	Kitchen	19'0" x 17'1"	325 sq. ft	Yes
16	Wc	3'5" x 4'3"	16 sq. ft	Yes
17	Bedroom	12'6" x 14'11"	178 sq. ft	Yes
18	Screened Porch	11'4" x 11'9"	133 sq. ft	No

**144 Primitive Acres Lane, Boones Mill, Franklin
County, Virginia, United States, 24065**

#	Room name	Dimensions	Area (sqft)	Counted as Living Area
19	Garage	29'9" x 23'4"	674 sq. ft	No
20	Storage	16'1" x 7'1"	113 sq. ft	Yes
21	Living Room	22'1" x 23'9"	520 sq. ft	Yes
22	W.i.c.	5'3" x 4'11"	26 sq. ft	Yes
23	Porch	23'0" x 7'2"	147 sq. ft	No
24	Hall	9'9" x 9'5"	62 sq. ft	Yes
25	Foyer	6'9" x 10'10"	73 sq. ft	Yes
26	Dining Area	20'8" x 21'4"	356 sq. ft	Yes
27	Hall	12'9" x 7'0"	63 sq. ft	Yes
28	Patio	40'9" x 23'9"	761 sq. ft	No
29	W.i.c.	5'1" x 4'11"	25 sq. ft	Yes
30	Pantry	3'11" x 7'1"	28 sq. ft	Yes
31	Wc	7'4" x 3'8"	27 sq. ft	Yes
32	Hall	13'2" x 10'1"	93 sq. ft	Yes
33	Bath	15'10" x 10'0"	113 sq. ft	Yes
34	Laundry	14'3" x 9'6"	101 sq. ft	Yes
35	W.i.c.	12'2" x 11'9"	128 sq. ft	Yes

144 Primitive Acres Lane, Boones Mill, Franklin County, Virginia, United States, 24065



Room Dimensions

Floor 3

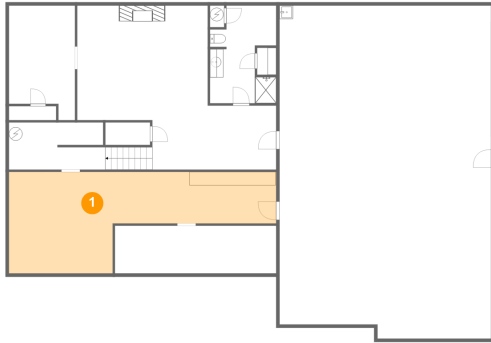
Total sqft: 1070

Living area: 802

#	Room name	Dimensions	Area (sqft)	Counted as Living Area
36	Attic	9'3" x 13'7"	84 sq. ft	No
37	Bonus Room	35'4" x 25'3"	741 sq. ft	Yes
38	Electrical Room	10'7" x 6'10"	49 sq. ft	No

144 Primitive Acres Lane, Boones Mill, Franklin County, Virginia, United States, 24065

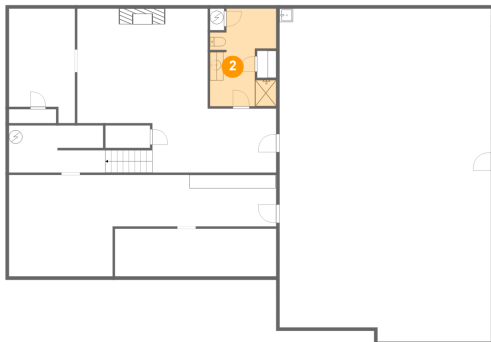
1 Floor 1 - Storage



Dimensions: 39'7" x 15'0"
Area: 415 sq. ft
Counted as Living Area: No

Heated: No
Finished: No
Enclosed: No
Contiguous: Yes
Permitted: Yes
Wet Space: No
Addition: No
Conversion: No

2 Floor 1 - Bath



Dimensions: 9'10" x 14'5"
Area: 118 sq. ft
Counted as Living Area:
Yes

Heated: Yes
Finished: Yes
Enclosed: Yes
Contiguous:
Yes
Permitted: Yes
Wet Space: Yes
Addition: No
Conversion: No

144 Primitive Acres Lane, Boones Mill, Franklin County, Virginia, United States, 24065

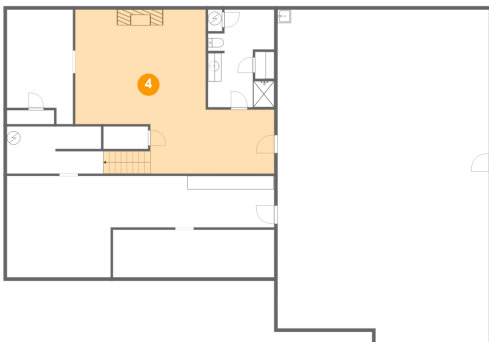
3 Floor 1 - Electrical Room



Dimensions: 14'3" x 7'0"
Area: 96 sq. ft
Counted as Living Area: No

Heated: No
Finished: No
Enclosed: Yes
Contiguous: Yes
Permitted: Yes
Wet Space: No
Addition: No
Conversion: No

4 Floor 1 - Recreation Room



Dimensions: 29'5" x 24'3"
Area: 506 sq. ft
Counted as Living Area: Yes

Heated: Yes
Finished: Yes
Enclosed: Yes
Contiguous: Yes
Permitted: Yes
Wet Space: No
Addition: No
Conversion: No

5 Floor 1 - Office

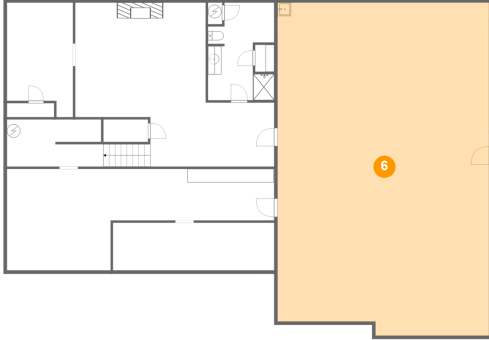


Dimensions: 9'9" x 16'11"
Area: 148 sq. ft
Counted as Living Area: Yes

Heated: Yes
Finished: Yes
Enclosed: Yes
Contiguous: Yes
Permitted: Yes
Wet Space: No
Addition: No
Conversion: No

144 Primitive Acres Lane, Boones Mill, Franklin County, Virginia, United States, 24065

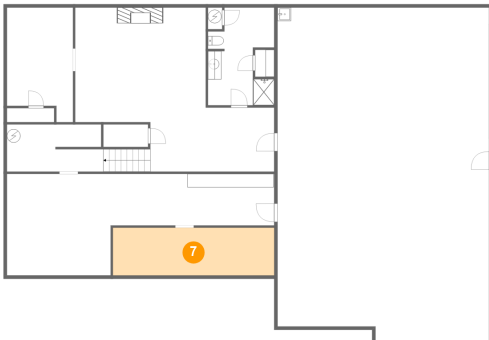
6 Floor 1 - Garage



Dimensions: 31'4" x 49'3"
Area: 1511 sq. ft
Counted as Living Area: No

Heated: No
Finished: No
Enclosed: Yes
Contiguous: Yes
Permitted: Yes
Wet Space: No
Addition: No
Conversion: No

7 Floor 1 - Storage



Dimensions: 23'11" x 7'1"
Area: 168 sq. ft
Counted as Living Area: No

Heated: No
Finished: No
Enclosed: No
Contiguous: Yes
Permitted: Yes
Wet Space: No
Addition: No
Conversion: No

8 Floor 2 - Bedroom

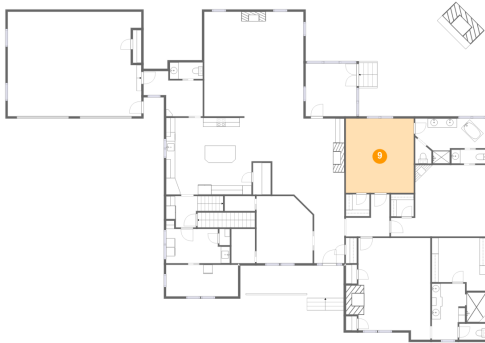


Dimensions: 21'3" x 15'11"
Area: 274 sq. ft
Counted as Living Area: Yes

Heated: Yes
Finished: Yes
Enclosed: Yes
Contiguous: Yes
Permitted: Yes
Wet Space: No
Addition: No
Conversion: No

144 Primitive Acres Lane, Boones Mill, Franklin County, Virginia, United States, 24065

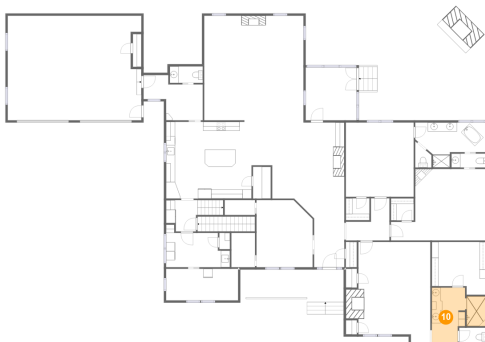
9 Floor 2 - Bedroom



Dimensions: 15'2" x 16'6"
Area: 250 sq. ft
Counted as Living Area:
Yes

Heated: Yes
Finished: Yes
Enclosed: Yes
Contiguous:
Yes
Permitted: Yes
Wet Space: No
Addition: No
Conversion: No

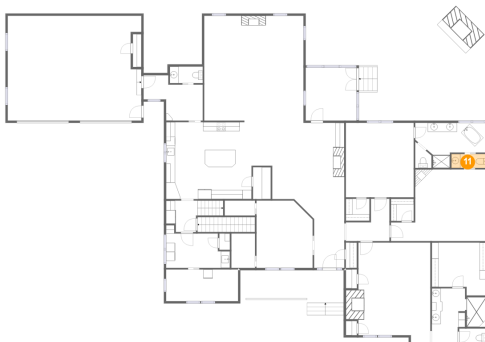
10 Floor 2 - Bath



Dimensions: 12'2" x 12'6"
Area: 116 sq. ft
Counted as Living Area:
Yes

Heated: Yes
Finished: Yes
Enclosed: Yes
Contiguous:
Yes
Permitted: Yes
Wet Space: Yes
Addition: No
Conversion: No

11 Floor 2 - Wc



Dimensions: 7'9" x 3'1"
Area: 24 sq. ft
Counted as Living Area:
Yes

Heated: Yes
Finished: Yes
Enclosed: Yes
Contiguous:
Yes
Permitted: Yes
Wet Space: Yes
Addition: No
Conversion: No

144 Primitive Acres Lane, Boones Mill, Franklin County, Virginia, United States, 24065

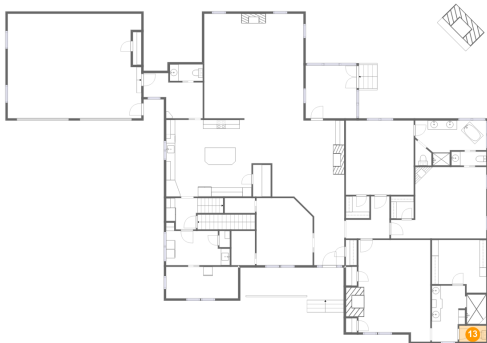
12 Floor 2 - W.i.c.



Dimensions: 5'3" x 7'8"
Area: 40 sq. ft
Counted as Living Area:
Yes

Heated: Yes
Finished: Yes
Enclosed: Yes
Contiguous:
Yes
Permitted: Yes
Wet Space: No
Addition: No
Conversion: No

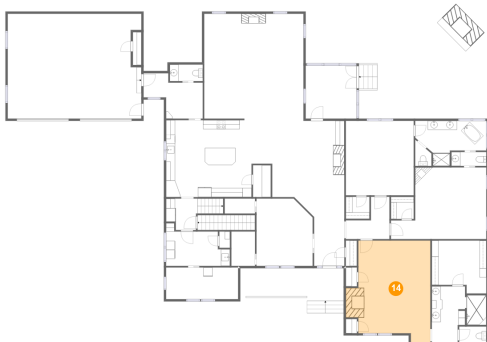
13 Floor 2 - Wc



Dimensions: 6'0" x 3'7"
Area: 22 sq. ft
Counted as Living Area:
Yes

Heated: Yes
Finished: Yes
Enclosed: Yes
Contiguous:
Yes
Permitted: Yes
Wet Space: Yes
Addition: No
Conversion: No

14 Floor 2 - Primary Bedroom

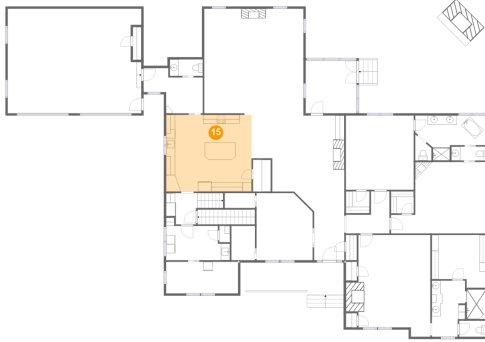


Dimensions: 16'0" x 22'8"
Area: 357 sq. ft
Counted as Living Area:
Yes

Heated: Yes
Finished: Yes
Enclosed: Yes
Contiguous:
Yes
Permitted: Yes
Wet Space: No
Addition: No
Conversion: No

144 Primitive Acres Lane, Boones Mill, Franklin County, Virginia, United States, 24065

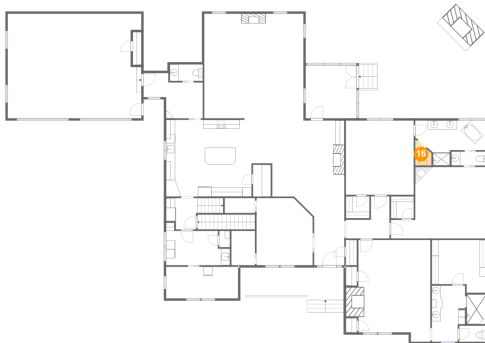
15 Floor 2 - Kitchen



Dimensions: 19'0" x 17'1"
Area: 325 sq. ft
Counted as Living Area:
Yes

Heated: Yes
Finished: Yes
Enclosed: Yes
Contiguous:
Yes
Permitted: Yes
Wet Space: No
Addition: No
Conversion: No

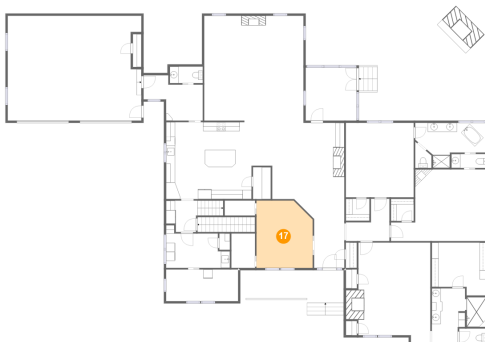
16 Floor 2 - Wc



Dimensions: 3'5" x 4'3"
Area: 16 sq. ft
Counted as Living Area:
Yes

Heated: Yes
Finished: Yes
Enclosed: Yes
Contiguous:
Yes
Permitted: Yes
Wet Space: Yes
Addition: No
Conversion: No

17 Floor 2 - Bedroom

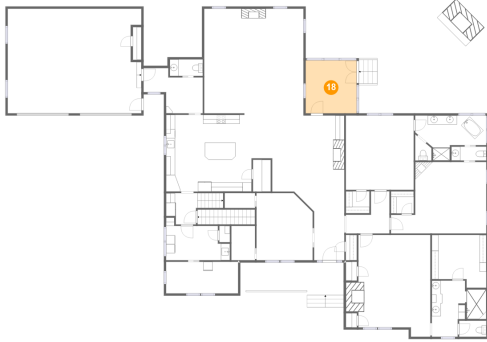


Dimensions: 12'6" x 14'11"
Area: 178 sq. ft
Counted as Living Area:
Yes

Heated: Yes
Finished: Yes
Enclosed: Yes
Contiguous:
Yes
Permitted: Yes
Wet Space: No
Addition: No
Conversion: No

144 Primitive Acres Lane, Boones Mill, Franklin County, Virginia, United States, 24065

18 Floor 2 - Screened Porch



Dimensions: 11'4" x 11'9"
Area: 133 sq. ft
Counted as Living Area: No

Heated: No
Finished: Yes
Enclosed: No
Contiguous: Yes
Permitted: Yes
Wet Space: No
Addition: No
Conversion: No

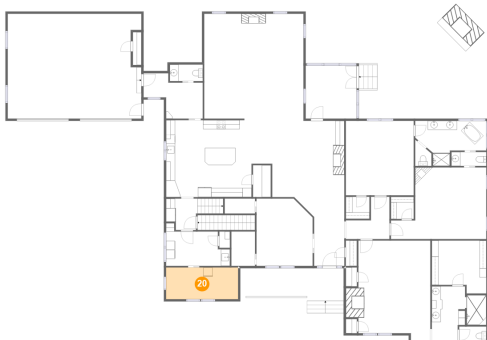
19 Floor 2 - Garage



Dimensions: 29'9" x 23'4"
Area: 674 sq. ft
Counted as Living Area: No

Heated: No
Finished: No
Enclosed: Yes
Contiguous: Yes
Permitted: Yes
Wet Space: No
Addition: No
Conversion: No

20 Floor 2 - Storage

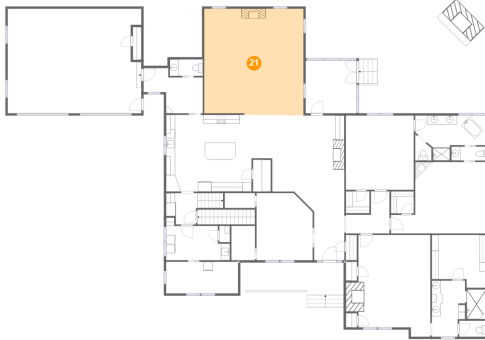


Dimensions: 16'1" x 7'1"
Area: 113 sq. ft
Counted as Living Area: Yes

Heated: Yes
Finished: Yes
Enclosed: Yes
Contiguous: Yes
Permitted: Yes
Wet Space: No
Addition: No
Conversion: No

144 Primitive Acres Lane, Boones Mill, Franklin County, Virginia, United States, 24065

21 Floor 2 - Living Room



Dimensions: 22'1" x 23'9"
Area: 520 sq. ft
Counted as Living Area:
Yes

Heated: Yes
Finished: Yes
Enclosed: Yes
Contiguous:
Yes
Permitted: Yes
Wet Space: No
Addition: No
Conversion: No

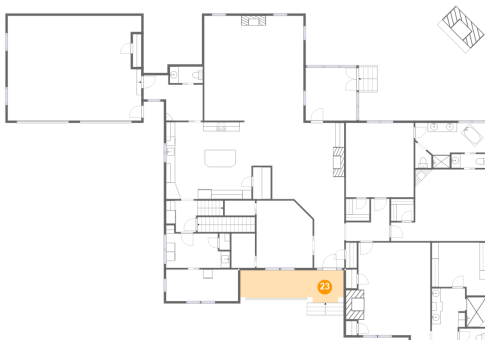
22 Floor 2 - W.i.c.



Dimensions: 5'3" x 4'11"
Area: 26 sq. ft
Counted as Living Area:
Yes

Heated: Yes
Finished: Yes
Enclosed: Yes
Contiguous:
Yes
Permitted: Yes
Wet Space: No
Addition: No
Conversion: No

23 Floor 2 - Porch

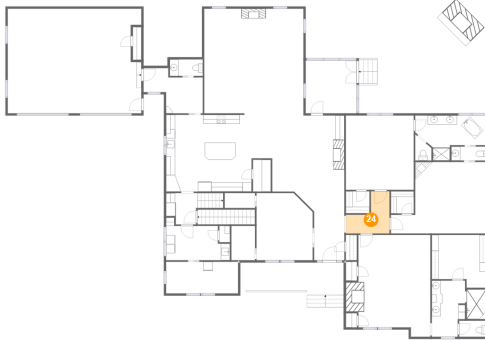


Dimensions: 23'0" x 7'2"
Area: 147 sq. ft
Counted as Living Area: No

Heated: No
Finished: Yes
Enclosed: No
Contiguous: Yes
Permitted: Yes
Wet Space: No
Addition: No
Conversion: No

144 Primitive Acres Lane, Boones Mill, Franklin County, Virginia, United States, 24065

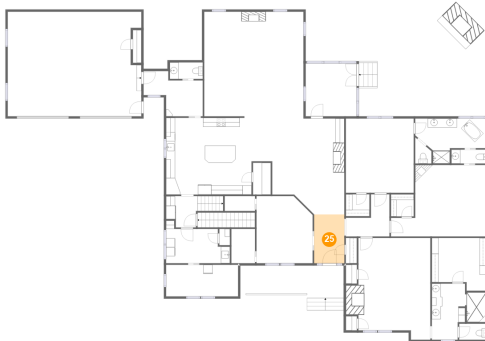
24 Floor 2 - Hall



Dimensions: 9'9" x 9'5"
Area: 62 sq. ft
Counted as Living Area:
Yes

Heated: Yes
Finished: Yes
Enclosed: Yes
Contiguous:
Yes
Permitted: Yes
Wet Space: No
Addition: No
Conversion: No

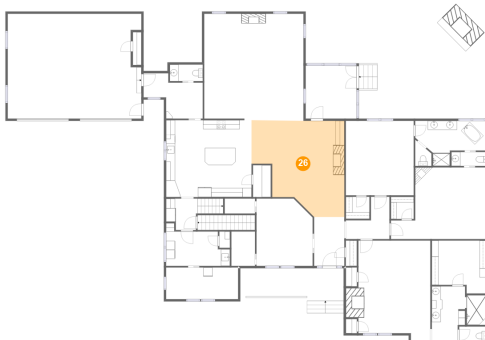
25 Floor 2 - Foyer



Dimensions: 6'9" x 10'10"
Area: 73 sq. ft
Counted as Living Area:
Yes

Heated: Yes
Finished: Yes
Enclosed: Yes
Contiguous:
Yes
Permitted: Yes
Wet Space: No
Addition: No
Conversion: No

26 Floor 2 - Dining Area



Dimensions: 20'8" x 21'4"
Area: 356 sq. ft
Counted as Living Area:
Yes

Heated: Yes
Finished: Yes
Enclosed: Yes
Contiguous:
Yes
Permitted: Yes
Wet Space: No
Addition: No
Conversion: No

144 Primitive Acres Lane, Boones Mill, Franklin County, Virginia, United States, 24065

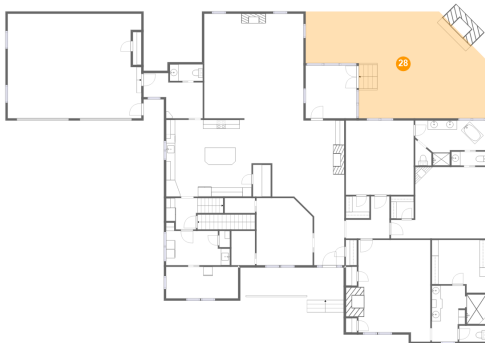
27 Floor 2 - Hall



Dimensions: 12'9" x 7'0"
Area: 63 sq. ft
Counted as Living Area:
Yes

Heated: Yes
Finished: Yes
Enclosed: Yes
Contiguous:
Yes
Permitted: Yes
Wet Space: No
Addition: No
Conversion: No

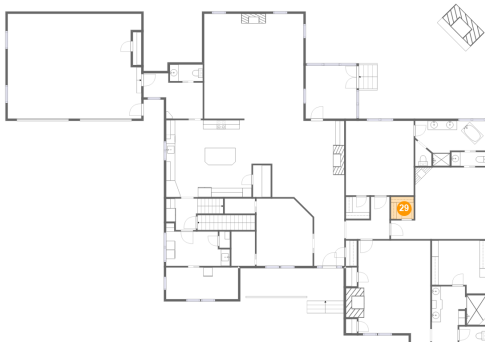
28 Floor 2 - Patio



Dimensions: 40'9" x 23'9"
Area: 761 sq. ft
Counted as Living Area: No

Heated: No
Finished: Yes
Enclosed: No
Contiguous: Yes
Permitted: Yes
Wet Space: No
Addition: No
Conversion: No

29 Floor 2 - W.i.c.



Dimensions: 5'1" x 4'11"
Area: 25 sq. ft
Counted as Living Area:
Yes

Heated: Yes
Finished: Yes
Enclosed: Yes
Contiguous:
Yes
Permitted: Yes
Wet Space: No
Addition: No
Conversion: No

144 Primitive Acres Lane, Boones Mill, Franklin County, Virginia, United States, 24065

30 Floor 2 - Pantry



Dimensions: 3'11" x 7'1"
Area: 28 sq. ft
Counted as Living Area:
Yes

Heated: Yes
Finished: Yes
Enclosed: Yes
Contiguous:
Yes
Permitted: Yes
Wet Space: No
Addition: No
Conversion: No

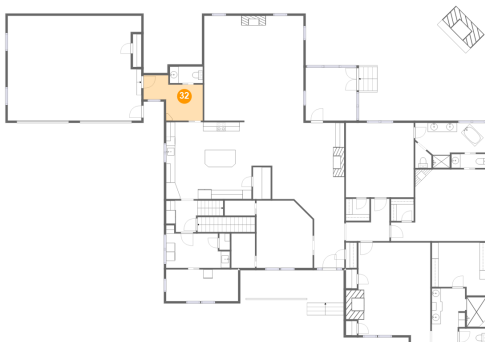
31 Floor 2 - Wc



Dimensions: 7'4" x 3'8"
Area: 27 sq. ft
Counted as Living Area:
Yes

Heated: Yes
Finished: Yes
Enclosed: Yes
Contiguous:
Yes
Permitted: Yes
Wet Space: Yes
Addition: No
Conversion: No

32 Floor 2 - Hall



Dimensions: 13'2" x 10'1"
Area: 93 sq. ft
Counted as Living Area:
Yes

Heated: Yes
Finished: Yes
Enclosed: Yes
Contiguous:
Yes
Permitted: Yes
Wet Space: No
Addition: No
Conversion: No

144 Primitive Acres Lane, Boones Mill, Franklin County, Virginia, United States, 24065

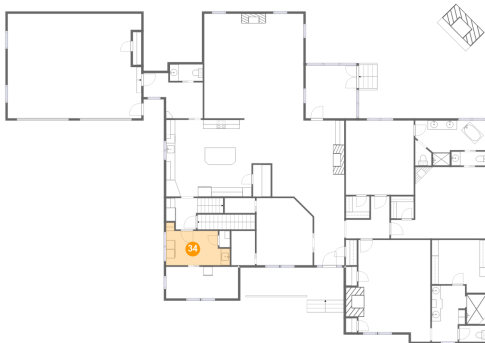
33 Floor 2 - Bath



Dimensions: 15'10" x 10'0"
Area: 113 sq. ft
Counted as Living Area:
Yes

Heated: Yes
Finished: Yes
Enclosed: Yes
Contiguous:
Yes
Permitted: Yes
Wet Space: Yes
Addition: No
Conversion: No

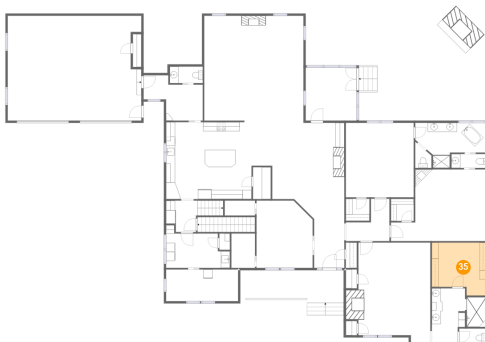
34 Floor 2 - Laundry



Dimensions: 14'3" x 9'6"
Area: 101 sq. ft
Counted as Living Area:
Yes

Heated: Yes
Finished: Yes
Enclosed: Yes
Contiguous:
Yes
Permitted: Yes
Wet Space: No
Addition: No
Conversion: No

35 Floor 2 - W.i.c.



Dimensions: 12'2" x 11'9"
Area: 128 sq. ft
Counted as Living Area:
Yes

Heated: Yes
Finished: Yes
Enclosed: Yes
Contiguous:
Yes
Permitted: Yes
Wet Space: No
Addition: No
Conversion: No

144 Primitive Acres Lane, Boones Mill, Franklin County, Virginia, United States, 24065

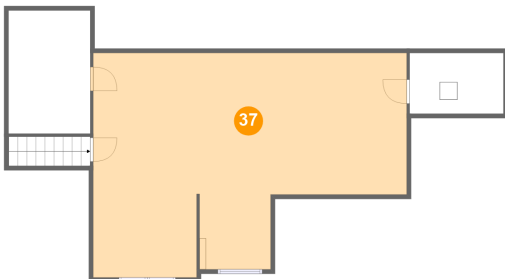
36 Floor 3 - Attic



Dimensions: 9'3" x 13'7"
Area: 84 sq. ft
Counted as Living Area: No

Heated: No
Finished: No
Enclosed: Yes
Contiguous: Yes
Permitted: Yes
Wet Space: No
Addition: No
Conversion: No

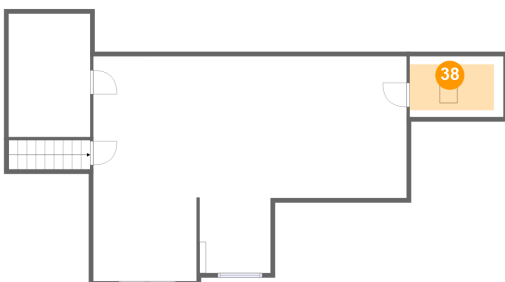
37 Floor 3 - Bonus Room



Dimensions: 35'4" x 25'3"
Area: 741 sq. ft
Counted as Living Area: Yes

Heated: Yes
Finished: Yes
Enclosed: Yes
Contiguous: Yes
Permitted: Yes
Wet Space: No
Addition: No
Conversion: No

38 Floor 3 - Electrical Room



Dimensions: 10'7" x 6'10"
Area: 49 sq. ft
Counted as Living Area: No

Heated: No
Finished: No
Enclosed: Yes
Contiguous: Yes
Permitted: Yes
Wet Space: No
Addition: No
Conversion: No