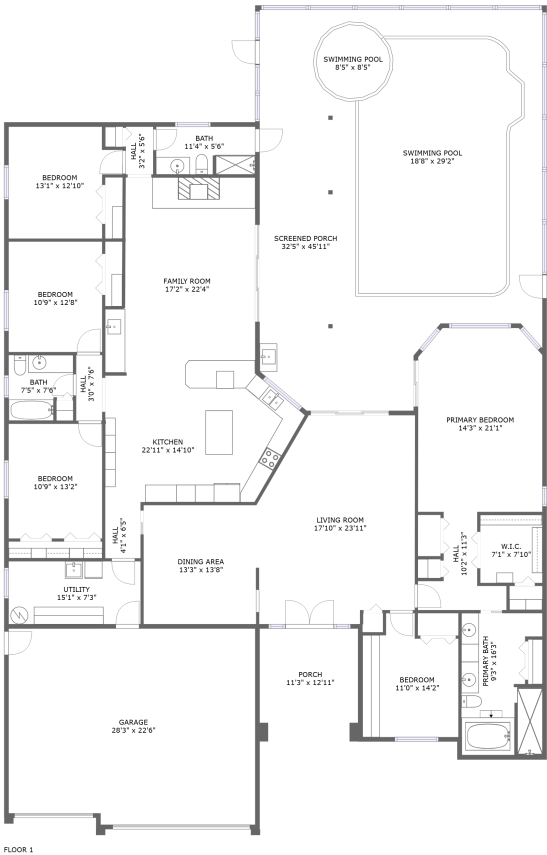


Home report

2632 Westview, Wynwoods Landing, Clearwater, Pinellas
County, Florida, United States, 33761



Total Area: 2719 sq. ft
Floor 1: 2719 sq. ft
Excluded: Garage 621 sq. ft, Utility 109 sq. ft, Porch 146 sq. ft, Screened porch 803 sq. ft,
Walls: 221 sq. ft

Property summary

 **1** Floors

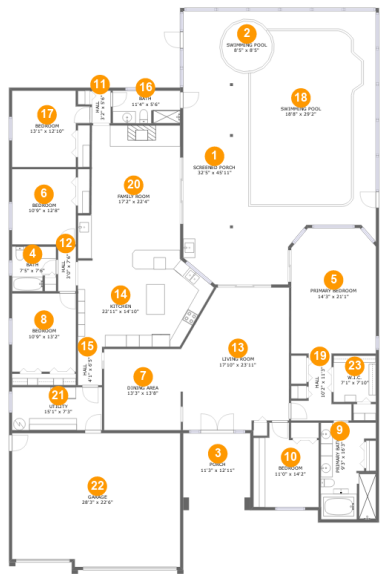
 **5** Bedrooms

 **3** Bathrooms

 **1** Garages

Home report

2632 Westview, Wynwoods Landing, Clearwater, Pinellas
County, Florida, United States, 33761



Room dimensions

Floor 1 Total:2719sqft Excluded: 1679sqft

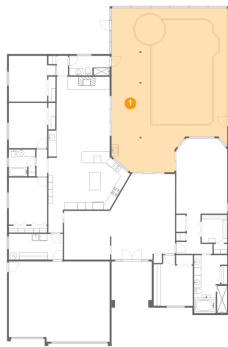
#		Max Dimensions	sqft	Included
1	Screened Porch	32'5" x 45'11"	1337 sq. ft	No
2	Swimming Pool	8'5" x 8'5"	56 sq. ft	No
3	Porch	11'3" x 12'11"	146 sq. ft	No
4	Bath	7'5" x 7'6"	50 sq. ft	Yes
5	Primary Bedroom	14'3" x 21'1"	291 sq. ft	Yes
6	Bedroom	10'9" x 12'8"	136 sq. ft	Yes
7	Dining Area	13'3" x 13'8"	180 sq. ft	Yes
8	Bedroom	10'9" x 13'2"	141 sq. ft	Yes
9	Primary Bath	9'3" x 16'3"	137 sq. ft	Yes
10	Bedroom	11'0" x 14'2"	135 sq. ft	Yes
11	Hall	3'2" x 5'6"	17 sq. ft	Yes

Home report

**2632 Westview, Wynwoods Landing, Clearwater, Pinellas
County, Florida, United States, 33761**

#		Max Dimensions	sqft	Included
12	Hall	3'0" x 7'6"	23 sq. ft	Yes
13	Living Room	17'10" x 23'11"	390 sq. ft	Yes
14	Kitchen	22'11" x 14'10"	296 sq. ft	Yes
15	Hall	4'1" x 6'5"	26 sq. ft	Yes
16	Bath	11'4" x 5'6"	61 sq. ft	Yes
17	Bedroom	13'1" x 12'10"	149 sq. ft	Yes
18	Swimming Pool	18'8" x 29'2"	478 sq. ft	No
19	Hall	10'2" x 11'3"	63 sq. ft	Yes
20	Family Room	17'2" x 22'4"	349 sq. ft	Yes
21	Utility	15'1" x 7'3"	109 sq. ft	No
22	Garage	28'3" x 22'6"	621 sq. ft	No
23	W.I.C.	7'1" x 7'10"	56 sq. ft	Yes

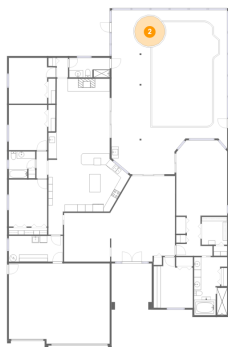
1 Floor 1 - Screened Porch



Max Dimensions: 32'5" x 45'11"
Calculated Area: 1337 sq. ft
Included: No

Heated: No
Finished: Yes
Enclosed: No
Contiguous: Yes
Permitted: Yes
Wet space: No
Addition: No
Conversion: No

2 Floor 1 - Swimming Pool



Max Dimensions: 8'5" x 8'5"
Calculated Area: 56 sq. ft
Included: No

Heated: No
Finished: No
Enclosed: No
Contiguous: Yes
Permitted: No
Wet space: No
Addition: No
Conversion: No

3 Floor 1 - Porch



Max Dimensions: 11'3" x 12'11"
Calculated Area: 146 sq. ft
Included: No

Heated: No
Finished: Yes
Enclosed: No
Contiguous: Yes
Permitted: Yes
Wet space: No
Addition: No
Conversion: No

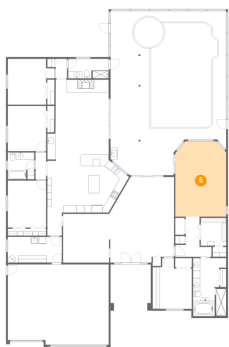
4 Floor 1 - Bath



Max Dimensions: 7'5" x 7'6"
Calculated Area: 50 sq. ft
Included: Yes

Heated: Yes
Finished: Yes
Enclosed: Yes
Contiguous: Yes
Permitted: Yes
Wet space: Yes
Addition: No
Conversion: No

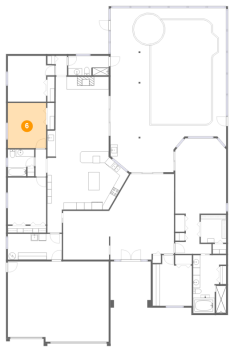
5 Floor 1 - Primary Bedroom



Max Dimensions: 14'3" x 21'1"
Calculated Area: 291 sq. ft
Included: Yes

Heated: Yes
Finished: Yes
Enclosed: Yes
Contiguous: Yes
Permitted: Yes
Wet space: No
Addition: No
Conversion: No

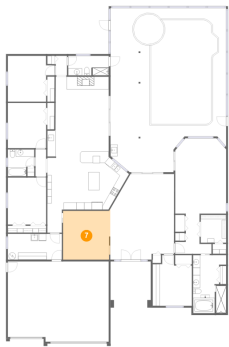
6 Floor 1 - Bedroom



Max Dimensions: 10'9" x 12'8"
Calculated Area: 136 sq. ft
Included: Yes

Heated: Yes
Finished: Yes
Enclosed: Yes
Contiguous: Yes
Permitted: Yes
Wet space: No
Addition: No
Conversion: No

7 Floor 1 - Dining Area



Max Dimensions: 13'3" x 13'8"
Calculated Area: 180 sq. ft
Included: Yes

Heated: Yes
Finished: Yes
Enclosed: Yes
Contiguous: Yes
Permitted: Yes
Wet space: No
Addition: No
Conversion: No

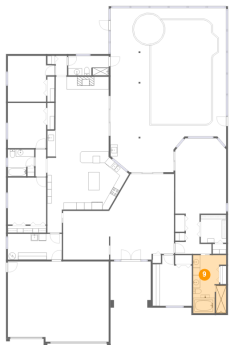
8 Floor 1 - Bedroom



Max Dimensions: 10'9" x 13'2"
Calculated Area: 141 sq. ft
Included: Yes

Heated: Yes
Finished: Yes
Enclosed: Yes
Contiguous: Yes
Permitted: Yes
Wet space: No
Addition: No
Conversion: No

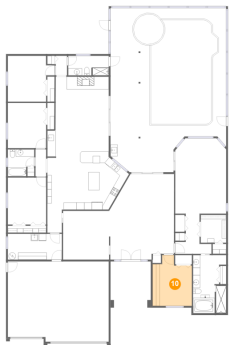
9 Floor 1 - Primary Bath



Max Dimensions: 9'3" x 16'3"
Calculated Area: 137 sq. ft
Included: Yes

Heated: Yes
Finished: Yes
Enclosed: Yes
Contiguous: Yes
Permitted: Yes
Wet space: Yes
Addition: No
Conversion: No

10 Floor 1 - Bedroom



Max Dimensions: 11'0" x 14'2"
Calculated Area: 135 sq. ft
Included: Yes

Heated: Yes
Finished: Yes
Enclosed: Yes
Contiguous: Yes
Permitted: Yes
Wet space: No
Addition: No
Conversion: No

11 Floor 1 - Hall



Max Dimensions: 3'2" x 5'6"
Calculated Area: 17 sq. ft
Included: Yes

Heated: Yes
Finished: Yes
Enclosed: Yes
Contiguous: Yes
Permitted: Yes
Wet space: No
Addition: No
Conversion: No

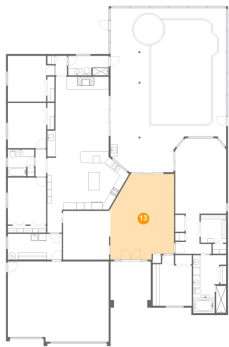
12 Floor 1 - Hall



Max Dimensions: 3'0" x 7'6"
Calculated Area: 23 sq. ft
Included: Yes

Heated: Yes
Finished: Yes
Enclosed: Yes
Contiguous: Yes
Permitted: Yes
Wet space: No
Addition: No
Conversion: No

13 Floor 1 - Living Room



Max Dimensions: 17'10" x 23'11"
Calculated Area: 390 sq. ft
Included: Yes

Heated: Yes
Finished: Yes
Enclosed: Yes
Contiguous: Yes
Permitted: Yes
Wet space: No
Addition: No
Conversion: No

14 Floor 1 - Kitchen



Max Dimensions: 22'11" x 14'10"
Calculated Area: 296 sq. ft
Included: Yes

Heated: Yes
Finished: Yes
Enclosed: Yes
Contiguous: Yes
Permitted: Yes
Wet space: No
Addition: No
Conversion: No

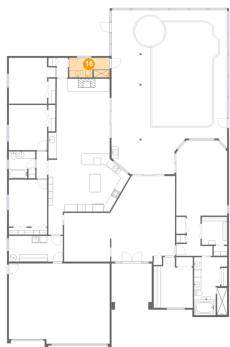
15 Floor 1 - Hall



Max Dimensions: 4'1" x 6'5"
Calculated Area: 26 sq. ft
Included: Yes

Heated: Yes
Finished: Yes
Enclosed: Yes
Contiguous: Yes
Permitted: Yes
Wet space: No
Addition: No
Conversion: No

16 Floor 1 - Bath



Max Dimensions: 11'4" x 5'6"
Calculated Area: 61 sq. ft
Included: Yes

Heated: Yes
Finished: Yes
Enclosed: Yes
Contiguous: Yes
Permitted: Yes
Wet space: Yes
Addition: No
Conversion: No

17 Floor 1 - Bedroom

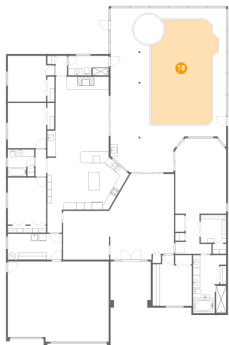


Max Dimensions: 13'1" x 12'10"
Calculated Area: 149 sq. ft
Included: Yes

Heated: Yes
Finished: Yes
Enclosed: Yes
Contiguous: Yes
Permitted: Yes
Wet space: No
Addition: No
Conversion: No

2632 Westview, Wynwoods Landing, Clearwater, Pinellas
County, Florida, United States, 33761

18 Floor 1 - Swimming Pool



Max Dimensions: 18'8" x 29'2"
Calculated Area: 478 sq. ft
Included: No

Heated: No
Finished: No
Enclosed: No
Contiguous: Yes
Permitted: No
Wet space: No
Addition: No
Conversion: No

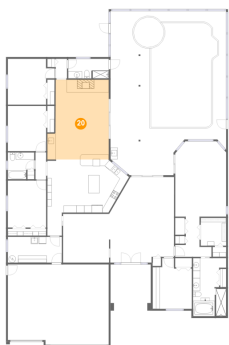
19 Floor 1 - Hall



Max Dimensions: 10'2" x 11'3"
Calculated Area: 63 sq. ft
Included: Yes

Heated: Yes
Finished: Yes
Enclosed: Yes
Contiguous: Yes
Permitted: Yes
Wet space: No
Addition: No
Conversion: No

20 Floor 1 - Family Room

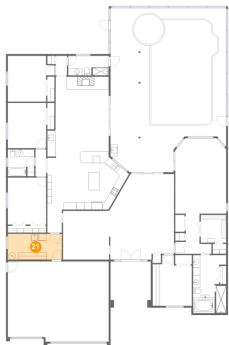


Max Dimensions: 17'2" x 22'4"
Calculated Area: 349 sq. ft
Included: Yes

Heated: Yes
Finished: Yes
Enclosed: Yes
Contiguous: Yes
Permitted: Yes
Wet space: No
Addition: No
Conversion: No

2632 Westview, Wynwoods Landing, Clearwater, Pinellas
County, Florida, United States, 33761

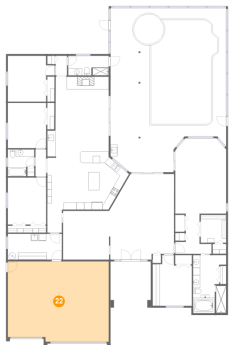
21 Floor 1 - Utility



Max Dimensions: 15'1" x 7'3"
Calculated Area: 109 sq. ft
Included: No

Heated: Yes
Finished: No
Enclosed: Yes
Contiguous: Yes
Permitted: Yes
Wet space: No
Addition: No
Conversion: No

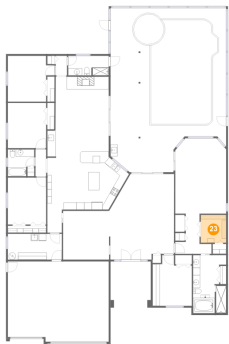
22 Floor 1 - Garage



Max Dimensions: 28'3" x 22'6"
Calculated Area: 621 sq. ft
Included: No

Heated: No
Finished: No
Enclosed: Yes
Contiguous: Yes
Permitted: Yes
Wet space: No
Addition: No
Conversion: No

23 Floor 1 - W.I.C.



Max Dimensions: 7'1" x 7'10"
Calculated Area: 56 sq. ft
Included: Yes

Heated: Yes
Finished: Yes
Enclosed: Yes
Contiguous: Yes
Permitted: Yes
Wet space: No
Addition: No
Conversion: No