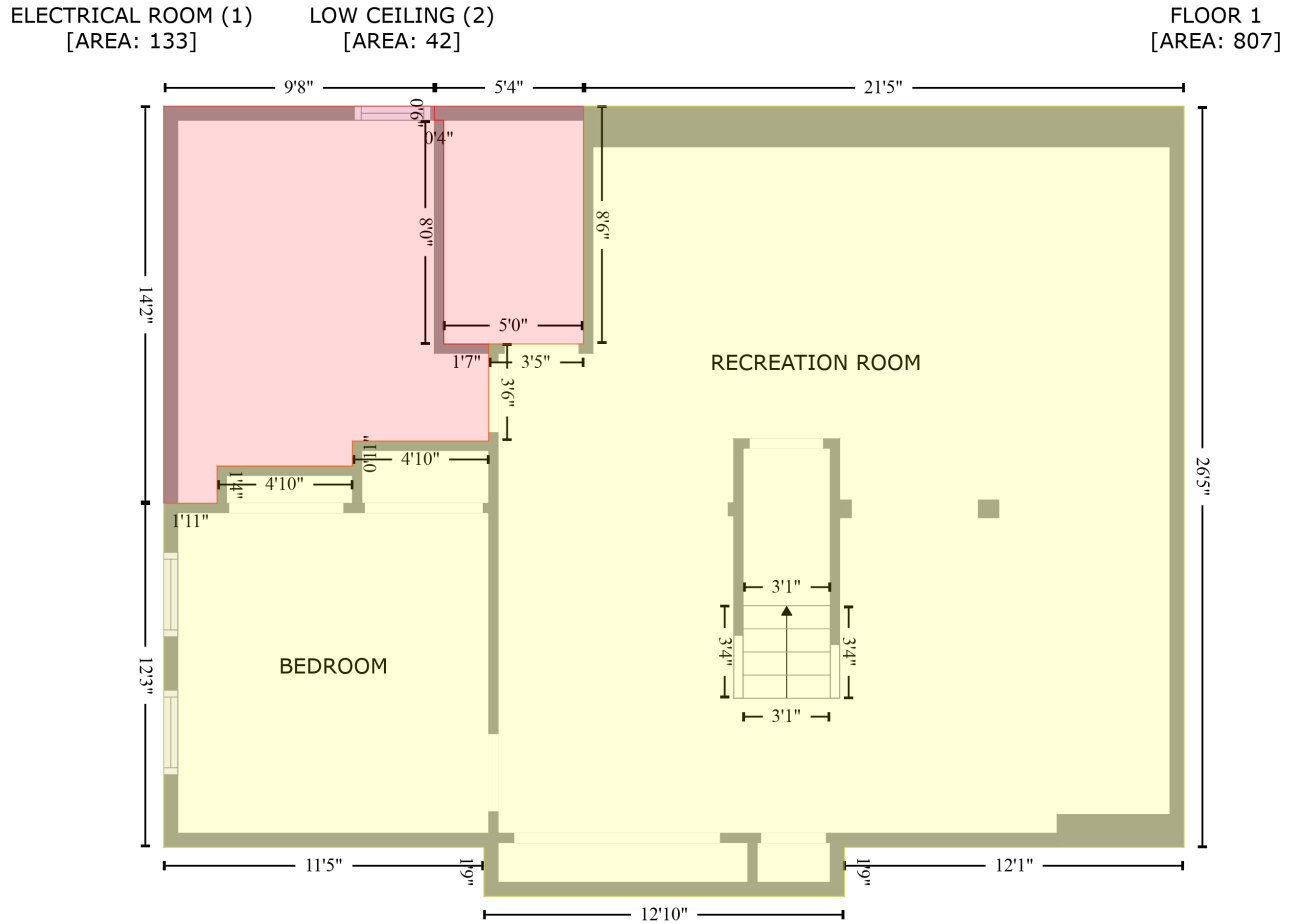


9715 Bay Hill Drive, Louisville, Jefferson County, Kentucky, United States, 40223

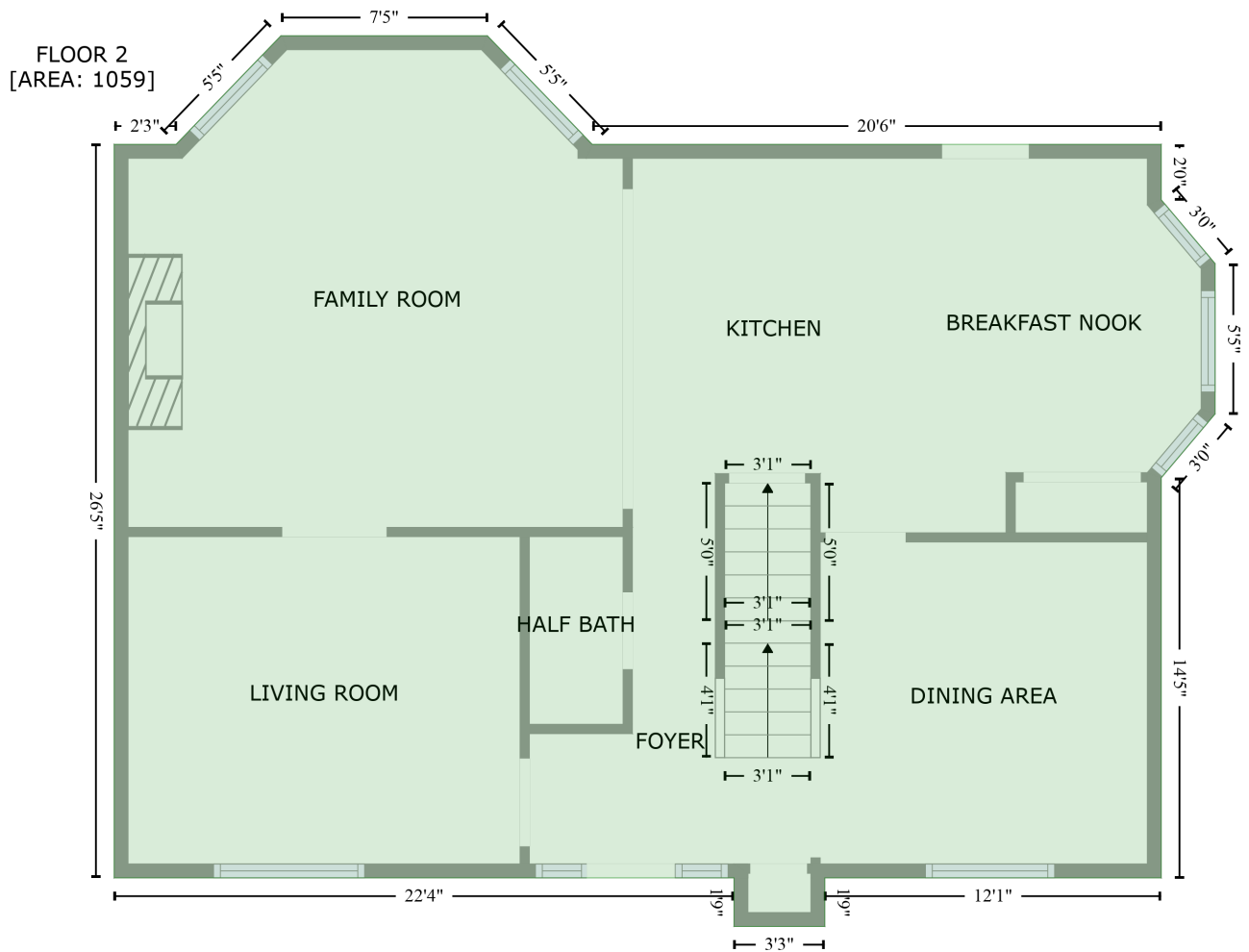
Gross Living Area: 2129 sq. ft



Space	Area (sq. ft)	Calculation <small>Coordinate Polygon Area Algorithm using inches</small>
FLOOR 1 (Living area)	807	$-\left((437.8 + 437.8) * (103.3 - 420) + (437.8 + 292.5) * (420 - 420) + (292.5 + 292.5) * (420 - 441) + (292.5 + 138.4) * (441 - 441) + (138.4 + 138.4) * (441 - 420) + (138.4 + 1.4) * (420 - 420) + (1.4 + 1.4) * (420 - 273) + (1.4 + 24.3) * (273 - 273) + (24.3 + 24.3) * (273 - 257.1) + (24.3 + 82.1) * (257.1 - 257.1) + (82.1 + 82.1) * (257.1 - 246.4) + (82.1 + 140.4) * (246.4 - 246.4) + (140.4 + 140.4) * (246.4 - 204.9) + (140.4 + 181) * (204.9 - 204.9) + (181 + 181) * (204.9 - 103.3) + (181 + 437.8) * (103.3 - 103.3)\right) * 0.5 * 0.00694$
ELECTRICAL ROOM (Non-living area)	133	$-\left((117.2 + 117.2) * (103.3 - 109.3) + (117.2 + 121.2) * (109.3 - 109.3) + (121.2 + 121.2) * (109.3 - 204.9) + (121.2 + 140.4) * (204.9 - 204.9) + (140.4 + 140.4) * (204.9 - 246.4) + (140.4 + 82.1) * (246.4 - 246.4) + (82.1 + 82.1) * (246.4 - 257.1) + (82.1 + 24.3) * (257.1 - 257.1) + (24.3 + 24.3) * (257.1 - 273) + (24.3 + 1.4) * (273 - 273) + (1.4 + 1.4) * (273 - 103.3) + (1.4 + 117.2) * (103.3 - 103.3)\right) * 0.5 * 0.00694$
LOW CEILING (Non-living area)	42	$-\left((181 + 181) * (103.3 - 204.9) + (181 + 121.2) * (204.9 - 204.9) + (121.2 + 121.2) * (204.9 - 109.3) + (121.2 + 117.2) * (109.3 - 109.3) + (117.2 + 117.2) * (109.3 - 103.3) + (117.2 + 181) * (103.3 - 103.3)\right) * 0.5 * 0.00694$

9715 Bay Hill Drive, Louisville, Jefferson County, Kentucky, United States, 40223

Gross Living Area: 2129 sq. ft

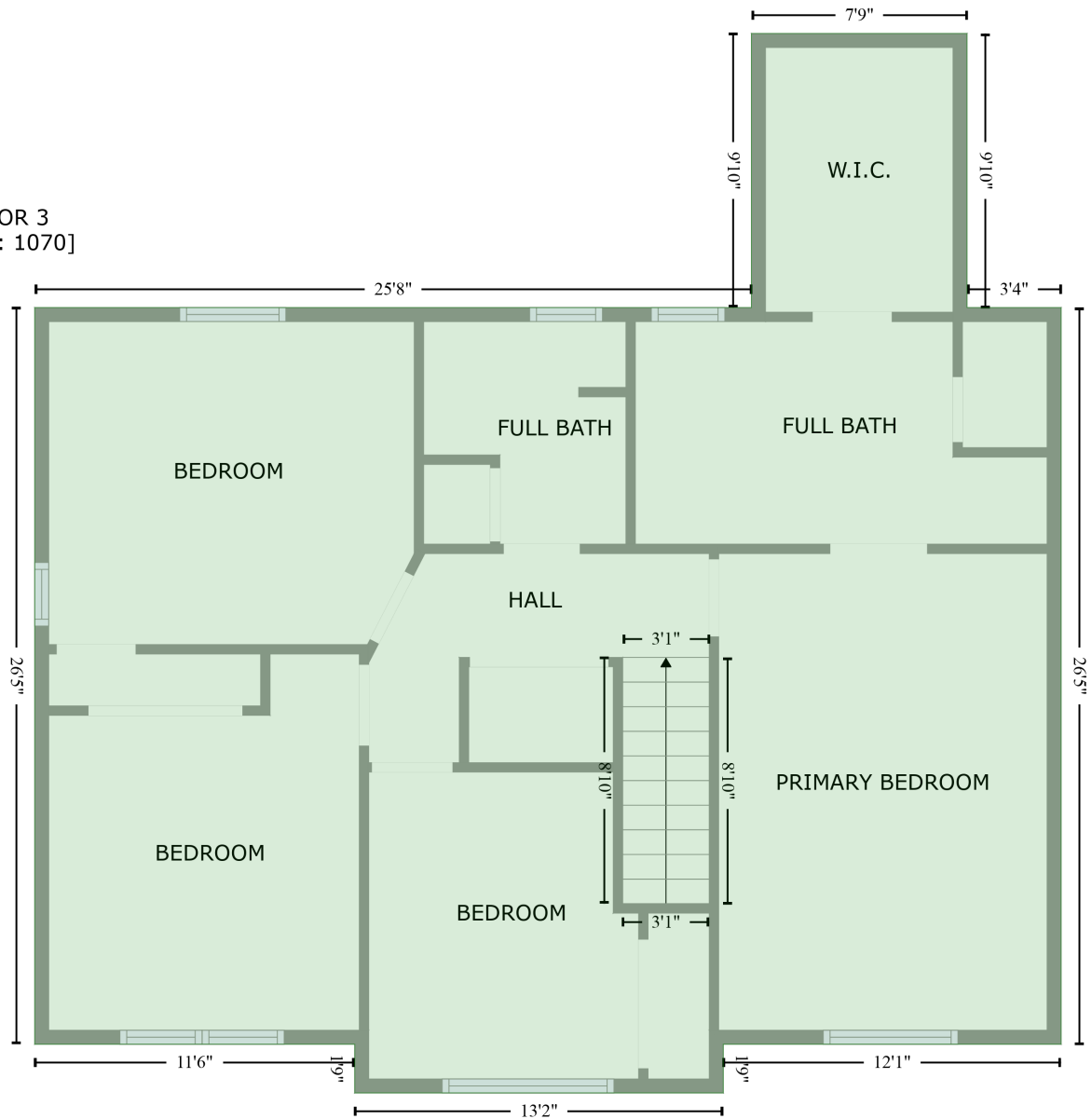


Space	Area (sq. ft)	Calculation <small>Coordinate Polygon Area Algorithm using inches</small>
FLOOR 2 (Living area)	1059	$ \begin{aligned} & -((163.4 + 208.7) * (73.1 - 120) + (208.7 + 454.4) * (120 - 120) + (454.4 + 454.4) * (120 - 144) + \\ & (454.4 + 477.7) * (144 - 171.5) + (477.7 + 477.7) * (171.5 - 236.4) + (477.7 + 454.4) * (236.4 - \\ & 263.9) + (454.4 + 454.4) * (263.9 - 436.7) + (454.4 + 309.2) * (436.7 - 436.7) + (309.2 + 309.2) * \\ & (436.7 - 457.7) + (309.2 + 269.9) * (457.7 - 457.7) + (269.9 + 269.9) * (457.7 - 436.7) + (269.9 + \\ & 2.3) * (436.7 - 436.7) + (2.3 + 2.3) * (436.7 - 120) + (2.3 + 29.1) * (120 - 120) + (29.1 + 74.3) * \\ & (120 - 73.1) + (74.3 + 163.4) * (73.1 - 73.1)) * 0.5 * 0.00694 \end{aligned} $

9715 Bay Hill Drive, Louisville, Jefferson County, Kentucky, United States, 40223

Gross Living Area: 2129 sq. ft

FLOOR 3
[AREA: 1070]



Space	Area (sq. ft)	Calculation <small>Coordinate Polygon Area Algorithm using inches</small>
FLOOR 3 (Living area)	1070	$ \begin{aligned} & -((424.4 + 424.4) * (-14.7 - 103.2) + (424.4 + 464.9) * (103.2 - 103.2) + (464.9 + 464.9) * (103.2 - \\ & 419.9) + (464.9 + 319.6) * (419.9 - 419.9) + (319.6 + 319.6) * (419.9 - 440.9) + (319.6 + 161.1) * \\ & (440.9 - 440.9) + (161.1 + 161.1) * (440.9 - 419.9) + (161.1 + 23.5) * (419.9 - 419.9) + (23.5 + \\ & 23.5) * (419.9 - 103.2) + (23.5 + 331.8) * (103.2 - 103.2) + (331.8 + 331.8) * (103.2 - -14.7) + \\ & (331.8 + 424.4) * (-14.7 - -14.7)) * 0.5 * 0.00694 \end{aligned} $