

Home report

473 Main Street, Salisbury Point, Amesbury, Essex County,
Massachusetts, United States, 01913



Total Area: 3051 sq. ft

Below Ground: 602 sq. ft, Floor 2: 1642 sq. ft, Floor 3: 807 sq. ft
Excluded: Basement 812 sq. ft, Low ceiling 124 sq. ft, Room 96 sq. ft, Garage 568 sq. ft, Deck 451 sq. ft, Walls: 324 sq. ft

Property summary

 **3** Floors

 **4** Bedrooms

 **2** Bathrooms

Home report

**473 Main Street, Salisbury Point, Amesbury, Essex County,
Massachusetts, United States, 01913**

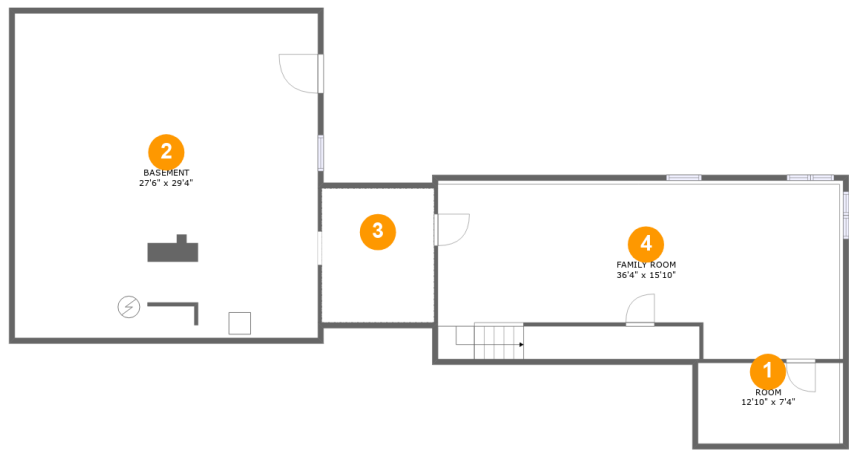


1
Half baths



1
Garages

473 Main Street, Salisbury Point, Amesbury, Essex County,
Massachusetts, United States, 01913



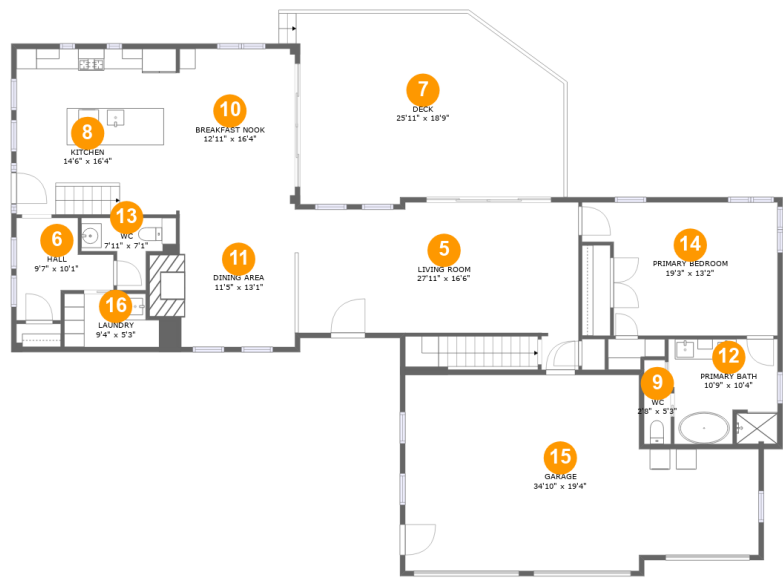
Room dimensions

Floor 1 Below ground Total:602sqft Excluded: 1032sqft

#		Max Dimensions	sqft	Included
1	Room	12'10" x 7'4"	96 sq. ft	No
2	Basement	27'6" x 29'4"	807 sq. ft	No
3	Crawl Space	10'2" x 12'2"	124 sq. ft	No
4	Family Room	36'4" x 15'10"	587 sq. ft	Yes

Home report

473 Main Street, Salisbury Point, Amesbury, Essex County, Massachusetts, United States, 01913



Room dimensions

Floor 2 Total:1642sqft Excluded: 1019sqft

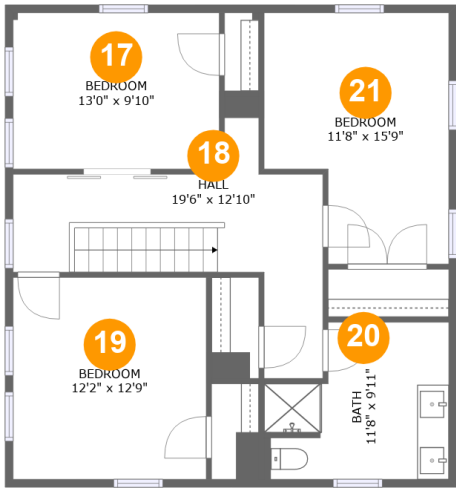
#		Max Dimensions	sqft	Included
5	Living Room	27'11" x 16'6"	365 sq. ft	Yes
6	Hall	9'7" x 10'1"	69 sq. ft	Yes
7	Deck	25'11" x 18'9"	451 sq. ft	No
8	Kitchen	14'6" x 16'4"	237 sq. ft	Yes
9	WC	2'8" x 5'3"	14 sq. ft	Yes
10	Breakfast Nook	12'11" x 16'4"	211 sq. ft	Yes
11	Dining Area	11'5" x 13'1"	166 sq. ft	Yes
12	Primary Bath	10'9" x 10'4"	106 sq. ft	Yes
13	WC	7'11" x 7'1"	42 sq. ft	Yes
14	Primary Bedroom	19'3" x 13'2"	225 sq. ft	Yes
15	Garage	34'10" x 19'4"	568 sq. ft	No

Home report

473 Main Street, Salisbury Point, Amesbury, Essex County,
Massachusetts, United States, 01913

#		Max Dimensions	sqft	Included
16	Laundry	9'4" x 5'3"	51 sq. ft	Yes

473 Main Street, Salisbury Point, Amesbury, Essex County,
Massachusetts, United States, 01913



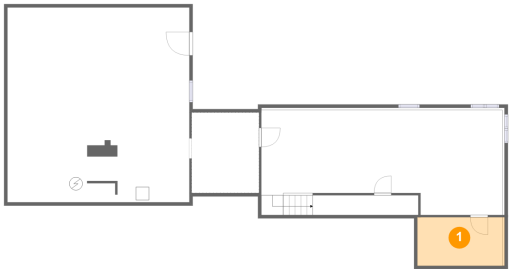
Room dimensions

Floor 3 Total:807sqft Excluded: 0sqft

#		Max Dimensions	sqft	Included
17	Bedroom	13'0" x 9'10"	128 sq. ft	Yes
18	Hall	19'6" x 12'10"	156 sq. ft	Yes
19	Bedroom	12'2" x 12'9"	155 sq. ft	Yes
20	Bath	11'8" x 9'11"	98 sq. ft	Yes
21	Bedroom	11'8" x 15'9"	160 sq. ft	Yes

473 Main Street, Salisbury Point, Amesbury, Essex County,
Massachusetts, United States, 01913

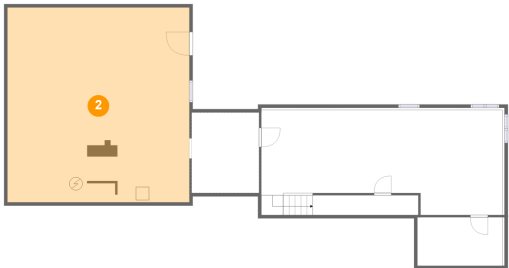
1 Floor 1 - Room



Max Dimensions: 12'10" x 7'4"
Calculated Area: 96 sq. ft
Included: No

Heated: Yes
Finished: No
Enclosed: Yes
Contiguous: Yes
Permitted: Yes
Wet space: No
Addition: No
Conversion: No

2 Floor 1 - Basement

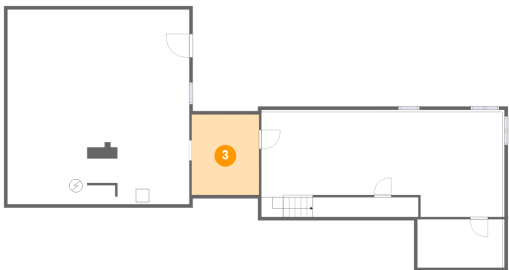


Max Dimensions: 27'6" x 29'4"
Calculated Area: 807 sq. ft
Included: No

Heated: Yes
Finished: No
Enclosed: Yes
Contiguous: Yes
Permitted: Yes
Wet space: No
Addition: No
Conversion: No

473 Main Street, Salisbury Point, Amesbury, Essex County,
Massachusetts, United States, 01913

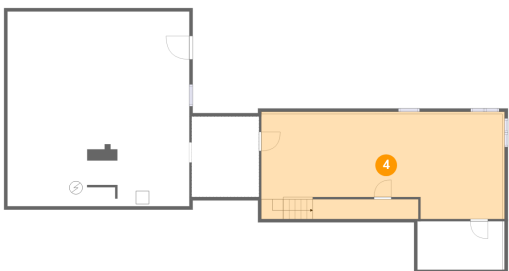
3 Floor 1 - Crawl Space



Max Dimensions: 10'2" x 12'2"
Calculated Area: 124 sq. ft
Included: No

Heated: No
Finished: No
Enclosed: No
Contiguous: Yes
Permitted: No
Wet space: No
Addition: No
Conversion: No

4 Floor 1 - Family Room



Max Dimensions: 36'4" x 15'10"
Calculated Area: 587 sq. ft
Included: Yes

Heated: Yes
Finished: Yes
Enclosed: Yes
Contiguous: Yes
Permitted: Yes
Wet space: No
Addition: No
Conversion: No

5 Floor 2 - Living Room



Max Dimensions: 27'11" x 16'6"
Calculated Area: 365 sq. ft
Included: Yes

Heated: Yes
Finished: Yes
Enclosed: Yes
Contiguous: Yes
Permitted: Yes
Wet space: No
Addition: No
Conversion: No

473 Main Street, Salisbury Point, Amesbury, Essex County,
Massachusetts, United States, 01913

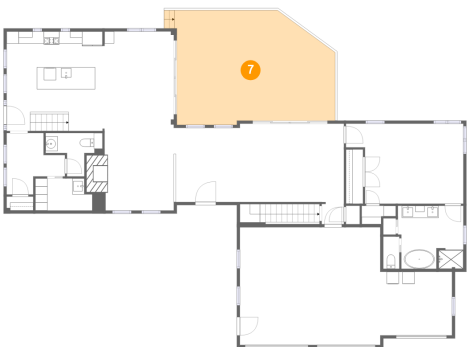
6 Floor 2 - Hall



Max Dimensions: 9'7" x 10'1"
Calculated Area: 69 sq. ft
Included: Yes

Heated: Yes
Finished: Yes
Enclosed: Yes
Contiguous: Yes
Permitted: Yes
Wet space: No
Addition: No
Conversion: No

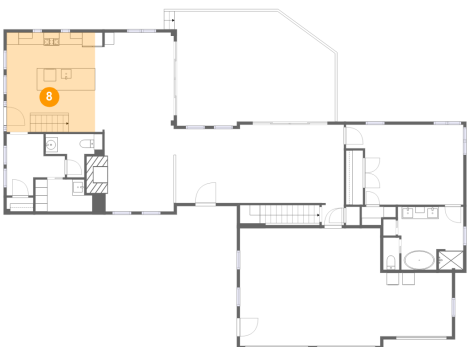
7 Floor 2 - Deck



Max Dimensions: 25'11" x 18'9"
Calculated Area: 451 sq. ft
Included: No

Heated: No
Finished: Yes
Enclosed: No
Contiguous: Yes
Permitted: Yes
Wet space: No
Addition: No
Conversion: No

8 Floor 2 - Kitchen



Max Dimensions: 14'6" x 16'4"
Calculated Area: 237 sq. ft
Included: Yes

Heated: Yes
Finished: Yes
Enclosed: Yes
Contiguous: Yes
Permitted: Yes
Wet space: No
Addition: No
Conversion: No

473 Main Street, Salisbury Point, Amesbury, Essex County,
Massachusetts, United States, 01913

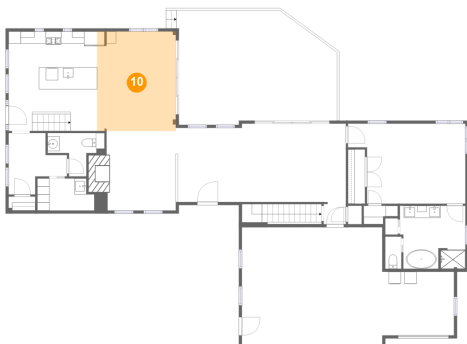
9 Floor 2 - WC



Max Dimensions: 2'8" x 5'3"
Calculated Area: 14 sq. ft
Included: Yes

Heated: Yes
Finished: Yes
Enclosed: Yes
Contiguous: Yes
Permitted: Yes
Wet space: Yes
Addition: No
Conversion: No

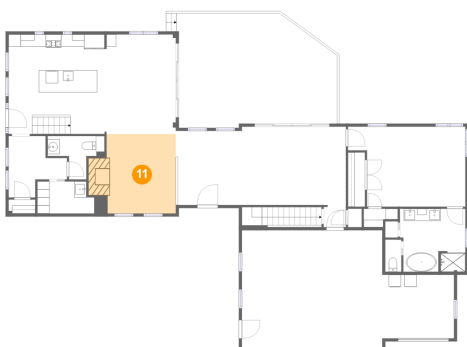
10 Floor 2 - Breakfast Nook



Max Dimensions: 12'11" x 16'4"
Calculated Area: 211 sq. ft
Included: Yes

Heated: Yes
Finished: Yes
Enclosed: Yes
Contiguous: Yes
Permitted: Yes
Wet space: No
Addition: No
Conversion: No

11 Floor 2 - Dining Area



Max Dimensions: 11'5" x 13'1"
Calculated Area: 166 sq. ft
Included: Yes

Heated: Yes
Finished: Yes
Enclosed: Yes
Contiguous: Yes
Permitted: Yes
Wet space: No
Addition: No
Conversion: No

473 Main Street, Salisbury Point, Amesbury, Essex County,
Massachusetts, United States, 01913

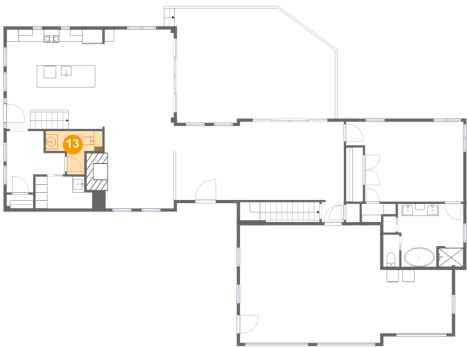
12 Floor 2 - Primary Bath



Max Dimensions: 10'9" x 10'4"
Calculated Area: 106 sq. ft
Included: Yes

Heated: Yes
Finished: Yes
Enclosed: Yes
Contiguous: Yes
Permitted: Yes
Wet space: Yes
Addition: No
Conversion: No

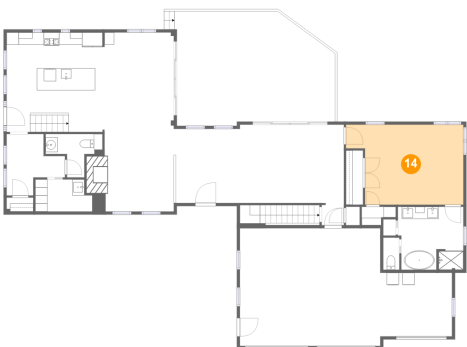
13 Floor 2 - WC



Max Dimensions: 7'11" x 7'1"
Calculated Area: 42 sq. ft
Included: Yes

Heated: Yes
Finished: Yes
Enclosed: Yes
Contiguous: Yes
Permitted: Yes
Wet space: Yes
Addition: No
Conversion: No

14 Floor 2 - Primary Bedroom

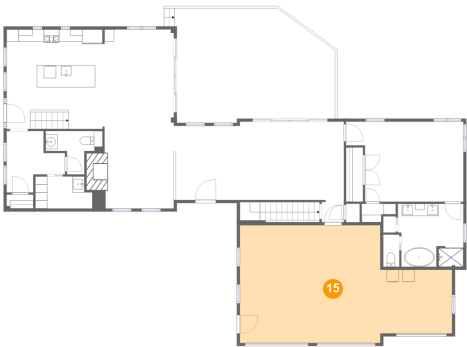


Max Dimensions: 19'3" x 13'2"
Calculated Area: 225 sq. ft
Included: Yes

Heated: Yes
Finished: Yes
Enclosed: Yes
Contiguous: Yes
Permitted: Yes
Wet space: No
Addition: No
Conversion: No

473 Main Street, Salisbury Point, Amesbury, Essex County,
Massachusetts, United States, 01913

15 Floor 2 - Garage



Max Dimensions: 34'10" x 19'4"
Calculated Area: 568 sq. ft
Included: No

Heated: No
Finished: No
Enclosed: Yes
Contiguous: Yes
Permitted: Yes
Wet space: No
Addition: No
Conversion: No

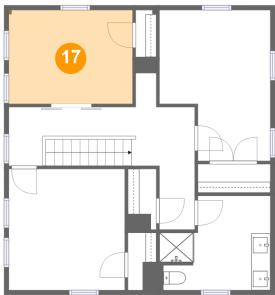
16 Floor 2 - Laundry



Max Dimensions: 9'4" x 5'3"
Calculated Area: 51 sq. ft
Included: Yes

Heated: Yes
Finished: Yes
Enclosed: Yes
Contiguous: Yes
Permitted: Yes
Wet space: No
Addition: No
Conversion: No

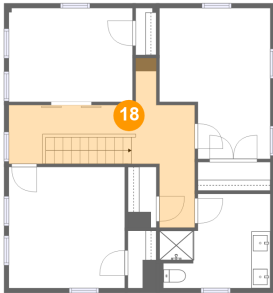
17 Floor 3 - Bedroom



Max Dimensions: 13'0" x 9'10"
Calculated Area: 128 sq. ft
Included: Yes

Heated: Yes
Finished: Yes
Enclosed: Yes
Contiguous: Yes
Permitted: Yes
Wet space: No
Addition: No
Conversion: No

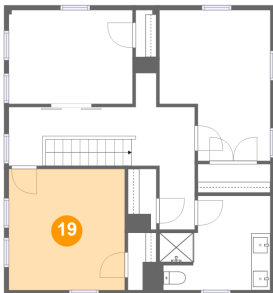
18 Floor 3 - Hall



Max Dimensions: 19'6" x 12'10"
Calculated Area: 156 sq. ft
Included: Yes

Heated: Yes
Finished: Yes
Enclosed: Yes
Contiguous: Yes
Permitted: Yes
Wet space: No
Addition: No
Conversion: No

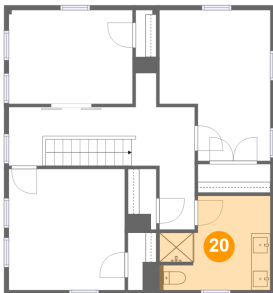
19 Floor 3 - Bedroom



Max Dimensions: 12'2" x 12'9"
Calculated Area: 155 sq. ft
Included: Yes

Heated: Yes
Finished: Yes
Enclosed: Yes
Contiguous: Yes
Permitted: Yes
Wet space: No
Addition: No
Conversion: No

20 Floor 3 - Bath

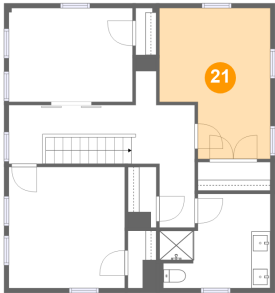


Max Dimensions: 11'8" x 9'11"
Calculated Area: 98 sq. ft
Included: Yes

Heated: Yes
Finished: Yes
Enclosed: Yes
Contiguous: Yes
Permitted: Yes
Wet space: Yes
Addition: No
Conversion: No

473 Main Street, Salisbury Point, Amesbury, Essex County,
Massachusetts, United States, 01913

21 Floor 3 - Bedroom



Max Dimensions: 11'8" x 15'9"
Calculated Area: 160 sq. ft
Included: Yes

Heated: Yes
Finished: Yes
Enclosed: Yes
Contiguous: Yes
Permitted: Yes
Wet space: No
Addition: No
Conversion: No