

Home report

1759 South Daniel Creek Road,Collinsville,Virginia,United States



Total Area: 1232 sq. ft
Below Ground: 0 sq. ft, Floor 2: 798 sq. ft, Floor 3: 434 sq. ft
Excluded: Basement 794 sq. ft, Laundry/enclosed porch 89 sq. ft, Porch 54 sq. ft, Walls: 181 sq. ft

Property summary

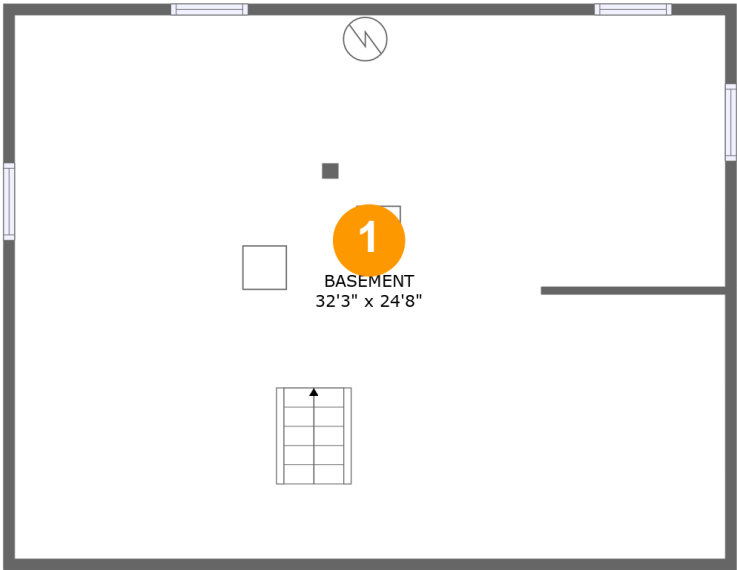
 **3** Floors

 **4** Bedrooms

 **2** Bathrooms

Home report

1759 South Daniel Creek Road,Collinsville,Virginia,United States



Room dimensions

Floor 1 Below ground

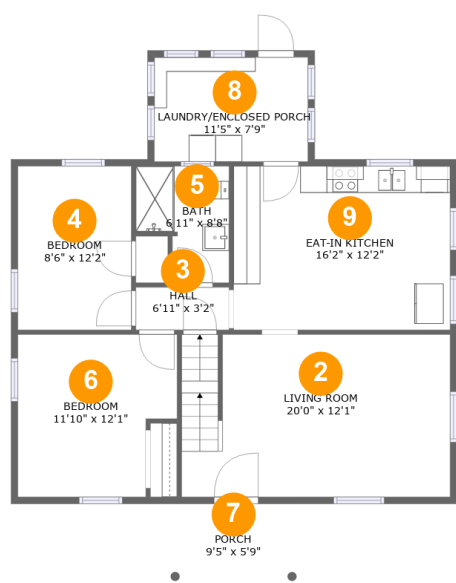
Total:0sqft

Excluded: 794sqft

#		Max Dimensions	sqft	Included
1	Basement	32'3" x 24'8"	791 sq. ft	No

Home report

1759 South Daniel Creek Road,Collinsville,Virginia,United States



Room dimensions

Floor 2

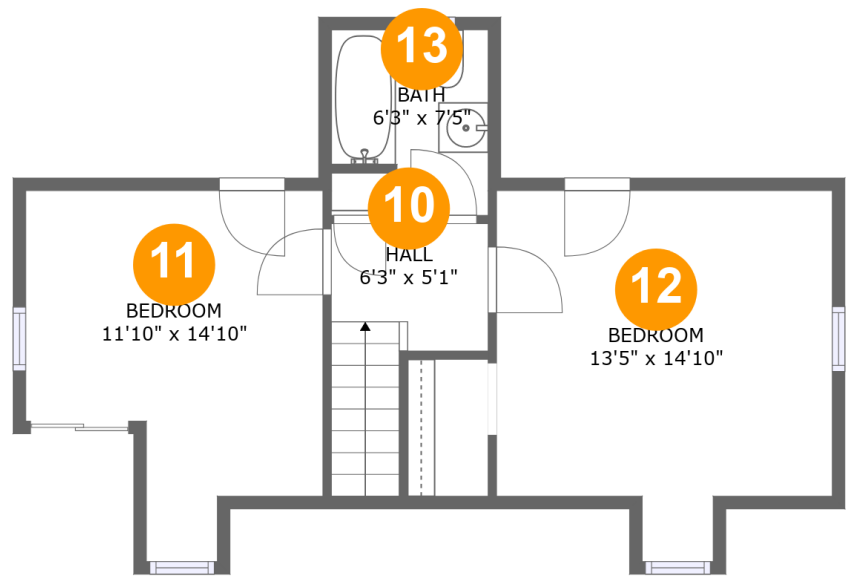
Total:798sqft

Excluded: 143sqft

#		Max Dimensions	sqft	Included
2	Living Room	20'0" x 12'1"	240 sq. ft	Yes
3	Hall	6'11" x 3'2"	22 sq. ft	Yes
4	Bedroom	8'6" x 12'2"	103 sq. ft	Yes
5	Bath	6'11" x 8'8"	50 sq. ft	Yes
6	Bedroom	11'10" x 12'1"	130 sq. ft	Yes
7	Porch	9'5" x 5'9"	54 sq. ft	No
8	LAUNDRY/ENCLOSED Porch	11'5" x 7'9"	89 sq. ft	No
9	Eat-in Kitchen	16'2" x 12'2"	197 sq. ft	Yes

Home report

1759 South Daniel Creek Road,Collinsville,Virginia,United States



Room dimensions

Floor 3

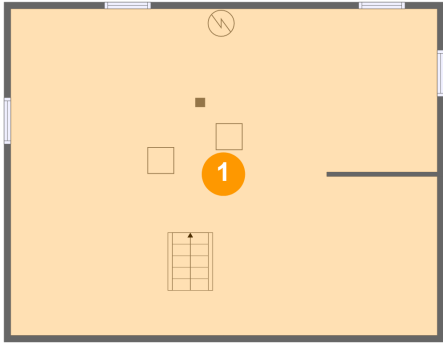
Total:434sqft

Excluded: 0sqft

#		Max Dimensions	sqft	Included
10	Hall	6'3" x 5'1"	48 sq. ft	Yes
11	Bedroom	11'10" x 14'10"	138 sq. ft	Yes
12	Bedroom	13'5" x 14'10"	171 sq. ft	Yes
13	Bath	6'3" x 7'5"	41 sq. ft	Yes

1

Floor 1 - Basement



Max Dimensions: 32'3" x 24'8"

Calculated Area: 791 sq. ft

Included: No

Heated: Yes

Finished: No

Enclosed: Yes

Contiguous: Yes

Permitted: Yes

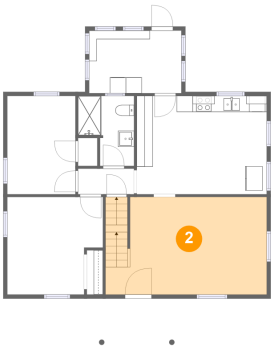
Wet space: No

Addition: No

Conversion: No

2

Floor 2 - Living Room



Max Dimensions: 20'0" x 12'1"

Calculated Area: 240 sq. ft

Included: Yes

Heated: Yes

Finished: Yes

Enclosed: Yes

Contiguous: Yes

Permitted: Yes

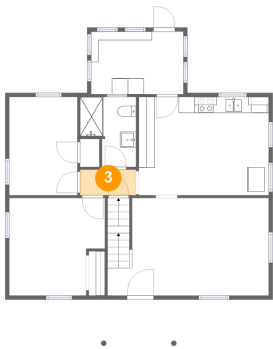
Wet space: No

Addition: No

Conversion: No

3

Floor 2 - Hall

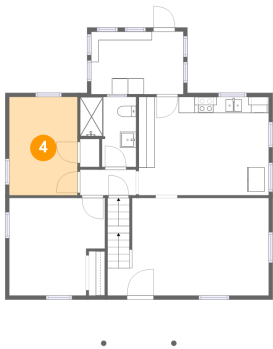


Max Dimensions: 6'11" x 3'2"
Calculated Area: 22 sq. ft
Included: Yes

Heated: Yes
Finished: Yes
Enclosed: Yes
Contiguous: Yes
Permitted: Yes
Wet space: No
Addition: No
Conversion: No

4

Floor 2 - Bedroom

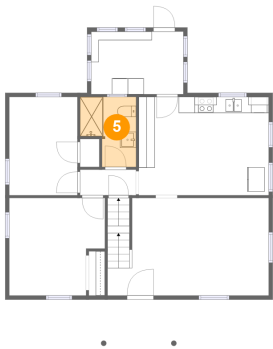


Max Dimensions: 8'6" x 12'2"
Calculated Area: 103 sq. ft
Included: Yes

Heated: Yes
Finished: Yes
Enclosed: Yes
Contiguous: Yes
Permitted: Yes
Wet space: No
Addition: No
Conversion: No

5

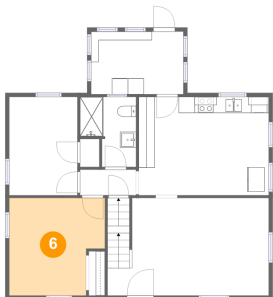
Floor 2 - Bath



Max Dimensions: 6'11" x 8'8"
Calculated Area: 50 sq. ft
Included: Yes

Heated: Yes
Finished: Yes
Enclosed: Yes
Contiguous: Yes
Permitted: Yes
Wet space: Yes
Addition: No
Conversion: No

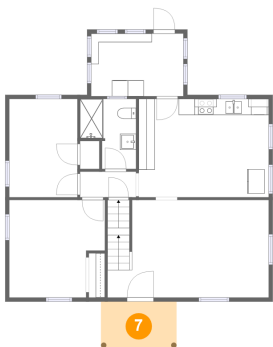
6 Floor 2 - Bedroom



Max Dimensions: 11'10" x 12'1"
Calculated Area: 130 sq. ft
Included: Yes

Heated: Yes
Finished: Yes
Enclosed: Yes
Contiguous: Yes
Permitted: Yes
Wet space: No
Addition: No
Conversion: No

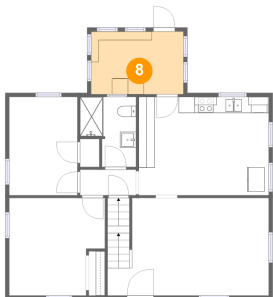
7 Floor 2 - Porch



Max Dimensions: 9'5" x 5'9"
Calculated Area: 54 sq. ft
Included: No

Heated: No
Finished: Yes
Enclosed: No
Contiguous: Yes
Permitted: Yes
Wet space: No
Addition: No
Conversion: No

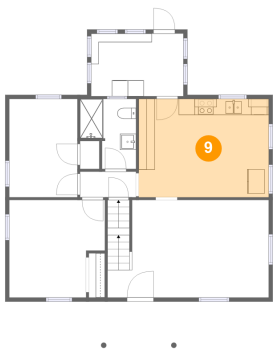
8 Floor 2 - LAUNDRY/ENCLOSED Porch



Max Dimensions: 11'5" x 7'9"
Calculated Area: 89 sq. ft
Included: No

Heated: Yes
Finished: No
Enclosed: Yes
Contiguous: Yes
Permitted: Yes
Wet space: No
Addition: No
Conversion: No

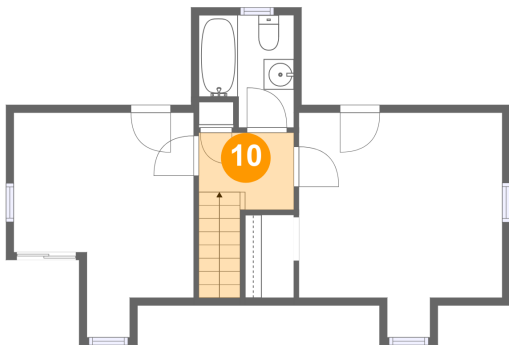
9 Floor 2 - Eat-in Kitchen



Max Dimensions: 16'2" x 12'2"
Calculated Area: 197 sq. ft
Included: Yes

Heated: Yes
Finished: Yes
Enclosed: Yes
Contiguous: Yes
Permitted: Yes
Wet space: No
Addition: No
Conversion: No

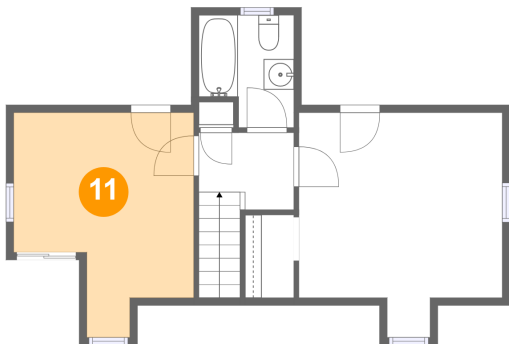
10 Floor 3 - Hall



Max Dimensions: 6'3" x 5'1"
Calculated Area: 48 sq. ft
Included: Yes

Heated: Yes
Finished: Yes
Enclosed: Yes
Contiguous: Yes
Permitted: Yes
Wet space: No
Addition: No
Conversion: No

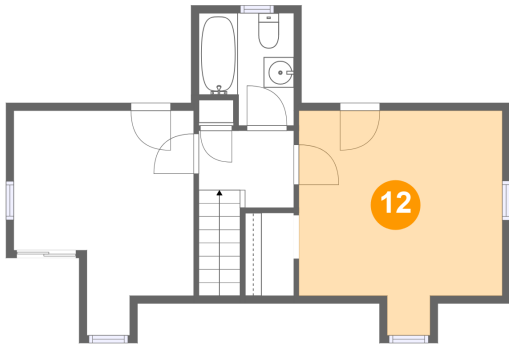
11 Floor 3 - Bedroom



Max Dimensions: 11'10" x 14'10"
Calculated Area: 138 sq. ft
Included: Yes

Heated: Yes
Finished: Yes
Enclosed: Yes
Contiguous: Yes
Permitted: Yes
Wet space: No
Addition: No
Conversion: No

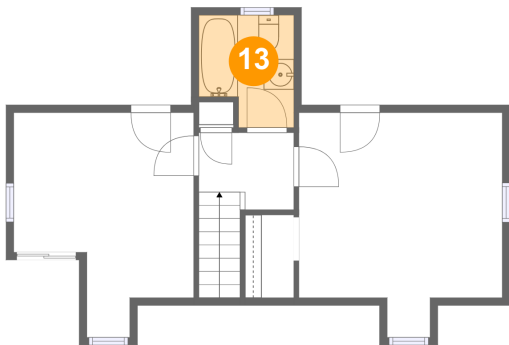
12 Floor 3 - Bedroom



Max Dimensions: 13'5" x 14'10"
Calculated Area: 171 sq. ft
Included: Yes

Heated: Yes
Finished: Yes
Enclosed: Yes
Contiguous: Yes
Permitted: Yes
Wet space: No
Addition: No
Conversion: No

13 Floor 3 - Bath



Max Dimensions: 6'3" x 7'5"
Calculated Area: 41 sq. ft
Included: Yes

Heated: Yes
Finished: Yes
Enclosed: Yes
Contiguous: Yes
Permitted: Yes
Wet space: Yes
Addition: No
Conversion: No