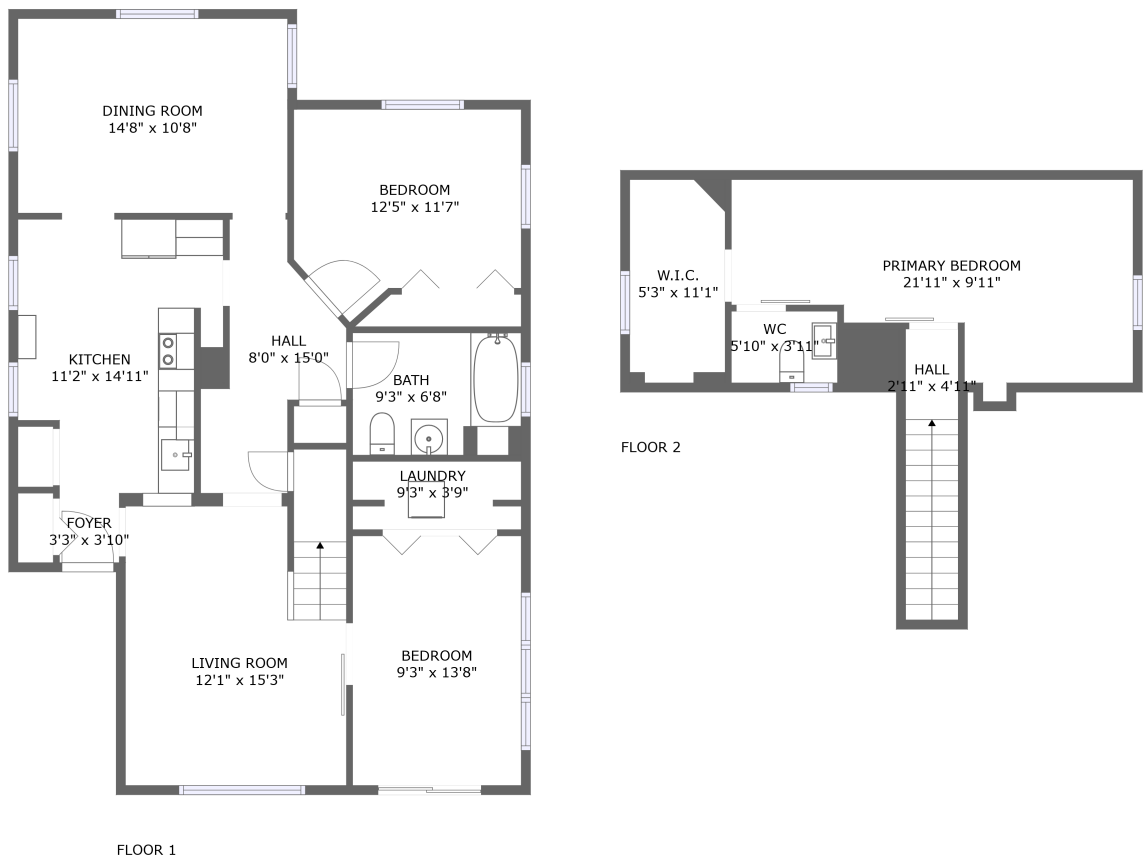


Home report

42439 Parkhurst Rd,STE 100,Plymouth,MI,US, STE 100



Total Area: 1251 sq. ft
Floor 1: 1017 sq. ft, Floor 2: 234 sq. ft
Excluded: Low ceiling 111 sq. ft, Walls: 123 sq. ft

Property summary

 **2** Floors

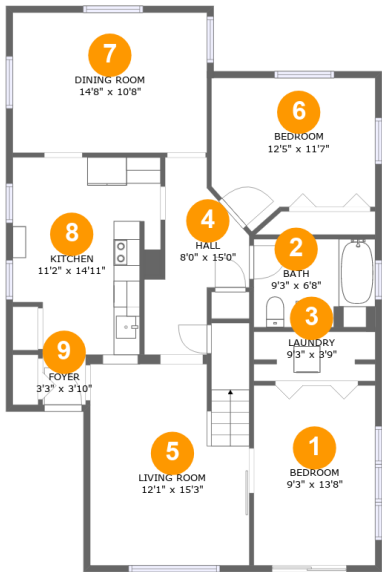
 **3** Bedrooms

 **1** Bathrooms

 **1** Half baths

Home report

42439 Parkhurst Rd,STE 100,Plymouth,MI,US, STE 100



Room dimensions

Floor 1

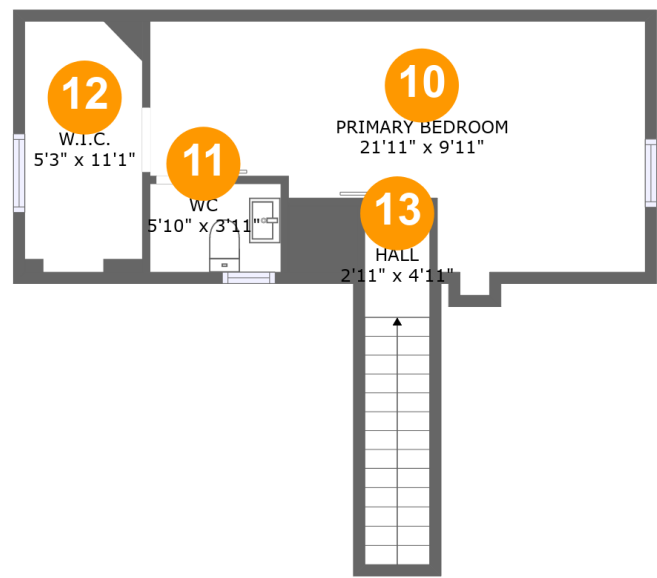
Total:1017sqft

Excluded: 0sqft

#		Max Dimensions	sqft	Included
1	Bedroom	9'3" x 13'8"	126 sq. ft	Yes
2	Bath	9'3" x 6'8"	60 sq. ft	Yes
3	Laundry	9'3" x 3'9"	33 sq. ft	Yes
4	Hall	8'0" x 15'0"	75 sq. ft	Yes
5	Living Room	12'1" x 15'3"	194 sq. ft	Yes
6	Bedroom	12'5" x 11'7"	124 sq. ft	Yes
7	Dining Room	14'8" x 10'8"	157 sq. ft	Yes
8	Kitchen	11'2" x 14'11"	152 sq. ft	Yes
9	Foyer	3'3" x 3'10"	12 sq. ft	Yes

Home report

42439 Parkhurst Rd,STE 100,Plymouth,MI,US, STE 100



Room dimensions

Floor 2 Total:234sqft Excluded: 111sqft

#		Max Dimensions	sqft	Included
10	Primary Bedroom	21'11" x 9'11"	107 sq. ft	Yes
11	WC	5'10" x 3'11"	23 sq. ft	Yes
12	W.I.C.	5'3" x 11'1"	39 sq. ft	Yes
13	Hall	2'11" x 4'11"	46 sq. ft	Yes

1 Floor 1 - Bedroom



Max Dimensions: 9'3" x 13'8"
Calculated Area: 126 sq. ft
Included: Yes

Heated: Yes
Finished: Yes
Enclosed: Yes
Contiguous: Yes
Permitted: Yes
Wet space: No
Addition: No
Conversion: No

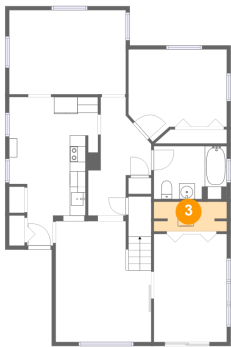
2 Floor 1 - Bath



Max Dimensions: 9'3" x 6'8"
Calculated Area: 60 sq. ft
Included: Yes

Heated: Yes
Finished: Yes
Enclosed: Yes
Contiguous: Yes
Permitted: Yes
Wet space: Yes
Addition: No
Conversion: No

3 Floor 1 - Laundry



Max Dimensions: 9'3" x 3'9"
Calculated Area: 33 sq. ft
Included: Yes

Heated: Yes
Finished: Yes
Enclosed: Yes
Contiguous: Yes
Permitted: Yes
Wet space: No
Addition: No
Conversion: No

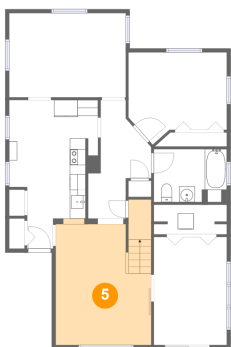
4 Floor 1 - Hall



Max Dimensions: 8'0" x 15'0"
Calculated Area: 75 sq. ft
Included: Yes

Heated: Yes
Finished: Yes
Enclosed: Yes
Contiguous: Yes
Permitted: Yes
Wet space: No
Addition: No
Conversion: No

5 Floor 1 - Living Room



Max Dimensions: 12'1" x 15'3"
Calculated Area: 194 sq. ft
Included: Yes

Heated: Yes
Finished: Yes
Enclosed: Yes
Contiguous: Yes
Permitted: Yes
Wet space: No
Addition: No
Conversion: No

6 Floor 1 - Bedroom



Max Dimensions: 12'5" x 11'7"
Calculated Area: 124 sq. ft
Included: Yes

Heated: Yes
Finished: Yes
Enclosed: Yes
Contiguous: Yes
Permitted: Yes
Wet space: No
Addition: No
Conversion: No

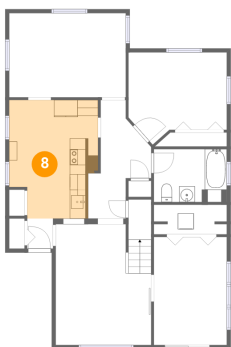
7 Floor 1 - Dining Room



Max Dimensions: 14'8" x 10'8"
Calculated Area: 157 sq. ft
Included: Yes

Heated: Yes
Finished: Yes
Enclosed: Yes
Contiguous: Yes
Permitted: Yes
Wet space: No
Addition: No
Conversion: No

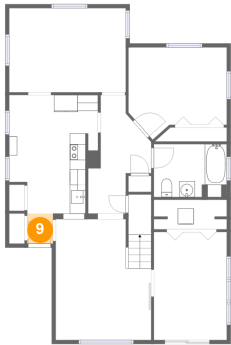
8 Floor 1 - Kitchen



Max Dimensions: 11'2" x 14'11"
Calculated Area: 152 sq. ft
Included: Yes

Heated: Yes
Finished: Yes
Enclosed: Yes
Contiguous: Yes
Permitted: Yes
Wet space: No
Addition: No
Conversion: No

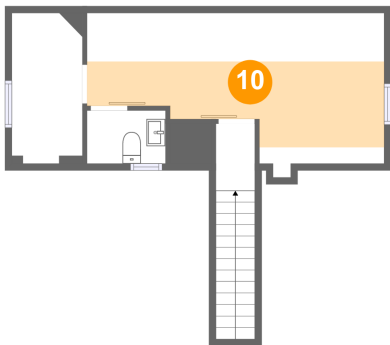
9 Floor 1 - Foyer



Max Dimensions: 3'3" x 3'10"
Calculated Area: 12 sq. ft
Included: Yes

Heated: Yes
Finished: Yes
Enclosed: Yes
Contiguous: Yes
Permitted: Yes
Wet space: No
Addition: No
Conversion: No

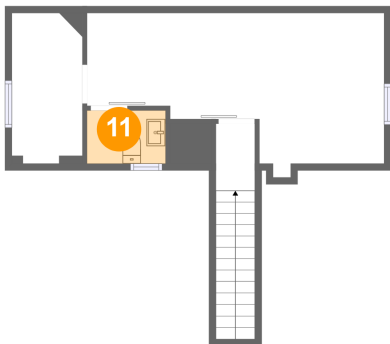
10 Floor 2 - Primary Bedroom



Max Dimensions: 21'11" x 9'11"
Calculated Area: 107 sq. ft
Included: Yes

Heated: Yes
Finished: Yes
Enclosed: Yes
Contiguous: Yes
Permitted: Yes
Wet space: No
Addition: No
Conversion: No

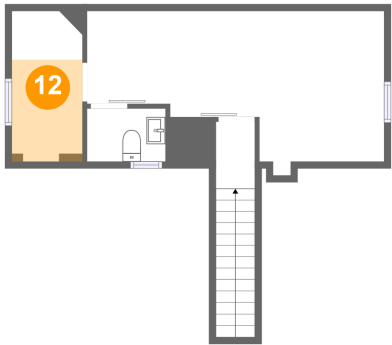
11 Floor 2 - WC



Max Dimensions: 5'10" x 3'11"
Calculated Area: 23 sq. ft
Included: Yes

Heated: Yes
Finished: Yes
Enclosed: Yes
Contiguous: Yes
Permitted: Yes
Wet space: Yes
Addition: No
Conversion: No

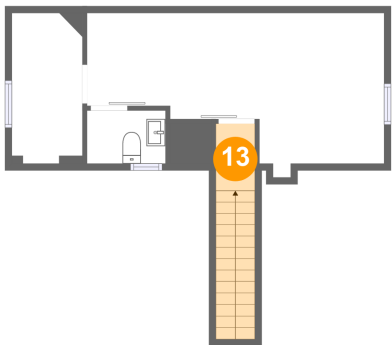
12 Floor 2 - W.I.C.



Max Dimensions: 5'3" x 11'1"
Calculated Area: 39 sq. ft
Included: Yes

Heated: Yes
Finished: Yes
Enclosed: Yes
Contiguous: Yes
Permitted: Yes
Wet space: No
Addition: No
Conversion: No

13 Floor 2 - Hall



Max Dimensions: 2'11" x 4'11"
Calculated Area: 46 sq. ft
Included: Yes

Heated: Yes
Finished: Yes
Enclosed: Yes
Contiguous: Yes
Permitted: Yes
Wet space: No
Addition: No
Conversion: No