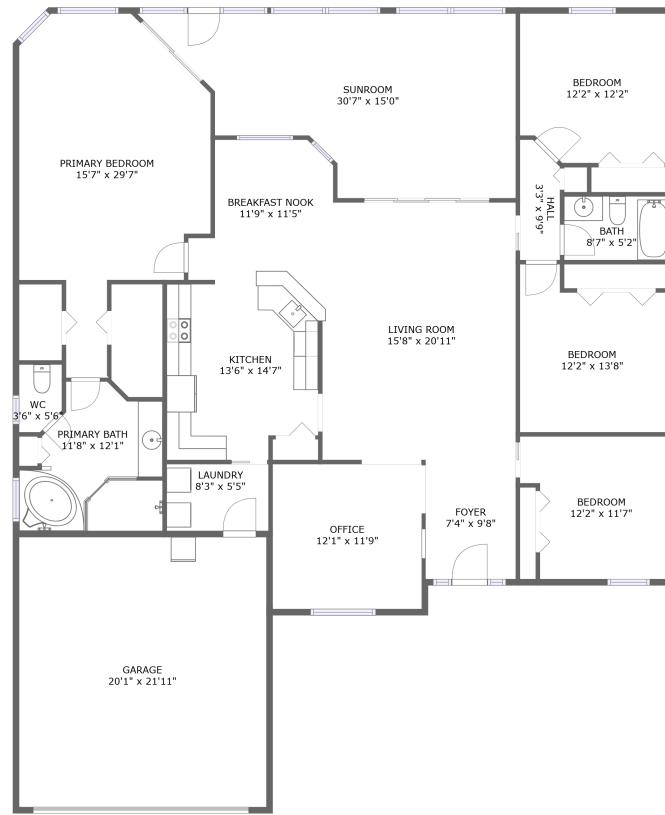



3393 Dione St, Melbourne, FL, US



FLOOR 1

Property summary


 **1** Garages

 **4** Bedrooms

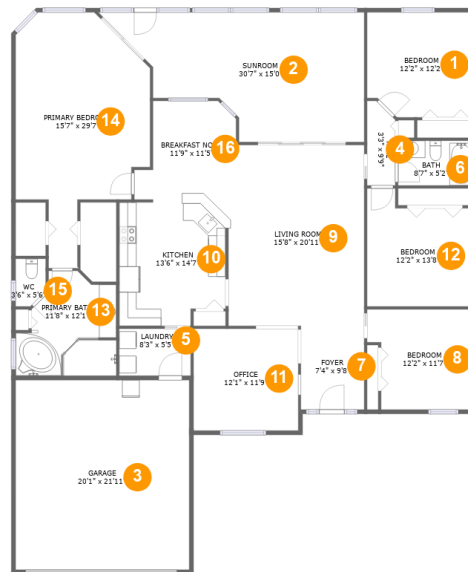
 **2** Bathrooms

 **0** Half baths

 **1** Floors

 **2,471**
Gross living
area sqft

 **2,940**
Total sqft

3393 Dione St, Melbourne, FL, US**Room dimensions**

Floor 1

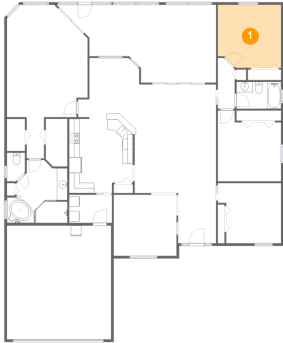
Total sqft: 2940 Living area: 2471

#		Dimensions	sqft	Counted as living area
1	Bedroom	12'2" x 12'2"	143 sq. ft	Yes
2	Sunroom	30'7" x 15'0"	338 sq. ft	Yes
3	Garage	20'1" x 21'11"	440 sq. ft	No
4	Hall	3'3" x 9'9"	29 sq. ft	Yes
5	Laundry	8'3" x 5'5"	45 sq. ft	Yes
6	Bath	8'7" x 5'2"	45 sq. ft	Yes
7	Foyer	7'4" x 9'8"	71 sq. ft	Yes
8	Bedroom	12'2" x 11'7"	129 sq. ft	Yes
9	Living Room	15'8" x 20'11"	320 sq. ft	Yes
10	Kitchen	13'6" x 14'7"	174 sq. ft	Yes
11	Office	12'1" x 11'9"	143 sq. ft	Yes

3393 Dione St, Melbourne, FL, US

#		Dimensions	sqft	Counted as living area
12	Bedroom	12'2" x 13'8"	146 sq. ft	Yes
13	Primary Bath	11'8" x 12'1"	115 sq. ft	Yes
14	Primary Bedroom	15'7" x 29'7"	330 sq. ft	Yes
15	WC	3'6" x 5'6"	18 sq. ft	Yes
16	Breakfast Nook	11'9" x 11'5"	115 sq. ft	Yes

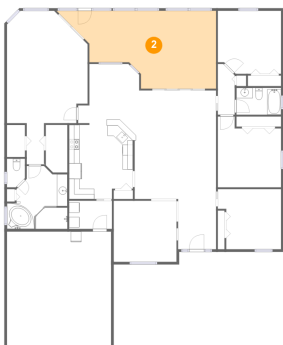
1 Floor 1 - Bedroom



Dimensions: 12'2" x 12'2"
Area: 143 sq. ft
Counted as living area: Yes

Heated: Yes
Finished: Yes
Enclosed: Yes
Contiguous: Yes
Permitted: Yes
Wet space: No
Addition: No
Conversion: No

2 Floor 1 - Sunroom

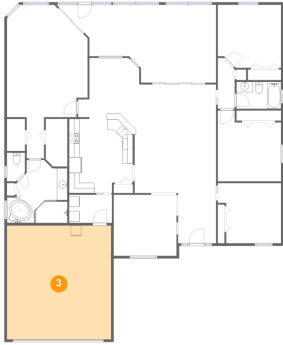


Dimensions: 30'7" x 15'0"
Area: 338 sq. ft
Counted as living area: Yes

Heated: Yes
Finished: Yes
Enclosed: Yes
Contiguous: Yes
Permitted: Yes
Wet space: No
Addition: No
Conversion: No

3393 Dione St, Melbourne, FL, US

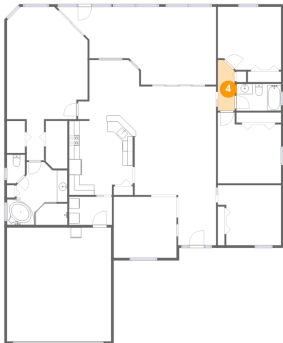
3 Floor 1 - Garage



Dimensions: 20'1" x 21'11"
Area: 440 sq. ft
Counted as living area: No

Heated: No
Finished: No
Enclosed: Yes
Contiguous: Yes
Permitted: Yes
Wet space: No
Addition: No
Conversion: No

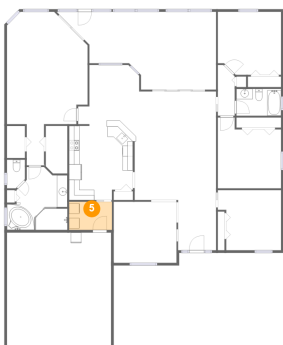
4 Floor 1 - Hall



Dimensions: 3'3" x 9'9"
Area: 29 sq. ft
Counted as living area: Yes

Heated: Yes
Finished: Yes
Enclosed: Yes
Contiguous: Yes
Permitted: Yes
Wet space: No
Addition: No
Conversion: No

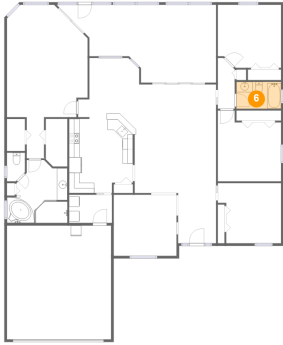
5 Floor 1 - Laundry



Dimensions: 8'3" x 5'5"
Area: 45 sq. ft
Counted as living area: Yes

Heated: Yes
Finished: Yes
Enclosed: Yes
Contiguous: Yes
Permitted: Yes
Wet space: No
Addition: No
Conversion: No

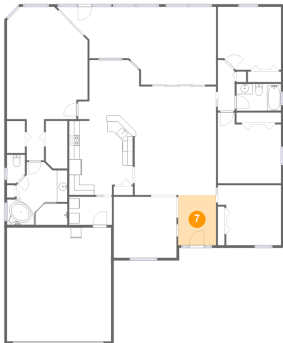
6 Floor 1 - Bath



Dimensions: 8'7" x 5'2"
Area: 45 sq. ft
Counted as living area: Yes

Heated: Yes
Finished: Yes
Enclosed: Yes
Contiguous: Yes
Permitted: Yes
Wet space: Yes
Addition: No
Conversion: No

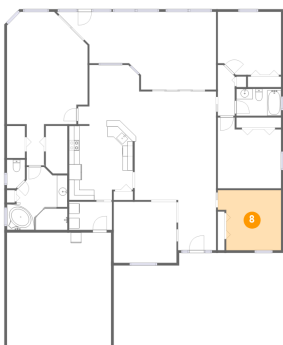
7 Floor 1 - Foyer



Dimensions: 7'4" x 9'8"
Area: 71 sq. ft
Counted as living area: Yes

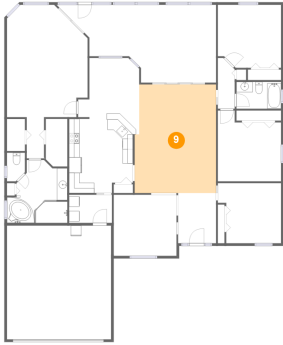
Heated: Yes
Finished: Yes
Enclosed: Yes
Contiguous: Yes
Permitted: Yes
Wet space: No
Addition: No
Conversion: No

8 Floor 1 - Bedroom



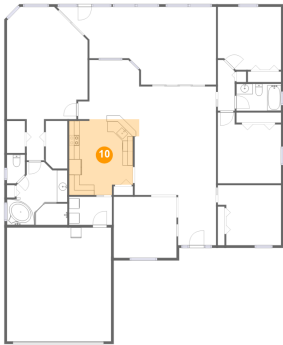
Dimensions: 12'2" x 11'7"
Area: 129 sq. ft
Counted as living area: Yes

Heated: Yes
Finished: Yes
Enclosed: Yes
Contiguous: Yes
Permitted: Yes
Wet space: No
Addition: No
Conversion: No

3393 Dione St, Melbourne, FL, US**9 Floor 1 - Living Room**

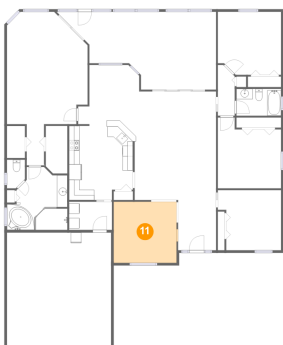
Dimensions: 15'8" x 20'11"
Area: 320 sq. ft
Counted as living area: Yes

Heated: Yes
Finished: Yes
Enclosed: Yes
Contiguous: Yes
Permitted: Yes
Wet space: No
Addition: No
Conversion: No

10 Floor 1 - Kitchen

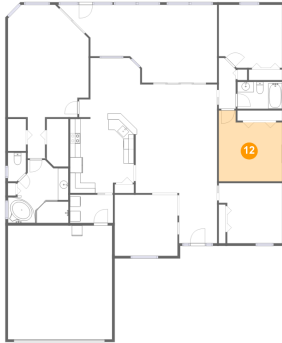
Dimensions: 13'6" x 14'7"
Area: 174 sq. ft
Counted as living area: Yes

Heated: Yes
Finished: Yes
Enclosed: Yes
Contiguous: Yes
Permitted: Yes
Wet space: No
Addition: No
Conversion: No

11 Floor 1 - Office

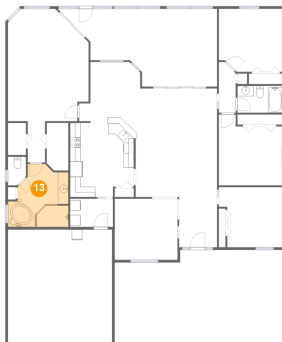
Dimensions: 12'1" x 11'9"
Area: 143 sq. ft
Counted as living area: Yes

Heated: Yes
Finished: Yes
Enclosed: Yes
Contiguous: Yes
Permitted: Yes
Wet space: No
Addition: No
Conversion: No

3393 Dione St, Melbourne, FL, US**12 Floor 1 - Bedroom**

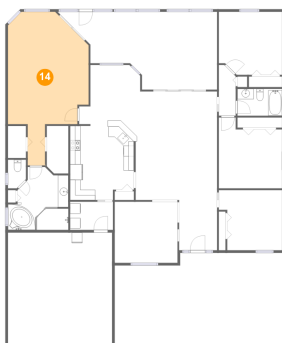
Dimensions: 12'2" x 13'8"
Area: 146 sq. ft
Counted as living area: Yes

Heated: Yes
Finished: Yes
Enclosed: Yes
Contiguous: Yes
Permitted: Yes
Wet space: No
Addition: No
Conversion: No

13 Floor 1 - Primary Bath

Dimensions: 11'8" x 12'1"
Area: 115 sq. ft
Counted as living area: Yes

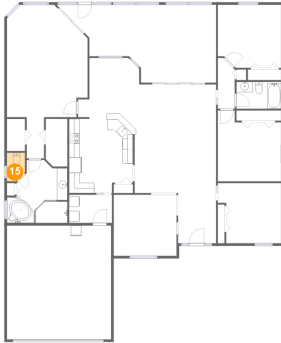
Heated: Yes
Finished: Yes
Enclosed: Yes
Contiguous: Yes
Permitted: Yes
Wet space: Yes
Addition: No
Conversion: No

14 Floor 1 - Primary Bedroom

Dimensions: 15'7" x 29'7"
Area: 330 sq. ft
Counted as living area: Yes

Heated: Yes
Finished: Yes
Enclosed: Yes
Contiguous: Yes
Permitted: Yes
Wet space: No
Addition: No
Conversion: No

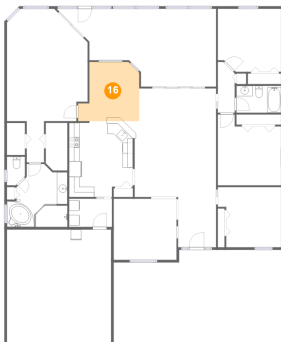
15 Floor 1 - WC



Dimensions: 3'6" x 5'6"
Area: 18 sq. ft
Counted as living area: Yes

Heated: Yes
Finished: Yes
Enclosed: Yes
Contiguous: Yes
Permitted: Yes
Wet space: Yes
Addition: No
Conversion: No

16 Floor 1 - Breakfast Nook



Dimensions: 11'9" x 11'5"
Area: 115 sq. ft
Counted as living area: Yes

Heated: Yes
Finished: Yes
Enclosed: Yes
Contiguous: Yes
Permitted: Yes
Wet space: No
Addition: No
Conversion: No